

Creating a Resume Webpage with Cascading Style Sheet Code

6

In this chapter, we will learn the following to World Class CAD standards:

- **Using a Storyboard to Create a Resume Webpage**
- **Starting a HTML Resume Webpage**
- **Starting the Cascading Style Sheet Code in the Header**
- **Redefining the P Tag in the Resume Web Page**
- **Redefining the A Tag in the Resume Web Page**
- **Redefining the H1 Tag in the Resume Web Page**
- **Creating a Custom Style in the Resume Web Page**
- **Defining the Body of the Resume Webpage**
- **Adding Redefined Header Text to the Web Page**
- **Adding the Redefined Hyperlinks and Paragraphs to the Page**
- **Adding the Email Link to a Webpage**
- **Applying a Custom Style to the Copyright Statement**
- **Closing the HTML and Cascading Style Sheet Web Page**
- **Viewing the Web Page with the Web Browser**

Using a Storyboard to Create a Resume Webpage

In this chapter, we will learn how to make a Resume webpage with Cascading Style Sheet code webpage along with HTML. When we complete the file, we will be able to access PDF formatted resumes. From the storyboard shown in Figure 6.1, we see that we are using a header for the banner, a single hyperlink to return to the homepage, five hyperlinks to the resumes, a link to launch an email message to the webmaster and a copyright statement. Unlike the previous assignments, we will control the font family and associated attributes of the header, hyperlink, paragraph and text with the Cascading Style Sheet (CSS) code. At the end of the project, we will notice that the programming syntax is cleaner looking than previous projects.

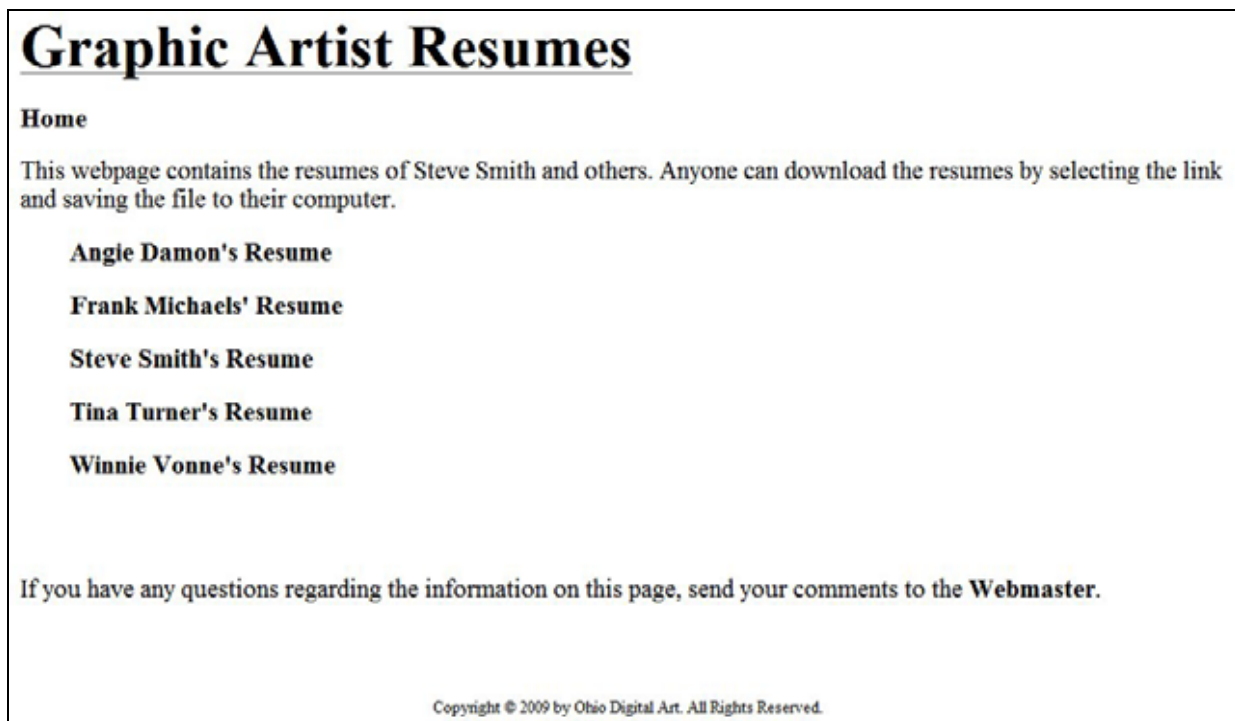


Figure 6.1 – The Storyboard for their Resume Webpage

Starting a HTML Resume Webpage

Begin the project by opening up Notepad by clicking the Start button on our desktop and choosing Programs/Accessories/Notepad. Select Format on the menu bar to see whether word wrapping is chosen.

Now we will begin to enter the HTML code into Notepad. The first thing we want to type into the page is `<html>` and `<head>` as shown in Figure 6.2.

Creating a Resume Webpage with Cascading Style Sheet Code

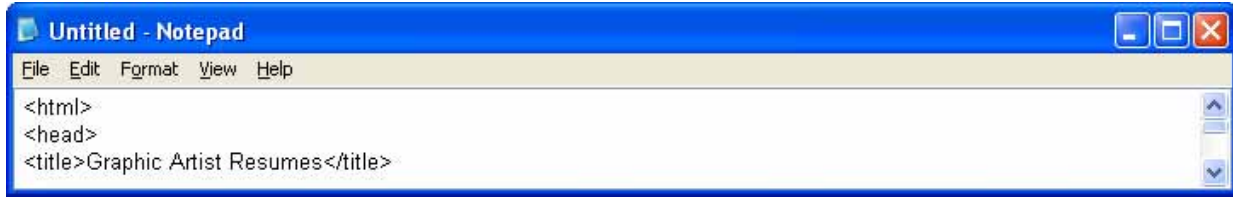


Figure 6.2 – Starting the Resume Webpage in Notepad

Next the `<title>` code identifies a document to the users. On the Resume webpage, we will just type the name “Graphic Artist Resumes”. When we view the webpage in Internet Explorer, the text “Graphic Artist Resumes” will appear in the document title on the upper left section of our computer window. Try to be specific with the titles on the pages since this another opportunity to identify the information be presented to the viewer.

Next, we will want to save our work. Chose File on the menu bar and then pick Save. Save the file as resumes.htm as shown in figure 6.3.

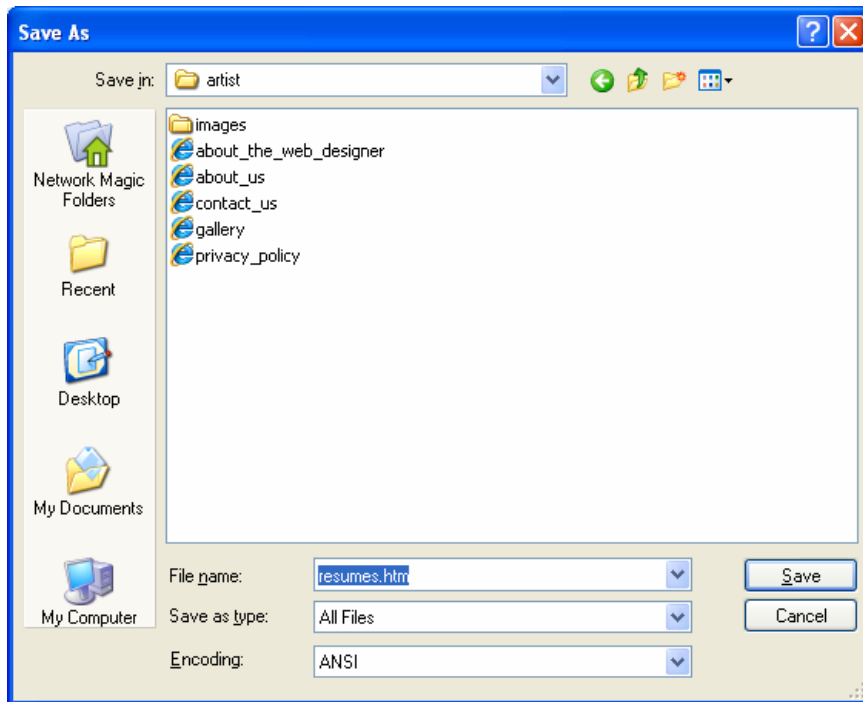


Figure 6.3 – Saving the Resume Webpage

Tag	Name	Description
html	Hyper Text Meta Language	Begins a HTML document
Example	Start Tag	End Tag
<code><html></code> <code><head></head></code> <code><body></body></code> <code></html></code>	<code><html></code>	<code></html></code>

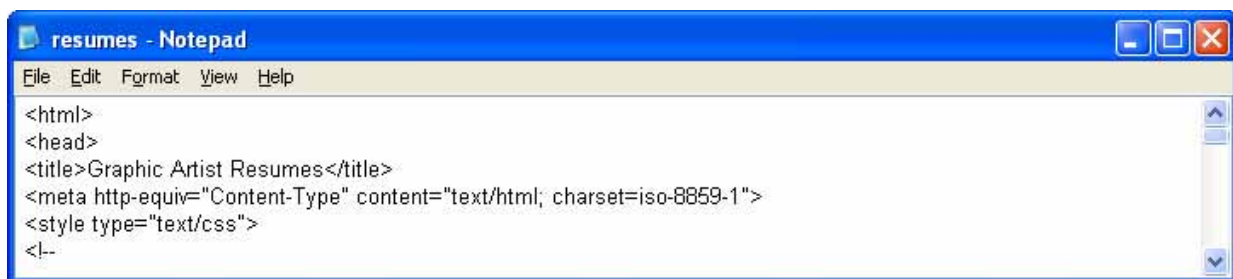
Creating a Resume Webpage with Cascading Style Sheet Code

Tag	Name	Description
head	Header	Contains header information not visible inside the web page
Example	Start Tag	End Tag
<code><head></code> <code><title>Graphic Artist Resumes</code> <code></title></code> <code></head></code>	<code><head></code>	<code></head></code>

Starting the Cascading Style Sheet Code in the Header

There are three ways we can use Cascading Style Sheet code in the HTML webpage. One method is to place the code inline with the HTML syntax, and the expression only applies to that tag. The second technique, which we will use in this chapter, is to place the Cascading Style Sheet code in the Header of the HTML document and then the instructions affect the entire webpage. The last method that we use in the next chapter is creating an external Cascading Style Sheet that can shape the entire website.

We begin the embedded Cascading Style Sheet by typing the meta tag. The meta expression in the code is `<meta http-equiv="Content-Type" content="text/html; charset=iso-8859-1">` to declare its character coding for English and Western European countries.



```
<html>
<head>
<title>Graphic Artist Resumes</title>
<meta http-equiv="Content-Type" content="text/html; charset=iso-8859-1">
<style type="text/css">
<!--
```

Figure 6.4 – Saving the Resume Webpage

For embedded style sheets, we begin by inputting `<style type="text/css">` to declare a Cascading Style Sheet and a `</style>` to end declarations of the styles. We use the HTML comment tags `<!--` at the beginning of the actual style declarations and at the end `-->`. If we do not use the comment tags, we may see the CSS style code at the top of the webpage.

Redefining the P Tag in the Resume Web Page

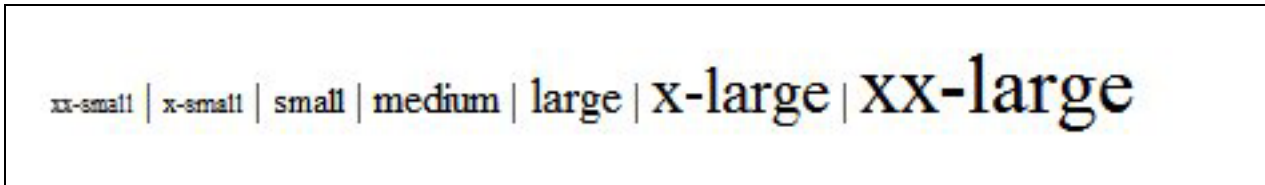
We will redefine the P, A and H1 HTML tags in the webpage and create our own class in this project. The first classification is for the paragraph tag.

```
p { font-family: "Times New Roman"; font-size: 16pt; font-style: normal; line-height: normal; font-weight: normal; font-variant: normal; text-transform: none; color: #000000; text-decoration: none}
```

We need to learn a little about the CSS property names and the multiple options for each one of them. The font-family property loads the font face whenever we utilize the paragraph tag.

Property Name	Options	Example	
font-family	Font families loaded on a computer	font-family: "Times New Roman"	
font-size	Use the exact specification		
	xx-small	large	font-size: 16 pt
	x-small	x-large	
	small	xx-large	
	medium		

The font-size is much more complex when designing a page layout. We can pick exact size by calling out sizes from xx-small to xx-large as shown below.



We can name the exact size of the paragraph text using the absolute size option of centimeters, inches, millimeters, point size, or picas. As web designers, we need to choose one of two strategies. Have the images and text occupy space based upon the relative size of the monitor and the items around them or the text and graphics have absolute measurements. In our projects, we use the exact size of 16 points.

In the table below, we continue to describe the font-style property and options for absolute measurements first and then relative sizing second. In later projects, we will use the em, ex, px, larger, smaller and % options to explore relative layouts.

Creating a Resume Webpage with Cascading Style Sheet Code

Property Name	Options	Example	
font-size	Or a value along with the unit of measurement or a relative value	font-size: 16 pt	
	Absolute Sizes with Values		
	cm		Centimeter 1 cm = 0.394 in.
	in		Inch
	mm		Millimeter 1mm = 0.039 in.
	pt		Point 1 pt = 0.014 in.
	pc		Picas 1pc = 12pt
	Relative Sizing		
	ex		X-height – the height of the letter “x”
	em		Ems – the height of the elements’ font
	px		Pixel – dependent upon screen resolution
	%		Percent – relative the element’s font size
	smaller		
	larger		

The font-style property has normal, italic or oblique choices.

Font-style	Normal Italic Oblique	font-style: italic
------------	-----------------------------	--------------------

The line-height property can be normal, multiple or have absolute or relative sizing as shown in the table below. The line height is the vertical spacing within the font size resides. We can have a 16-point font size that lies within a 30-point high space. We are most familiar with this concept when we set the spacing on a word processing document using one and a half or double spacing. In our project, we pick the normal line height for the standard web appearance.

Creating a Resume Webpage with Cascading Style Sheet Code

line-height	Normal Multiple		line-height: normal
	Absolute Sizes with Values		
	cm	Centimeter 1 cm = 0.394 in.	
	in	Inch	
	mm	Millimeter 1mm = 0.039 in.	
	pt	Point 1 pt = 0.014 in.	
	pc	Picas 1pc = 12pt	
	%	Percent – relative the element's font size	
	Relative Sizing		
	ex	X-height – the height of the letter “x”	
	em	Ems – the height of the elements' font	
	px	Pixel – dependent upon screen resolution	

Next, we define the font-weight using the normal, bold, bolder, lighter or 100 to 900 options. The linear scale of 100 through 900, 400 is the same weight as normal and 700 is the same weight as bold. For the paragraph declaration the font-weight is normal.

font-weight	Normal Bold Bolder Lighter 100, 200, 300, 400, 500, 600, 700, 800, 900	font-weight: normal
-------------	---	---------------------

Font variant can either be normal or small caps. Normal is regular while small caps will turn even lower case text into all uppercase characters.

font-variant	Normal Small Caps	font-variant: normal
--------------	----------------------	----------------------

We can make the text-transform property setting as capitalize, lowercase, uppercase or none. Capitalize will just have the first letter as uppercase. The first three choices will override the text as written in the HTML webpage and the last selection, “none” will result in the paragraph text appearing as entered into the body of the code.

Creating a Resume Webpage with Cascading Style Sheet Code

text-transform	Capitalize Lowercase Uppercase None	text-transform:
----------------	--	-----------------

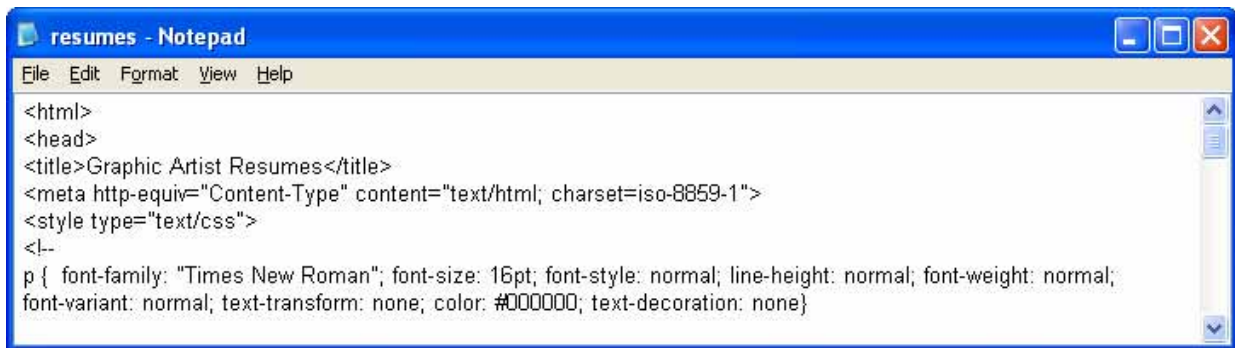
The color property works like the color option in HTML. The six characters 0 through F define the 24-bit hexadecimal color system that represents 16.7 million colors.

color	Any RGB color	color: #000000
-------	---------------	----------------

The text-decoration property has underline, overline, line-through, blink and none options.

text-decoration	Underline Overline Line-through Blink None	text-decoration: none
-----------------	--	-----------------------

The code for the paragraph is shown in figure 6.5.



```
resumes - Notepad
File Edit Format View Help
<html>
<head>
<title>Graphic Artist Resumes</title>
<meta http-equiv="Content-Type" content="text/html; charset=iso-8859-1">
<style type="text/css">
<!--
p { font-family: "Times New Roman"; font-size: 16pt; font-style: normal; line-height: normal; font-weight: normal;
font-variant: normal; text-transform: none; color: #000000; text-decoration: none}
```

Figure 6.5 – Redefining the P Tag

Redefining the A Tag in the Resume Web Page

The A tag statement has similarities to the paragraph tag except we choose the change the font-weight to bold and the text-transform to capitalize. Unlike the hyperlink in the HTML code, we set the text-decoration to none, so there will not be an underline below the word or phrase that will link to another web page or file.

```
a { font-family: "Times New Roman"; font-size: 16pt; font-style: normal;
line-height: normal; font-weight: bold; font-variant: normal; text-transform: capitalize;
color: #000000; text-decoration: none}
```

The code for the hyperlink is shown in figure 6.6.

Creating a Resume Webpage with Cascading Style Sheet Code

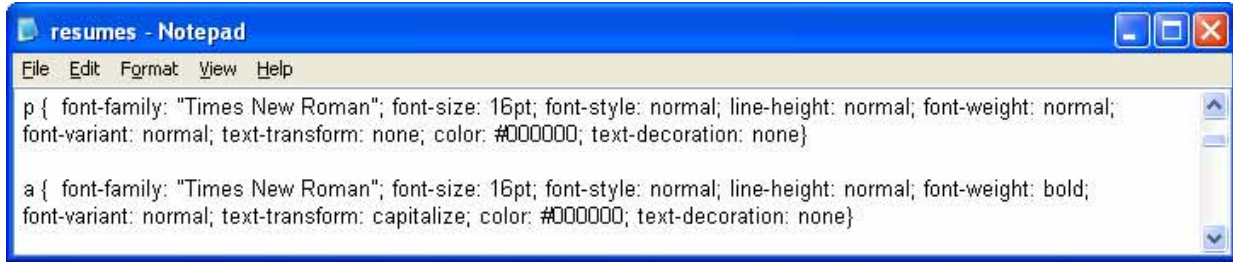


Figure 6.6 – Redefining the A Tag

Redefining the H1 Tag in the Resume Web Page

The H1 tag statement also has similarities to the paragraph tag except we choose the change the font-size is 36 point, the font-weight is bold, the text-transform is capitalize and the text-decoration is underline.

```
h1 { font-family: "Times New Roman"; font-size: 36pt; font-style: normal; line-height: normal; font-weight: bold; font-variant: normal; text-transform: capitalize; color: #000000; text-decoration: underline}
```

The code for the header is shown in figure 6.7.

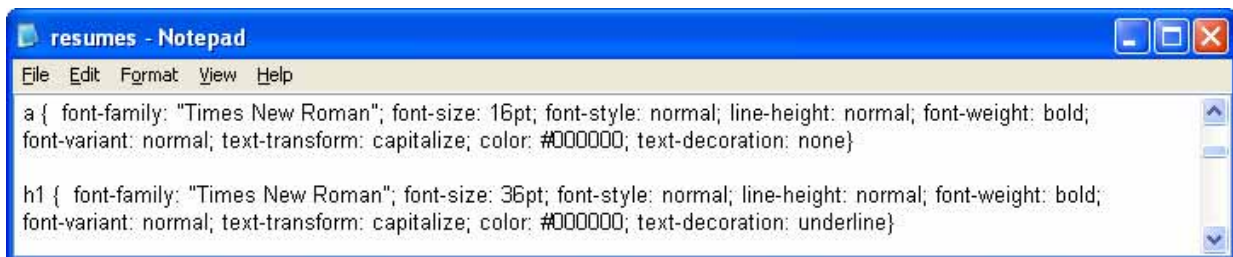


Figure 6.7 – Redefining the H1 Tag

Creating a Custom Style in the Resume Web Page

We want to reduce the size of the copyright statement, so we create a .style1 tag statement which has similarities to the paragraph tag except we choose the change the font-size is 10 point.

```
.style1 { font-family: "Times New Roman"; font-size: 10pt; font-style: normal; line-height: normal; font-weight: normal; font-variant: normal; text-transform: none; color: #000000; text-decoration: none}
```

The code for the header is shown in figure 6.8.

Creating a Resume Webpage with Cascading Style Sheet Code

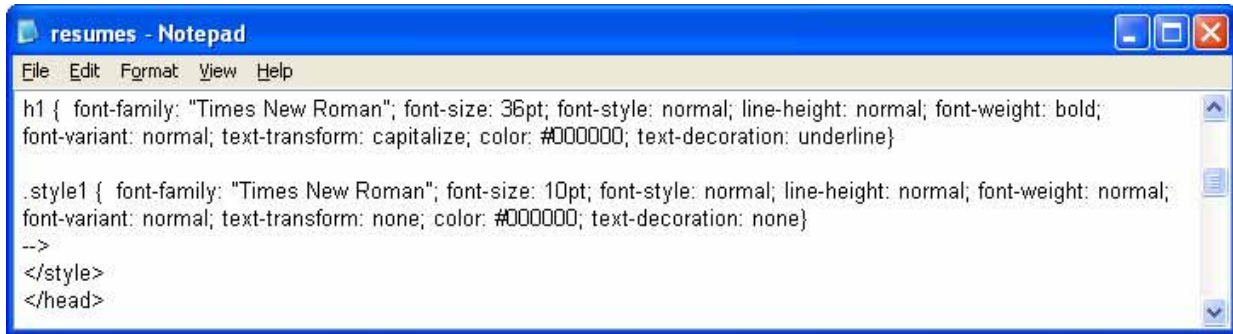


Figure 6.8 – Creating a Custom Style in the Resume Webpage

After the .style1 code, we close the HTML comment, the style tag and the head tag.

Defining the Body of the Resume Webpage

In many graphic application programs, the Color window or dialogue box will have a text box that displays the HTML code for any color we select. If we choose a basic red, the HTML Color code is #FF0000. When we are in the graphic program, we can use the Dropper tool to pick a color on our own image and again the HTML code in the Color window will reflect our choice.

After picking the web page's background color, we will assign the text color. We will type `text="#FFFFFF"` for white inside the Body expression after the bgcolor element.

Now we will assign precise colors to the hyperlinks in the Resume webpage with Cascading Style Sheet code webpage. There are three areas we want to code, link color, active link color and visited link color.

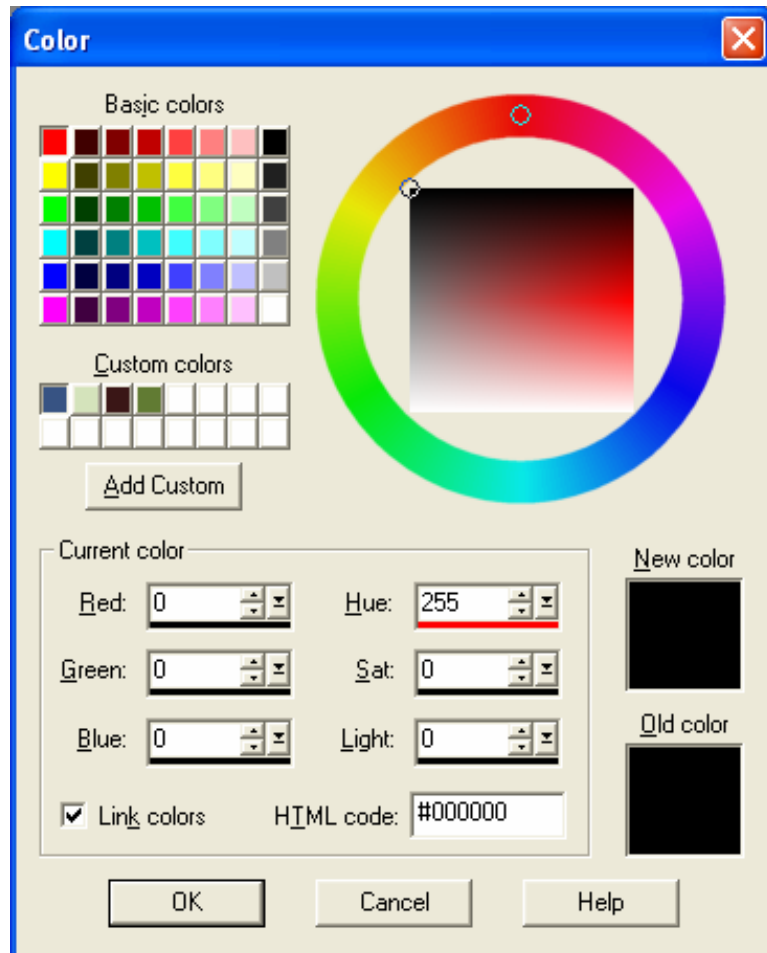


Figure 6.9 – Determining the HTML Color Code

Creating a Resume Webpage with Cascading Style Sheet Code

We only declare the background color with the bgcolor element since the link and text color are defined in the Cascading Style Sheet code.

```

-->
</style>
</head>

<body bgcolor="#FFFFFF">
    
```

Figure 6.10 – Starting the Body and Defining the Page Properties

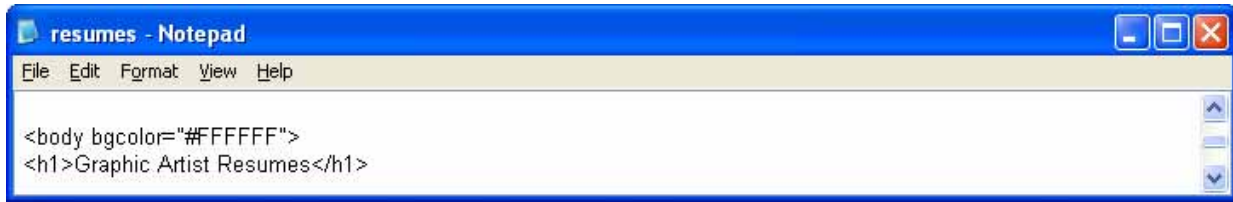
Tag	Name	Description
Body	Body	This is the area of the web page that will contain the graphics, text and forms
Example	Start Tag	End Tag
<pre> <head> <title>Graphic Artist Resumes </title> </head> <body> </pre>	<pre> <body> </pre>	<pre> </body> </pre>

Element	Name	Description
Bgcolor	Background Color	Gives a background color to the page body, table or cell
Example	Start Tag	End Tag
<pre> <<body bgcolor="#000000" text="#000000" link="#FFFFFF" vlink="#FFFFFF" alink="#FFFFFF"> </body> </pre>		

Adding Redefined Header Text to the Web Page

After the Body tag, we use the redefined H1 tag to place a banner at the top of the Resume webpage. Enter the code as shown in figure 6.11.

Creating a Resume Webpage with Cascading Style Sheet Code

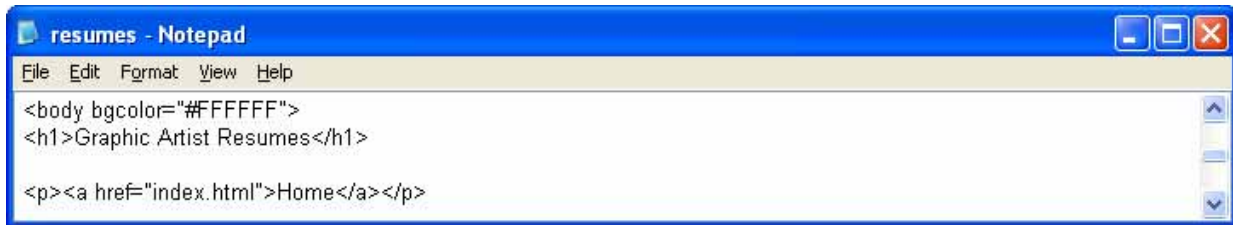


```
resumes - Notepad
File Edit Format View Help
<body bgcolor="#FFFFFF">
<h1>Graphic Artist Resumes</h1>
```

Figure 6.11 – Inserting the New Redefined Header H1

Adding the Redefined Hyperlinks and Paragraphs to the Page

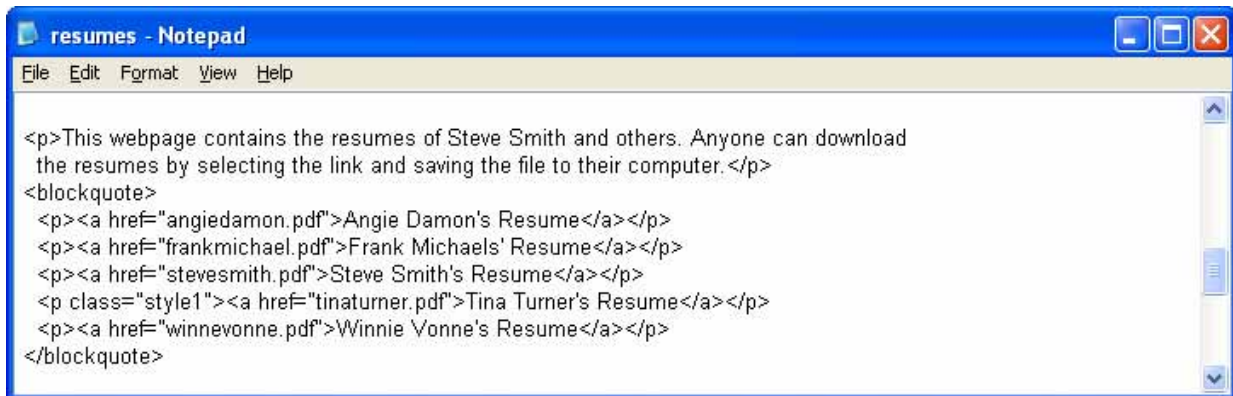
We only want the Home link in the storyboard, so we add the code as shown in figure 6.12.



```
resumes - Notepad
File Edit Format View Help
<body bgcolor="#FFFFFF">
<h1>Graphic Artist Resumes</h1>
<p><a href="index.html">Home</a></p>
```

Figure 6.12 – Inserting the New Redefined Hyperlink

We begin this section of the webpage with a regular paragraph sentence telling the Web Browser that they can download the resumes to their computers.



```
resumes - Notepad
File Edit Format View Help
<p>This webpage contains the resumes of Steve Smith and others. Anyone can download
the resumes by selecting the link and saving the file to their computer.</p>
<blockquote>
<p><a href="angiedamon.pdf">Angie Damon's Resume</a></p>
<p><a href="frankmichael.pdf">Frank Michaels' Resume</a></p>
<p><a href="stevesmith.pdf">Steve Smith's Resume</a></p>
<p class="style1"><a href="tinaturner.pdf">Tina Turner's Resume</a></p>
<p><a href="winnevonne.pdf">Winnie Vonne's Resume</a></p>
</blockquote>
```

Figure 6.13 – Inserting the Resume Hyperlinks

For the resume webpage, we will convert the word processing documents to PDF files so they can be read in the Adobe Reader that the majority of computers have. We place the blockquote tag around the all five lines of code to indent the hyperlinked statements one space over to the right.

Creating a Resume Webpage with Cascading Style Sheet Code

Tag	Name	Description
p	Paragraph	Starts a new paragraph
Example	Start Tag	End Tag
<pre><head> <title>About Us</title> </head> <body> <p>About Ohio Digital Art</p> </body></pre>	<pre><p></pre>	<pre></p></pre>

Tag	Name	Description
Blockquote	Increase Indent	Tabs the text over in the webpage body
Example	Start Tag	End Tag
<pre><blockquote> <p>So You Can Sit Back and Relax </p> </blockquote></pre>	<pre><blockquote></pre>	<pre></blockquote></pre>

Adding the Email Link to a Webpage

In this statement, we place the “mailto:” statement in front of the email address so that when the Web Browser clicks on the Webmaster word, the email application launches on the person’s computer. The mailto code shown below is seen in figure 6.14.

```
<a href="mailto:webmaster@ohiodigitalart.com">webmaster</a>
```



Figure 6.14 – Email Links in a Webpage

Applying a Custom Style to the Copyright Statement

For our copyright statement, we begin with the paragraph tag and we define the class as “style1”. Type © to get the copyright © symbol. Remember, a copyright statement should be at the bottom of every web page.



Figure 6.15 – Applying a Custom Style to the Copyright Statement

Closing the HTML and Cascading Style Sheet Web Page

After keying in all of the rows and cells, we type `</body>` to close the body of our web page. Press the Enter button and type `</html>` to close the HTML web page.

The entire solution for our Resume webpage with Cascading Style Sheet code webpage is shown below.

```
<html>
<head>
<title>Graphic Artist Resumes</title>
<meta http-equiv="Content-Type" content="text/html; charset=iso-8859-1">
<style type="text/css">
<!--
p { font-family: "Times New Roman"; font-size: 16pt; font-style: normal; line-height: normal; font-weight: normal;
font-variant: normal; text-transform: none; color: #000000; text-decoration: none}

a { font-family: "Times New Roman"; font-size: 16pt; font-style: normal; line-height: normal; font-weight: bold;
font-variant: normal; text-transform: capitalize; color: #000000; text-decoration: none}

h1 { font-family: "Times New Roman"; font-size: 36pt; font-style: normal; line-height: normal; font-weight: bold;
font-variant: normal; text-transform: capitalize; color: #000000; text-decoration: underline}

.style1 { font-family: "Times New Roman"; font-size: 10pt; font-style: normal; line-height: normal; font-weight:
normal; font-variant: normal; text-transform: none; color: #000000; text-decoration: none}
-->
</style>
</head>

<body bgcolor="#FFFFFF">
<h1>Graphic Artist Resumes</h1>
<p><a href="index.html">Home</a></p>
```

Creating a Resume Webpage with Cascading Style Sheet Code

```
<p>This webpage contains the resumes of Steve Smith and others. Anyone can download
the resumes by selecting the link and saving the file to their computer.</p>
<blockquote>
  <p><a href="angiedamon.pdf">Angie Damon's Resume</a></p>
  <p><a href="frankmichael.pdf">Frank Michaels' Resume</a></p>
  <p><a href="stevesmith.pdf">Steve Smith's Resume</a></p>
  <p class="style1"><a href="tinaturner.pdf">Tina Turner's Resume</a></p>
  <p><a href="winnevonne.pdf">Winnie Vonne's Resume</a></p>
</blockquote>

<br>
<br>
<br>
<p align="left">If you have any questions regarding the information on this page,
send your comments to the <a href="mailto:webmaster@ohiodigitalart.com">webmaster</a>.</p>
<br>
<br>
<br>
<p align="center" class="style1">Copyright &copy; 2009 by Ohio Digital Art. All Rights Reserved.</p>
</body>
</html>
```

Viewing the Web Page with the Web Browser

To check and see if our HTML and Cascading Style Sheet page works properly go to Internet Explorer. Chose file/open and search for the file we saved as our HTML Resume webpage. Open the file.



Figure 6.16 – Viewing the Resume Webpage

Creating a Resume Webpage with Cascading Style Sheet Code

Once we chose our file and open up our HTML Resume webpage with Cascading Style Sheet code webpage, the page should show the banner, graphics and text. If the page does not show anything or looks funny, then there is an error in our code. Make sure we have all our brackets in the right place and that no code is missing a bracket. After we make our changes, save the HTML file again and view the page in the browsing application. When our page is error free, then we have just successfully made our first Resume webpage with Cascading Style Sheet code webpage using HTML programming.

*** World Class CAD Challenge 15-9 * - Create a Resume webpage with Cascading Style Sheet code in Microsoft Notepad or other similar software application that communicates adequately to your target audience. The web page should contain no errors. Complete this task in less than 60 minutes to maintain your World Class ranking.**

Send your best time and a copy of your webpage for verification to the authors of these problems to have your name, location and time posted. See the web site for instructions.

www.worldclasscad.com