

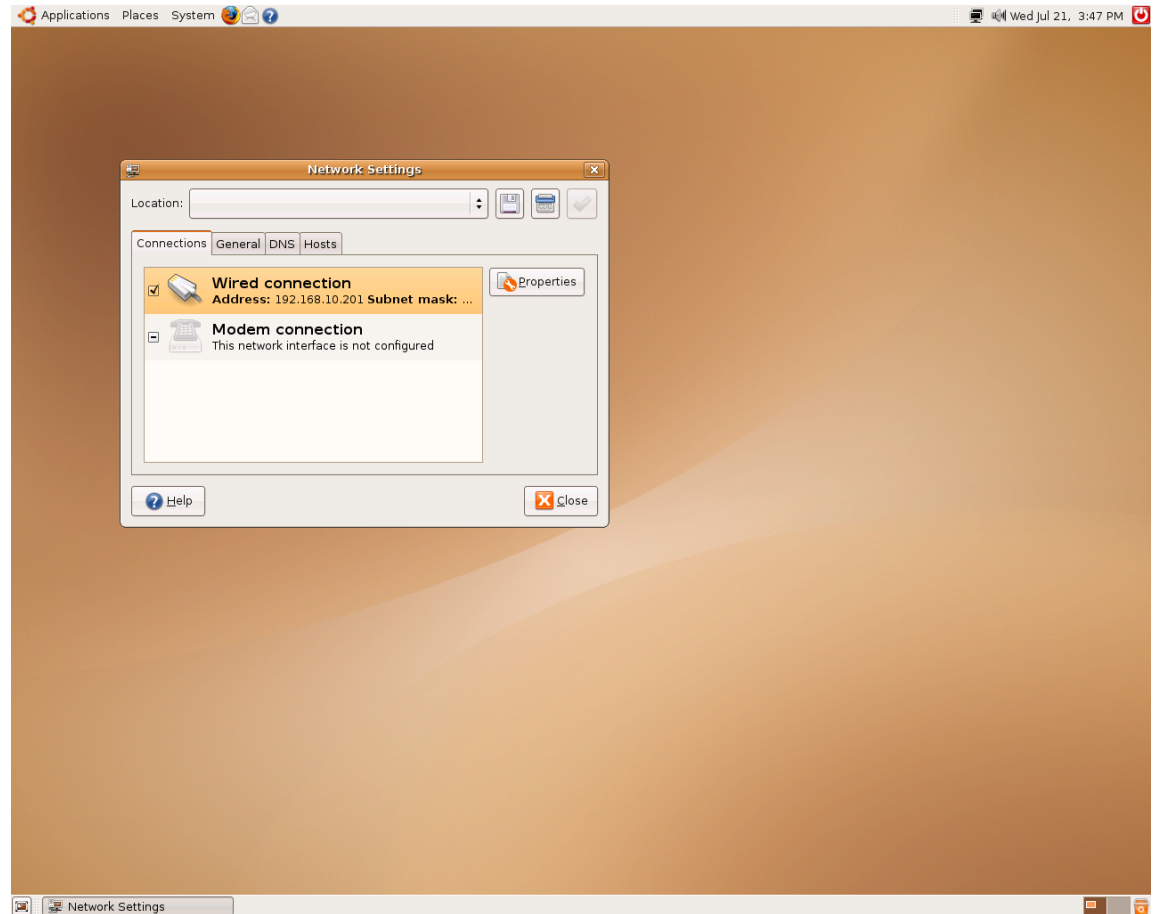
TCP/IP Addressing in Ubuntu

July 21, 2010

Modify Network Connections

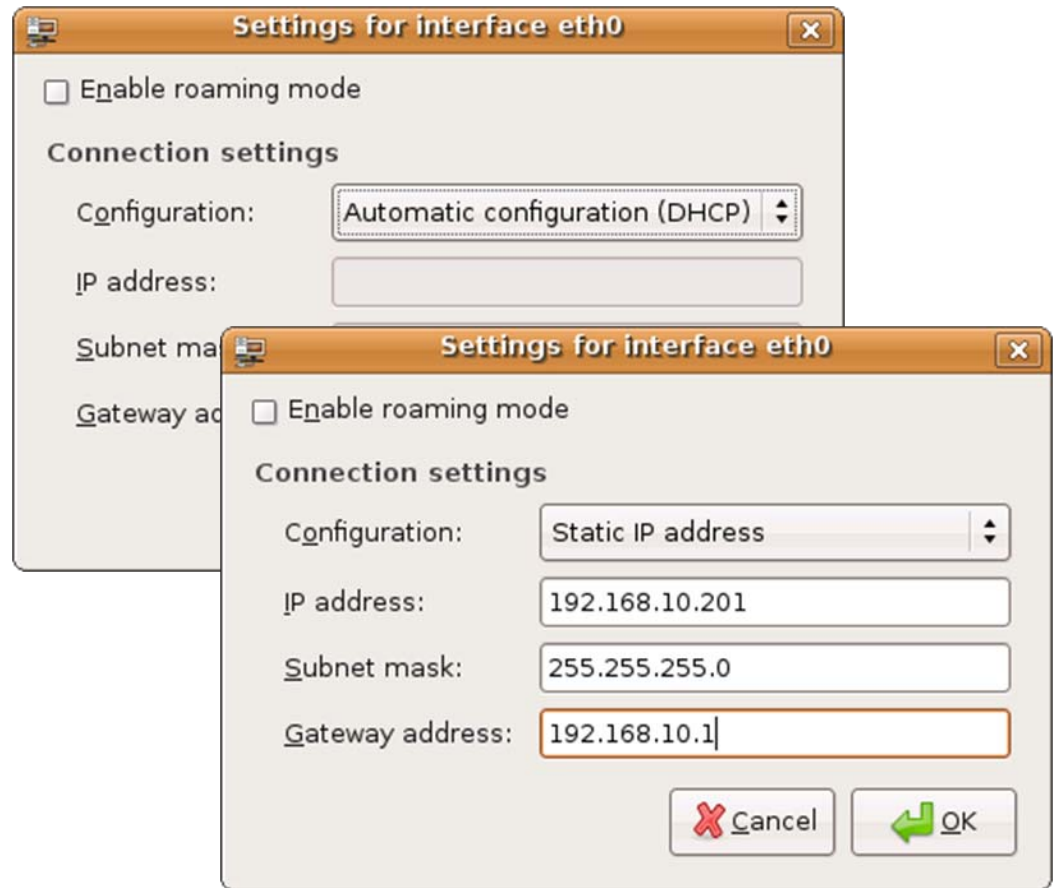
On the Ubuntu Desktop, we go to System on the Menu bar, and we select Preferences from the list. Then, we choose Network Connections.

When we open the Network Settings dialogue box, we can see the wired network card on our Ubuntu computer. We should press the Properties button to set the static IP address for our computer.



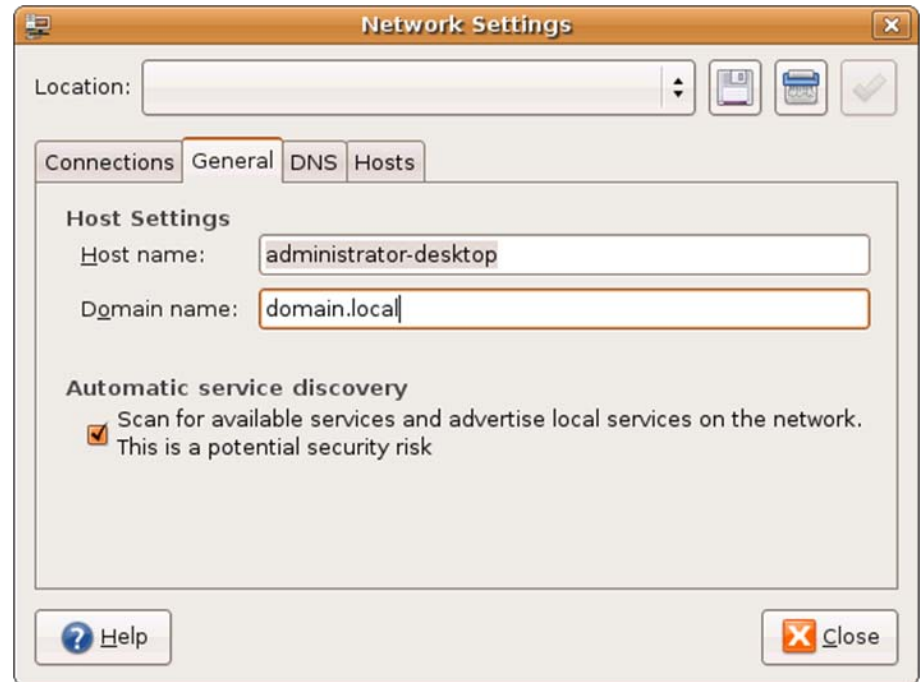
Open Network Connections

Initially, the Ubuntu default for network cards is DHCP. In our case, we want to setup for Static IP, so we change the configuration to static as shown. We then type in our IP address, Subnet Mask and Gateway (router) address. We press the OK button to continue.



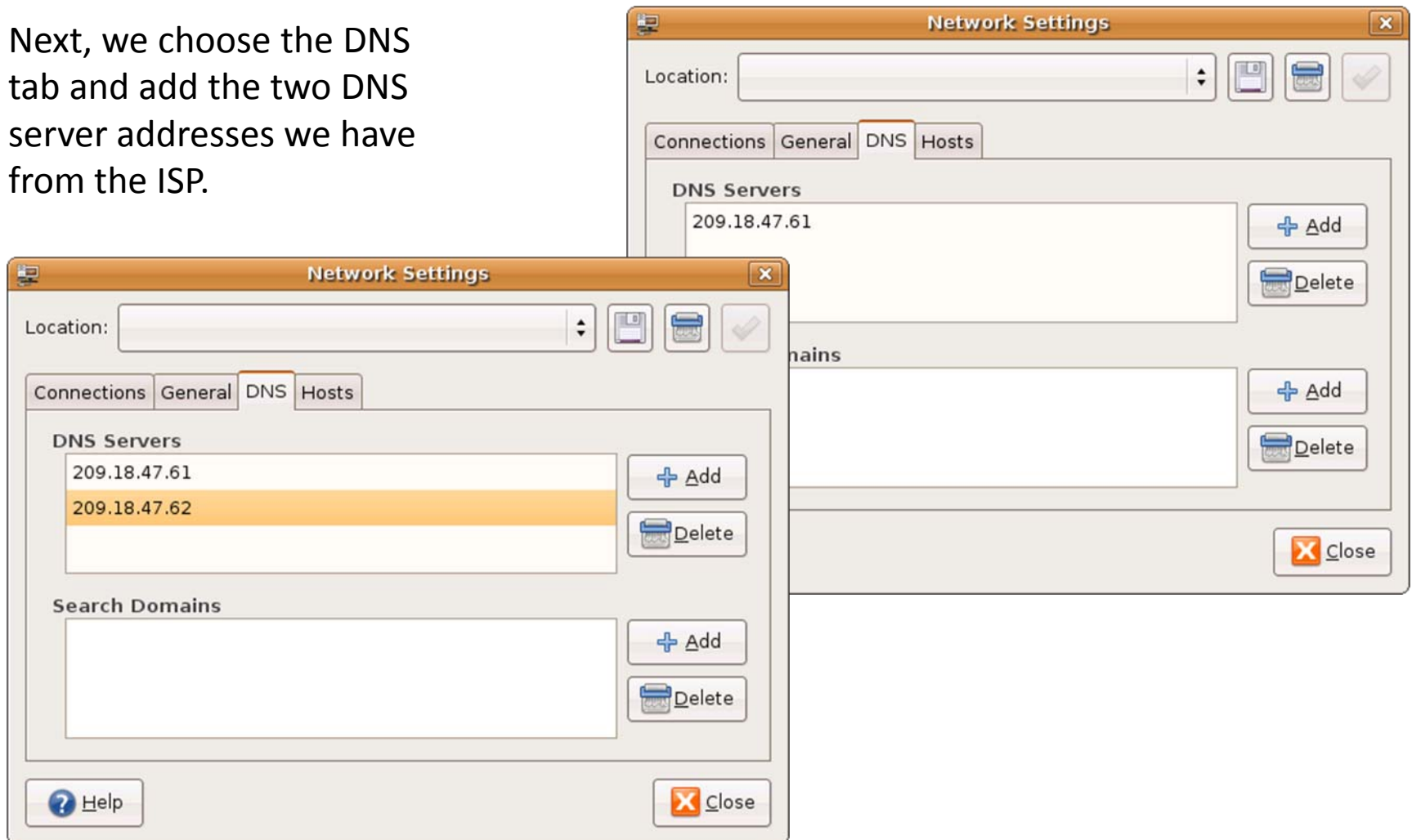
Adding the Domain

If we are on a domain, we can type the domain name after selecting the General tab.



Adding DNS Addresses

Next, we choose the DNS tab and add the two DNS server addresses we have from the ISP.



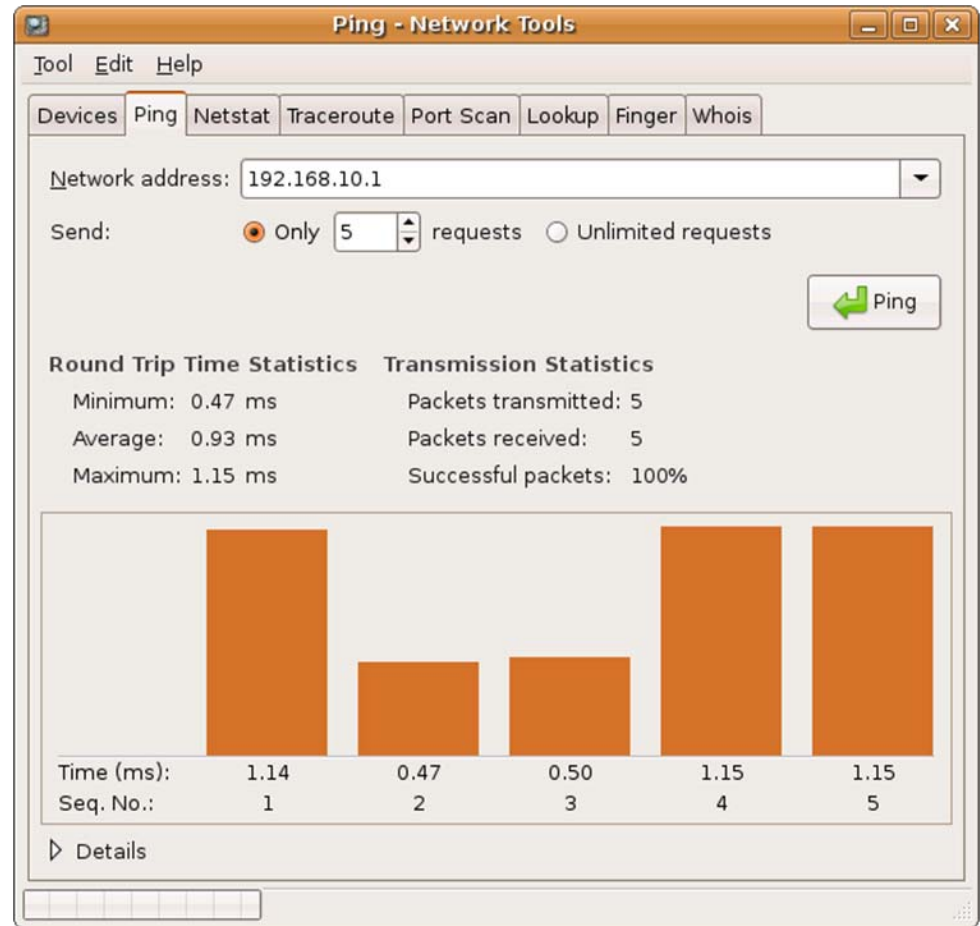
The Host Tab

We can add the router IP address to the list of hosts.

To save all the change, we close the Network Settings dialogue box.

Pinging the Router

On the Ubuntu Desktop, we go to System on the Menu bar, and we select Preferences from the list. Then, we choose Network Utilities. The second tab is Ping. We should type the IP address of the router in the Network Address textbox and press the Ping button. We can see the successful report about our connection.



Connecting to the Internet

After Pinging the router, we will choose the icon of the small world just to the right of System on the Menu bar. We can type our favorite URL in the Address Bar textbox. We now have Internet connections. We can also download additional Ubuntu applications to improve our computers.

The screenshot shows a Mozilla Firefox browser window displaying the World Class CAD website. The browser's address bar shows the URL <http://www.worldclasscad.com/>. The website features a navigation menu with categories such as CAD Training, Programming, Architecture, Mechanical, Civil Design, Energy Mgmt, Electrical, Designing, Mathematics, Office Aps, Ohio STEM, and Poster. A central section titled "World Class CAD Online Resources" includes a world map and lists resources for 3D AutoCAD, 2D AutoCAD, Mechanical, Electrical, Architectural, Office Trng, Networking, Design, Math, and Project. The footer contains links for About Us, Bookstore, Advertising, Colleges, News, Policies, Press Release, Register, Video Lessons, and WCC Certs. Copyright information at the bottom reads: "Copyright © 2001-2010 by World Class CAD, LLC. All Rights Reserved."