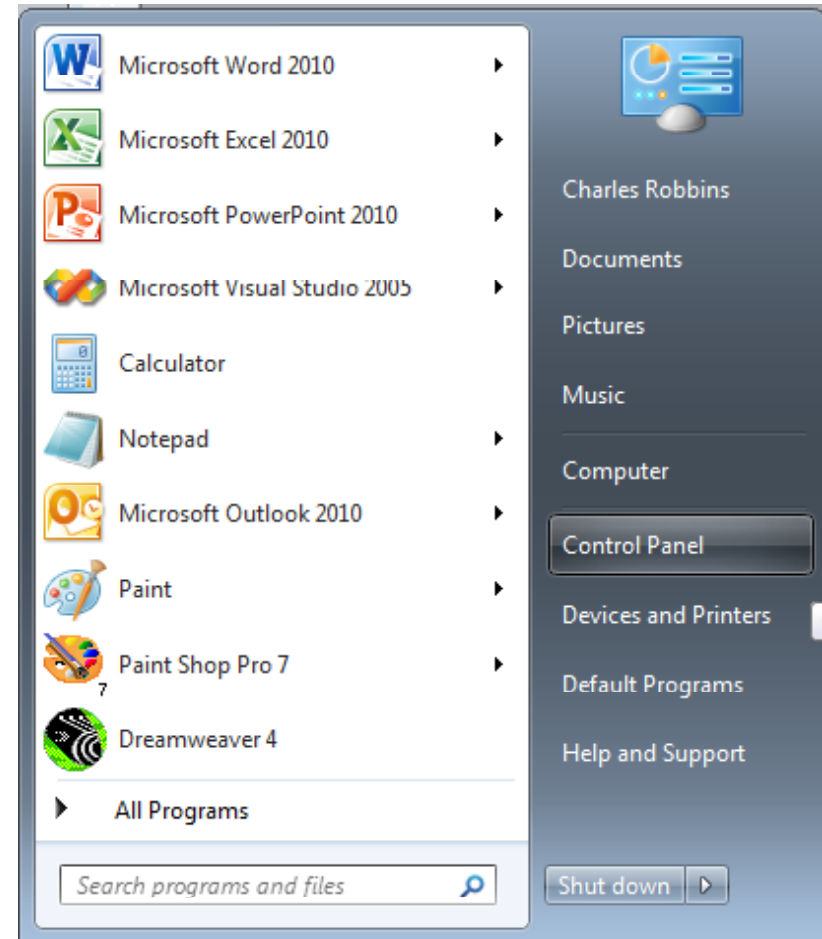


Changing Boot Up, Services and Startup Applications

February 8, 2012

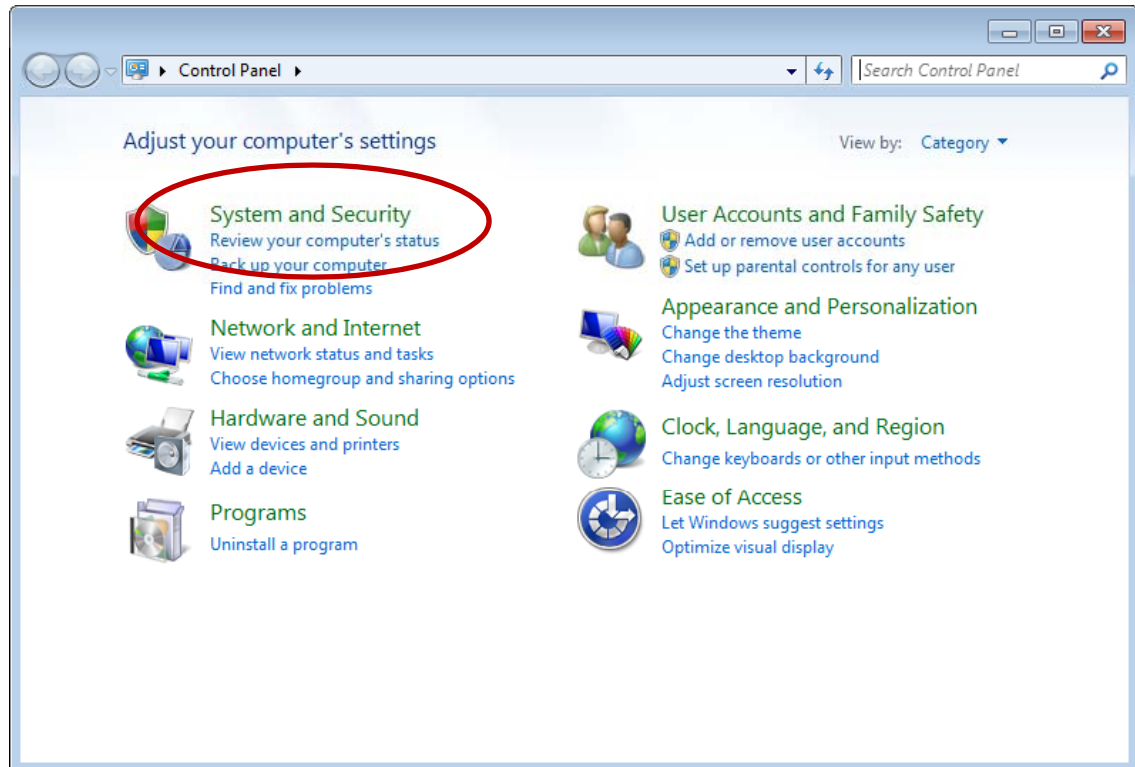
Control Panel

To access the list of applications that are started when the computer is turned on, we choose Control Panel on the Start menu.



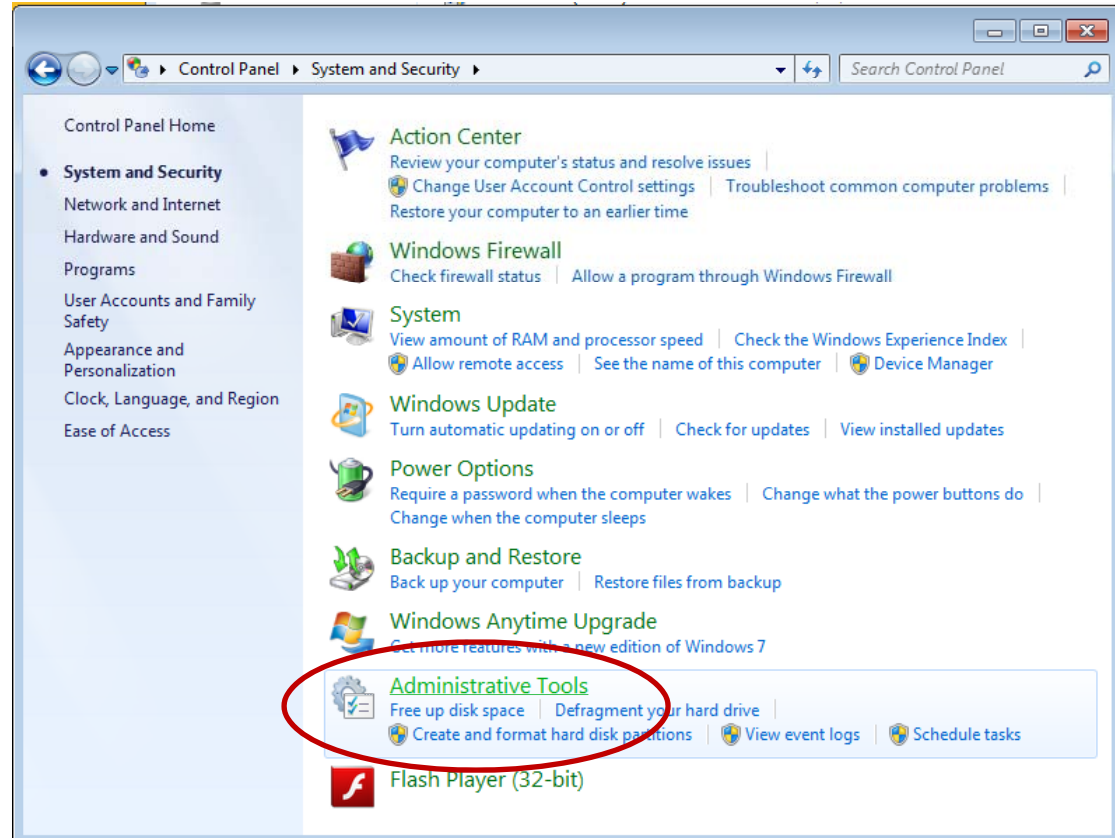
System and Security

Next, we select the System and Security hyperlink on the Control Panel.



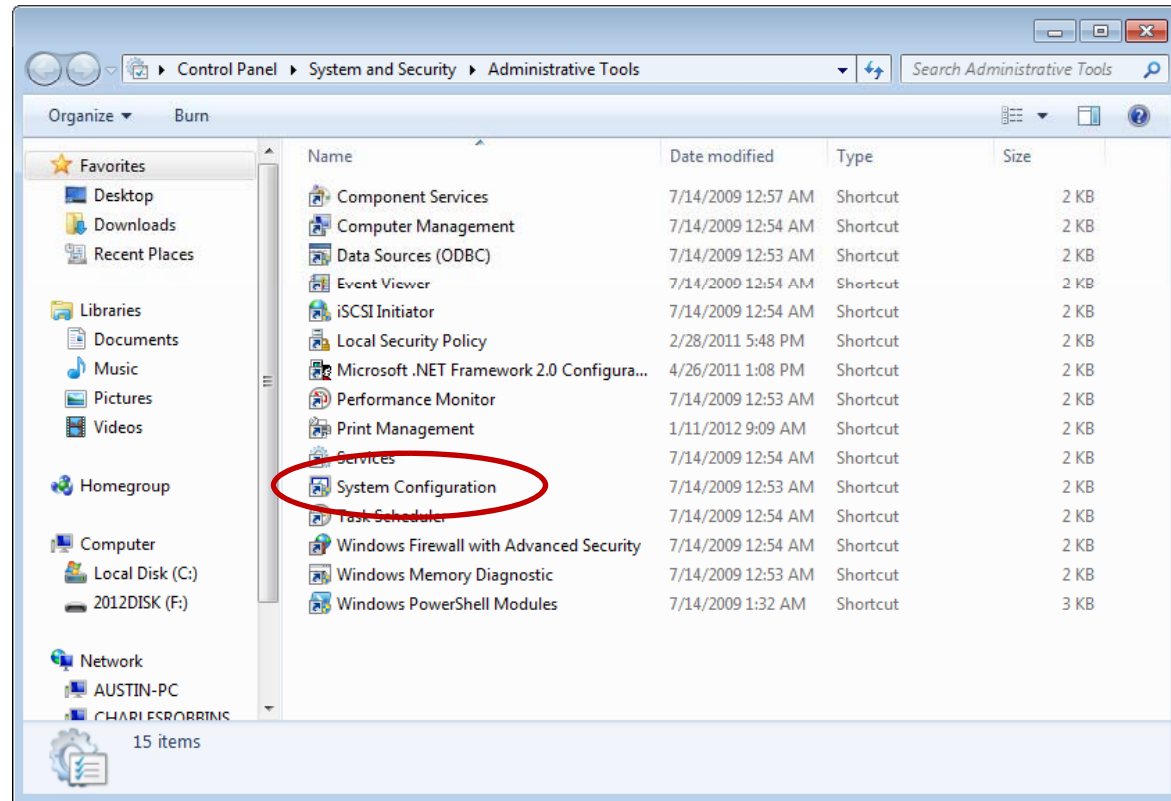
Administrative Tools

Now, we pick Administrative Tools.



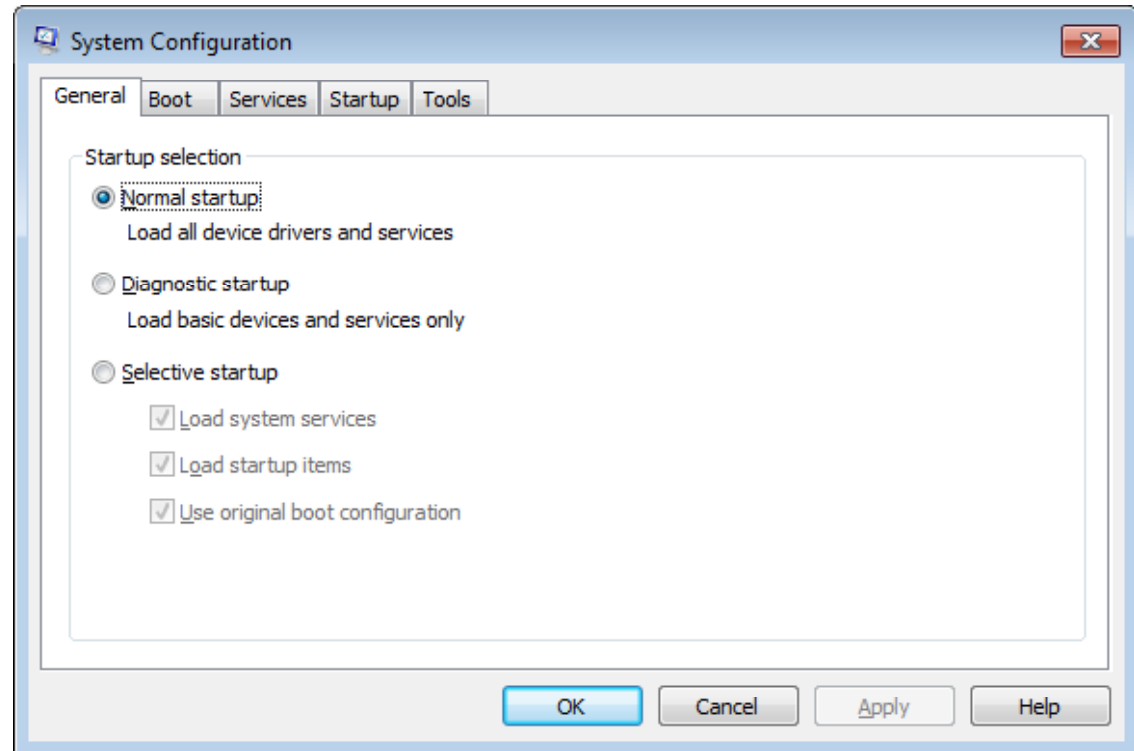
System Configuration

We continue by picking the System Configuration hyperlink from the list of Administrative Tools.



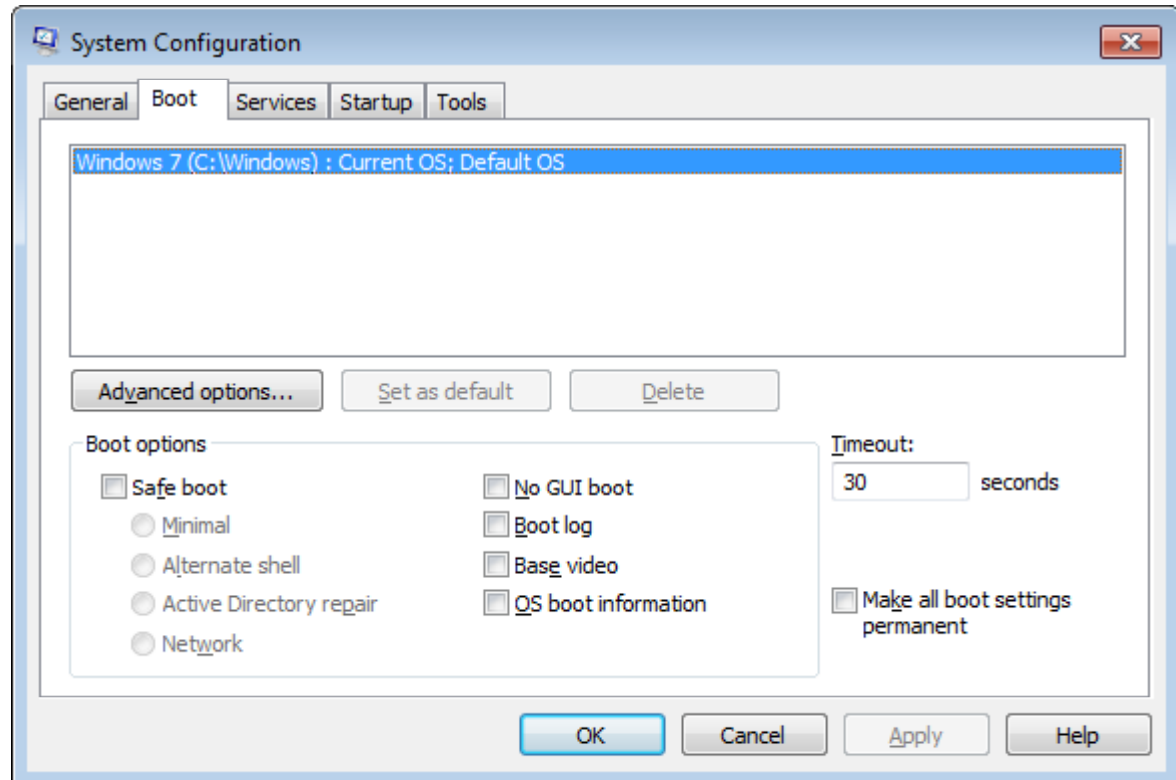
General Tab

In the System Configuration window, we have five tabs. They are General, Boot, Services, Startup and Tools. In the General tab we can opt for Normal startup, Diagnostic startup or Selective startup. The default option is the Normal startup. A diagnostic startup will only load basic devices and services. When we pick Selective startup, we can annotate three choices which are load system services, startup items and use original boot configuration.



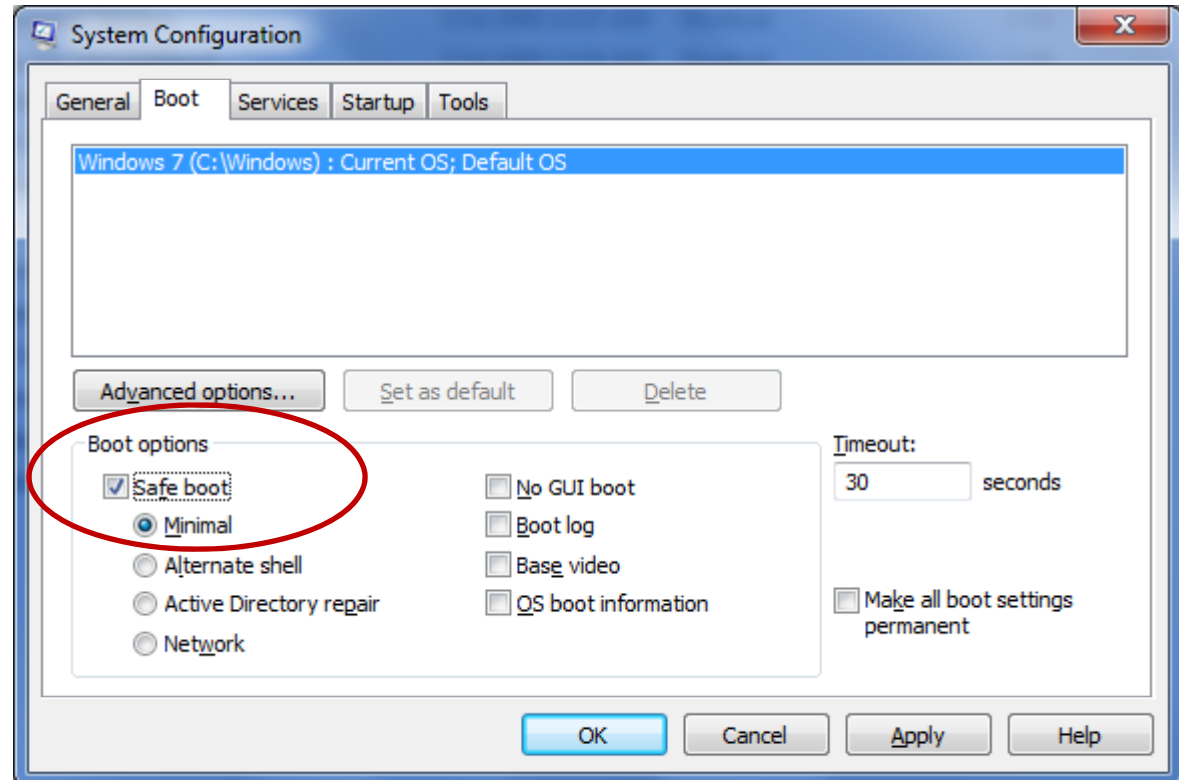
Boot Tab

On the Boot tab, we can select the Windows volume we want to boot. This can be handy for dual boot systems.



Safe Boot Checkbox

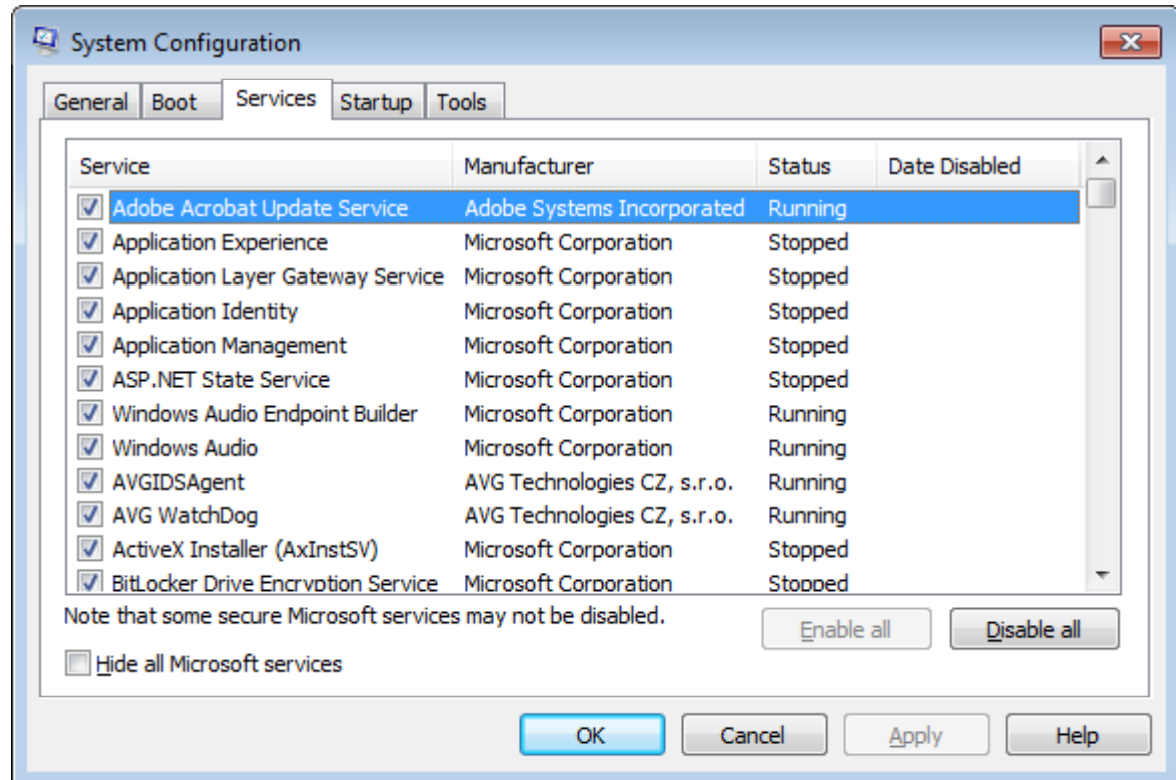
We can annotate the Safe boot checkbox and opt for Minimal which is a safe boot with only critical services and no networking. Alternate shell is similar to minimal but with no graphical user interface. Active Directory repair is safe mode with Active Directory. Network is a safe mode boot with networking enabled.



We have four checkboxes, No GUI boot, Boot log, Base video and OS boot information if we desire alterations.

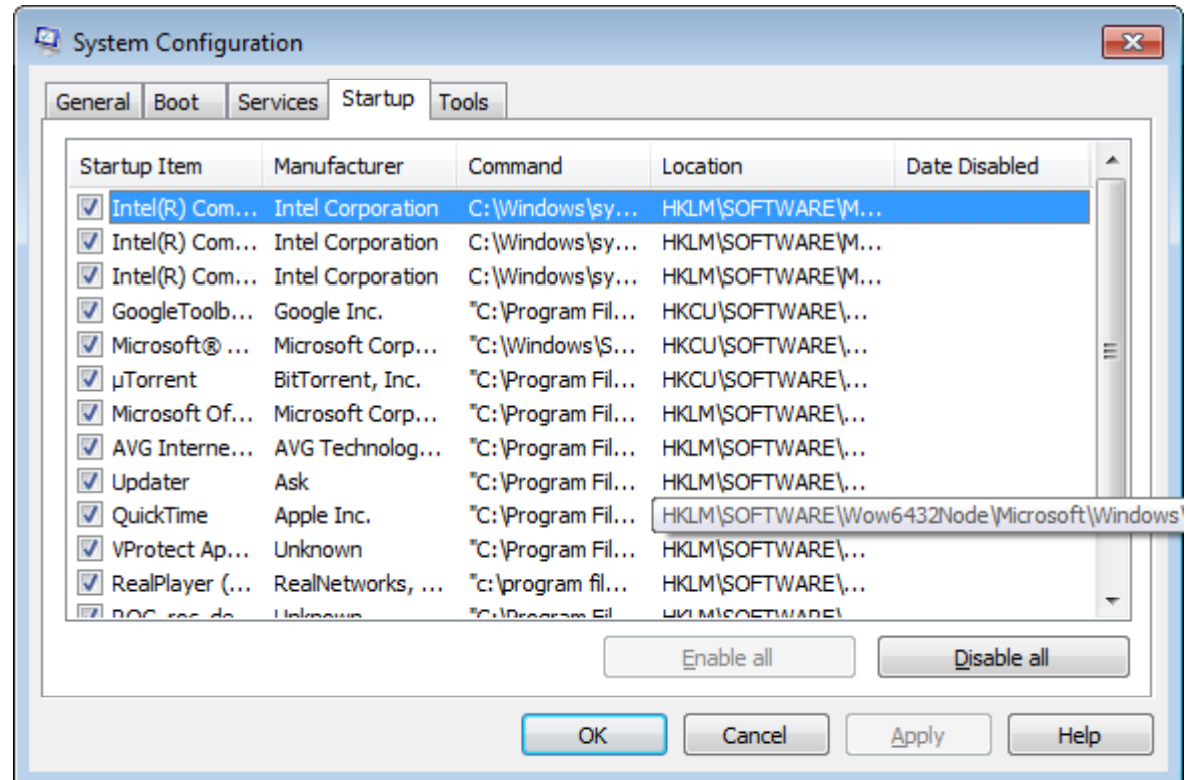
Services Tab

The Services tab shows a list of services and the status of each one. We have the option to stop or run each service.



Startup Tab

When a computer starts up, there are programs that are running. These applications are listed on this tab. To discontinue the program at startup, we just uncheck the box to the left. The more programs that run at startup will take system resources and slow the computer down. We should review the list periodically.



Tools Tab

We can launch a tool from the Tools tab.

To make changes, press the Apply button. To close up the System Configuration window, we should pick the OK button.

