

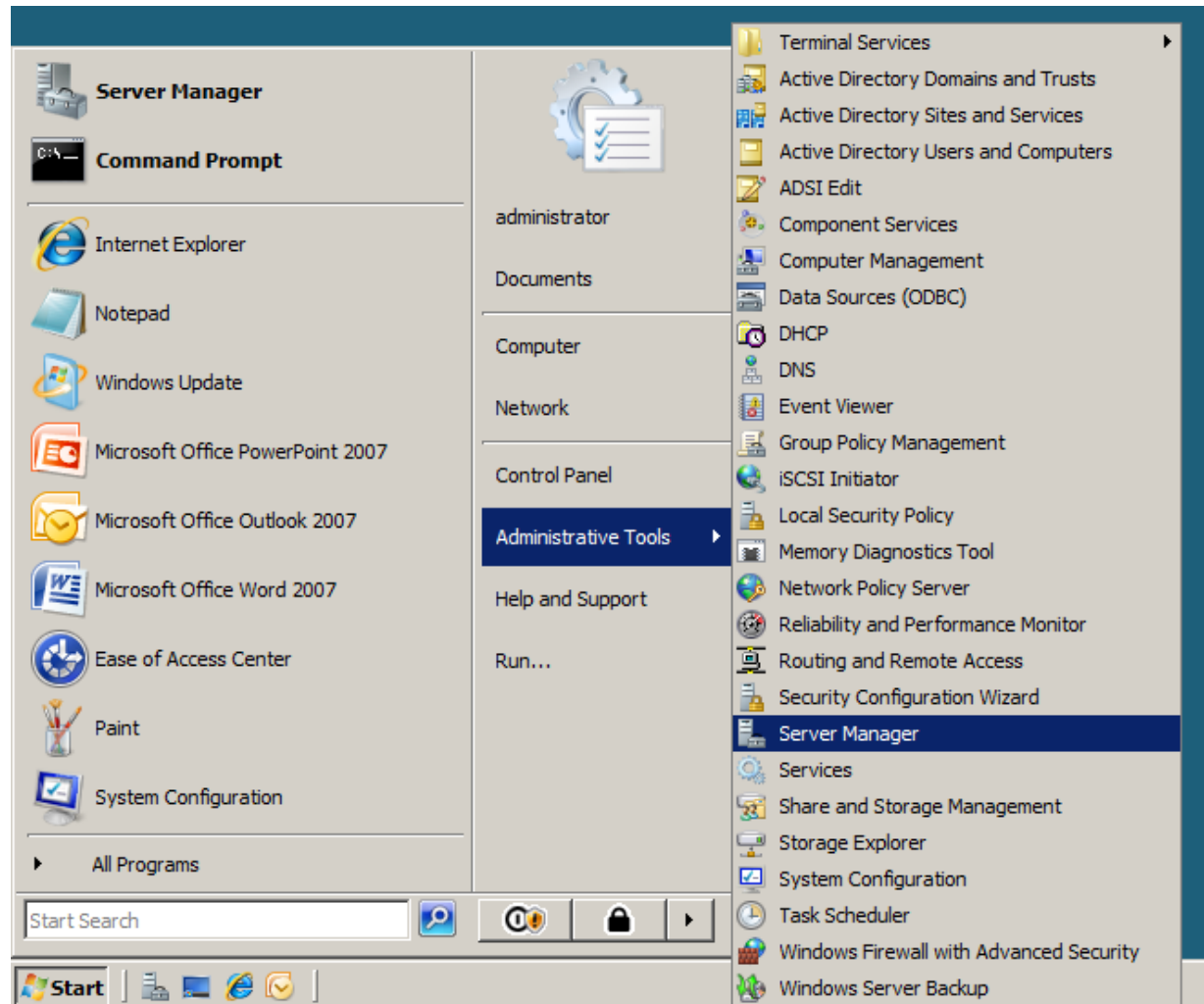
# Installing Windows Powershell on a Windows Server 2008

July 20, 2011

# 2008 Server Start Menu

To run scripts to setup new users and groups or to modify accounts, we need to use the Microsoft PowerShell software. The program is not loaded by default, so we need add the feature to our server.

At the Start menu, we select Administrative Tools and Server Manager.



# Server Manager

In the left pane of the Server Manager window, we choose Features.

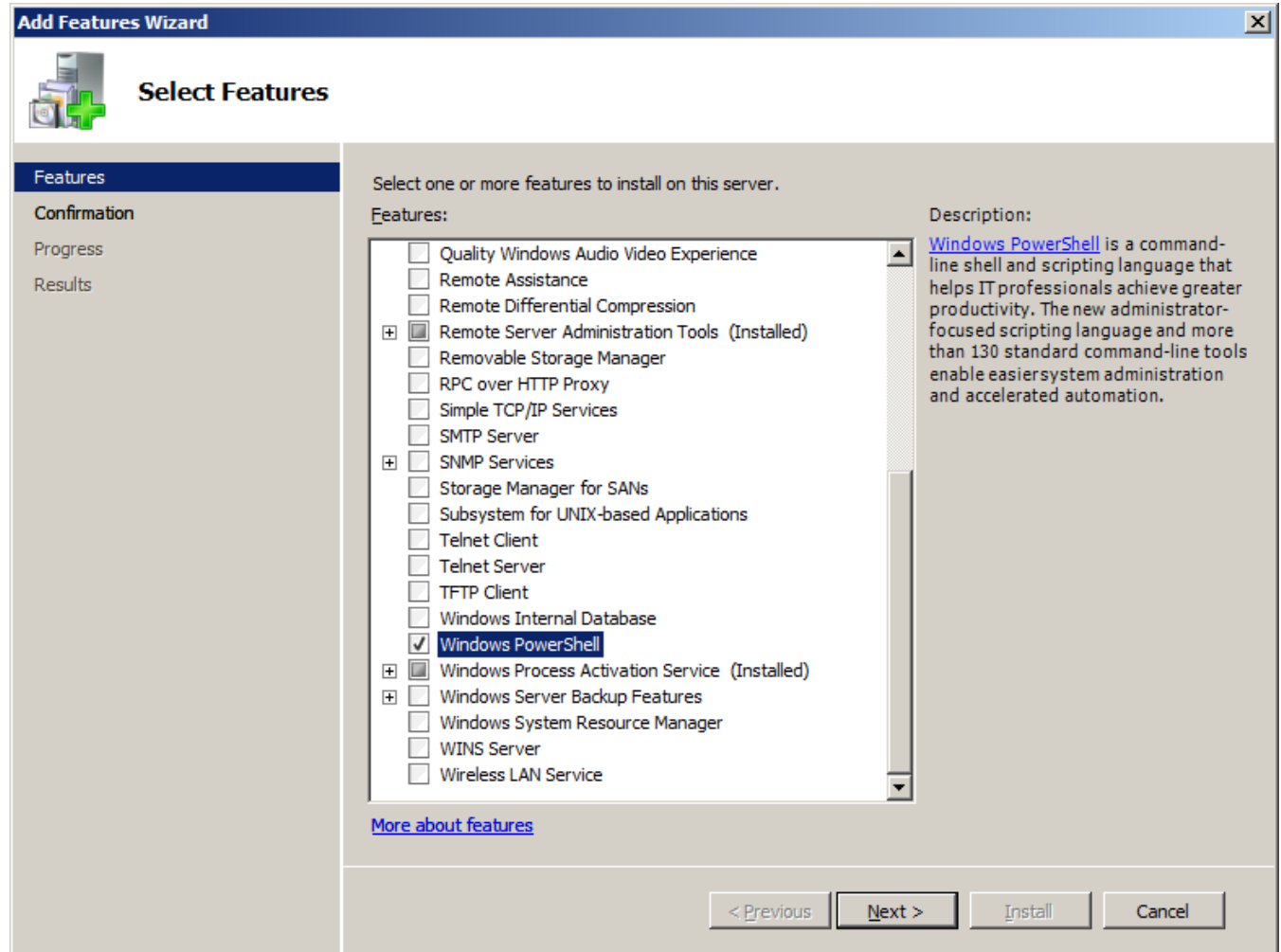
The screenshot displays the Windows Server Manager interface. The left-hand navigation pane shows a tree view with 'Roles' selected. The main content area is titled 'Roles' and provides an overview of installed roles. It includes a 'Roles Summary' section showing 4 of 18 roles installed, with a list of roles: Active Directory Domain Services, DHCP Server, DNS Server, and Network Policy and Access Services. Below this is the 'Active Directory Domain Services' section, which includes a 'Role Status' summary (Messages: None, System Services: 9 Running, 1 Stopped, Events: 4 informational in the last 24 hours) and a 'Role Services' table. The table lists the following role services and their status:

Role Service	Status
Active Directory Domain Controller	Installed
Identity Management for UNIX	Not installed
Server for Network Information Services	Not installed
Password Synchronization	Not installed
Administration Tools	Not installed

At the bottom of the window, a status bar indicates 'Last Refresh: 10/6/2010 5:22:04 PM' and provides a 'Configure refresh' link.

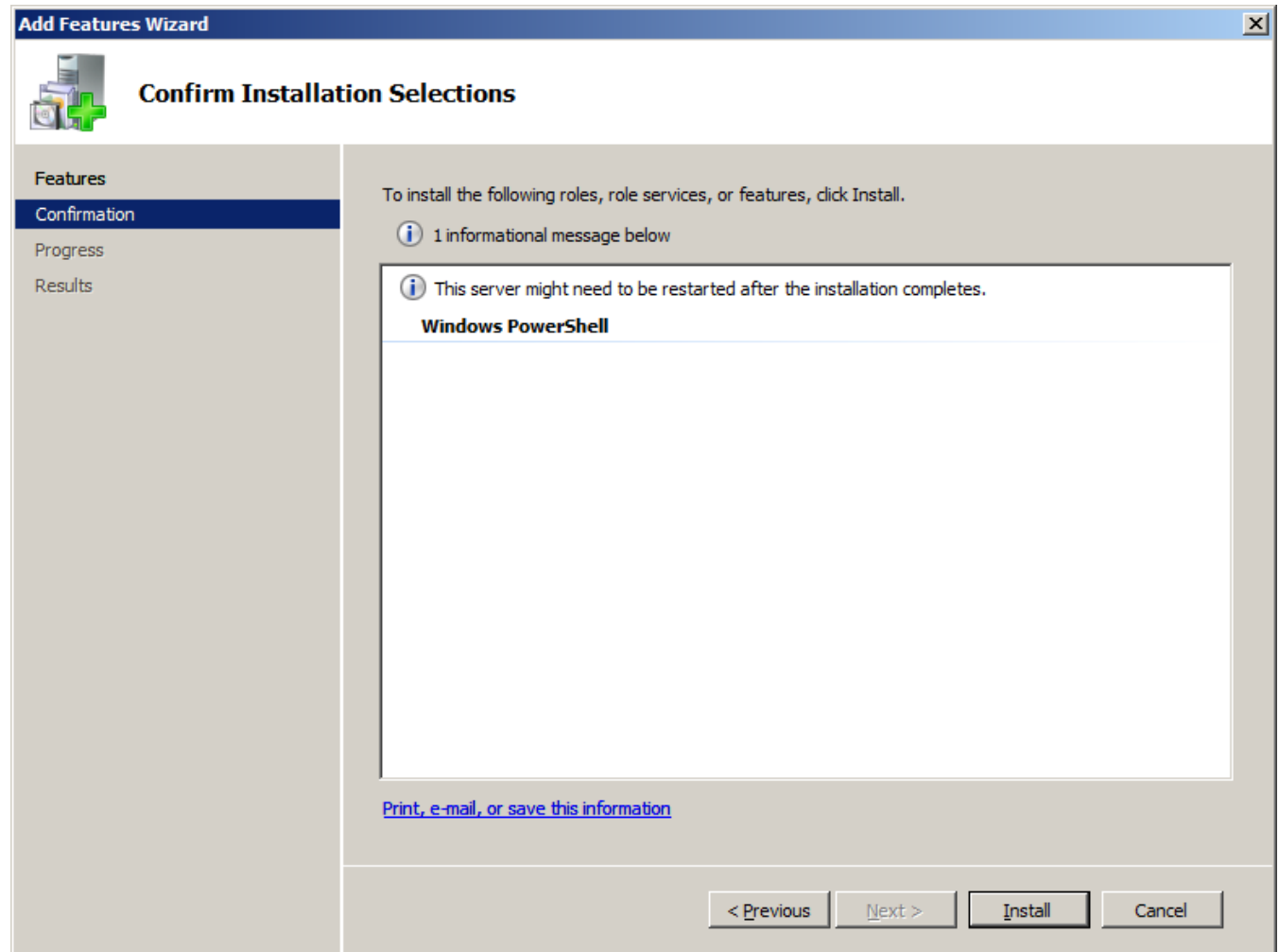
# Windows PowerShell

Annotate the Windows PowerShell checkbox on the features list.



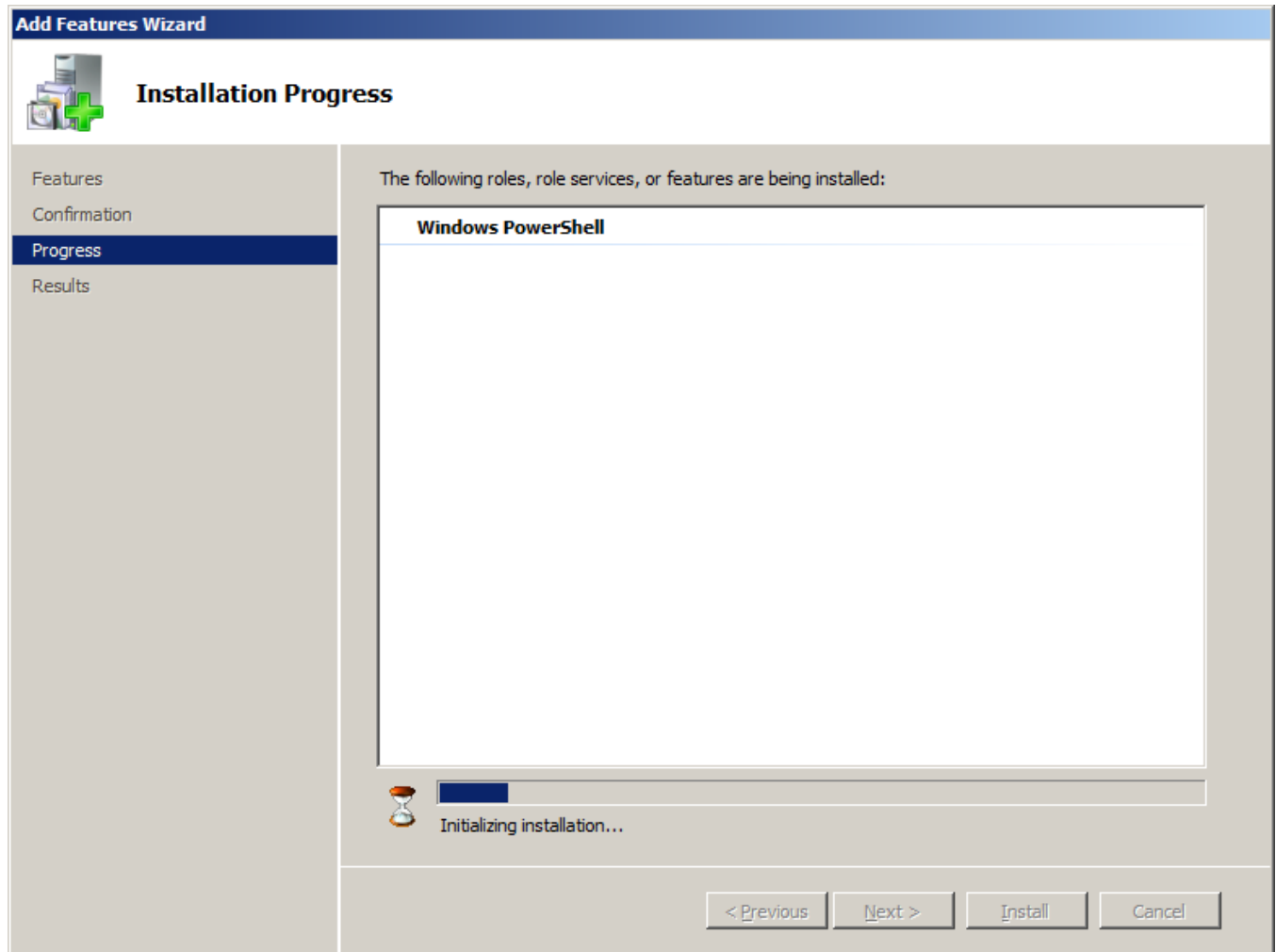
# Confirm Installation Selections

Press the Install command button on the Confirm Installation Selection window.



# Installation Progress

It will take several minutes to load the program.



# Installation Results

The Installation Results window will show the process is now complete.

