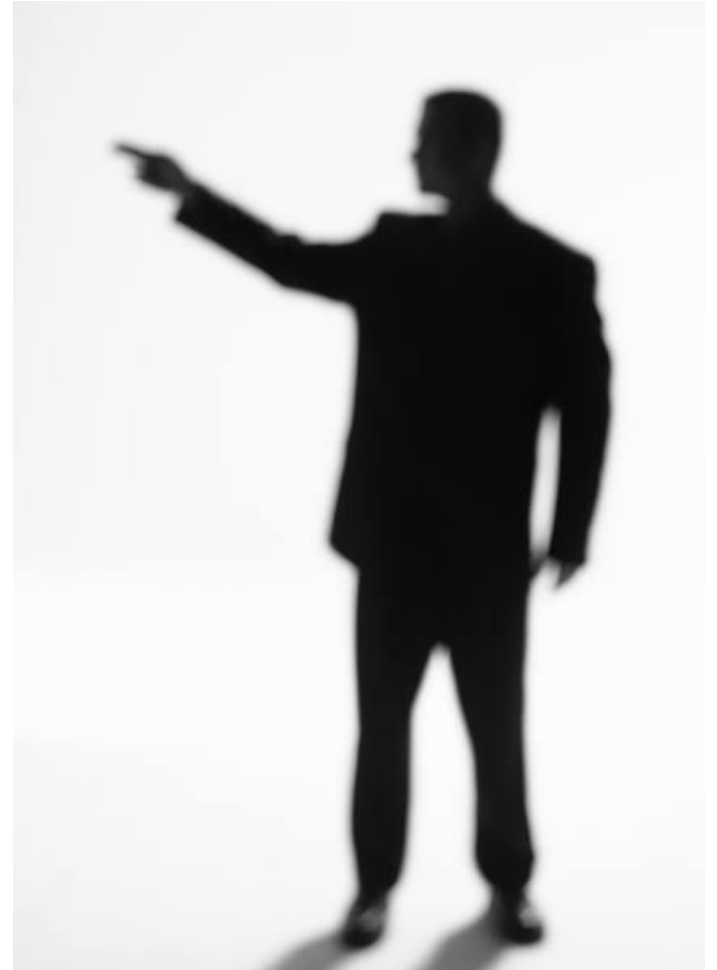


GPO and Folder Redirection

July 31, 2012

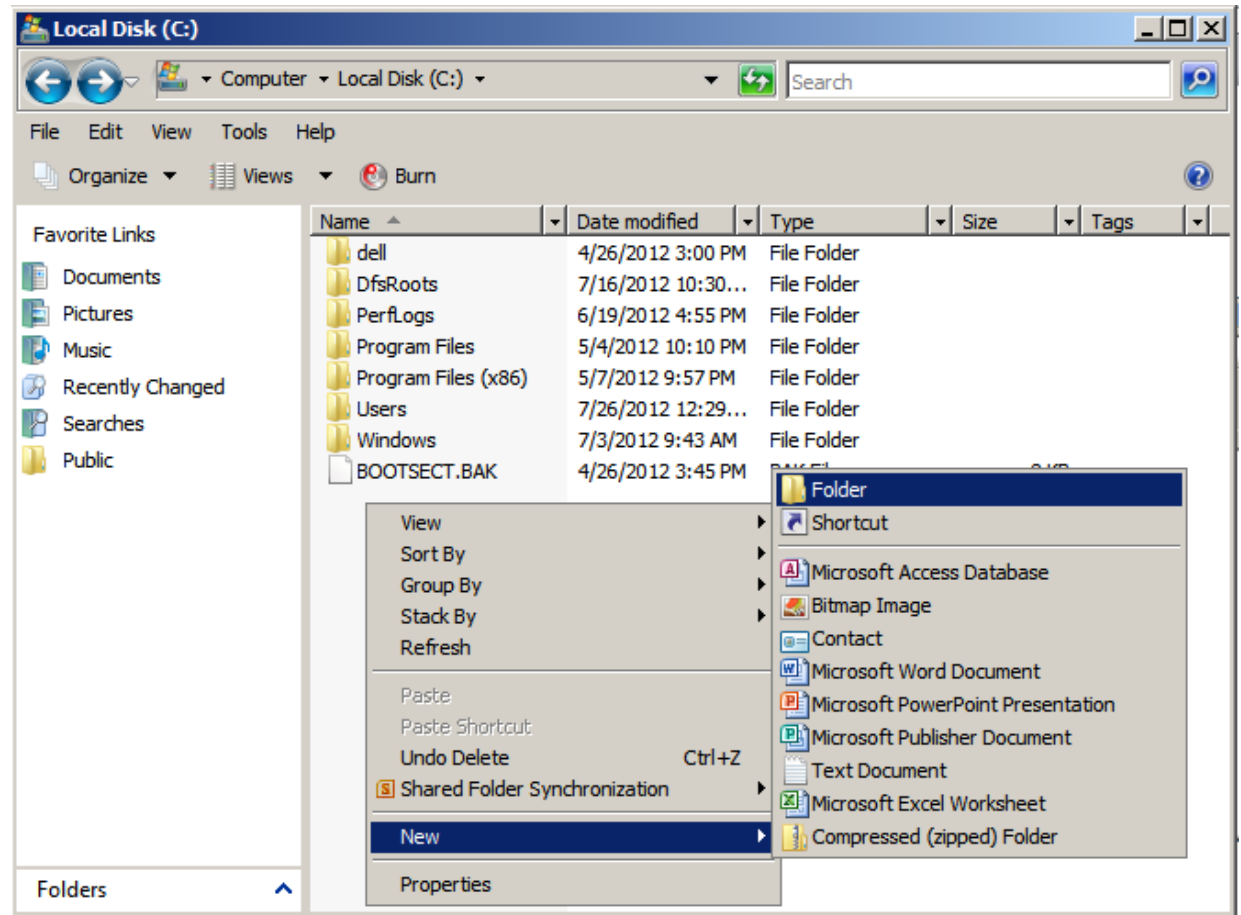
Modifying Client Server Operations

In this lesson, we will learn to modify client server operations using a group policy. We will first create a folder for the software department and then we will set the shares for the folder. Then finally, we will redirect our Documents folder on the client computer to the folder.



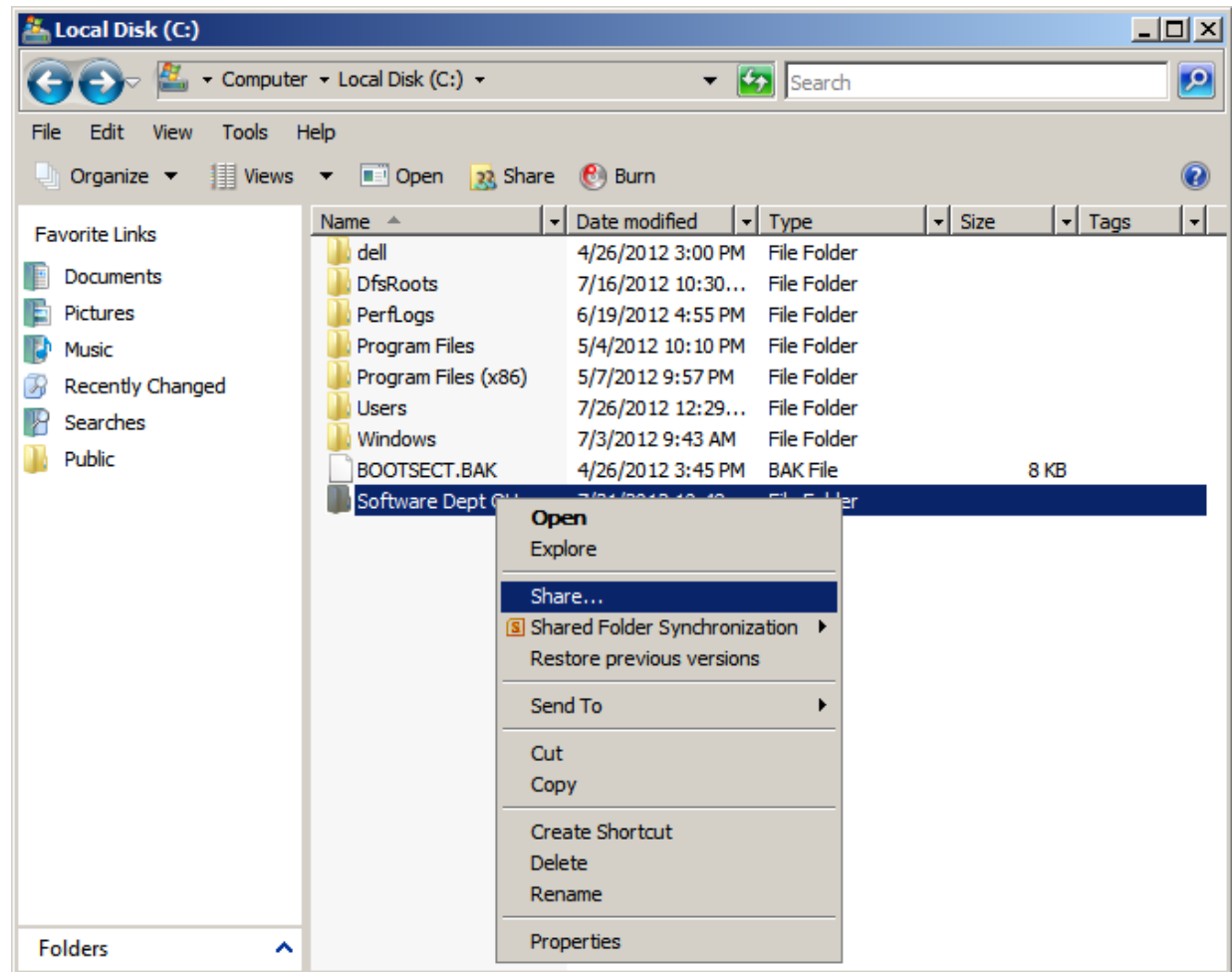
Create a New Folder

We can open the C: volume or local disk dialog box in Windows 2008 server and create a new folder by right clicking in the right pane, select New and Folder from the menu.



Name the New Folder

We will name our new folder Software Dept OU. We right click on the new folder and we choose Share from the menu.

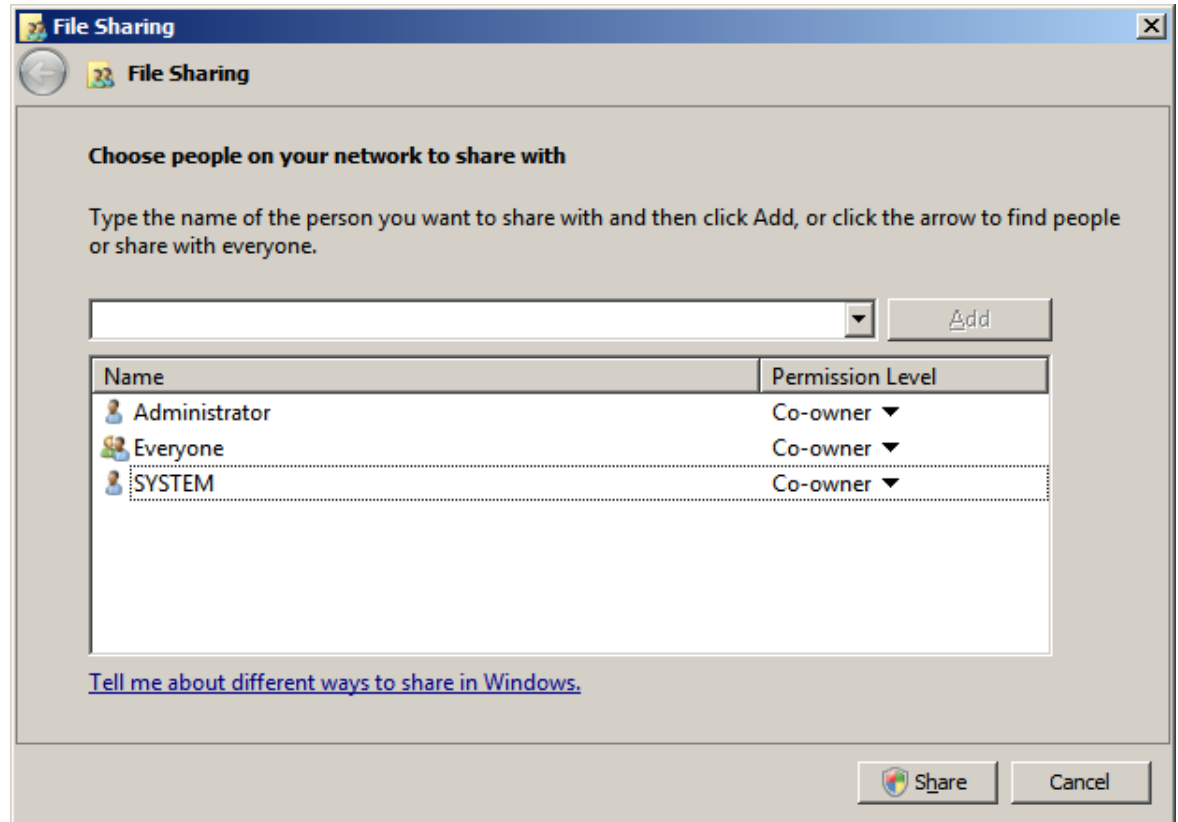


Add People to Share the File

We have the following accounts who can share the information in the folder.

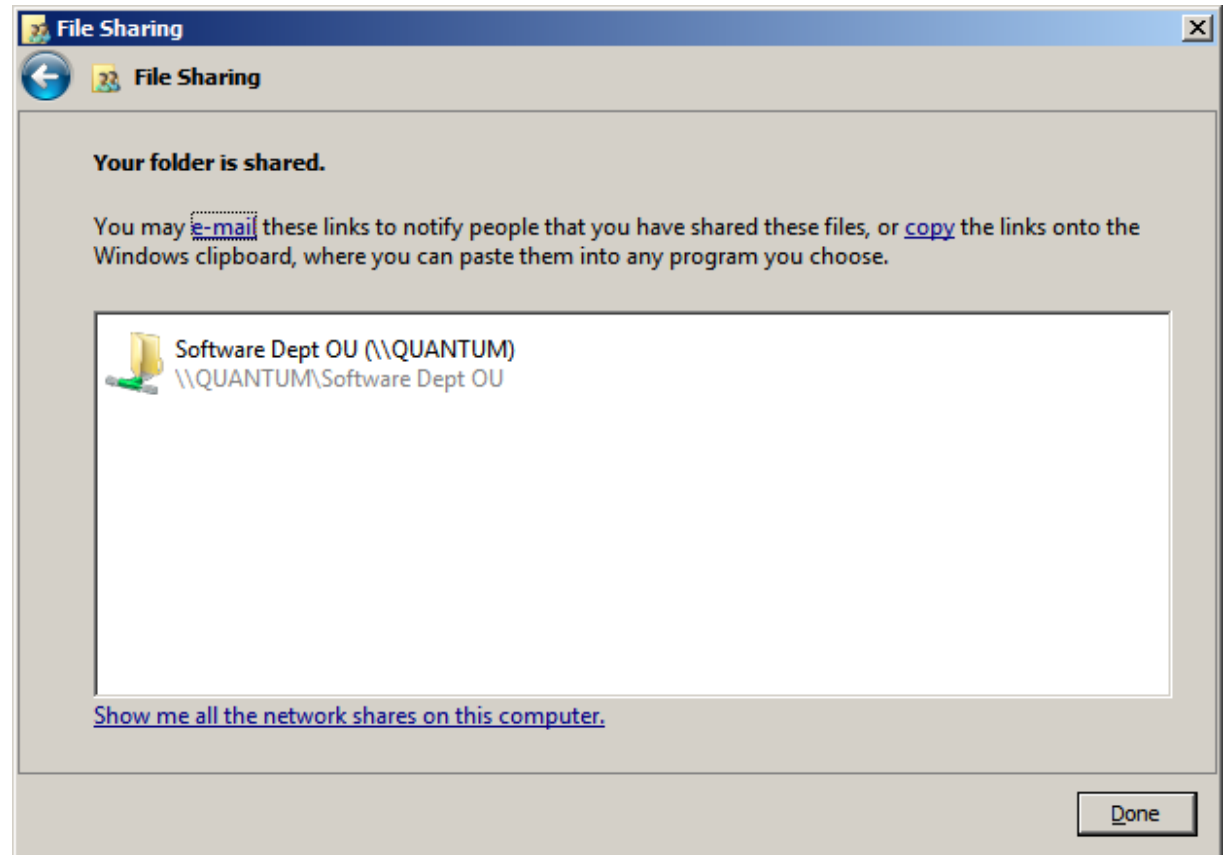
Administrator Co-owner
Everyone Co-owner
System Co-owner

Then we press the Share button to make the names and permission levels permanent.



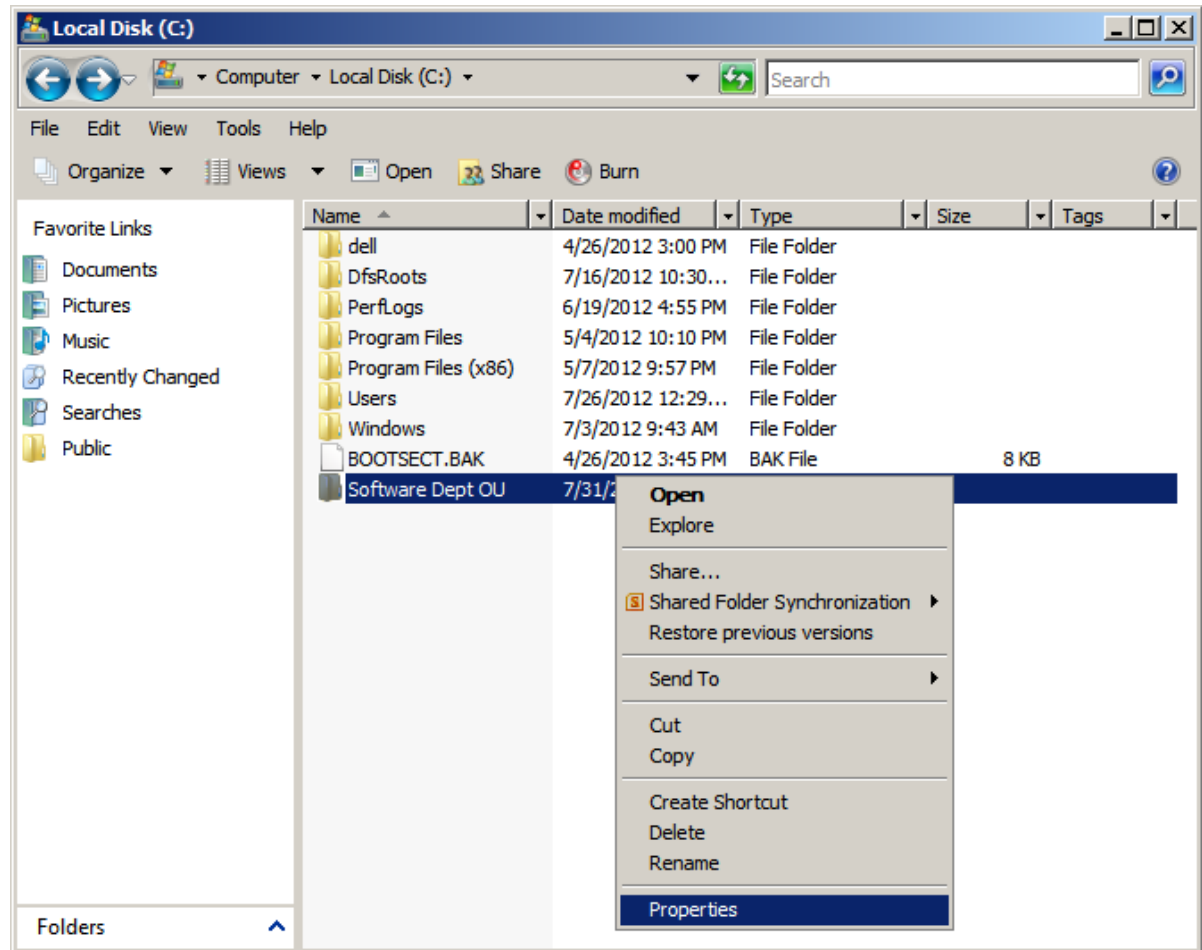
File Sharing

We can see that our folder is now shared and we press the Done button to close the window.



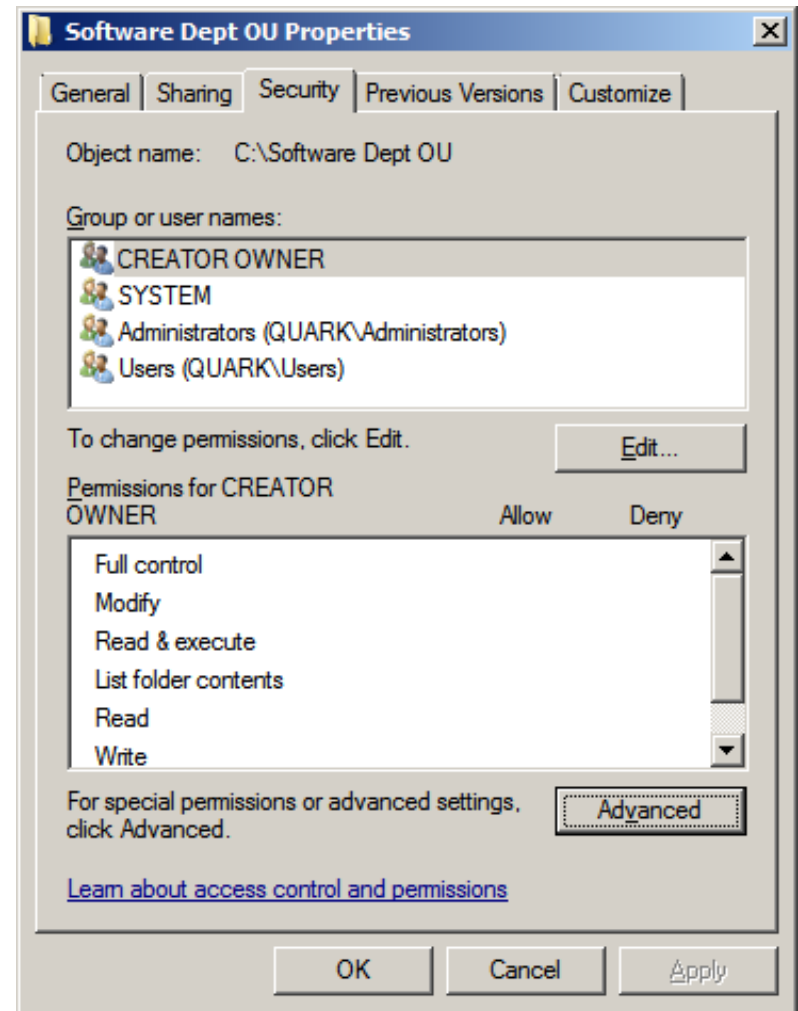
Shared Folder Properties

Right click on the shared folder and we select Properties from the menu.



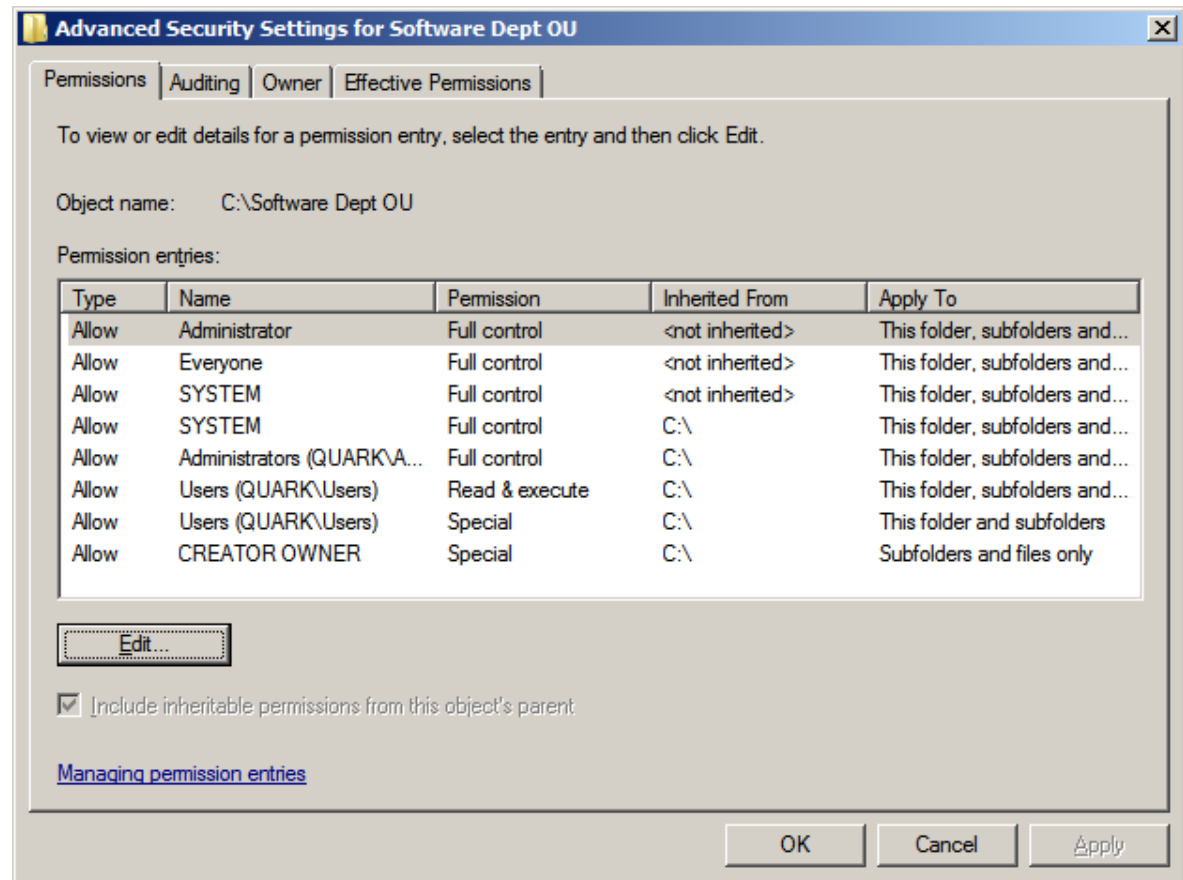
Shared Folder Properties – Security Tab

We then select the Advanced button.



Advanced Security Settings

We now pick the Edit button.



Windows Security

We do not annotate the include inheritance permissions checkbox.

The screenshot shows the 'Advanced Security Settings for Software Dept OU' window. The 'Permissions' tab is active, displaying a table of permission entries for the object 'C:\Software Dept OU'. Below the table are buttons for 'Add...', 'Edit...', and 'Remove'. At the bottom, there are checkboxes for 'Include inheritable permissions' (checked) and 'Replace all existing inheritable permissions' (unchecked). A 'Managing permission entries' link is also present.

| Type | Name | Permission | Inherited From | Apply To |
|-------|----------------------------|----------------|-----------------|-----------------------------|
| Allow | Administrator | Full control | <not inherited> | This folder, subfolders a.. |
| Allow | Everyone | Full control | <not inherited> | This folder, subfolders a.. |
| Allow | SYSTEM | Full control | <not inherited> | This folder, subfolders a.. |
| Allow | SYSTEM | Full control | C:\ | This folder, subfolders a.. |
| Allow | Administrators (QUARK)\... | Full control | C:\ | This folder, subfolders a.. |
| Allow | Users (OUARK\Users) | Read & execute | C:\ | This folder, subfolders a.. |

Include inheritable permissions
 Replace all existing inheritable permissions

[Managing permission entries](#)

Windows Security

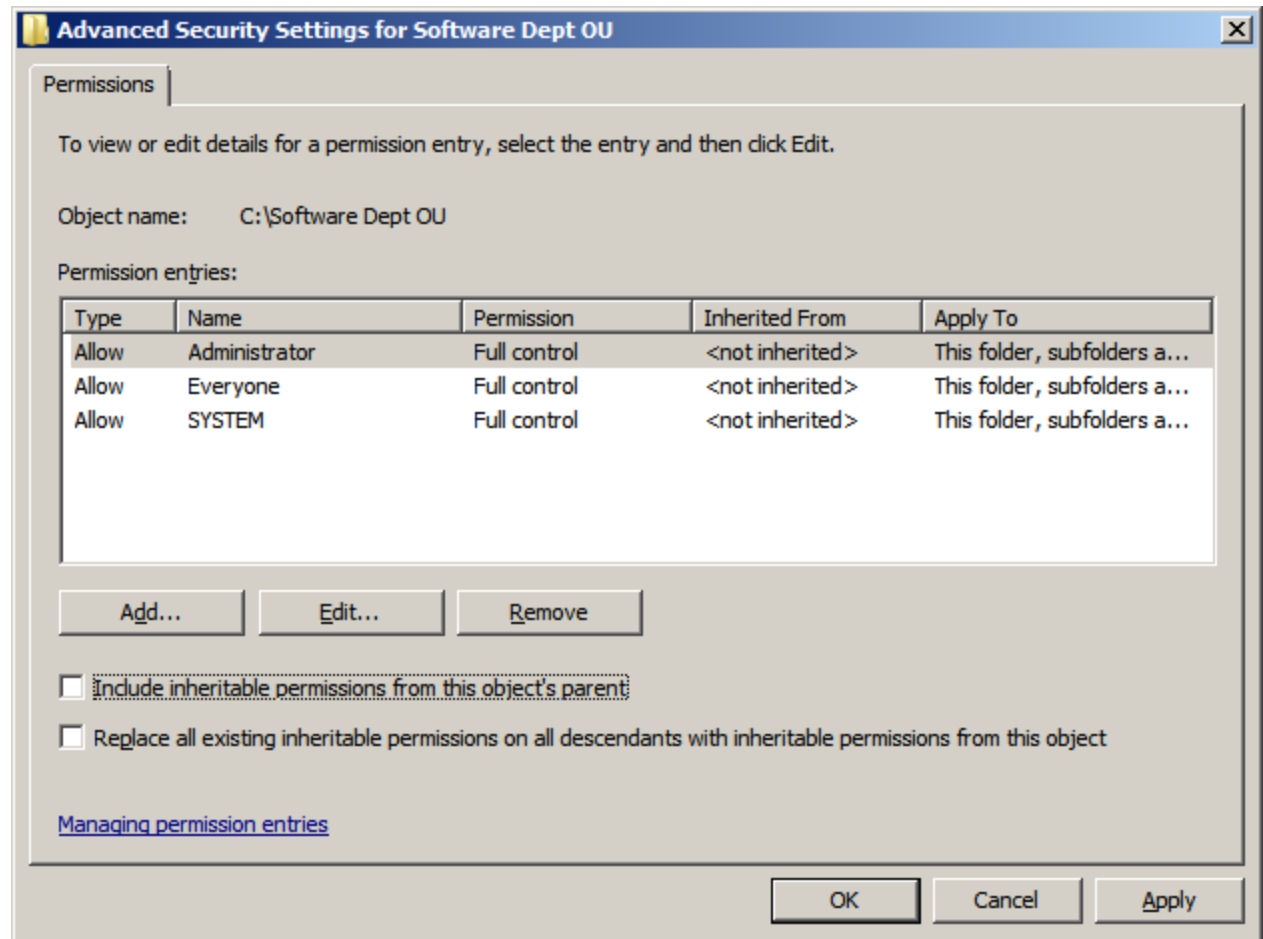
Selecting this option means that the parent permission entries that apply to child objects will no longer be applied to this object.

- To copy the permission entries that were previously applied from the parent to this object, click Copy.
- To remove the permission entries that were previously applied from the parent and keep only those permissions explicitly defined here, click Remove.
- To cancel this action, click Cancel.

Copy Remove Cancel

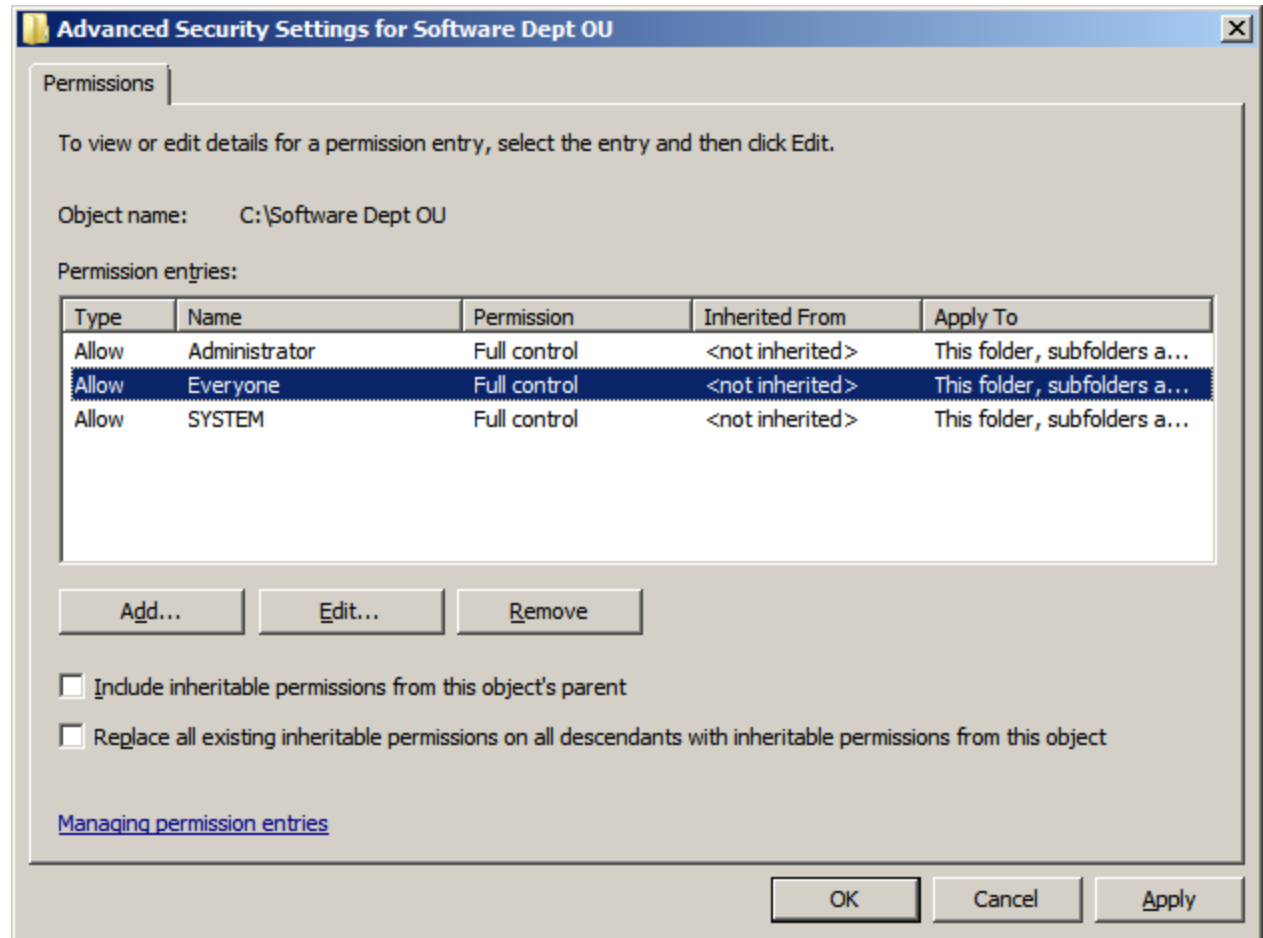
Advanced Security Settings - Administrator

The Administrator has full control.



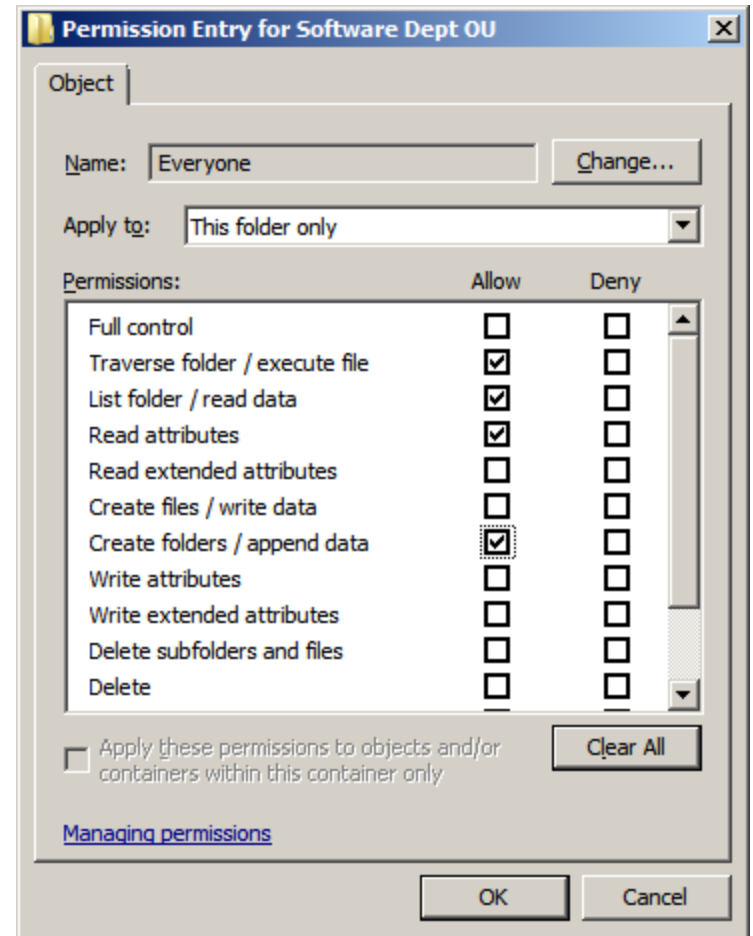
Advanced Security Settings - Everyone

We then select the Everyone account and choose the Edit button.



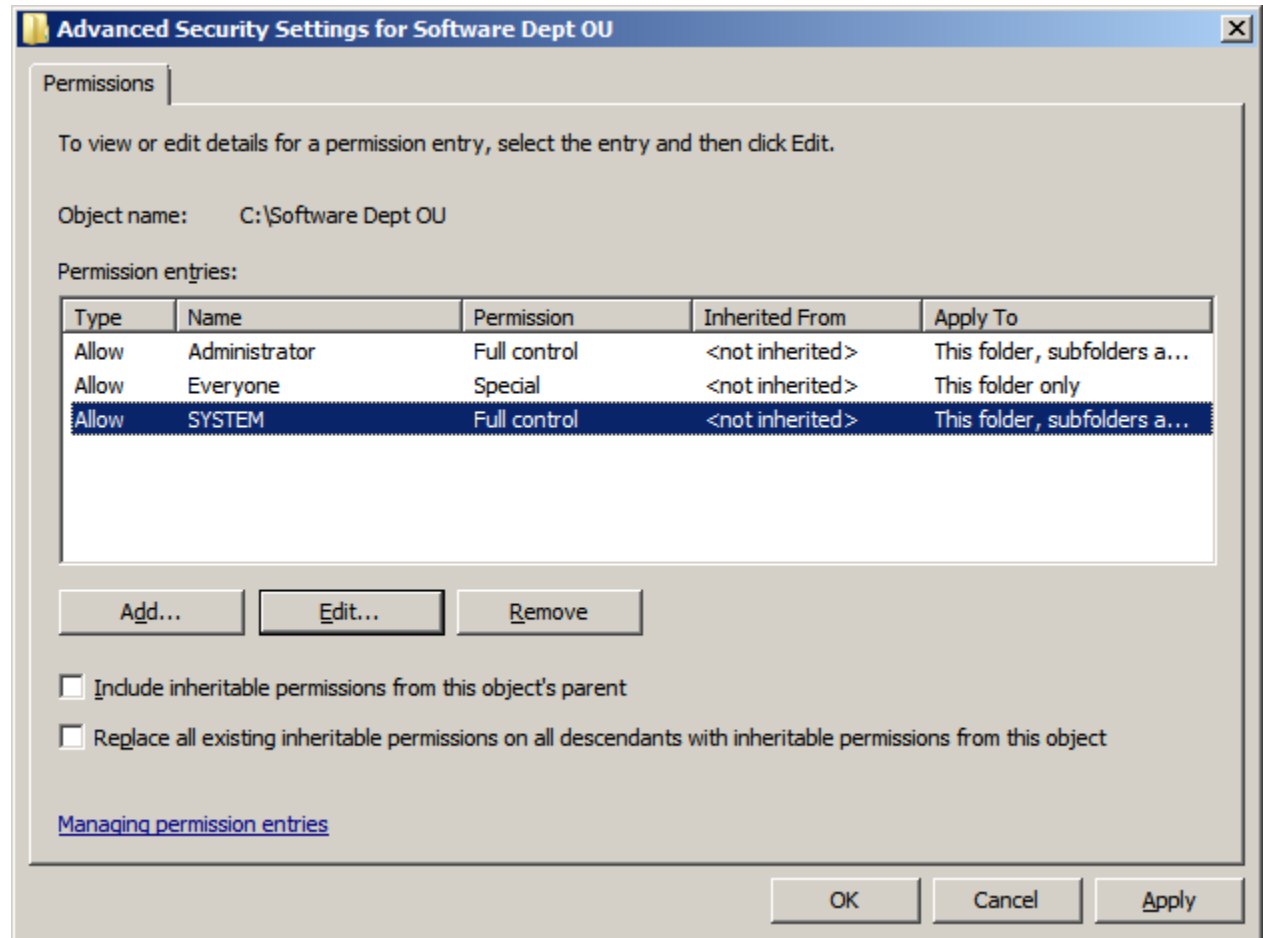
Permissions Entry - Everyone

On the Permission Entry window for Everyone, we allow Traverse folder / execute file, List folder / read data, Read attributes and Create folders / append data.



Advanced Security Settings - System

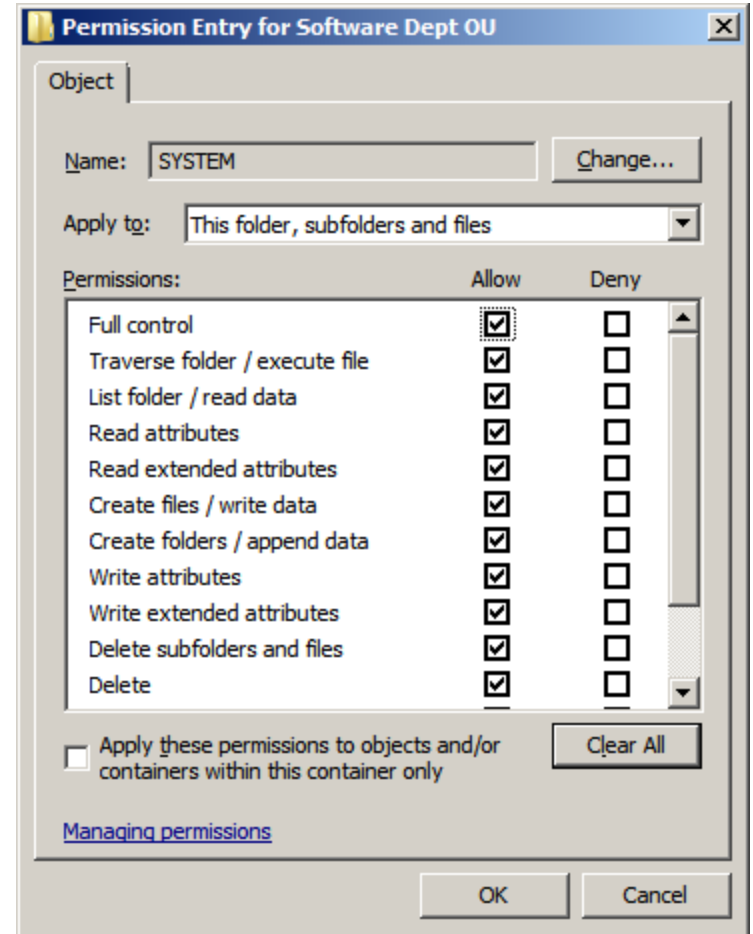
We then select the System account and choose the Edit button.



Permissions Entry - System

On the Permission Entry window for System, we allow everything.

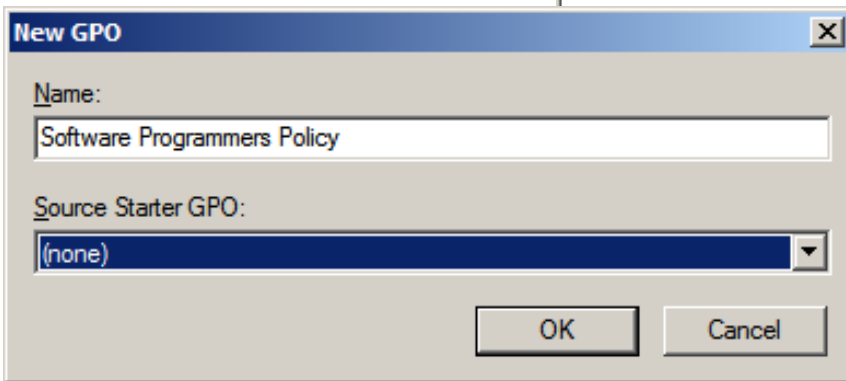
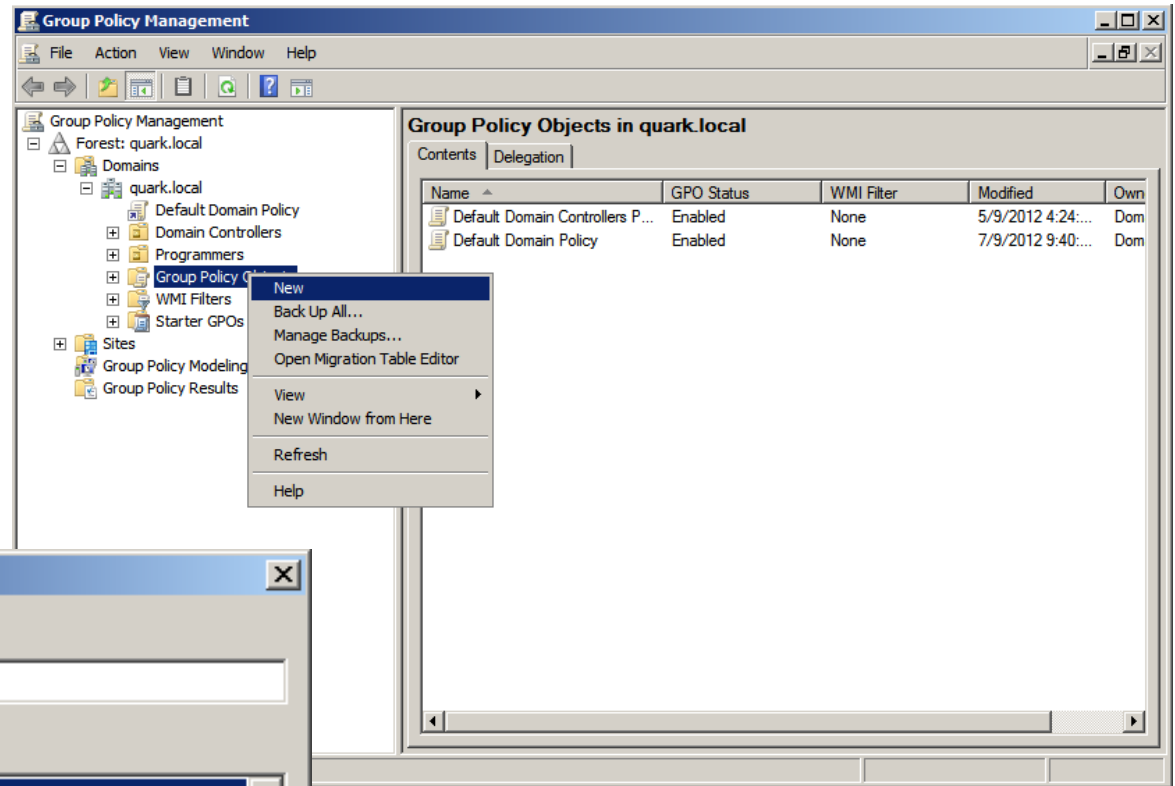
At this point, we are done with editing the permissions and we can close the dialog box and the Advanced Security Settings window.



Group Policy Management Console

Visit Administrative Tools and open the Group Policy Management Console.

Open the domain and right click on Group Policy Object and select New from the menu.

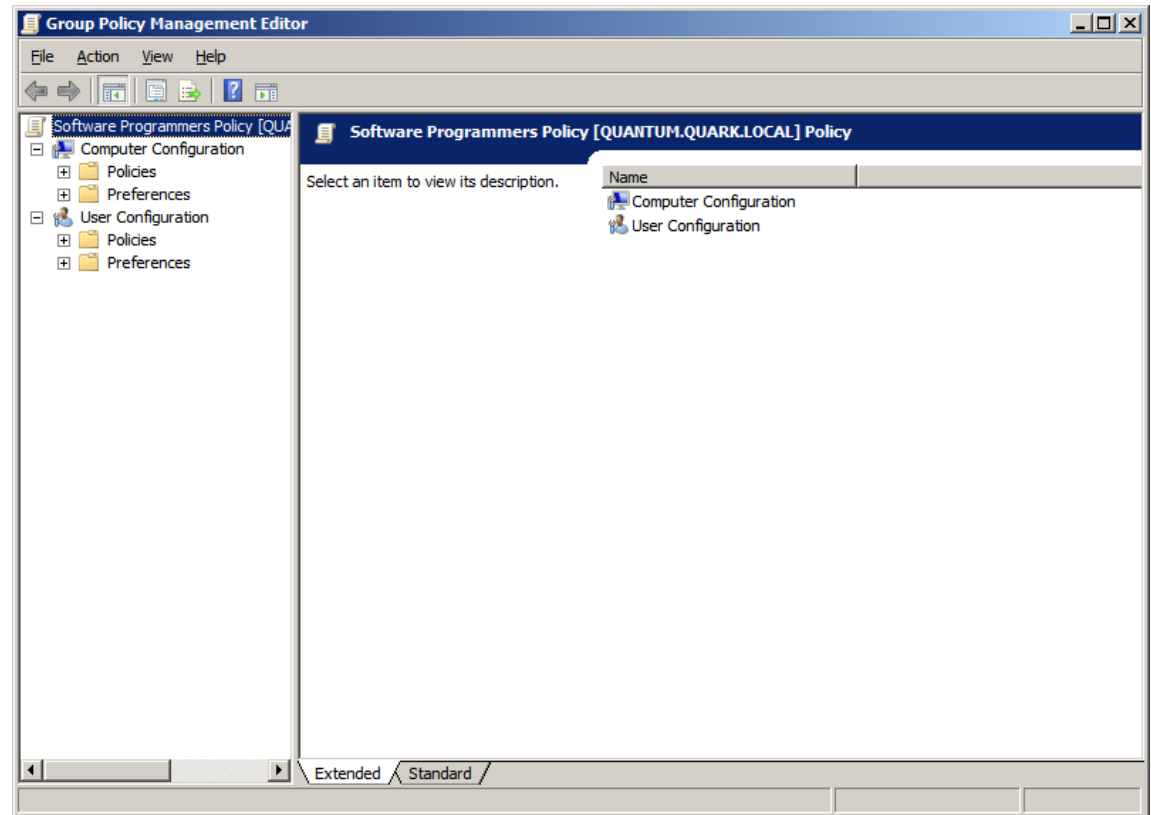


We create a new GPO called Software Programmers Policy and press OK

Group Policy Management Editor

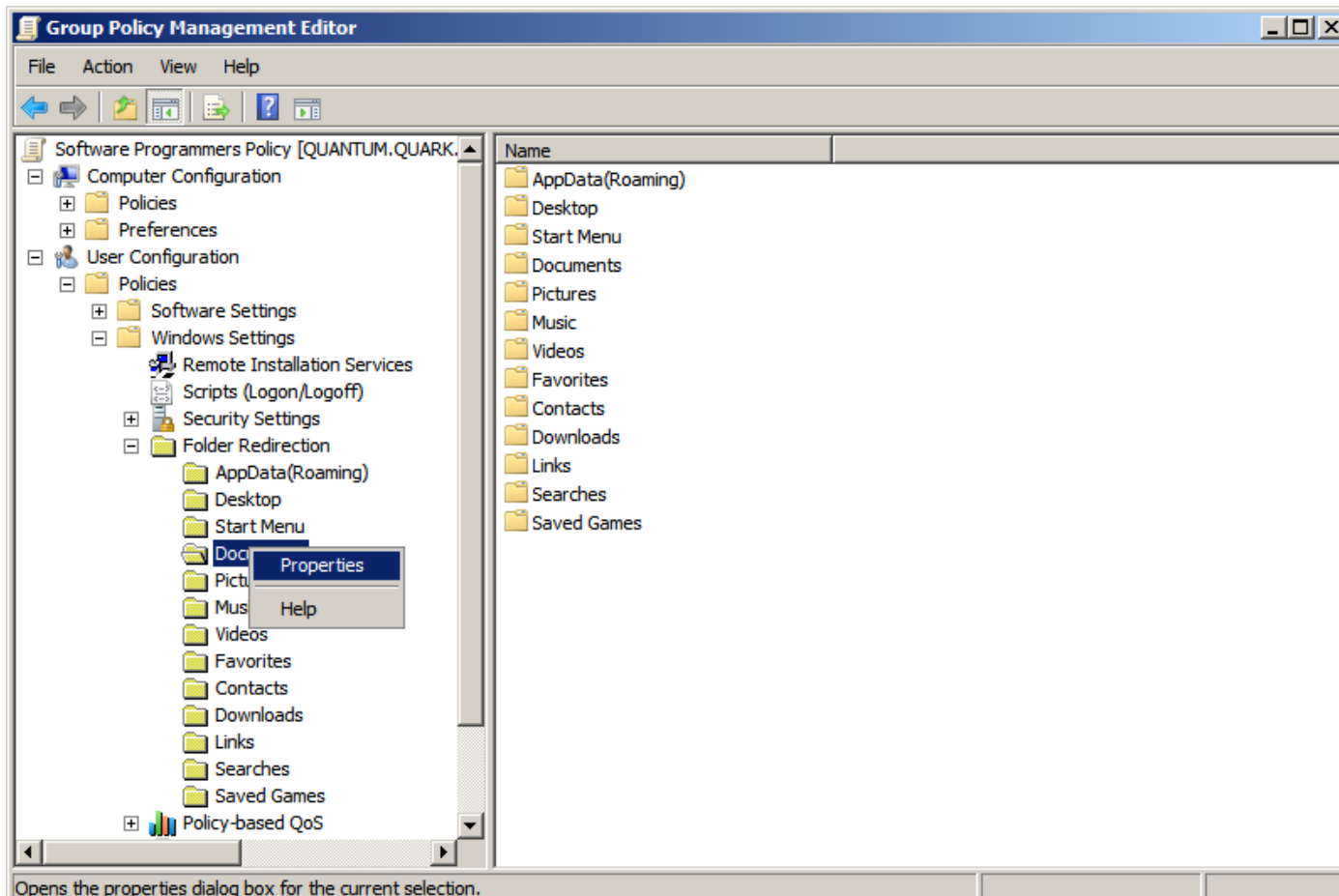
We right click on the domain and select Edit from the menu.

Then in the Group Policy Management Editor, we click on User Configuration.



Folder Redirection

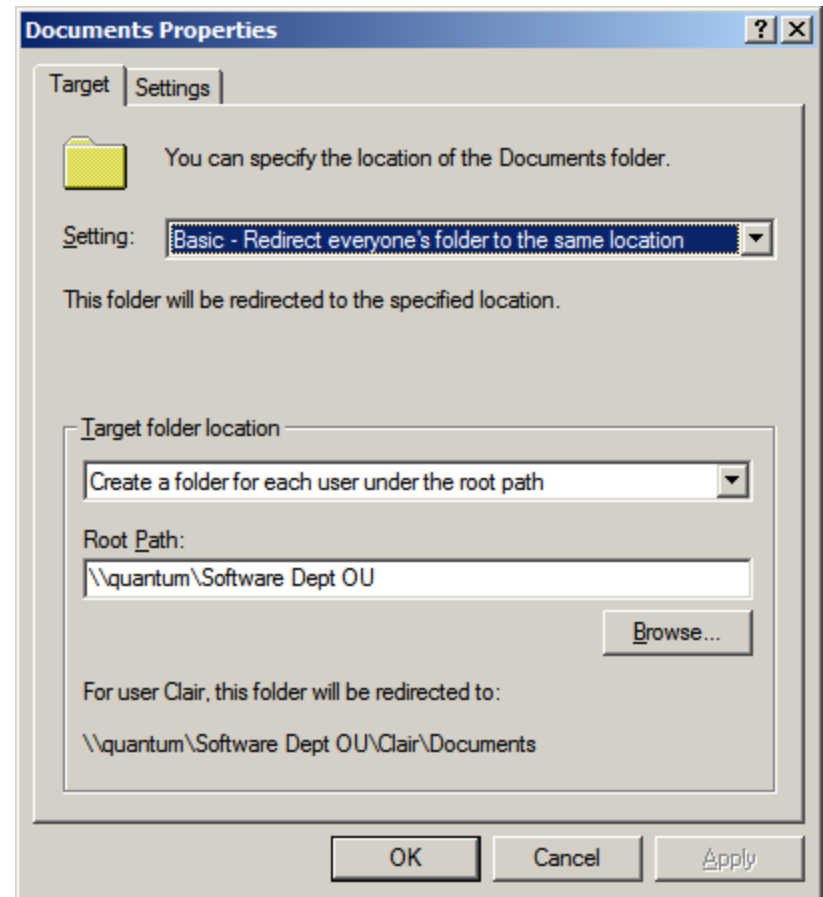
In User Configuration, we open the Policies folder, then Windows Settings, and finally Folder Redirection. We right click on Documents and select Properties from the menu.



Documents Properties – Target Tab

In the Target tab , we can choose multiple settings and we will pick “Basic – Redirect everyone's folder to the same location”.

Next, will use “Create a folder for each user under the root path” and we will type the root path to the folder we just made for the Software Dept.



Documents Properties – Settings Tab

We then should click on the Settings tab and uncheck the box for “Grant the user exclusive rights to Documents”.

We click on the Apply button and close the Group Policy Management Editor Console.

When a person places files in their document folder, those objects will be redirected to the folder on the server.

