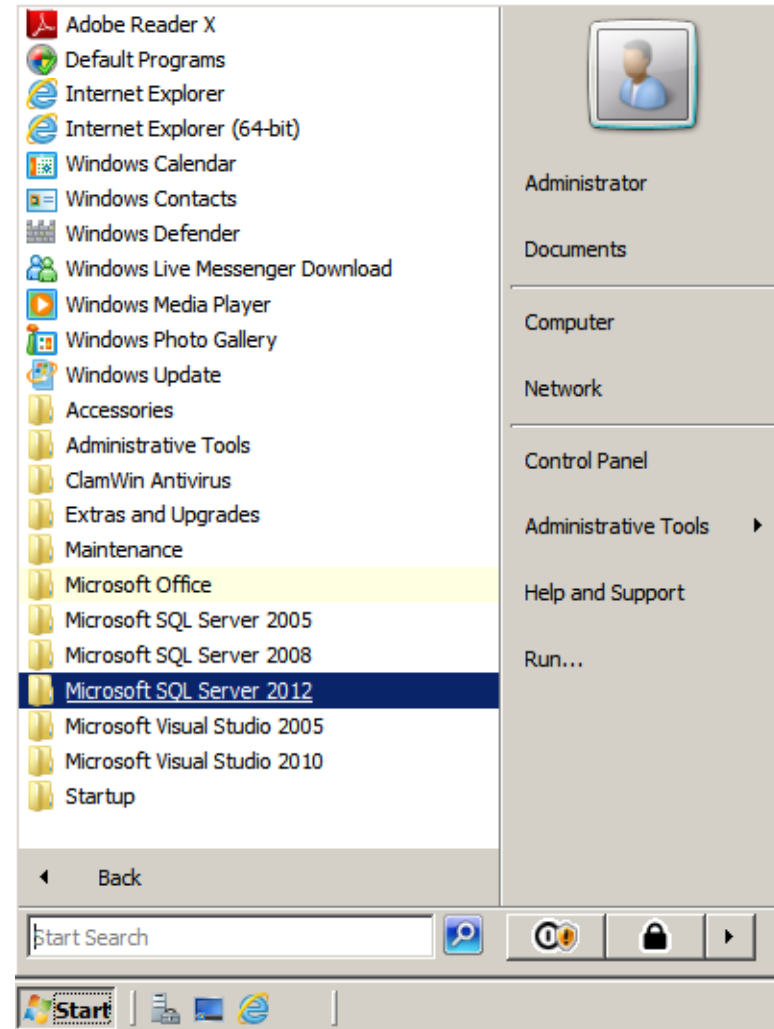


Building a SQL Database

August 16, 2012

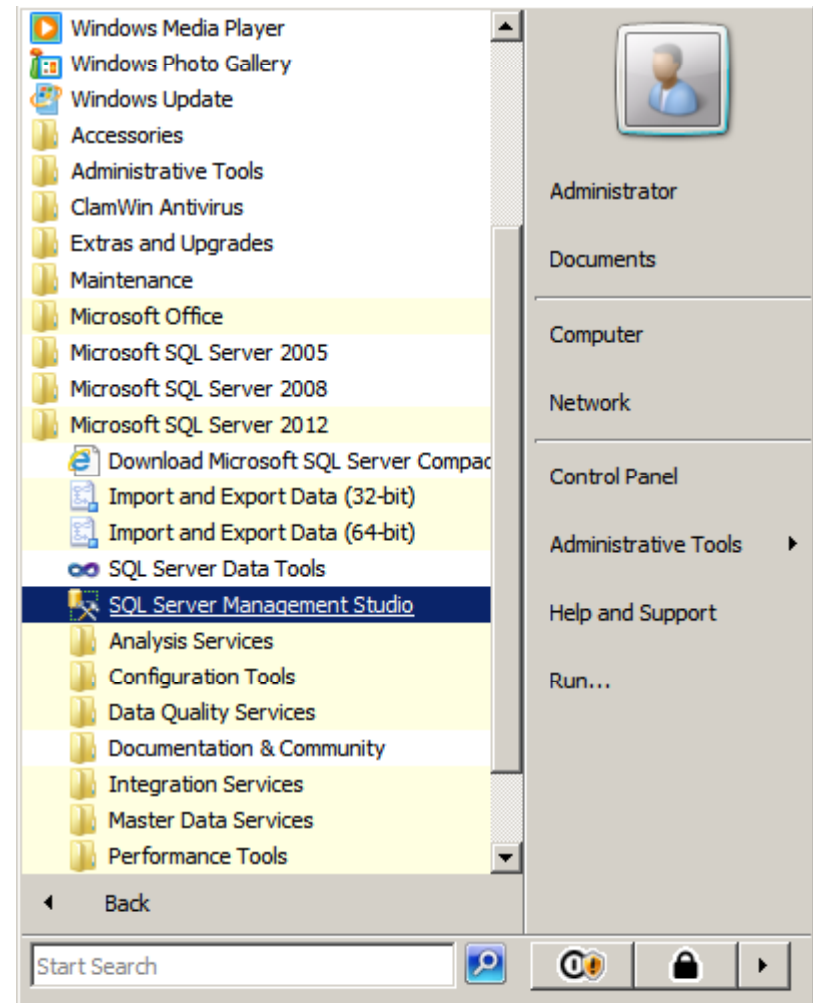
Launch Microsoft SQL Server 2012

On our SQL Server, we have the 2005, 2008 and 2012 version. We select the Microsoft SQL Server 2012.



SQL Server Management Studio

We expand the Microsoft SQL Server 2012 folder and we click the SQL Server Management Studio to open the program.



Connect to Server

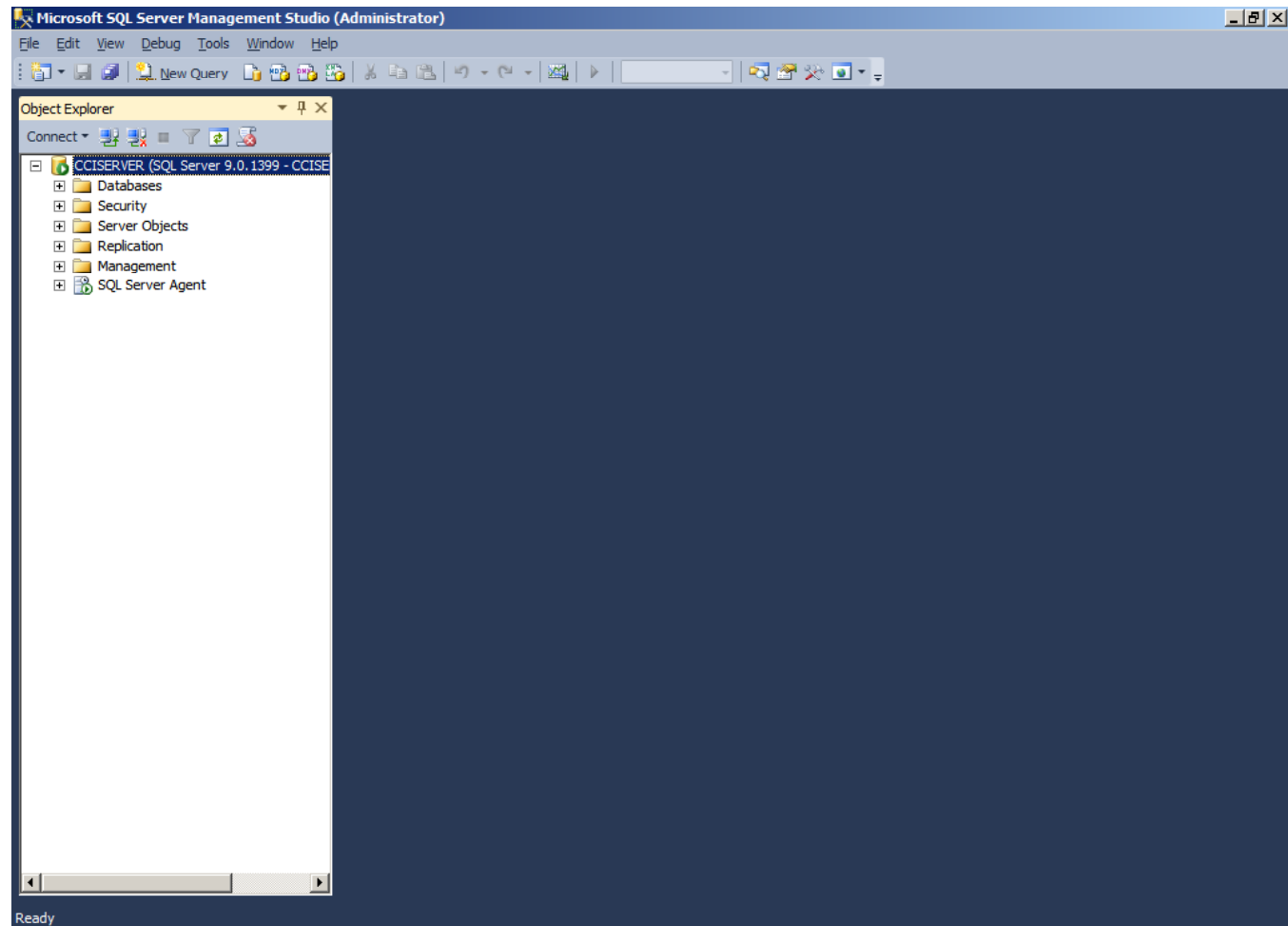
We make sure our server name is correct and we choose the Connect button.



SQL Server Management Studio

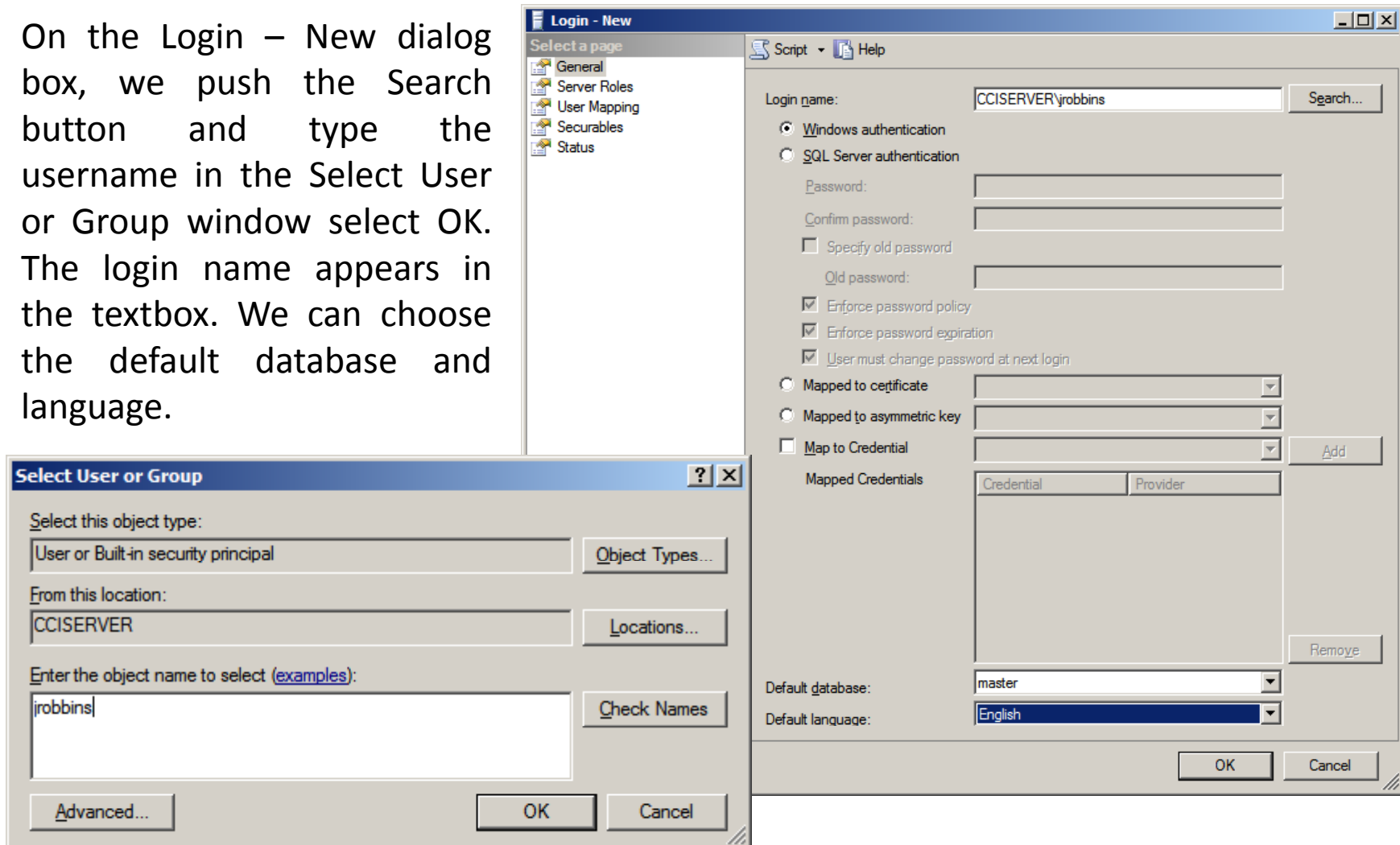
The SQL Server Management Studio window will open.

Expand the Security folder and right click on the Login folder. Select New login from the menu.



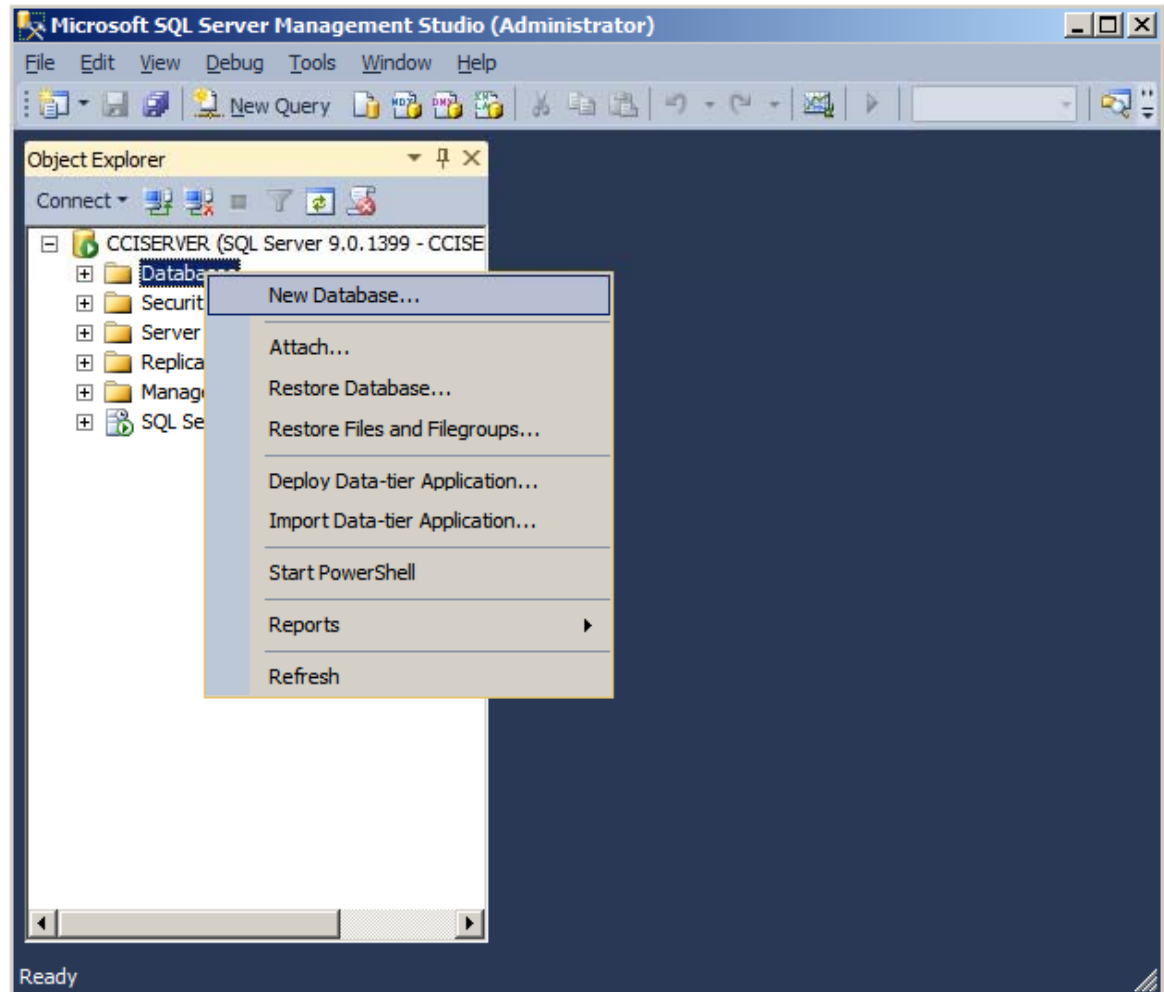
Login – New Window

On the Login – New dialog box, we push the Search button and type the username in the Select User or Group window select OK. The login name appears in the textbox. We can choose the default database and language.



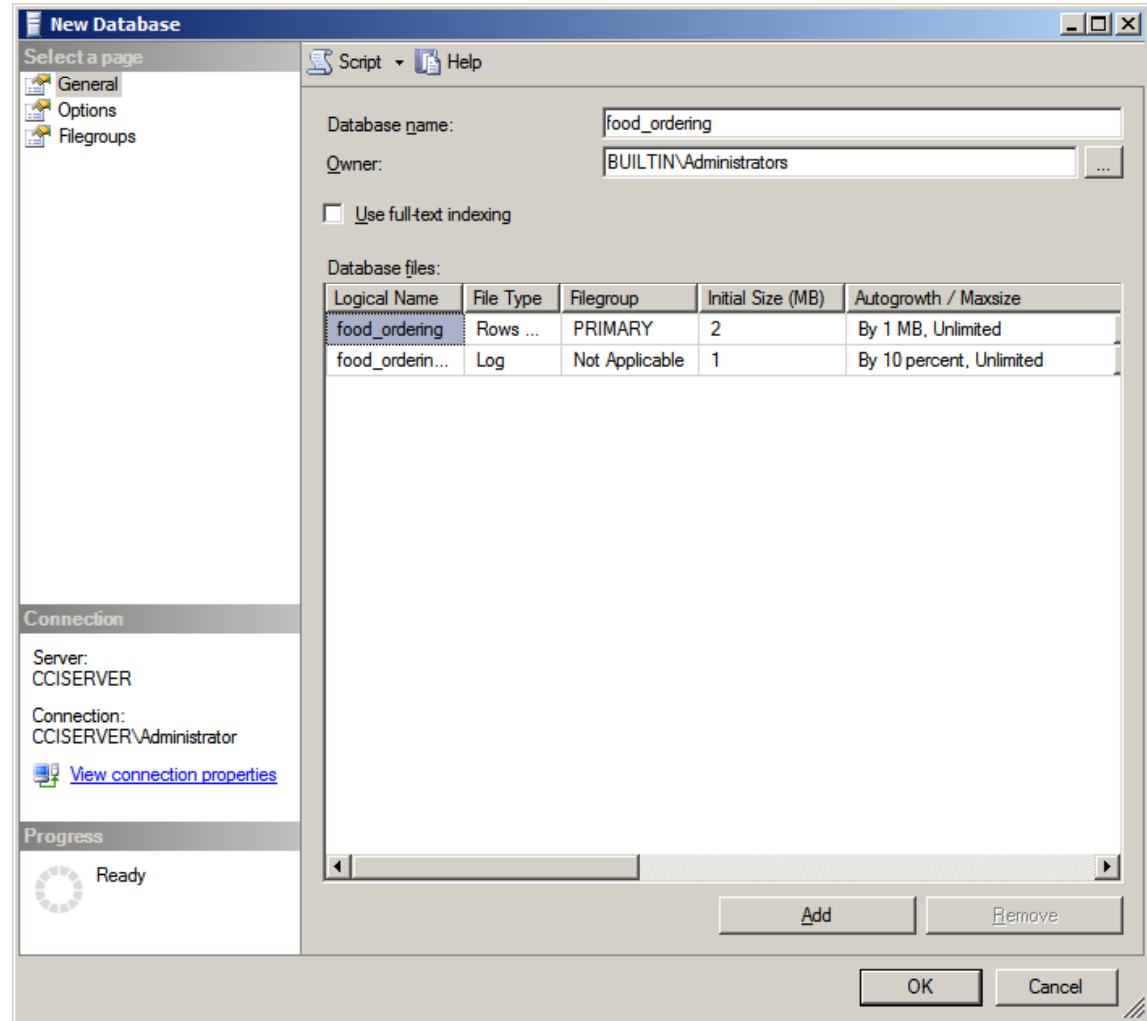
Create a New Database

To create a new database, we right click on Database in the left pane and we select New Database from the menu.



New Database Window

We type the name of the database and we assign the owner. We will use our username.



Log Maximum File Size

On the food ordering log, we click on the three dotted icon as shown and change the Maximum File Size to 100 MB.

The image shows two overlapping dialog boxes from SQL Server Enterprise Manager. The background dialog is 'New Database' for a database named 'food_ordering'. It shows the 'Database files' table with two rows: 'food_ordering' (Rows) and 'food_orderin...' (Log). The log file's 'Autogrowth / Maxsize' is 'By 10 percent, Limited to 100'. A red circle highlights the three-dot icon in the 'Path' column for the log file. The foreground dialog is 'Change Autogrowth for food_ordering_log'. It has 'Enable Autogrowth' checked. Under 'File Growth', 'In Percent' is selected with a value of 10. Under 'Maximum File Size', 'Limited to (MB)' is selected with a value of 100. Both dialogs have 'OK' and 'Cancel' buttons.

Logical Name	File Type	Filegroup	Initial Size (MB)	Autogrowth / Maxsize	Path
food_ordering	Rows ...	PRIMARY	2	By 1 MB, Unlimited	C:\Prog
food_orderin...	Log	Not Applicable	1	By 10 percent, Limited to 100	C:\Prog

Food Ordering Database

In our next lesson, we will create the tables for our food ordering database.

