

Adding an Image to the RIS Image Drive

August 16, 2010

Add a Legacy Image to a RIS Server

On the server that is running the Windows Deployment Service, we click on Administrative Tools and choose the Windows Deployment Services Legacy to start the setup and configuration wizard.

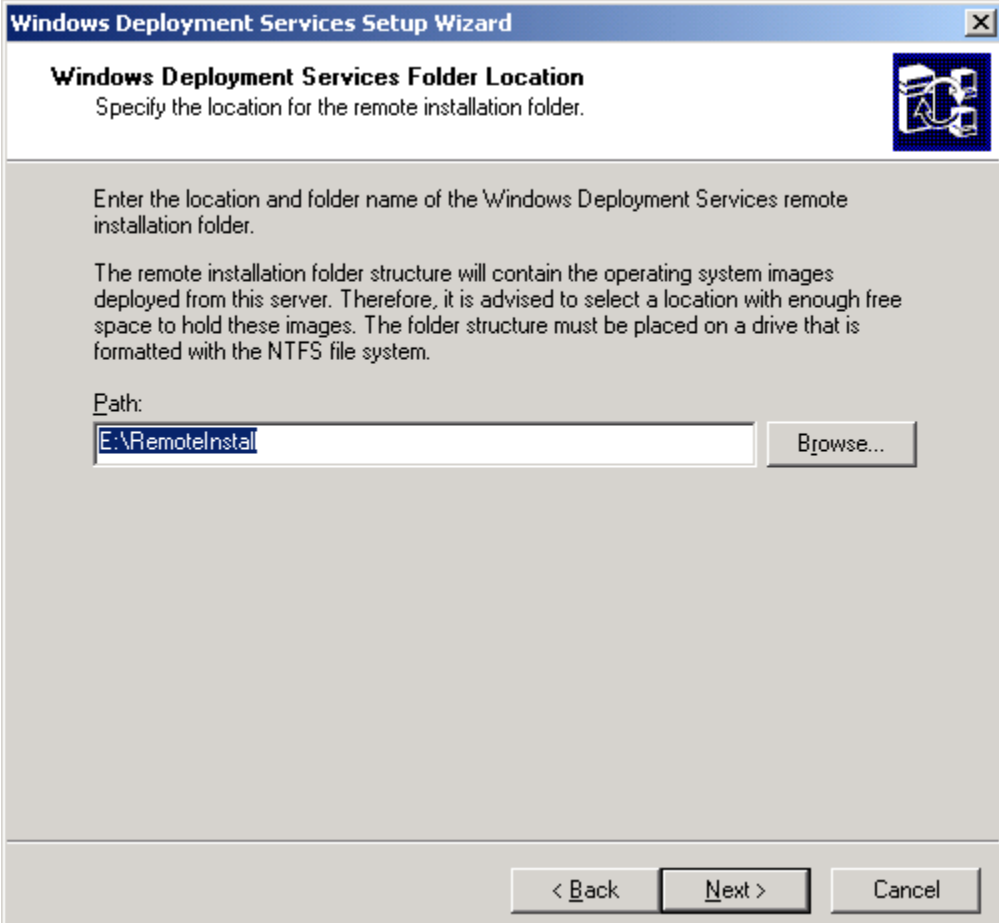
A RIS server is a member server of an Active Directory domain. We need to have a DHCP and DNS server on the network. We need have a Windows operating system disk and a client computer that can boot to the network.

Select the Next button to continue.



Remote Installation Folder Location

On our RIS server, the C drive contains the system volume and the D drive is the CDROM. The E drive is the second hard drive on the server and it will contain the legacy operating system images. Our path is E:\RemoteInstall. We will pick the Next button to advance.

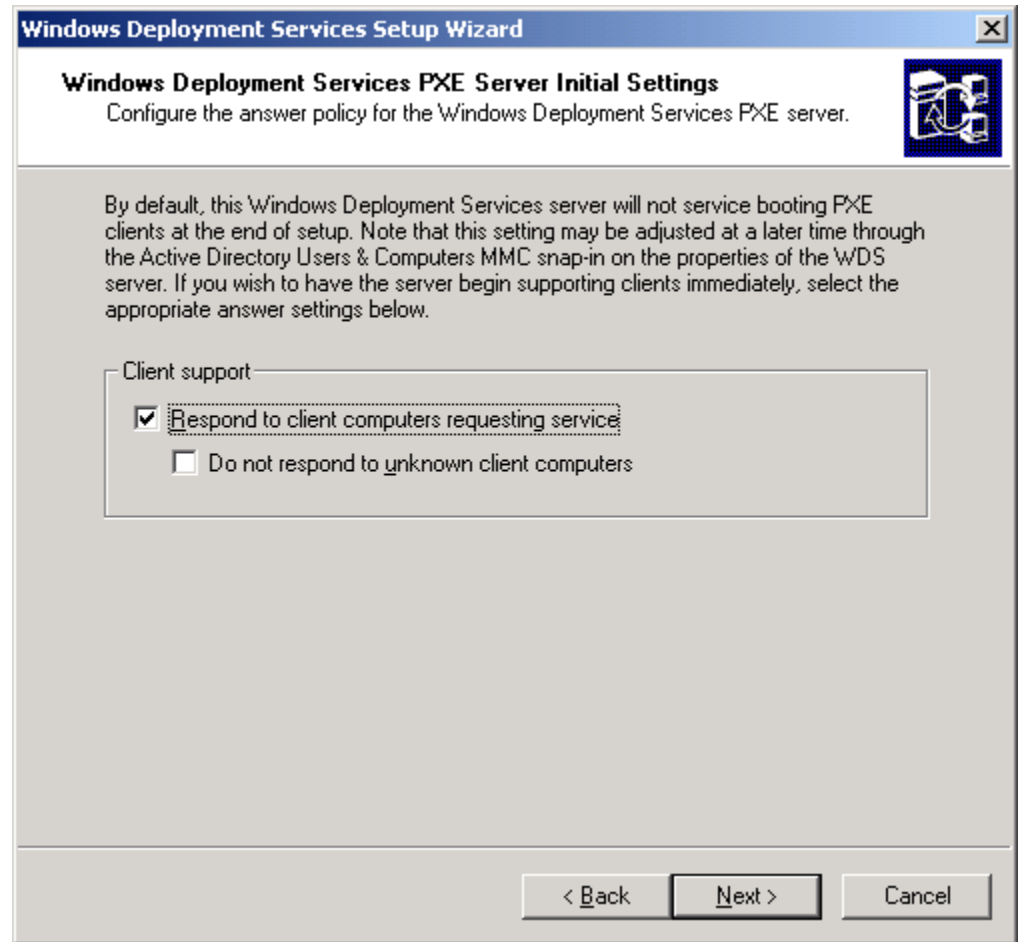


The screenshot shows a Windows XP-style dialog box titled "Windows Deployment Services Setup Wizard". The main heading is "Windows Deployment Services Folder Location" with a subtitle "Specify the location for the remote installation folder." Below this, there is instructional text: "Enter the location and folder name of the Windows Deployment Services remote installation folder." and "The remote installation folder structure will contain the operating system images deployed from this server. Therefore, it is advised to select a location with enough free space to hold these images. The folder structure must be placed on a drive that is formatted with the NTFS file system." A text input field labeled "Path:" contains the text "E:\RemoteInstal". To the right of the input field is a "Browse..." button. At the bottom of the dialog are three buttons: "< Back", "Next >", and "Cancel".

PXE Server Initial Settings

We will annotate the respond to client computers requesting services checkbox.

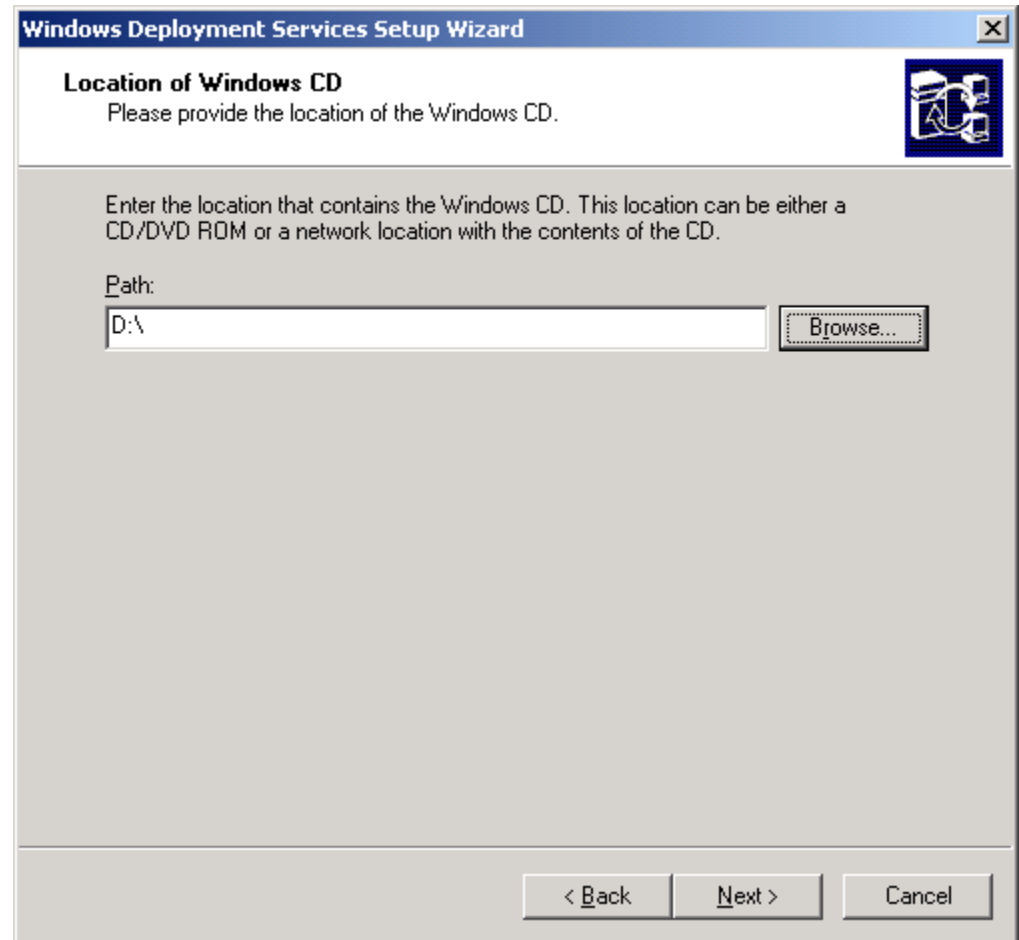
We press the Next button to go on.



Location of the Windows CD

We will place the Windows operating system CD in the D drive (CDROM), so we respond with D:\ in the path textbox.

We opt for the Next button to carry on.



Folder Name

Our first image we will load is the Windows XP Professional operating system. Presently, this software is the most common operating system used. We will also load Vista and any other operating system on the server. We type WINDOWS_XP_PRO as the folder name and pick the Next button to continue.

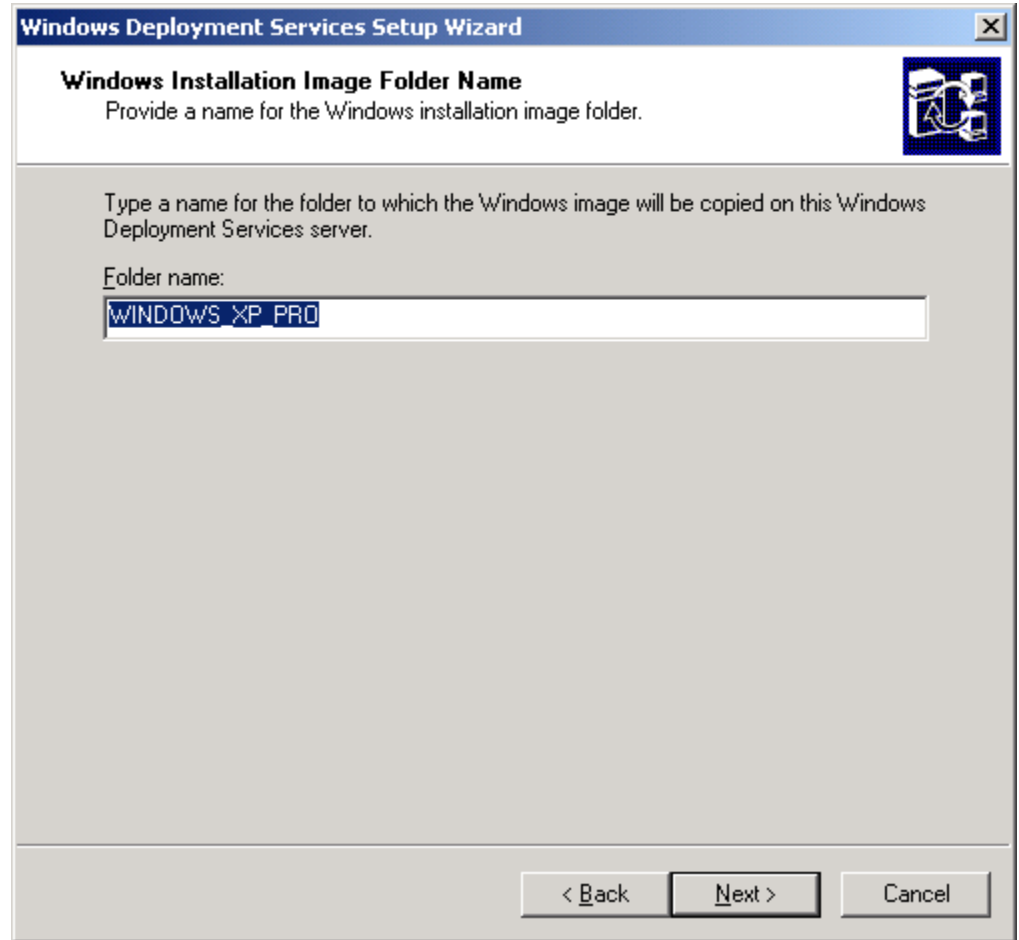
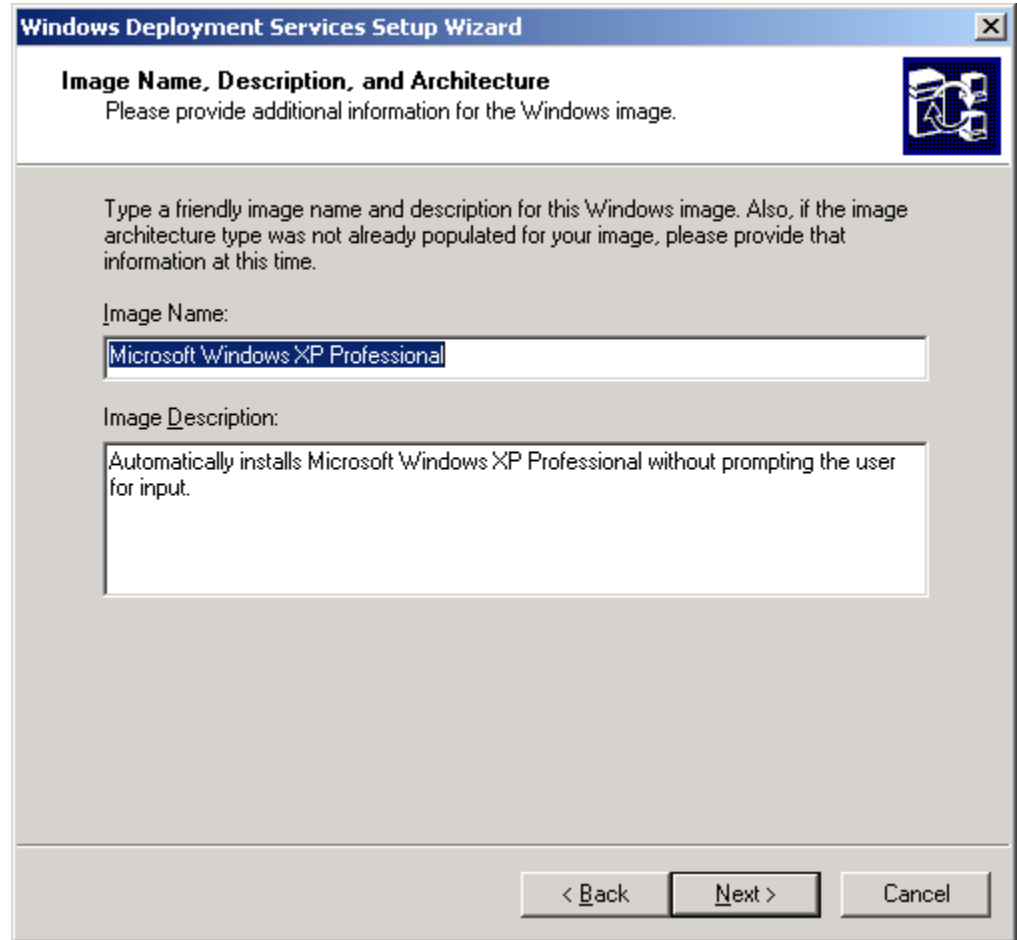


Image Name and Description

We type an image name that can be seen by the individual loading the client computer over the network when the machine is booted over the network. We can add a description that contains more details. We choose the Next button to go on.



The screenshot shows a Windows Deployment Services Setup Wizard dialog box. The title bar reads "Windows Deployment Services Setup Wizard". The main heading is "Image Name, Description, and Architecture". Below the heading, it says "Please provide additional information for the Windows image." There is a small icon of a computer with a network card in the top right corner. The main text area contains the instruction: "Type a friendly image name and description for this Windows image. Also, if the image architecture type was not already populated for your image, please provide that information at this time." Below this, there are two input fields. The first is labeled "Image Name:" and contains the text "Microsoft Windows XP Professional". The second is labeled "Image Description:" and contains the text "Automatically installs Microsoft Windows XP Professional without prompting the user for input." At the bottom of the dialog, there are three buttons: "< Back", "Next >", and "Cancel".

Windows Deployment Services Setup Wizard

Image Name, Description, and Architecture
Please provide additional information for the Windows image.

Type a friendly image name and description for this Windows image. Also, if the image architecture type was not already populated for your image, please provide that information at this time.

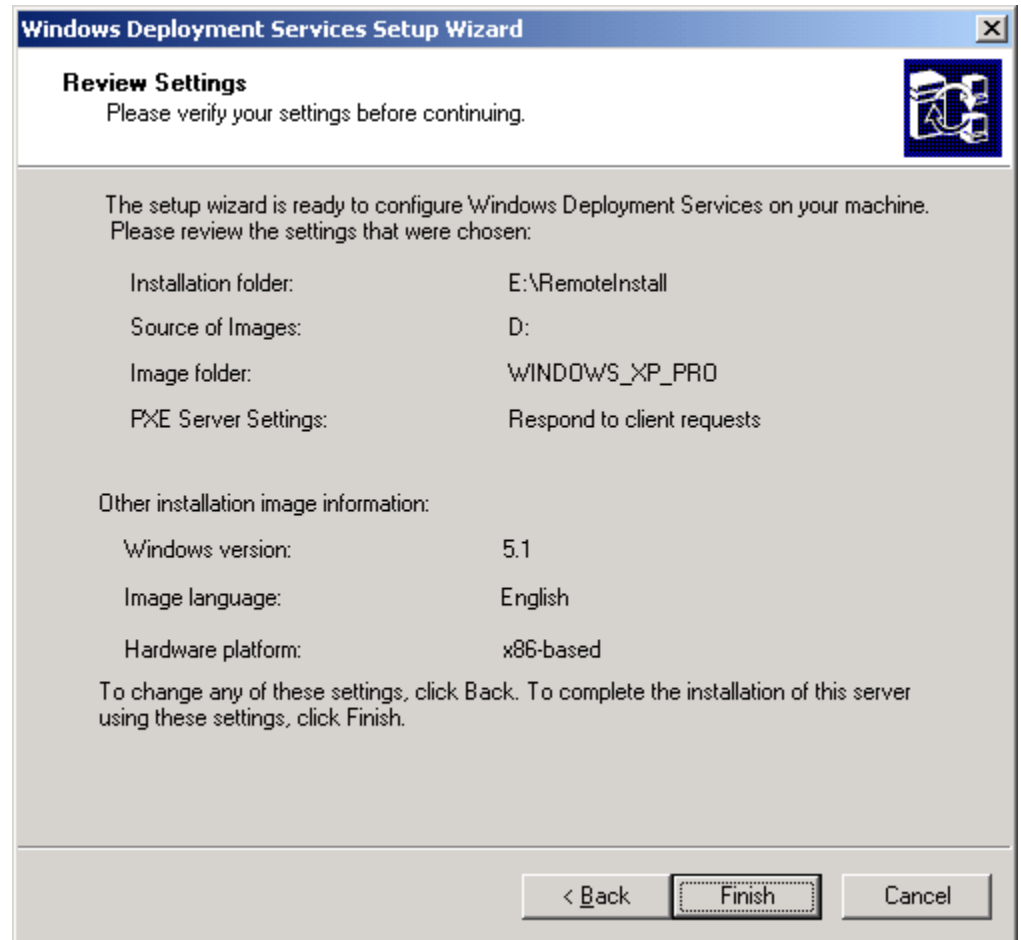
Image Name:
Microsoft Windows XP Professional

Image Description:
Automatically installs Microsoft Windows XP Professional without prompting the user for input.

< Back Next > Cancel

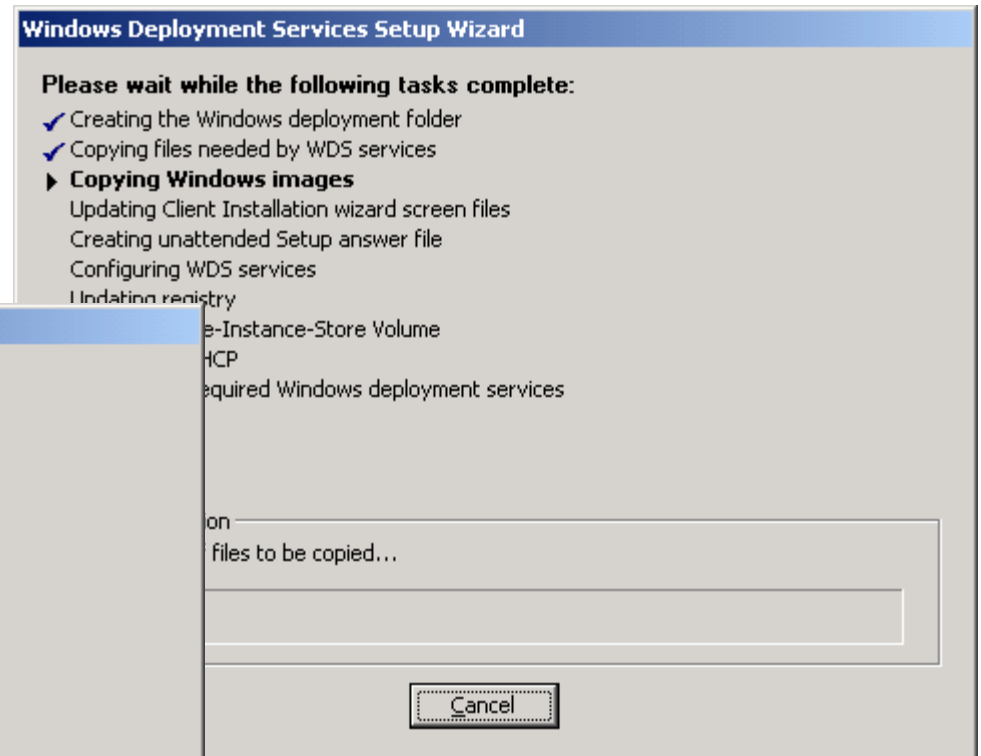
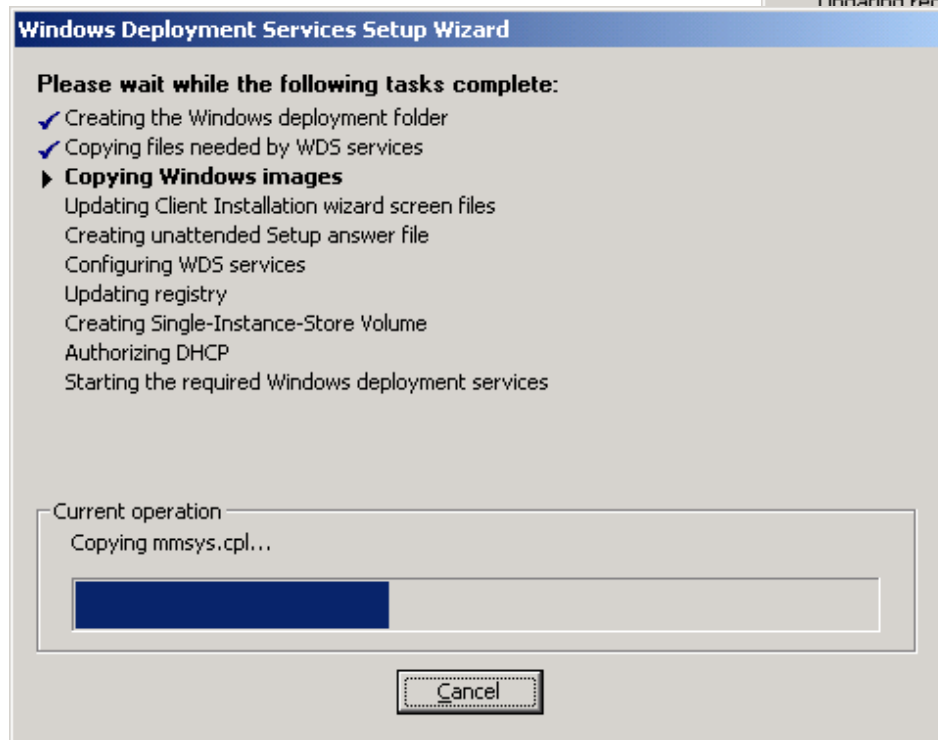
Review the Settings

Before creating the image, we review the settings. If we wish, we can back through the windows and change a previous response. If we agree with the review information, we will press the Finish button.



Creating an Image

An image of the operating system will be written to the E: drive on the RIS server. When the process is complete, we can load the operating system over the network.



The process can take 10 to 15 minutes.