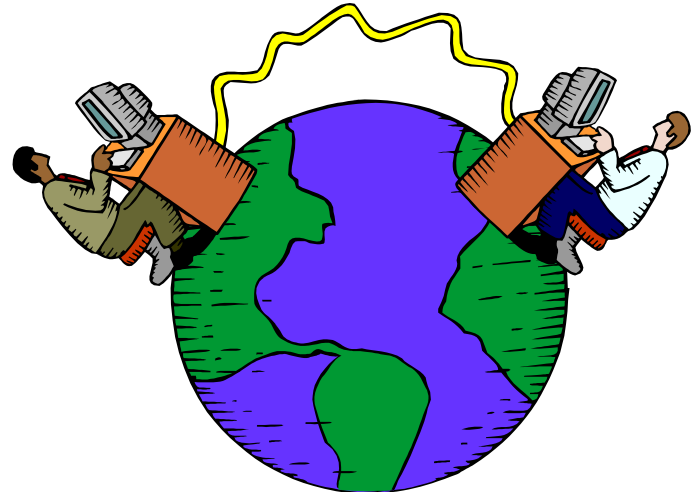


Install SNMP on a Windows 2008 Server

June 13, 2013

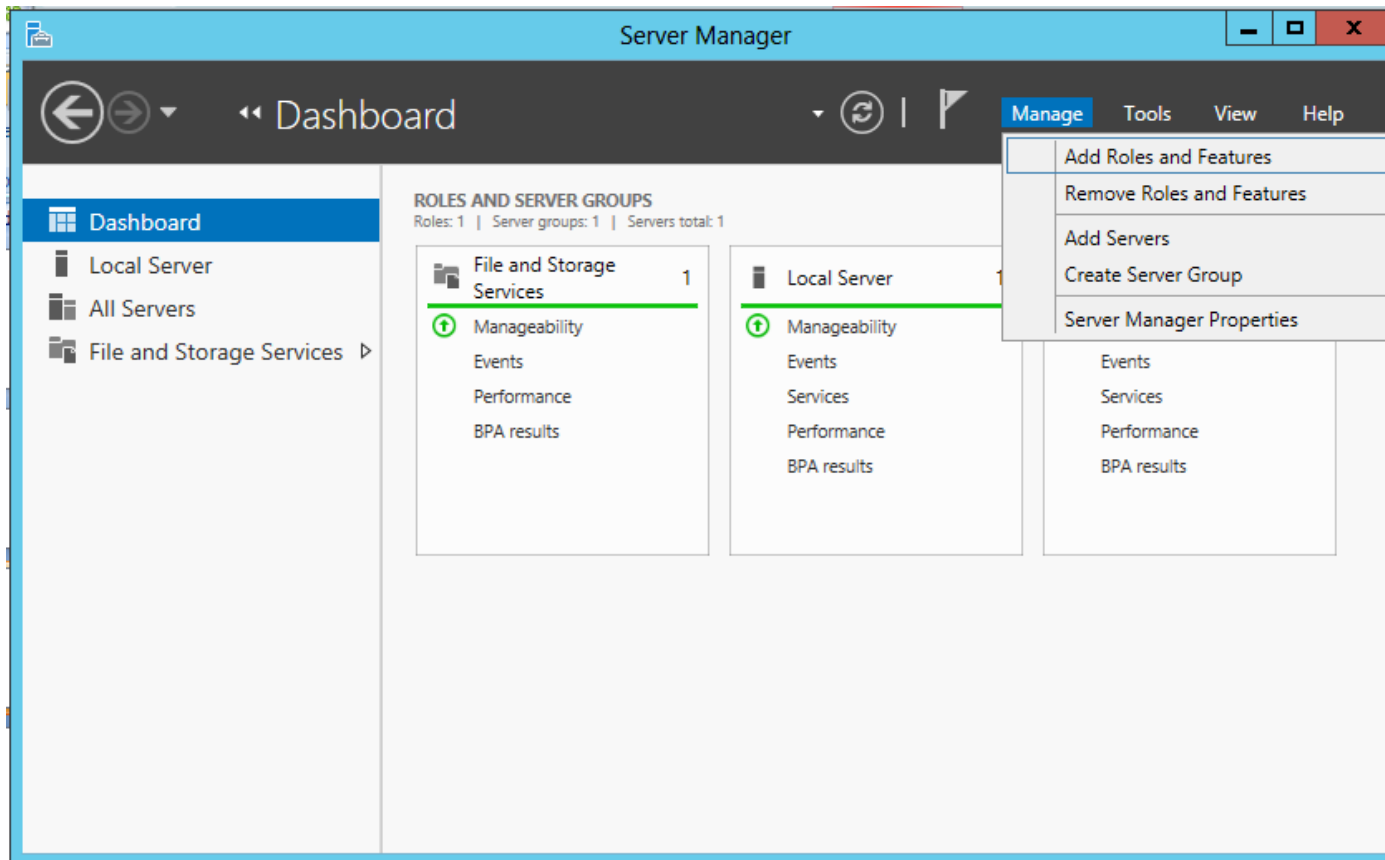
SNMP for Networking

Simple Network Management Protocol (SNMP) is part of the TCP/IP suite and is required when setting up some Network Interface Cards (NIC), so before loading a network controller driver on a Windows Server 2012 computer, we may need to install the SNMP feature.



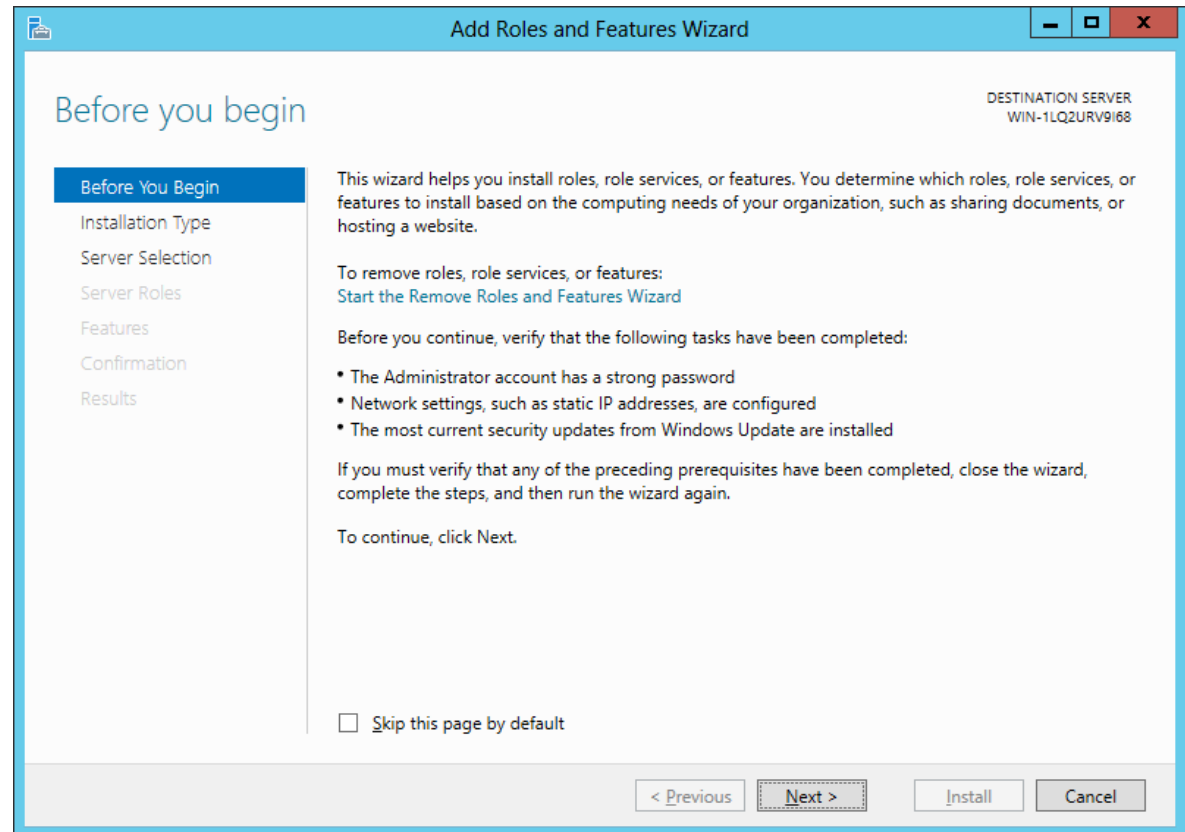
Setup Security Policies

To add a new feature on the Windows 2012 Standard Server, we select the Server Manager button from the Task Bar and select Manage from the Dashboard. From the list we choose Add Roles and Features.



Before You Begin

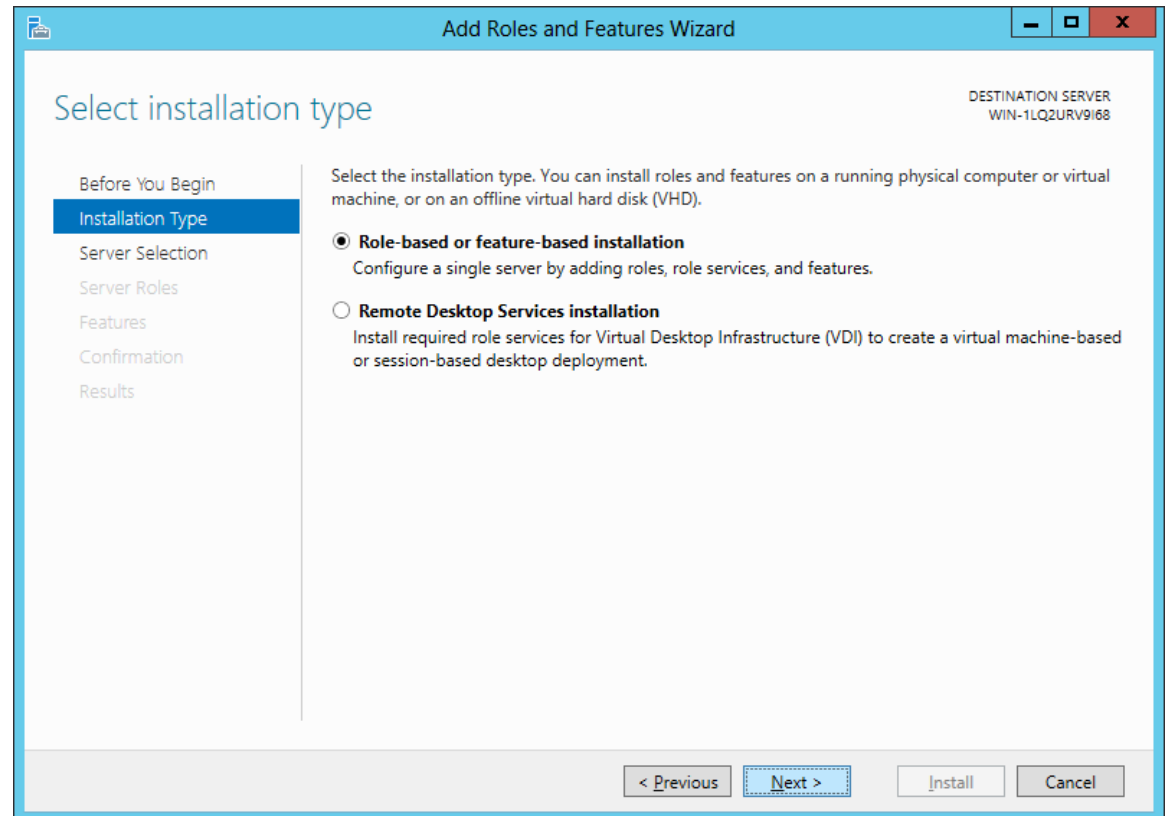
Before we add a feature to the Windows 2012 Standard Server, we will want to have a smart password on our administrator account, to configure our network connections with a static IP address and we want to have the most current Service Packs and Windows Updates loaded. If this is done, then we can go ahead and press the Next command button.



Installation Type

Then we opt for the installation type which is either Role based or Remote Desktop Services Installation. For a stand alone server, we will choose the Role based option.

Press the Next button to continue.



Select Destination Server

Now we will select a server from the server pool. This can be a physical or virtual server. We opt to choose a server from the server pool and we highlight our server name from the list.

Press the Next button to advance.

The screenshot shows the 'Add Roles and Features Wizard' window. The title bar reads 'Add Roles and Features Wizard'. The main heading is 'Select destination server'. On the right side, there is a 'DESTINATION SERVER Charm' label. The left sidebar contains a list of steps: 'Before You Begin', 'Installation Type', 'Server Selection' (highlighted in blue), 'Server Roles', 'Features', 'Confirmation', and 'Results'. The main content area has the instruction: 'Select a server or a virtual hard disk on which to install roles and features.' Below this are two radio buttons: 'Select a server from the server pool' (selected) and 'Select a virtual hard disk'. Under the 'Server Pool' section, there is a 'Filter:' input field. Below the filter is a table with the following data:

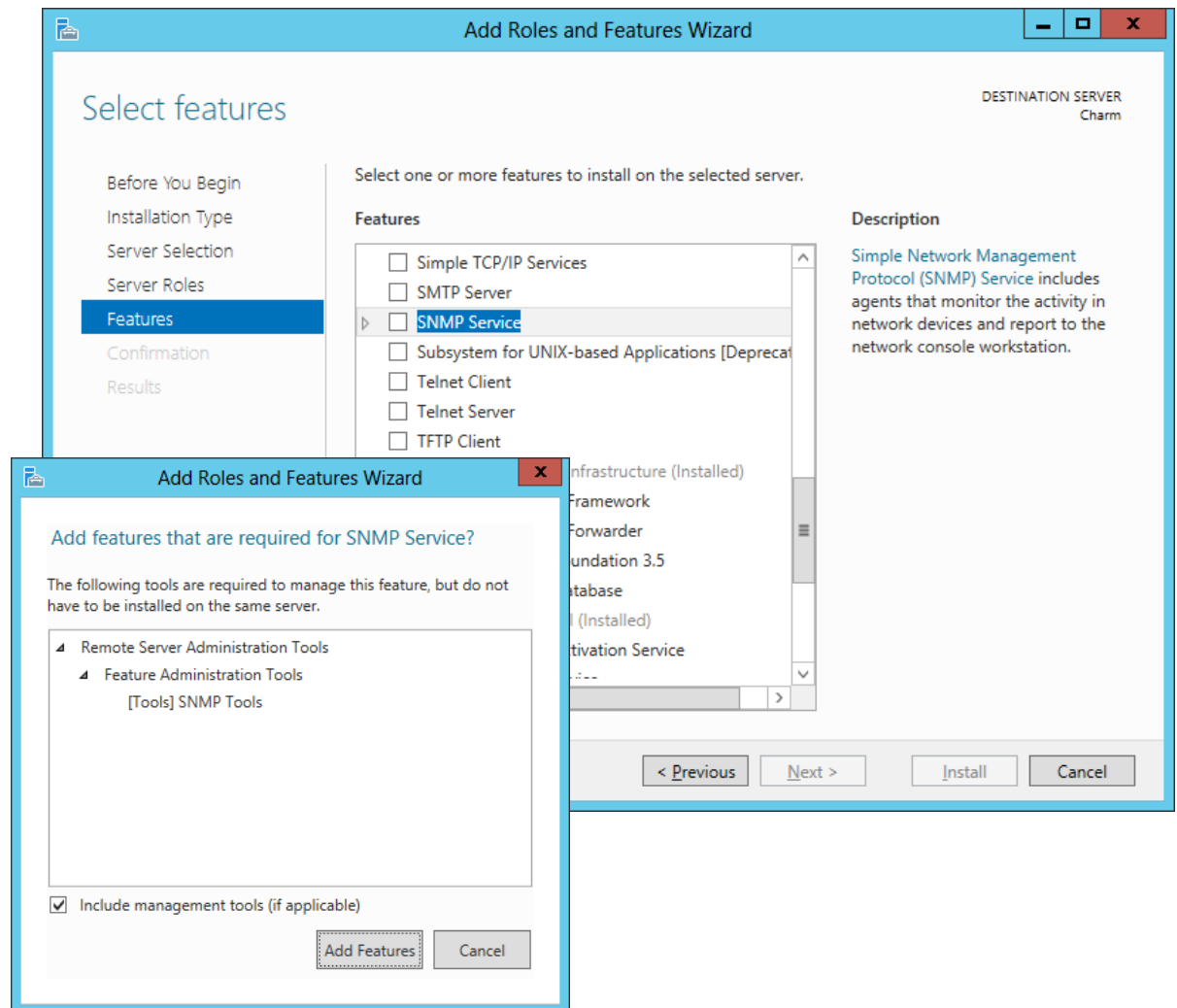
Name	IP Address	Operating System
Charm	192.168.10.230	Microsoft Windows Server 2012 Standard

Below the table, it says '1 Computer(s) found'. A note at the bottom states: 'This page shows servers that are running Windows Server 2012, and that have been added by using the Add Servers command in Server Manager. Offline servers and newly-added servers from which data collection is still incomplete are not shown.' At the bottom of the window, there are four buttons: '< Previous', 'Next >' (highlighted in blue), 'Install', and 'Cancel'.

Add Roles and Features Wizard

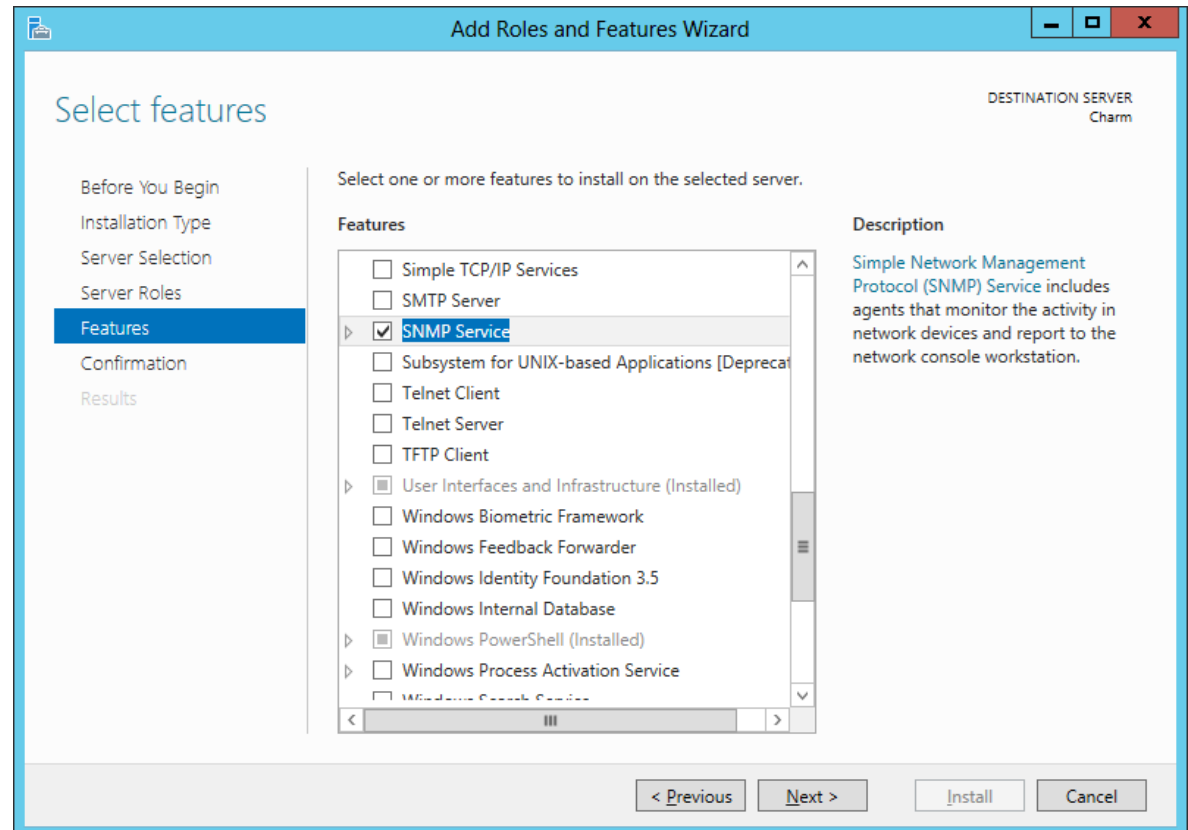
The Roles and Features Wizard launches and the features list is in alphabetical order. We annotate the SNMP Services checkbox.

A smaller dialogue box will appear and we then press the Add Features button on that pop up window.



Confirm Installation Selections

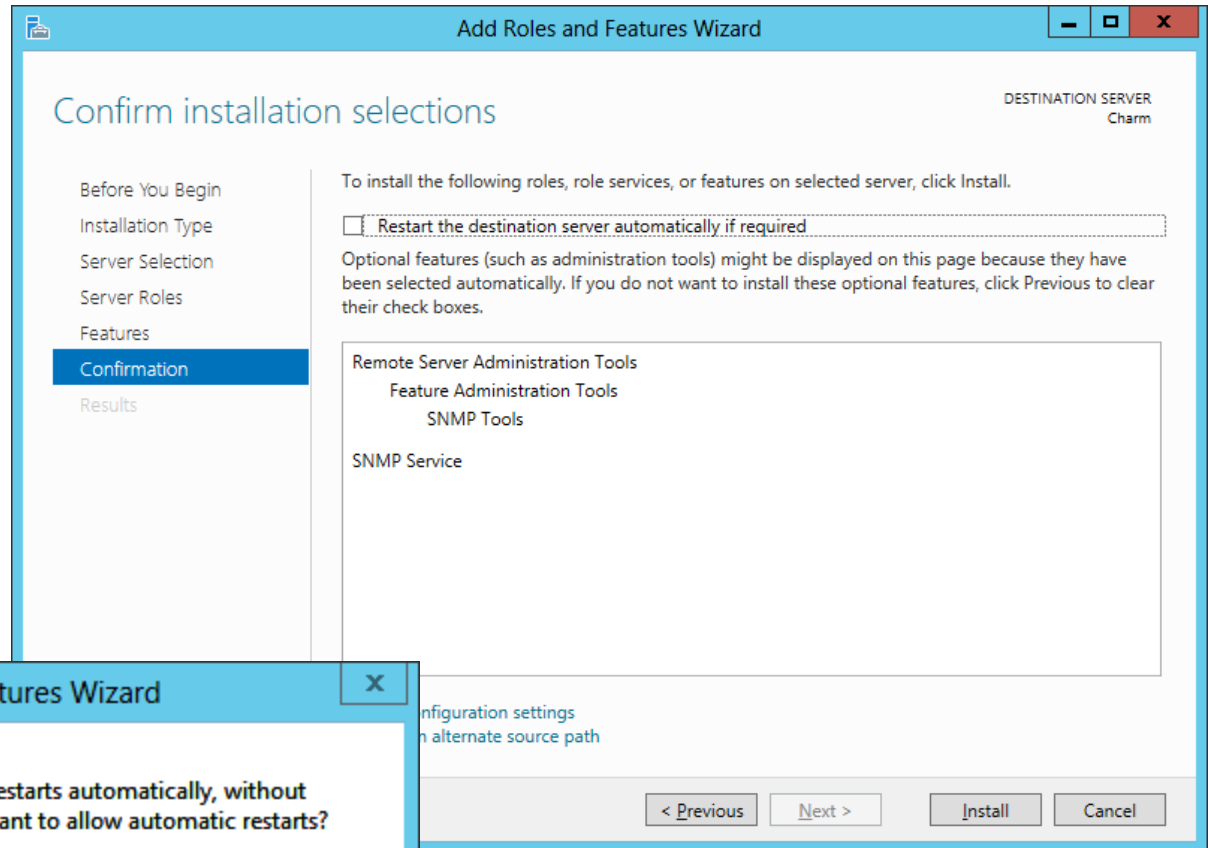
The SNMP feature is now checked on the feature list and we push the Next button to continue.



Confirm Installation Selections

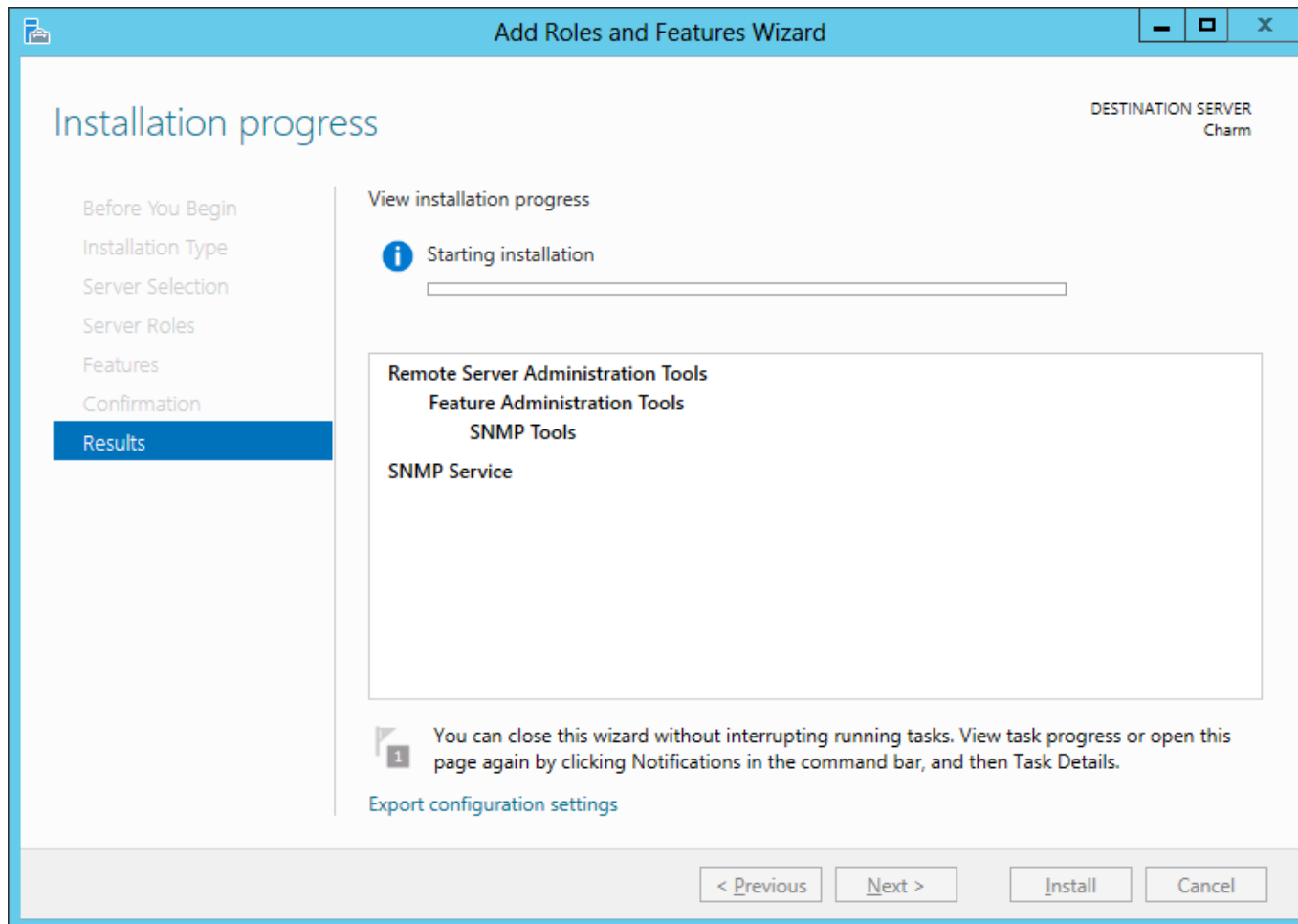
We can see the SNMP Services and WMI Provider listed and we then push the Install button to advance.

We can allow automatic restart if we answer yes to the small message box that appears.



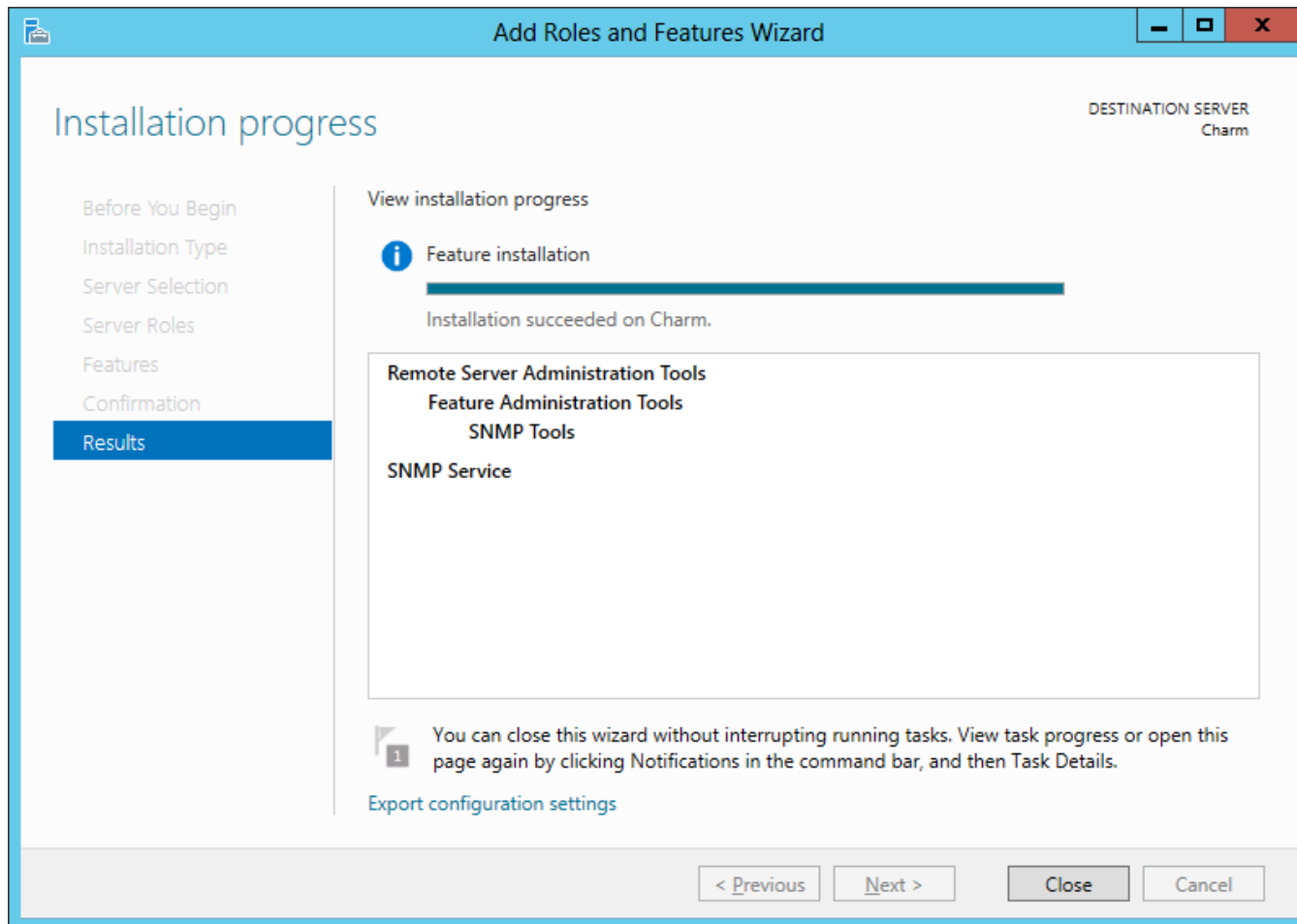
Installation Progress

It will take several minutes to complete the installation of the SNMP Services.



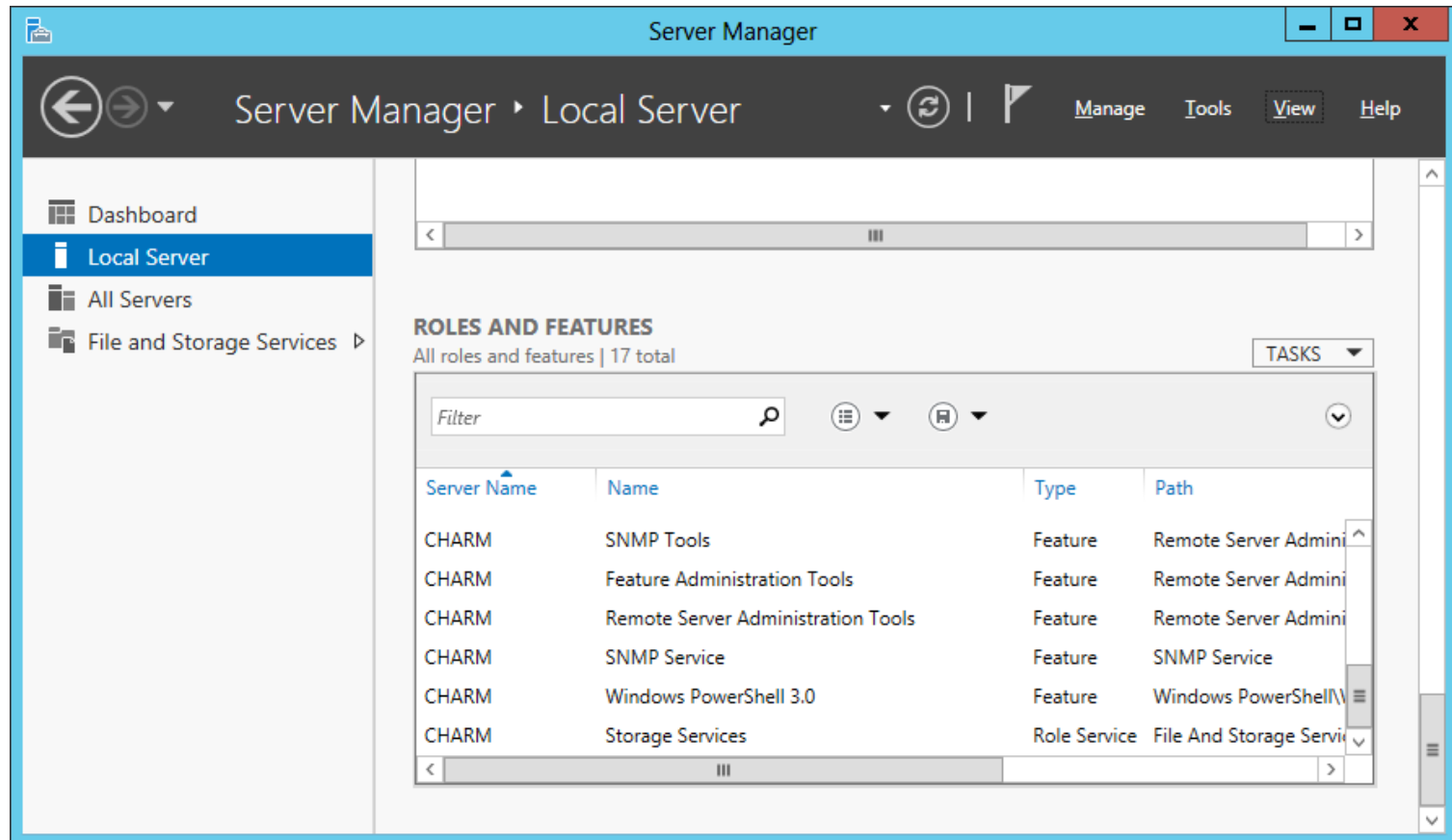
SNMP Installed

SNMP is now installed and we can close the Add Features Wizard window.



Server Manager - Features

We see we have the SNMP feature installed by looking at the dashboard, local server and scrolling down to the Roles and Features.



The screenshot shows the Windows Server Manager interface. The left-hand navigation pane includes 'Dashboard', 'Local Server' (selected), 'All Servers', and 'File and Storage Services'. The main content area is titled 'ROLES AND FEATURES' and shows 'All roles and features | 17 total'. Below this is a table of installed features:

Server Name	Name	Type	Path
CHARM	SNMP Tools	Feature	Remote Server Admini
CHARM	Feature Administration Tools	Feature	Remote Server Admini
CHARM	Remote Server Administration Tools	Feature	Remote Server Admini
CHARM	SNMP Service	Feature	SNMP Service
CHARM	Windows PowerShell 3.0	Feature	Windows PowerShell\
CHARM	Storage Services	Role Service	File And Storage Servi