

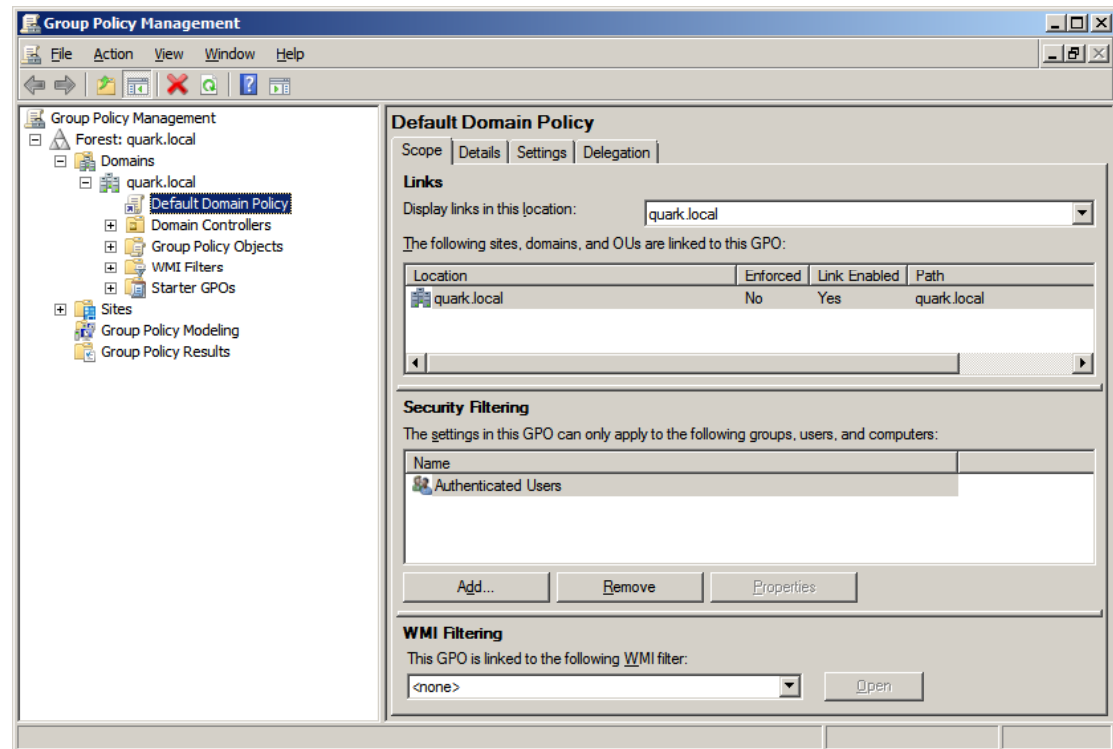
# User Configuration Policies

June 18, 2012

# Open Group Policy Management

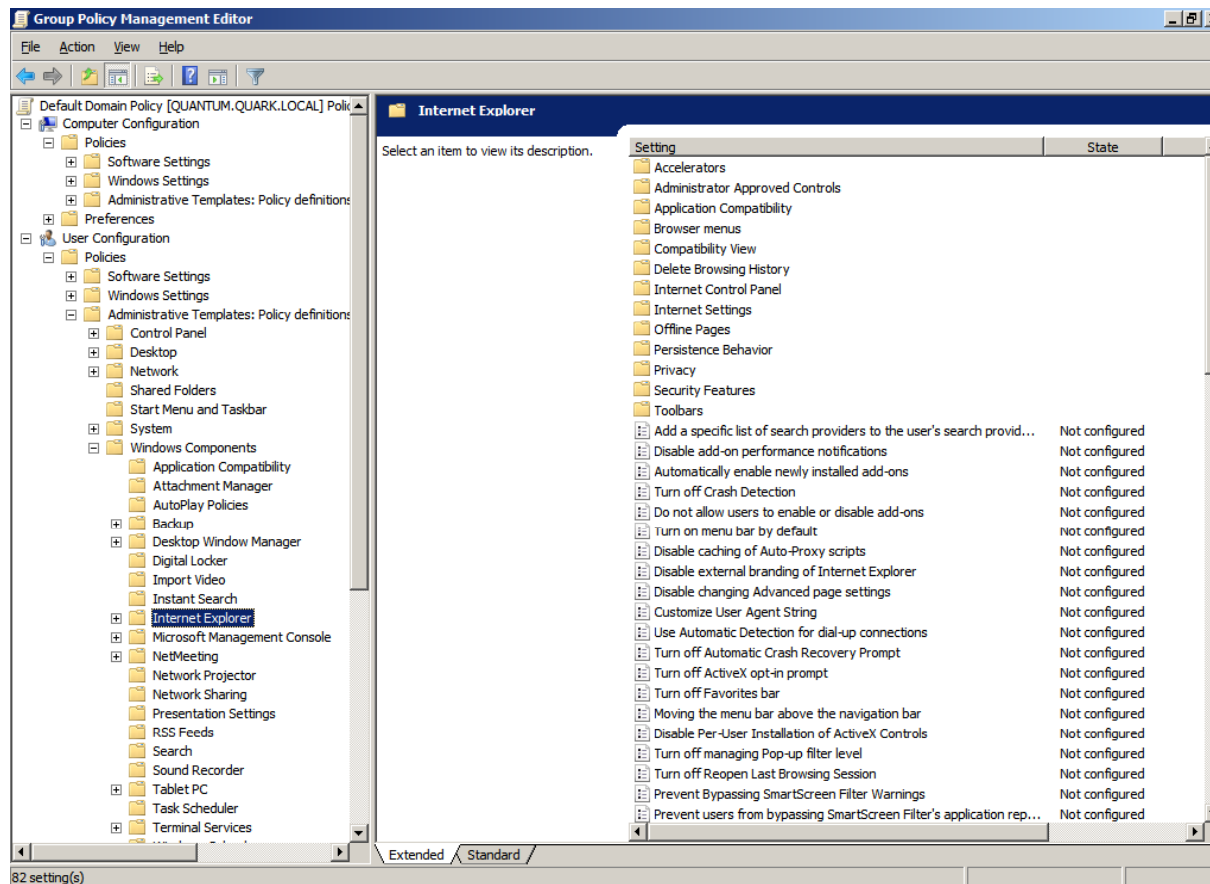
User Configuration Policies can be enabled by going to the Start menu, selecting Administrative Tools and choosing Group Policy Management. The Group Policy Management window will appear.

We should right click on Default Domain Policy and select Edit from the menu.



# User Configuration Policy

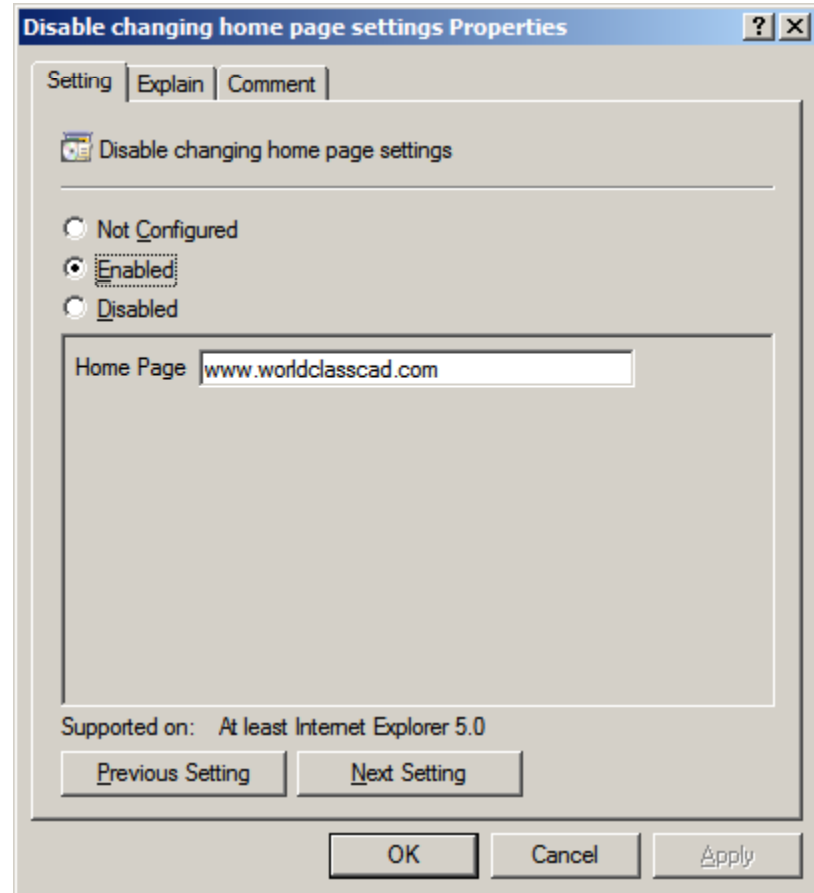
Instead of accessing computer configuration, we access the user configuration policy, then Administrative templates and Windows Components. We highlight Internet Explorer. Find Disable changing home page settings and double click on it.



# Disable Changing Home Page

Disable Changing Home Page policy is not configured. If we want to make the World Class CAD website the home page, we enable the policy and we can type the home page address in the textbox.

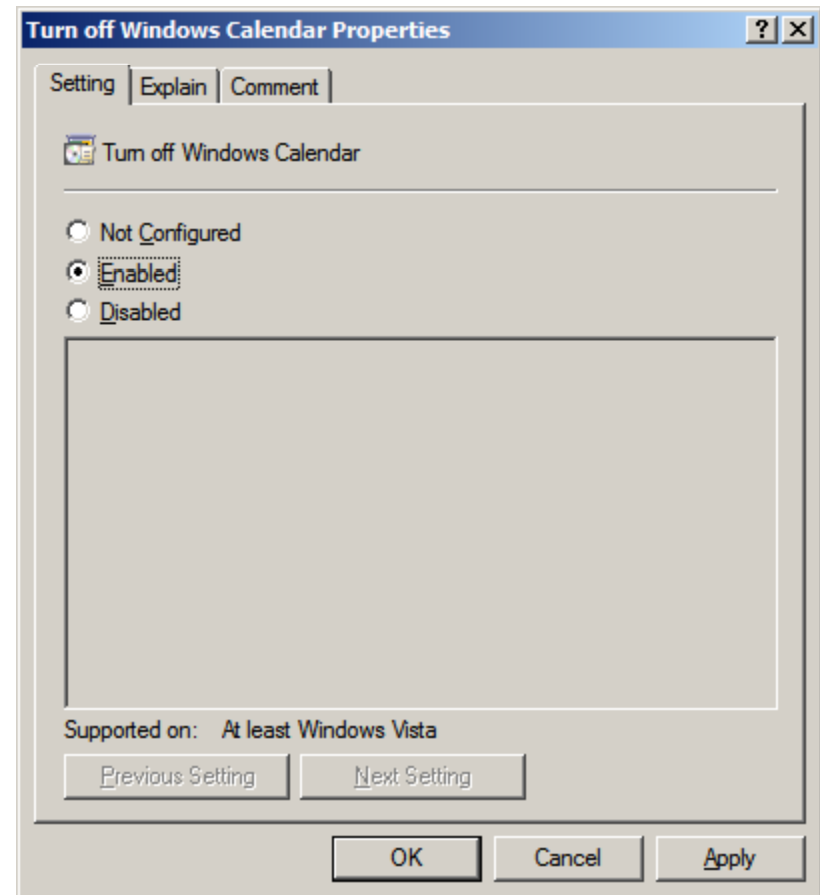
When you enable this policy, the user will not be able to set their own home page.



# Turn Off Windows Calendar

We can make more User Configuration changes by selecting Windows Calendar in the Windows Components list in the left pane.

If we enable the Turn Off Windows Calendar policy, the Windows Calendar will be turned off for the user.

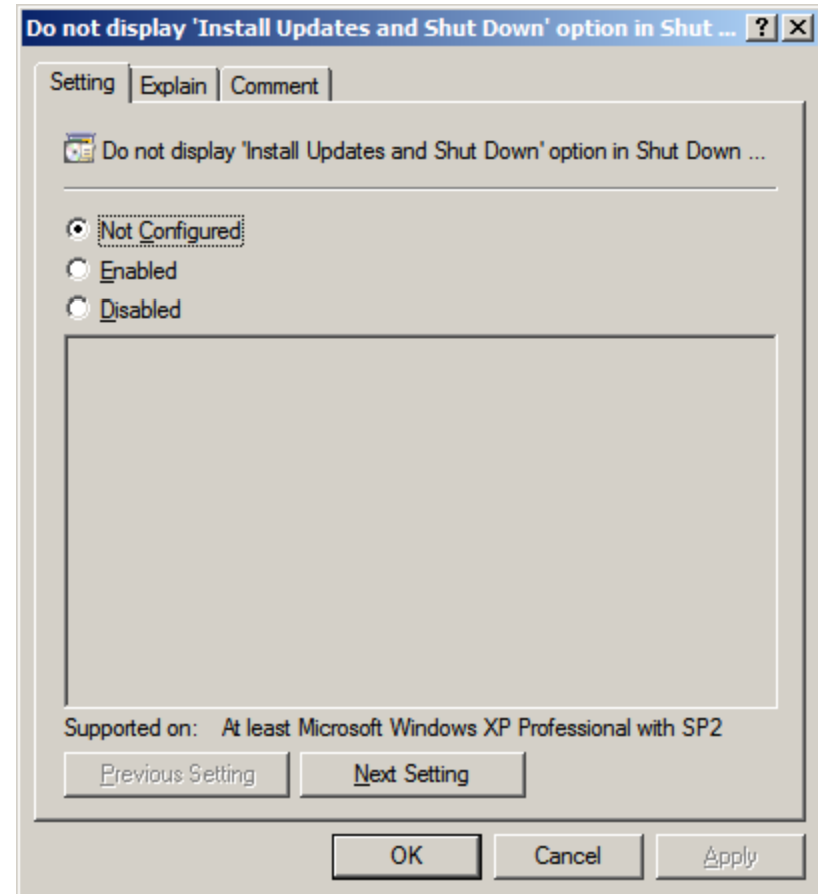


# Windows Updates

We can make more User Configuration changes by selecting Windows Updates in the Windows Components list in the left pane.

Install Updates and Shut Down policy setting allows you to manage whether the Install Updates and Shut Down option is displayed in the Shut Down Windows dialog box.

If you enable the policy, this option will not appear in the user's list. If you disable the option, it can appear in the list if Windows Updates are available for the machine.



# Make More User Policies

Make five more User Configuration polices on your Windows 2008 Server.

Record the policy name and configuration.

1. \_\_\_\_\_
2. \_\_\_\_\_
3. \_\_\_\_\_
4. \_\_\_\_\_
5. \_\_\_\_\_

