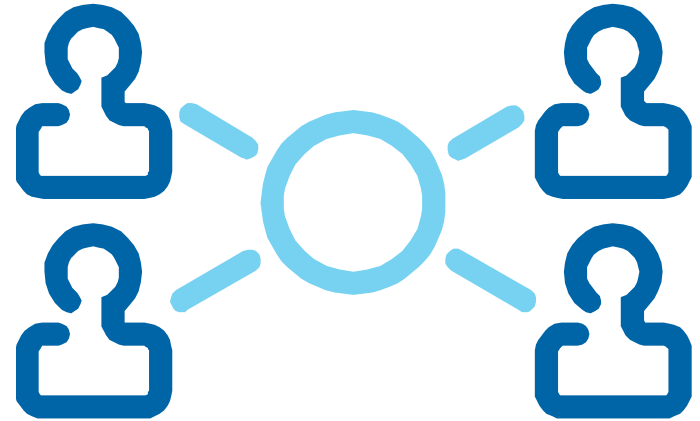


Setting the Security Policies

May 6, 2012

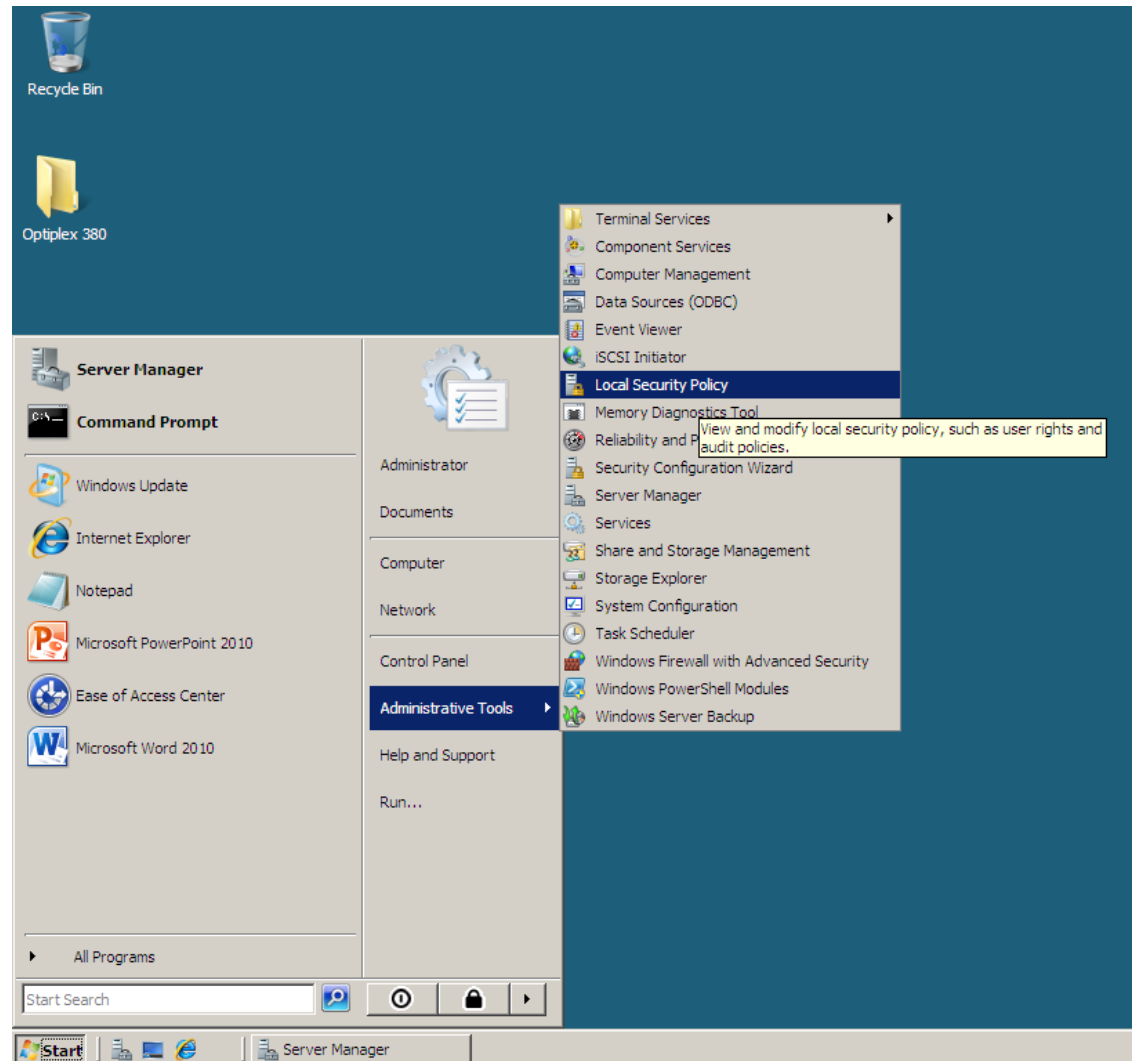
Security for Administrators

While larger companies have their servers secured in secluded and well protected areas, in a small business, servers can be in rooms around other employees. We want to have password security somewhat more complex than what we see on the Internet. We need to set the password policy after loading the computer, the Service Packs and Windows Updates and prior to adding our administrators.



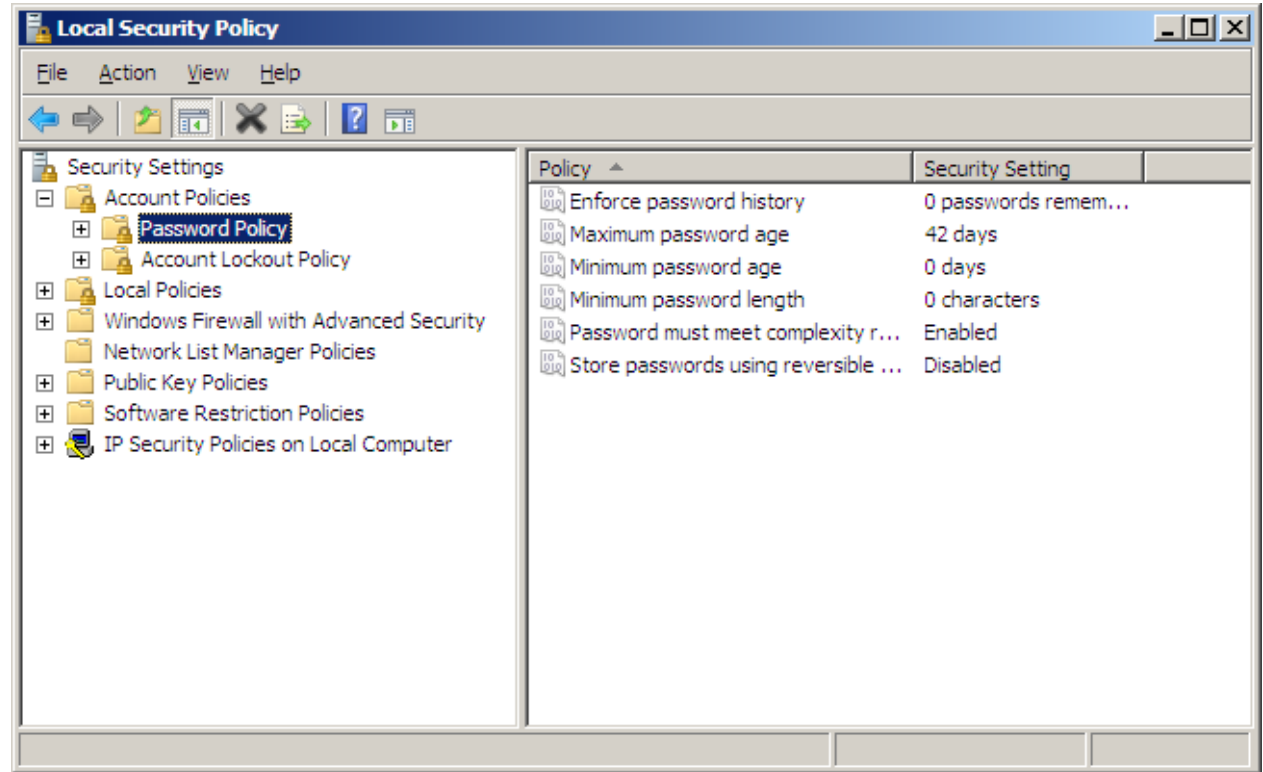
Setup Security Policies

To set the security policies for the Windows 2008 server, we select the Start button and select Local Security Policies.



Local Security Policies

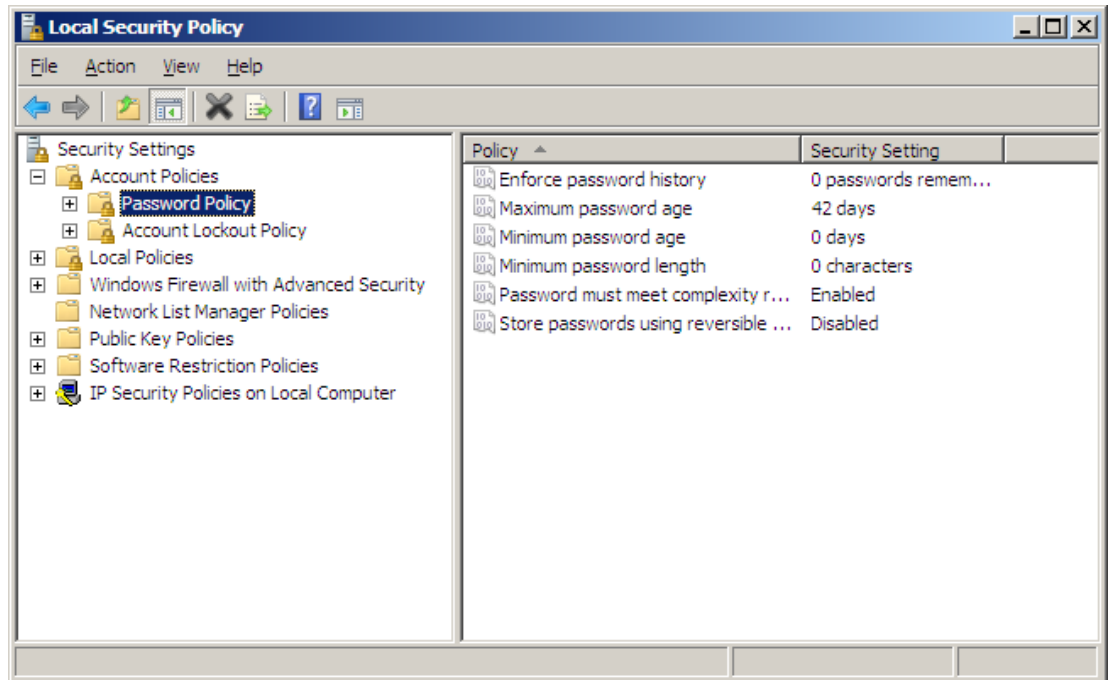
The Local Security Policies window will open. In the left pane, we select Account Policies and then Password Policies. A list of Password Policies will appear in the right pane.



The Password Policy

There are six policies under the Password Policy heading.

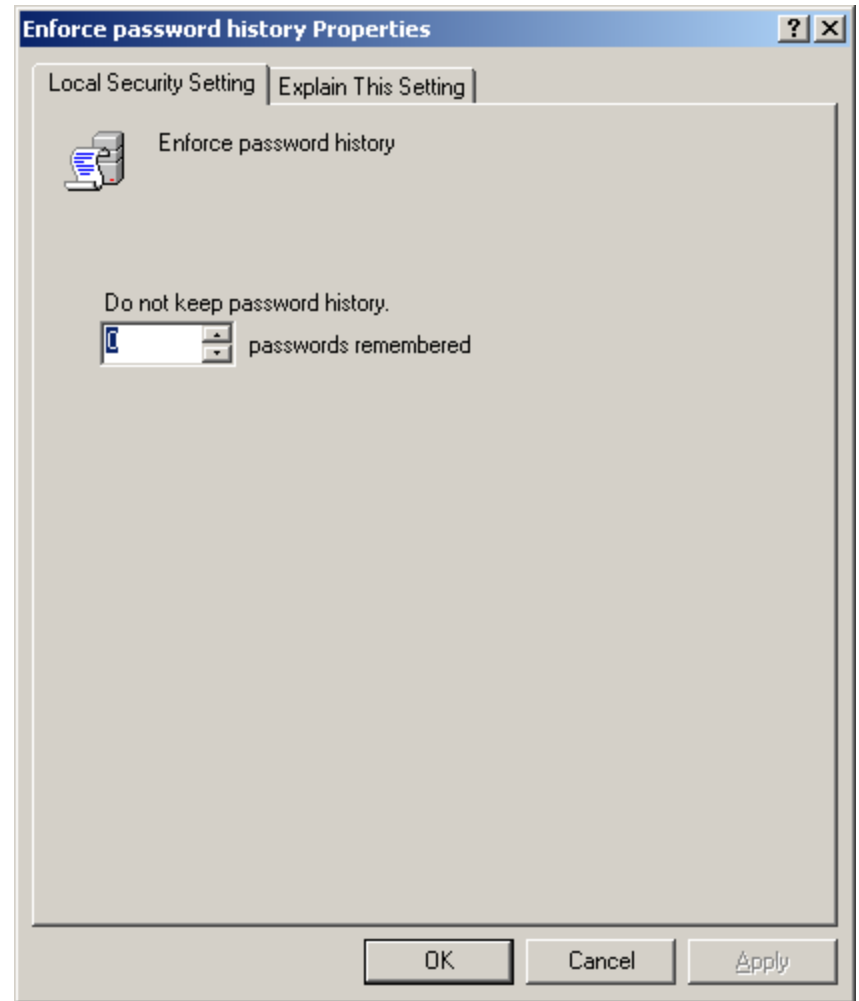
- Enforce password history
- Maximum password age
- Minimum password age
- Minimum password length
- Password must meet complexity requirement
- Store passwords using reversible encryption



Enforce Password History

Password history is a policy that keeps individuals from toggling with just a handful or two different passwords. Many people juggle between two or three passwords to fool the poorly setup server. For example, the first password can be R1PVanWinkle and the second secret phrase is StOryB0ard21. If we do not enforce the password remembered variable, they can just toggle between the two every 30 days.

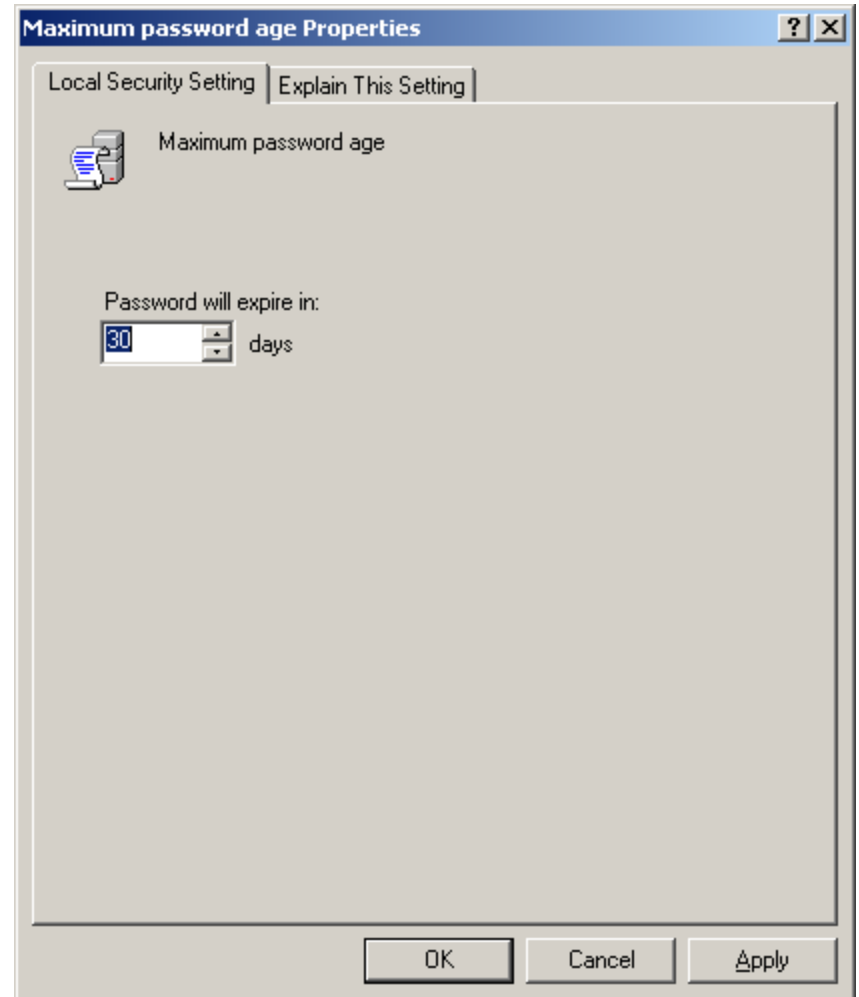
The default for password history is 0, however we will change the number to the maximum of 24.



Maximum Password Age

Maximum password age can range between 1 to 999 days. One day is extreme and nearly a thousand days, we might as well keep the password permanent. Many professionals believe that 15 to 30 days range is appropriate.

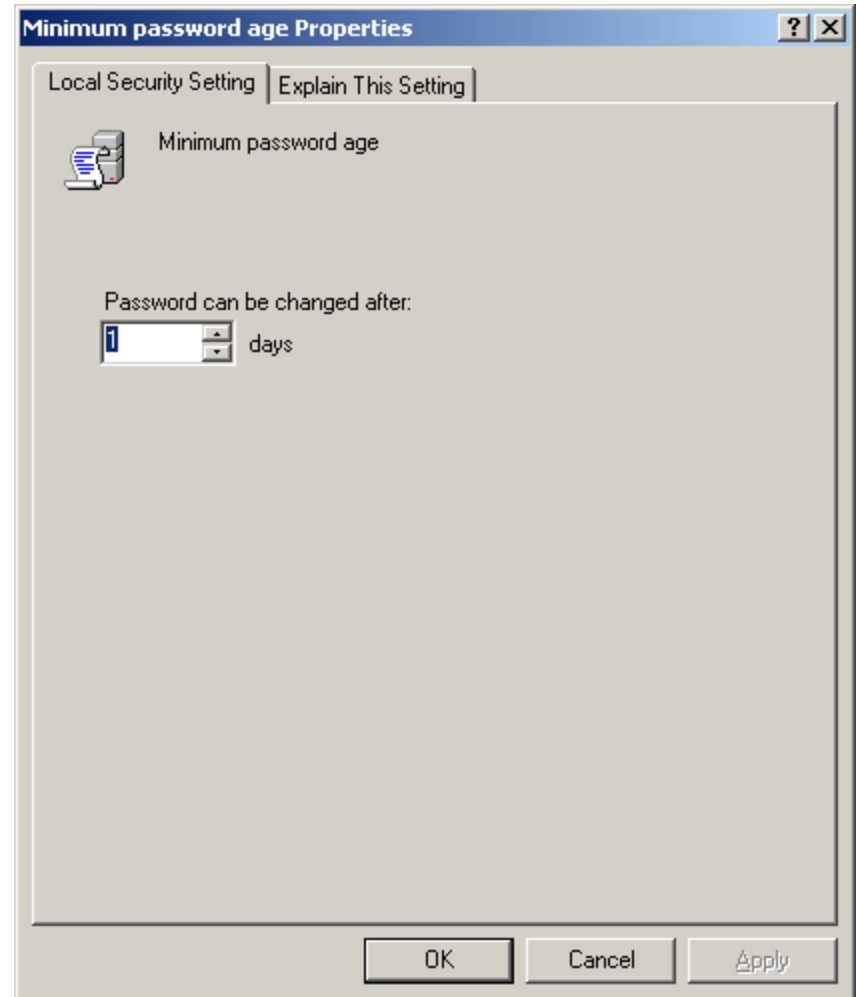
The system default is 42 days, however, we will require the staff to change their password every 30 days.



Minimum Password Age

Minimum password age can range between 1 to 998 days. By increasing the number of days, we can help enforce the time until the computer user return to their favorite password. If this is a problem in your department, we can increase the number of days to 29, one below the maximum days we set.

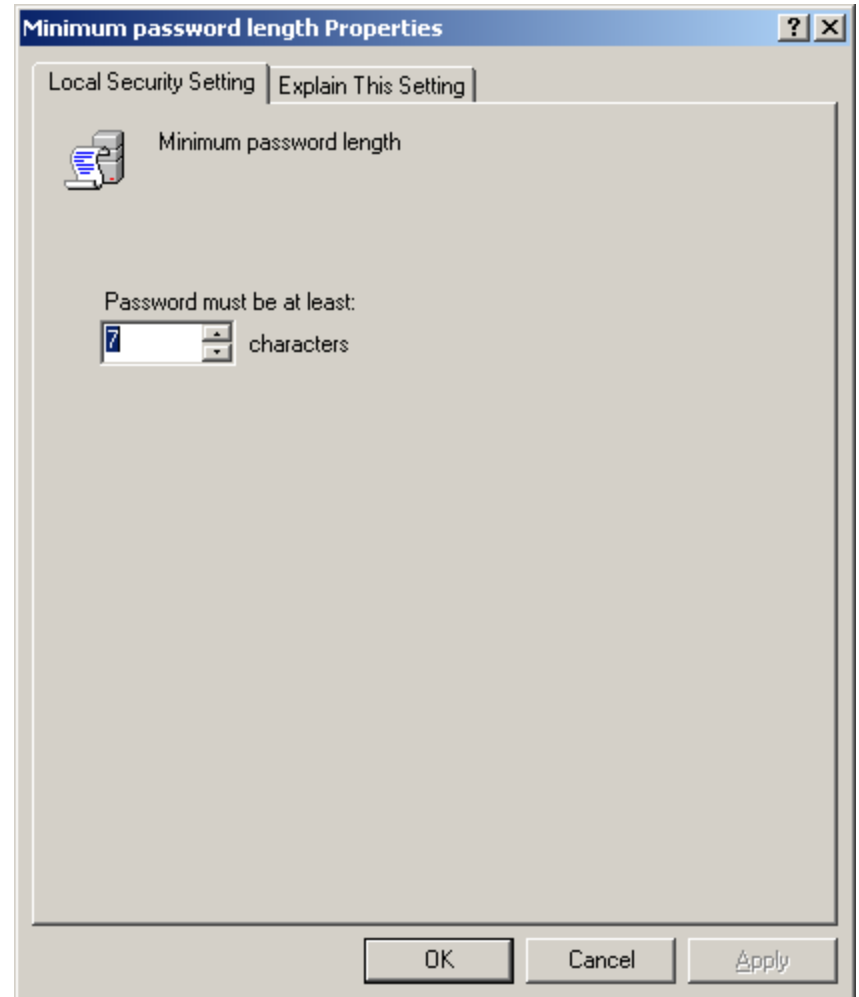
The system default is 1 day, and we will keep the personnel from changing their password for one day.



Minimum Password Length

Minimum password length is one of the two policies that help us create a smart password criteria. We need at least 6 characters and then we want those symbols to be upper case, lower case letters, numbers and special characters.

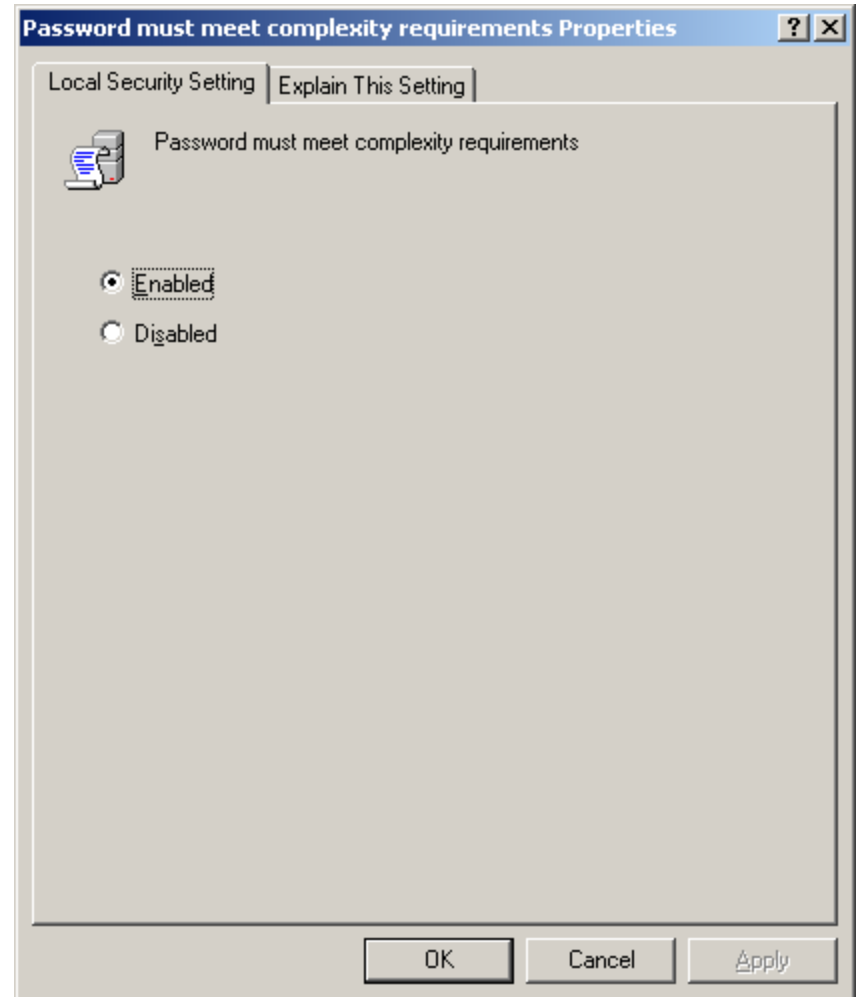
We will set the password to 7 characters.



Password Must Meet Complexity Requirement

Password must meet complexity requirement is the second of the two policies that help us create a smart password. We need to enable the regulation and then we will have to have three of the four criteria which are upper case, lower case letters, numbers and special characters in the password.

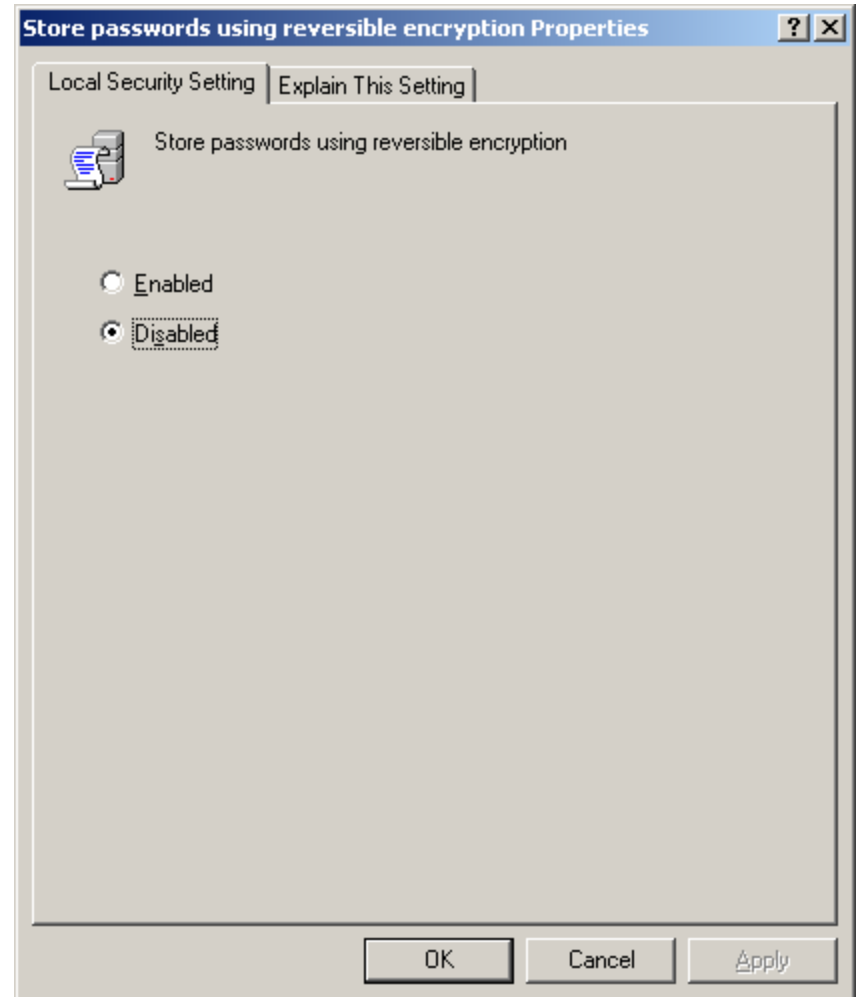
We will enable the rule.



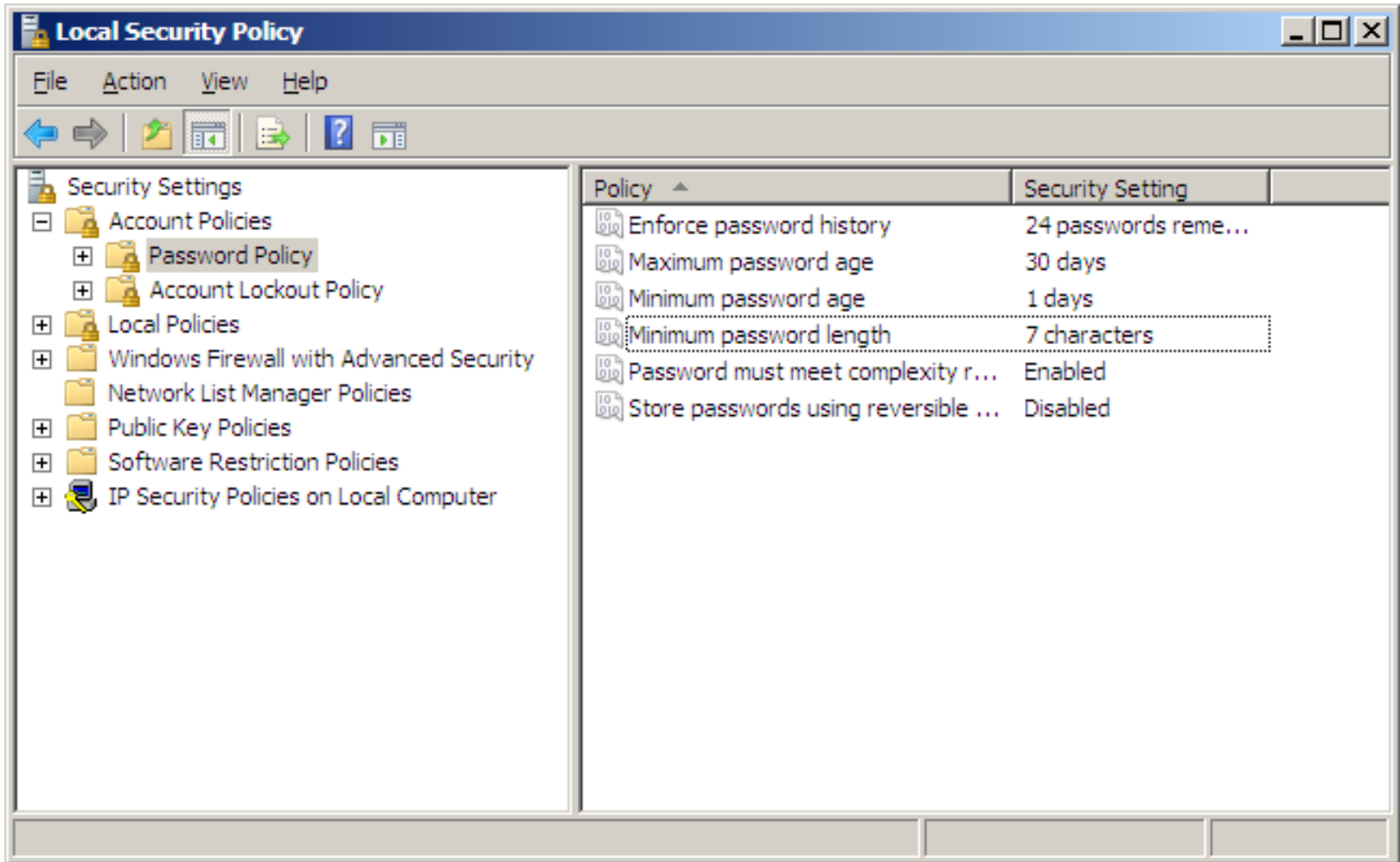
Store Passwords Using Reversible Encryption

Only used in cases where applications need knowledge of user's passwords. We should leave the policy disabled unless required by a server application.

Default setting is disabled and we will keep it that way.



The Local Security Password Settings



We can observe all of our password security changes in the right pane.