

Joining a Windows 2008 Domain with a Remote Installation Server (RIS)

June 13, 2011

RIS Server Joining a Domain

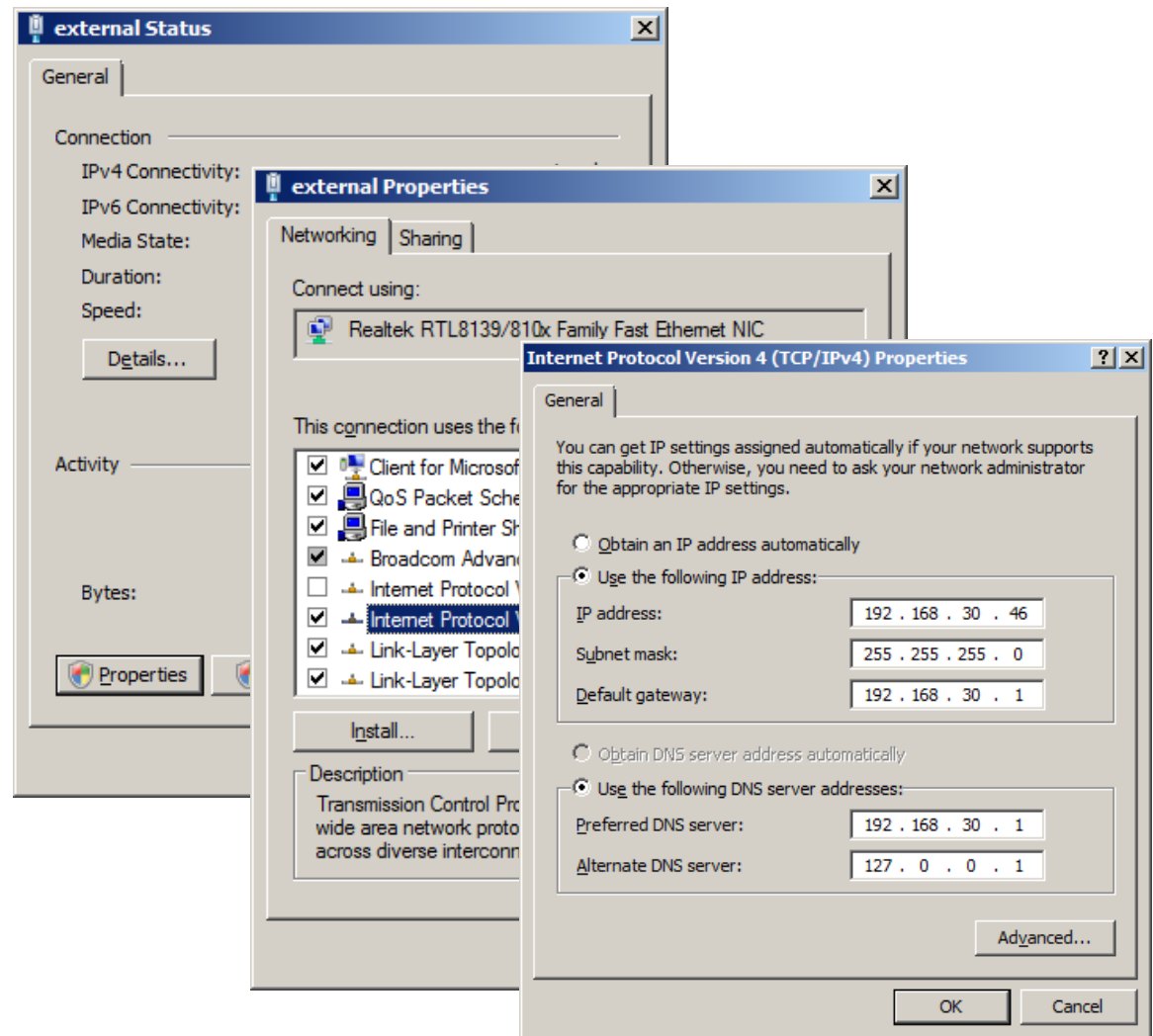
Domain controllers give the organization centralized jurisdiction over the members of the network and with Windows' Active Directory, we have managed access to files through secure pathways. We are also going to utilize the Domain Controller which is the DNS server to meet the requirement to load operating systems over the network. The Domain Controller will furthermore authorize the DHCP service on the RIS server.

Active Directory Benefits

- Client – server network
- Kerberos security
- Administrator controlled
- Centralized storage
- Easy file transfers

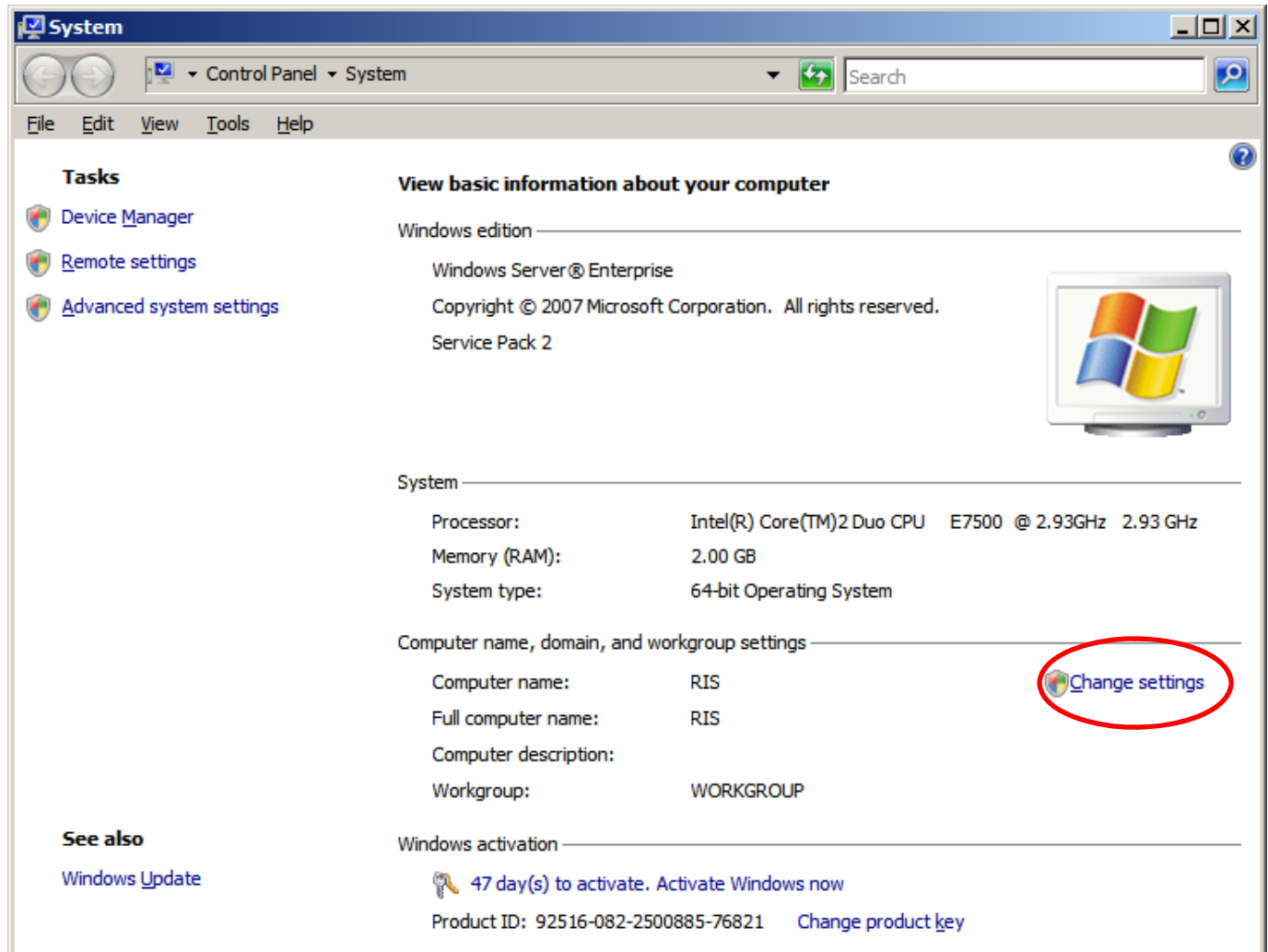
External Network Interface Card Setup

We open the external NIC status window on the RIS server and we choose the Properties button. The external NIC properties window opens and we uncheck the IPv6 checkbox since we are only using IPv4 settings. We double click on the IPv4 TCP/IP protocol and that properties window appears. We have an address on the 192.168.30 network and we are pointing at the 192.168.30.1 Domain Controller and DNS server. All settings are correct and we press OK to close the windows.



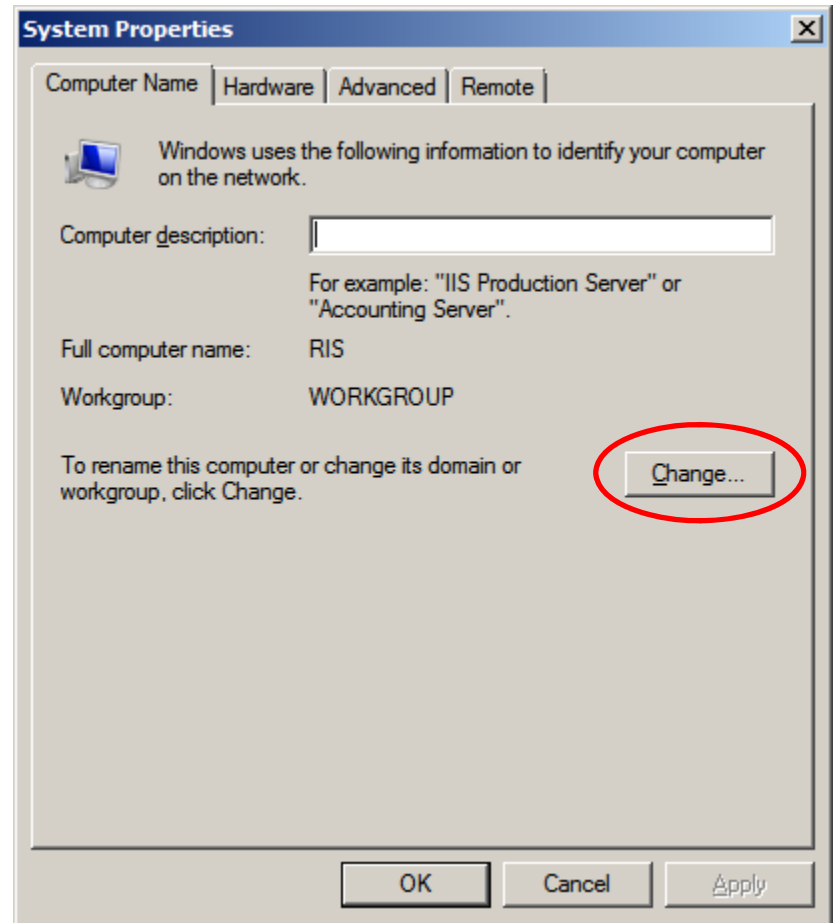
The System Window

Now, we right click on the My Computer hyperlink on the Start menu and we select Properties. The System window will appear and we will choose the Change settings hyperlink on the right side of the window.



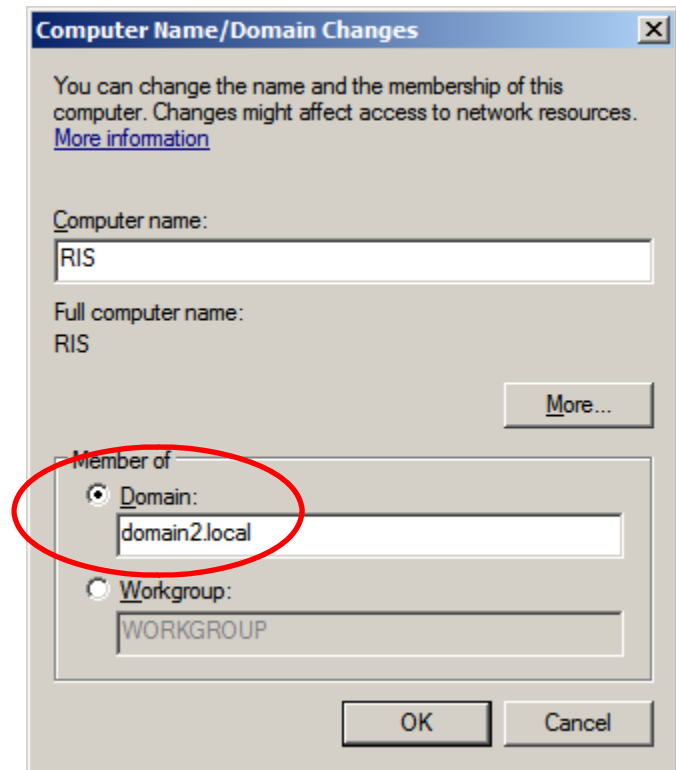
The System Properties Window

In the System Properties dialogue box, we will press the Change button.



Connecting to the Network

We have two options on this window, one to join a domain and the other to attach ourselves to a workgroup. We will pick to join a domain and we will select OK to continue.

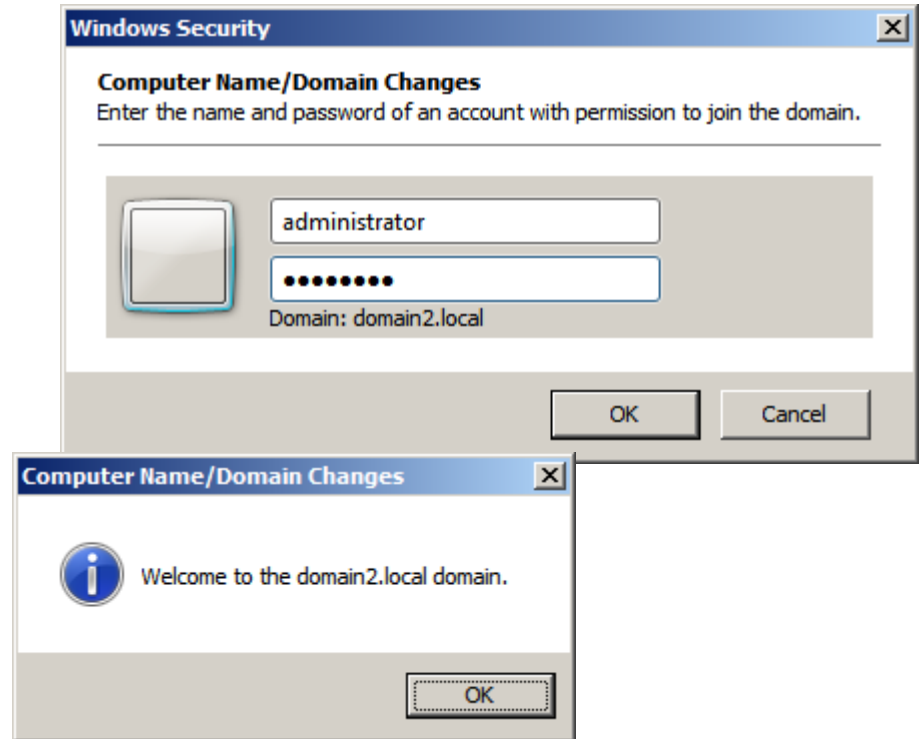


User Account and Password Information

The Computer Name / Domain Changes dialogue box needs to contain a valid username and password. We choose the OK button to advance.

Once the domain has been found, an alert message will appear for us to utilize the domain. We choose the OK button.

We will be prompted to Restart the RIS server, which we will agree to.



Restart the RIS Server

We can revisit the System window and we can see the full computer name is RIS.domain2.local and we can see the domain is domain2.local.

We are now ready to install the DHCP role for our RIS server.

