

Making a 2008 Web Server

December 14, 2010

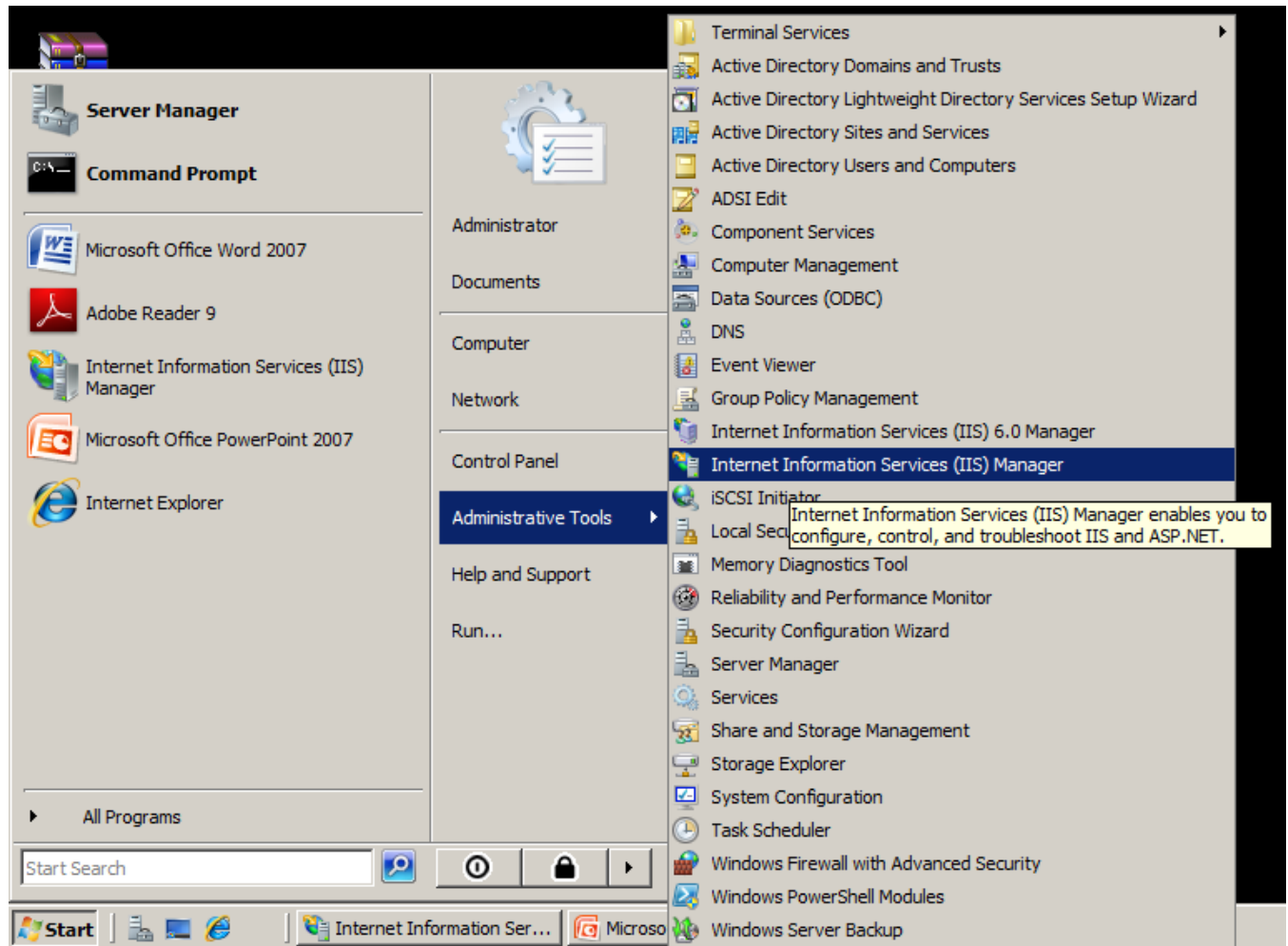
Building Our Own Web Server

We can build our own web server by utilizing the Internet Information Services (IIS) Manager which we loaded with the Windows 2008 Server.



Opening the IIS Manager Window

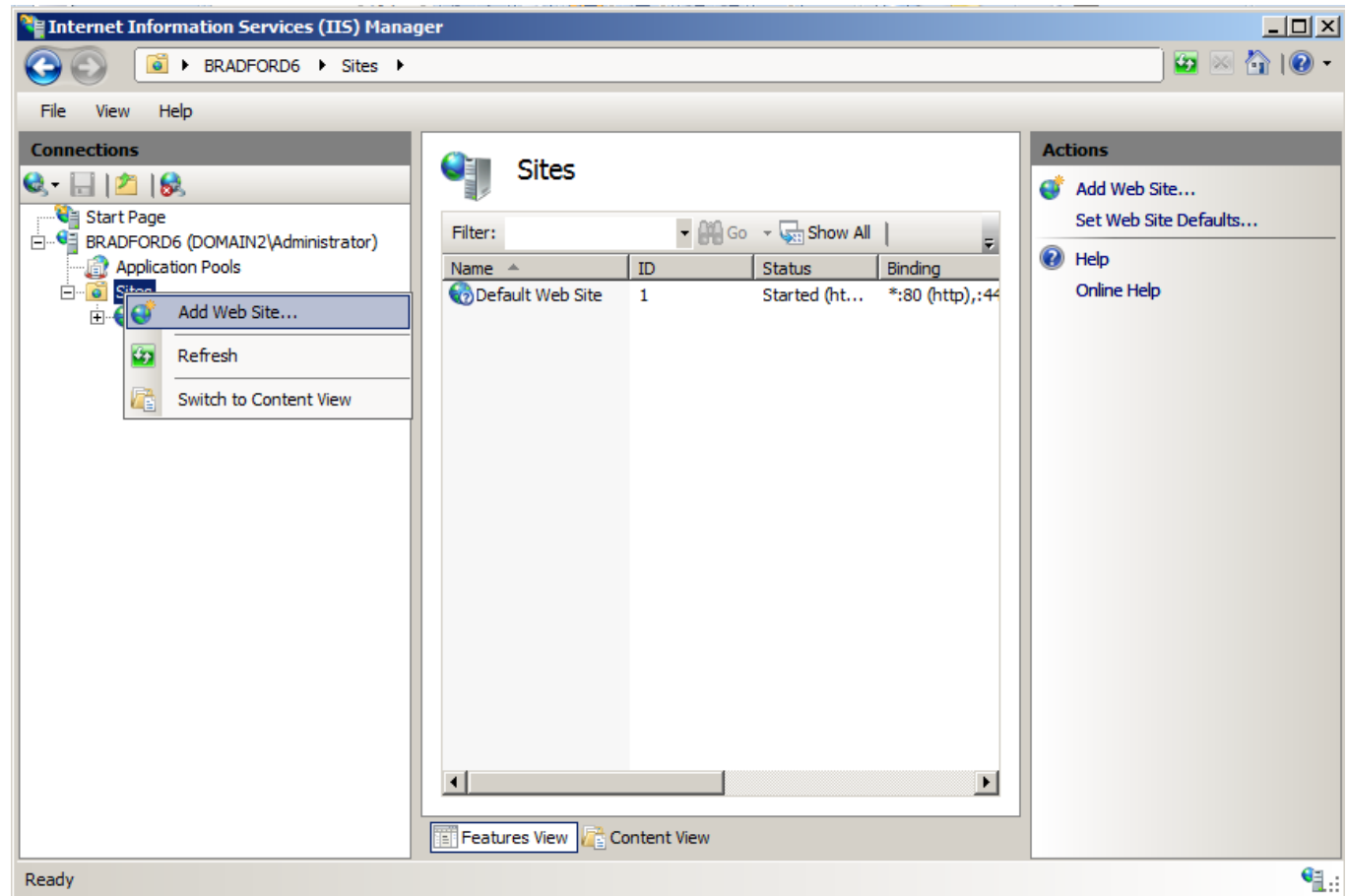
We can open the IIS Manager by choosing the Start button, then Administrative Tools, and then the IIS Manager.



The IIS Manager Window

When we open the IIS Manager, we can expand the folder to view the Sites directory.

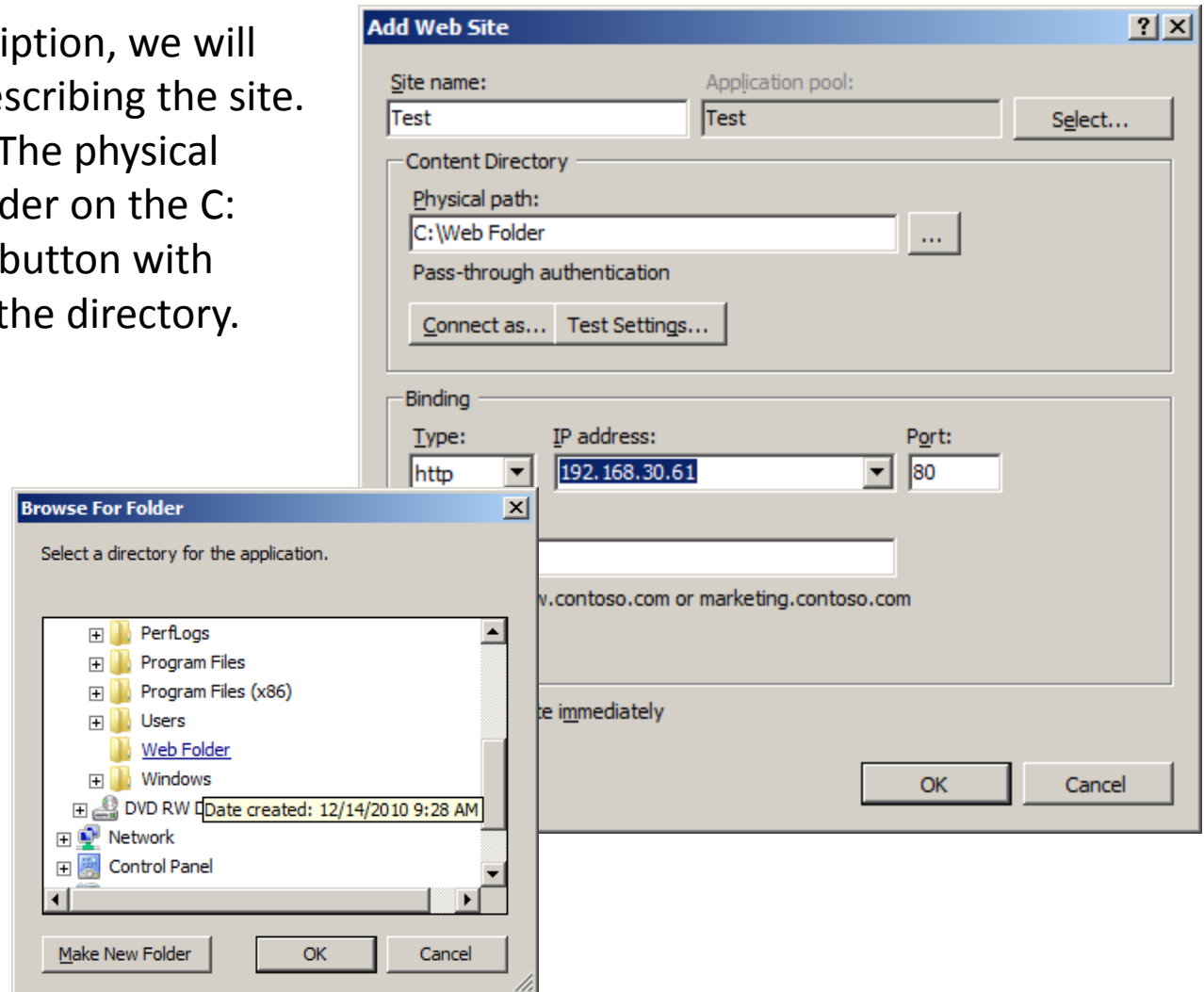
We then right click on the Sites folder and pick Add Web Site from the sub menu and Web Site.



IP Address and TCP Port

For our web site description, we will type a short phrase describing the site. Our site name is Test. The physical path is to our Web Folder on the C: drive. We click on the button with three dots and locate the directory.

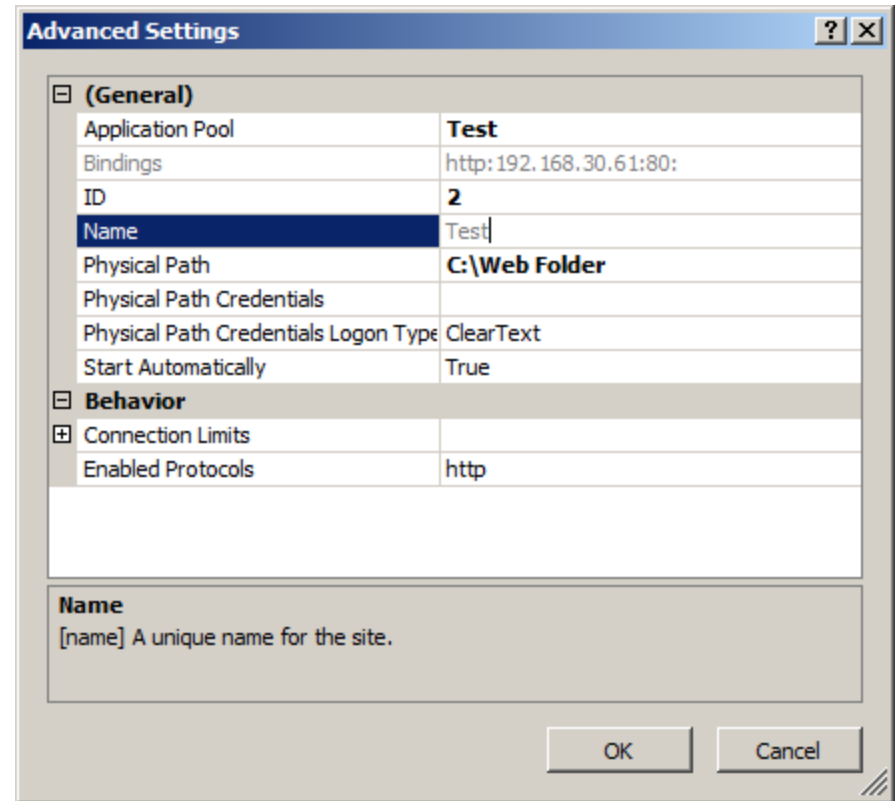
Our server has the IP address of 192.168.30.61, so we will use that address. We will use the default TCP port of 80.



Advanced Settings

We can change the settings at any point by right clicking on the web site and entering the Advanced Settings window. Here we can make changes to the web address and more.

Now we will press the OK button and go view the web site.



Checking the Website with the Web Browser

We can type 192.168.30.61 in the address bar of the Internet Explorer window and the Ohio Digital Art homepage will appear. We test computers on our network and they get the same results.

