

# Installing Windows Server 2008

April 29, 2012

# Building Our Own Windows Server

We begin our experience of working with Windows Server 2008 by selecting a 64 bit computer that has the capability to hold at least two hard drives and two Network Interface Cards. The computer can have a DVD optical drive for our Windows Server 2008 installation disk.

After setting up the computer with the proper hardware, we will place the network operating system in the optical drive tray and boot the computer to the DVD drive. Press any key when we are prompted to boot from the DVD disk.



# Install Windows Dialogue Box

When the computer loads the installation files disk, our first stop be at the Install Windows dialogue box where we will choose the language to install where English is the default. Our other two defaults are for United States time, currency, and keyboards.

We will accept all three as defaults and we select the Next command button to continue.



# Install Now

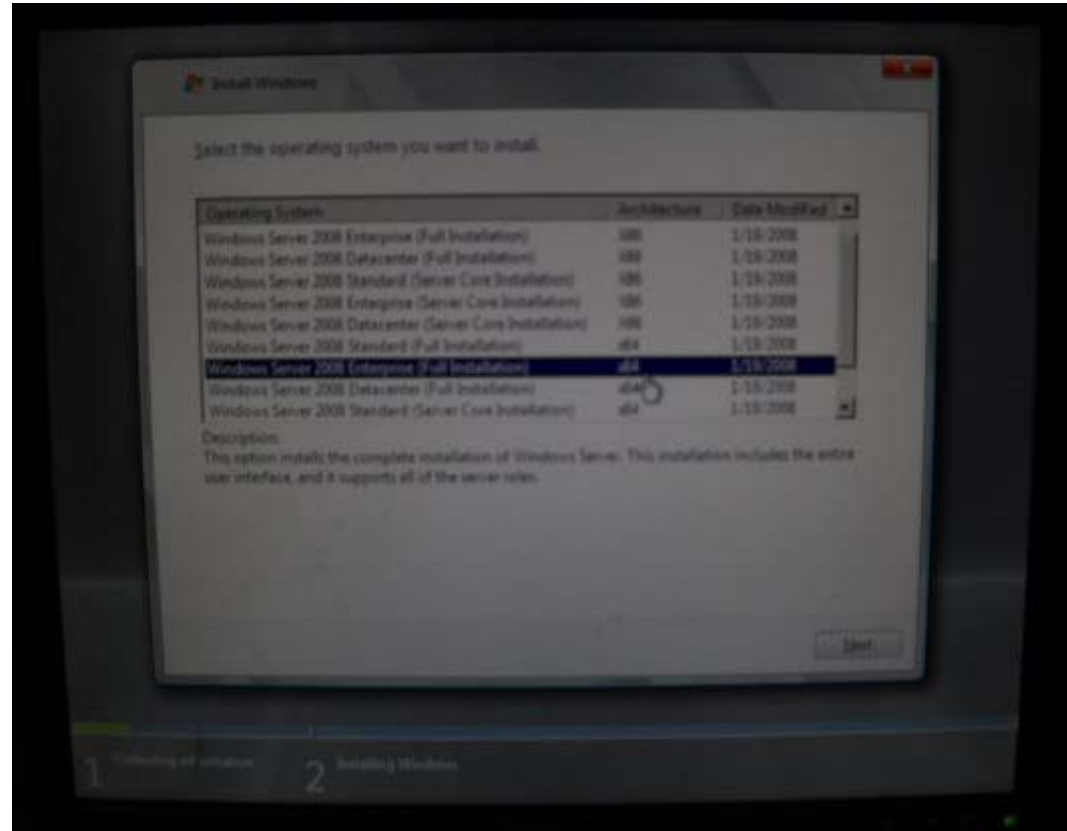
To advance with setting up our server, we depress the Install now arrow.



# Selecting the Windows Server 2008 Edition

In this instance, we will pick the x64 (64 bit) Windows Server 2008 Enterprise Edition. If we only have a 32 bit computer, we can select the x86 (32 bit) Windows Server 2008 Enterprise Edition.

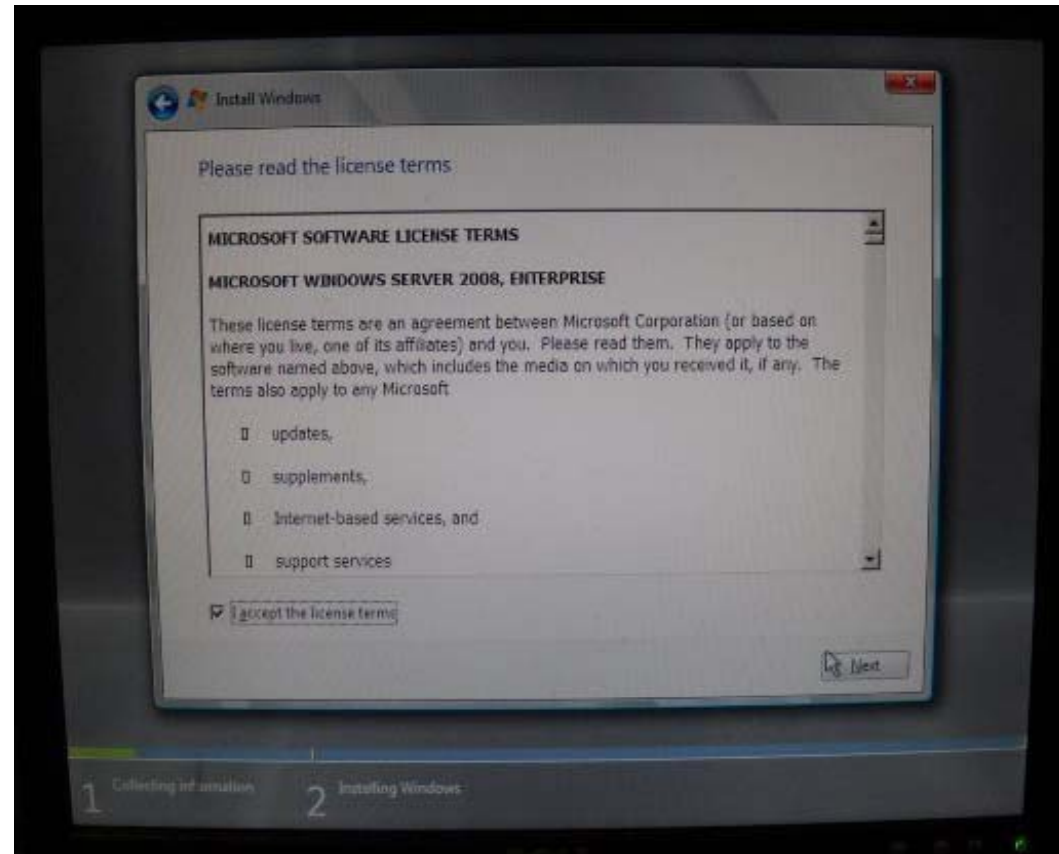
We select the Next button to go on.



# Accept the License Terms

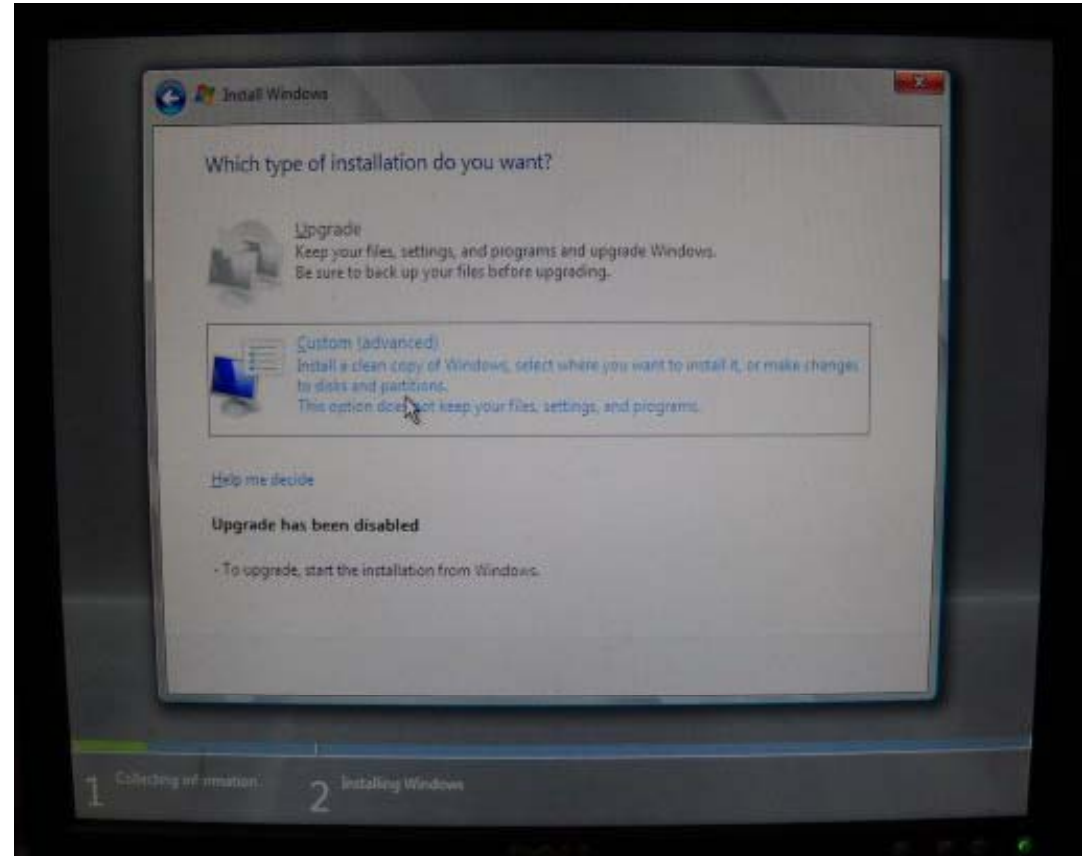
Next, we need to annotate the “I accept the license terms” checkbox.

We select the Next button to carry on.



# Type of the Installation

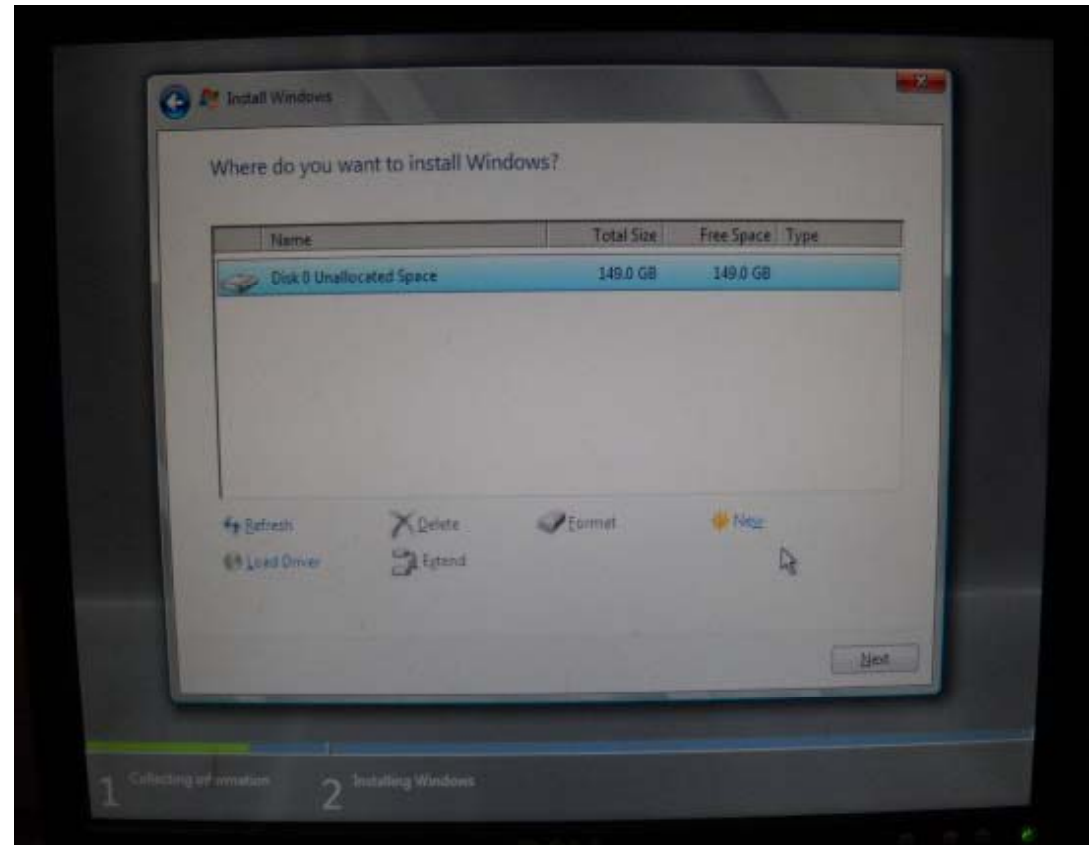
For our new server, we will select the custom (advanced) option to load a clean installation.



# Where to Install Windows

Now, we will choose the New hyperlink to remove any old partitions and prepare the new partition for the Server operating system.

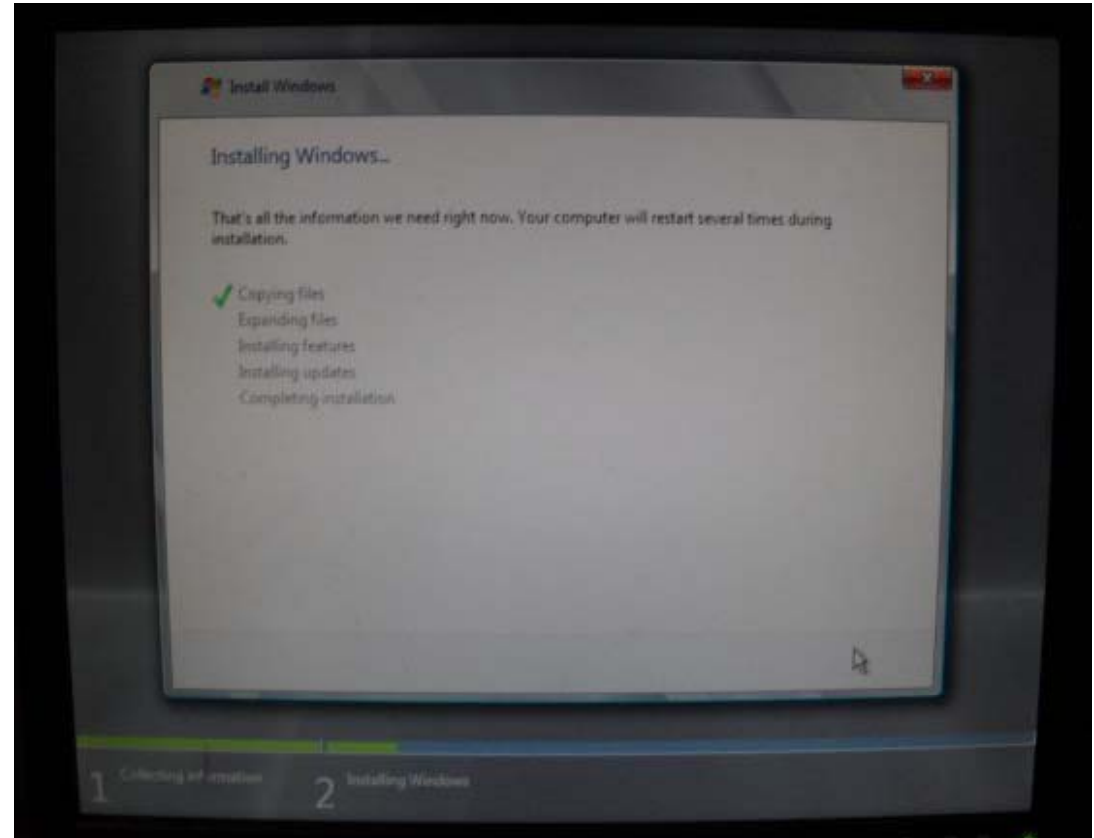
We can delete old operating systems and finally we can chose the Next button to install the Windows Server 2008 system.





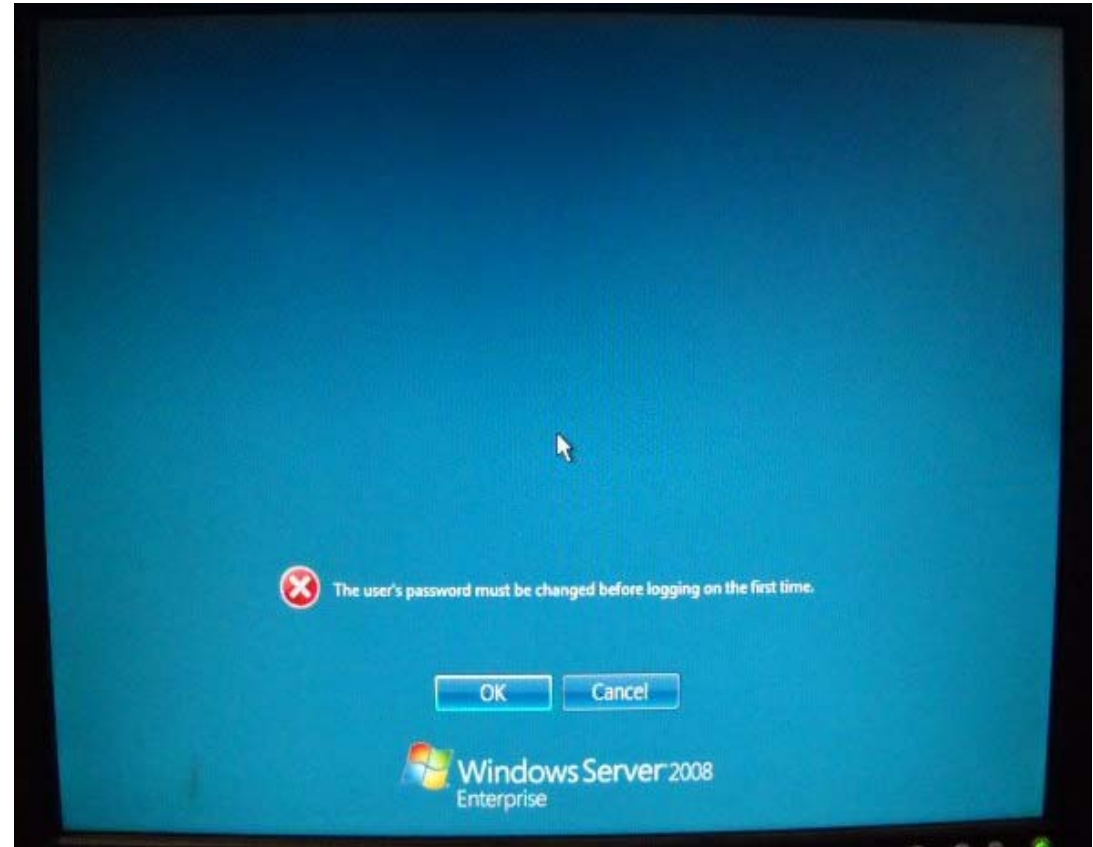
# Installing Windows

The next portion of the procedure is copying files, expanding files, installing features, installing updates, and completing installation. This will take several minutes.



# Setting the Password

We should press the OK command button to set the password.



# Administrator Password

Next, we have to assign and confirm a password for the Administrator account. The secret phrase must meet the smart password criteria.

Smart passwords have at least one number, upper and lower case letter and a special character. The password should be at least six characters long.



# Password Has Been Changed

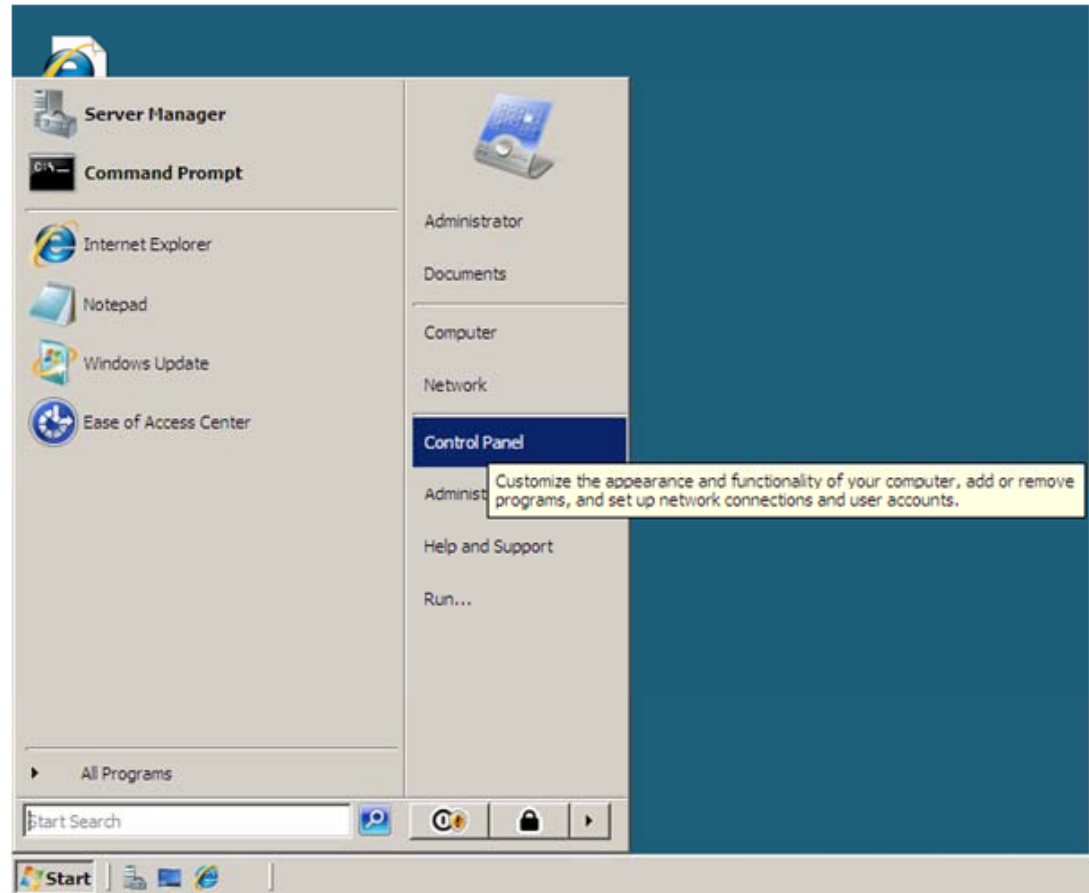
After the password has been changed, we press the OK button to advance.



# Windows is Now Loaded

We now need to setup the Network Interface Cards and connect to the Internet to install Service Packs and Windows Updates.

We will learn about setting up NICs and more in the next lessons.



# Windows is Now Loaded

1. A computer needs what hardware for a typical Windows Server 2008 load?
2. When installing a Windows Server 2008 from a DVD for the first time, we should choose \_\_\_\_\_ from the Install Windows dialogue box.
3. What should we do after installing a new copy of Windows Server 2008?
4. What file format should we pick for Windows Server 2008?
5. Administrator passwords need what four unique types of characters?
6. What is the default language, currency, time and keyboard?
7. What three letters designate 64 bit computers in the Windows Server 2008 setup?
8. What three letters designate 32 bit computers in the Windows Server 2008 setup?
9. In the longest portion of the Windows Server 2008 installation, what five items are being configured?
10. What are the four editions of Windows Server 2008?