

# Installing Windows Deployment Service (WDS) on a 2008 Server

June 10, 2011

# Why Remote Installation?

In previous lessons, we manually placed the Windows disc in the CD ROM player and manually installed the operating system.

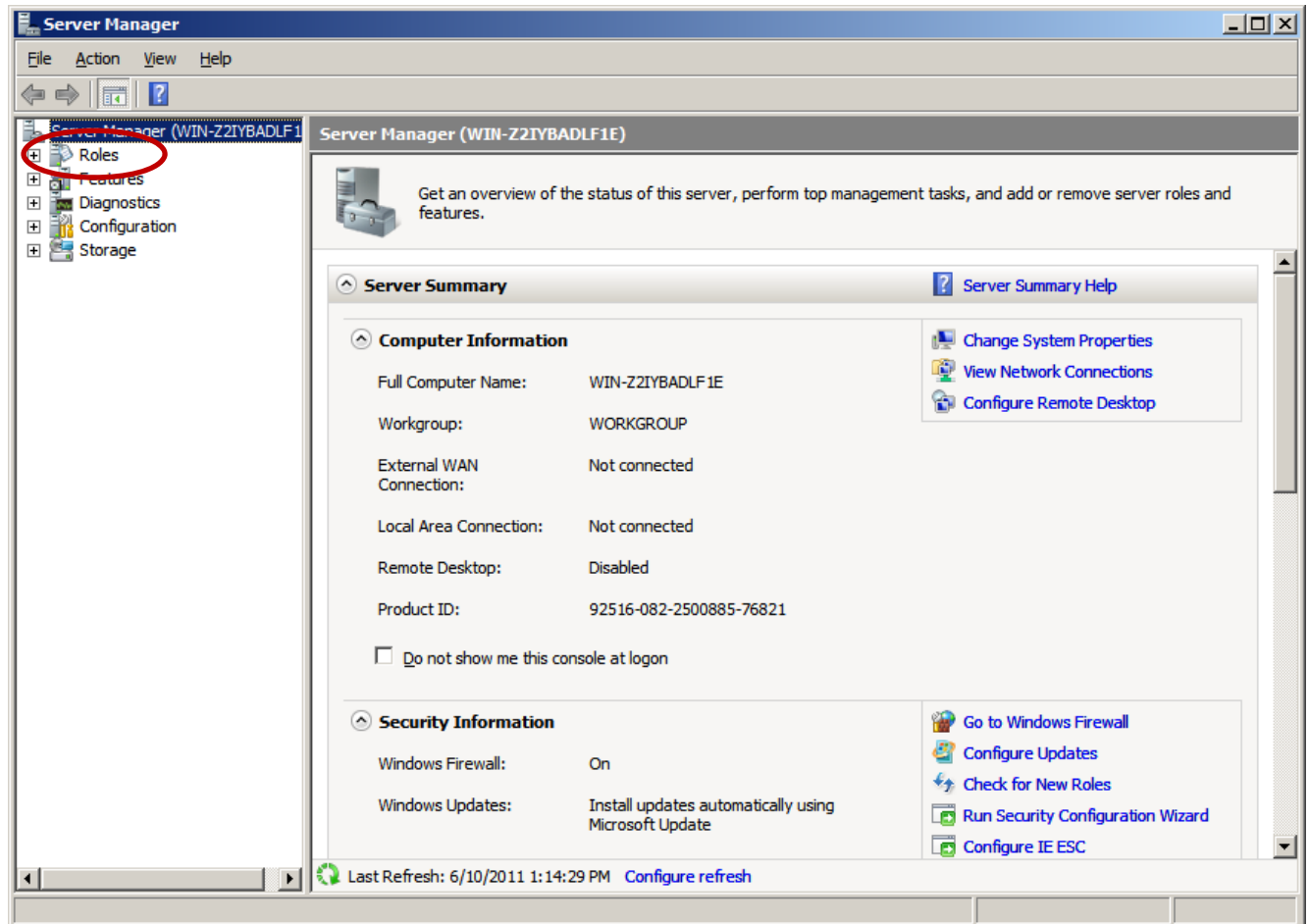
This is the beginning of a process to add another valuable server, the Remote Installation Server (RIS) to our list of machines to build and deploy.

To accomplish this task, we will load the Windows Deployment Services (WDS).



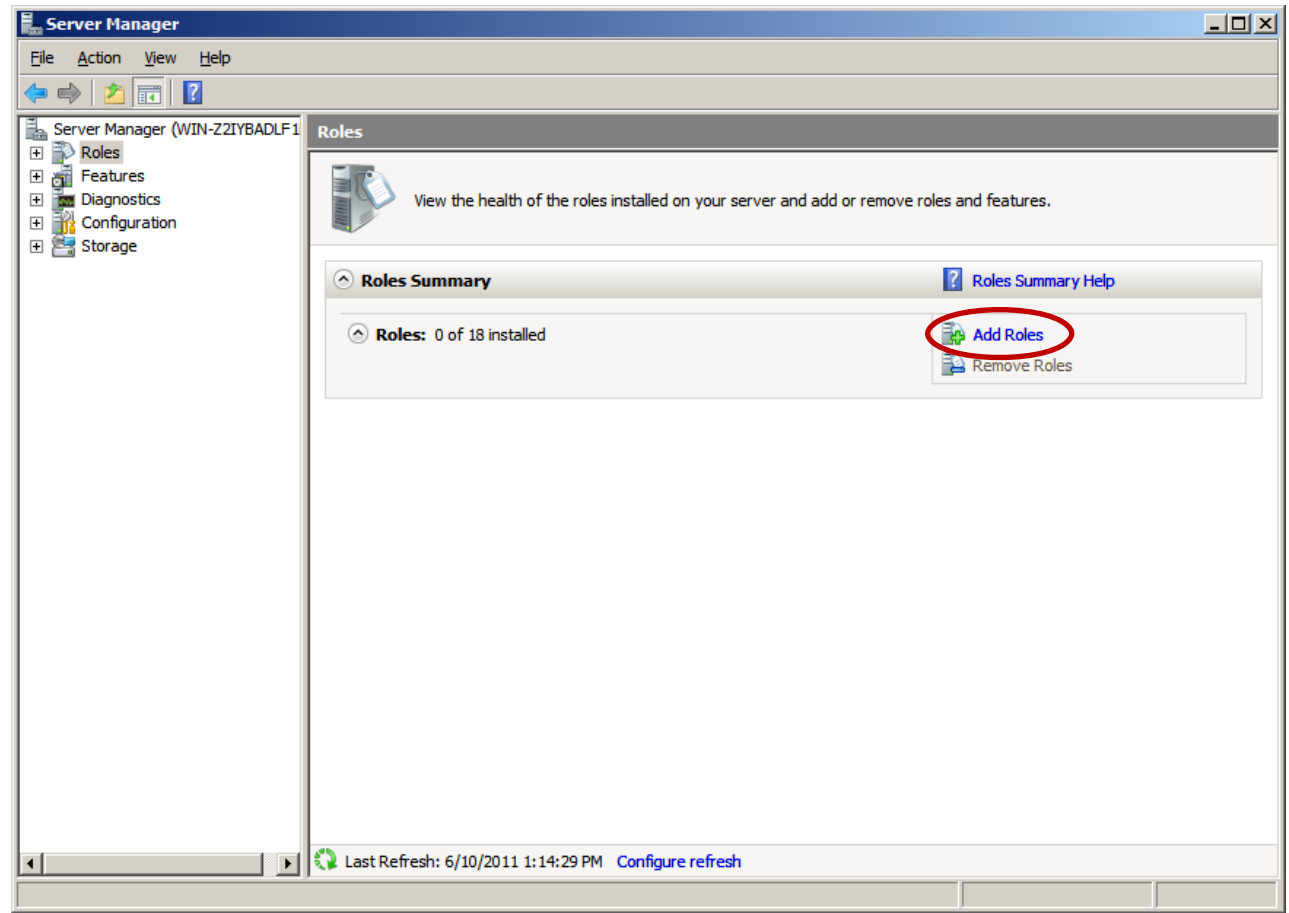
# Open the Server Manager

We go to the Start Menu and we open the Server Manager and we pick Roles from the list of on the left pane of the Server Manager window.



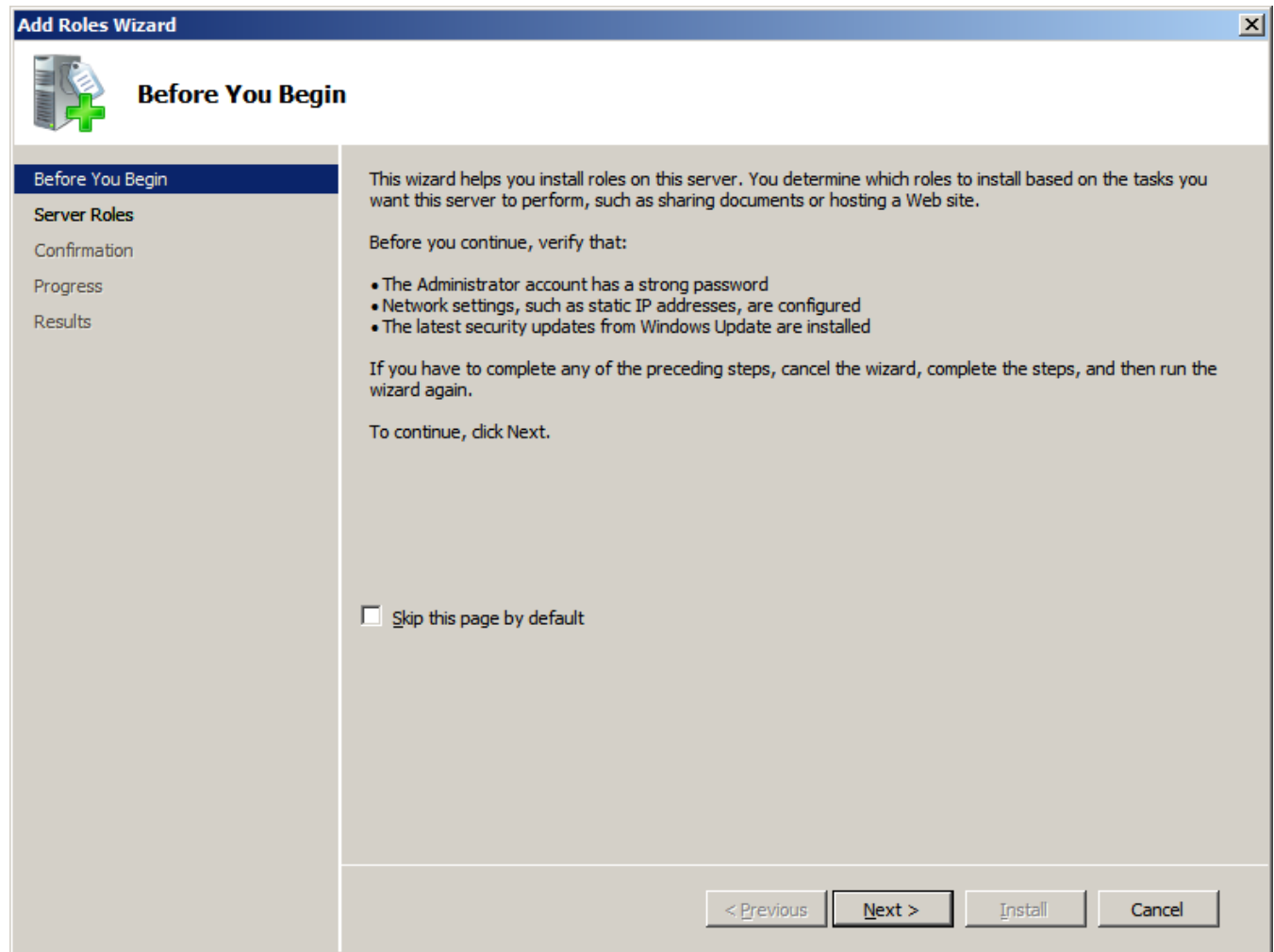
# The Server Roles

On this Windows 2008 Server, we do not have any assigned roles yet, since the machine will specifically be used as the Windows Deployment Server, we will setup the Windows Deployment Services by selecting Add Roles.



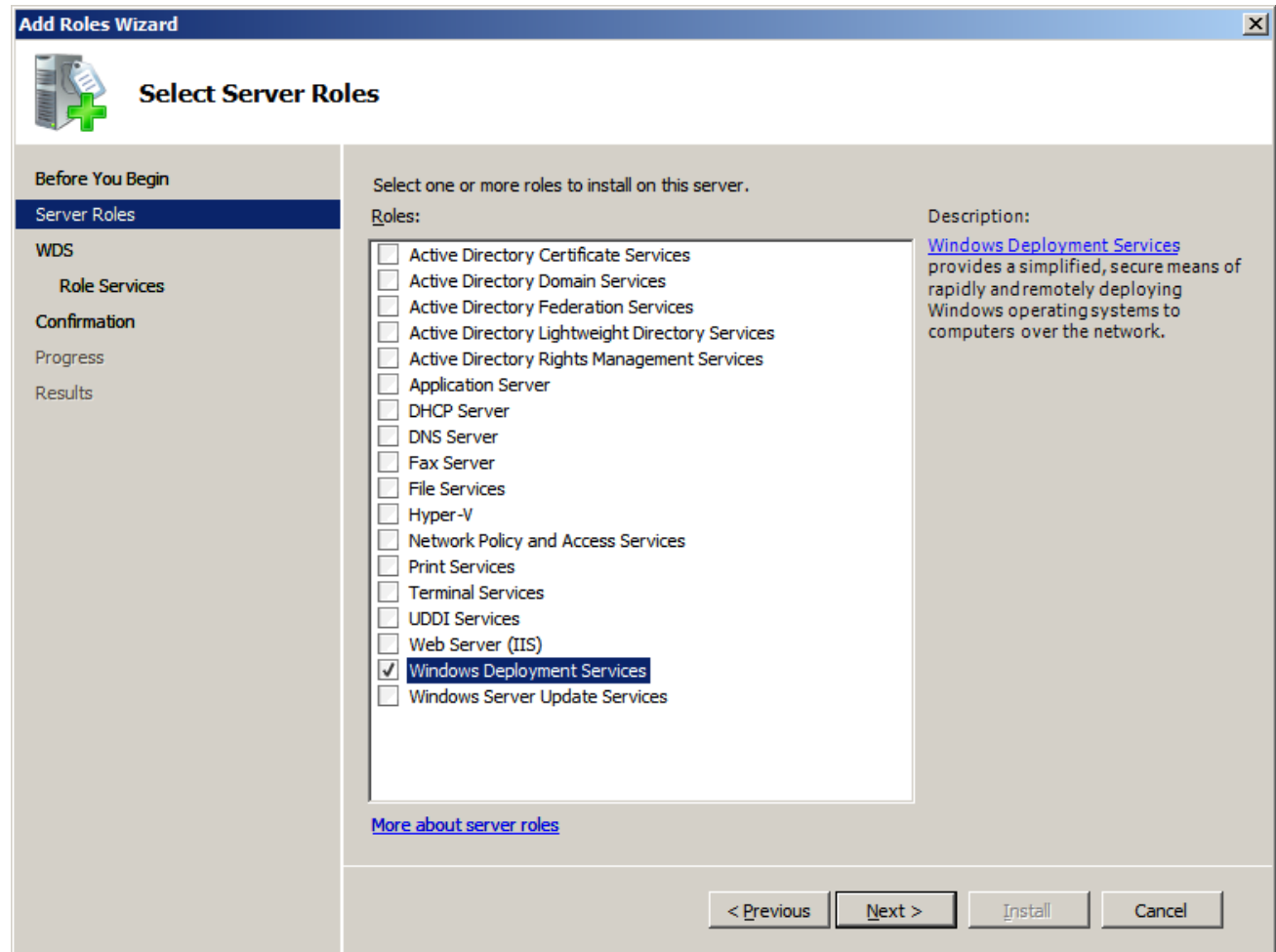
# Before You Begin

Before we begin, we should make our administrator logon a smart password. Our server should have a static IP address and all of the Windows Updates should be loaded.



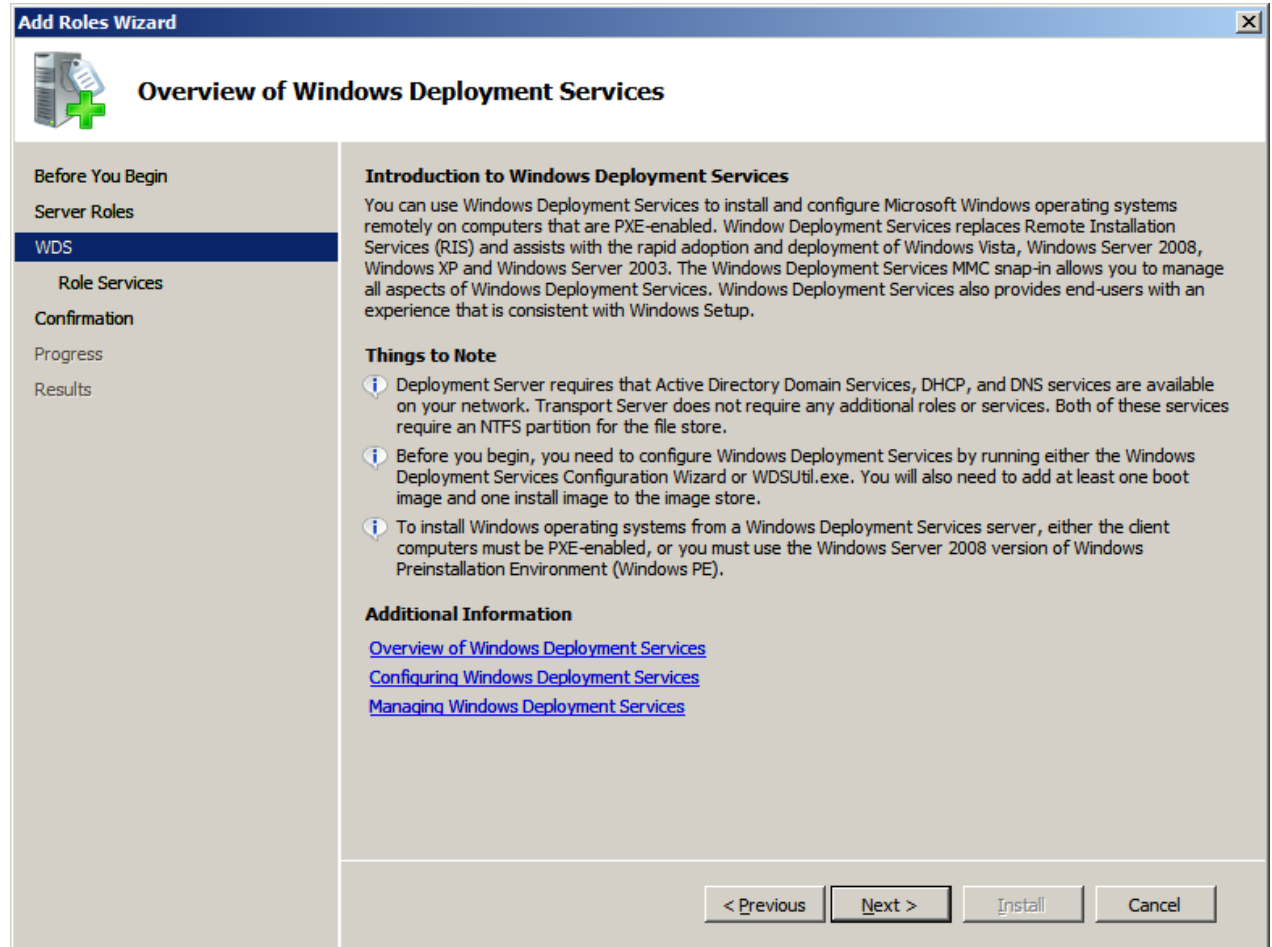
# Select a Server Role

Our Windows 2008 Domain Controller is on another machine, so we will just select the Windows Deployment Services checkbox.



# Introduction to WDS

There are several items to note for this server. Deployment Services require an Active Directory Domain Controller (DC), with DHCP and DNS services on the network. Our DC is the DNS server and has DHCP configured. We could make the Remote Installation Server a DHCP server and have the DC authorize it. We press Next to advance.



The screenshot shows the 'Add Roles Wizard' window with the title 'Overview of Windows Deployment Services'. The left sidebar contains a list of steps: 'Before You Begin', 'Server Roles', 'WDS' (highlighted), 'Role Services', 'Confirmation', 'Progress', and 'Results'. The main content area is titled 'Introduction to Windows Deployment Services' and contains the following text:

You can use Windows Deployment Services to install and configure Microsoft Windows operating systems remotely on computers that are PXE-enabled. Windows Deployment Services replaces Remote Installation Services (RIS) and assists with the rapid adoption and deployment of Windows Vista, Windows Server 2008, Windows XP and Windows Server 2003. The Windows Deployment Services MMC snap-in allows you to manage all aspects of Windows Deployment Services. Windows Deployment Services also provides end-users with an experience that is consistent with Windows Setup.

**Things to Note**

- Deployment Server requires that Active Directory Domain Services, DHCP, and DNS services are available on your network. Transport Server does not require any additional roles or services. Both of these services require an NTFS partition for the file store.
- Before you begin, you need to configure Windows Deployment Services by running either the Windows Deployment Services Configuration Wizard or WDSUtil.exe. You will also need to add at least one boot image and one install image to the image store.
- To install Windows operating systems from a Windows Deployment Services server, either the client computers must be PXE-enabled, or you must use the Windows Server 2008 version of Windows Preinstallation Environment (Windows PE).

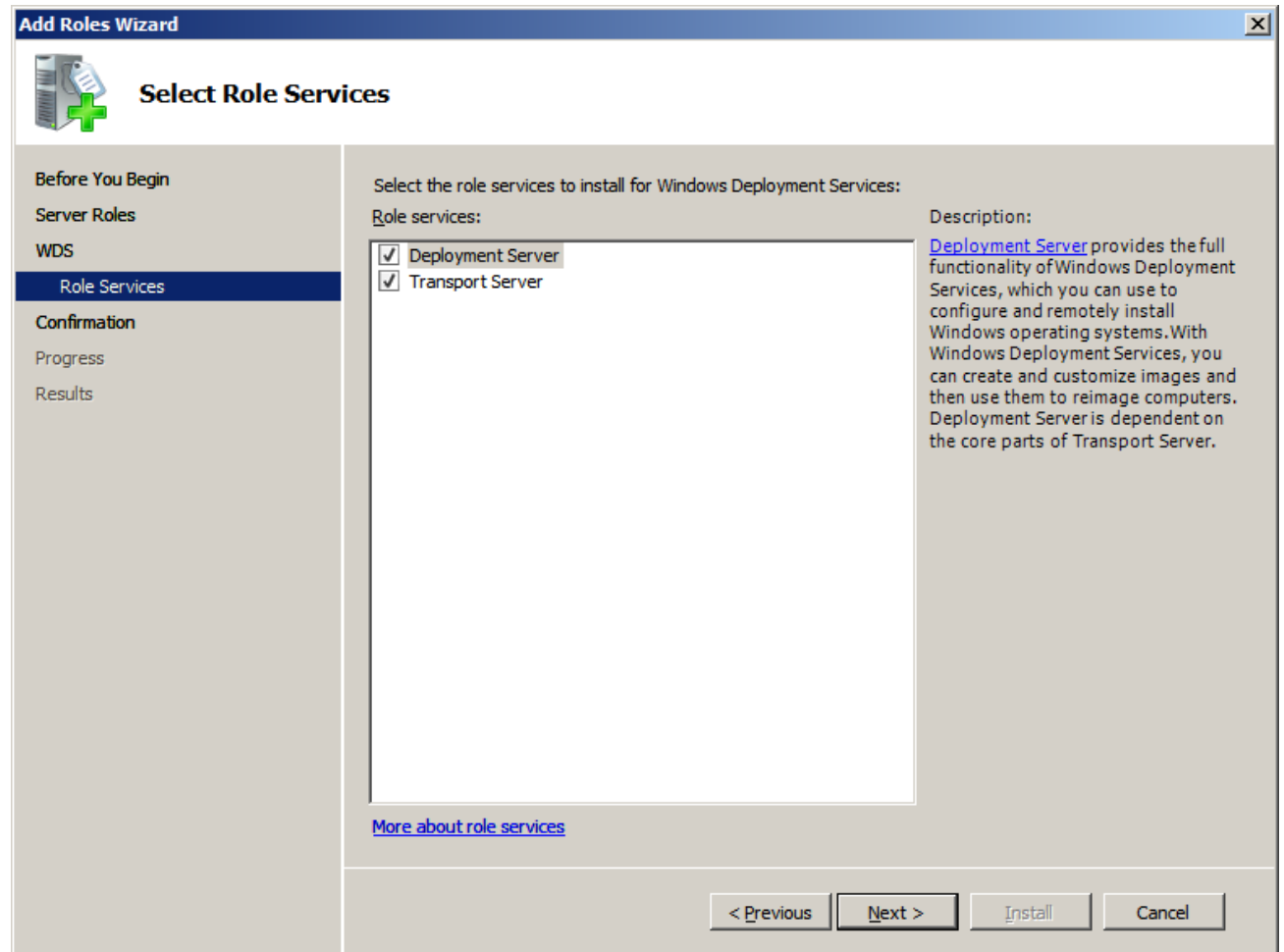
**Additional Information**

- [Overview of Windows Deployment Services](#)
- [Configuring Windows Deployment Services](#)
- [Managing Windows Deployment Services](#)

At the bottom of the window, there are four buttons: '< Previous', 'Next >', 'Install', and 'Cancel'.

# Select Roles Services

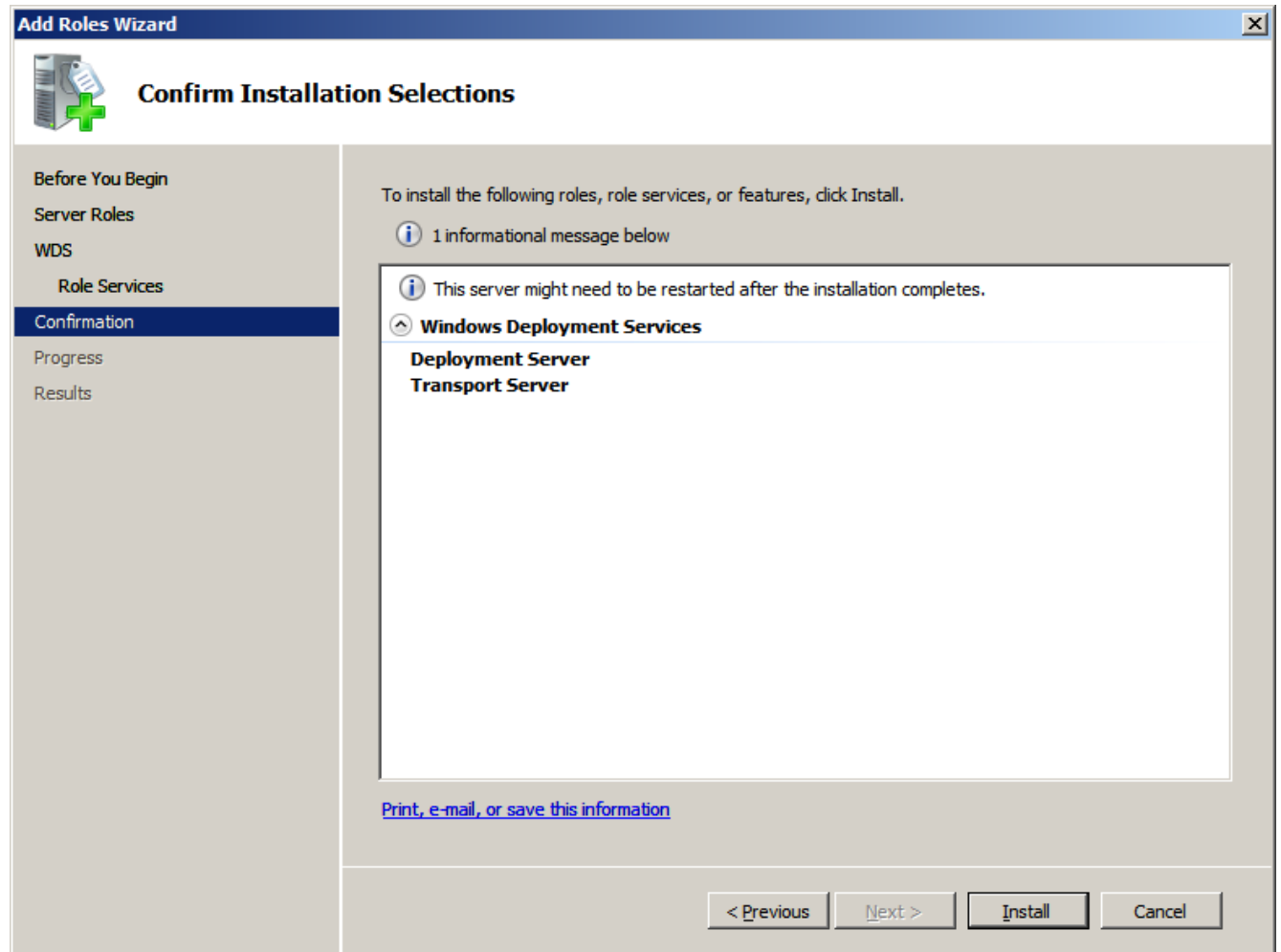
We will select both Deployment and Transport Server. The Deployment service is what we will utilize, but later we can train to use the Transport service to load an operating system without the Domain Controller with DHCP and DNS services.





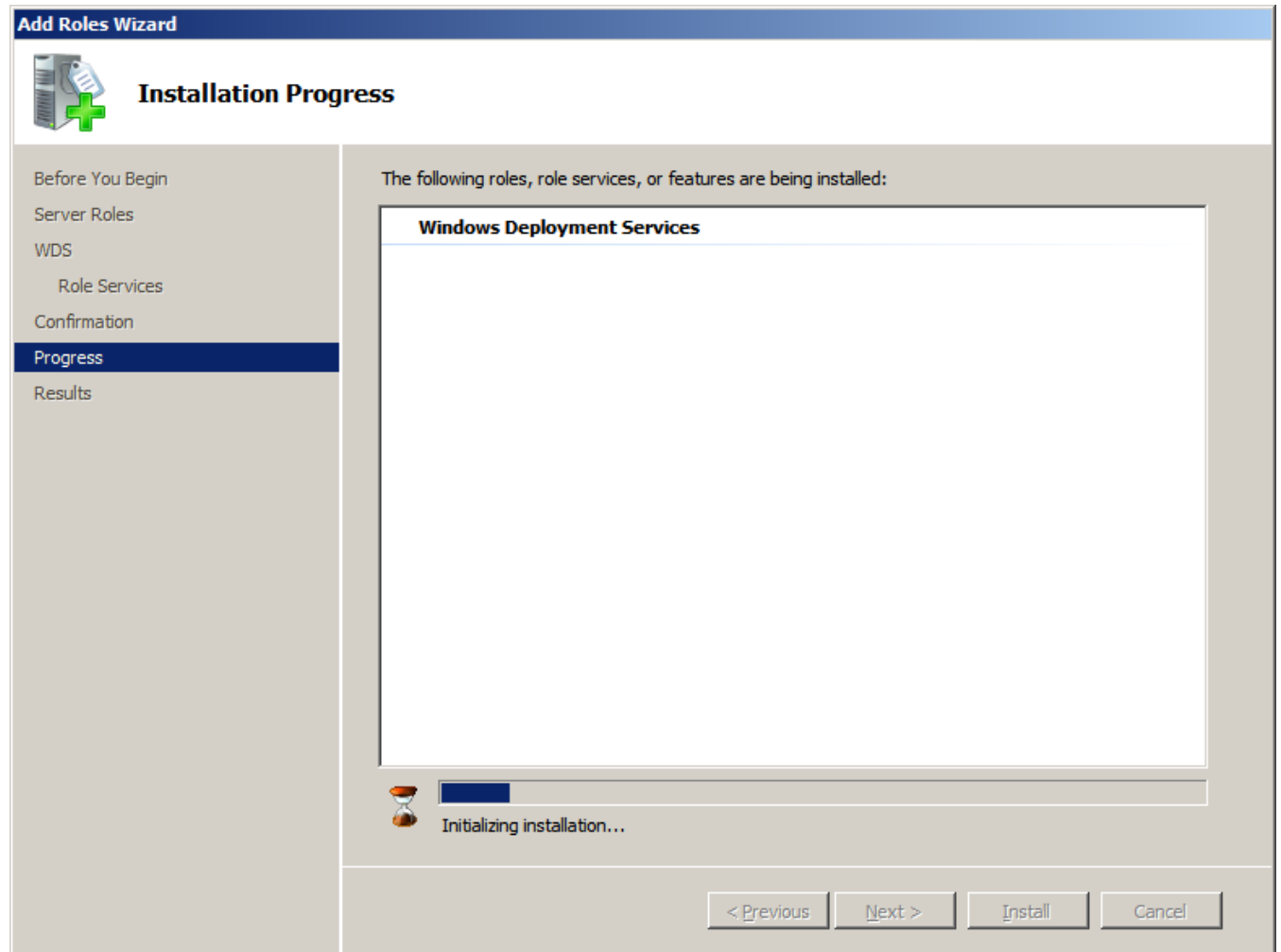
# Confirm Installation Selections

We will verify the features and then we will press the Install button to continue.



# Installation Progress

It will take several minutes to setup the server.



# Installation Results

The Windows 2008 Server is now a Remote Installation Server with both Deployment and Transport Services. In our next lesson, we will install a Windows 7 image on the server.

