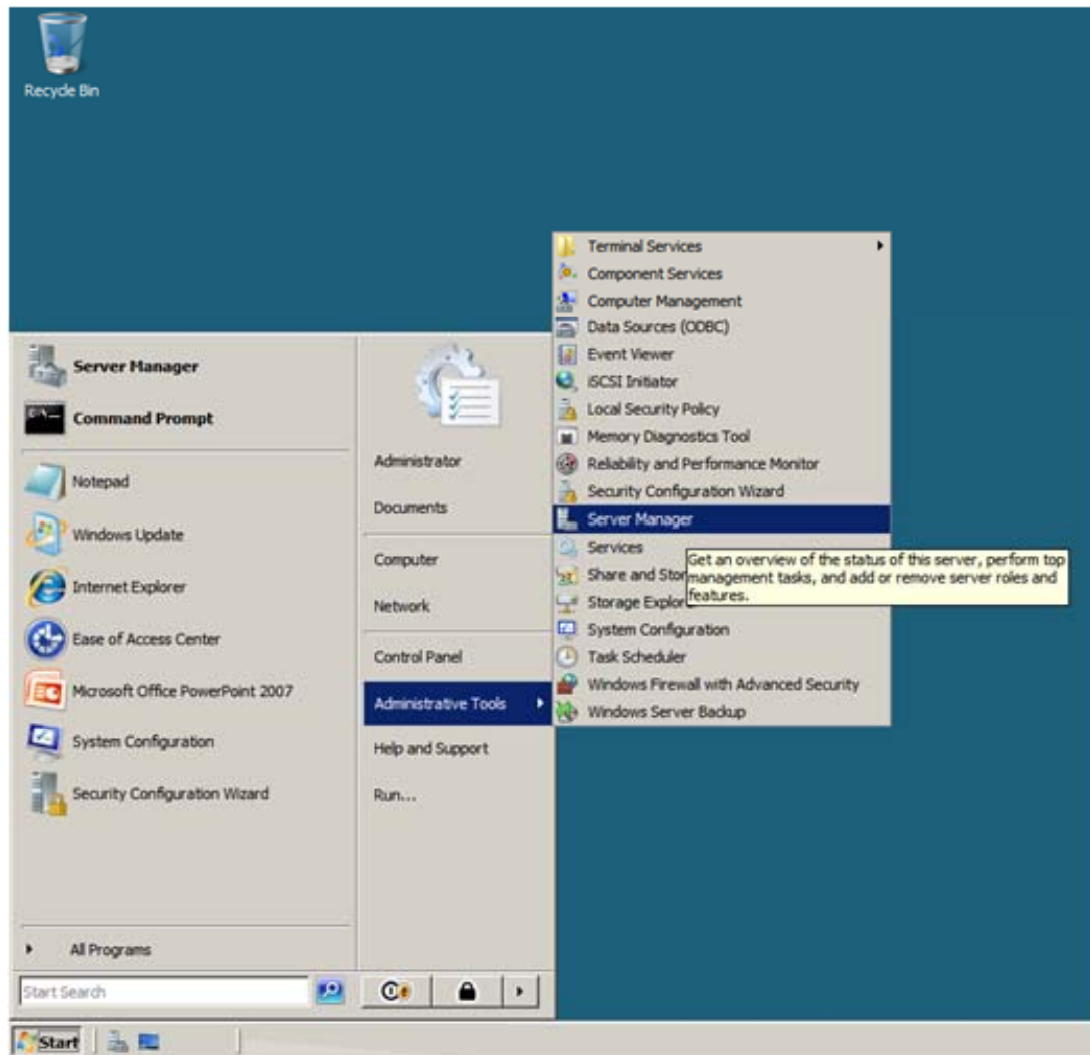


Installing Active Directory on a Windows 2008 Server

May 14, 2012

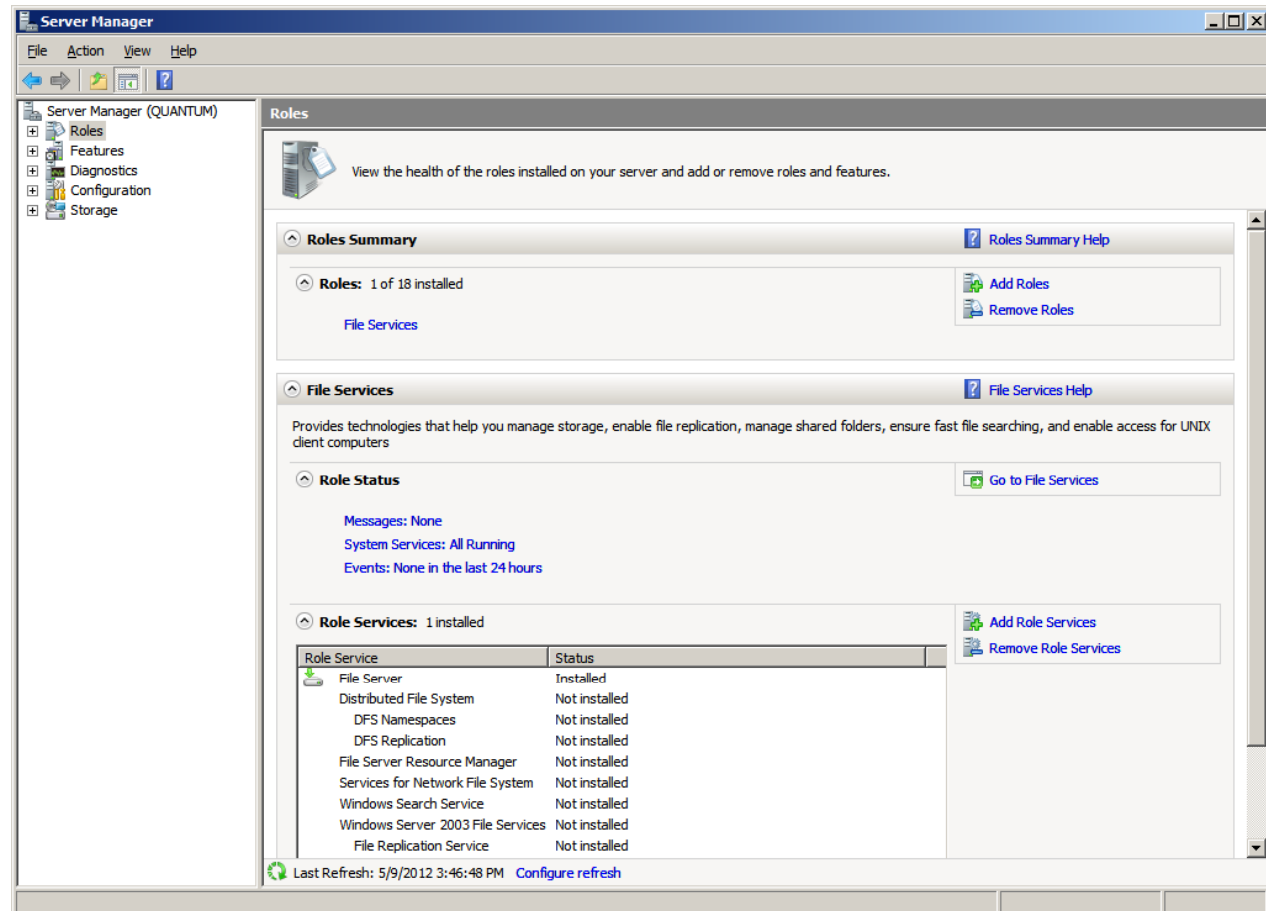
Server 2008 Desktop

To start the process of making a Domain Controller, we select the Start button to open the Start Menu. We choose Administrative Tools and then we pick Server Manager.



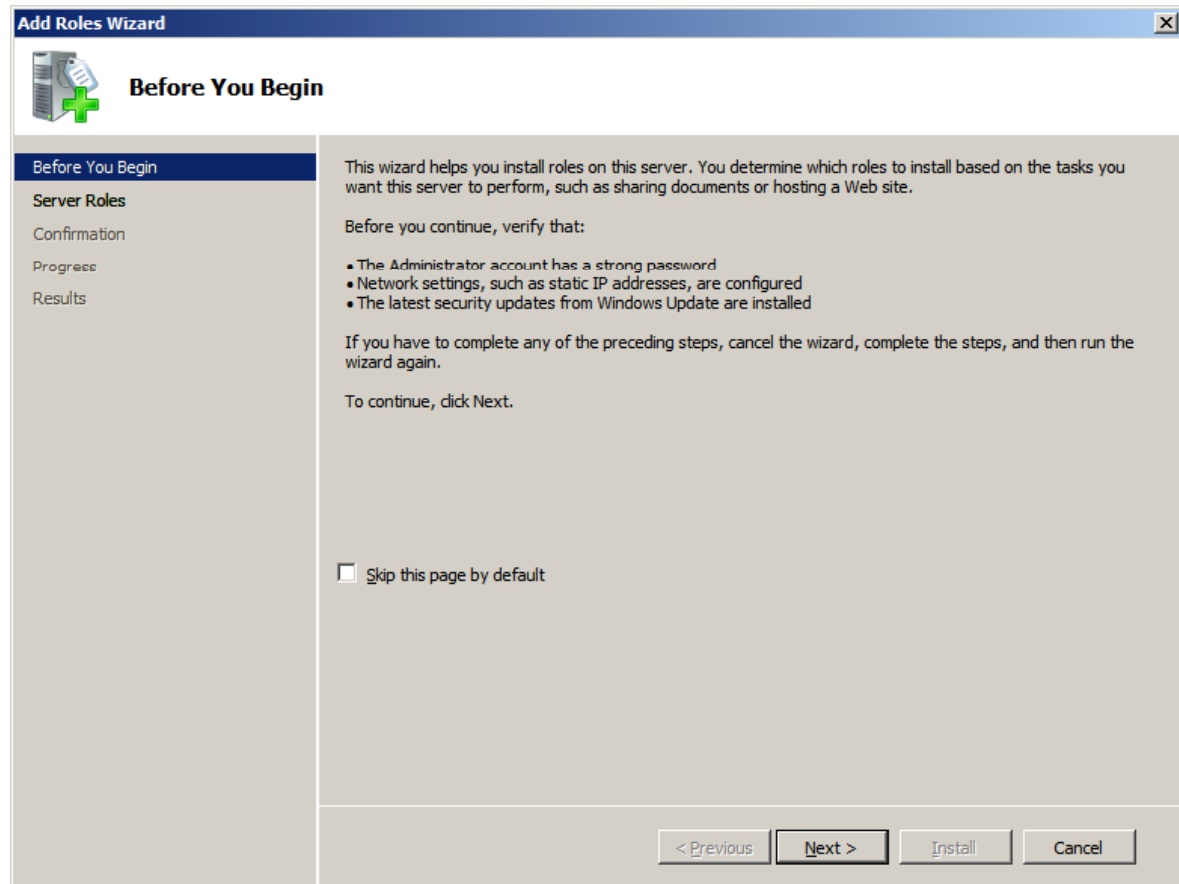
Server Manager

The Server Manager window will open. We highlight Roles in the left pane and select Add Roles in the right pane.



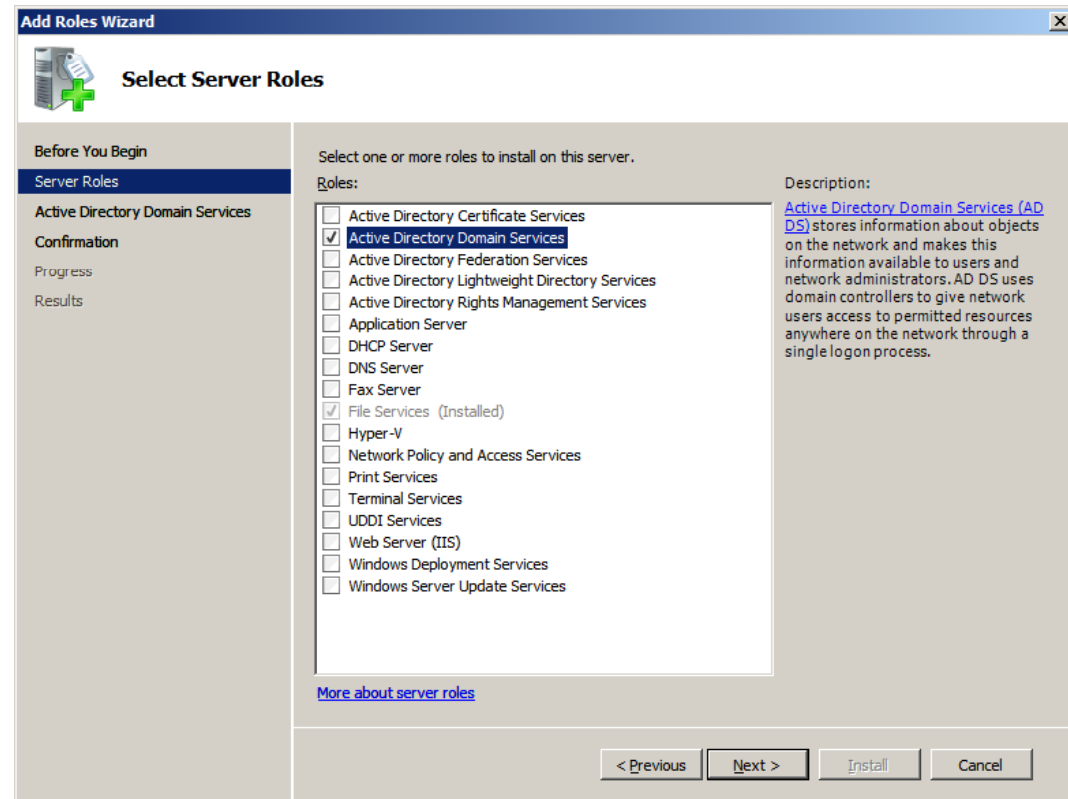
Before You Begin

Read the Before you Begin notes prior to adding a role and we have a better chance of successfully completing the installation.



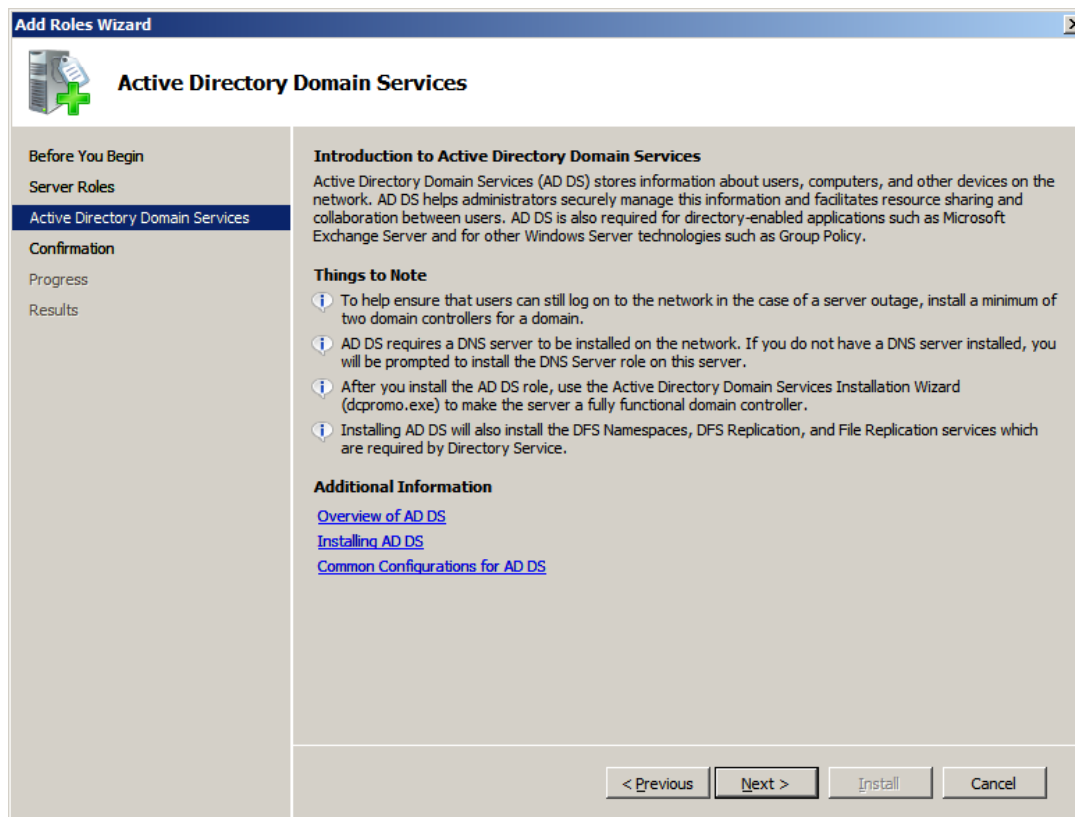
Select Server Role

The Add Roles Wizard window shows the multitude of functions a 2008 server can provide. We annotate the Active Directory Domain Services checkbox and press the Next button.



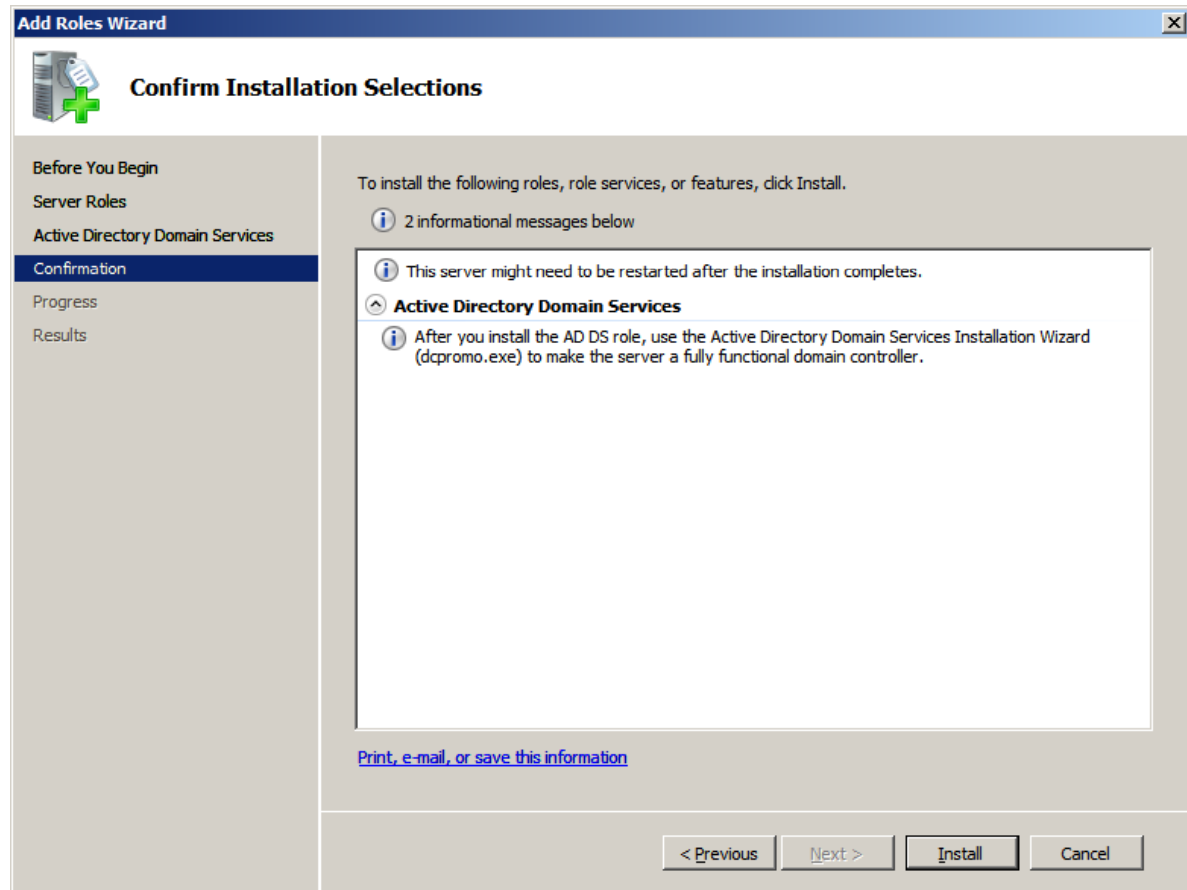
Active Directory Domain Services

The Active Directory Domain Services window will explain the DNS deployment and Active Directory. We press the Next button to continue.



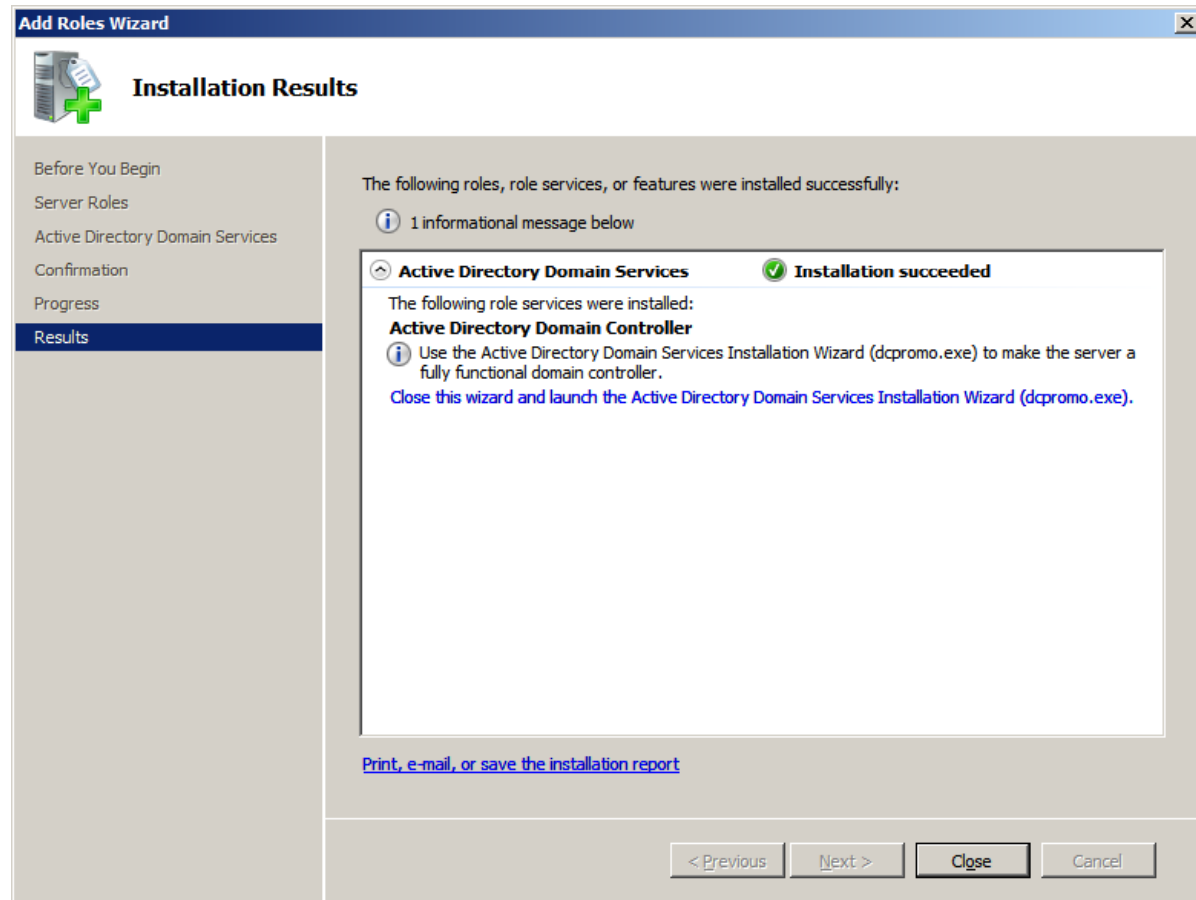
Confirm Installation Selections

We confirm that we want to set the machine up as a Active Directory Domain Services, so we pick the Install button to proceed.



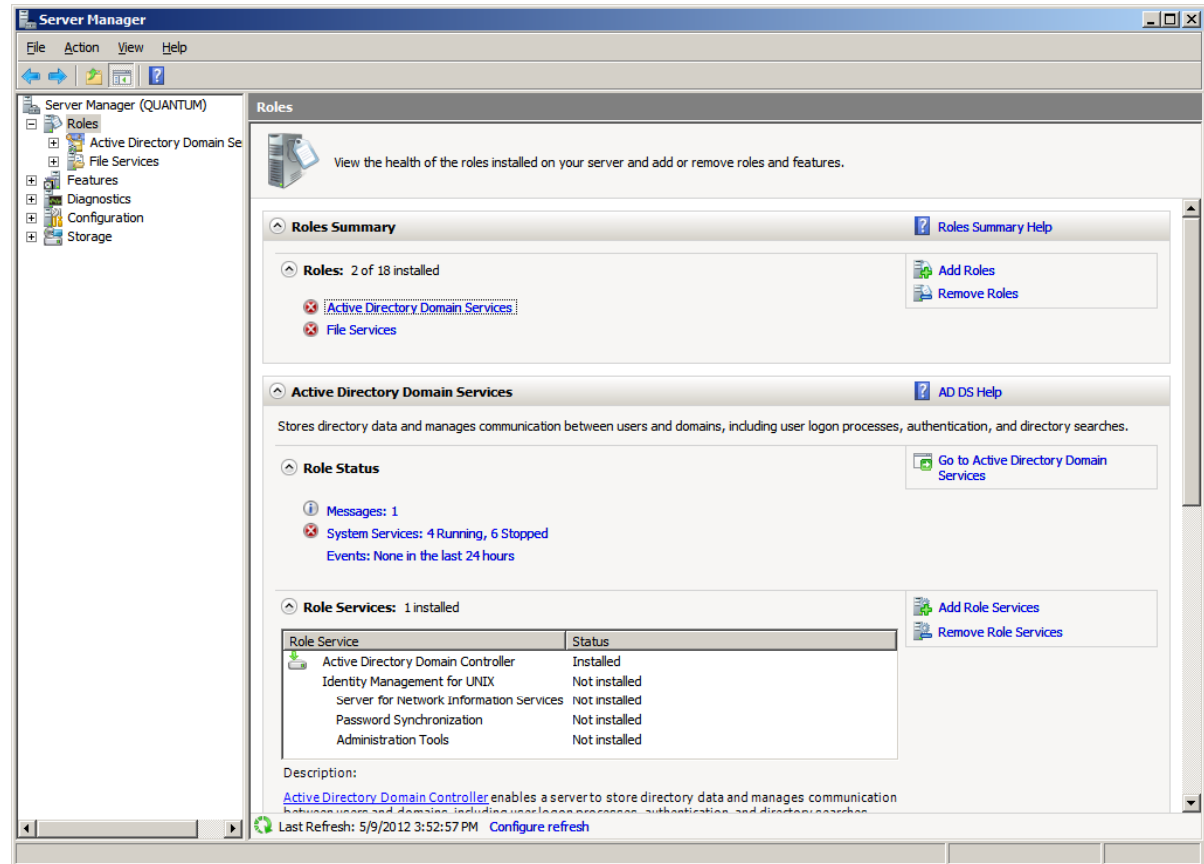
Installation Results

Finally, the server DNS installation is completed. We can close the window.



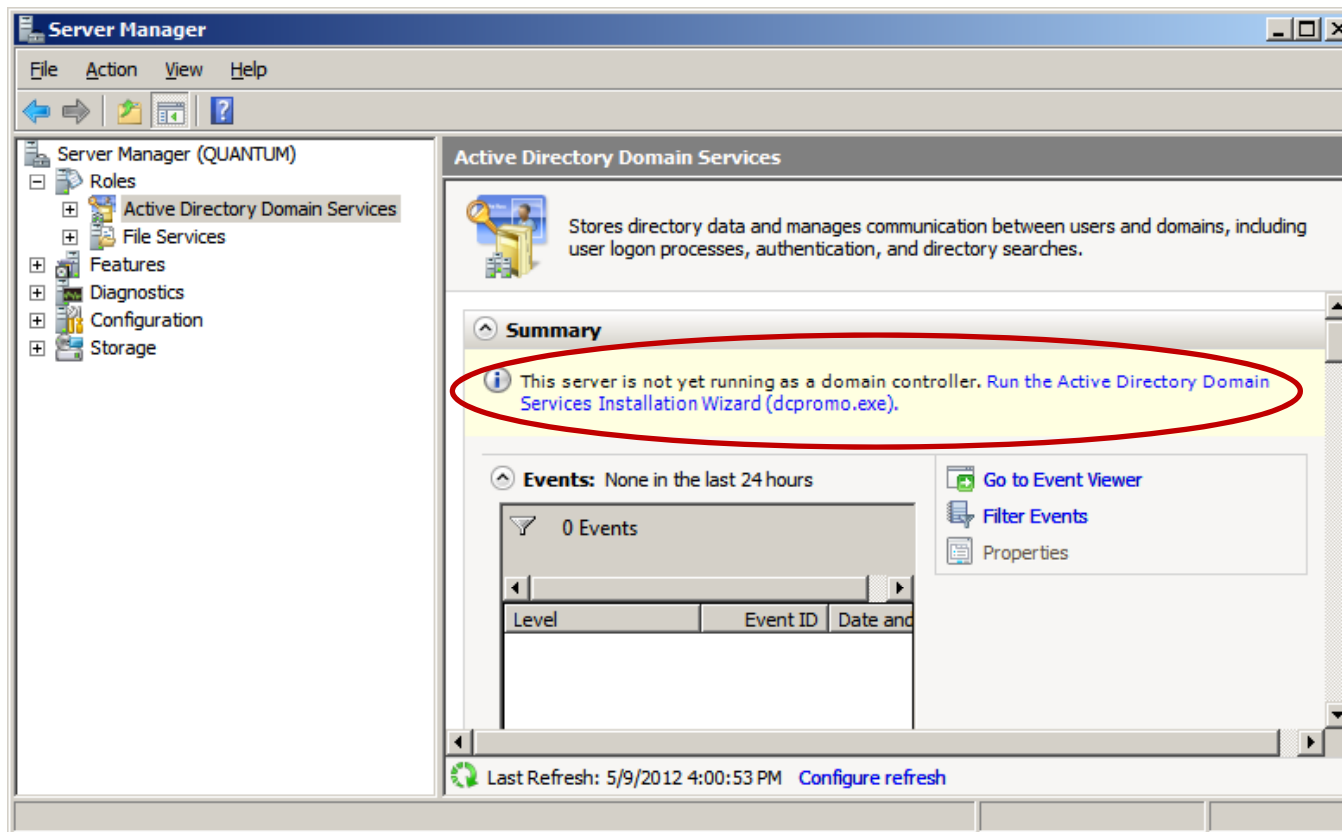
View Server Manager

Active Directory Domain Services is installed but is not running. We still need to run dcpromo and setup our DNS server. Double click on Active Directory Domain Services.



Run DCPromo

Double click on the blue hyperlink to launch dcpromo.



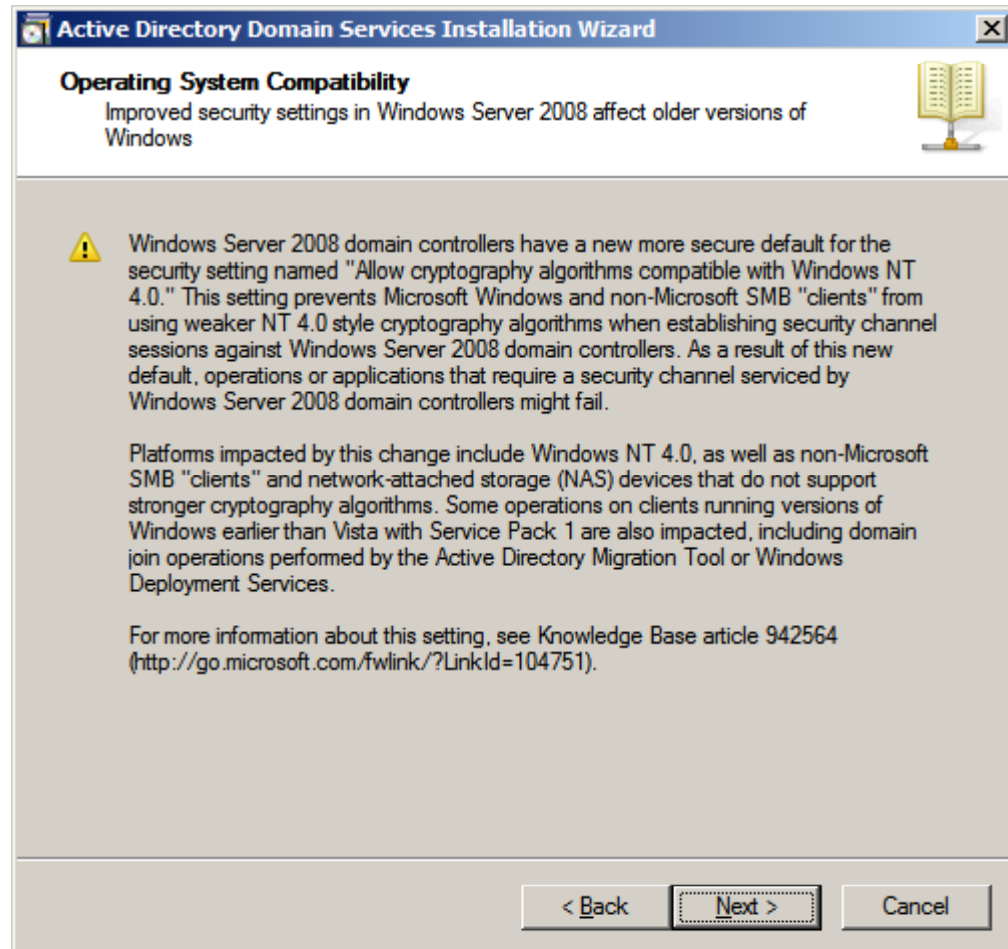
Welcome to ADDS Installation

We now begin the actual Active Directory Domain Services installation. Select Next to continue.



Operating System Compatibility

The next section of the Active Directory setup is to respond to prompts concerning compatibility issues. We press the Next button to advance.

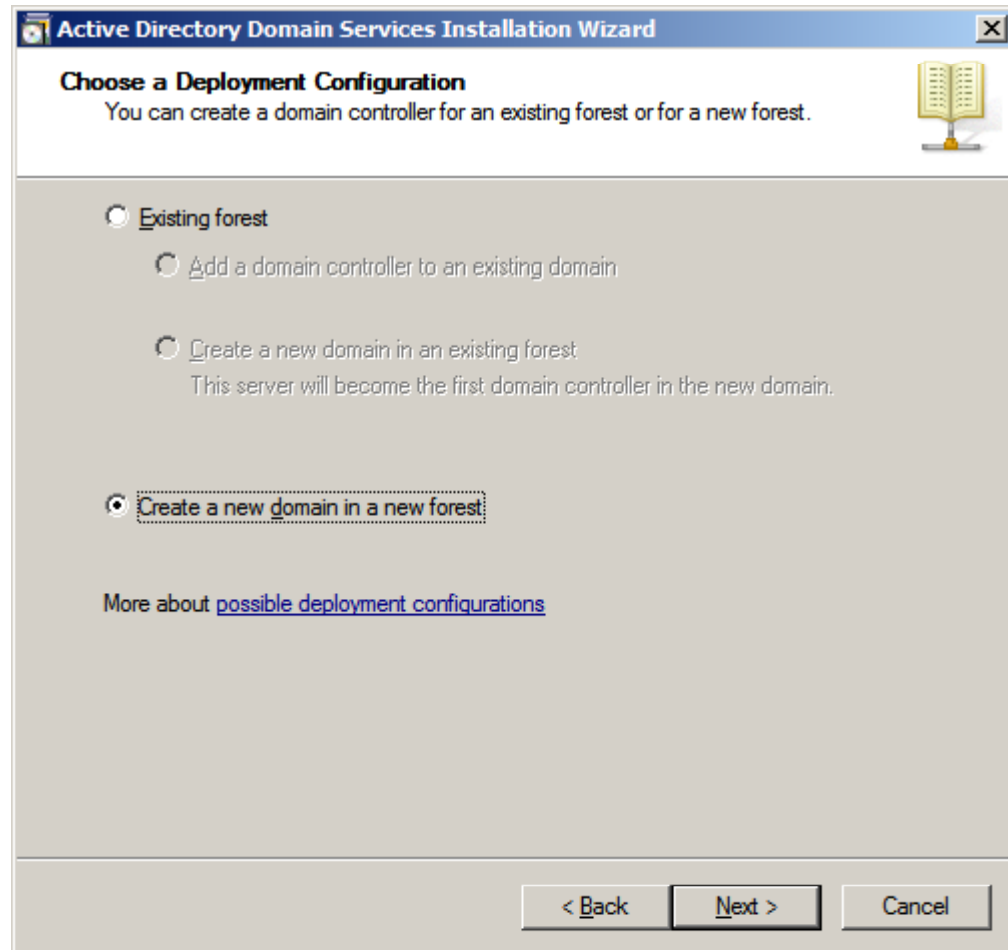


Deployment Configuration

We will select domain controller for a new domain. If this was going to be added to another existing domain, we would opt for joining an existing forest.

The add a domain controller to an existing domain will add another server to a tree. The new domain in a existing forest will begin a new tree.

We press the Next button to continue.



Name the Forest Root Domain

We type in our Fully Qualified Domain Name (FQDN) that we registered or we can type the domain name and .local for non registered names.

Active Directory Domain Services Installation Wizard

Name the Forest Root Domain
The first domain in the forest is the forest root domain. Its name is also the name of the forest.

Type the fully qualified domain name (FQDN) of the new forest root domain.

FQDN of the forest root domain:

Example: corp.contoso.com

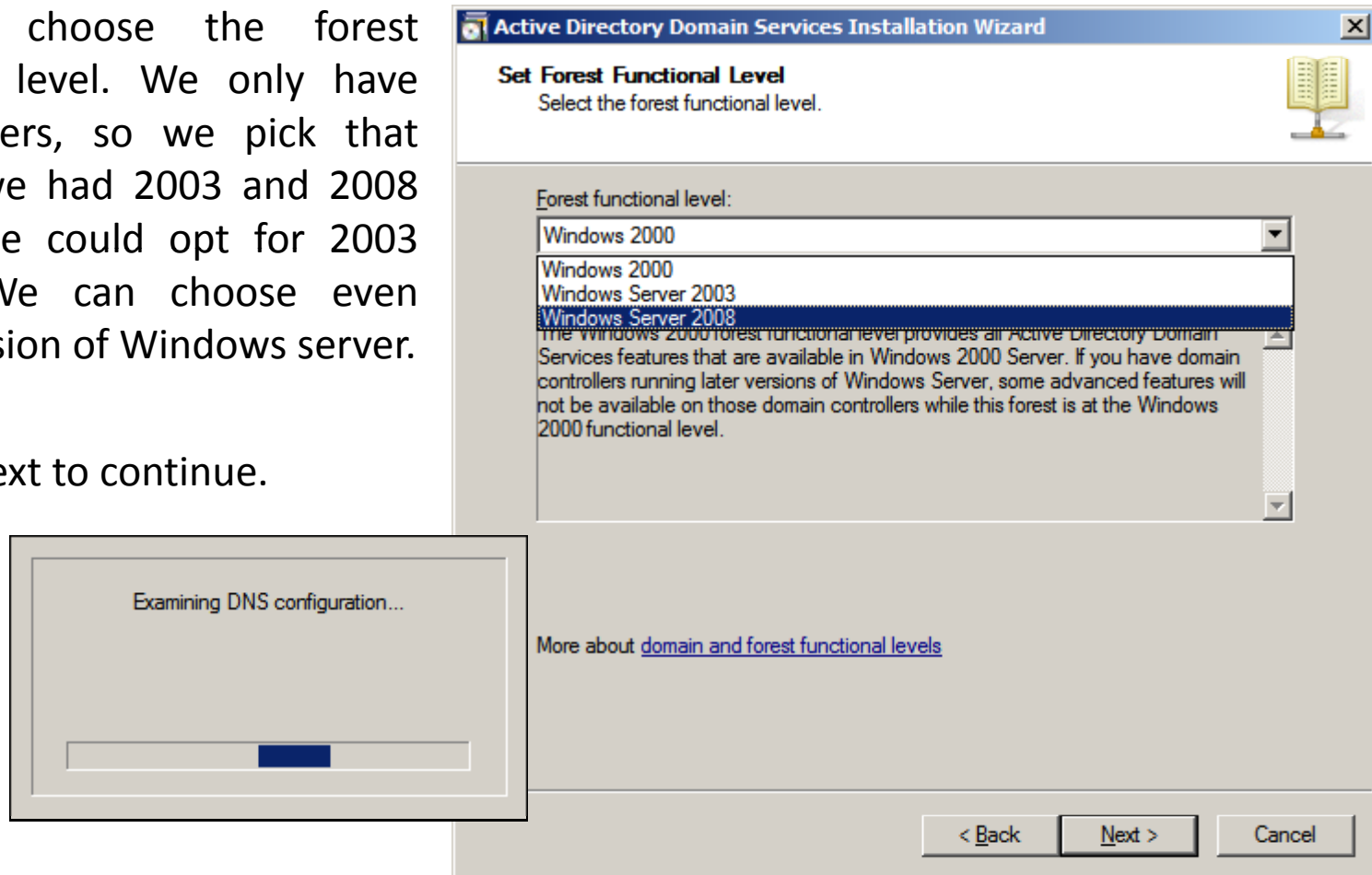
Checking whether the new forest name is already in use ...

< Back Next > Cancel

Forest Functional Level

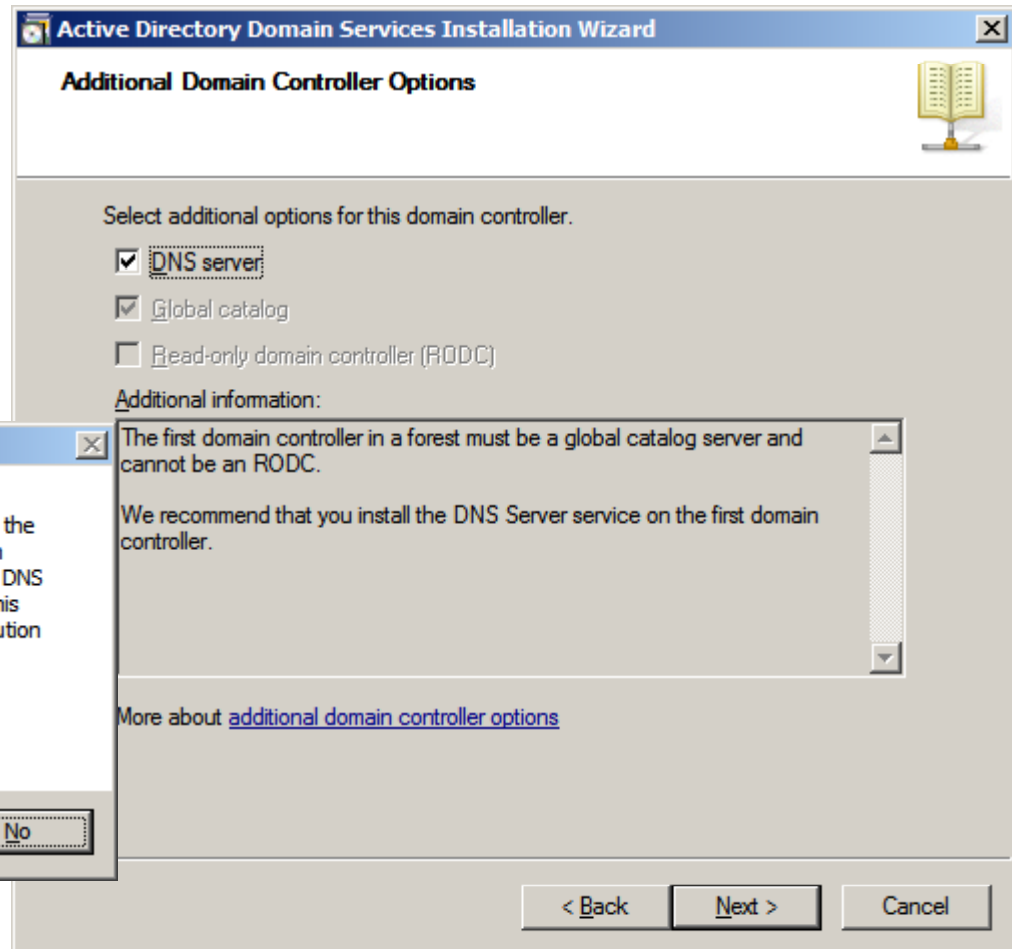
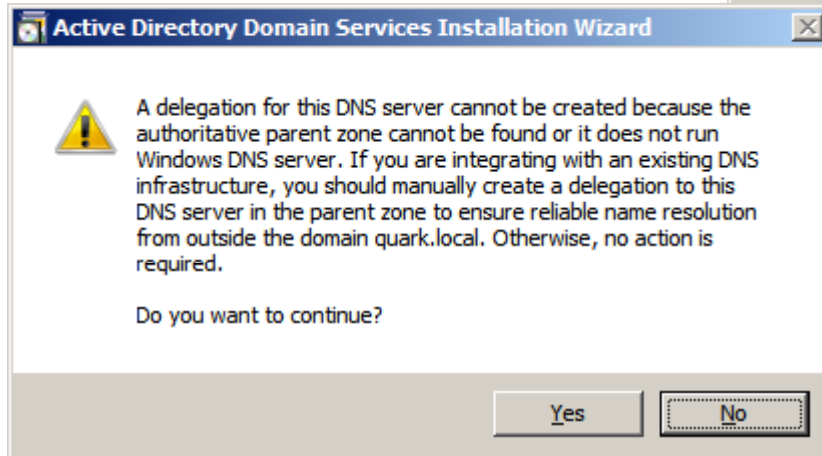
We can choose the forest functional level. We only have 2008 servers, so we pick that stage. If we had 2003 and 2008 servers, we could opt for 2003 servers. We can choose even earlier version of Windows server.

We pick Next to continue.



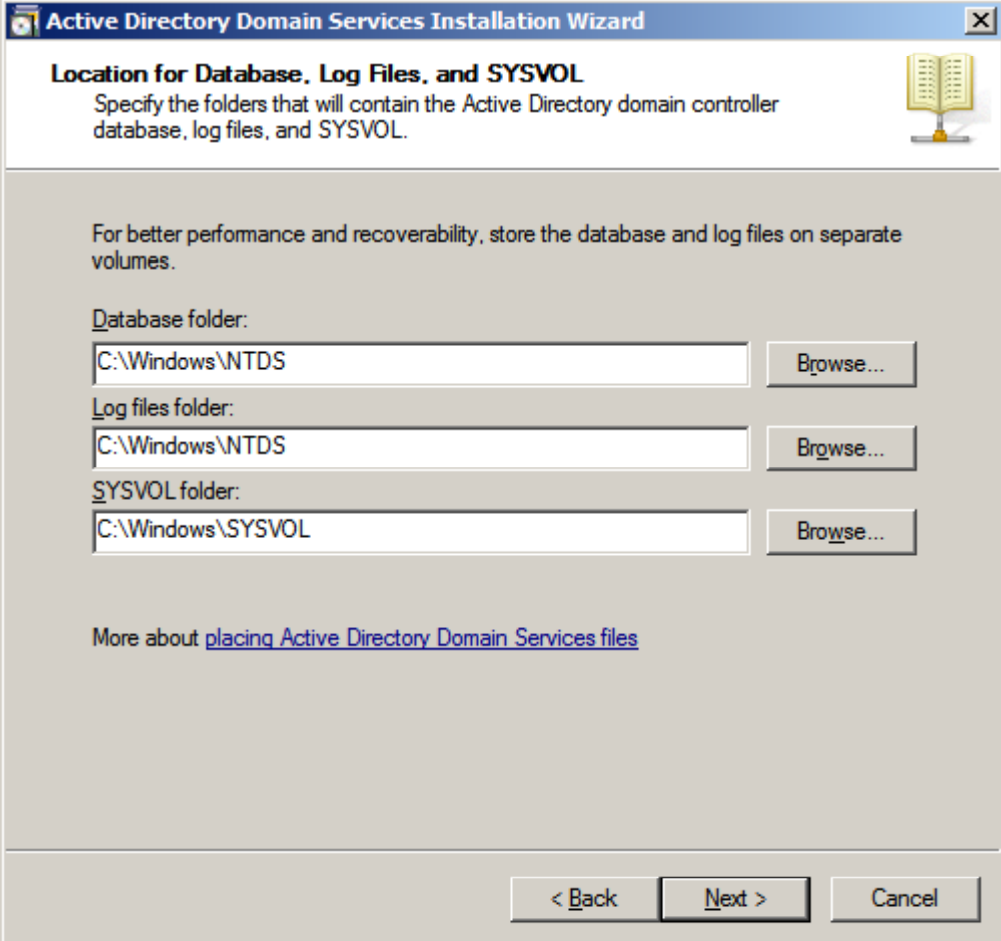
Annotating DNS Server

We already have the DNS server configured, so we will continue by pressing the Next button. The ISP delegation server might be a Linux computer and does not conform to the 2008 infrastructure. We will choose yes to advance.



Database, Log and SYSVOL Folders

We typically choose the database and log folder defaults. However, we can direct the database and log files to another folder. The next folder location is for the shared system volume. We will maintain the default path and pick the Next button to advance.

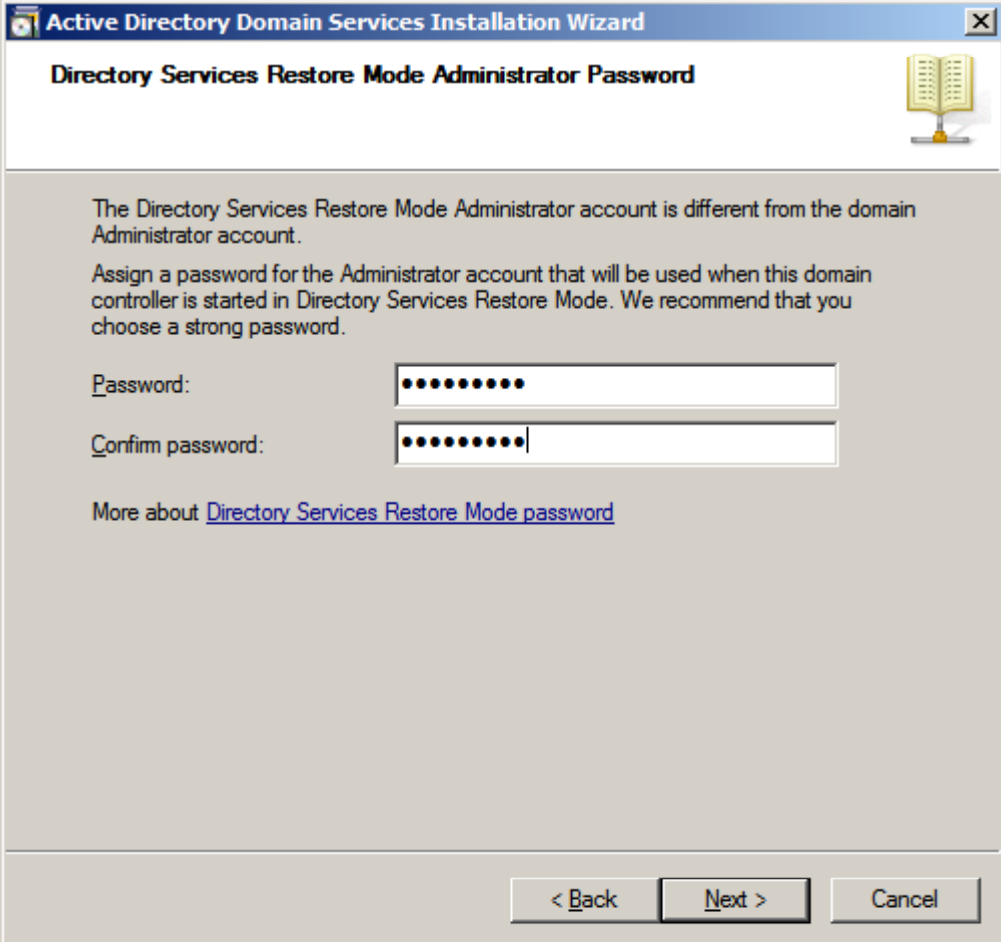


The screenshot shows the 'Active Directory Domain Services Installation Wizard' window. The title bar reads 'Active Directory Domain Services Installation Wizard'. The main heading is 'Location for Database, Log Files, and SYSVOL'. Below the heading, it says 'Specify the folders that will contain the Active Directory domain controller database, log files, and SYSVOL.' There is a small icon of a book on a stand to the right. The main area contains the following text: 'For better performance and recoverability, store the database and log files on separate volumes.' Below this, there are three rows of input fields, each with a 'Browse...' button to its right. The first row is labeled 'Database folder:' and contains 'C:\Windows\NTDS'. The second row is labeled 'Log files folder:' and contains 'C:\Windows\NTDS'. The third row is labeled 'SYSVOL folder:' and contains 'C:\Windows\SYSVOL'. At the bottom of the window, there are three buttons: '< Back', 'Next >', and 'Cancel'. A link at the bottom reads 'More about [placing Active Directory Domain Services files](#)'.

Administrative Password

We type and confirm the administrative password for the domain controller. The password should conform to the complexity requirement and minimum character length we will setup in the password policy.

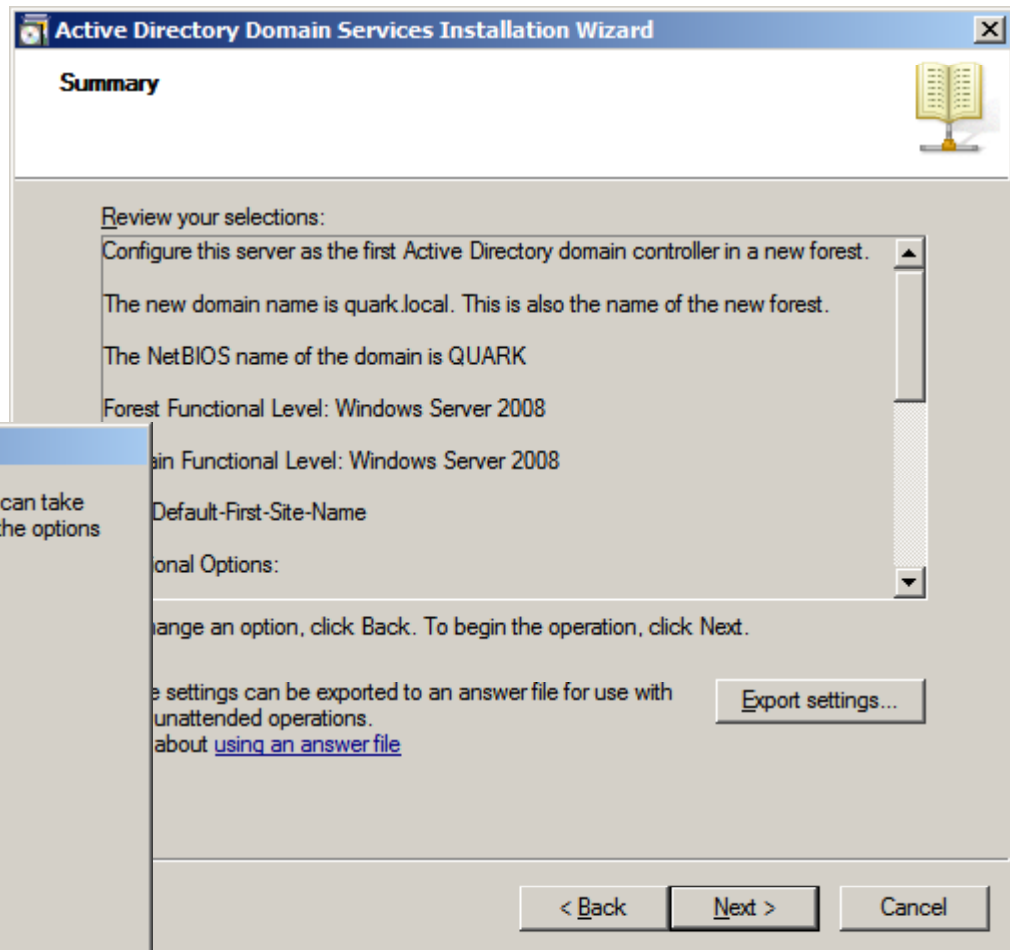
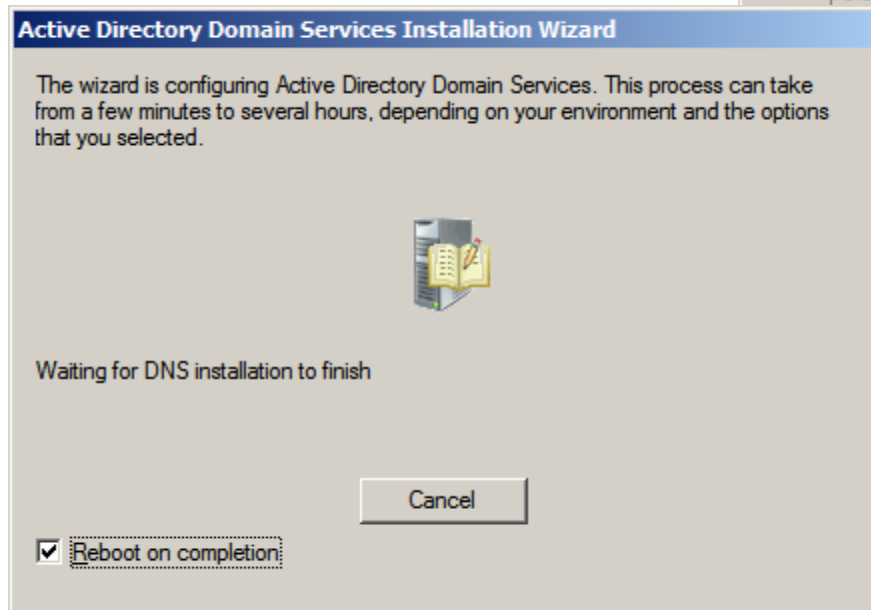
We opt for the Next button to proceed.



The screenshot shows a Windows dialog box titled "Active Directory Domain Services Installation Wizard" with a sub-title "Directory Services Restore Mode Administrator Password". The dialog contains the following text: "The Directory Services Restore Mode Administrator account is different from the domain Administrator account. Assign a password for the Administrator account that will be used when this domain controller is started in Directory Services Restore Mode. We recommend that you choose a strong password." Below this text are two input fields: "Password:" and "Confirm password:", both containing masked characters (dots). At the bottom of the dialog, there are three buttons: "< Back", "Next >", and "Cancel". A small icon of an open book is visible in the top right corner of the dialog.

Summary

We now see a summary of the choices we made with the Active Directory Installation Wizard. If we need to change anything we can go back to the particular window and make the change and advance back to this point.



Domain Controller Setup

We can see the quark.local Domain Controller on the Network and Sharing window is connected to the Internet.

Next, we will complete the DNS server setup and install RRAS so we can have an Internet connection for the client computers.

