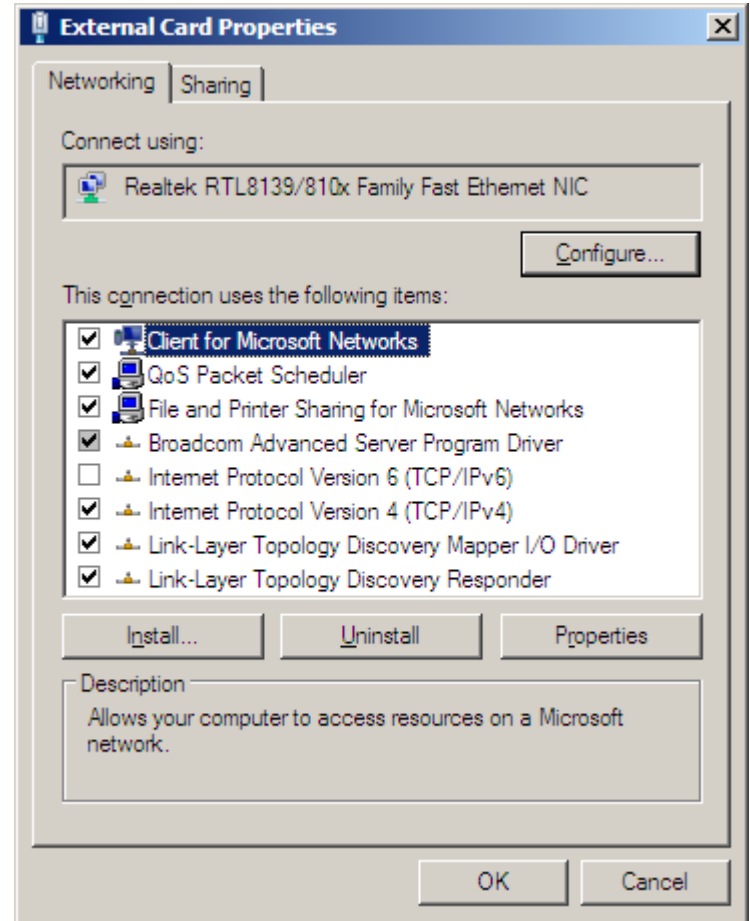


Disabling IPv6

September 2, 2011

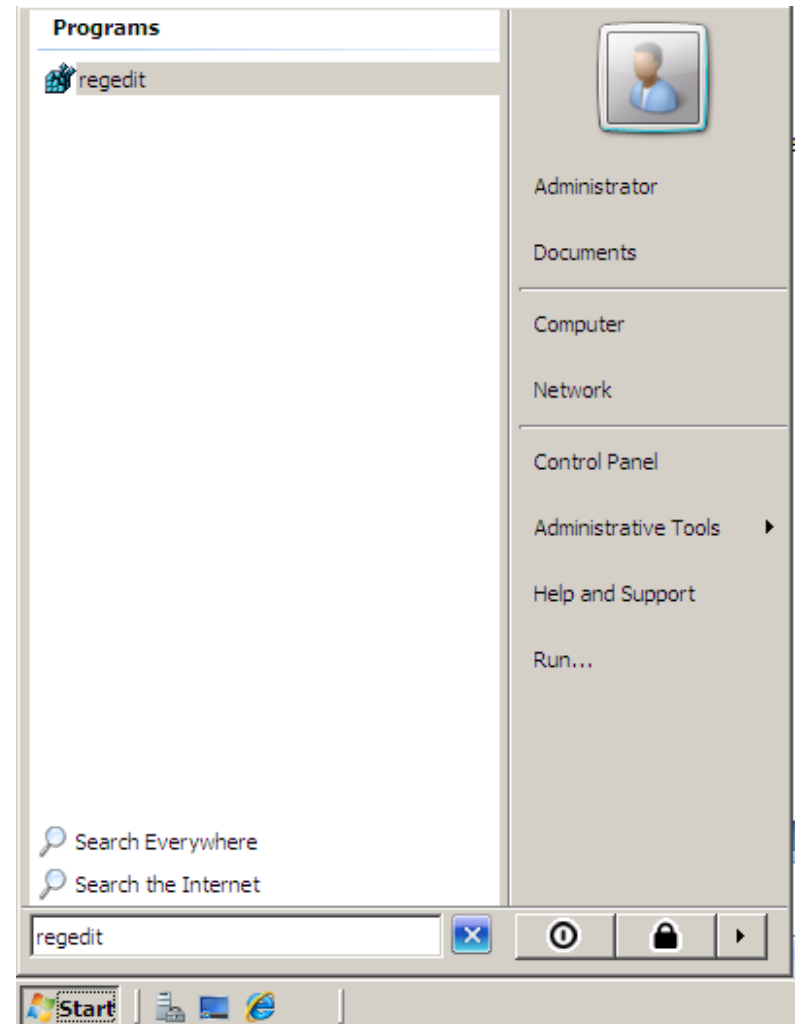
External Card Properties

Uncheck the Internet Protocol 6 (TCP IP v6) checkbox.



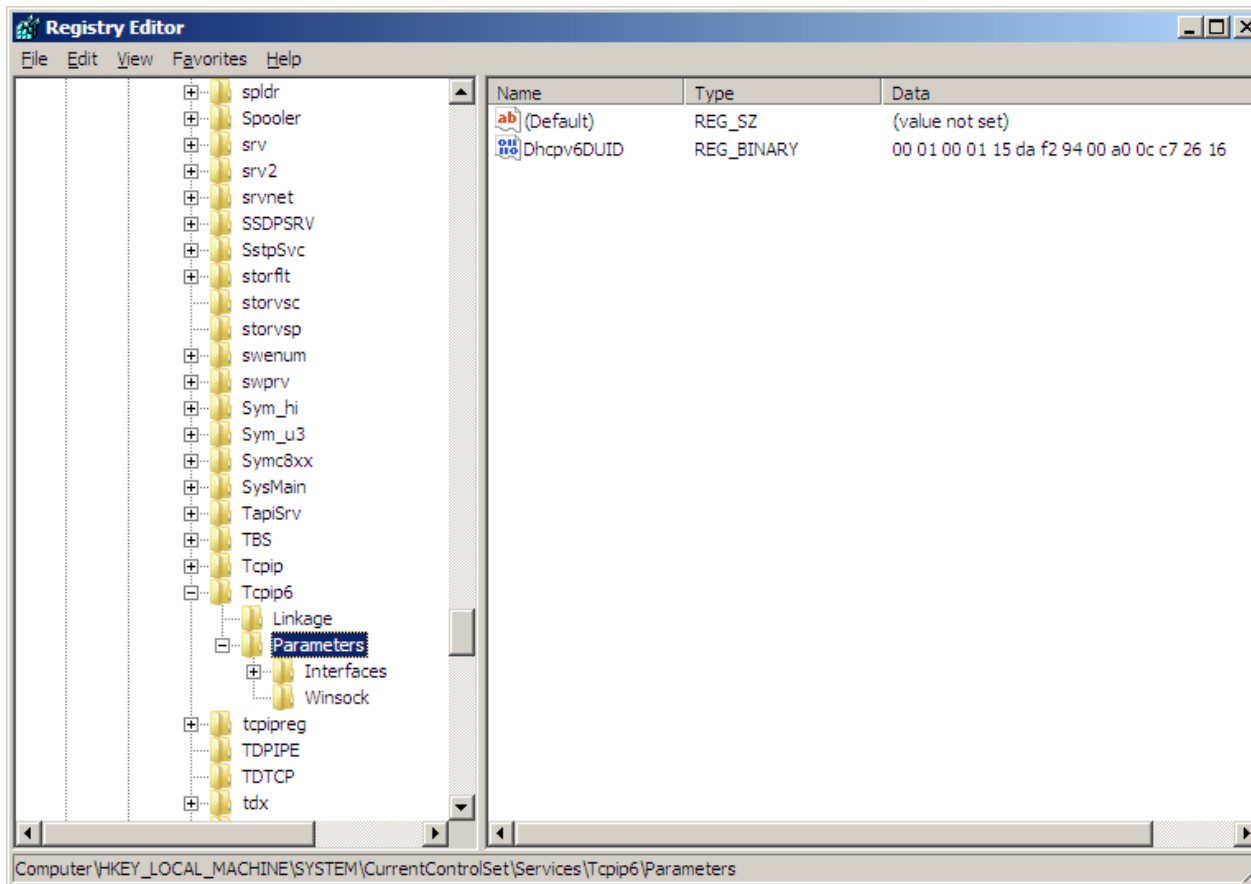
Launch Registry Edit

Open the Start Menu and type **Regedit** in the Search textbox.



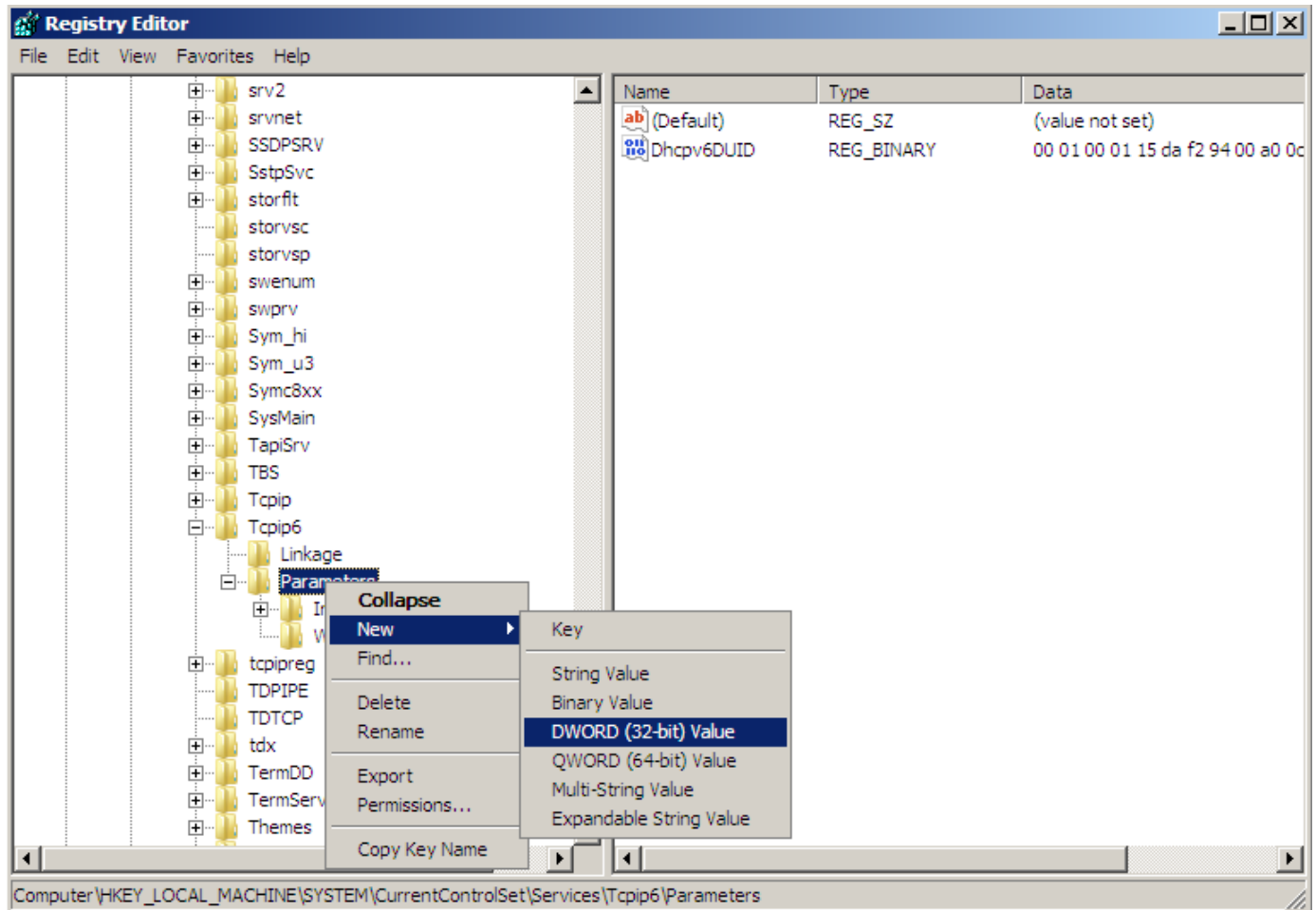
TCPIP6 Parameters

In the Registry Editor, open
HKEY_LOCAL_MACHINE/SYSTEM/CurrentControlSet/Services/Tcpip6/Parameters.



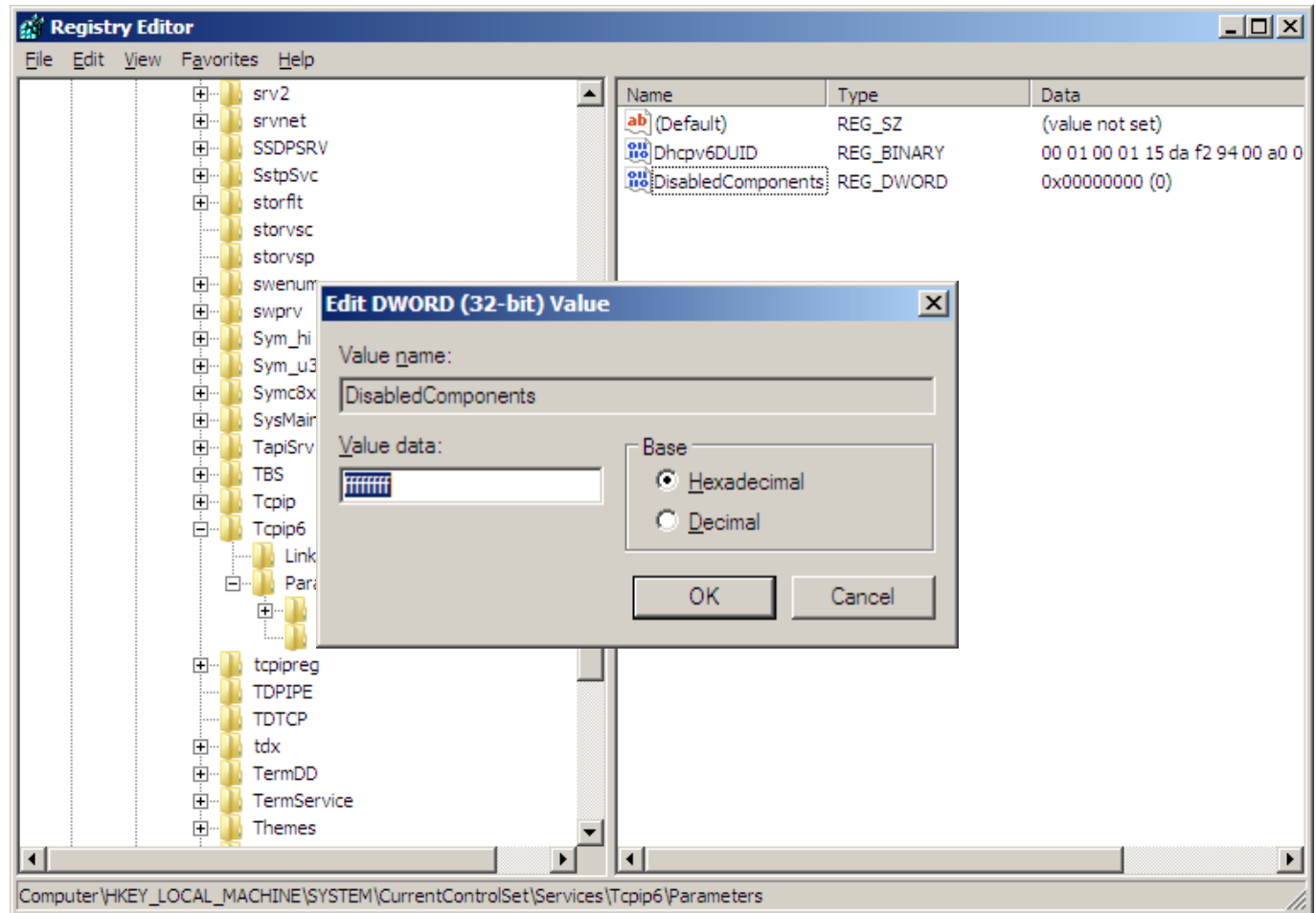
Open DWORD

Right click on Parameters and select New from the menu and DWORD from the next popup menu.



Disabled Components

Type eight f's (ffffffff) in the Value data textbox. The hexadecimal option button should be selected.



Restart the Server

Restart the server for the change to take affect.

