

Adding a Server 2008 Image to a WDS Server

August 30, 2011

Add a Legacy Image to a WDS Server

On the server that is running the Windows Deployment Service, we click on Administrative Tools and choose the Windows Deployment Services to add Windows 2008 Server as another Install image

This WDS server is a member server of an Active Directory domain. We need to have a DHCP and DNS server on the network. We need have a 2008 Server operating system disk and a client computer that can boot to the network.

Select the Next button to continue.

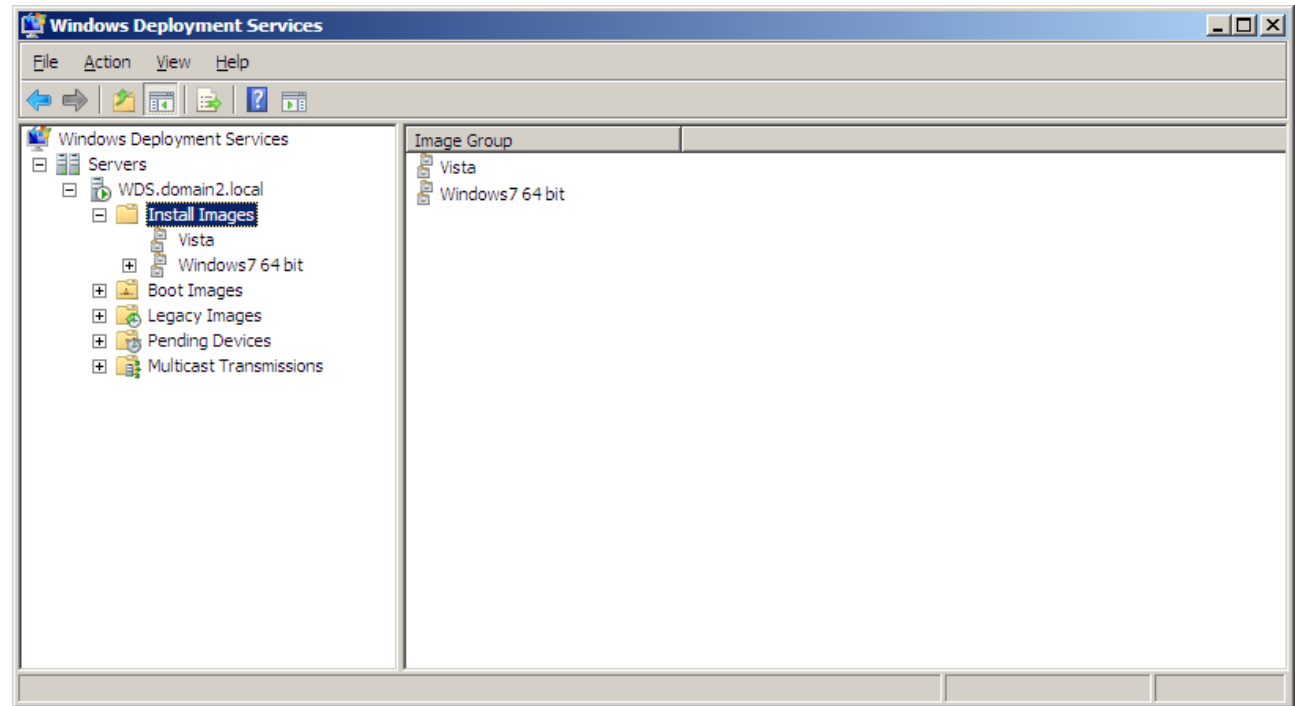
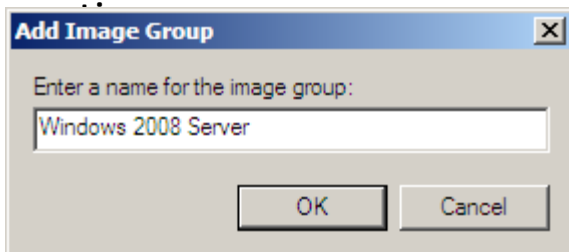
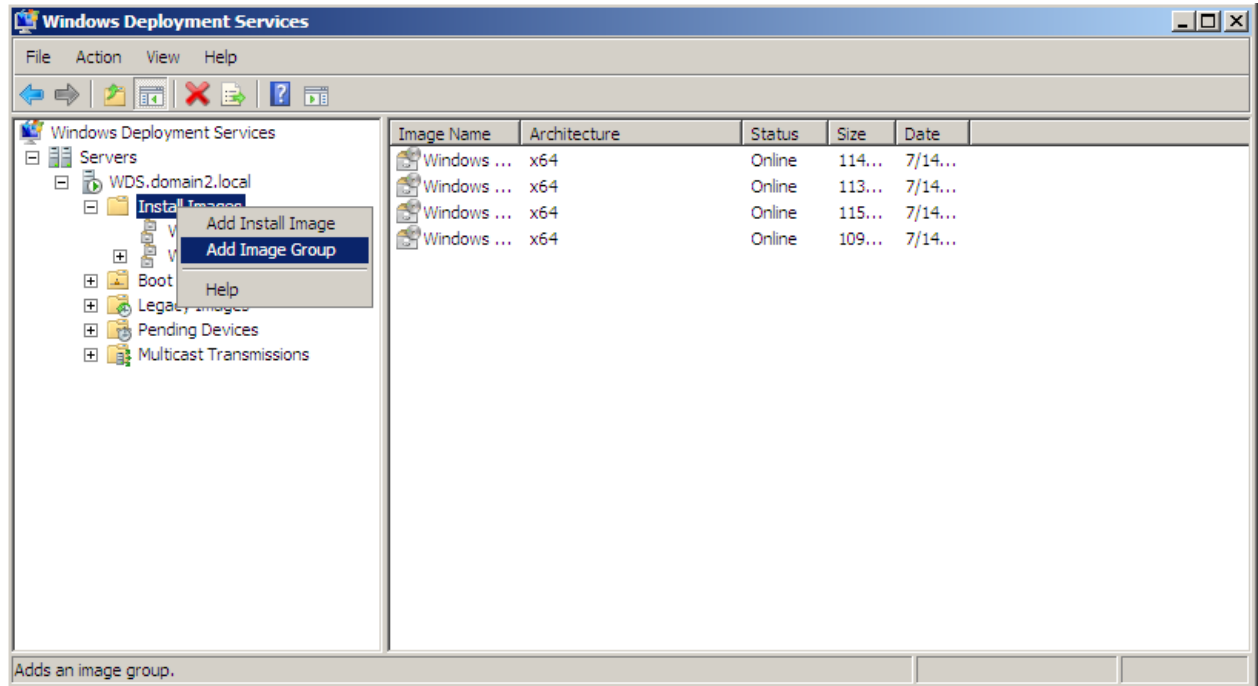


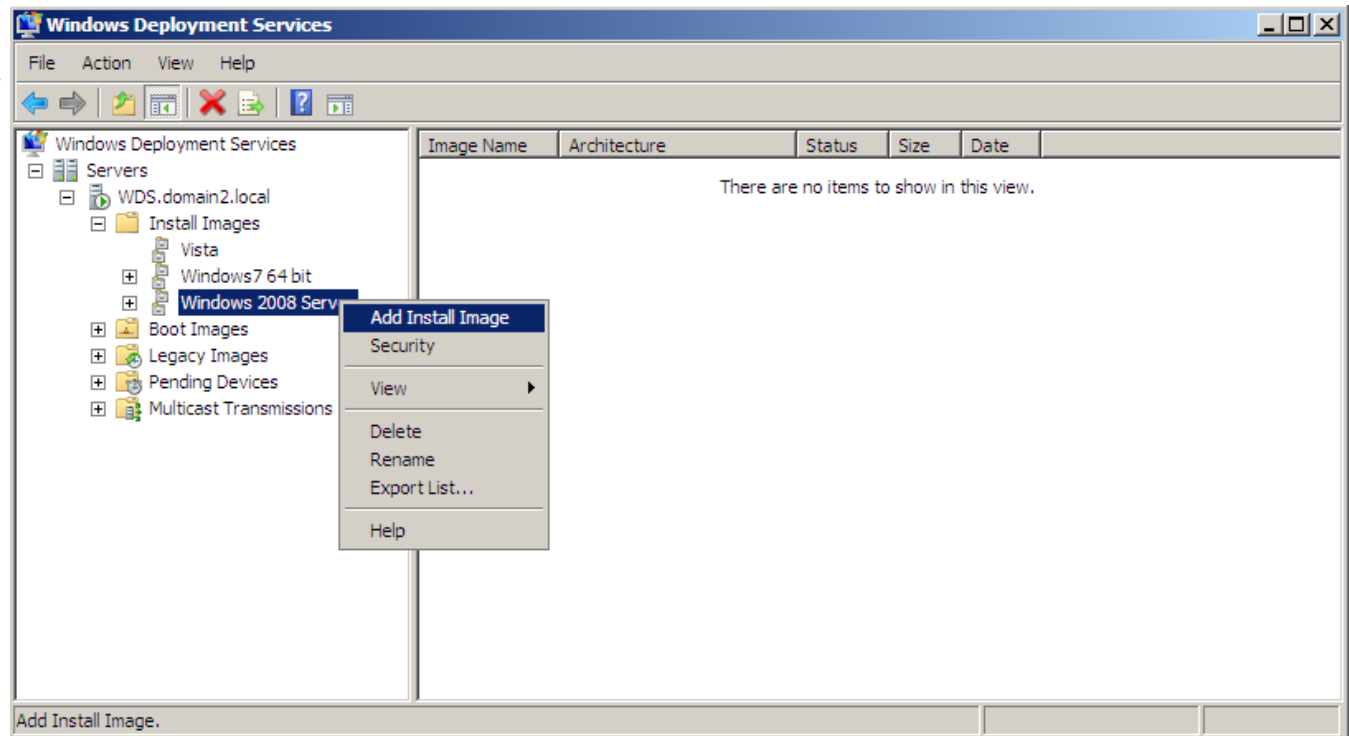
Image Group Name

Our next image we will load is the Windows 2008 Server operating system. We right click on the Install Images folder and we choose Add Image Group. We type Windows 2008 Server as the new image group name and pick OK button to



Add Install Image

The 2008 Server group name is now listed under the Windows 7 group name. We should right click on 2008 Server and we double click on Add Install Image.

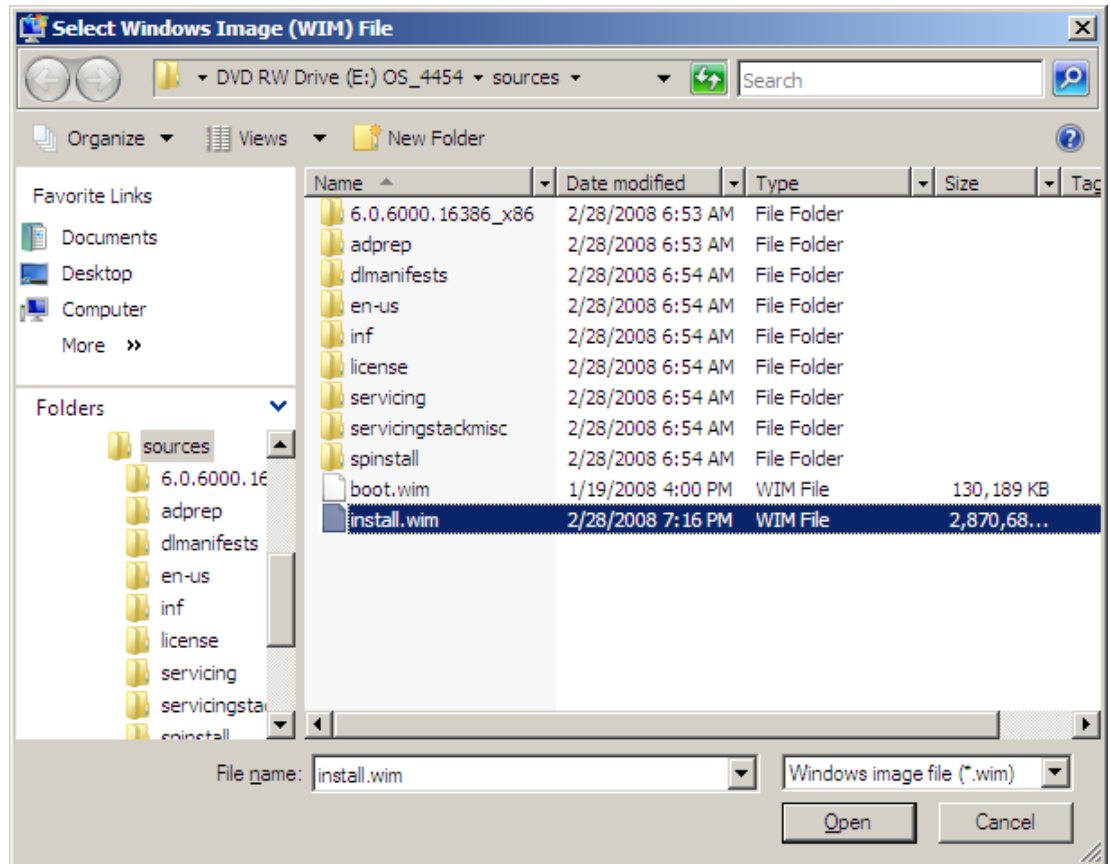
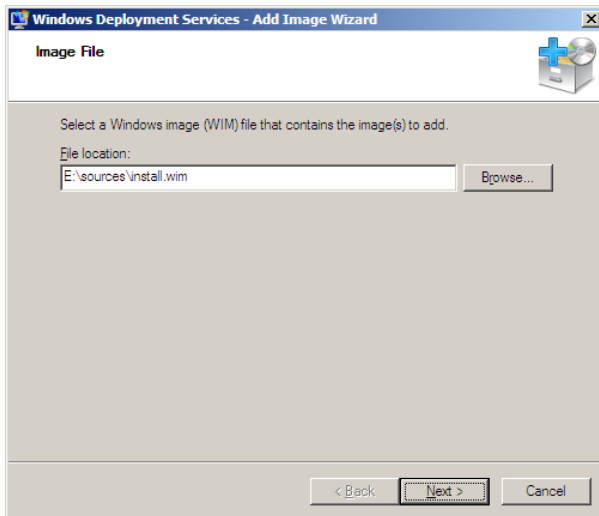


Location of the Windows CD

We will place the Windows 2008 Server operating system CD in the E drive (CDROM), and we pick the Browse button.

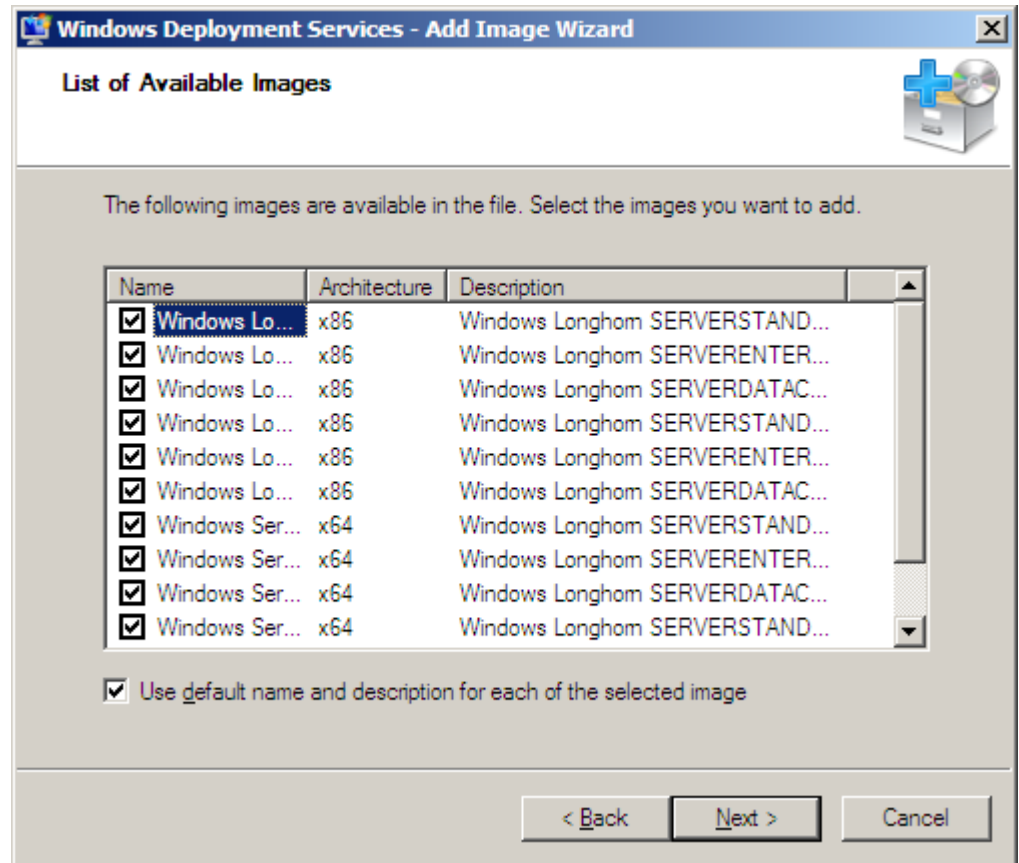
Locating the Install.wim File

In the sources folder of the 2008 Server DVD, we can see the “install.wim” file we need to install an image on the WDS server. We highlight the file and we choose the Open button to continue. The Image File window has the file location, so we push the Next button.



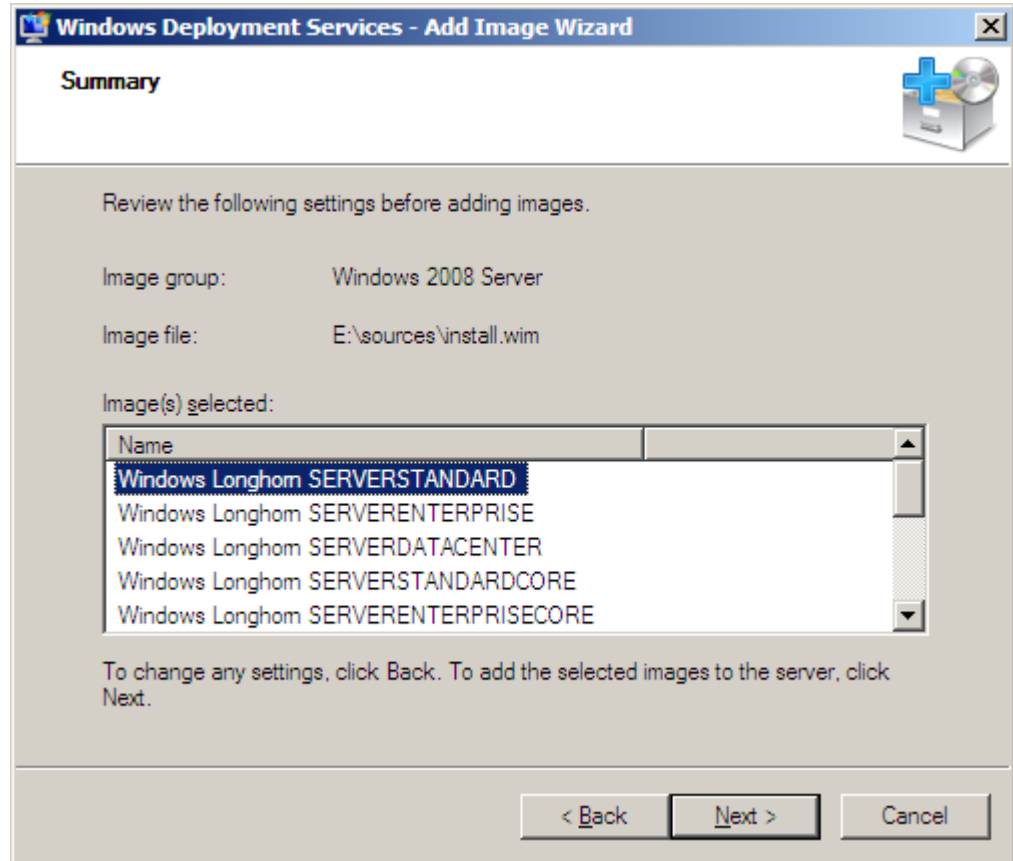
List of Images Available

In this dialogue box, we can check the images we wish to load. On some discs there are more than a single image, so we can check the ones we wish to have in the group. We checked all the Window 2008 Server images and we will advance by selecting the Next button.



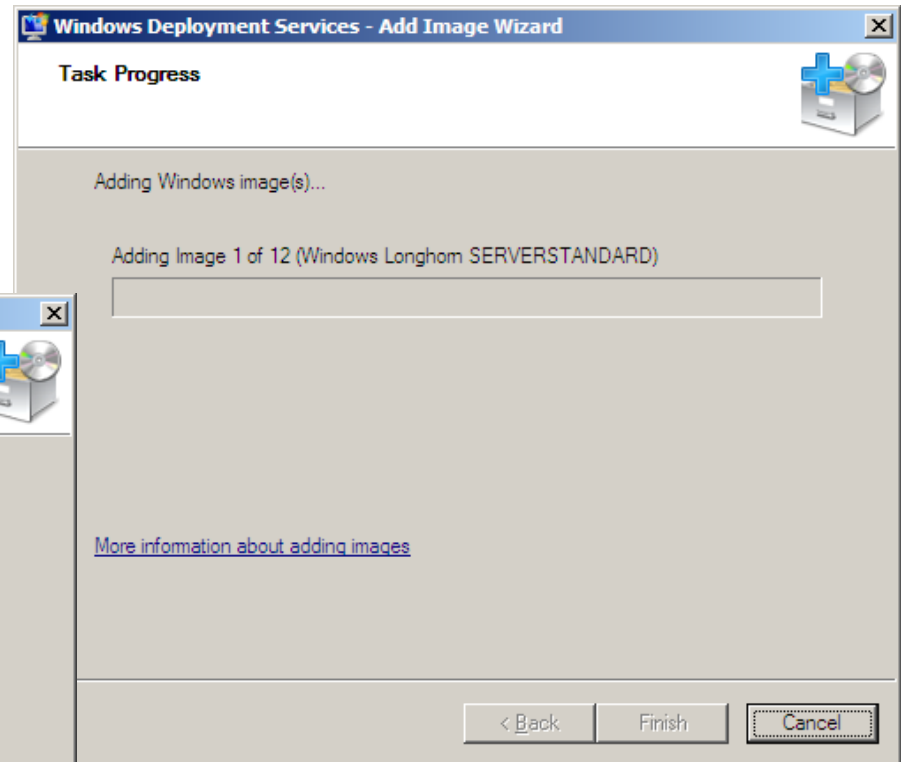
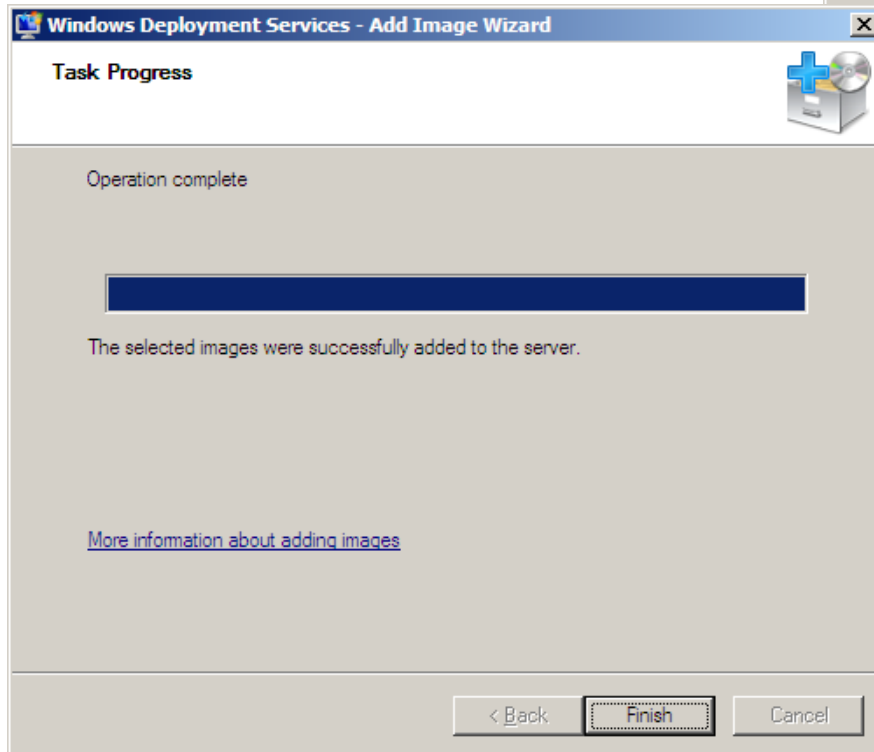
Review the Settings

Before creating the image, we review the settings. If we wish, we can back through the windows and change a previous response. If we agree with the review information, we will press the Next button.



Creating an Image

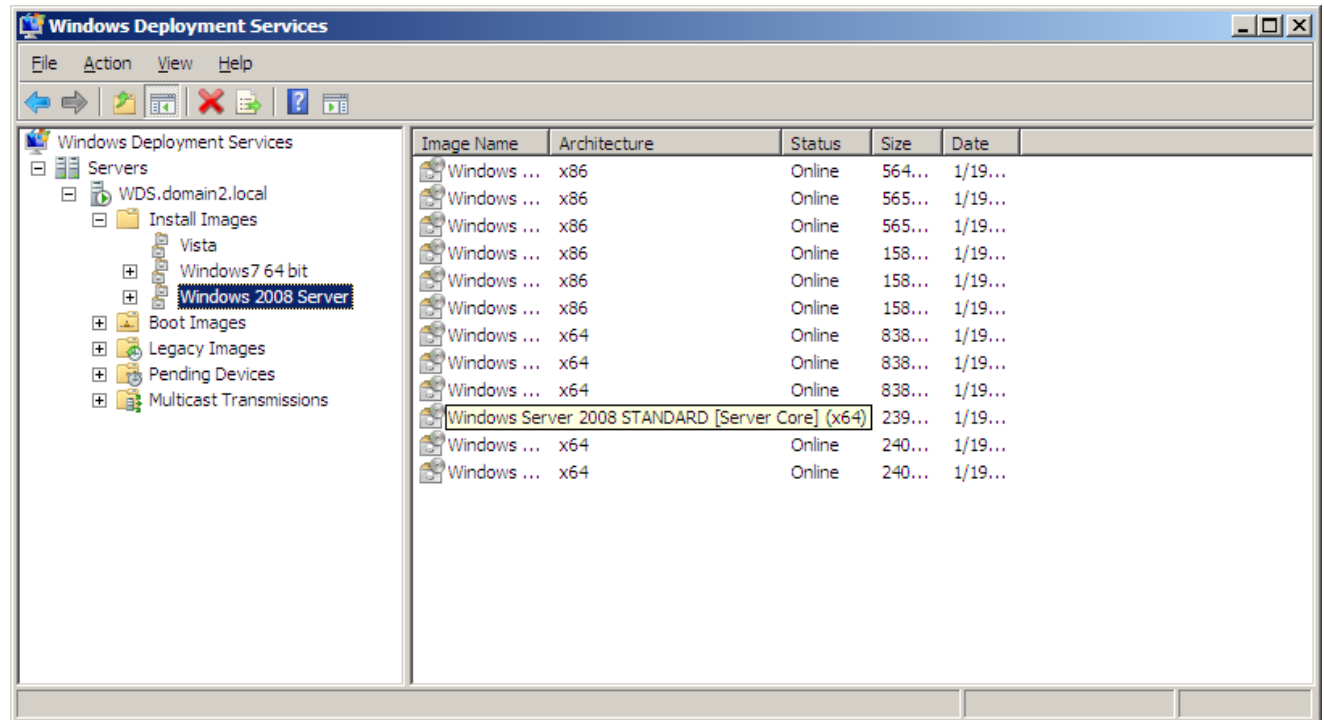
An image of the operating system will be written to the D: drive on the WDS server. When the process is complete, we can load the operating system over the network.



We select the Finish button when the task progress bar is 100% filled.

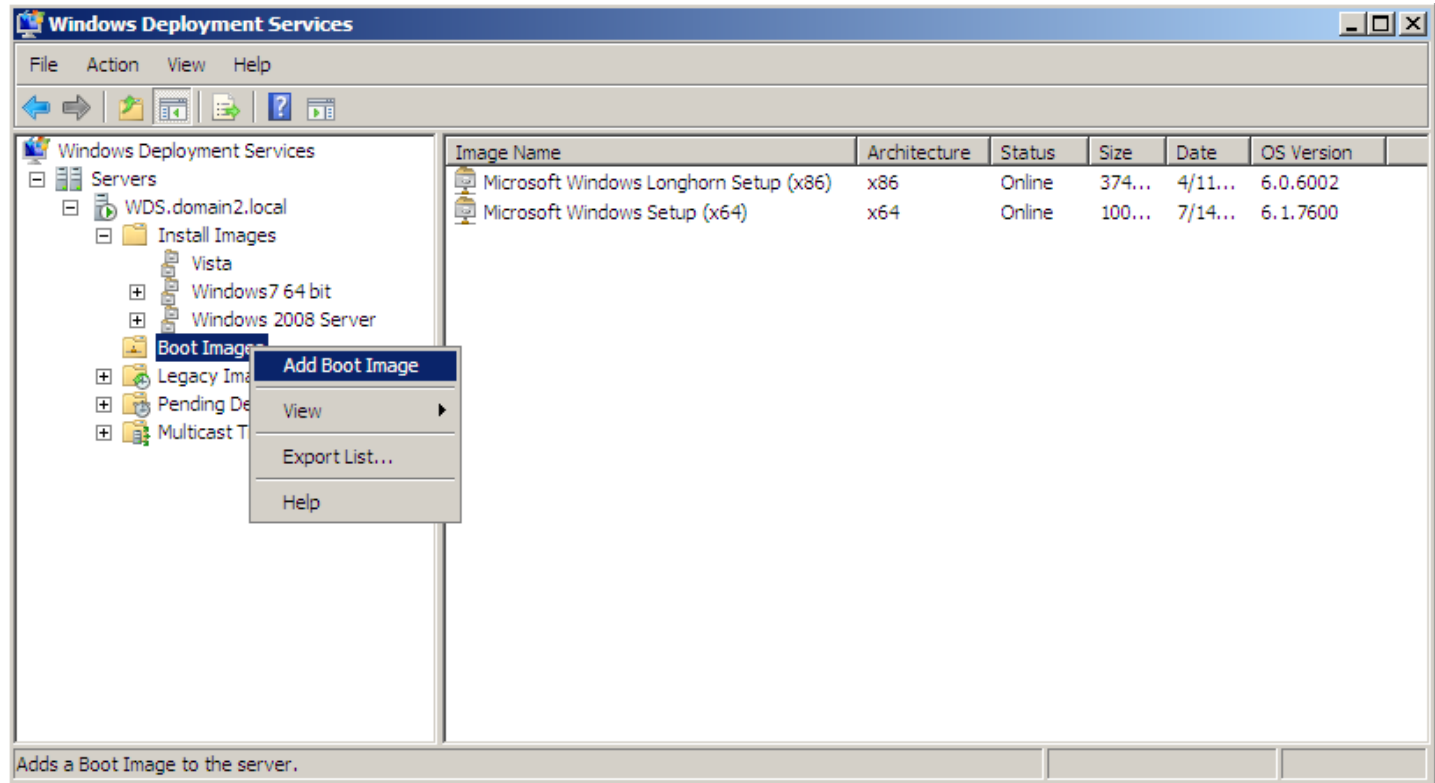
2008 Server Image Added

We now can see the Windows 2008 Server Images added on the WDS console.



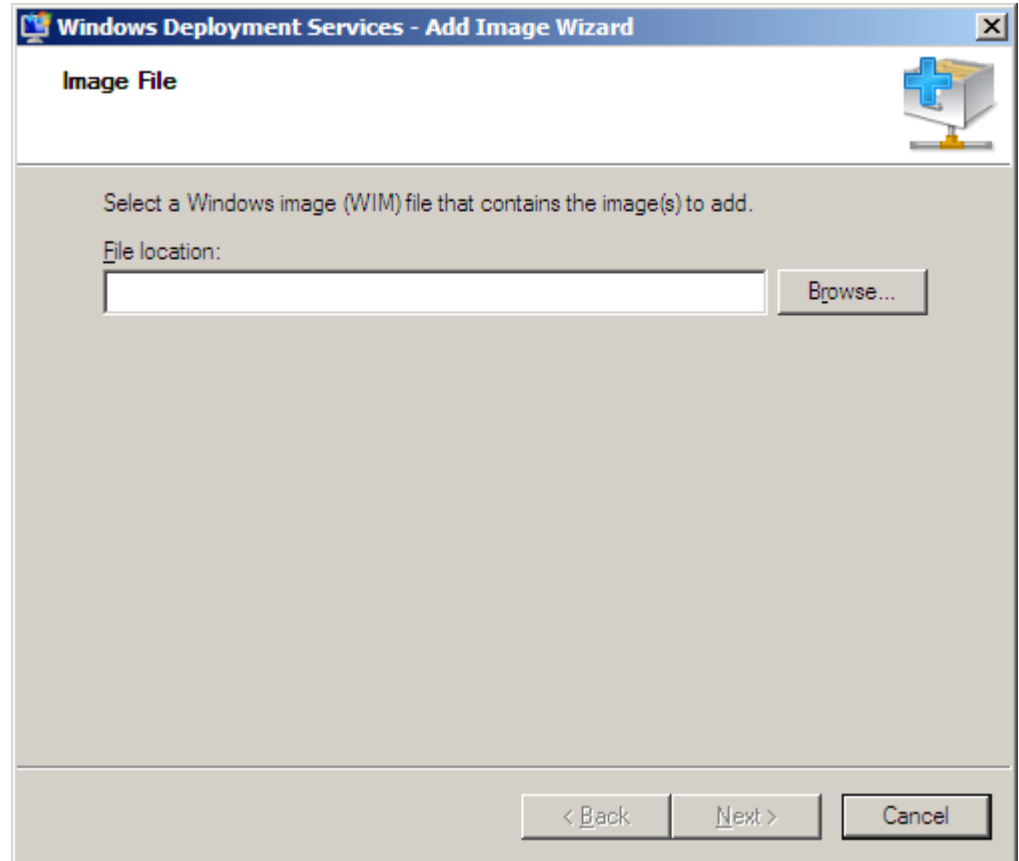
Add Boot Image

We should right click on Boot Images and we double click on Add Boot Image.



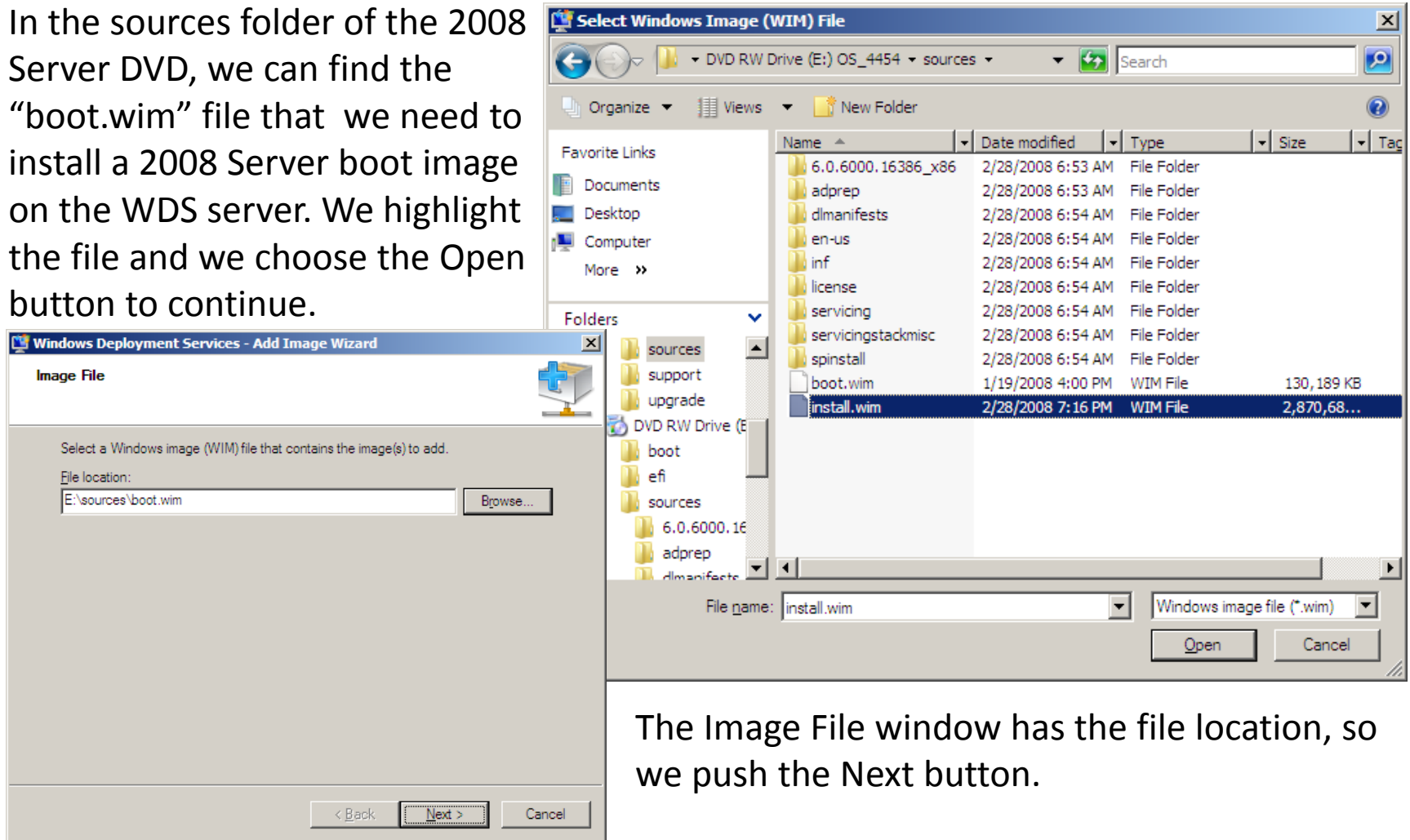
Location of the Windows CD

With the Windows 2008 Server operating system CD still in the E drive (CDROM), we choose the Browse button to locate the Boot image on the DVD.



Locating the boot.wim File

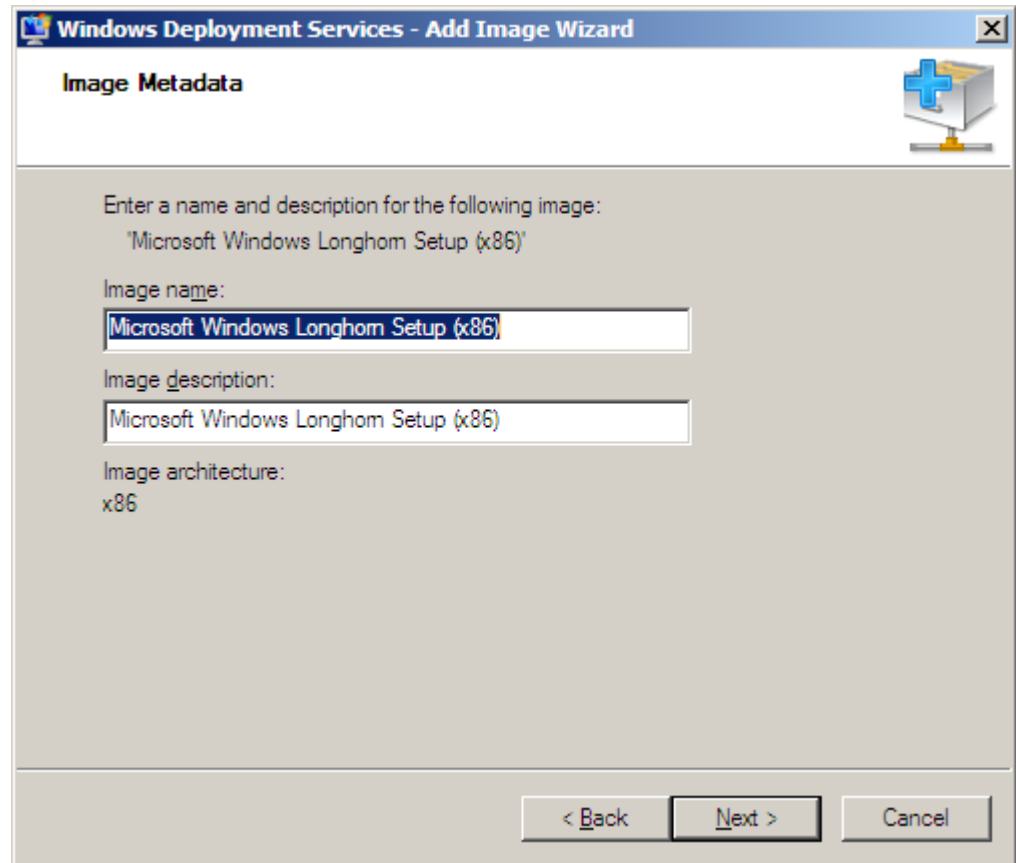
In the sources folder of the 2008 Server DVD, we can find the “boot.wim” file that we need to install a 2008 Server boot image on the WDS server. We highlight the file and we choose the Open button to continue.



The Image File window has the file location, so we push the Next button.

Image Metadata

In this window, we have the opportunity to name and describe the image . We choose the defaults and we select Next.



The screenshot shows a window titled "Windows Deployment Services - Add Image Wizard" with a sub-header "Image Metadata". The window contains the following text and input fields:

Enter a name and description for the following image:
'Microsoft Windows Longhorn Setup (x86)'

Image name:

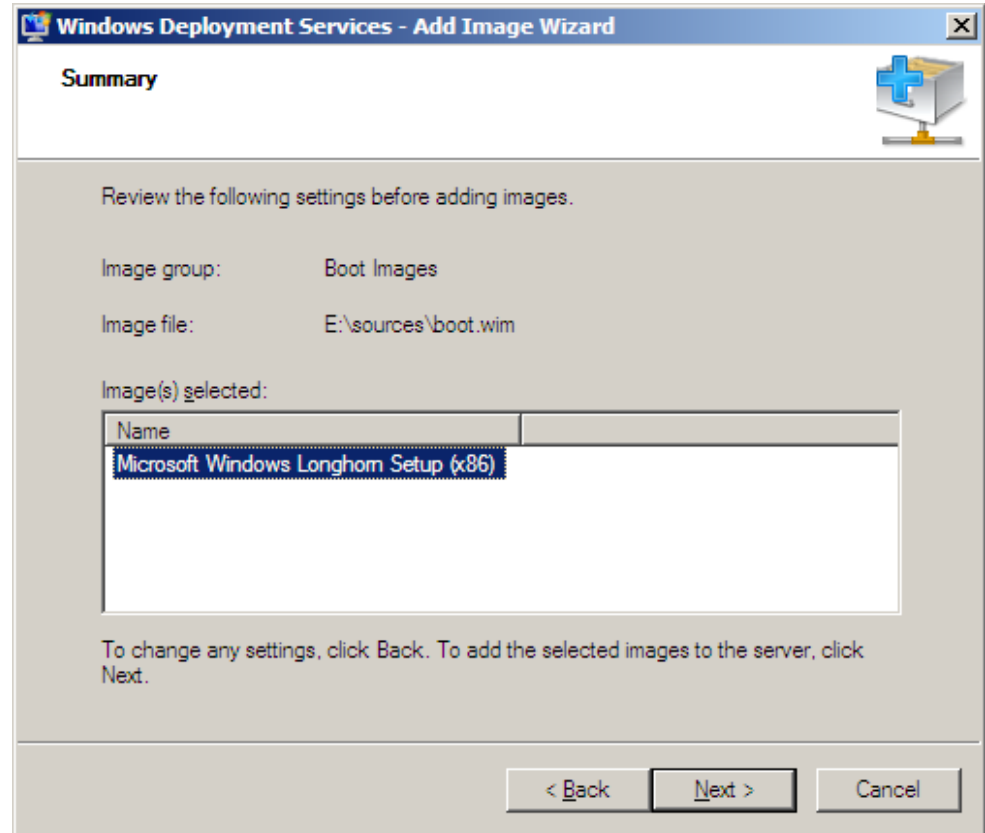
Image description:

Image architecture:
x86

At the bottom right, there are three buttons: "< Back", "Next >", and "Cancel".

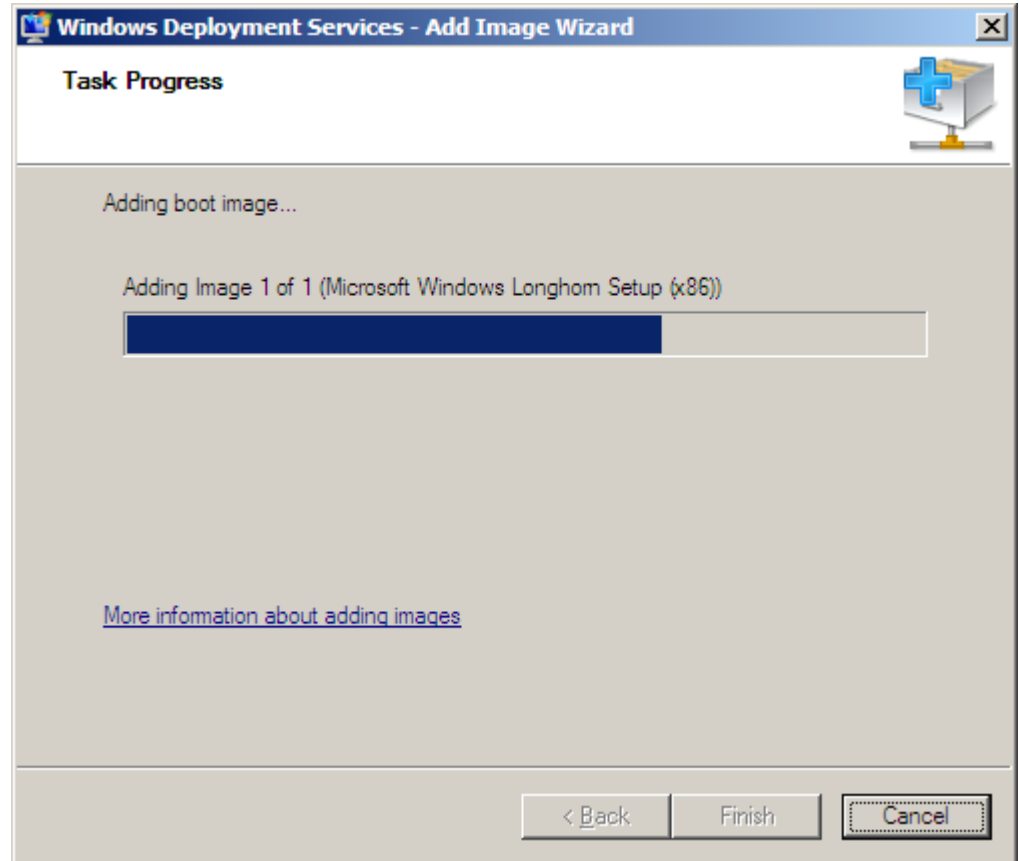
The Summary Window

Before creating the boot image, we review the settings. If we wish, we can back through the windows and change a previous response. If we agree with the review information, we will press the Next button.

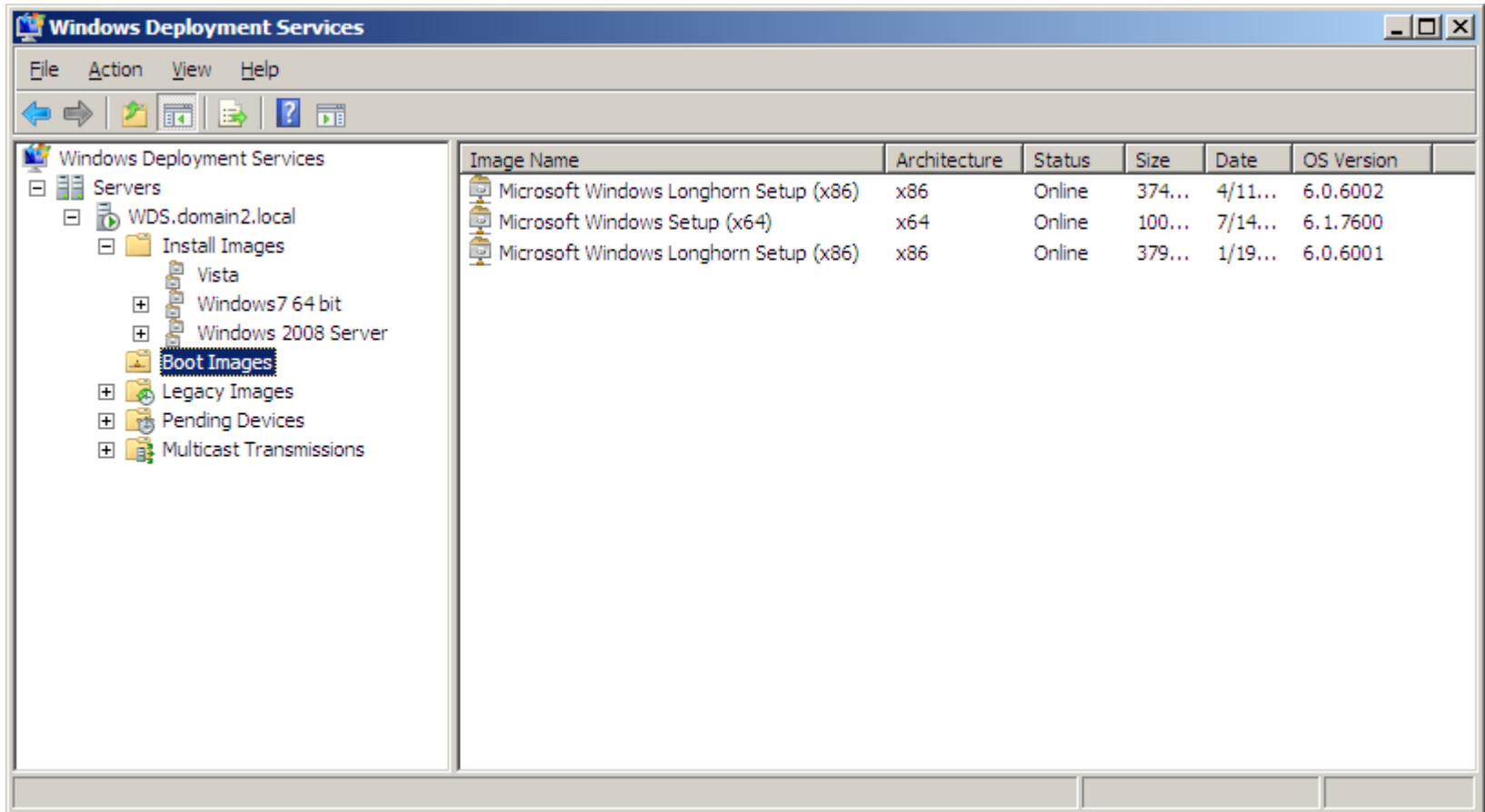


The Task Progress Window

An image of the operating system will be written to the D: drive on the WDS server. When the process is complete, we can load the operating system over the network.



Windows 2008 Server Ready to Deploy



We are now ready to load Windows 2008 Server to a client computer using the Windows Deployment Server.