

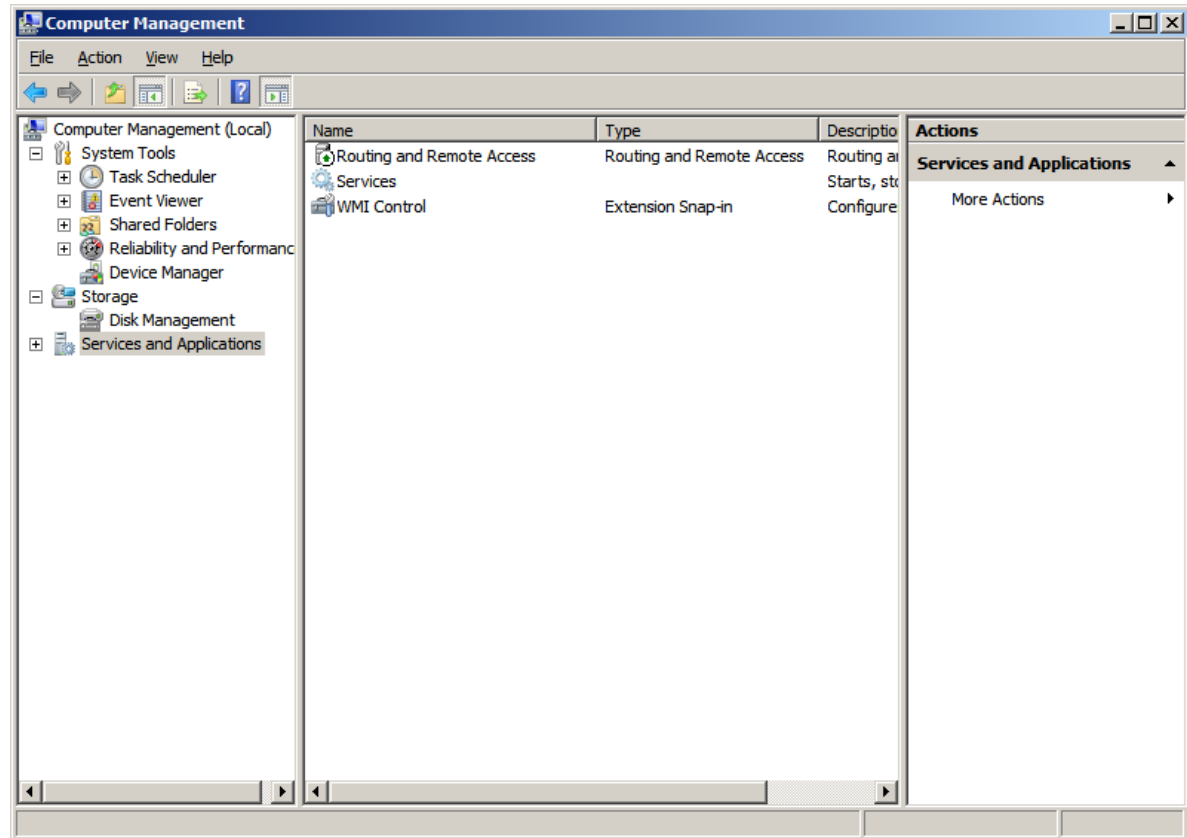
# Add Print Server Role to a Windows 2008 Server

May 22, 2012

# Computer Management

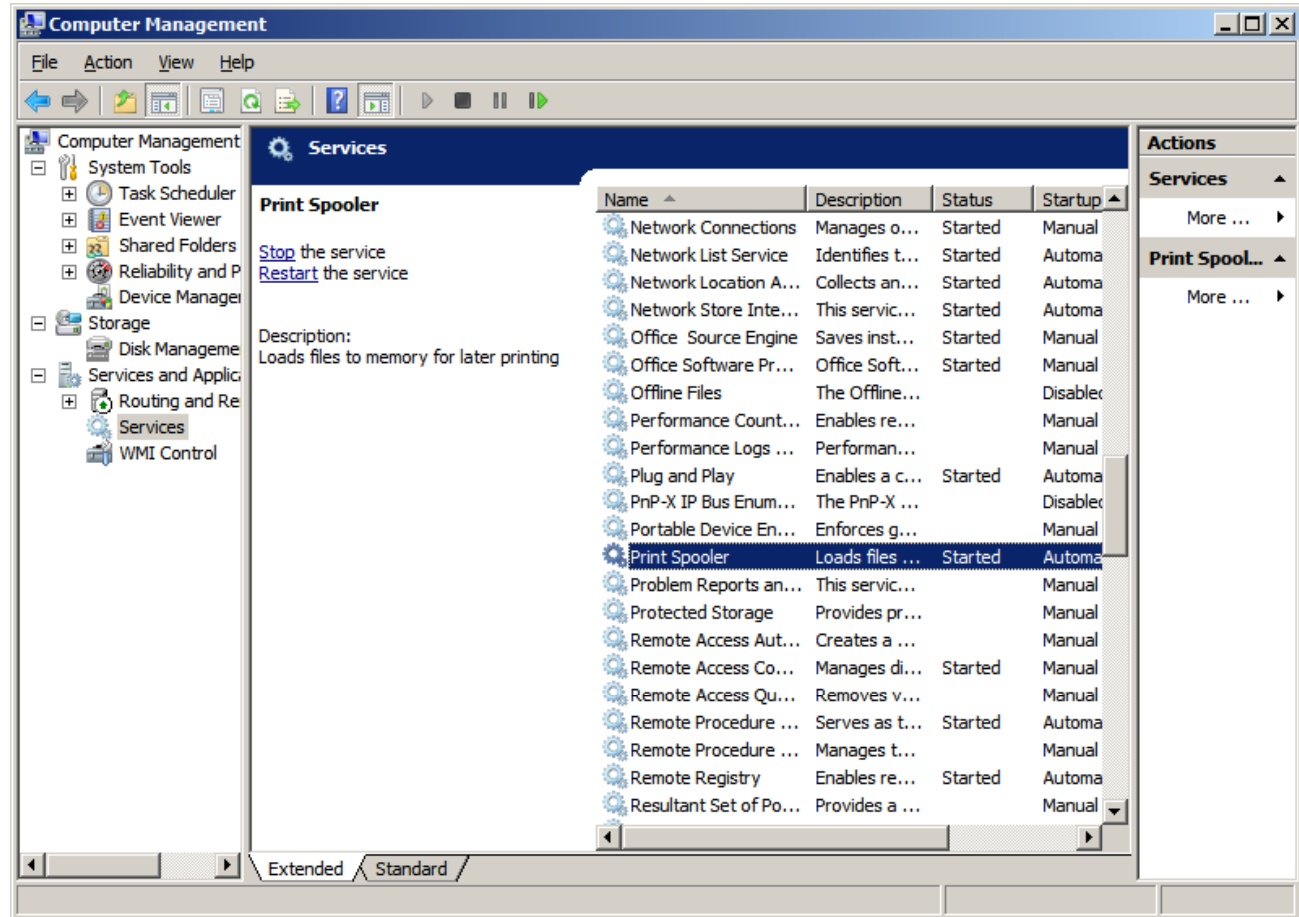
Open the Computer Management window on the Windows 2008 Server and we should pick the Services and Applications in the right pane.

We can go to Services off of the Administrative Tools menu, also.



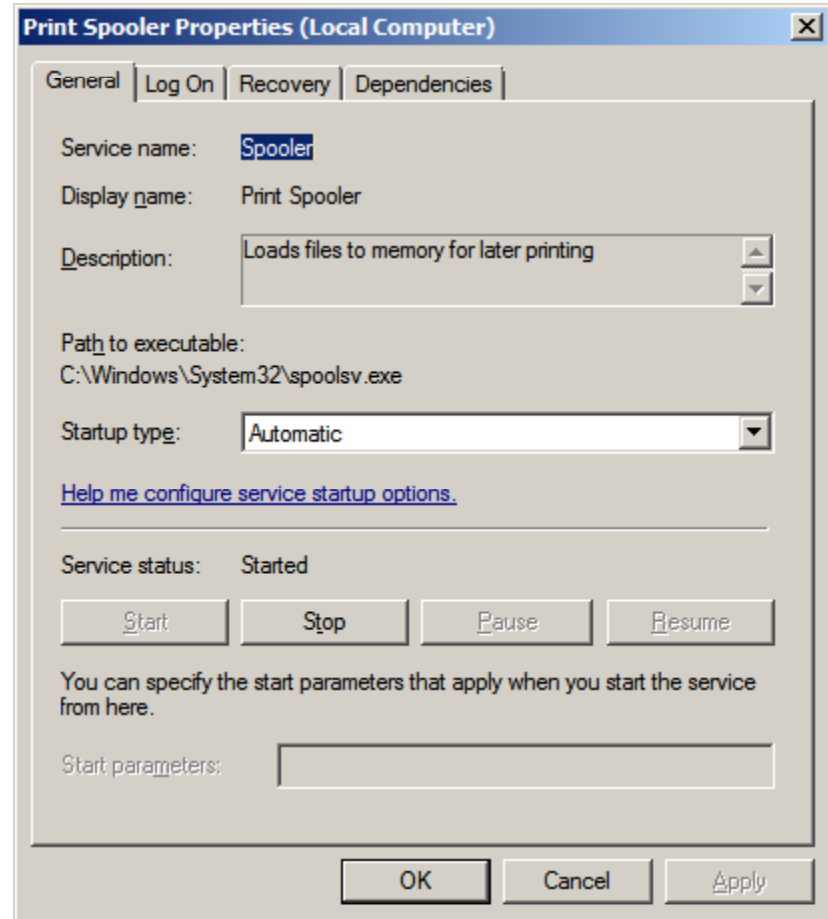
# Find the Print Spooler

Locate the Print Spooler service in the list in the middle pane.



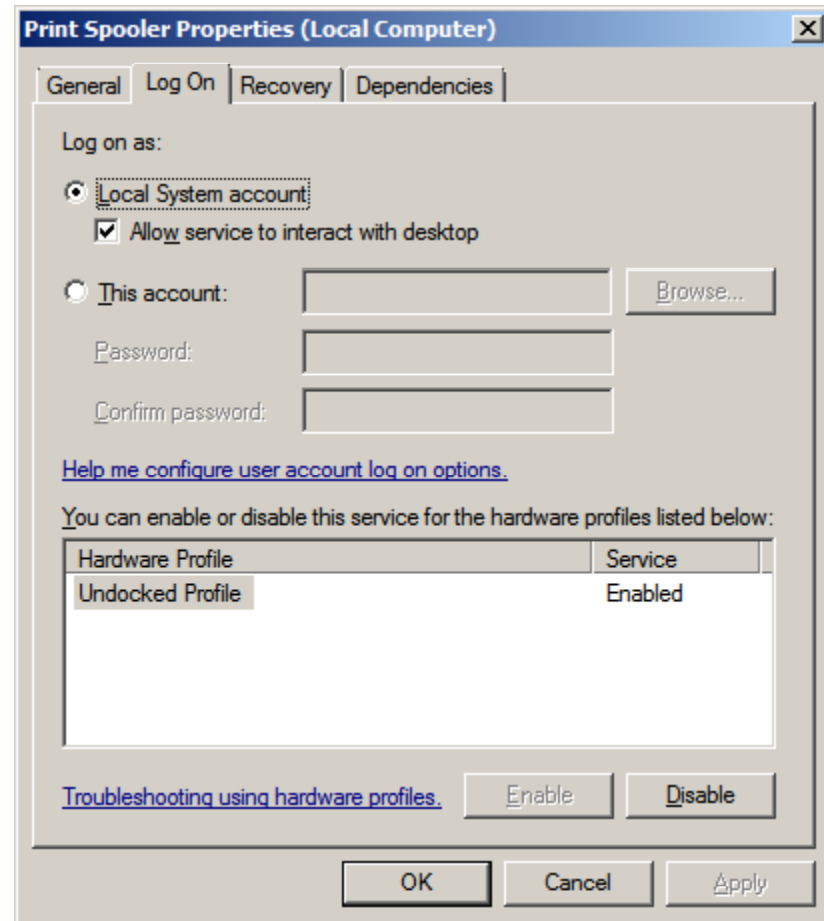
# Print Spooler - General Tab

The print spooler loads files to memory for later printing. The service is also started.



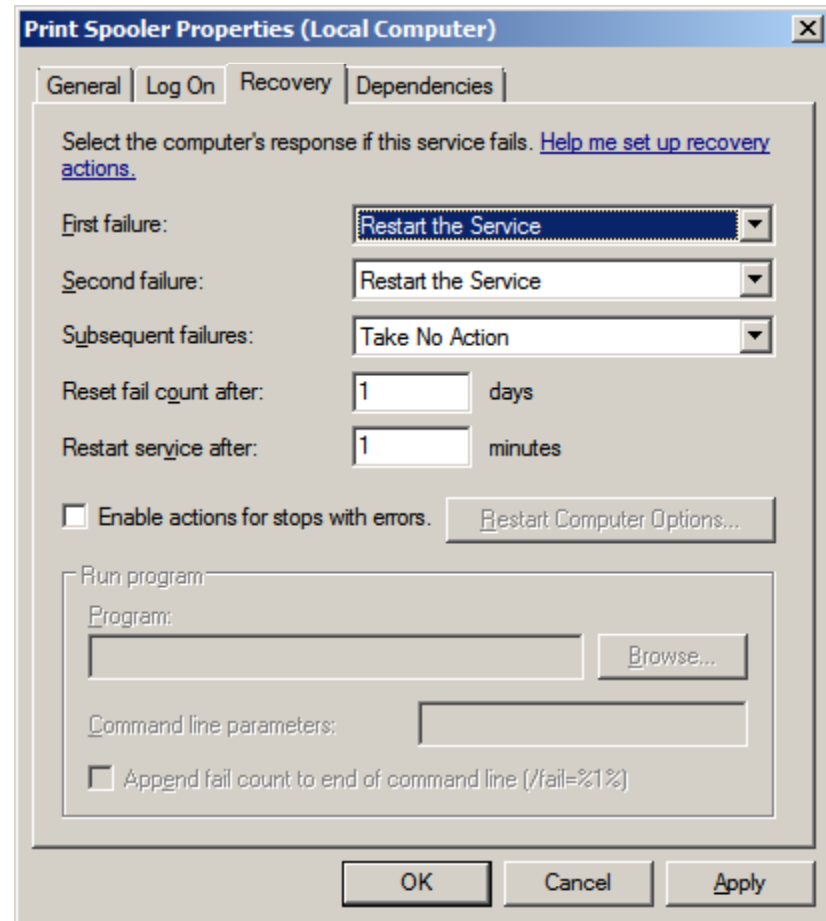
# Print Spooler – Logon Tab

The print spooler will allow service to interact with the desktop.



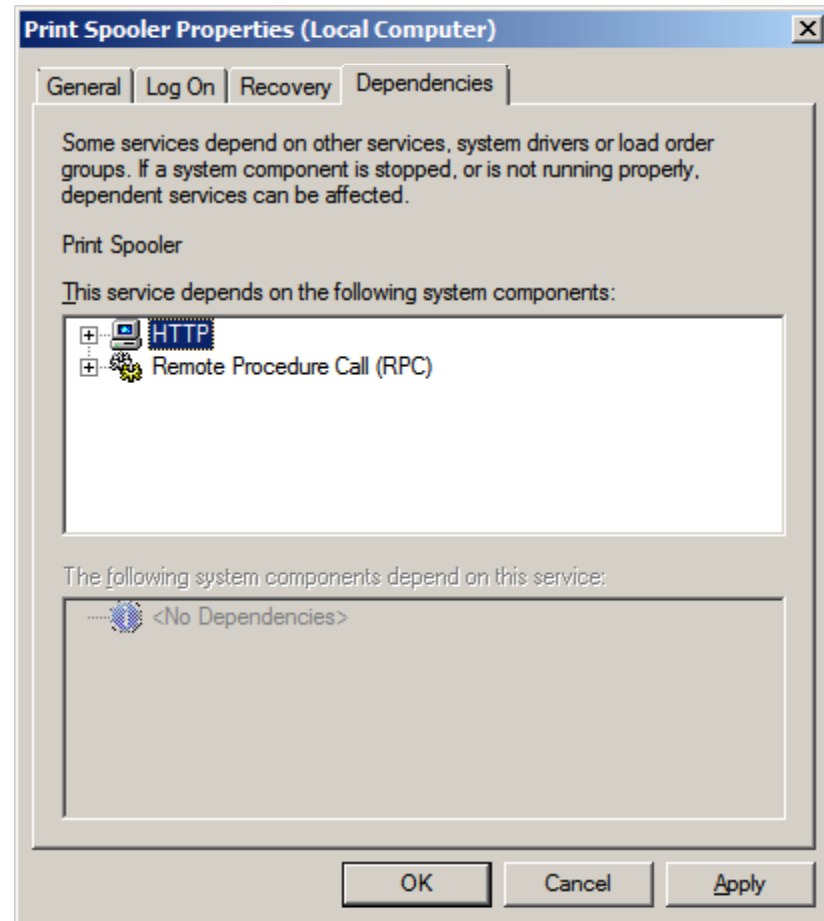
# Print Spooler – Recovery Tab

The print spooler has options for first, second and subsequent print spooling failures.



# Print Spooler - Dependencies Tab

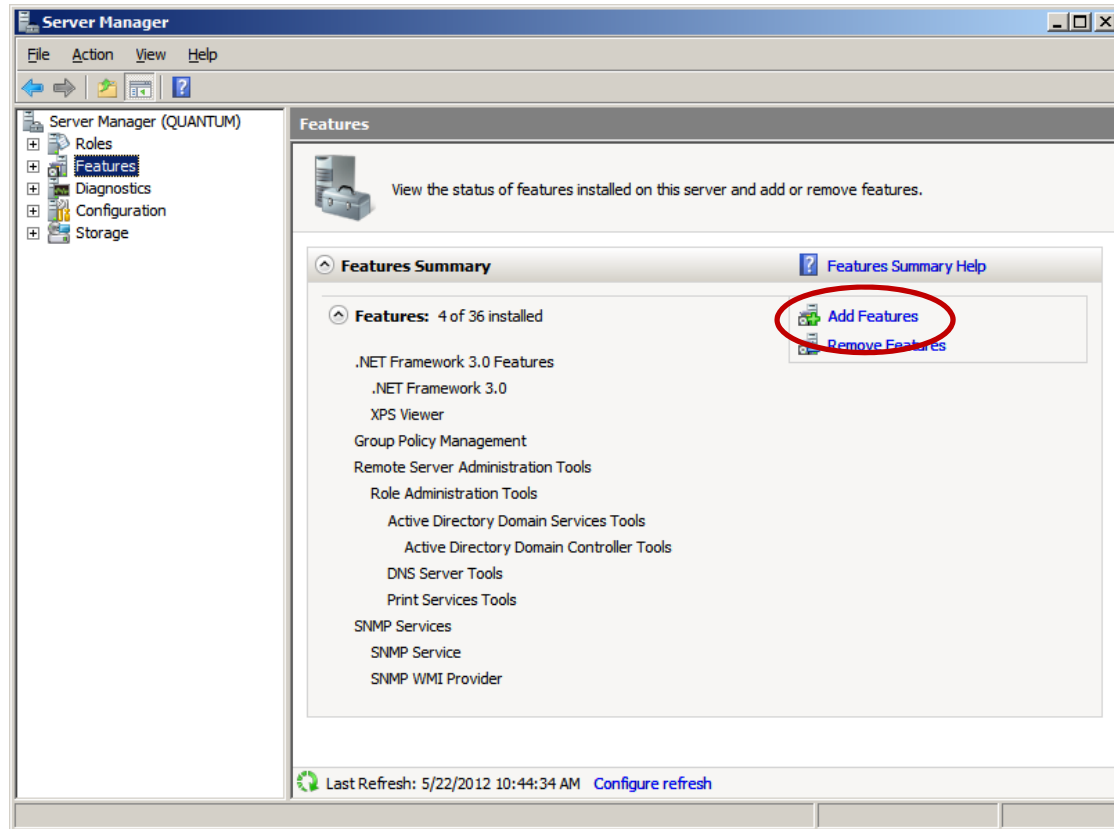
The print spooler depends on the remote procedure call.



# Add Internet Printing Client

Next, we will add Internet Printing Client feature, which will allow clients connecting to the server to utilize Internet Printing Protocol.

We go to Administrative Tools and open the Server Manager window. This time we pick Features in the left pane and then Add Features in the right pane.

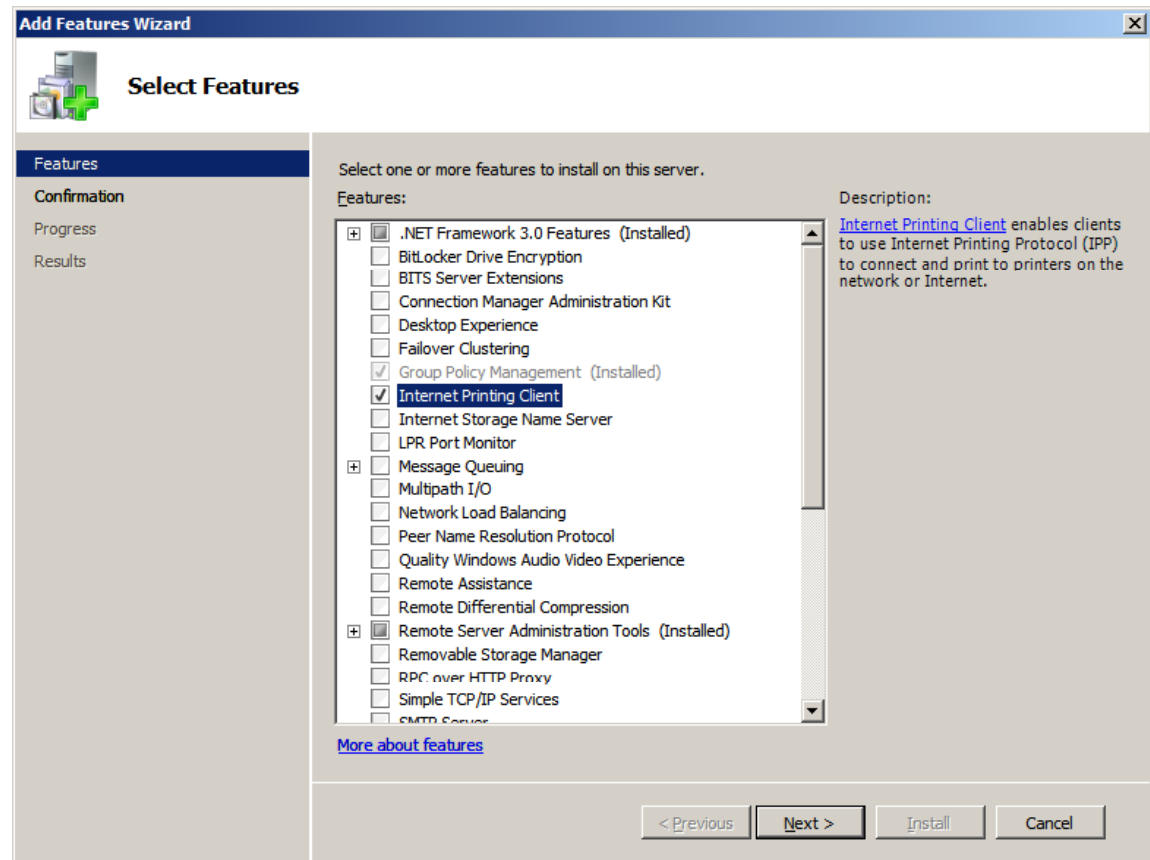




# Internet Printing Client

We then annotate the Internet Printing Client.

We should push the Next button to continue.



# Install the Feature

We will confirm and install the Internet Printing feature over the next 3 windows.

The image displays three overlapping screenshots of the Windows Add Features Wizard, illustrating the installation process for the Internet Printing Client feature.

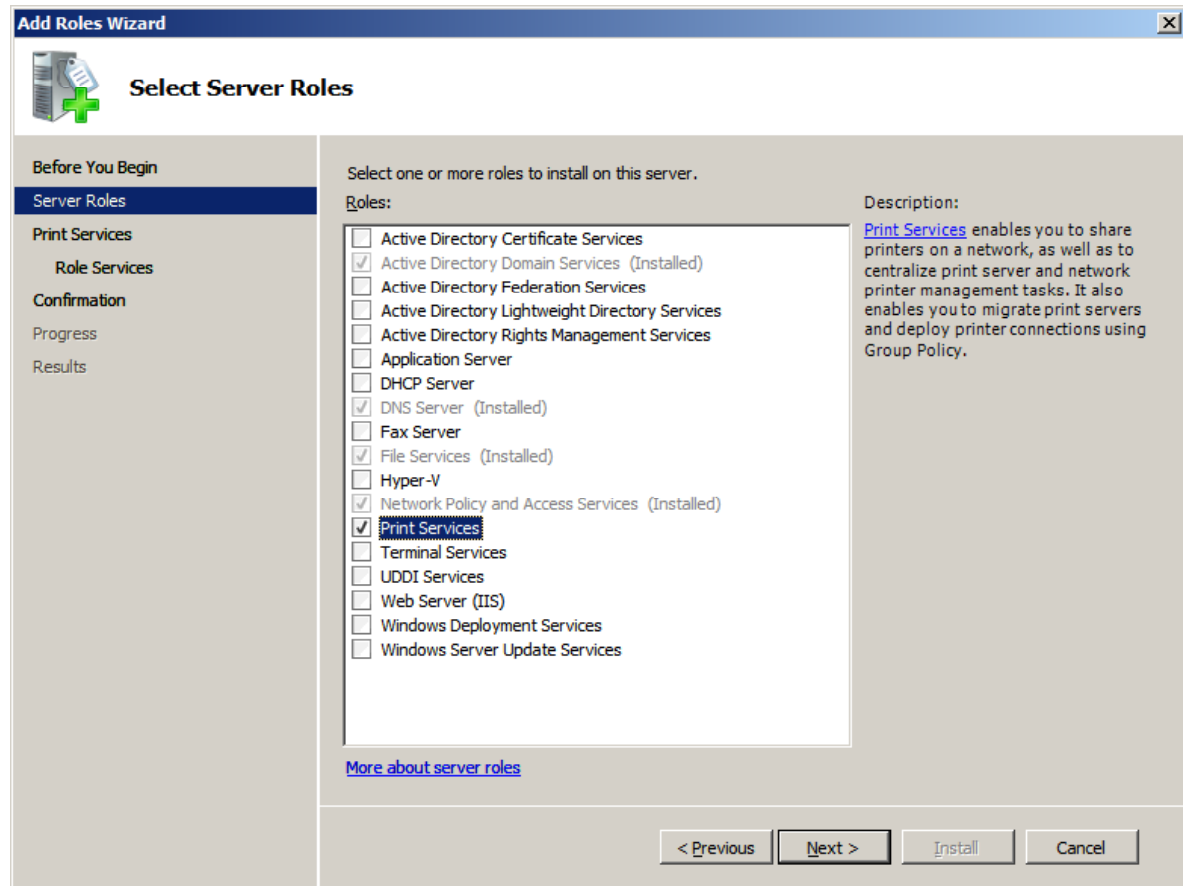
**Top Window: Confirm Installation Selections**  
This window shows the confirmation step. The left sidebar has "Confirmation" selected. The main area contains the text: "To install the following roles, role services, or features, click Install." Below this, there is an informational message: "1 informational message below". A message box states: "This server might need to be restarted after the Internet Printing Client". A link at the bottom reads "Print, e-mail, or save this information". A "< Previous" button is visible at the bottom right.

**Middle Window: Installation Progress**  
This window shows the progress step. The left sidebar has "Progress" selected. The main area contains the text: "The following roles, role services, or features are being installed:". A link at the bottom reads "Print, e-mail, or save this information".

**Bottom Window: Installation Results**  
This window shows the results step. The left sidebar has "Results" selected. The main area contains the text: "The following roles, role services, or features were installed successfully:". A message box shows: "Internet Printing Client" with a green checkmark and the text "Installation succeeded". A link at the bottom reads "Print, e-mail, or save the installation report". Buttons at the bottom include "< Previous", "Next >", "Close", and "Cancel".

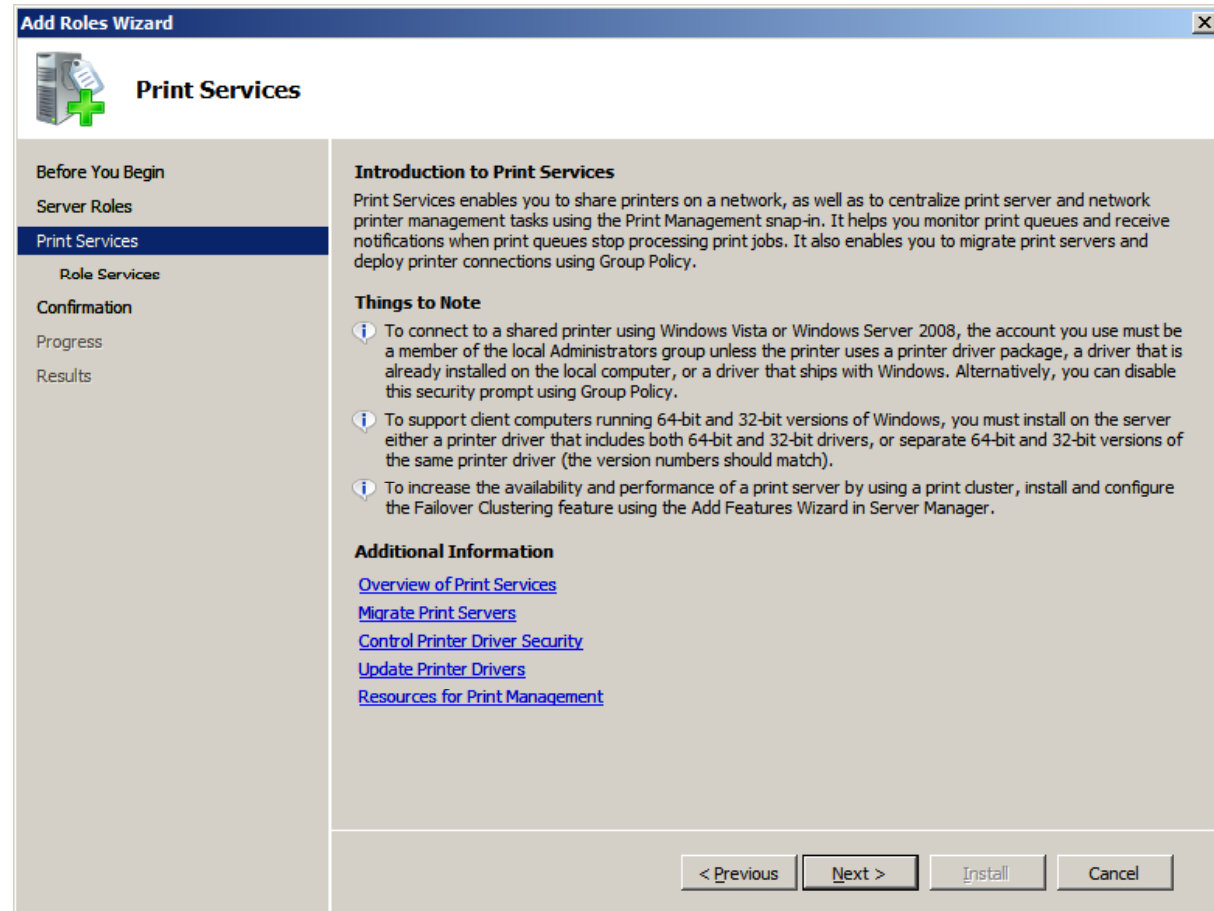
# Select Print Services Server Role

Select the Print Services server role and choose the Next command button.



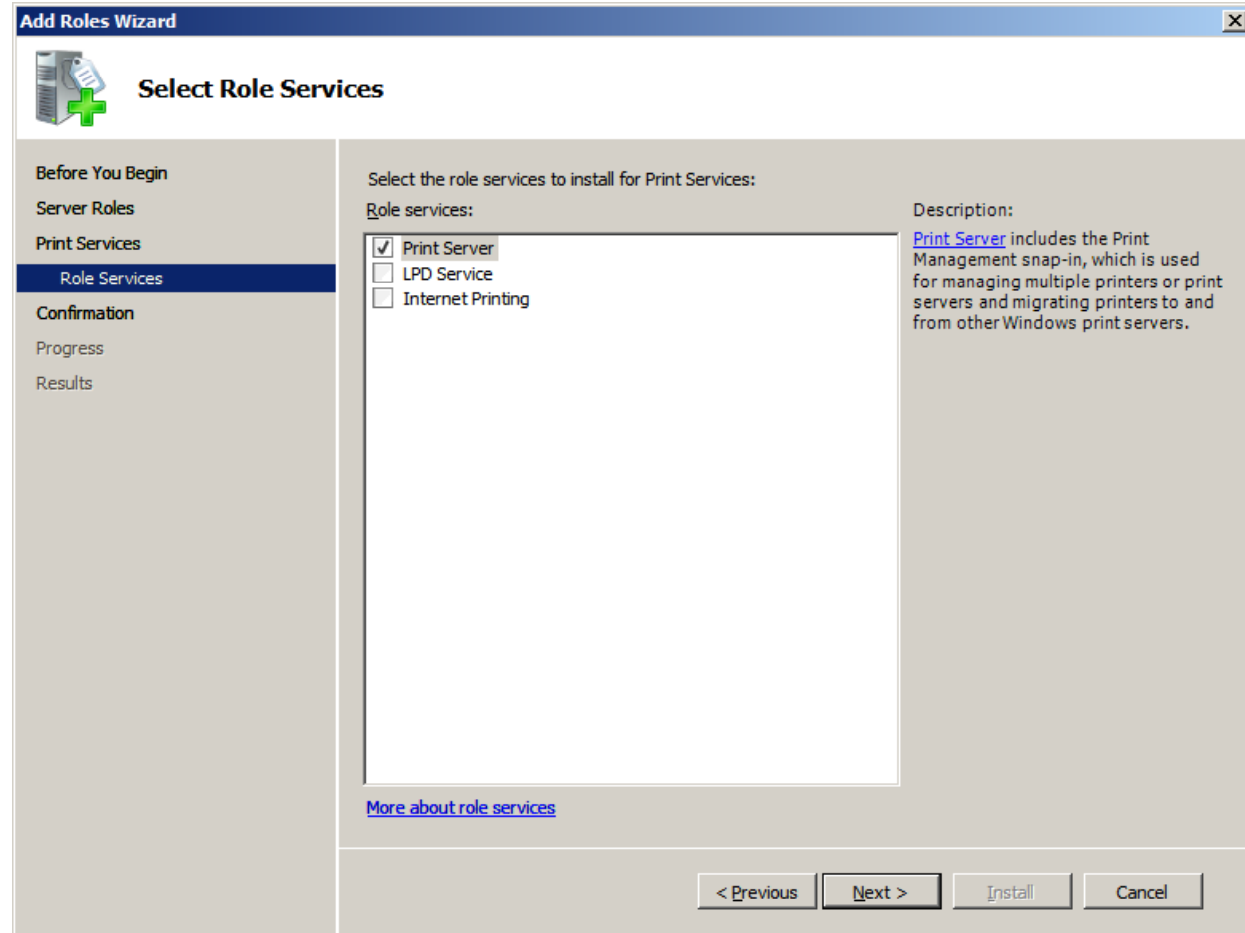
# Print Services

There are three things to note about printing services. One, we need to install 32 and 64 bit drivers to support both types of clients. Also, there are issues with sharing a printer with Windows Vista clients. Always read the things to note, but more importantly, we should test the printing ability of every client on the network.



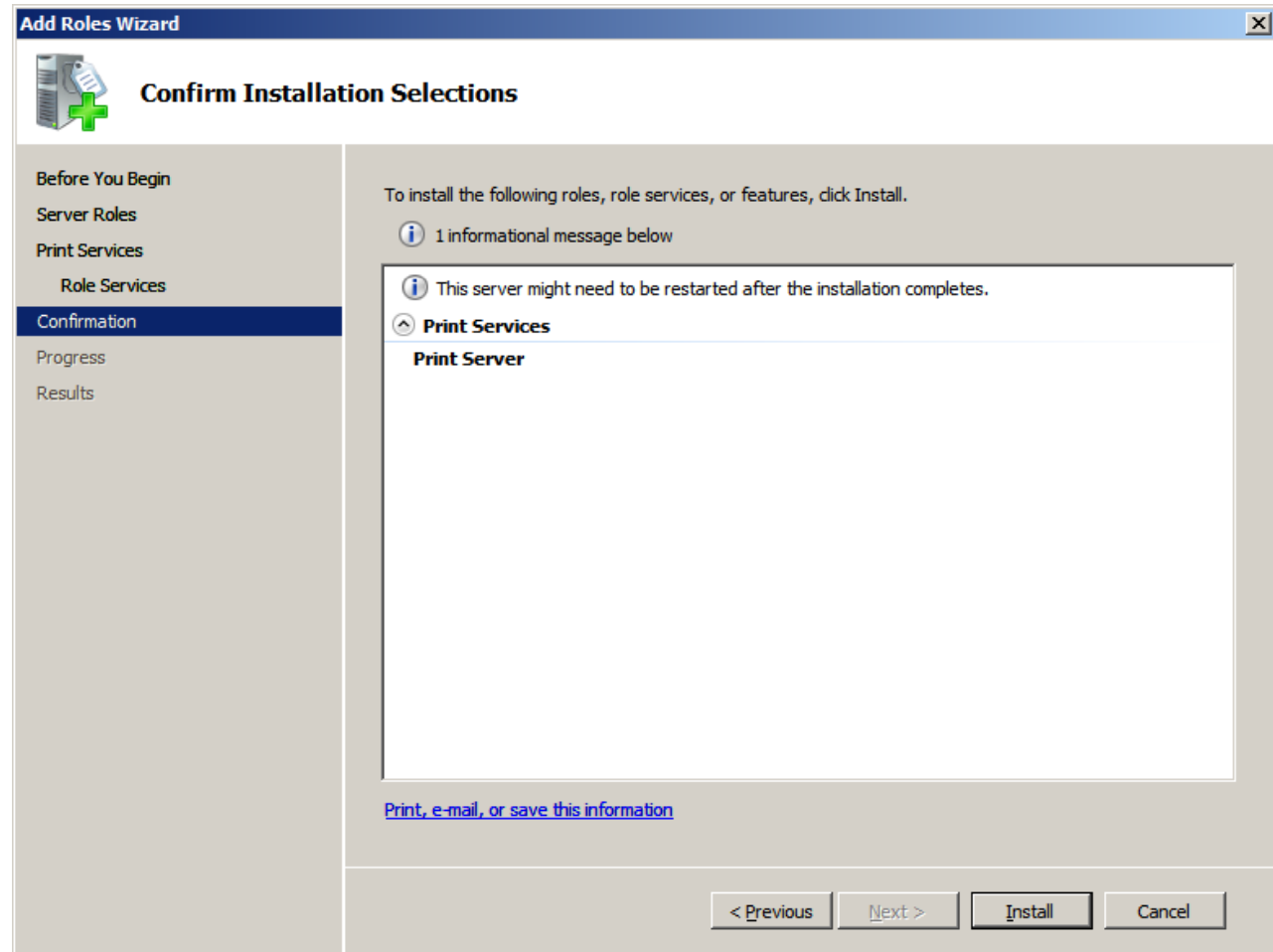
# Select Role Services

Check Print Server and select Next.



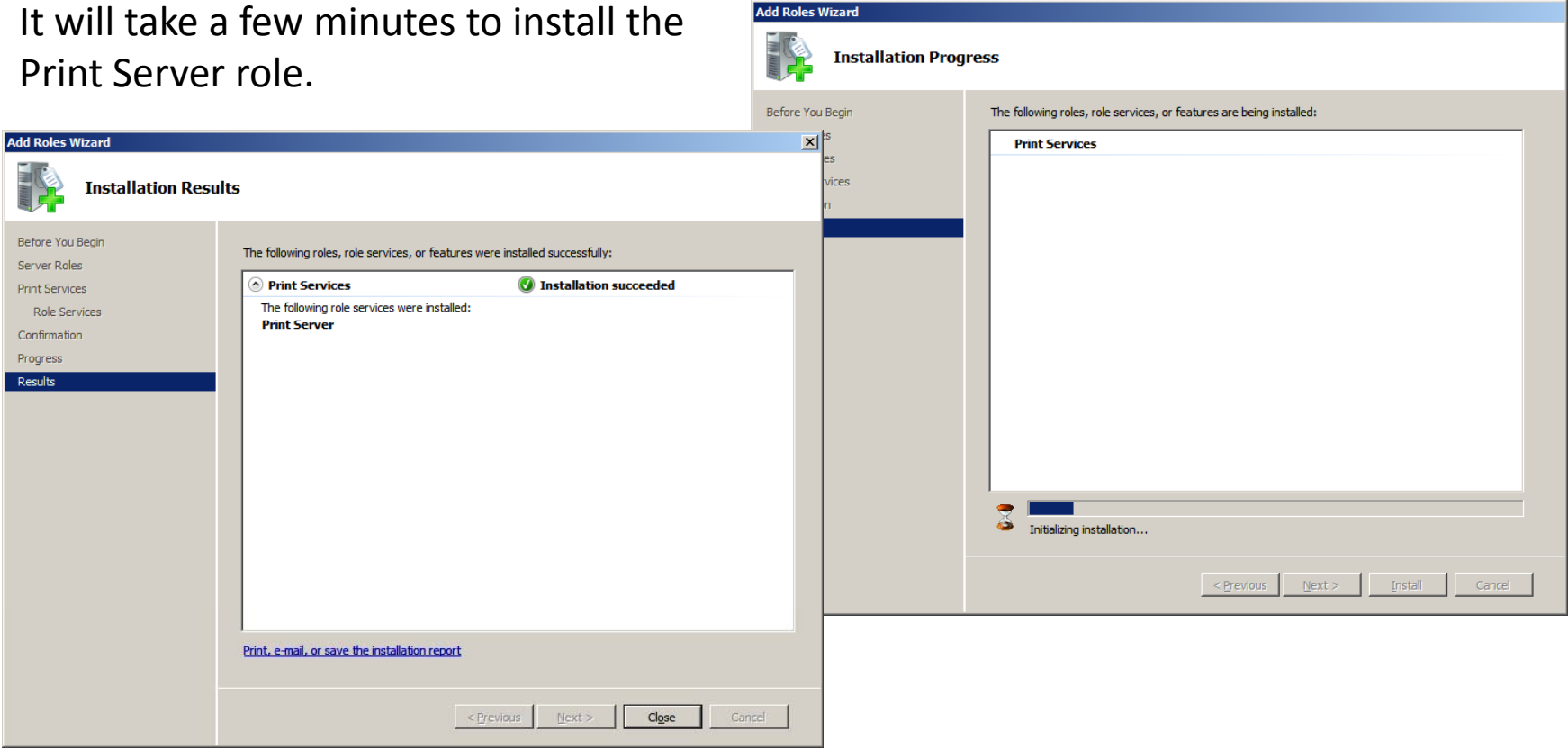
# Conform Installation Selections

Confirm and install the role.



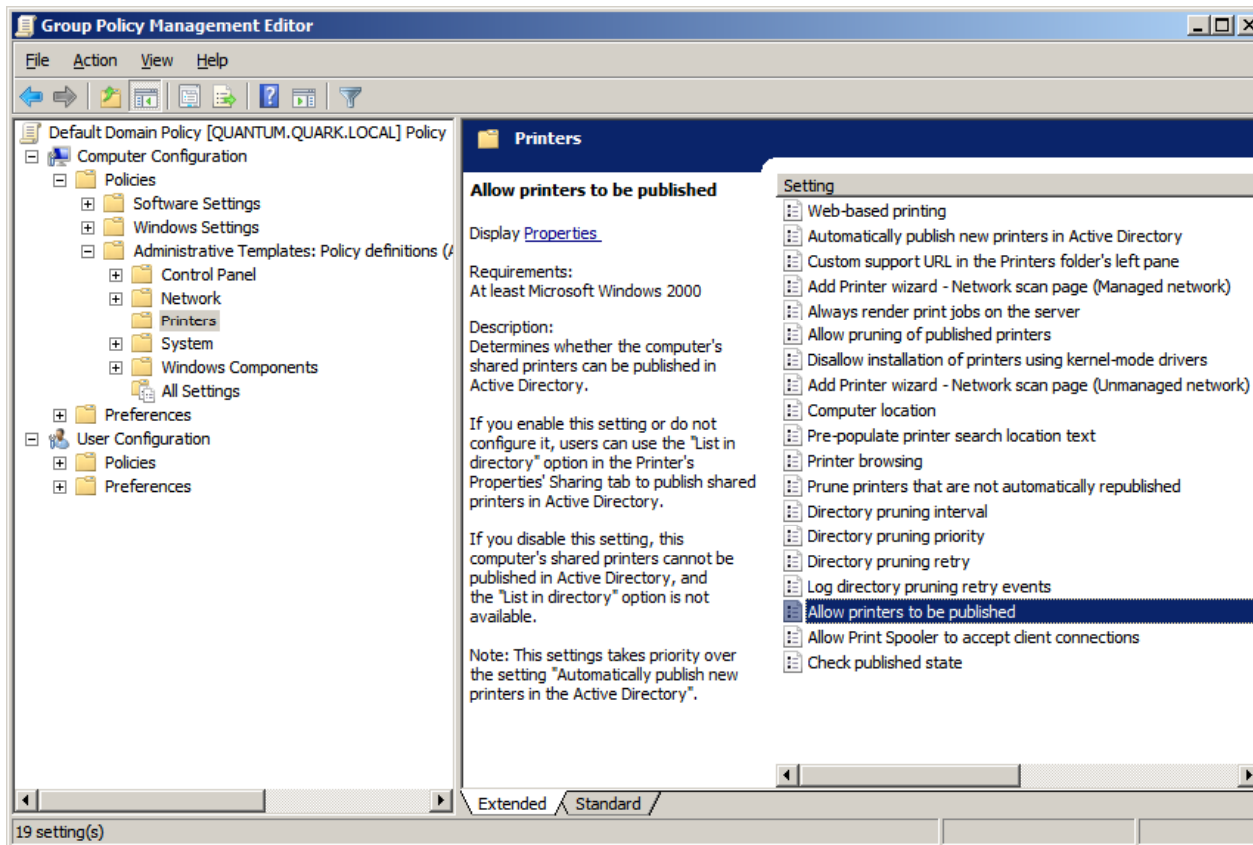
# Installation

It will take a few minutes to install the Print Server role.



# Allow Printers to be Published

Open the Group Policy Management Editor and right click on the Default Domain Policy and choose Edit from the menu. In the new window, we will expand the folders for Computer Configuration/Policies/Administrative Templates/Printers in the left pane.

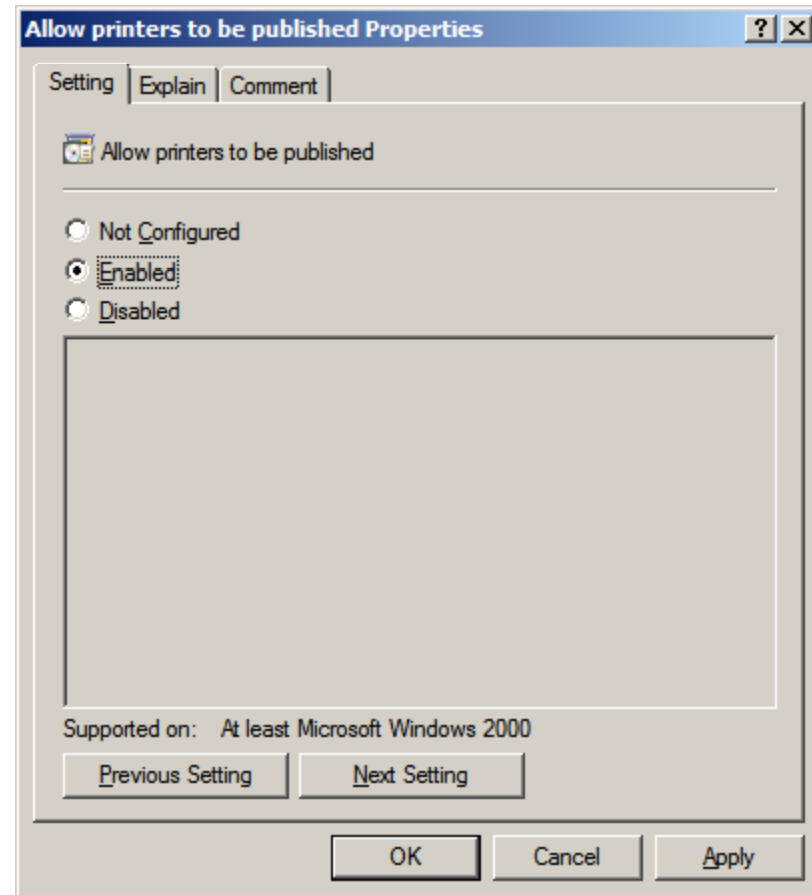


In the right pane, we double click on Allow Printers to be published.



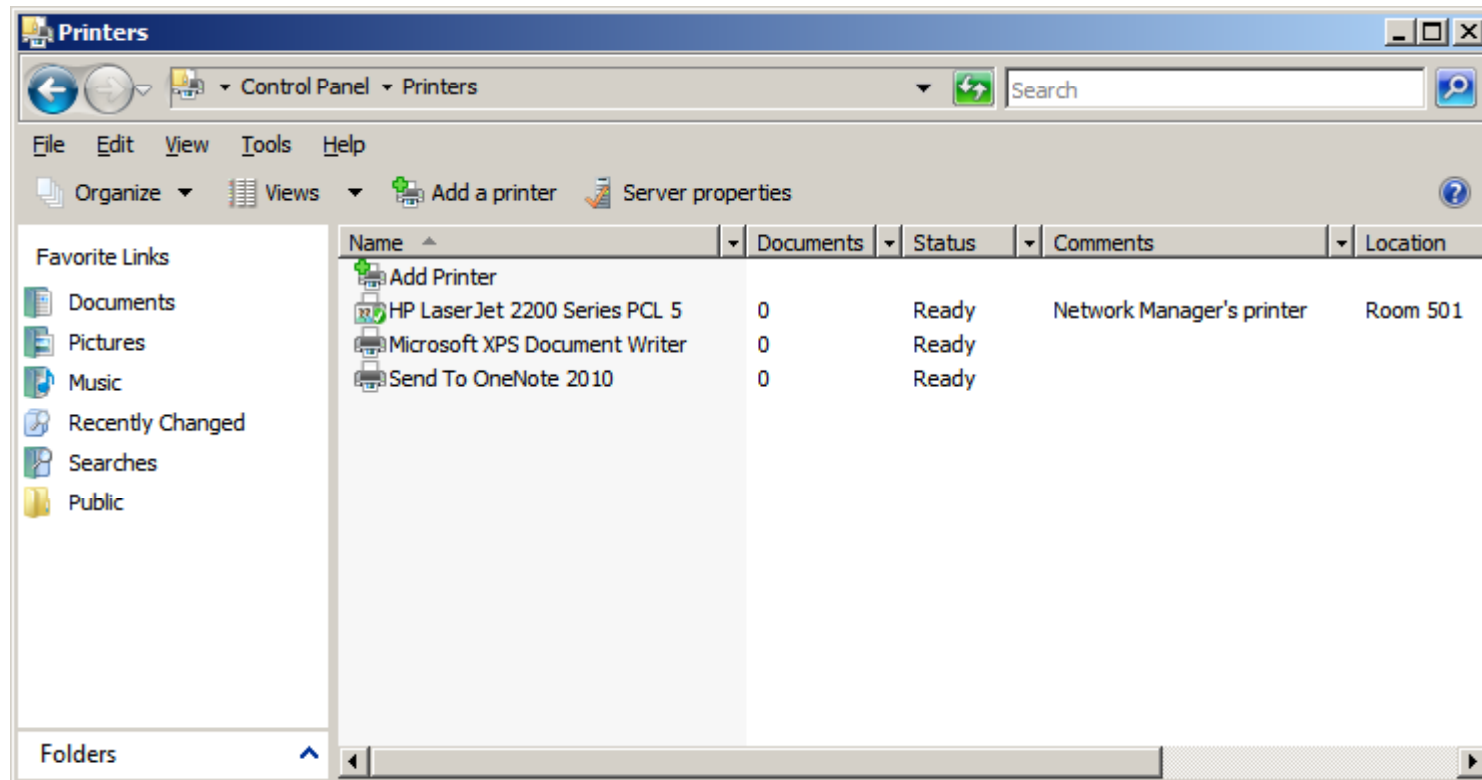
# Setting Tab

Enable the setting to allow the printers to be published.



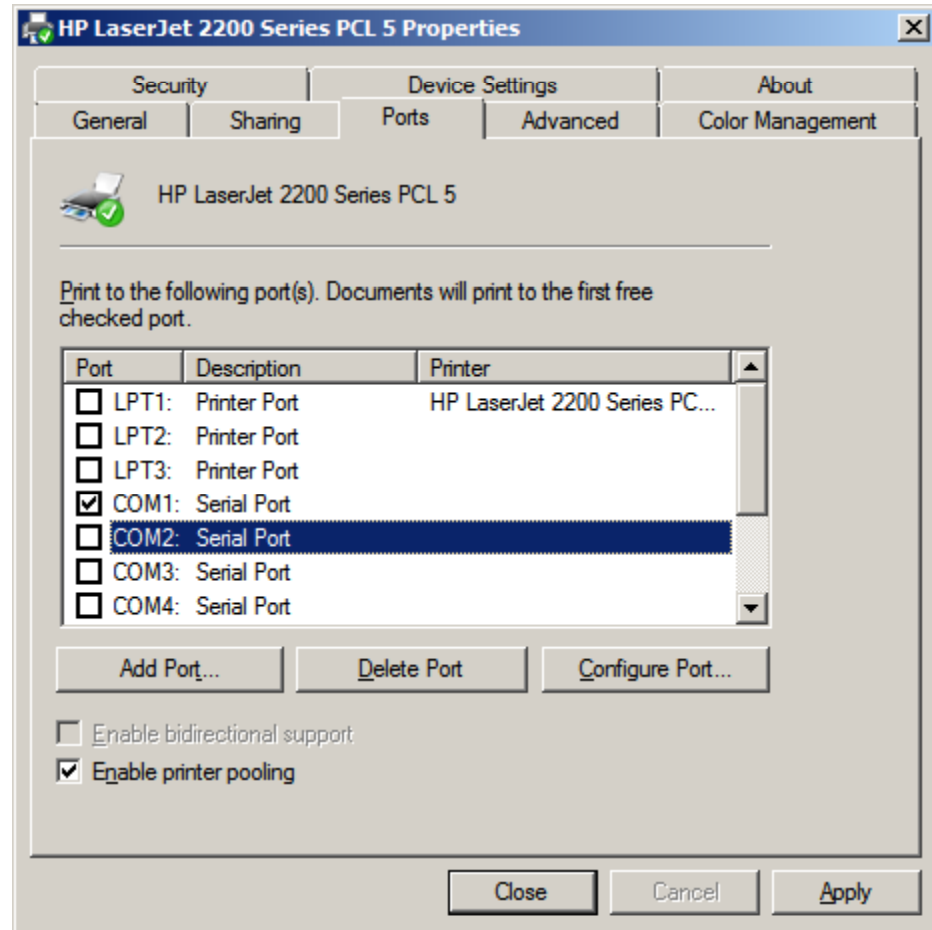
# Open a Printer's Properties

We can configure the printer pooling by opening the Printers window on the server. Right click on the printer and open the Properties window.



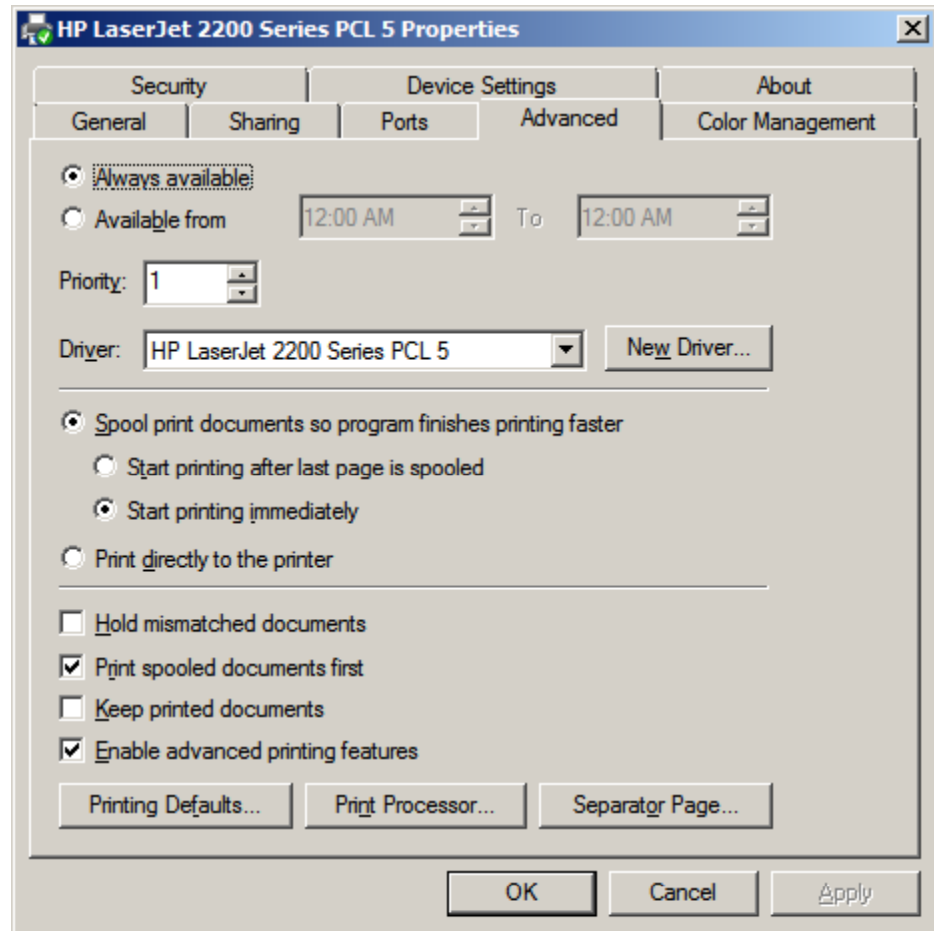
# Configure Printer Pooling

Open the Ports tab on the printer's Properties window and we can choose on the COM ports not being used.



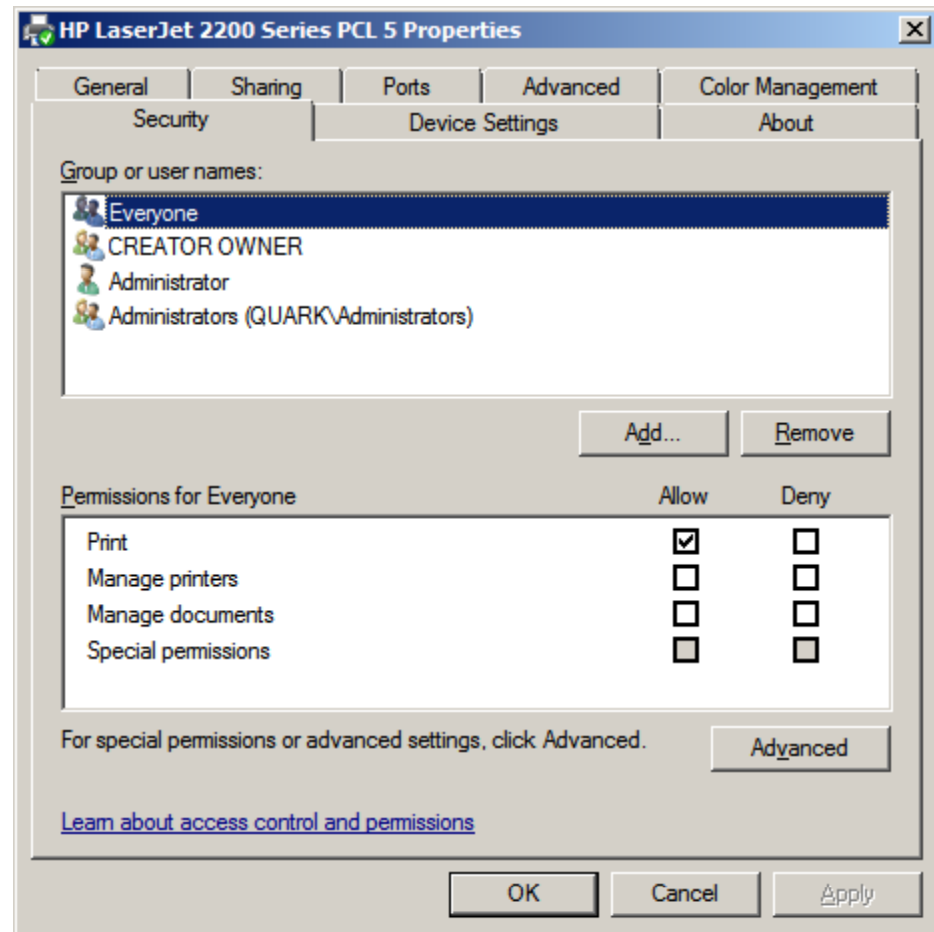
# Printers Properties - Advanced Tab

We can schedule the printer's priority on the Advanced tab of the Properties window.



# Printers Properties – Security Tab

Open the Security tab and we see that presently everyone is allowed to print. We could modify this arrangement and make the printer only available to a group or specific users.



# Print Management

Open the Administrative Tools menu and pick Print Management. We can see the printer installed on our server. In many offices, there will be more than one. We can observe the status of the network printers, the number of print jobs, and cancel jobs from the server.

