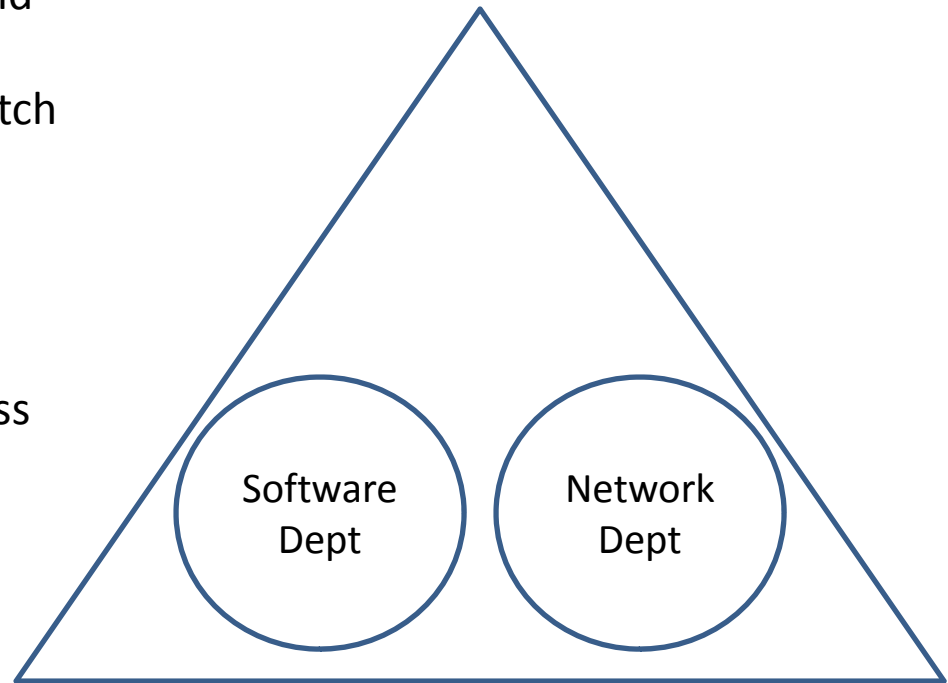


Setting a Static IP in Windows XP

April 23, 2010

Who Uses Static TCP/IP Addresses?

1. Organizations that no longer use peer to peer networks and move to server client set-ups will use IP addresses that match the computer name.
2. Static IP is best for name resolution such as for DNS servers, where having the machine change it's IP address at each startup would be inefficient.



Bigorganization.com

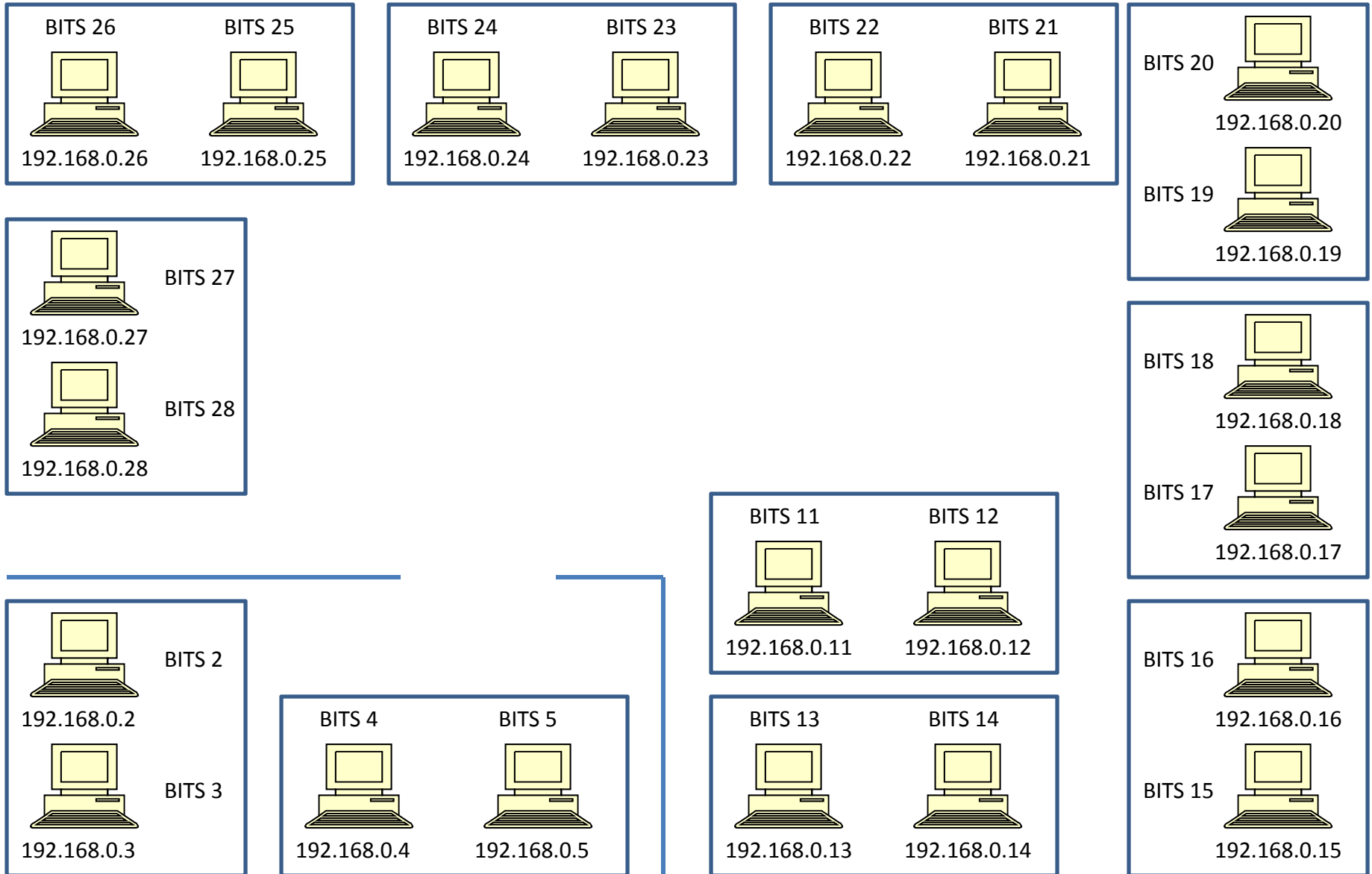
Retrieve the TCP/IP Data from the ISP and from the LAN Diagram

1. Obtain a static IP address from the Internet Server Provider (ISP)
2. Obtain a Primary and Secondary DNS IP address from the ISP
3. Get the computer IP address from the Local Area Network (LAN) diagram on the next page. In this exercise, we will be setting up BITS17.

Gateway address:	192.168.0.1
Primary DNS:	209.18.47.61
Secondary DNS:	209.18.47.62



The LAN Diagram



Setting Static IPs in Windows XP

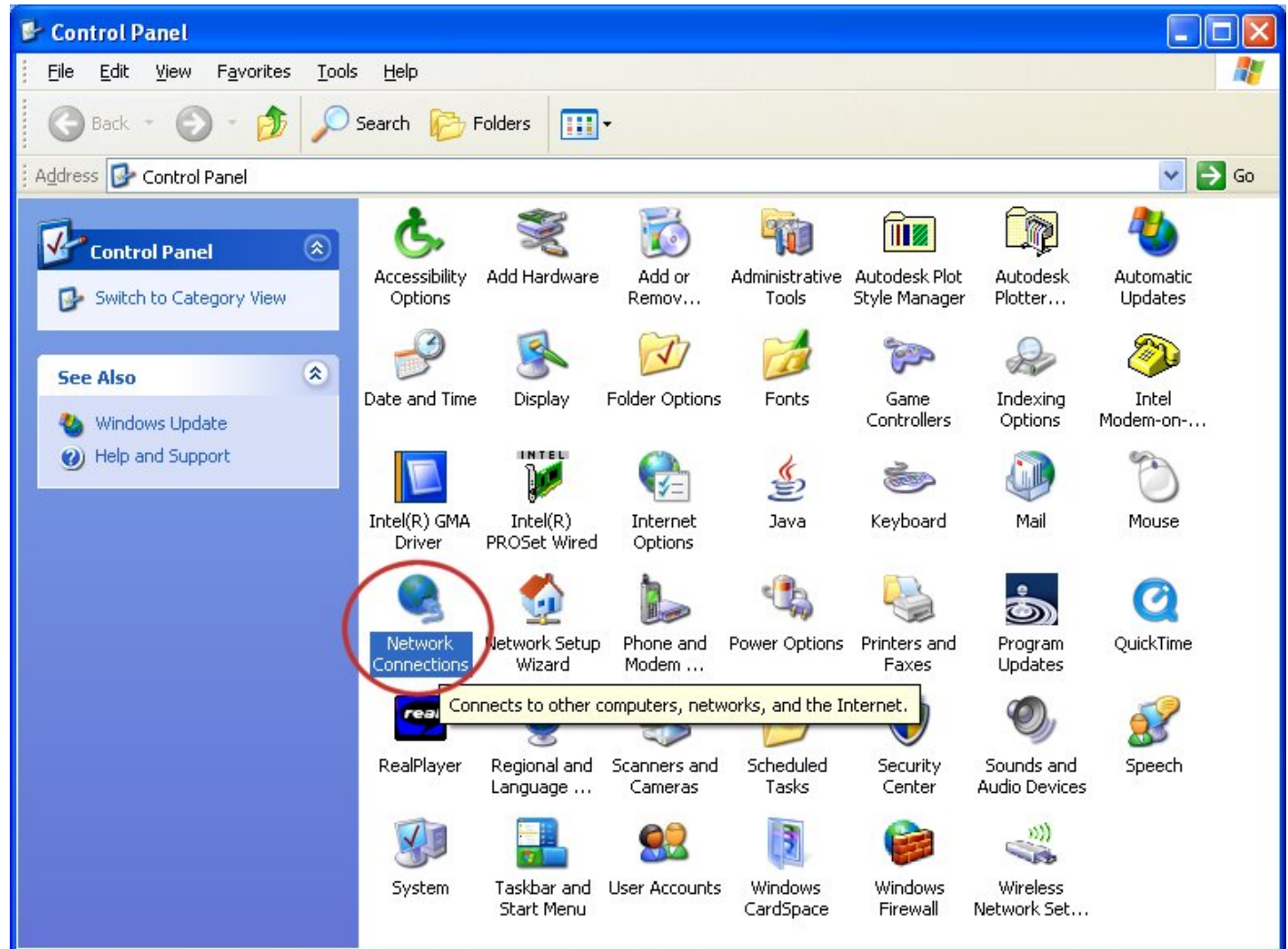
To access the window to change from Dynamic Host Configuration Protocol (DHCP) to Static IP, we press the round Start Button icon on the lower left corner of the Windows' desktop.

Then we select the Control Panel command button on the Start Menu.



The Control Panel Window

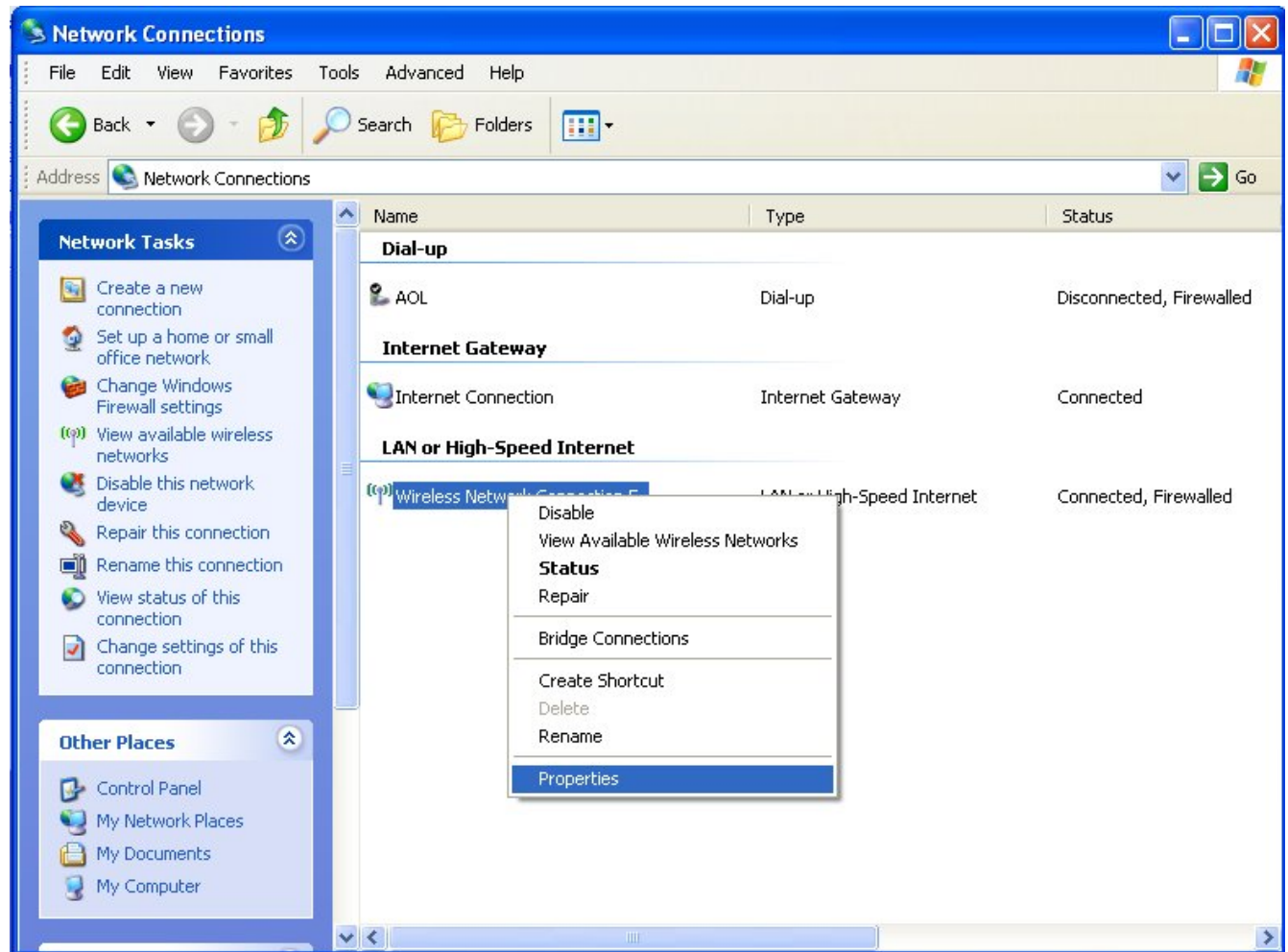
Next, we pick the Network Connections hyperlink.



The Network and Sharing Center Window

In the Network and Sharing window, we can see the vertical navigation bar on the left side of the dialogue box.

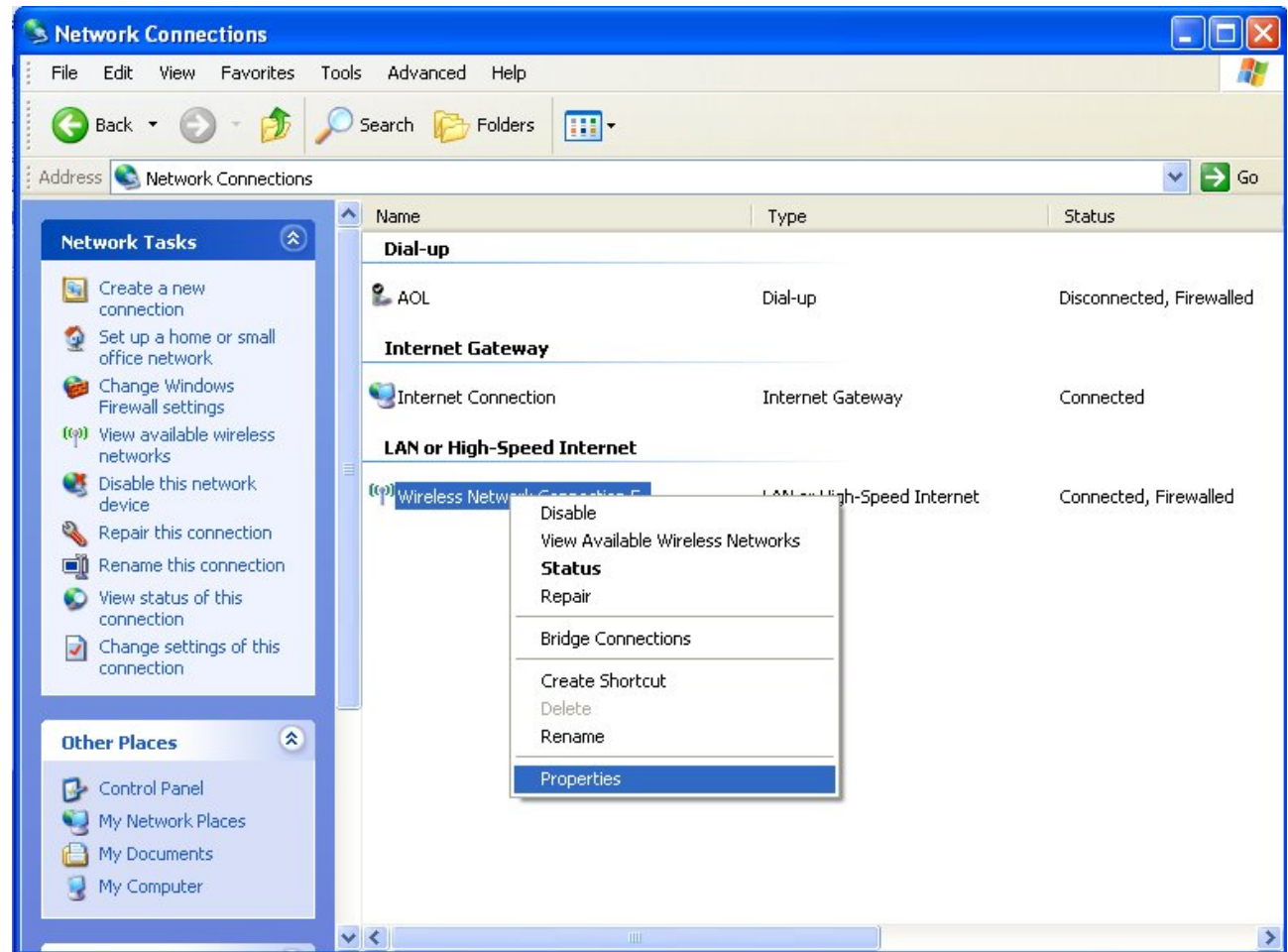
We now pick the Change adapter setting hyperlink.



The Local Area Connection Status Window

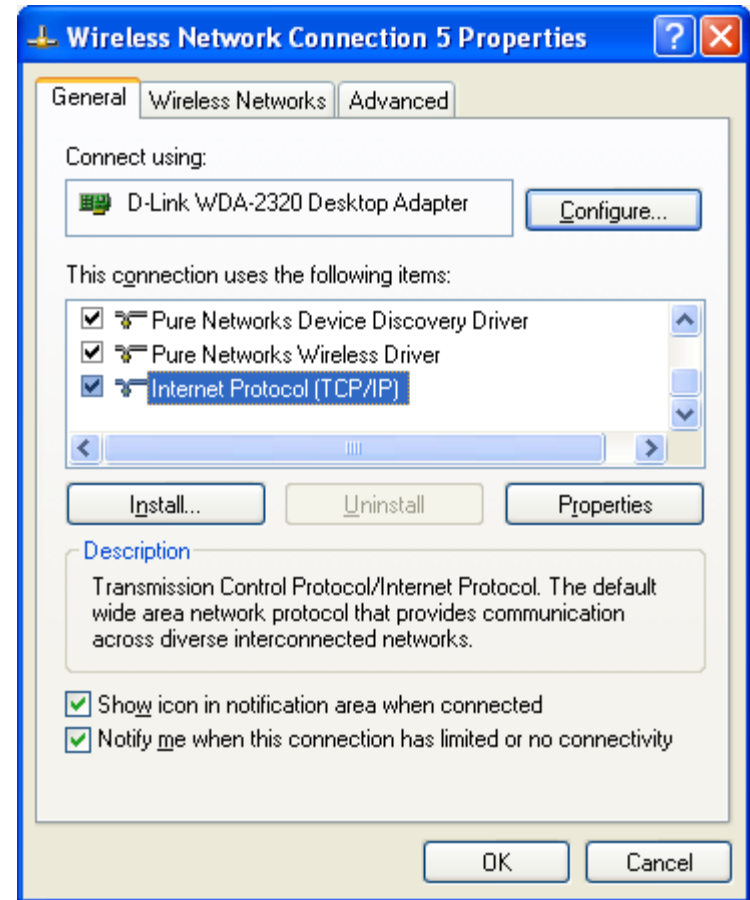
The Network Connection dialogue box gives the technician a view of the types of connections on the computer such as dial up, wired and wireless.

To change from DHCP to Static IP, we right click on the wireless connection and select Properties from popup menu.



Local Area Connection Properties

As highlighted in blue, we double click on the Internet Protocol (TCP/IP) phrase in the connection list box.



Internet Protocol (TCP/IP) Properties

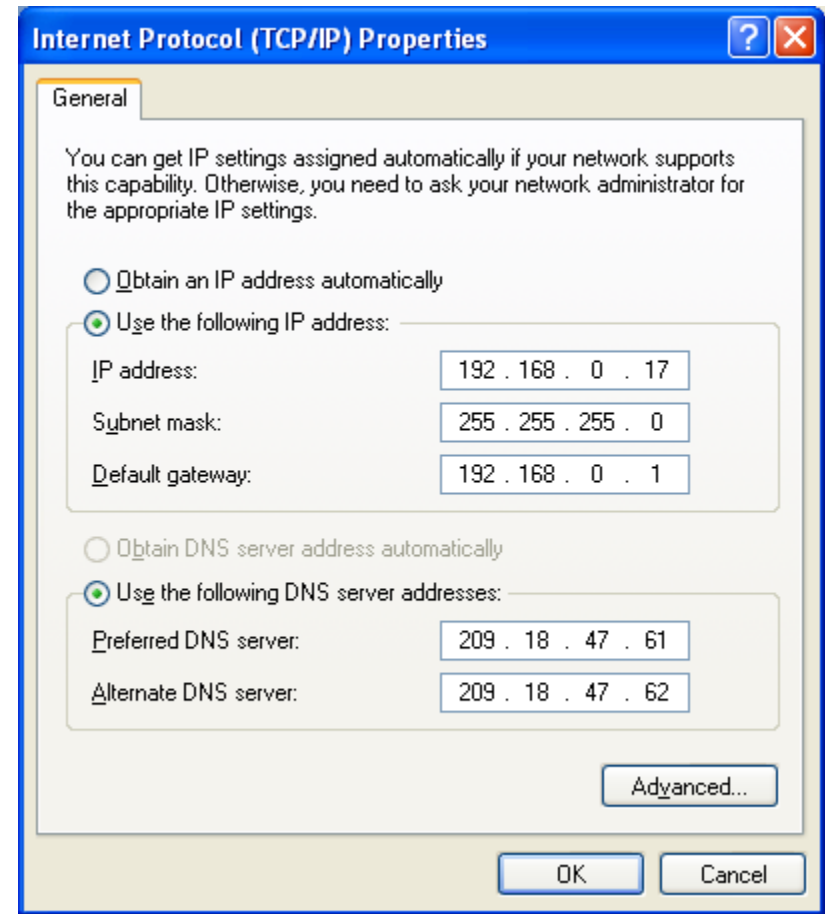
We first select the “Use the following IP address:” radial button.

For the IP address, we retrieve that information from our Local Area Network (LAN) diagram. In this example, our computer is 192.138.0.17.

This is a standard Class C network, so we will use 255.255.255.0 for the Subnet mask.

The Default Gateway is our router’s IP address , which is 192.168.0.1 and is the first address on the network.

The Preferred and Alternate DNS Server addresses are obtained typically from the ISP.



Close and Save Setting

To close and save the Settings, press the OK button on the Internet Protocol (TCP/IP) Properties window.

We press OK on the Local Area Connection Properties window.

We close the Local Area Connection Status dialogue box and the Local Area Connection window.

To quickly check your connection, we can Ping the router and then we visit the World Class CAD website on the Internet to check the Static IP setup.

