

# Setting Up a Print Server

May 24, 2010

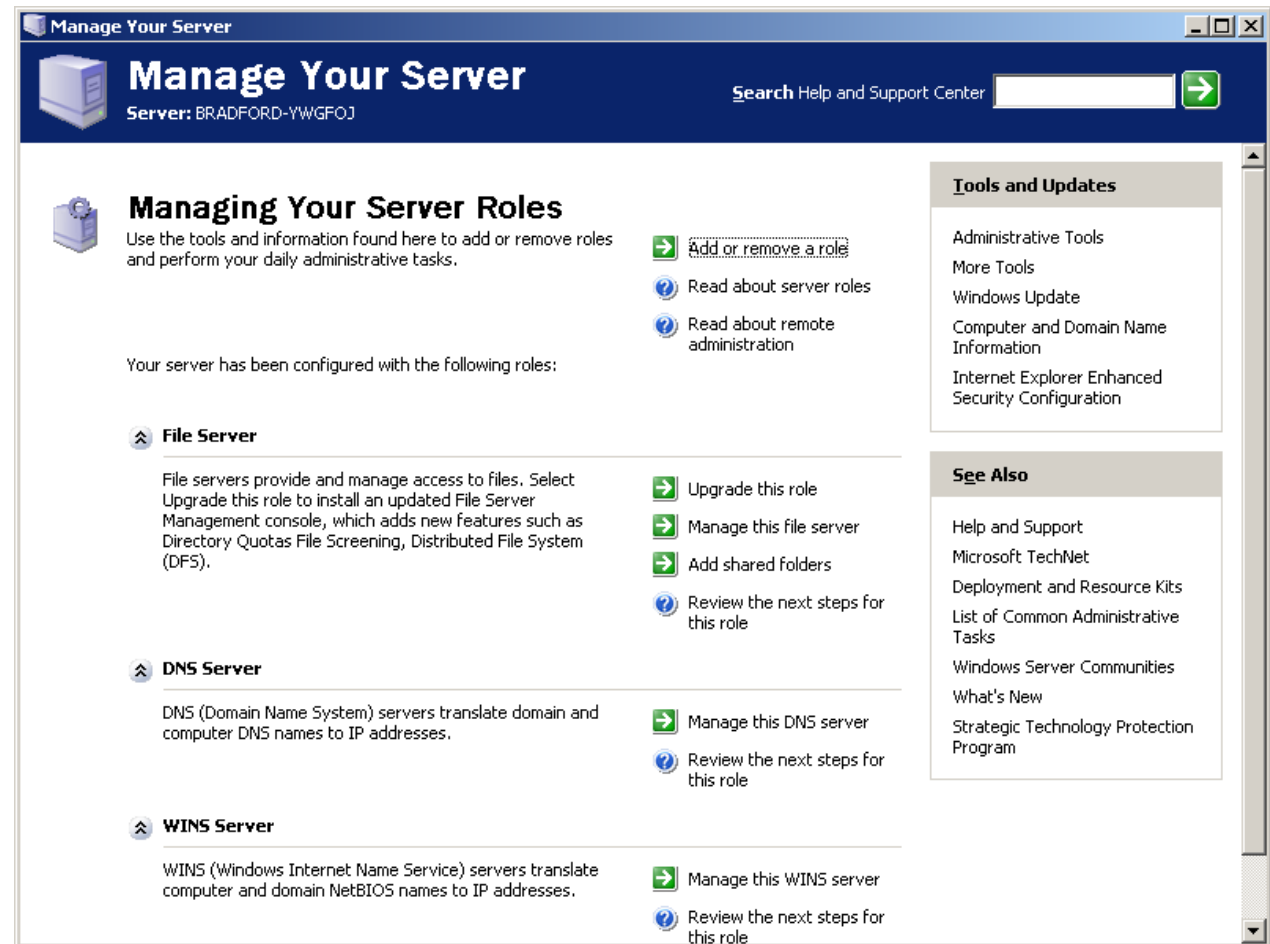
# Start Menu

We begin setting up the print server by selecting the Start button and then picking Administrative Tools. Then we choose Manage Your Server.



# Manage Your Server

In the Manage Your Server window, we choose the Add or remove a role hyperlink.



The screenshot shows the 'Manage Your Server' window for server 'BRADFORD-YWGFOJ'. The main content area is titled 'Managing Your Server Roles' and provides instructions on how to add or remove roles. It lists three installed roles: File Server, DNS Server, and WINS Server. Each role has a description and a list of actions such as 'Upgrade this role', 'Manage this file server', and 'Review the next steps for this role'. A right-hand sidebar contains sections for 'Tools and Updates' and 'See Also', listing various administrative tools and support resources.

**Manage Your Server**  
Server: BRADFORD-YWGFOJ

**Managing Your Server Roles**  
Use the tools and information found here to add or remove roles and perform your daily administrative tasks.

[Add or remove a role](#)

- Read about server roles
- Read about remote administration

Your server has been configured with the following roles:

**File Server**

File servers provide and manage access to files. Select Upgrade this role to install an updated File Server Management console, which adds new features such as Directory Quotas File Screening, Distributed File System (DFS).

- Upgrade this role
- Manage this file server
- Add shared folders
- Review the next steps for this role

**DNS Server**

DNS (Domain Name System) servers translate domain and computer DNS names to IP addresses.

- Manage this DNS server
- Review the next steps for this role

**WINS Server**

WINS (Windows Internet Name Service) servers translate computer and domain NetBIOS names to IP addresses.

- Manage this WINS server
- Review the next steps for this role

**Tools and Updates**

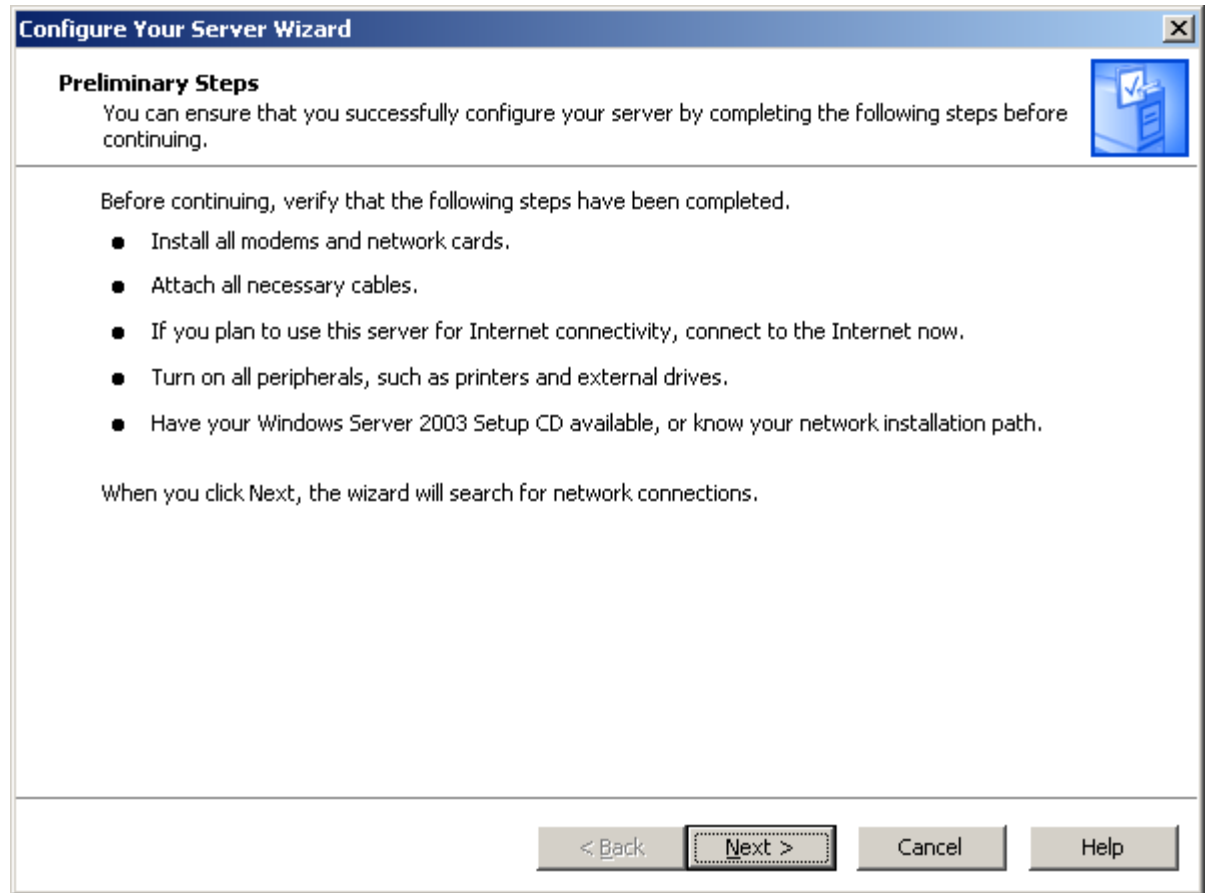
- Administrative Tools
- More Tools
- Windows Update
- Computer and Domain Name Information
- Internet Explorer Enhanced Security Configuration

**See Also**

- Help and Support
- Microsoft TechNet
- Deployment and Resource Kits
- List of Common Administrative Tasks
- Windows Server Communities
- What's New
- Strategic Technology Protection Program

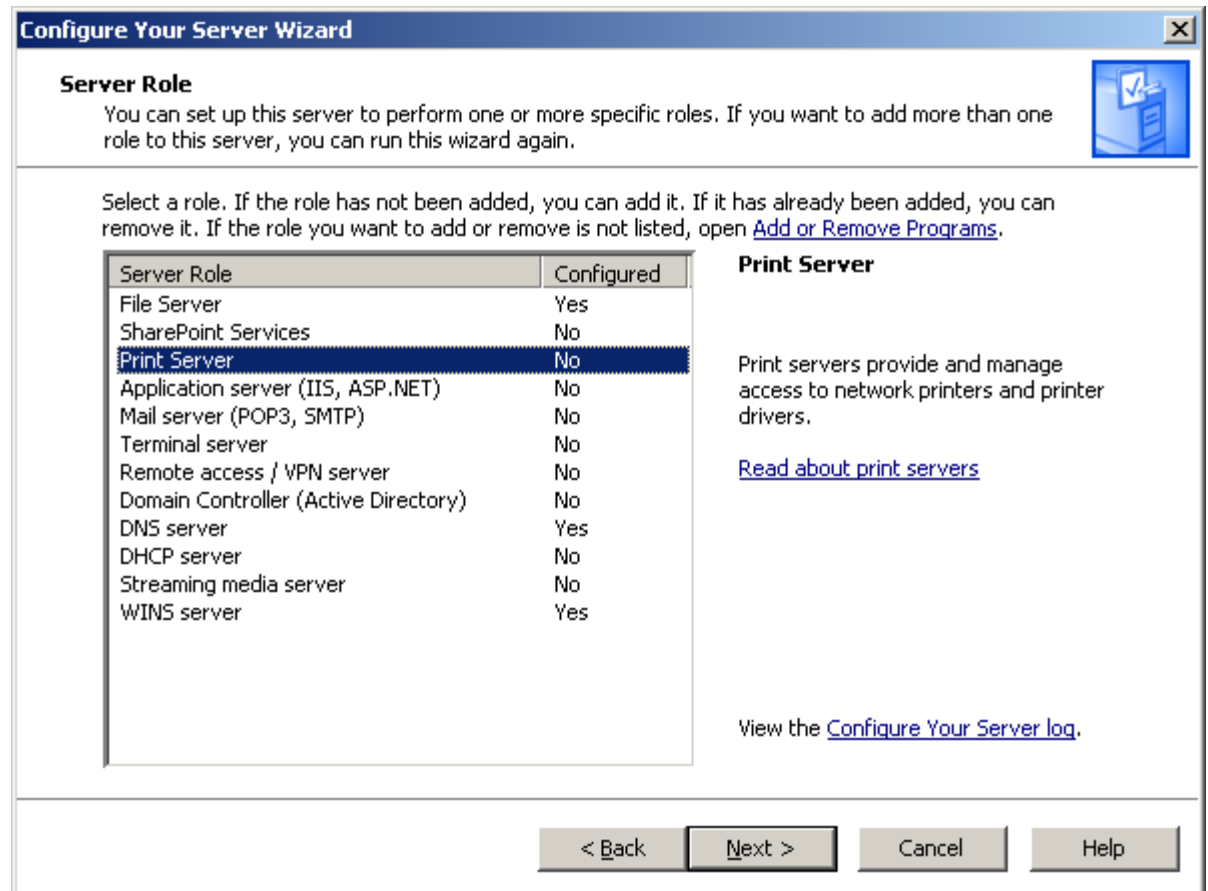
# Configure Your Server Wizard

We press the Next button to continue to set up the print server.



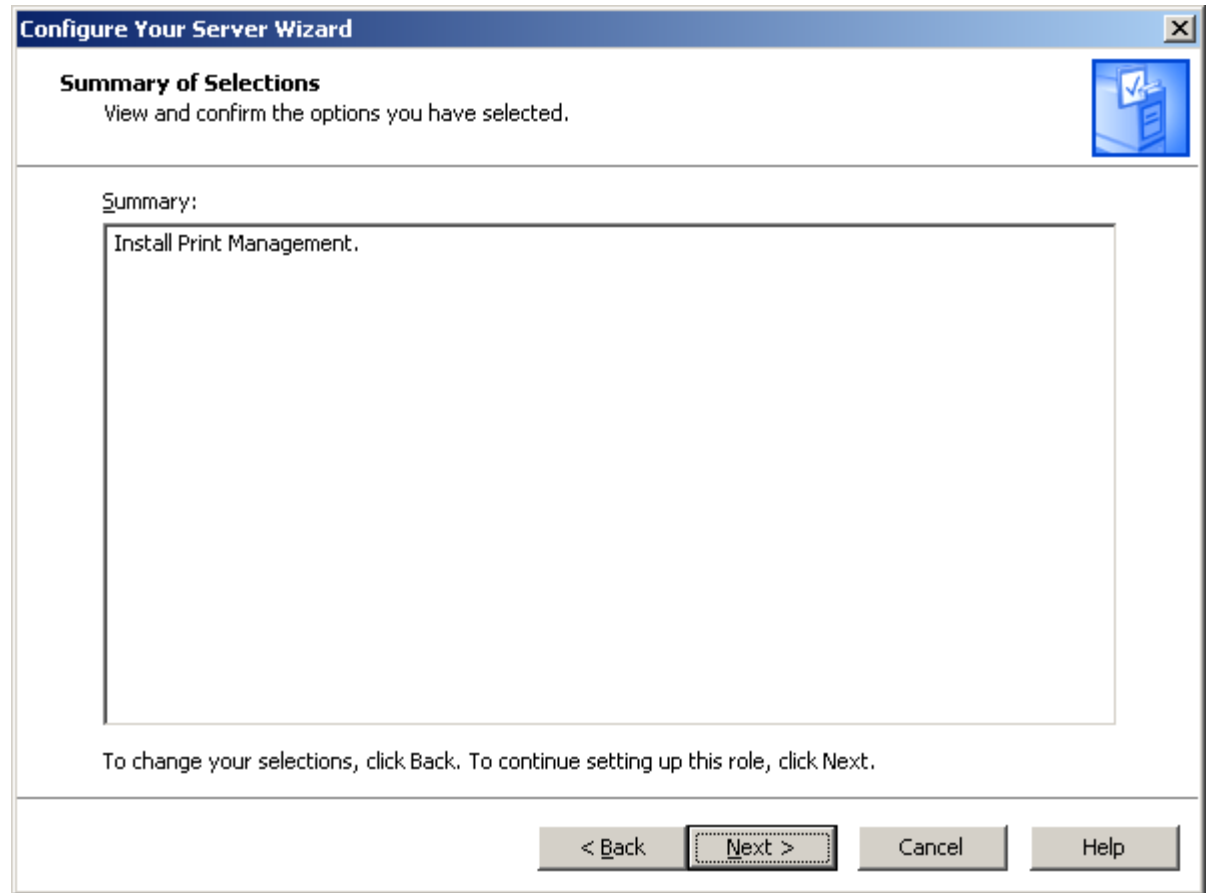
# Server Role

Now at the Server Role window, we opt for the Print Server and click on the Next button to proceed.



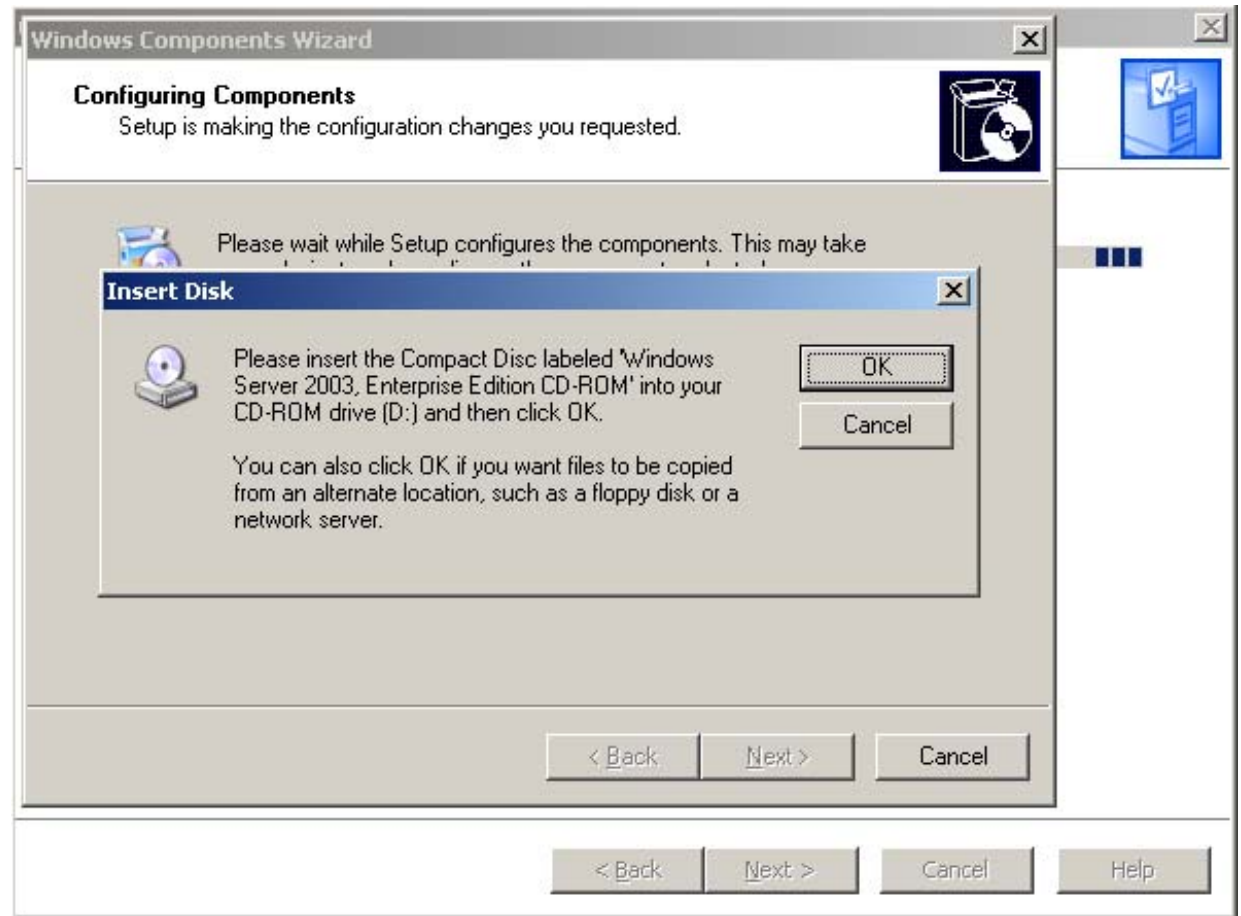
# Install Print Management

We choose the Next command button to advance.



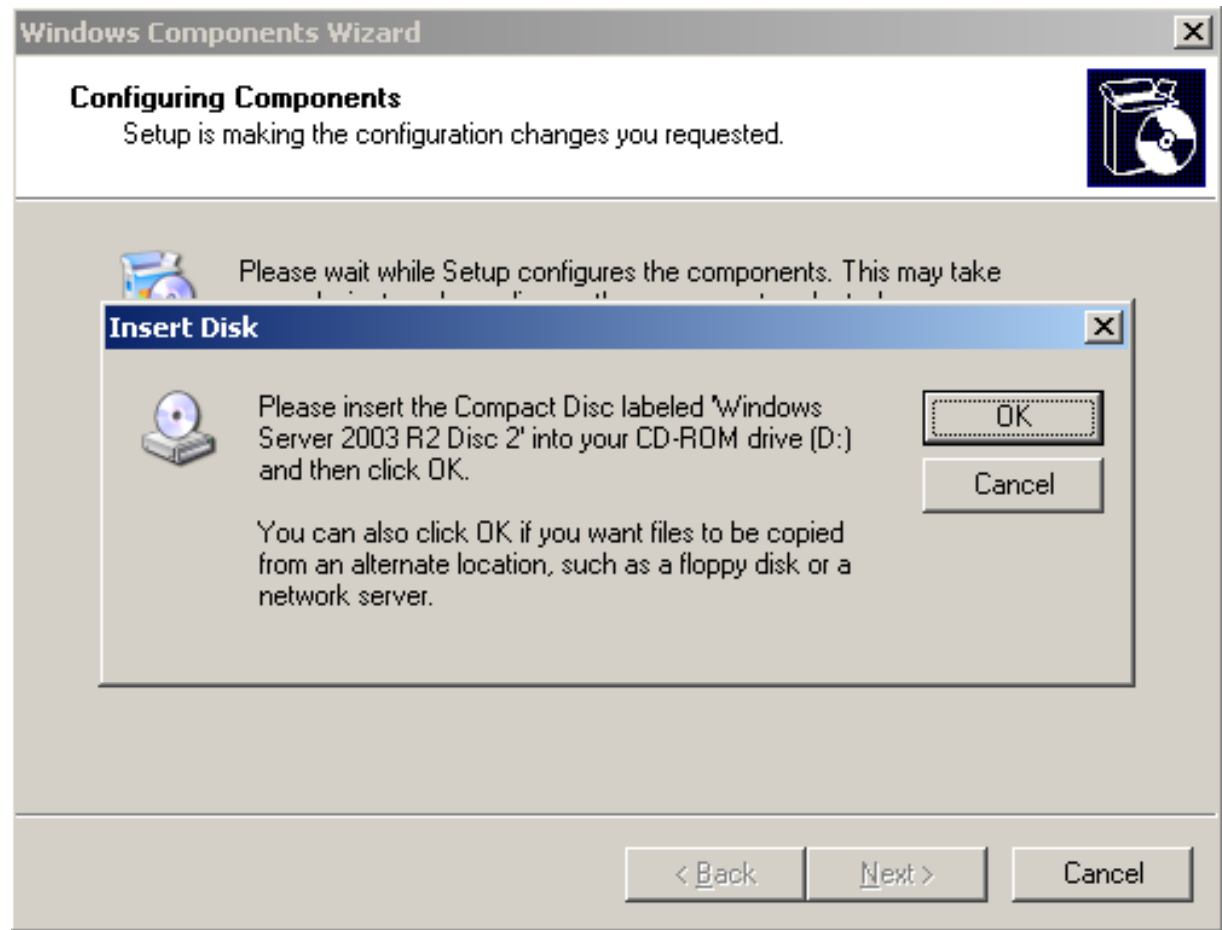
# Configuring Components

When configuring components, we are prompted to insert the Windows Server CD.



# Configuring Components (cont.)

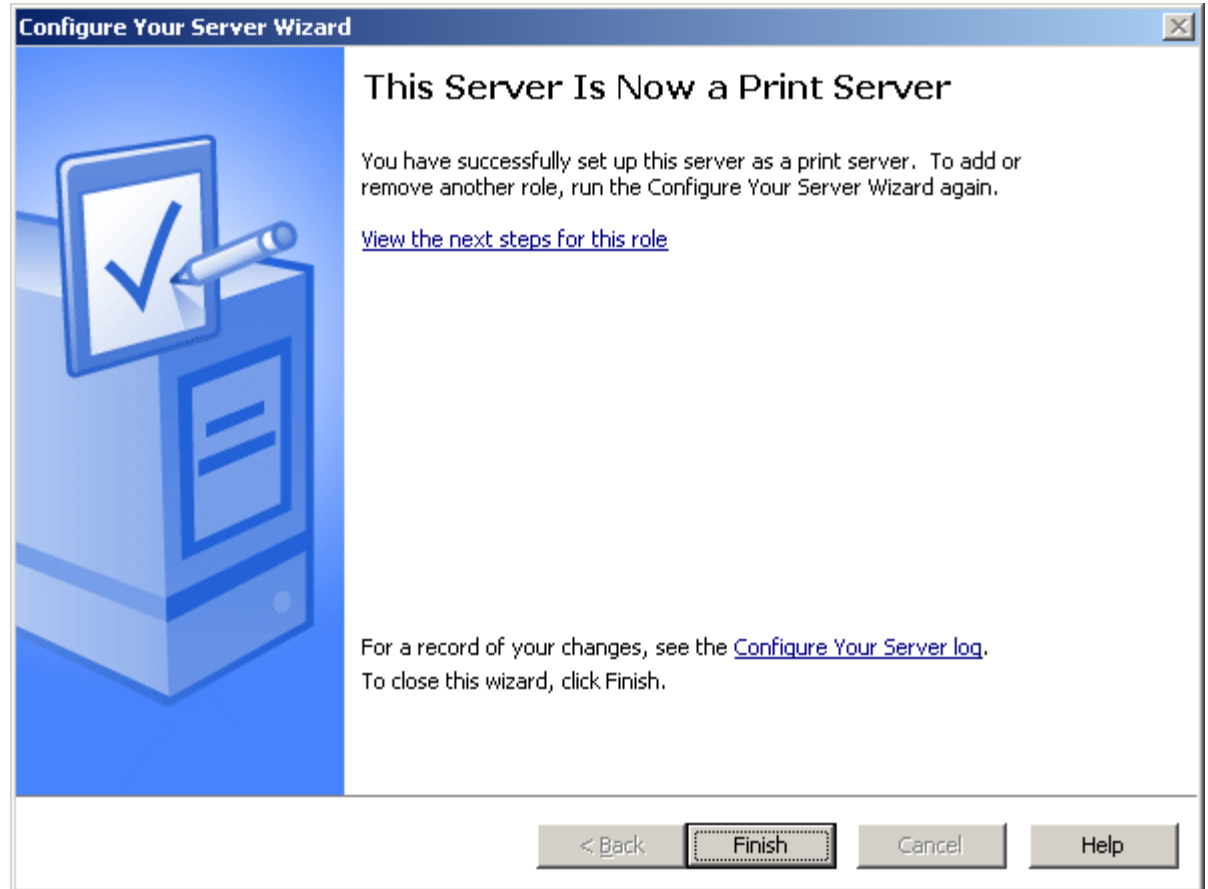
Again, we are asked to insert the second Windows Server CD and press OK.





# A Print Server

Now, the print server is loaded and we can press the Finish button.



# Launch Print Management

To manage the network printers, we select the Start button and then pick Print Management.



# Print Management Console

The Print Management Console shows our network printer.

