

A Windows XP Professional Client Joining a Domain

May 26, 2010

Joining a Domain

Domain controllers give the organization centralized jurisdiction over the members of the network. With Windows' Active Directory, we have managed access to files through secure pathways. We have administrators to supervise read and write permissions. We can better store the organization's intellectual property and financial data and redirect the files to connected offsite storage for protection from catastrophic damage to the local machines.

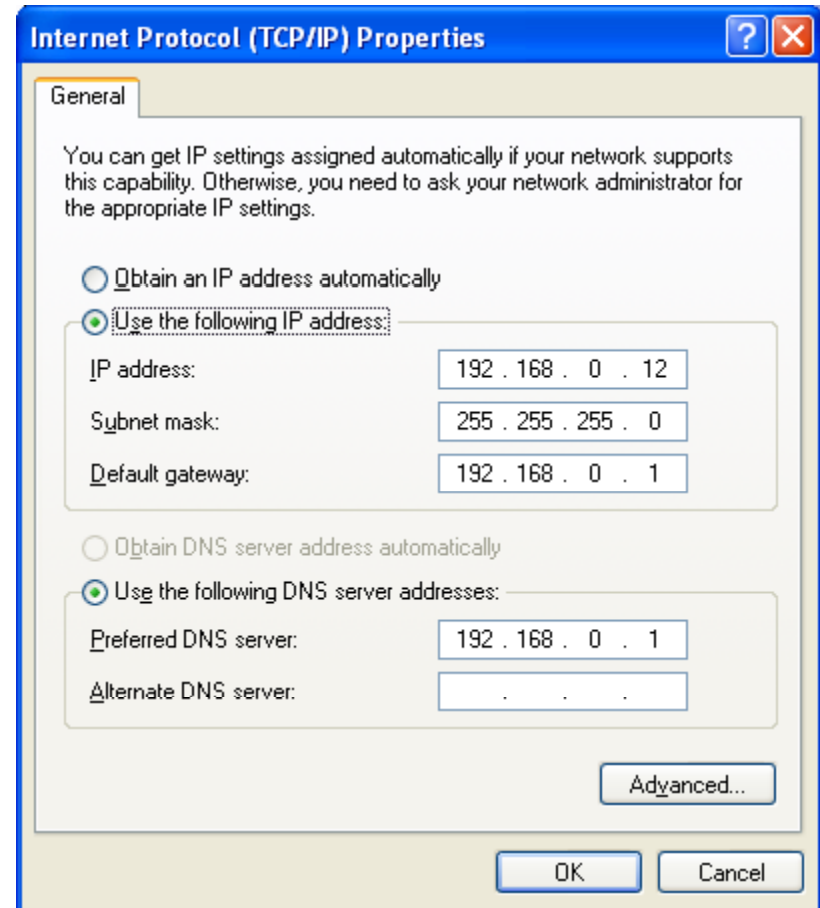
Now that we have a domain controller, we want to connect to the server.

Active Directory Benefits

- Client – server network
- Kerberos security
- Administrator controlled
- Centralized storage
- Easy file transfers

Client Computer TCP/IP Properties

On the client computer, we need to check the Network Interface Card's (NIC) Internet Protocol (TCP/IP) properties. The server's Intranet NIC has an IP address of 192.168.0.1, so our gateway and DNS server IP address point to that number. The client IP address can be any figure from 192.168.0.2 to 192.168.0.254.



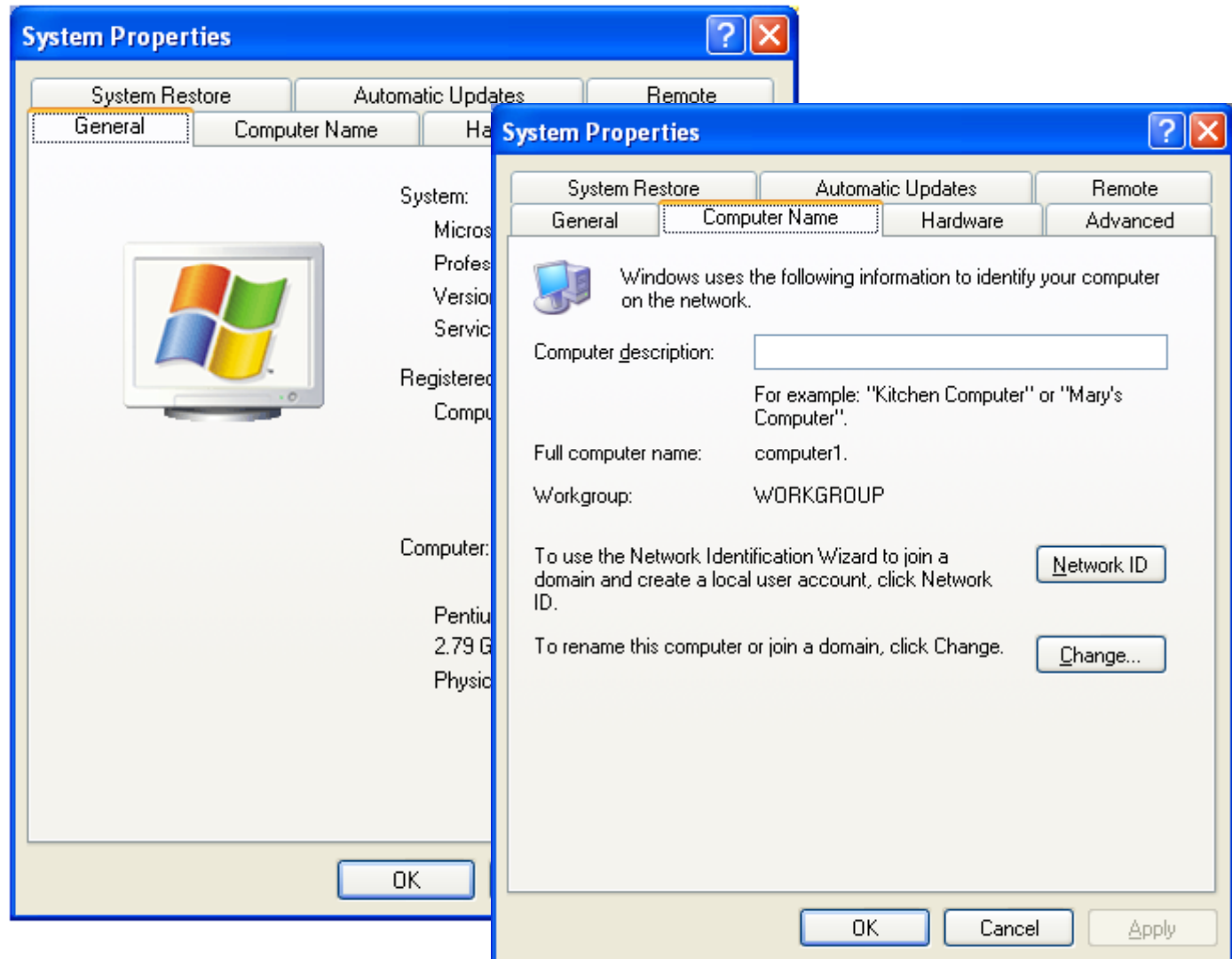
Start Menu

Now, we right click on the My Computer hyperlink in the Start menu and we select Properties.



System Properties

The System Properties window will appear and we will choose the Computer Name tab and the Network ID command button.



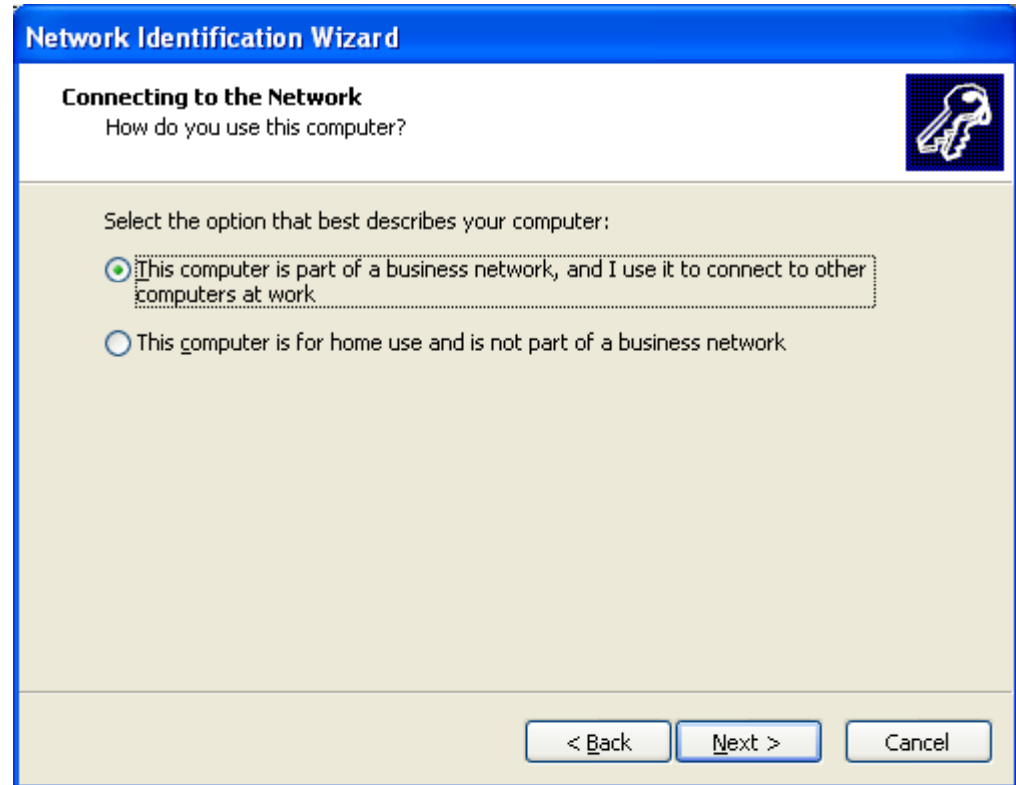
Identification Wizard

The Welcome to the Network Identification Wizard dialogue box greets us and we press the Next button to proceed.



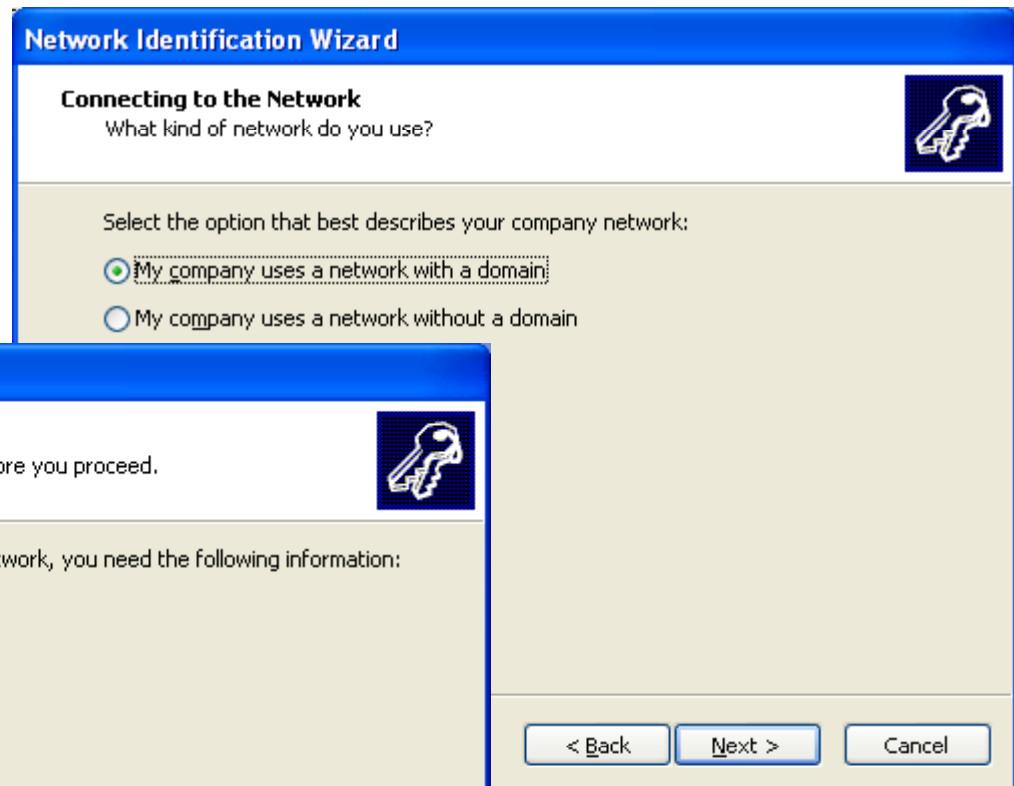
Connecting to the Network

We have two options on this window, one to join a domain and the other to attach ourselves to a home group. We will pick to join a domain at work and we will select Next to continue.



Network Information

Now, we decide to use a network with a domain and when we press the Next button, we are asked to have a username, password and domain name ready. We opt for the Next button to proceed.



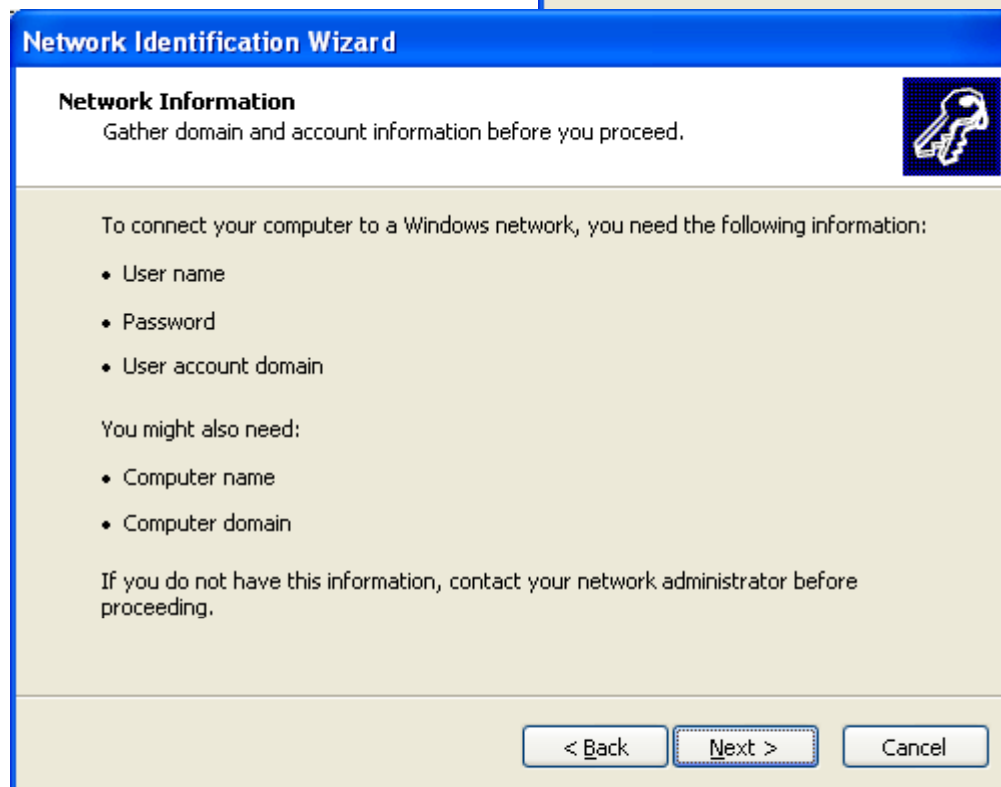
Network Identification Wizard

Connecting to the Network
What kind of network do you use?

Select the option that best describes your company network:

- My company uses a network with a domain.
- My company uses a network without a domain.

< Back Next > Cancel



Network Identification Wizard

Network Information
Gather domain and account information before you proceed.

To connect your computer to a Windows network, you need the following information:

- User name
- Password
- User account domain

You might also need:

- Computer name
- Computer domain

If you do not have this information, contact your network administrator before proceeding.

< Back Next > Cancel

User Account and Domain Information

The User Account and Domain Information dialogue box needs to contain a valid username, password, and domain name. We choose the Next button to advance.

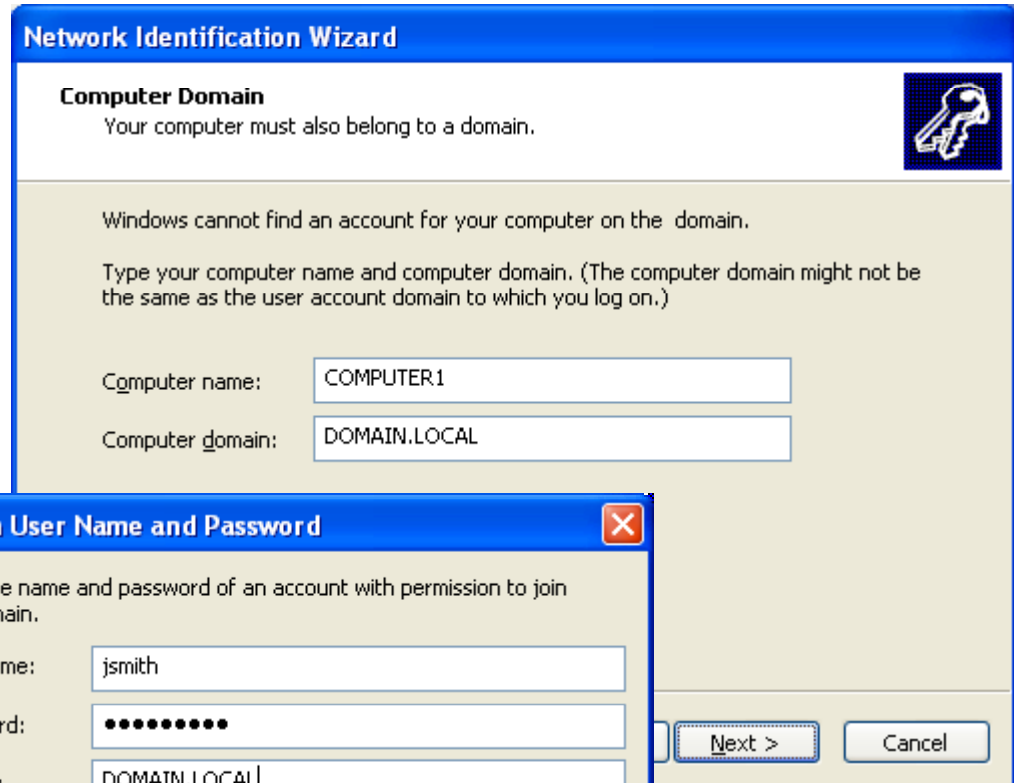


The image shows a screenshot of the 'Network Identification Wizard' dialog box. The title bar is blue and contains the text 'Network Identification Wizard'. Below the title bar, the dialog has a white header area with the title 'User Account and Domain Information' and a sub-header 'A user account gives you access to files and resources on a network.' To the right of the sub-header is a small icon of a key. The main area of the dialog is light beige and contains the following text: 'Type your Windows user account and domain information. If you do not have this information, ask your network administrator.' Below this text are three input fields: 'User name:' with the value 'JSmith', 'Password:' with a masked password of ten dots, and 'Domain:' with the value 'DOMAIN.LOCAL'. At the bottom of the dialog are three buttons: '< Back', 'Next >', and 'Cancel'.

Domain Username and Password

If the server cannot find our account, we will be asked to furnish our computer name and the domain name. After confirmation of this data, we will be prompted for the valid username, password, and domain name again.

This time the account is found and we press the Yes button to continue.



Network Identification Wizard

Computer Domain
Your computer must also belong to a domain.

Windows cannot find an account for your computer on the domain.

Type your computer name and computer domain. (The computer domain might not be the same as the user account domain to which you log on.)

Computer name:

Computer domain:



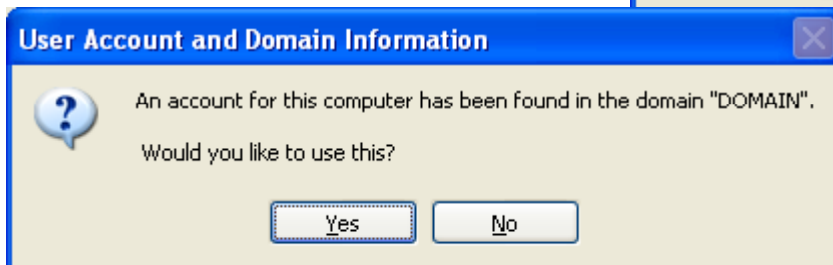
Domain User Name and Password

Type the name and password of an account with permission to join the domain.

User name:

Password:

Domain:



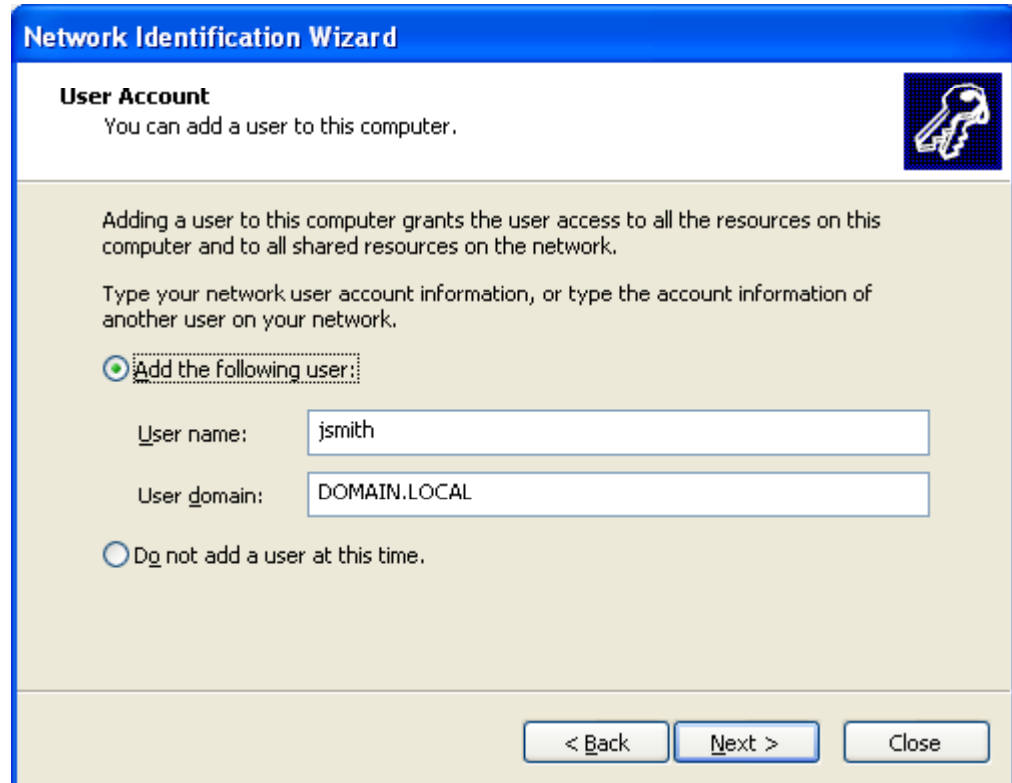
User Account and Domain Information

An account for this computer has been found in the domain "DOMAIN".

Would you like to use this?

User Account

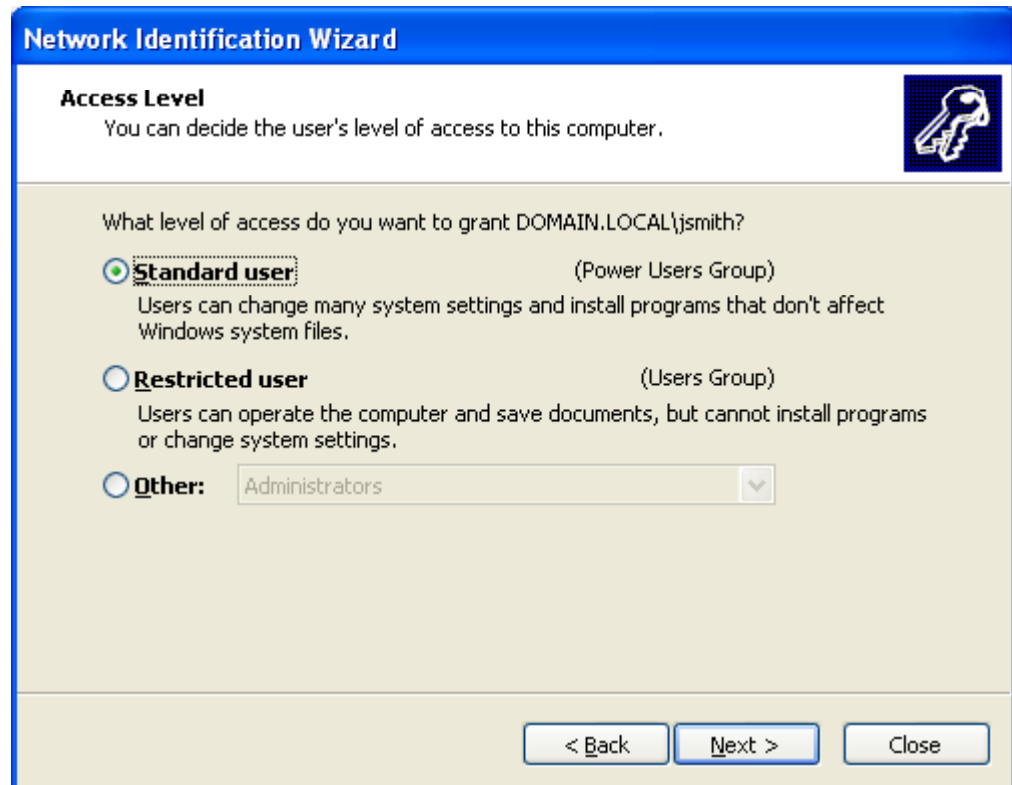
We can add the JSmith User Account to this computer and press the Next button to proceed. This will give the user permissions to use software on this computer. Or, we can leave the JSmith account off this specific computer and restrict the user to just server controlled resources.



The screenshot shows a Windows dialog box titled "Network Identification Wizard" with a blue header bar. Below the header, the title "User Account" is displayed in bold, followed by the text "You can add a user to this computer." and a key icon. The main area contains the following text: "Adding a user to this computer grants the user access to all the resources on this computer and to all shared resources on the network." and "Type your network user account information, or type the account information of another user on your network." There are two radio buttons: the first is selected and labeled "Add the following user:", and the second is labeled "Do not add a user at this time." Below the first radio button, there are two text input fields: "User name:" with the value "jsmith" and "User domain:" with the value "DOMAIN.LOCAL". At the bottom right, there are three buttons: "< Back", "Next >", and "Close".

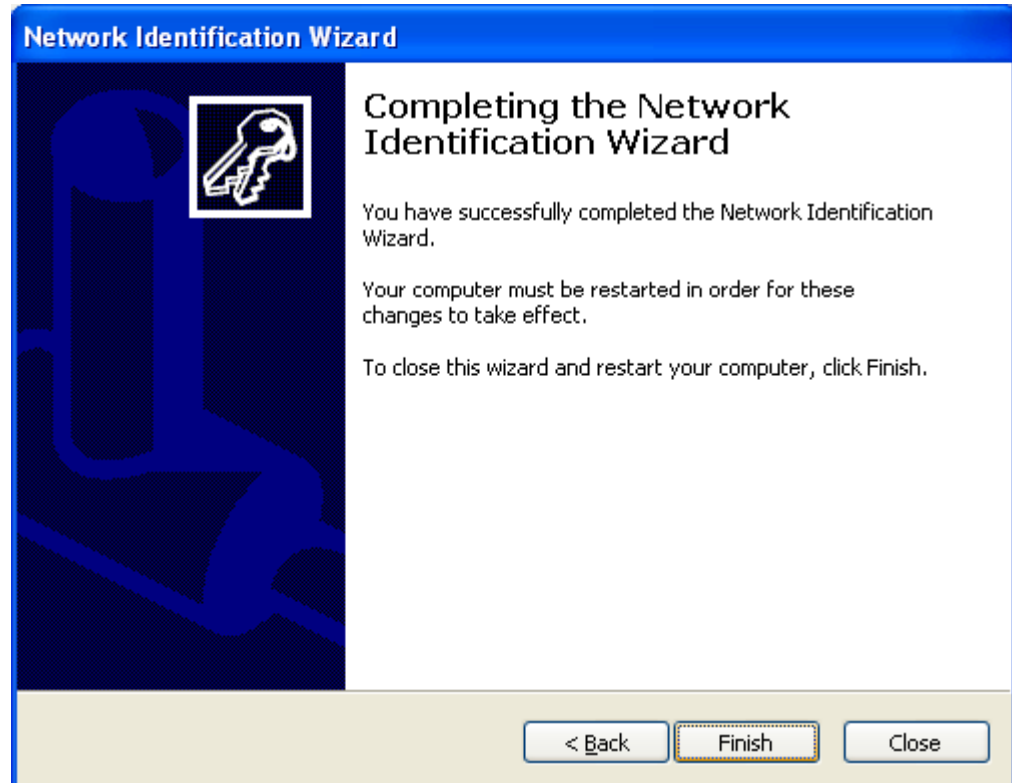
Access Level

We can give Jsmith standard user control which will allow a user to change system settings and to add new programs. Restricted user control can allow for the use of programs and saving files. One choice is to give the new user administrative rights under the Other option. We will decide on the Standard user selection and pick the Next button to proceed.



Network Identification Wizard Complete

We are now finished with the Network Identification Wizard and we can restart the computer to have our choices take effect. We press the Finish button to restart the computer.



Domain User - John Smith

When the computer restarts, we type in the username, password and domain at the first window. When the Windows XP Professional operating system loads, we can see the John Smith account is operational.

