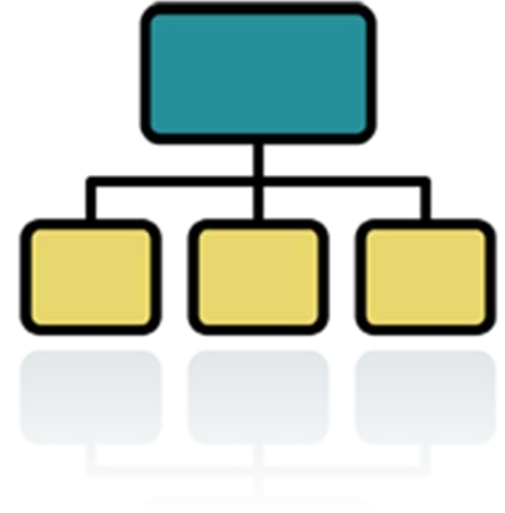


Creating a WINS Server

May 24, 2010

Why Setup a WINS Server

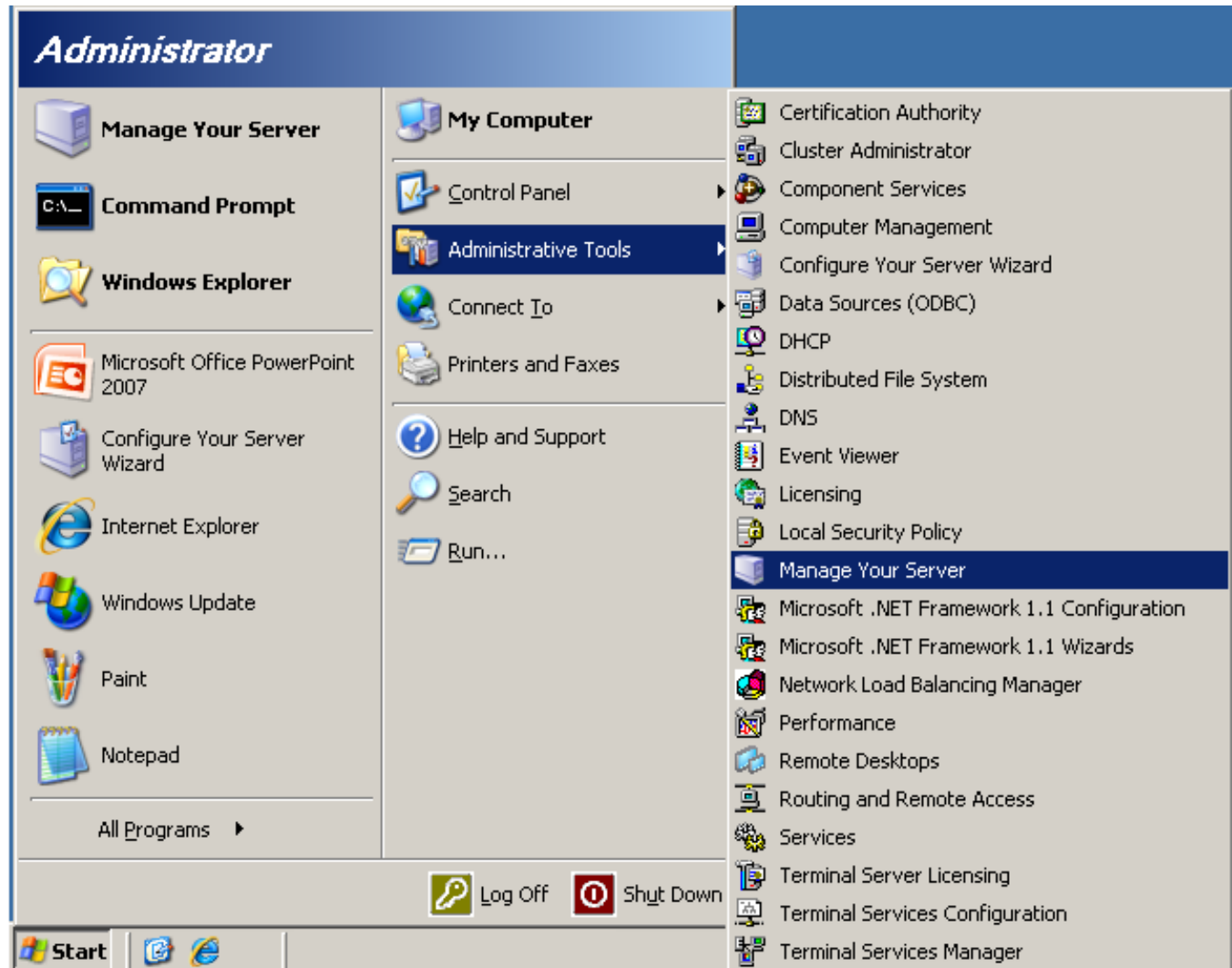
Windows Internet Name Service (WINS) resolves IP addresses for NETBIOS the maximum 15 character computer name.



Start Menu

We click the Start button and select Administrative Tools on the Start Menu.

We pick Manage your server.



Manage Your Server

In the Manage Your Server window, we choose Add or Remove a Role.

The screenshot displays the 'Manage Your Server' console window for a server named 'BITS66'. The interface includes a search bar for help and support, and a main content area divided into sections for server roles and management tools.

Manage Your Server
Server: BITS66

Managing Your Server Roles
Use the tools and information found here to add or remove roles and perform your daily administrative tasks.

Your server has been configured with the following roles:

- File Server**
File servers provide and manage access to files. Select Upgrade this role to install an updated File Server Management console, which adds new features such as Directory Quotas File Screening, Distributed File System (DFS).
 - Upgrade this role
 - Manage this file server
 - Add shared folders
 - Review the next steps for this role
- DNS Server**
DNS (Domain Name System) servers translate domain and computer DNS names to IP addresses.
 - Manage this DNS server
 - Review the next steps for this role
- DHCP Server**
DHCP (Dynamic Host Configuration Protocol) servers assign IP addresses to network clients.
 - Manage this DHCP server
 - Review the next steps for this role

Tools and Updates

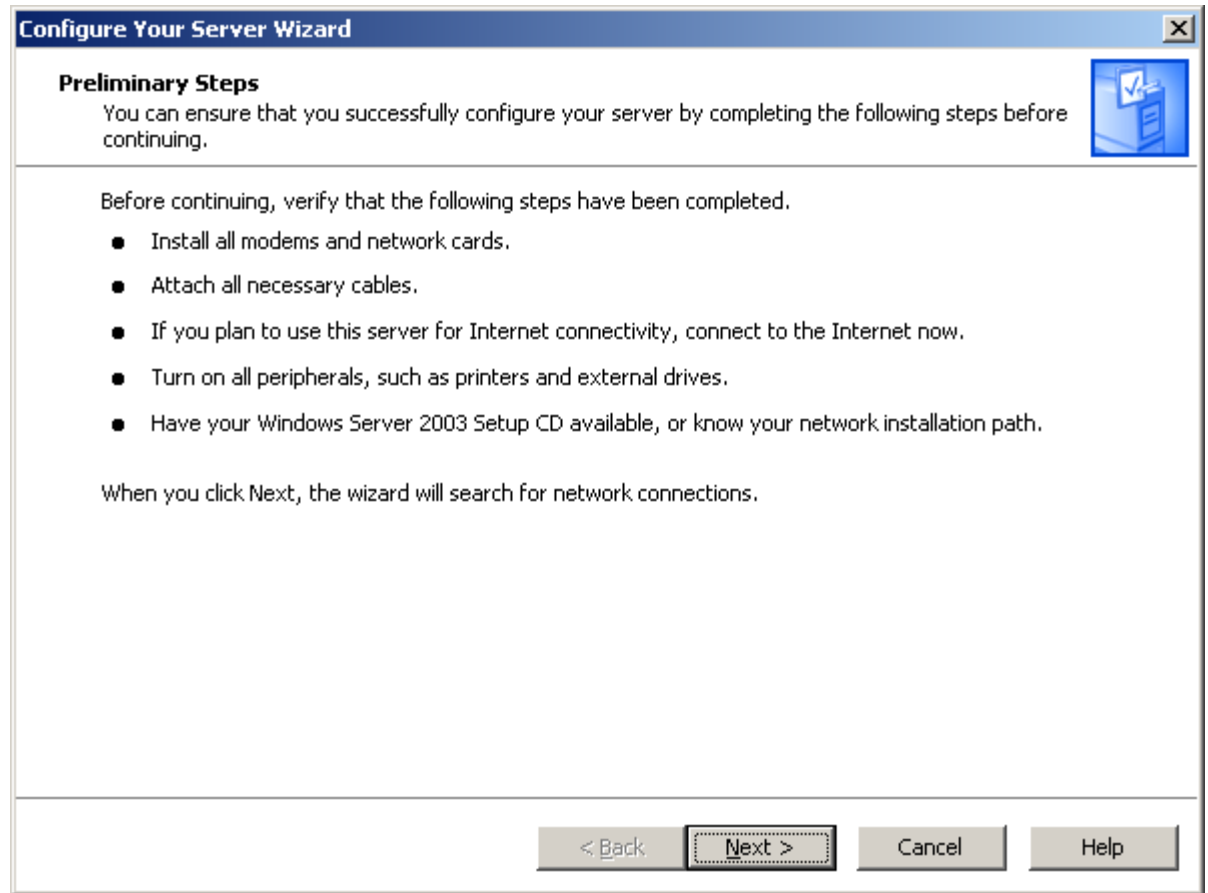
- Administrative Tools
- More Tools
- Computer and Domain Name Information
- Internet Explorer Enhanced Security Configuration

See Also

- Help and Support
- Microsoft TechNet
- Deployment and Resource Kits
- List of Common Administrative Tasks
- Windows Server Communities
- What's New
- Strategic Technology Protection Program

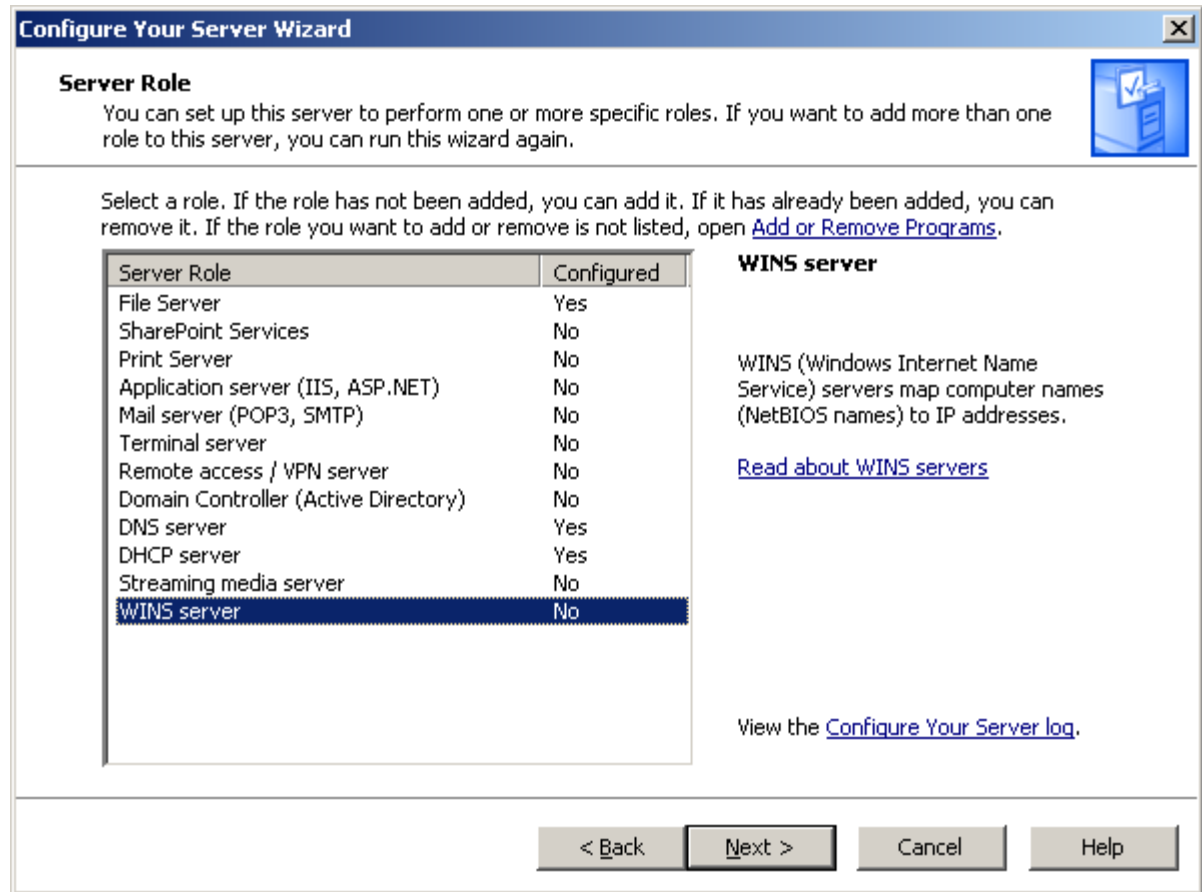
Configure Your Server Wizard

The Configure Your Server Wizard starts.



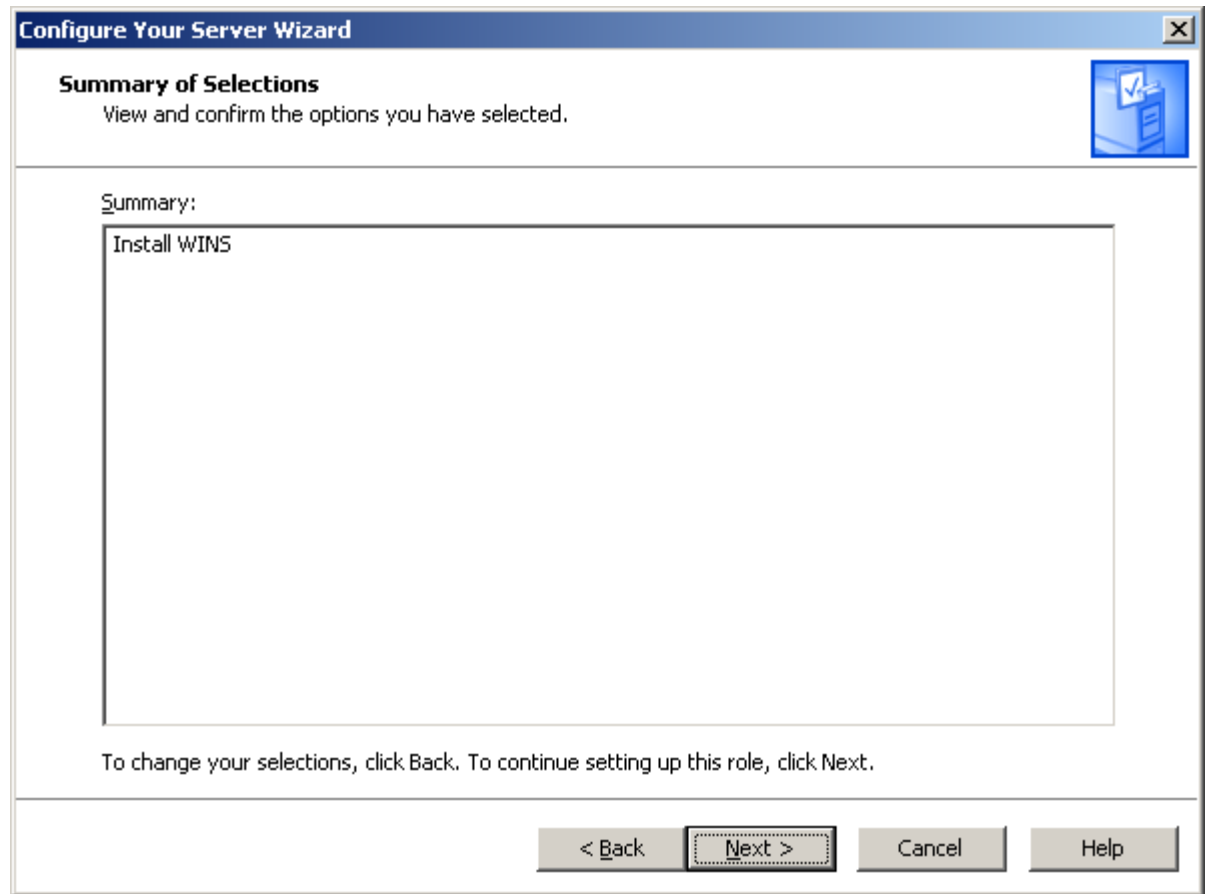
Adding WINS Server Role

We need to select WINS server as a new role on our machine.



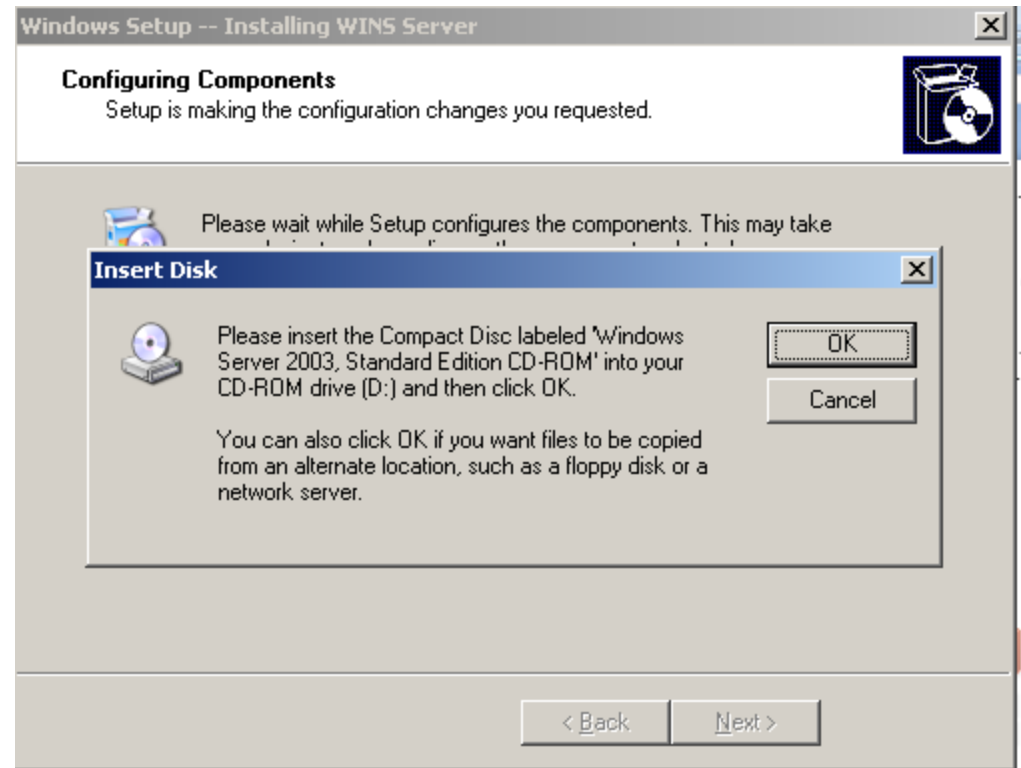
Install WINS

We press the Next button to continue the installation.



Insert Windows 2003 Server Disk

Next, we insert the Software disk when we are prompted by the server.



WINS Server is Installed

The WINS server is now loaded on the Windows 2003 server.

