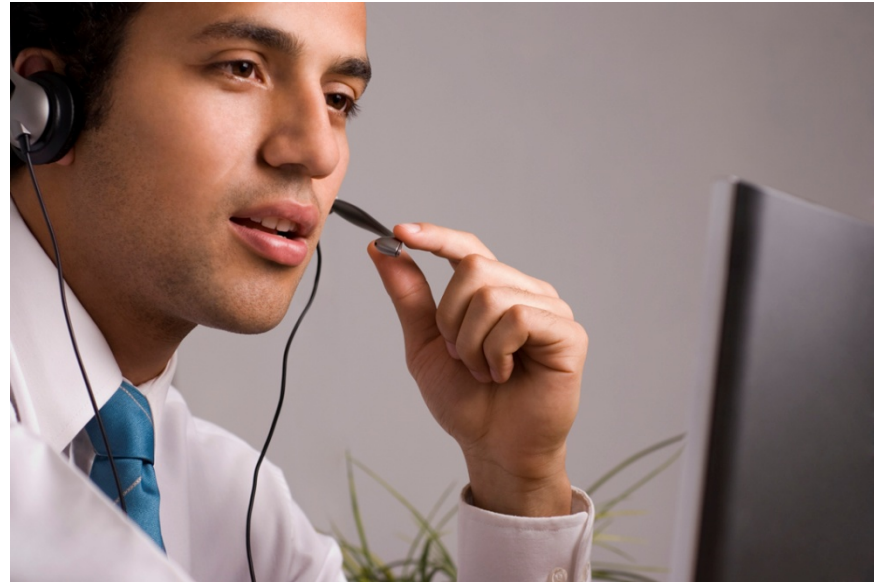


Connecting to a VPN

June 15, 2010

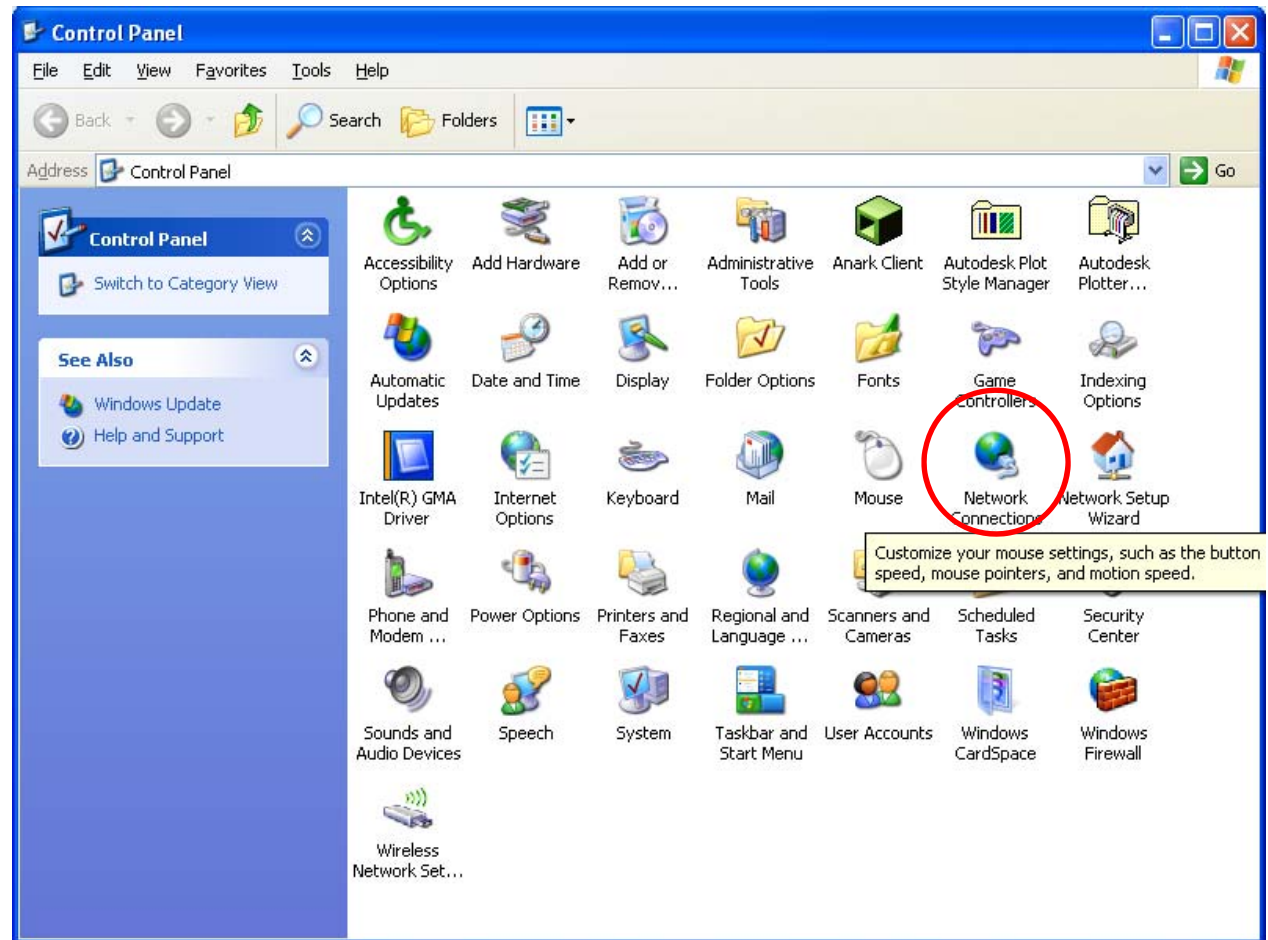
Connecting to a VPN

After we have made our organization's server a Virtual Private Network (VPN), we need to connect to the server by preparing our client computer.



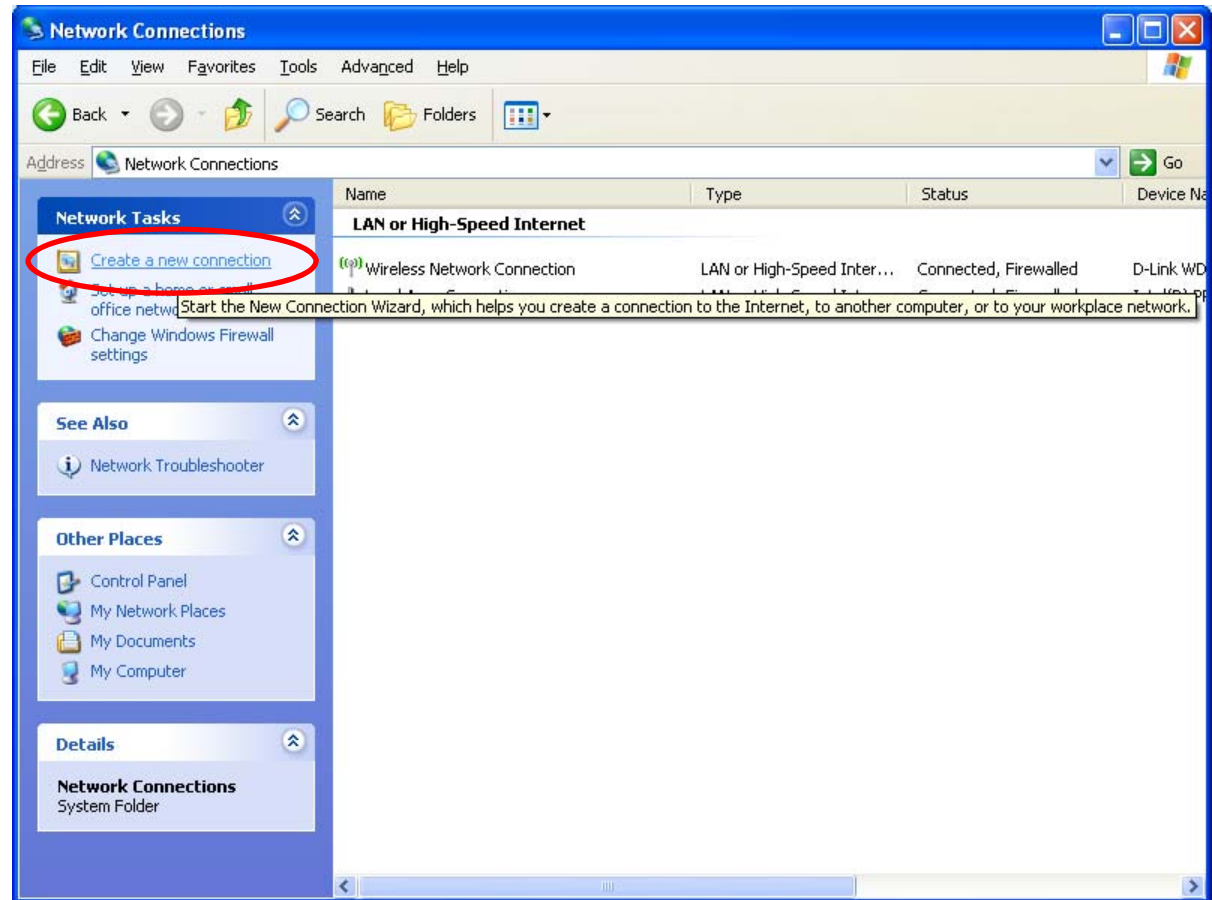
Control Panel - Network Connection

We begin by opening the control panel and selecting the Network Connection icon.



Make a New Network Connection

In the Network Connection window, we want to choose the Create a New Connection hyperlink.



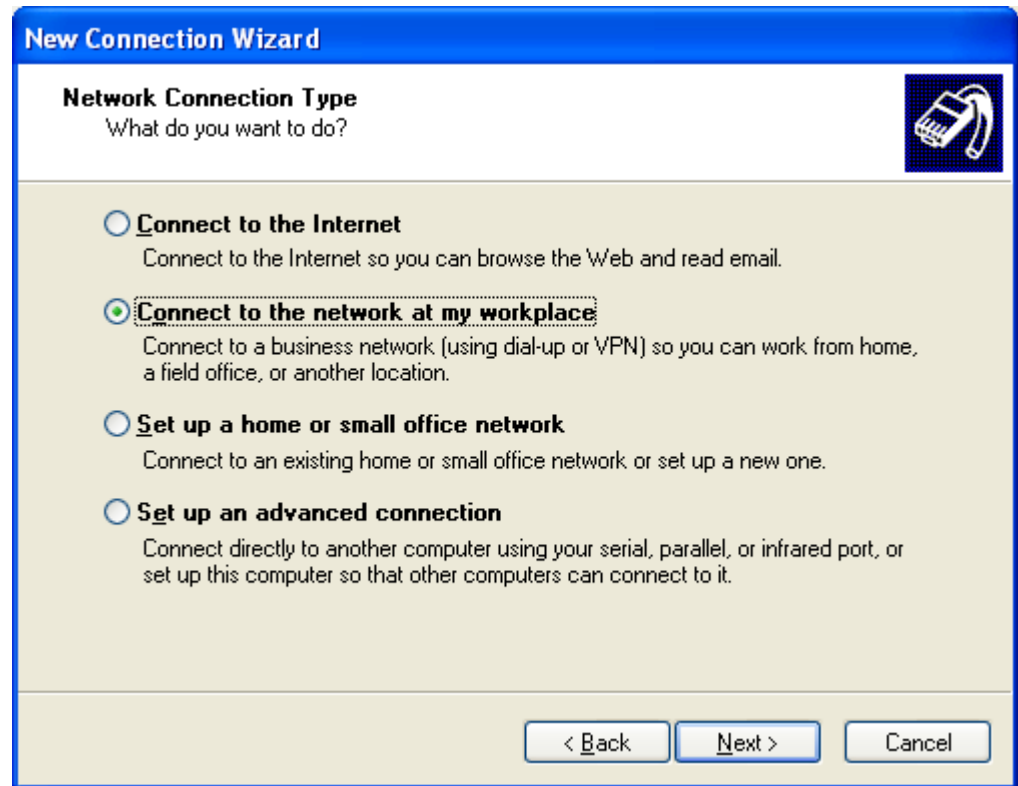
New Connection Wizard

The New Connection Wizard will start and we pick the Next button to continue.



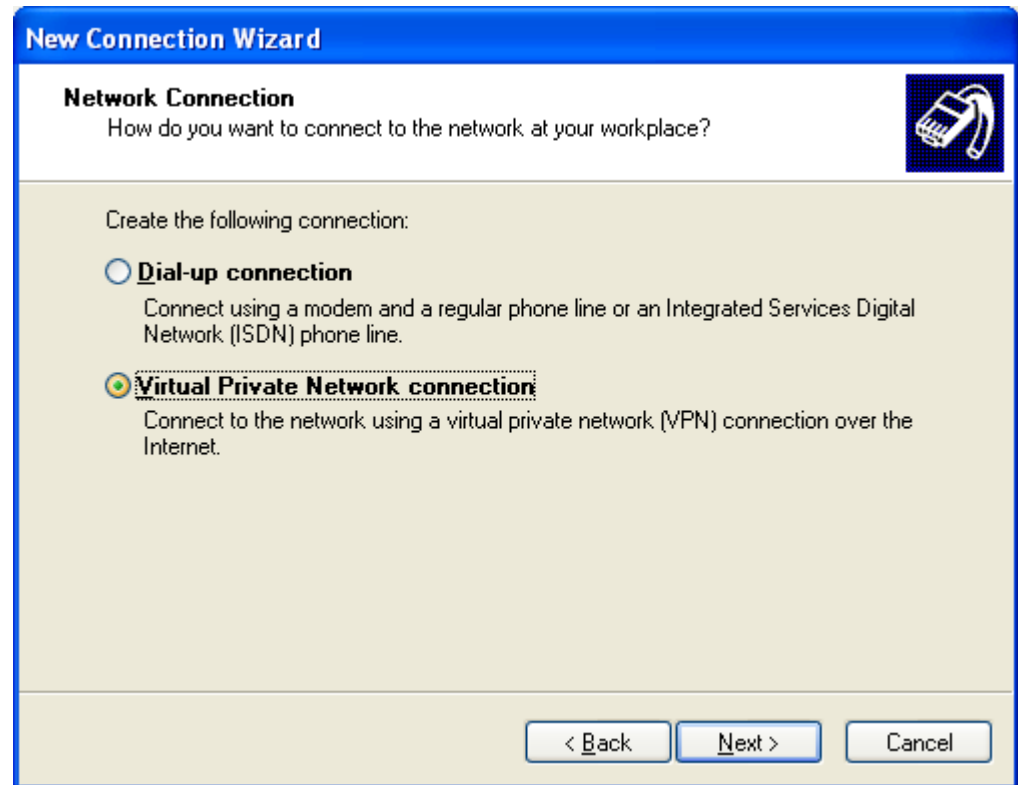
Network Connection Type

The second radial button, “Connect to the network at my workplace” is the choice we want to make to join the server VPN. Then we select the Next button to advance.



Virtual Private Network Connection

We opt for the Virtual Private Network connection and press Next.



Connection Name

We type the company name in the textbox and select Next.



New Connection Wizard

Connection Name
Specify a name for this connection to your workplace.

Type a name for this connection in the following box.

Company Name

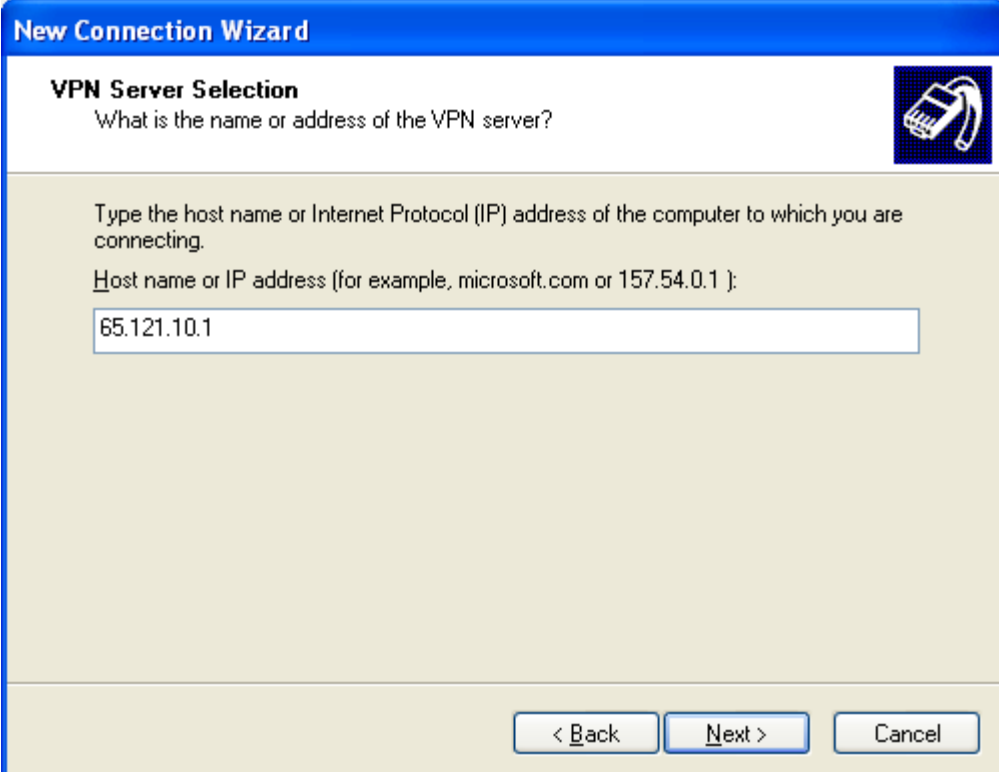
BitsLab

For example, you could type the name of your workplace or the name of a server you will connect to.

< Back Next > Cancel

VPN Server Selection

At this window, we input the IP address of the VPN server. We can input the IP address of a router in front of the server and use port forwarding to relay the request to the VPN server.



The image shows a screenshot of a Windows 'New Connection Wizard' dialog box. The title bar is blue and contains the text 'New Connection Wizard'. The main area has a white background and is titled 'VPN Server Selection'. Below the title, it asks 'What is the name or address of the VPN server?'. There is a small icon of a computer with a network cable in the top right corner. The main text says 'Type the host name or Internet Protocol (IP) address of the computer to which you are connecting.' followed by 'Host name or IP address (for example, microsoft.com or 157.54.0.1):'. A text input field contains the IP address '65.121.10.1'. At the bottom, there are three buttons: '< Back', 'Next >', and 'Cancel'.

New Connection Wizard

VPN Server Selection
What is the name or address of the VPN server?

Type the host name or Internet Protocol (IP) address of the computer to which you are connecting.

Host name or IP address (for example, microsoft.com or 157.54.0.1):

65.121.10.1

< Back Next > Cancel

Complete New Connection Wizard

At last, we complete the new connection wizard. We choose the Finish button.



Connect to VPN Server

The Connect to the VPN sever window appears and we enter our username and password. We can opt for this connection for our account only or for anyone who uses the computer.

Once we connect to the VPN server, we can access our files and folders the same way we do when we are in the office.

