

Basic Geometry Practice Final

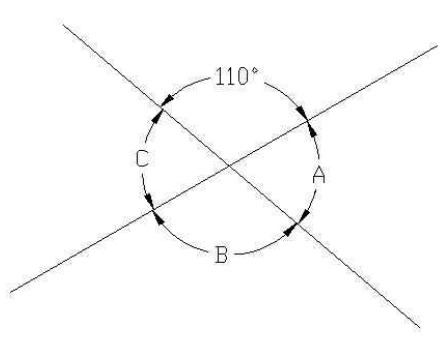
1. Convert  $80.5^\circ$  to degrees – minutes – seconds

2. Convert  $105.35^\circ$  to degrees – minutes – seconds

3. Convert  $30^\circ 45'$  to decimal – degrees

4. Convert  $315^\circ 5' 15''$  to decimal – degrees

5. Find angles B, C and D

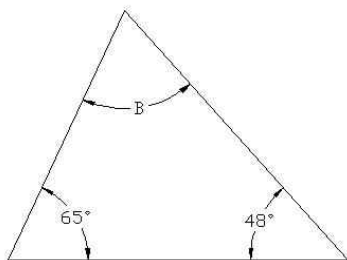
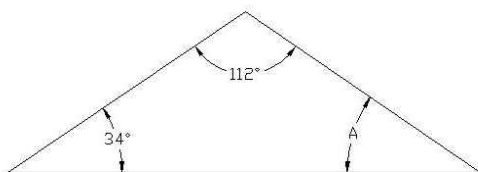
 <p>The diagram shows a circle with two intersecting lines. The top angle is labeled <math>110^\circ</math>. The other three angles are labeled A, B, and C. Angle A is the top-right angle, angle B is the bottom angle, and angle C is the top-left angle.</p>	<p>Angle A = Angle B = Angle C =</p>
---	--

## Basic Geometry Practice Final

6. Solve for the following angles

Angle A =  
 Angle B =  
 Angle C =  
 Angle D =  
 Angle E =  
 Angle F =

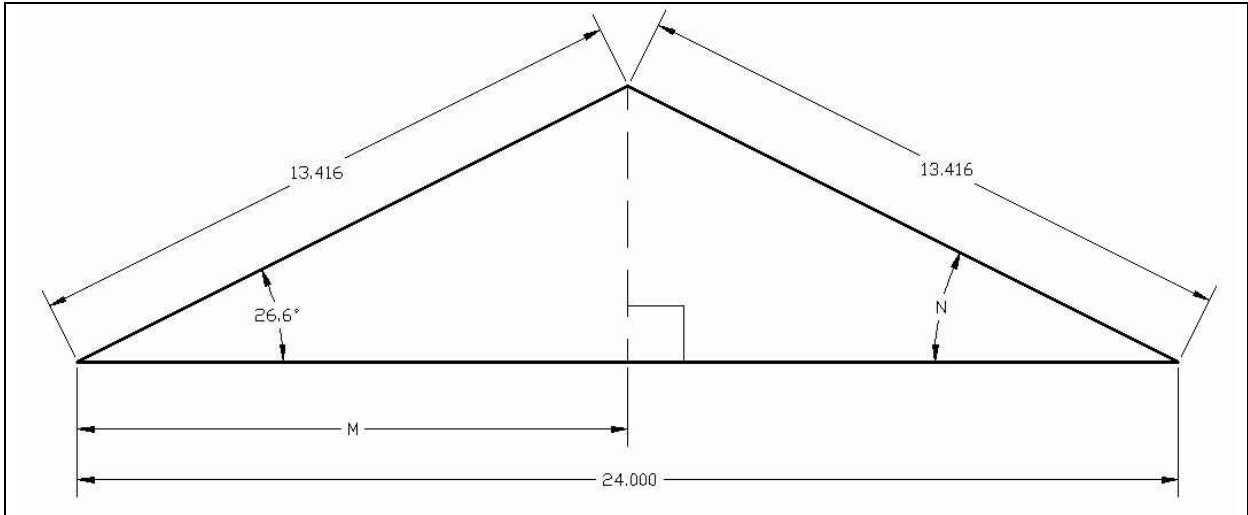
7. Find angles **a** and **b**



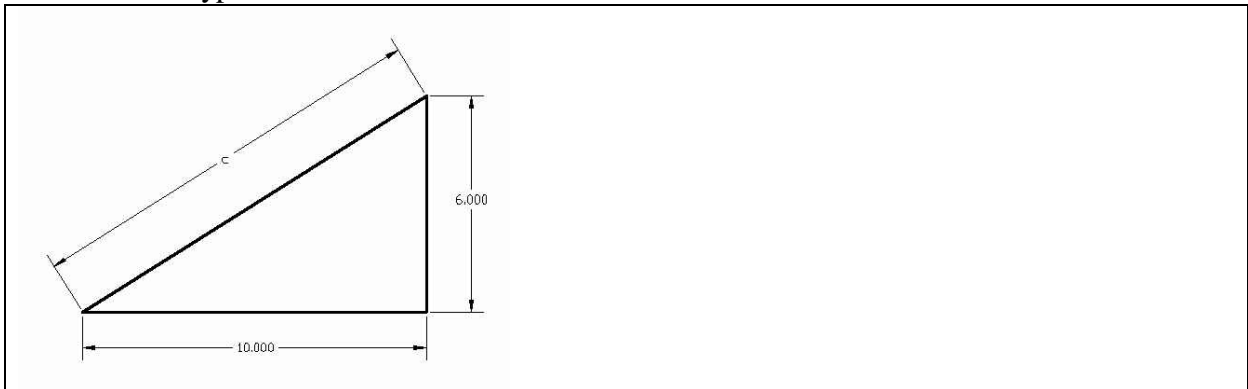

## Basic Geometry Practice Final

8. The length of side M is \_\_\_\_\_

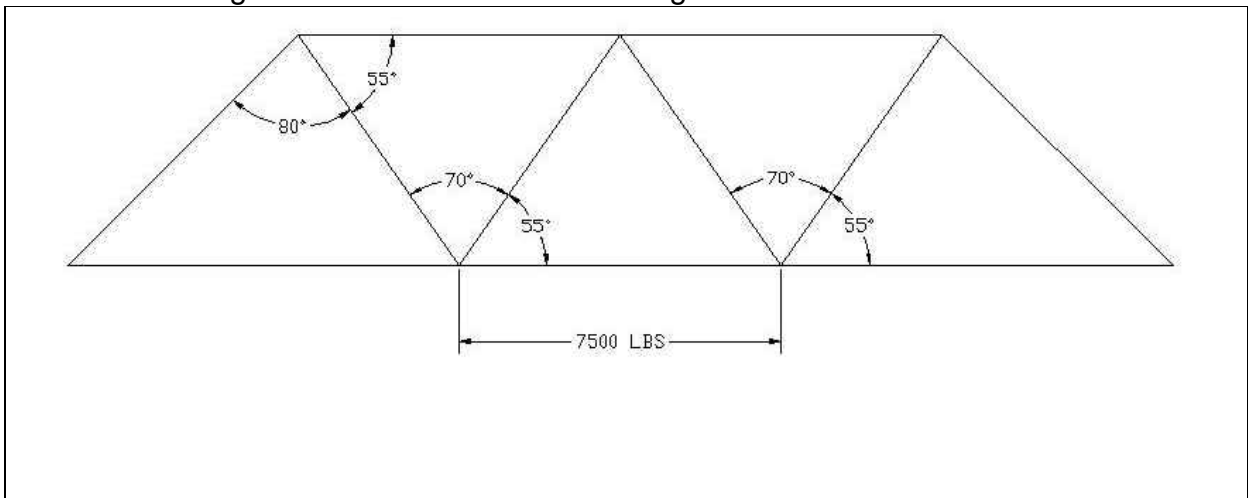
Angle N is \_\_\_\_\_



9. Find the hypotenuse c

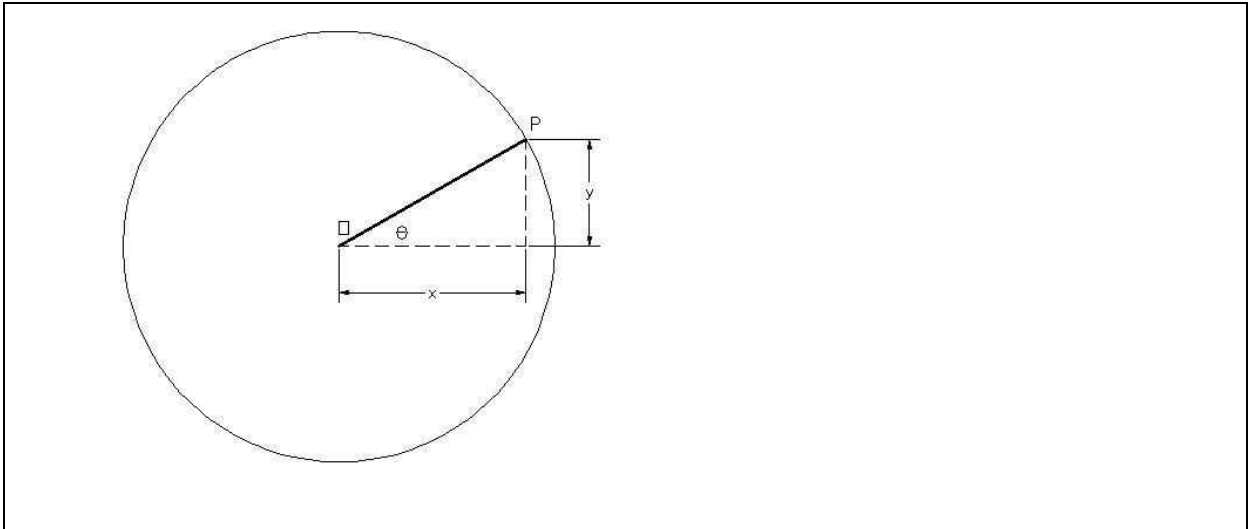


10. Find the length of all sides of the three triangles.

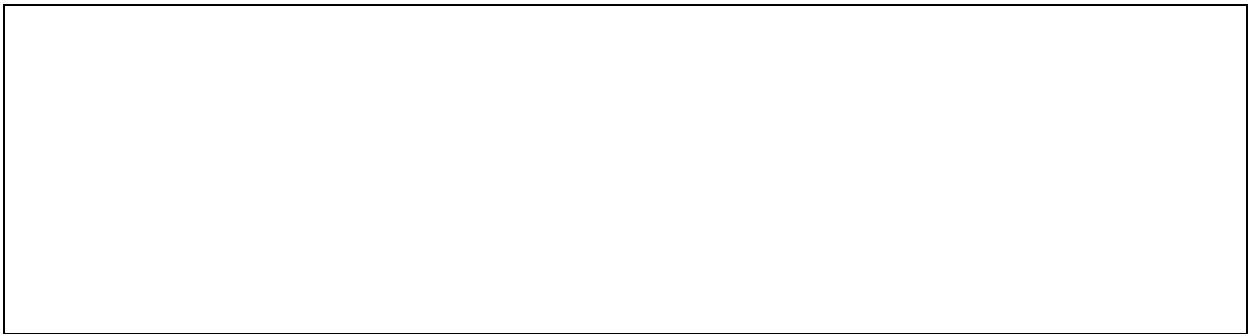


Basic Geometry Practice Final

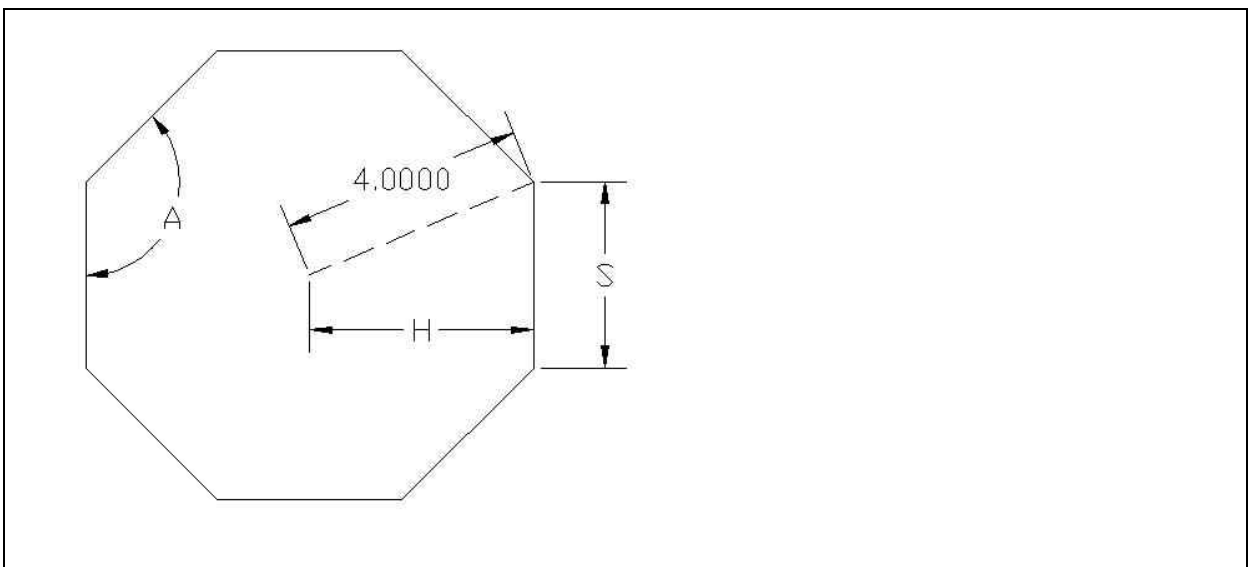
11. What is the formula for  $x$  and  $y$  if the angle of the line segment  $OP$  is  $\theta$



12. Find  $x$  and  $y$  if  $R = 3$  and  $\theta = 40^\circ$

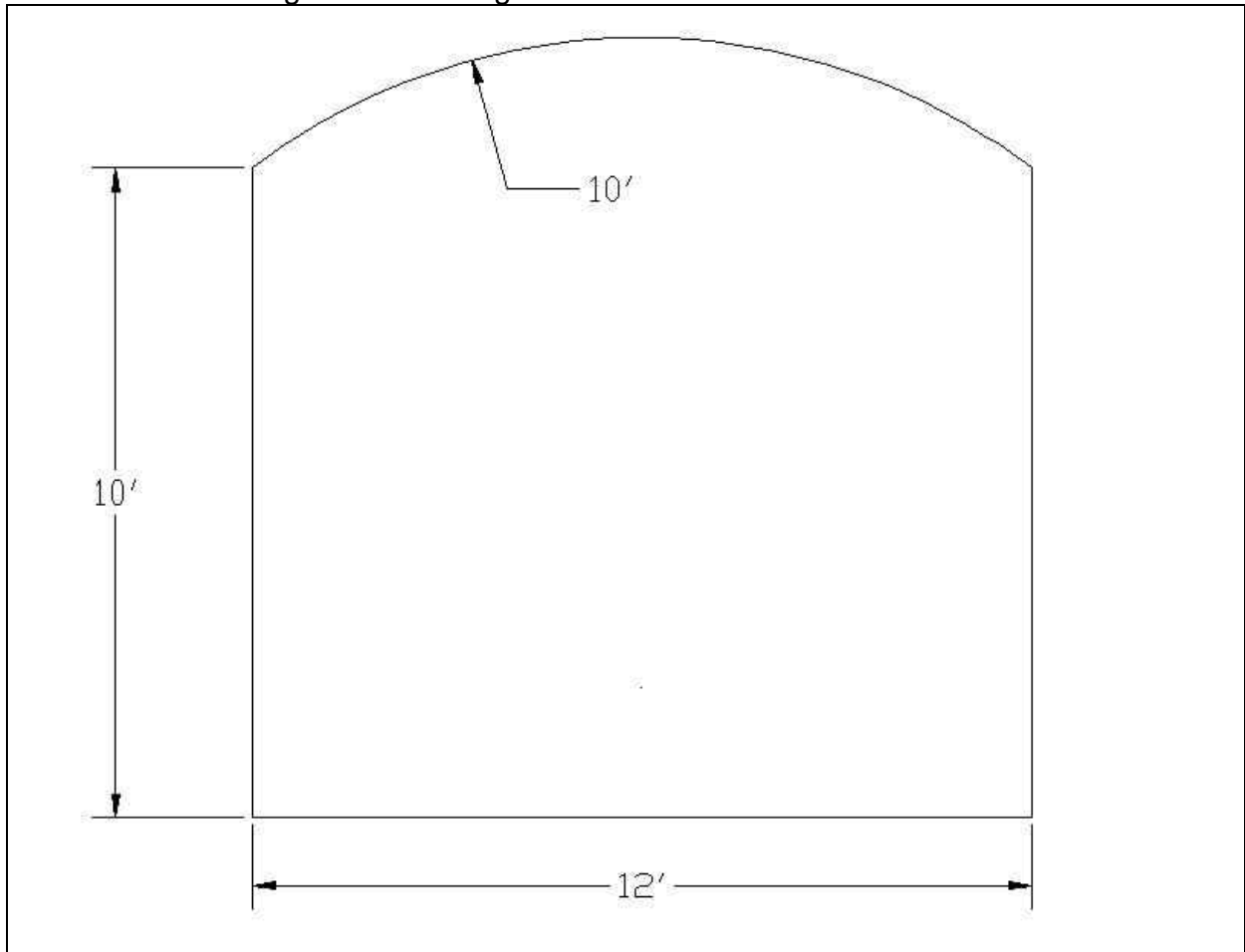


13. Find  $A$ ,  $H$  and  $S$



Basic Geometry Practice Final

14. Find the arc length of the ceiling.



15. Find the area of the composite.

