

Install Linux Wine and Microsoft Office 2007

July 3, 2010

Why Use Wine?

Most professionals want to use applications like Microsoft Word, Excel and Power Point. To load this software to the Linux operating system. We will install a program called Wine.

First, we will copy the Office 2007 folder onto the desktop.



Visit Winehq.org

WineHQ

Wiki AppDB Bugzilla Forums

Search:

WINE^{HQ}
Run Windows applications on Linux, BSD, Solaris and Mac OS X.

i **About**
Learn about the Wine project.

s **Download**
Install the latest Wine.

? **Support**
Get help using Wine.

👥 **Development**
Become a Wine developer.

\$ **Donate**
Donate to the Wine project.

English (Change Language)

Latest Releases

Stable: [Wine 1.0.1 \(stable\)](#)
Development: [Wine 1.2-rc6 \(testing\)](#)

News


Wine 1.2-rc6 Released
July 2, 2010
The Wine development release 1.2-rc6 is now available.
What's new in this release:
• Many translation updates.
• A lot of bug fixes.
The source is [available now](#). Binary packages are in the process of being built, and will appear soon at their respective [download locations](#).

Wine 1.2-rc5 Released
June 25, 2010
The Wine development release 1.2-rc5 is now available.

Hosted By [codeweavers](#)

We then need to visit the winehq.org homepage and double click on Wine 1.0.1 stable version.

Wine 1.0.1



WineHQ

Alexandre Julliard says...

WineHQ Wiki AppDB Bugzilla Forums

Search:

Wine Announcement

The Wine maintenance release 1.0.1 is now available.

This is a maintenance release from the 1.0 stable branch. It contains only translation updates and small bug fixes.

The source is available from the following locations:

<http://ibiblio.org/pub/linux/system/emulators/wine/wine-1.0.1.tar.bz2>
<http://prdownloads.sourceforge.net/wine/wine-1.0.1.tar.bz2>

Binary packages for various distributions will be available from:

<http://www.winehq.org/site/download>

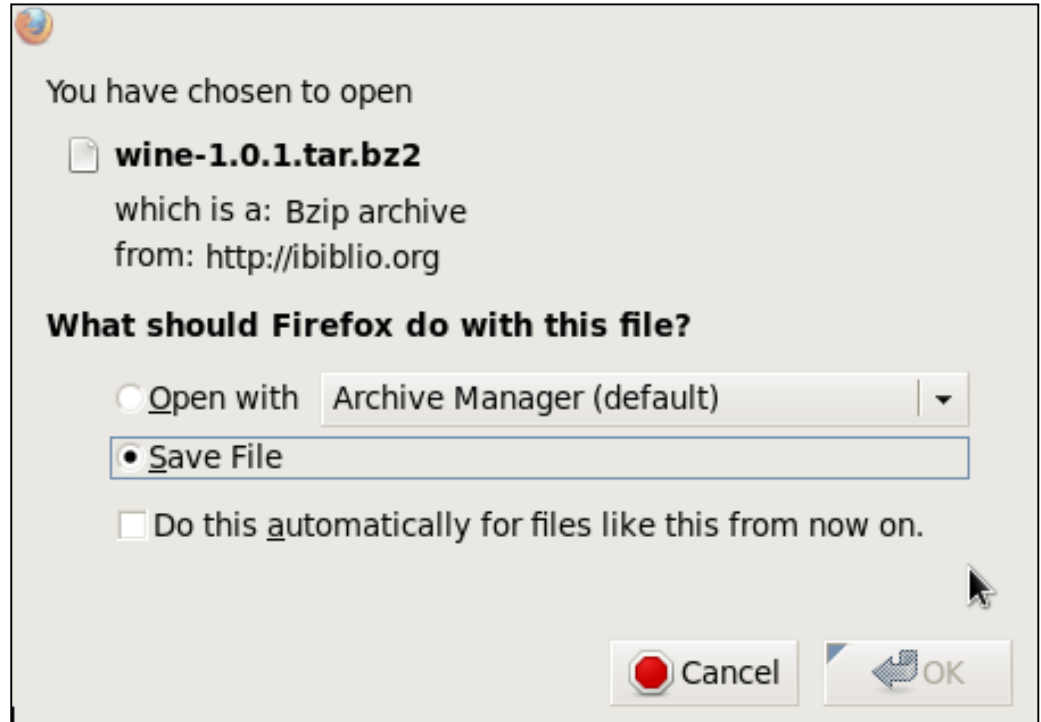
You will find documentation on <http://www.winehq.org/site/documentation>

You can also get the current source directly from the git repository. Check <http://www.winehq.org/site/git> for details.

Double click on the wine -1.0.1.tar.bz2 hyperlink.

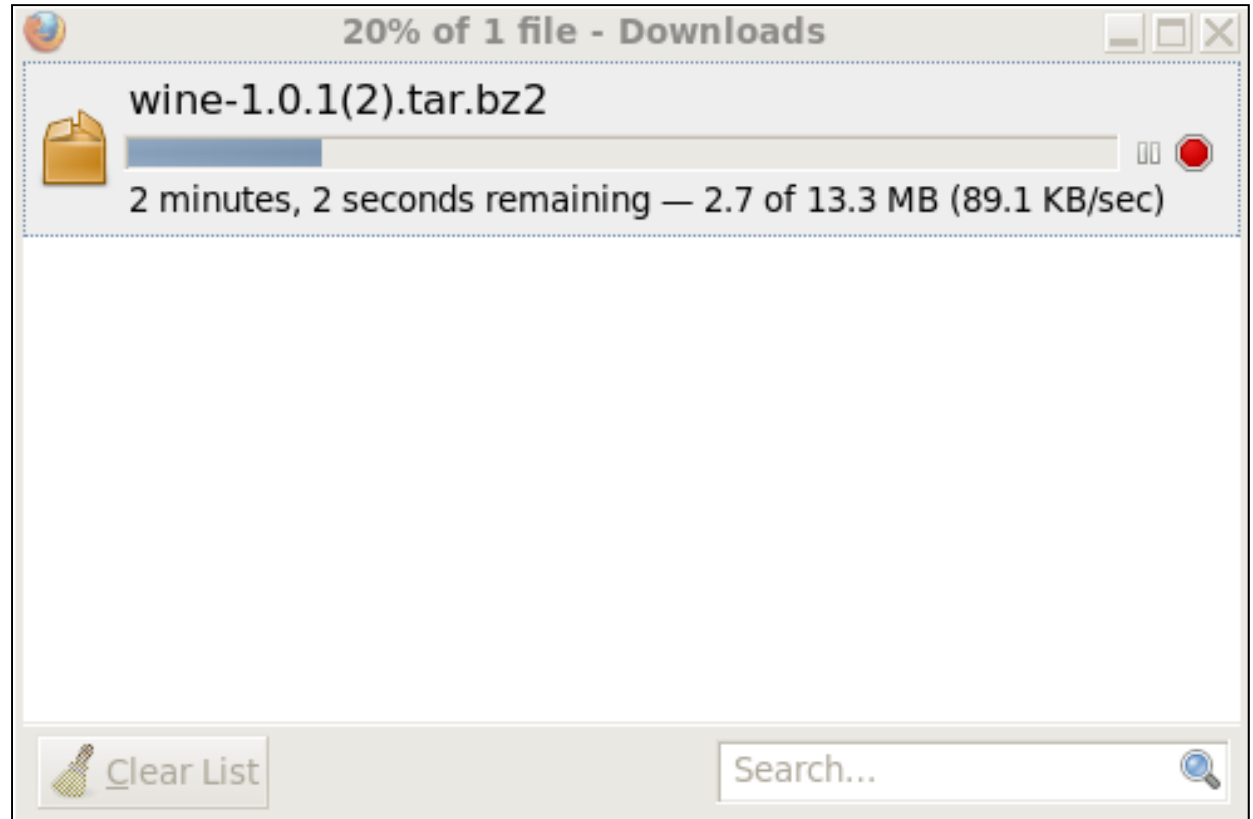
Save the File

Now that we have chosen the Wine software, we will download the file to our computer.



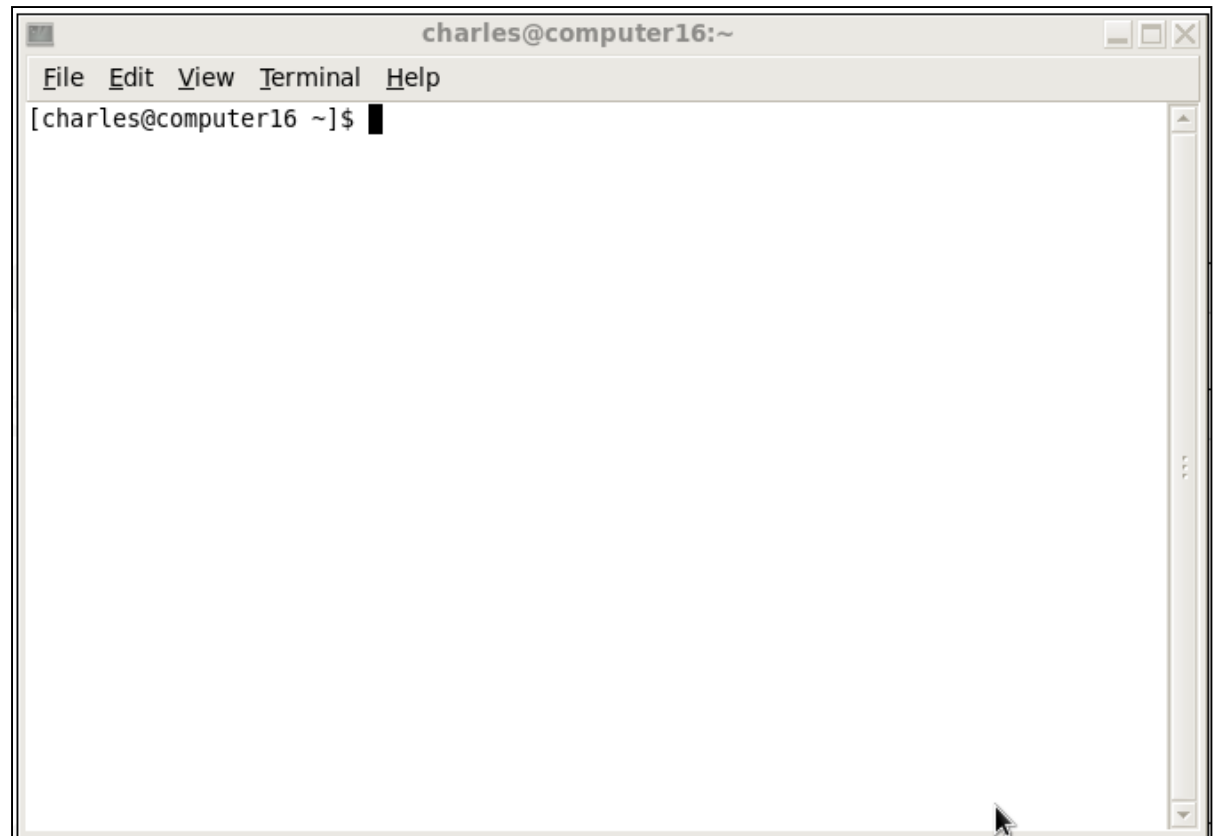
File Downloading

The file will take 2 to 3 minutes to download depending on the speed of the Internet connection.



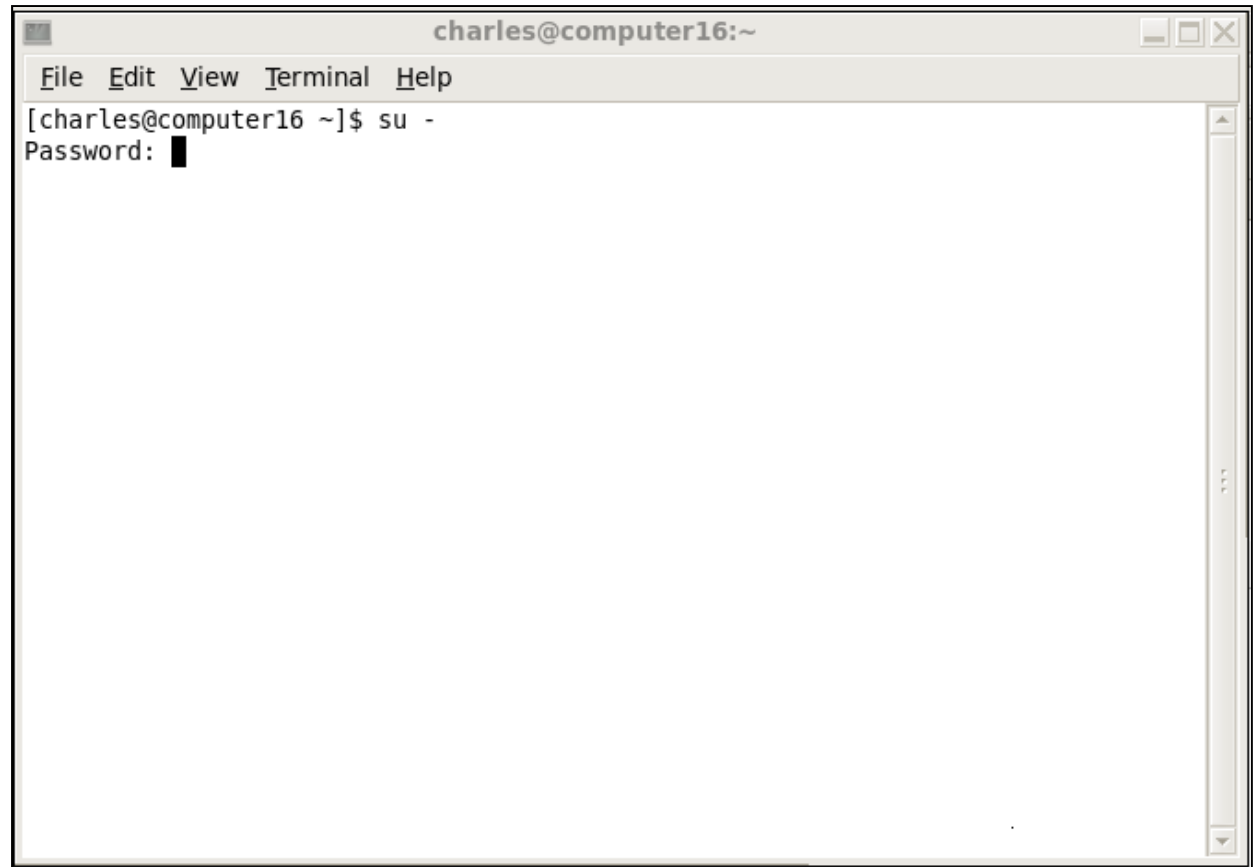
Install Wine

To install Wine, we open a terminal window in your Linux operating system.



Going to the Root Directory

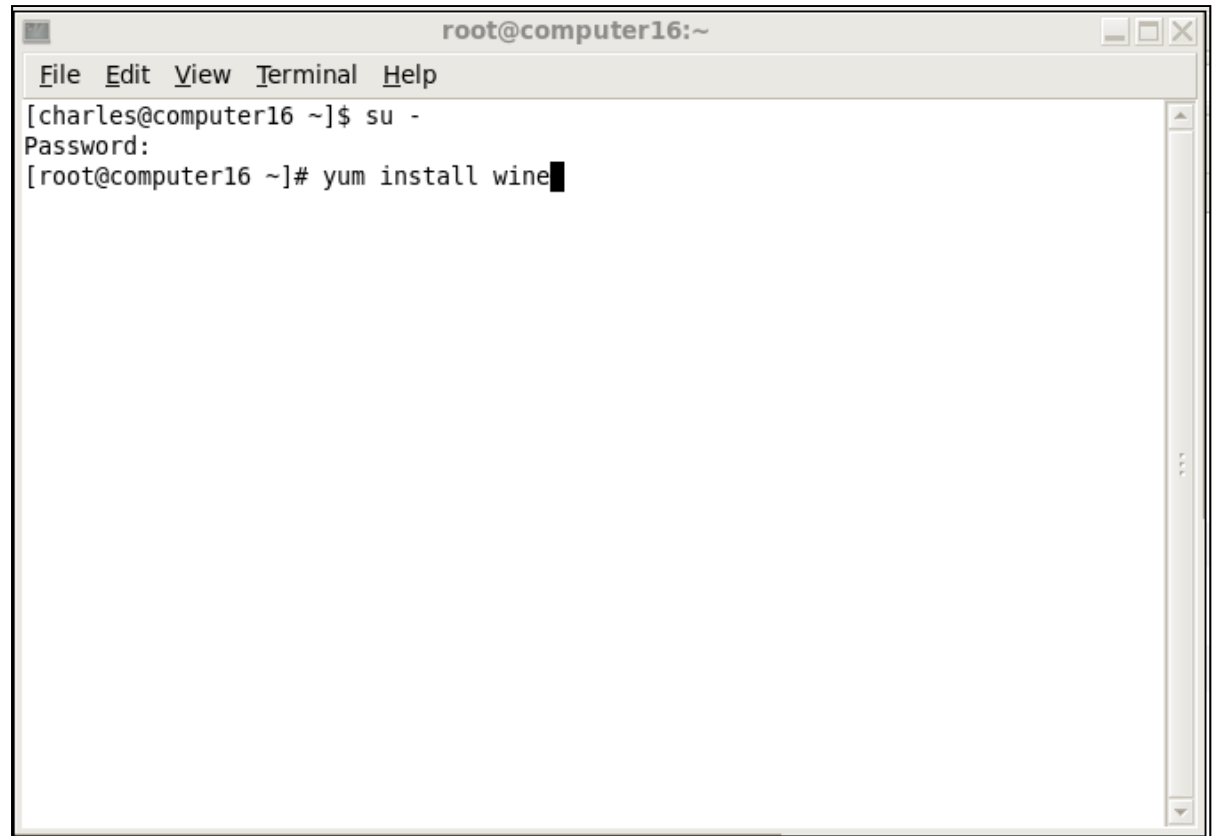
Type `su -` at the prompt and we will need to enter the administrative password to take us to the Root directory.



```
charles@computer16:~  
File Edit View Terminal Help  
[charles@computer16 ~]$ su -  
Password: █
```


Install Wine

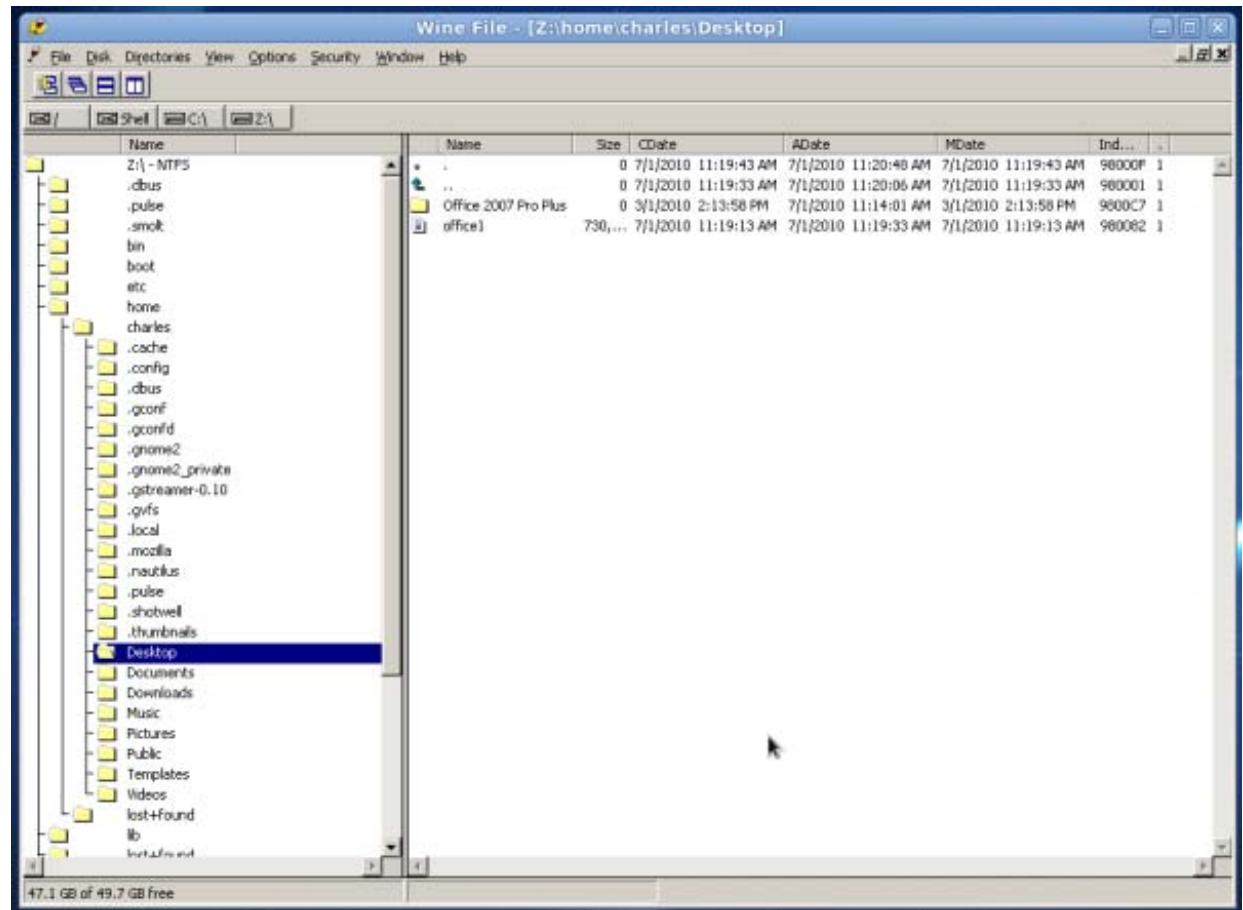
Now, we type yum install wine. When the installation is complete, we can load our Microsoft Office software package.

A terminal window titled 'root@computer16:~' with a menu bar containing 'File', 'Edit', 'View', 'Terminal', and 'Help'. The terminal shows a user named 'charles' at 'computer16' in the home directory (~) using 'su -' to become root. The root prompt is '#'. The command 'yum install wine' is entered and the cursor is at the end of the line.

```
root@computer16:~  
File Edit View Terminal Help  
[charles@computer16 ~]$ su -  
Password:  
[root@computer16 ~]# yum install wine
```

Load Office 2007 with Wine

We go to Applications on the Linux Menu bar and then select Wine. We then double click on Wine File. We go to the user's folder and then the desktop folder. We pick the Office 2007 Plus folder and when we open it, we double click on Setup. After we put in the serial key, we can install the typical programs.



Opening Microsoft Word

To run Microsoft Word, we go to Applications on the Menu bar, then we select Wine, Wine Programs and finally Microsoft Word.

