

Uploading to a Web Server

16

In this chapter, we will learn the following to World Class CAD standards:

- **Setting Up a New Site**
- **Using the Site Definition Window**
- **Retrieving FTP Information**
- **Launching the Server Interface**
- **Uploading Files**
- **Checking the Upload**

Setting up a New Site

When we begin a project using Dreamweaver, we want to create a new site definition, so we easily manage our files. However, one large benefit is to use the file transfer capability with the Dreamweaver application. In this exercise, we will use a free web account from www.bravehost.com and upload a webpage and supporting documents.

In Dreamweaver, we select Site on the Dreamweaver menu bar and choose New Site on the popup menu. We will see the Site Definition window appear.

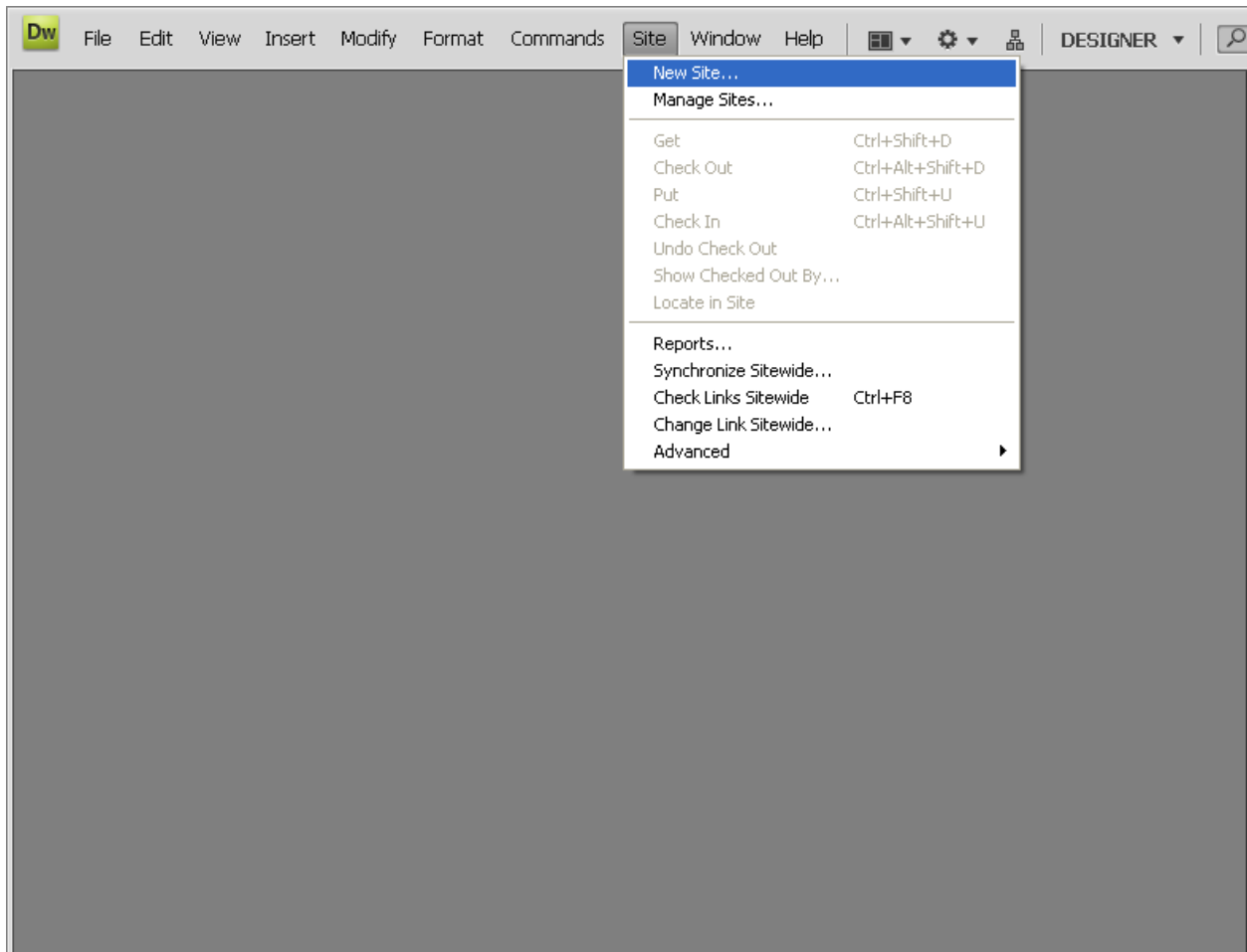


Figure 16.1 – Selecting the New Site

The Site Definition Window

First, we insert the site name that will be listed in the Dreamweaver site index. Next, use the folder icon to the right of the location entry field to find the location of the HTML folder on the local computer. Now, we find the images folder inside the HTML folder using its respective folder icon. In the HTTP Address field, we type the full URL.

Uploading to a Web Server

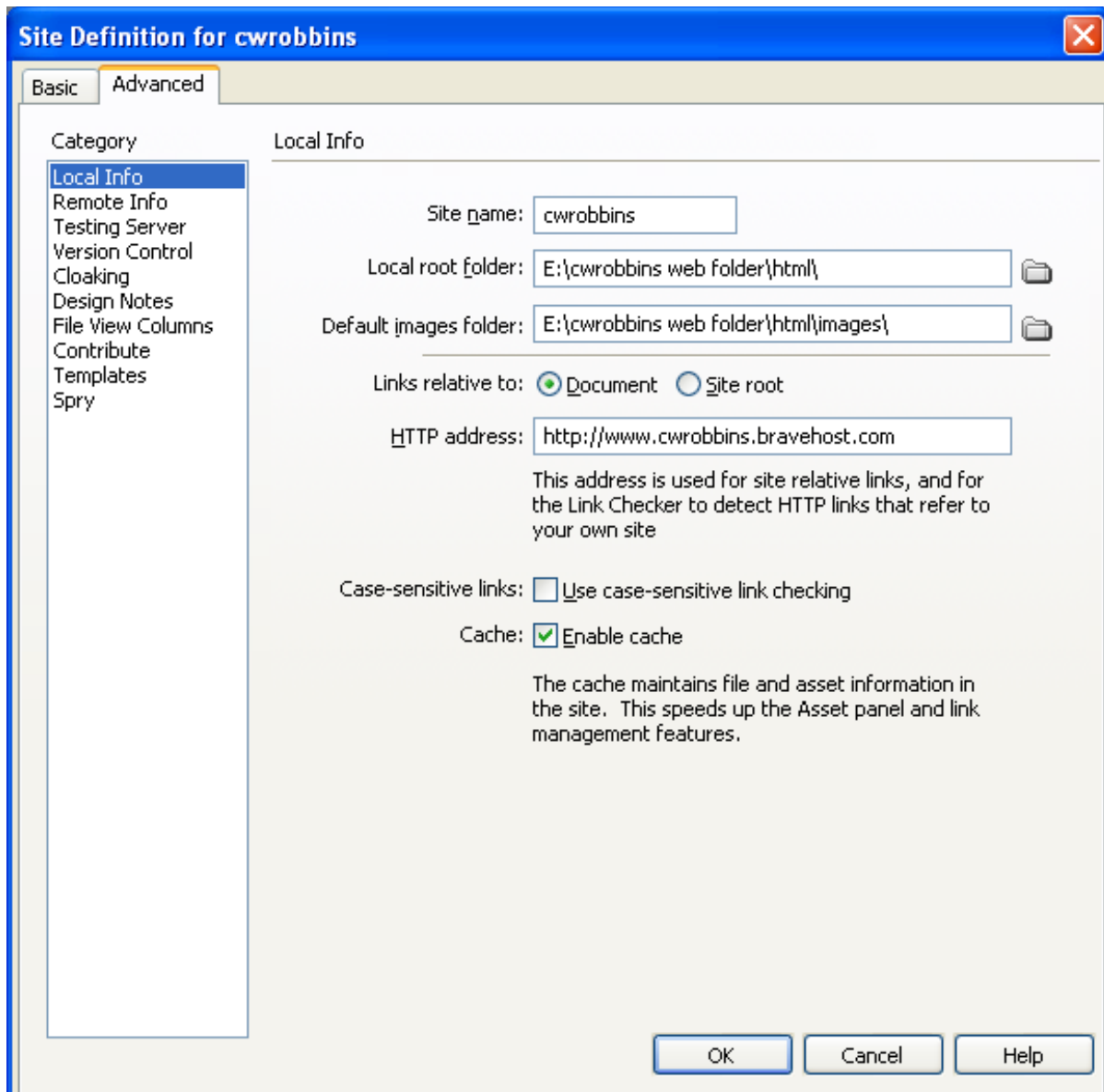


Figure 16.2 – The Site Definition Window

To get FTP login information, we have to visit our hosting site. Make sure to record the server hostname and FTP username. We will also need to remember our FTP password.

Uploading to a Web Server

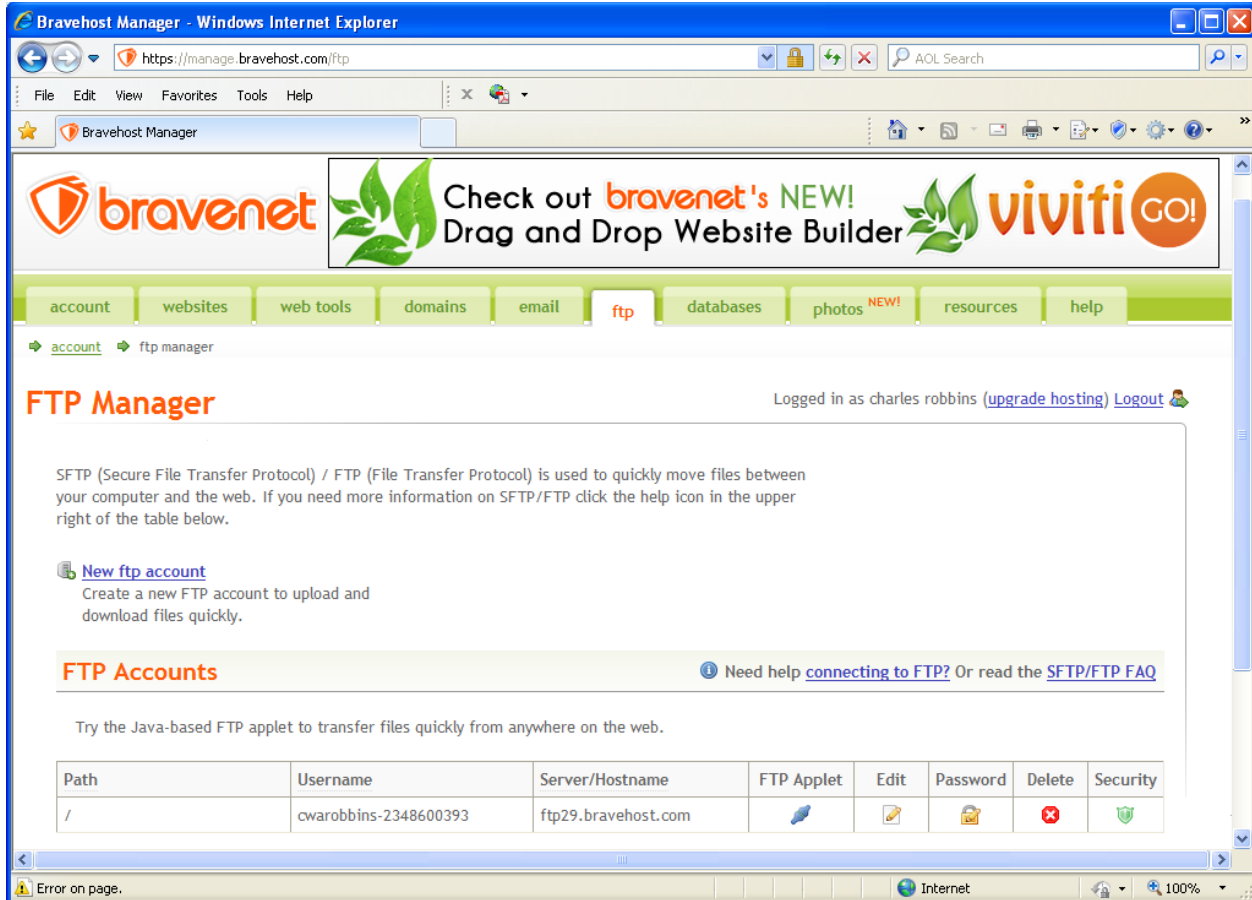


Figure 16.3 – Retrieving FTP Information

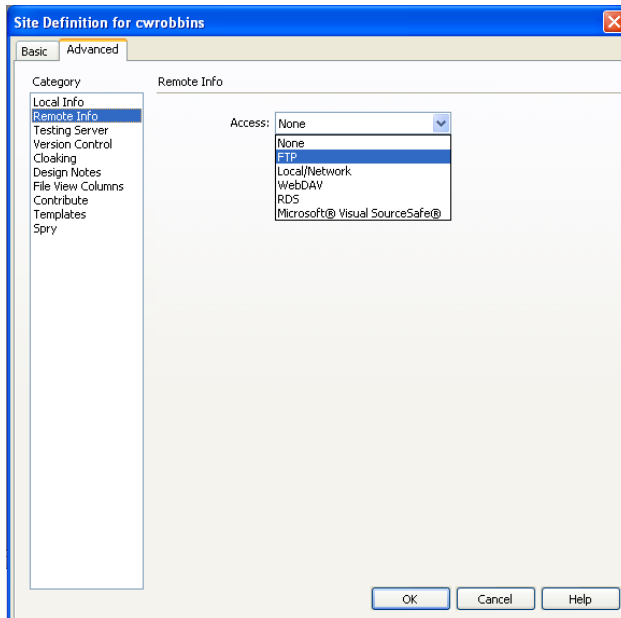


Figure 16.4 – Remote Info Account

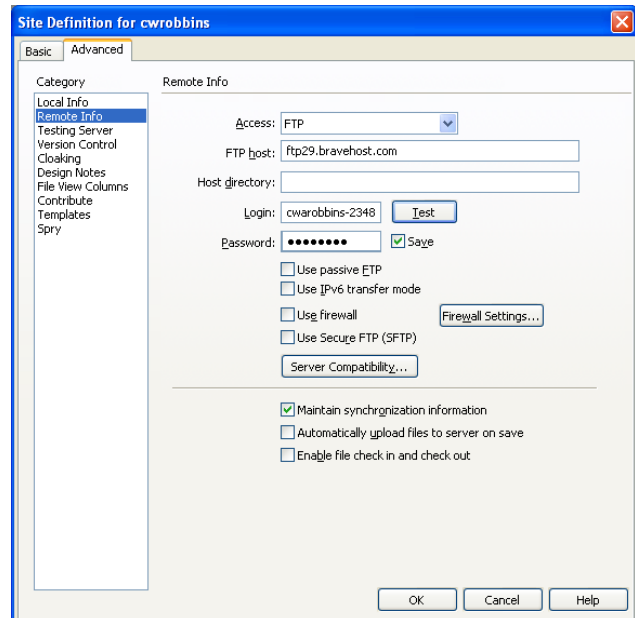


Figure 16.5 – Entering FTP Information

Uploading to a Web Server

To set up a Remote Info account, we select the Remote Info Category and then we pick FTP from the access drop menu. A number of new fields will appear. We type the FTP hostname into the FTP Host field. Then, we key in the FTP username into the Login field, and then type our FTP password into the password field. We hit the OK button to save these settings and exit the Site Definition window.

Launching the Server Interface

Now all of the local files will be visible in the Files window. To check the index page, we click the Expand icon on the Files window to show local and remote sites. To connect to the remote site, we select the Connect to Remote button

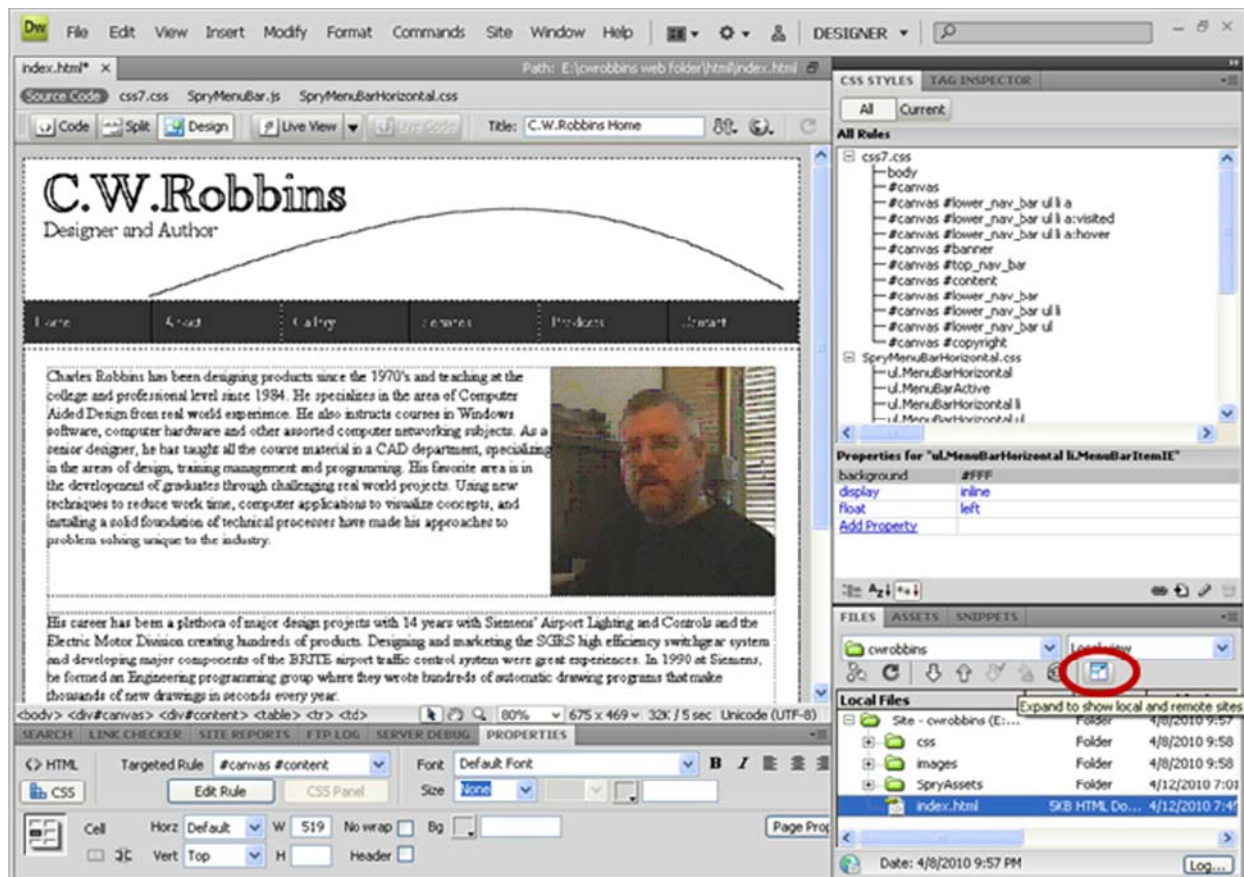


Figure 16.6 – Expanding the Files Window

Uploading to a Web Server

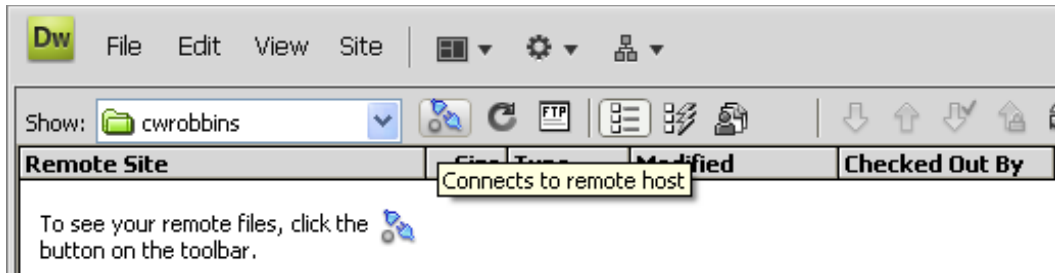


Figure 16.7 – Connecting to the Remote Site

We can upload our index file by simply dragging it from the local files directory to the Remote site directory. When you drag over the index file, the support folder will also be uploaded. You can upload individual files by dragging them over in the same manner. Check your upload by visiting the site through a web browser.

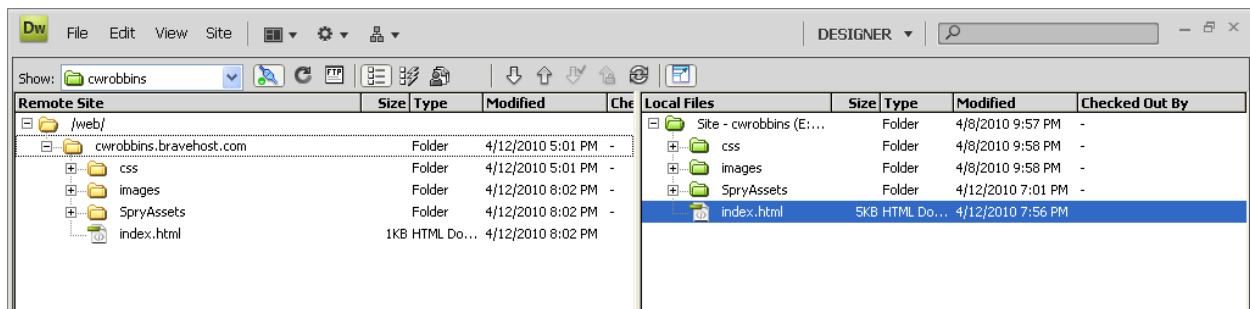


Figure 16.8 – Connecting to the Remote Site

Uploading to a Web Server

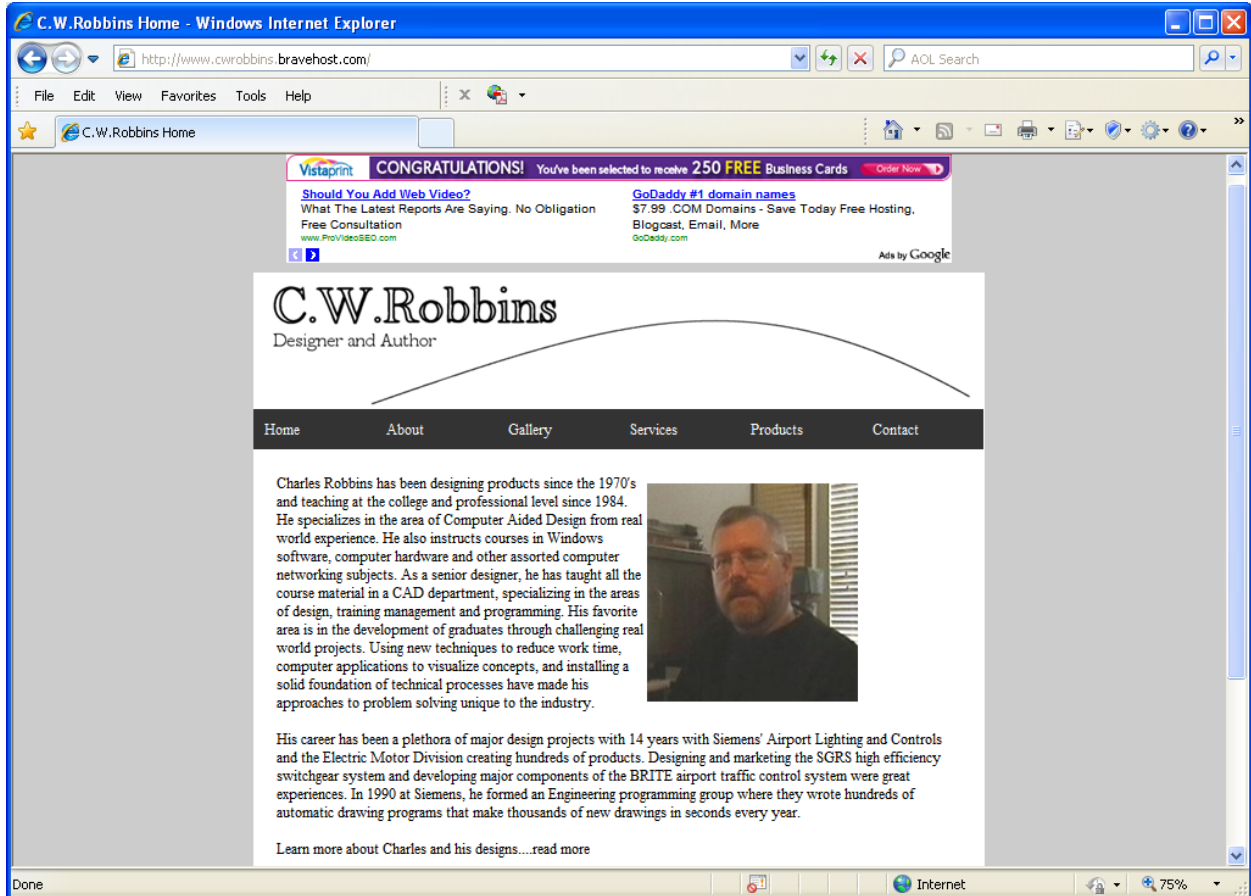


Figure 16.9 – Checking the Upload by Visiting the Site

*** World Class CAD Challenge 43-7 * - Create a template with banner, top navigation bar, editable region, lower navigation bar and copyright statement. Complete this task in less than 30 minutes to maintain your World Class ranking.**

Send your best time and a copy of your webpage for verification to the authors of these problems to have your name, location and time posted. See the web site for instructions.

www.worldclasscad.com