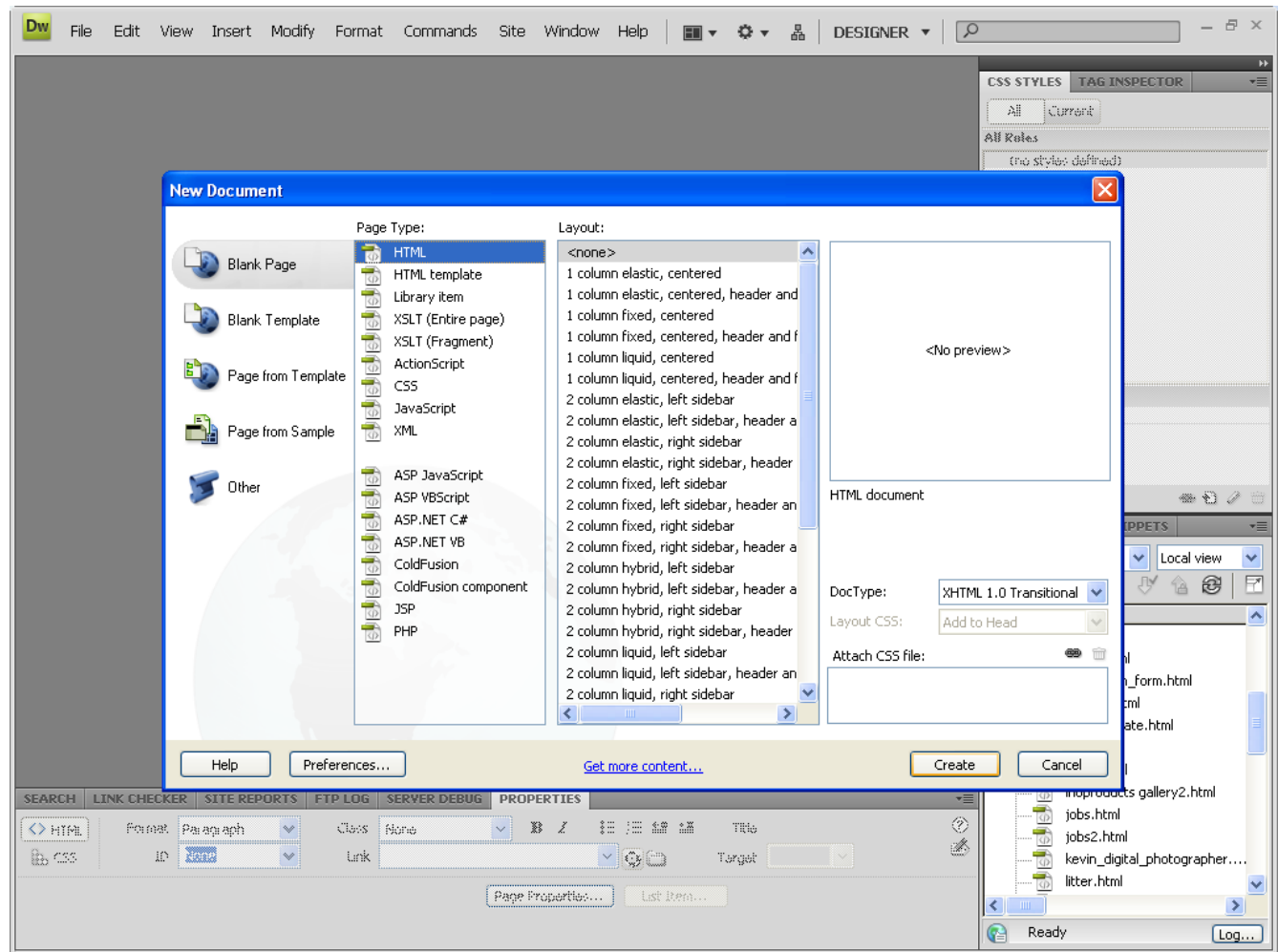


Create a Web Page with Spry Navigation Bar

March 30, 2010

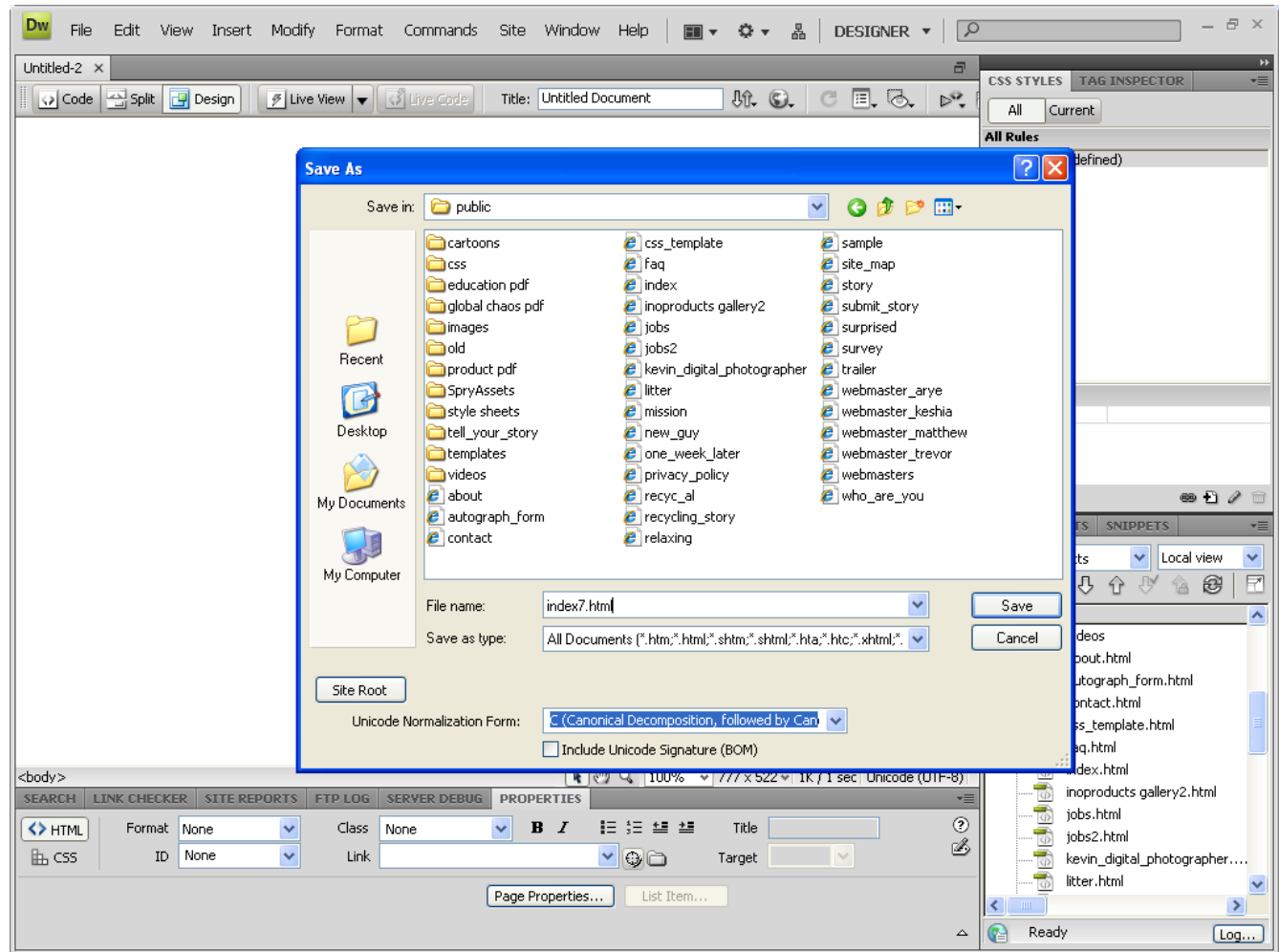
Open New HTML Web Page

Open a new web page by selecting File on the Menu bar, and pick Open. Select HTML as the page type and none from the layout list. Finally, we press the Create button to launch the new HTML page.



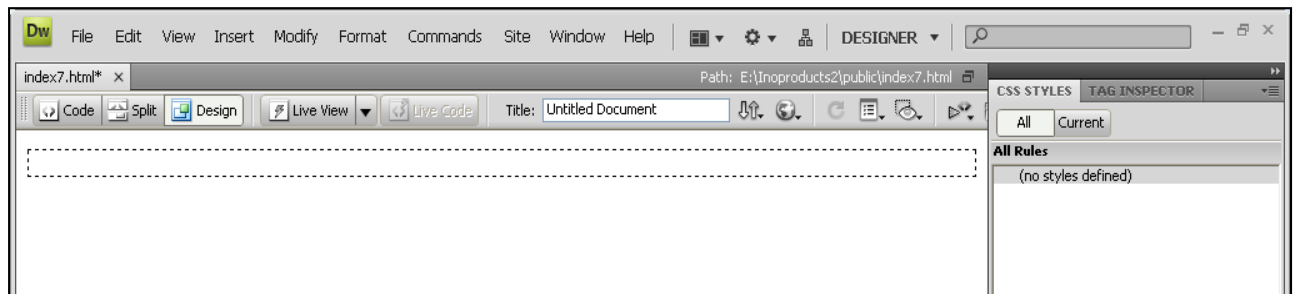
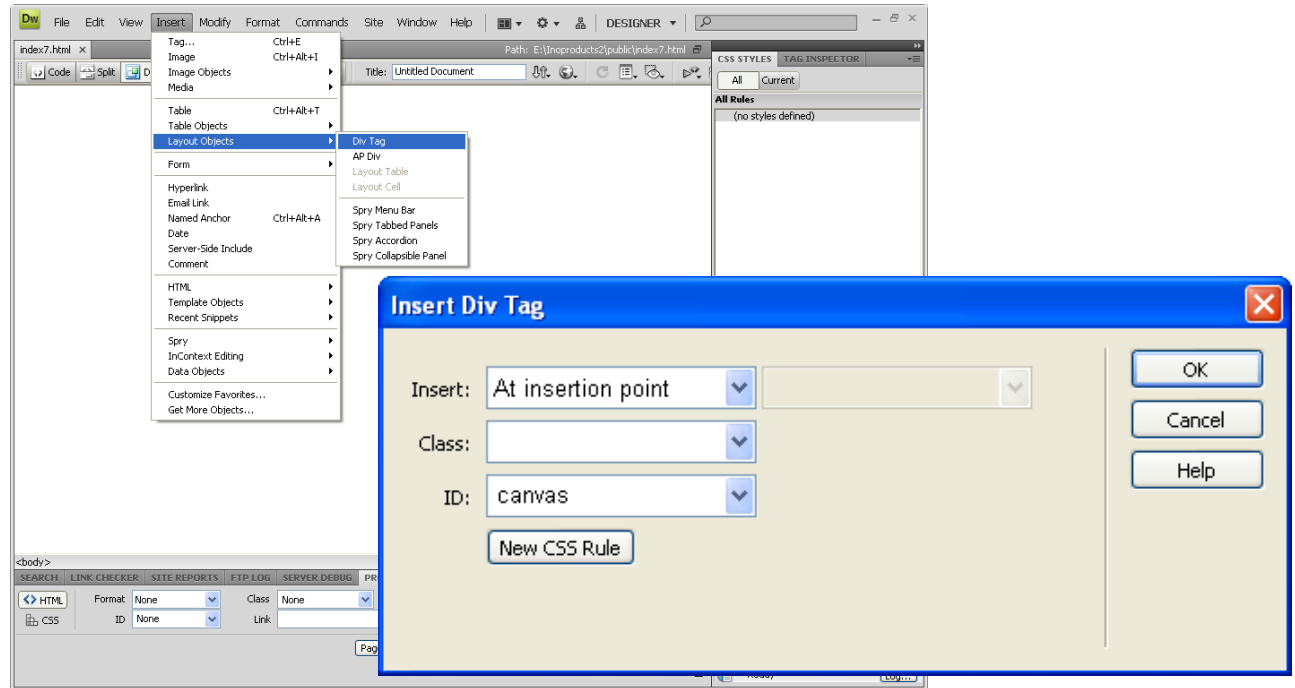
Save the HTML Web Page

We save the HTML web page as index7.html. This is one of proposed home pages, so if we adopt the design, we will drop the 7 from the name and just identify the document as index.html.



Insert a Canvas Division

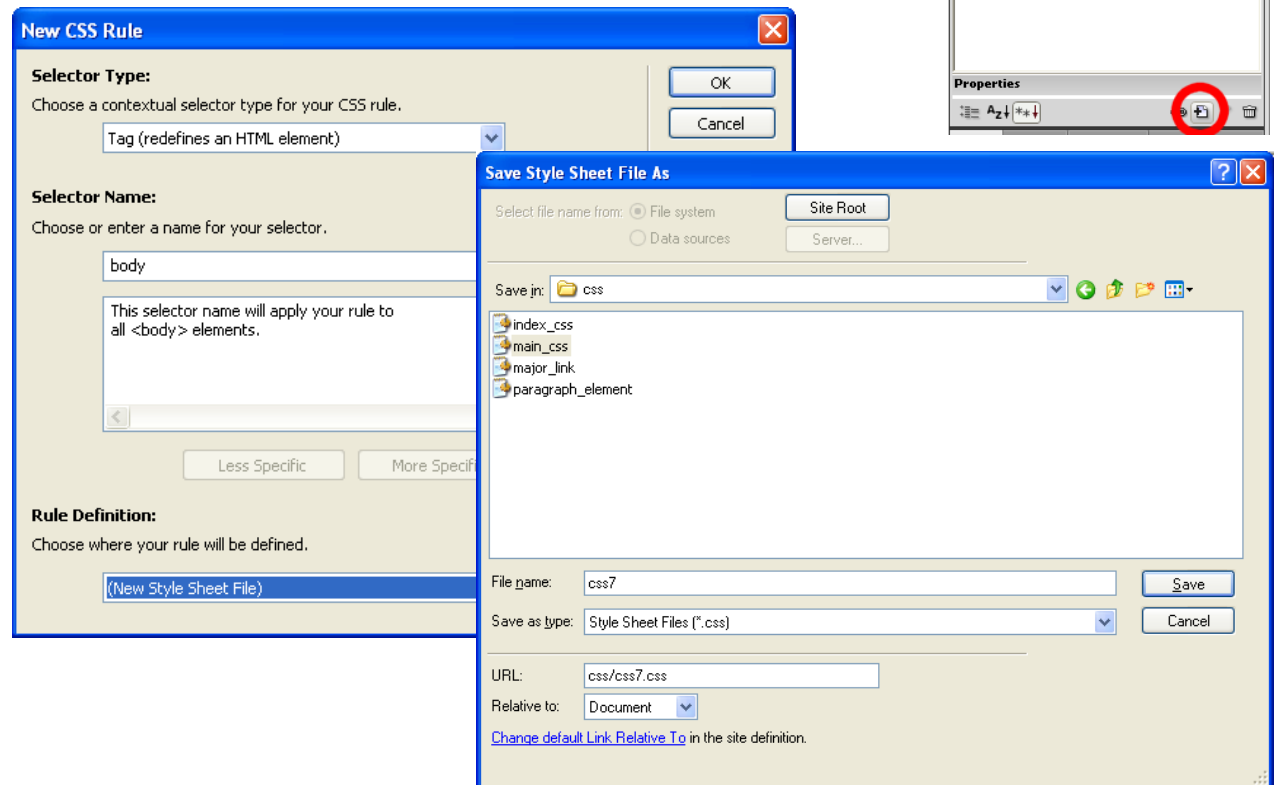
In our design, we will utilize a cascading style sheet (CSS). We will begin our definition by inserting a Div tag called canvas. We select Insert on the Menu bar, then Layout Objects, and then we choose Div Tag. We give the Div Tag an ID name “canvas” and then we press the OK command button. The division segment will appear in the Dreamweaver design layout as shown.



Create a Cascading Style Sheet

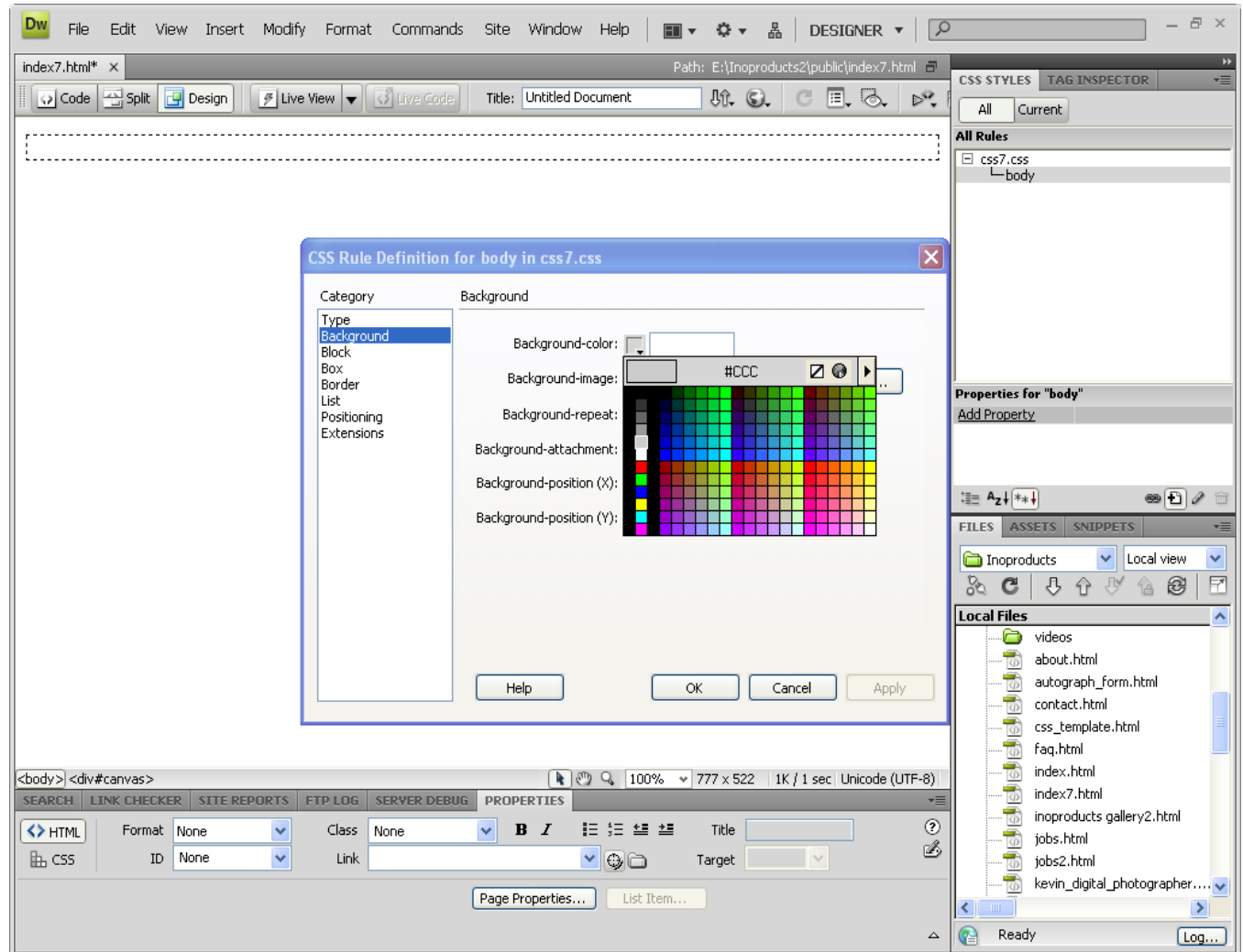
We will start to define the CSS style sheet. Select the plus sign at the bottom of the CSS Styles window and the New CSS Rule window will appear. For the contextual selector type, we choose Tag from the list box. We then type “body”, so we can describe the background of the overall page.

We will save the rule definition to an external style sheet, so we can change the web pages globally instead of one page at a time. We press OK and the Save Style Sheet window appears. In our CSS folder under the HTML folder, we save the file as css7.



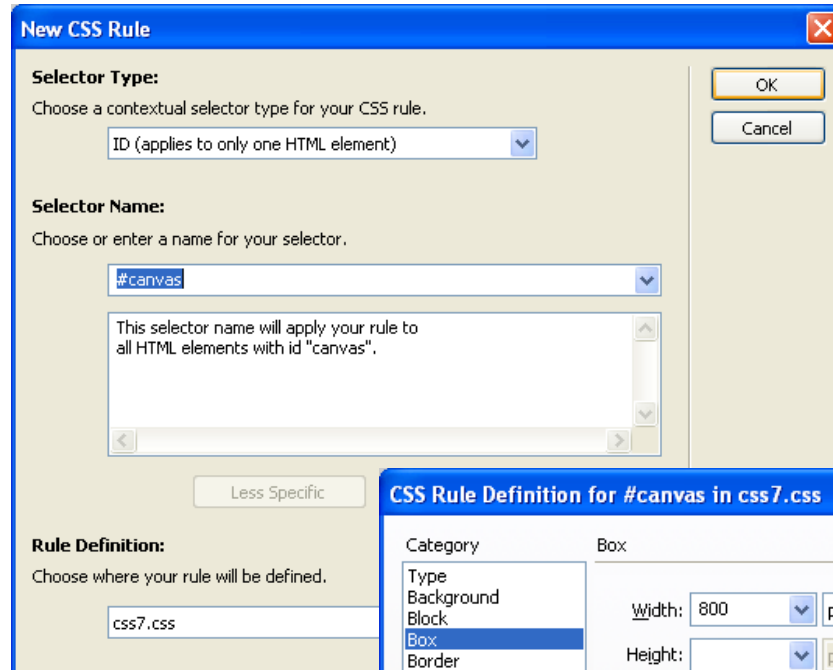
Set the Body Background Color

Once we save the external style sheet, we see the Rule Definition window for the body appear. We set the background color to #CCC and press the OK command button to save the rule.

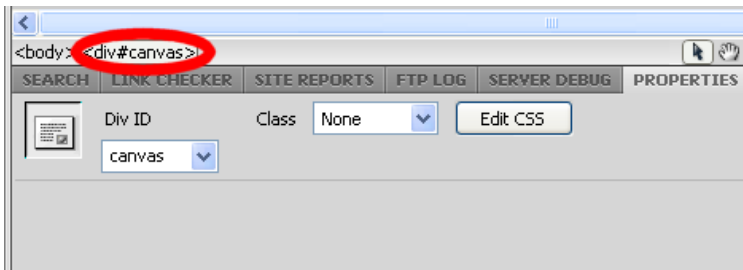
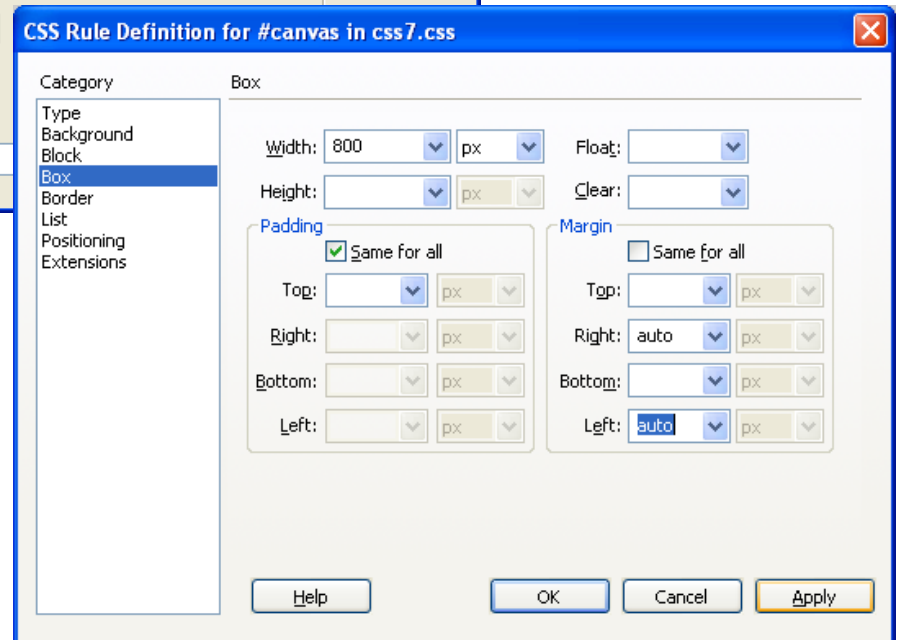


Define the Canvas Div

Next, we highlight the `div#canvas` on the Dreamweaver status bar and we select the plus sign at the bottom of the CSS Styles window and the New CSS Rule window will appear. We do not need to change any settings, so we press the OK button.

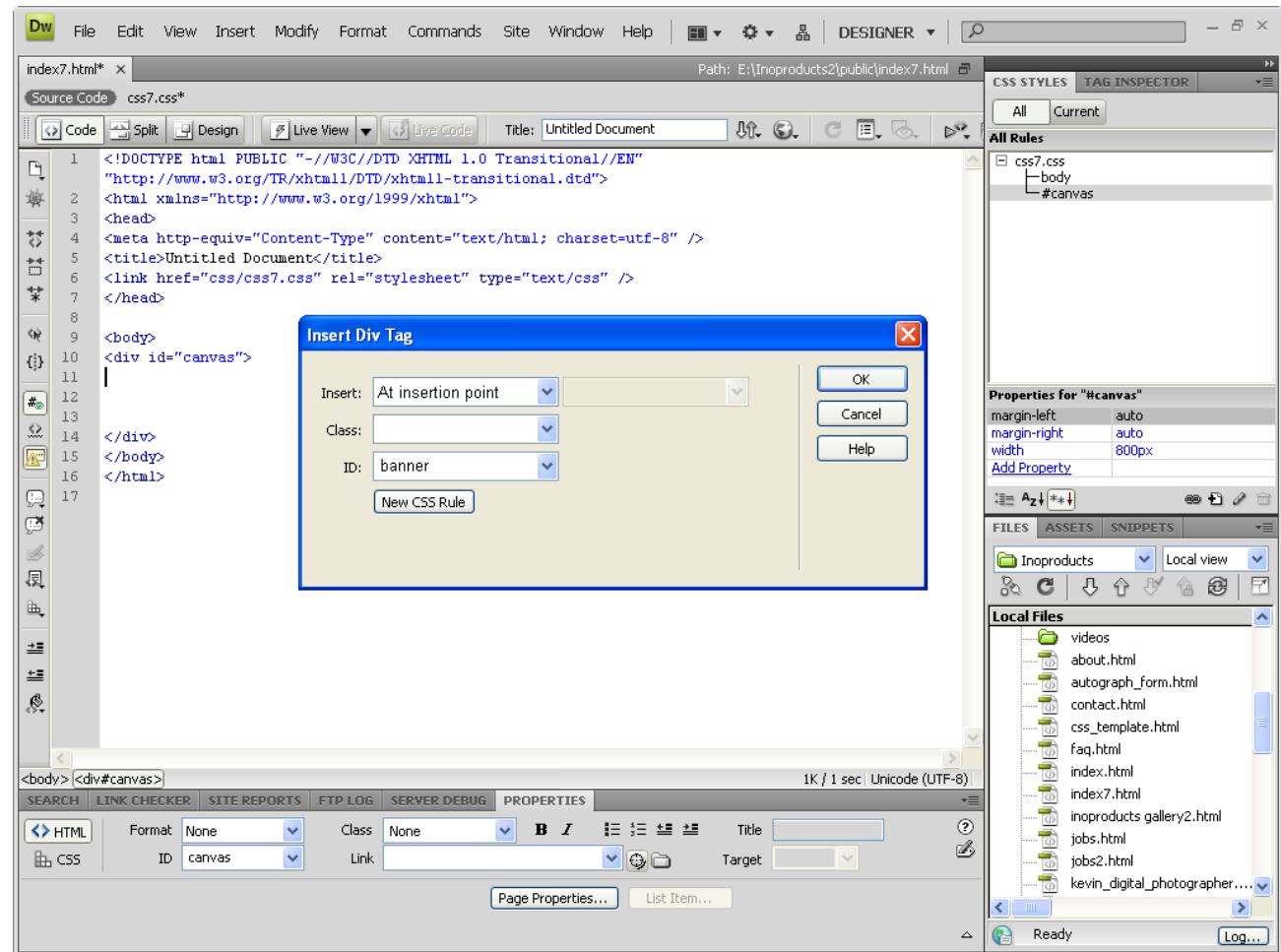


Under the Box Category, we make the width 800 pixels and to center the web page, we set the left and right margins to "auto"



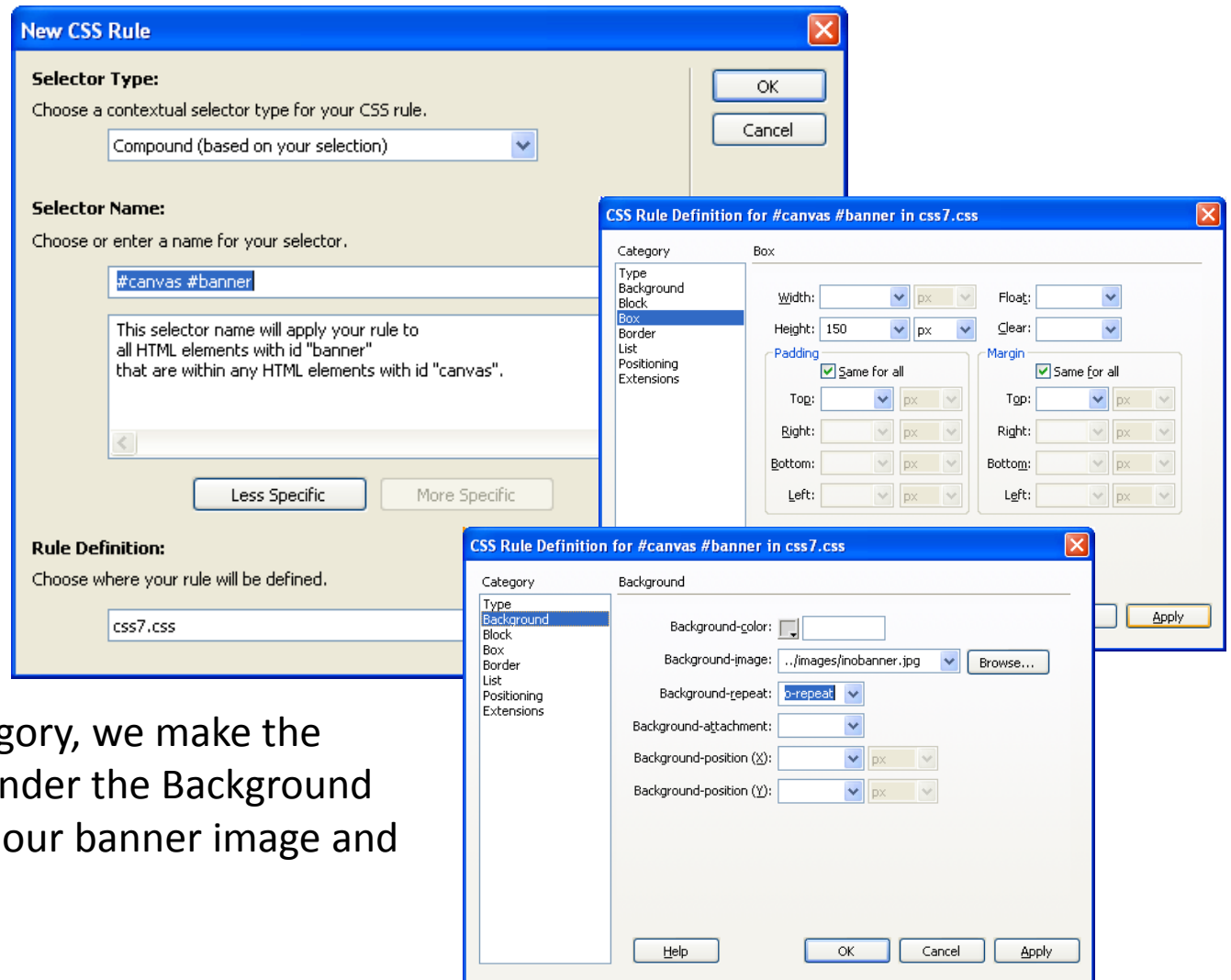
Insert the Banner Division

Inside the canvas division, we will insert the banner division.



Define the Banner in CSS

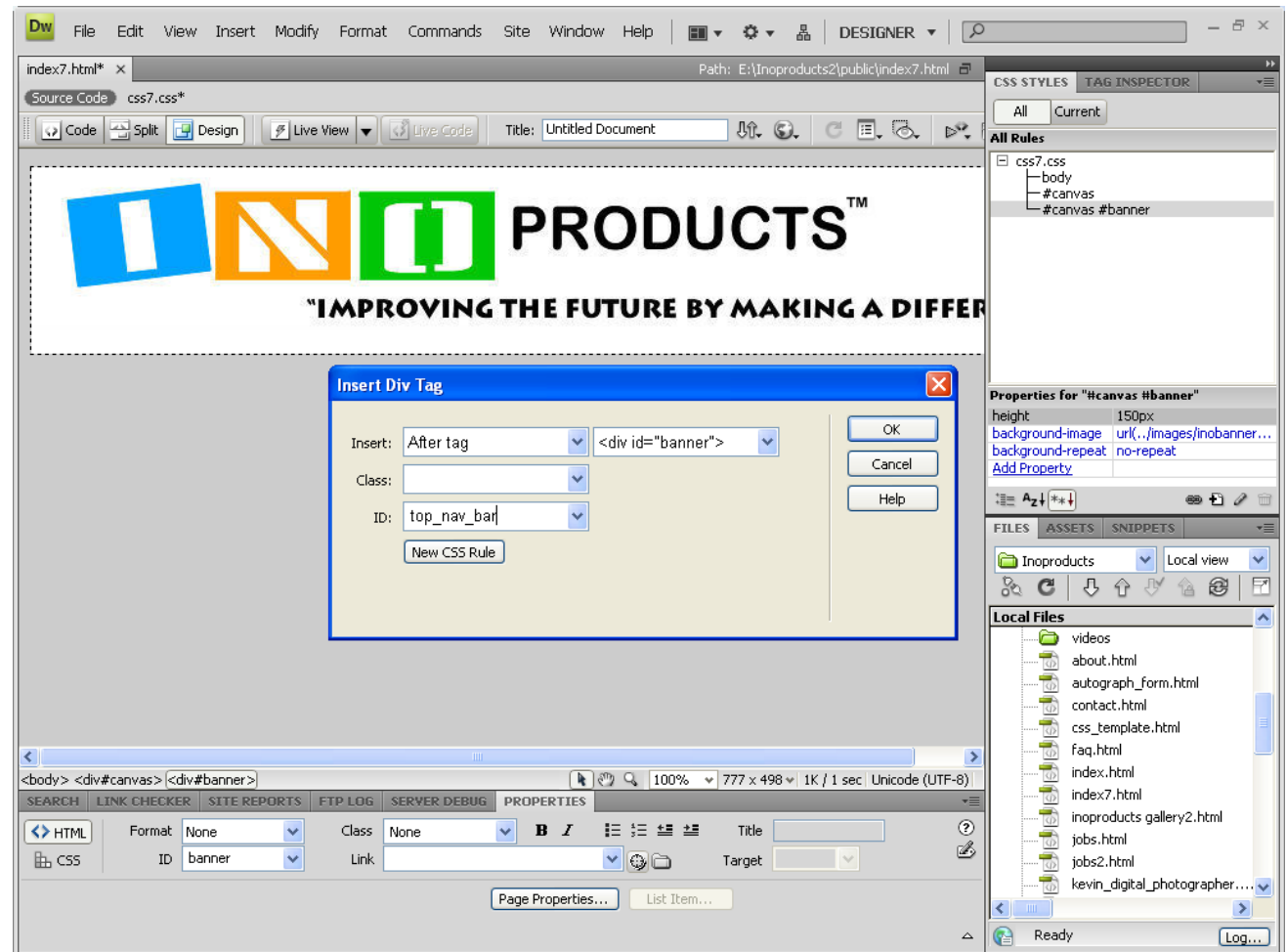
Next, we highlight the div#banner on the Dreamweaver status bar and we select the plus sign at the bottom of the CSS Styles window and the New CSS Rule window will appear. We do not need to change any settings, so we press the OK button.



Under the Box Category, we make the height 150 pixels. Under the Background Category, we select our banner image and "no repeat".

Insert the Navigation Bar Division

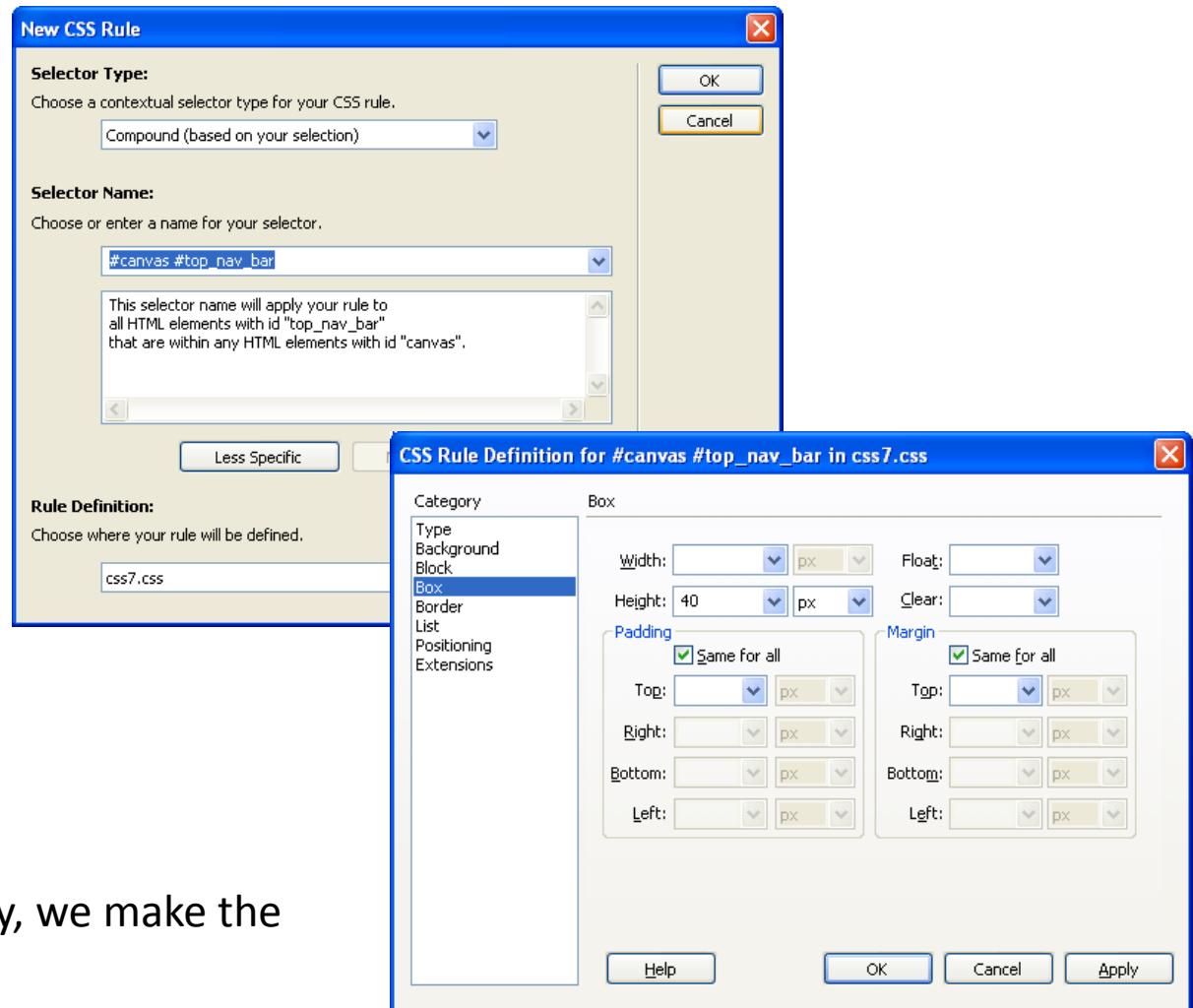
After the banner division, we will insert the top navigation bar division. At the Insert textbox, we pick “after tag” and to the right, we select the banner div. For our ID, we type “top_nav_bar”.



Define the Navigation Bar Division

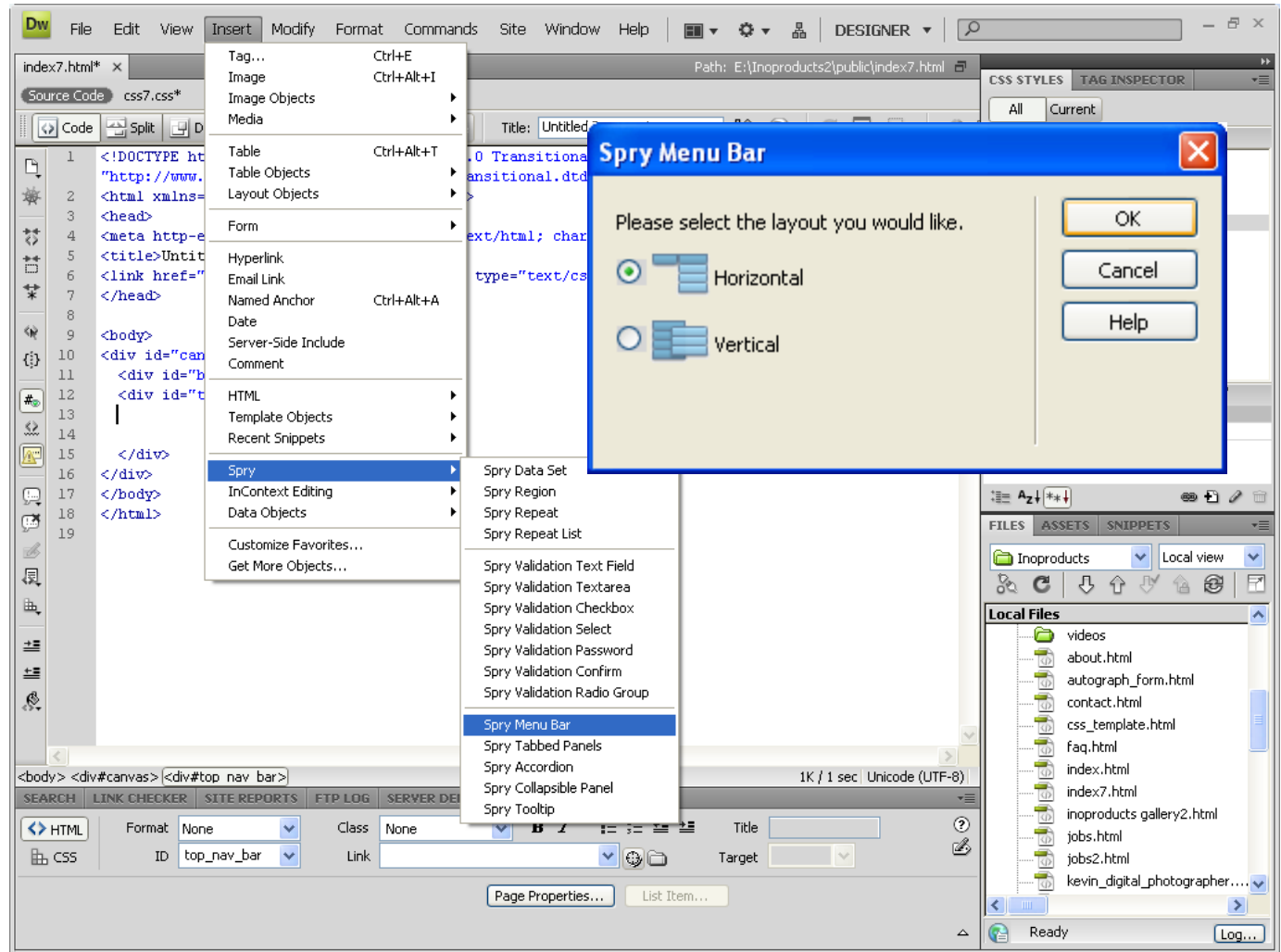
Next, we highlight the `div#top_nav_bar` on the Dreamweaver status bar and we select the plus sign at the bottom of the CSS Styles window and the New CSS Rule window will appear. We do not need to change any settings, so we press the OK button.

Under the Box Category, we make the height 40 pixels.



Insert a Spry Navigation Bar

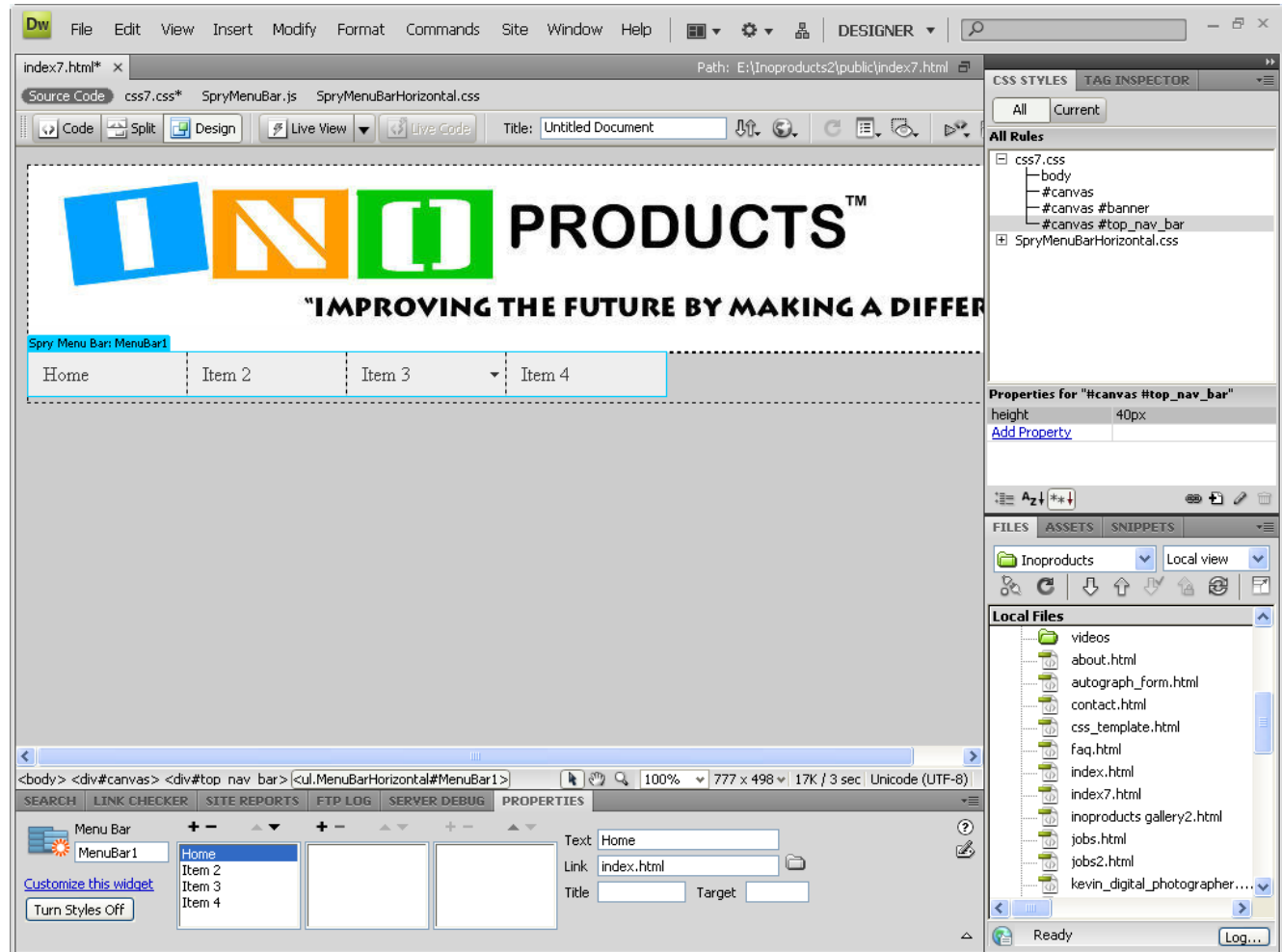
In this web page, we will insert a Spry Navigation Bar by selecting Insert on the Menu bar. We will pick Spry from the menu list and then we will choose Horizontal layout from the Spry Menu Bar window.



Define the First Button

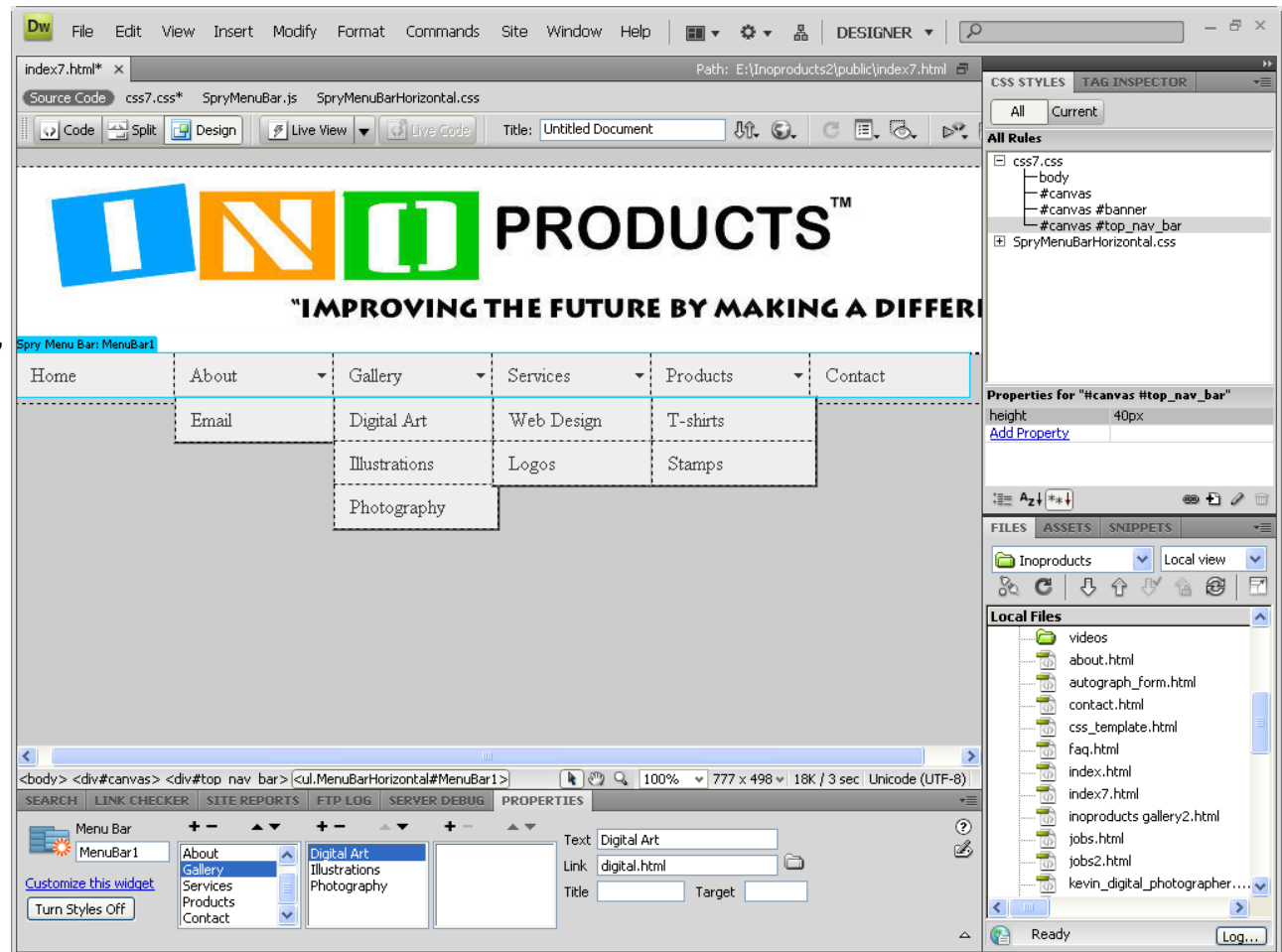
The Spry Menu will appear inside the top navigation division. We can select Item 1 in the Properties window. We type Home in the text textbox. For the link, we type index.html.

We can remove the submenu items by pressing the negative sign in the second column.



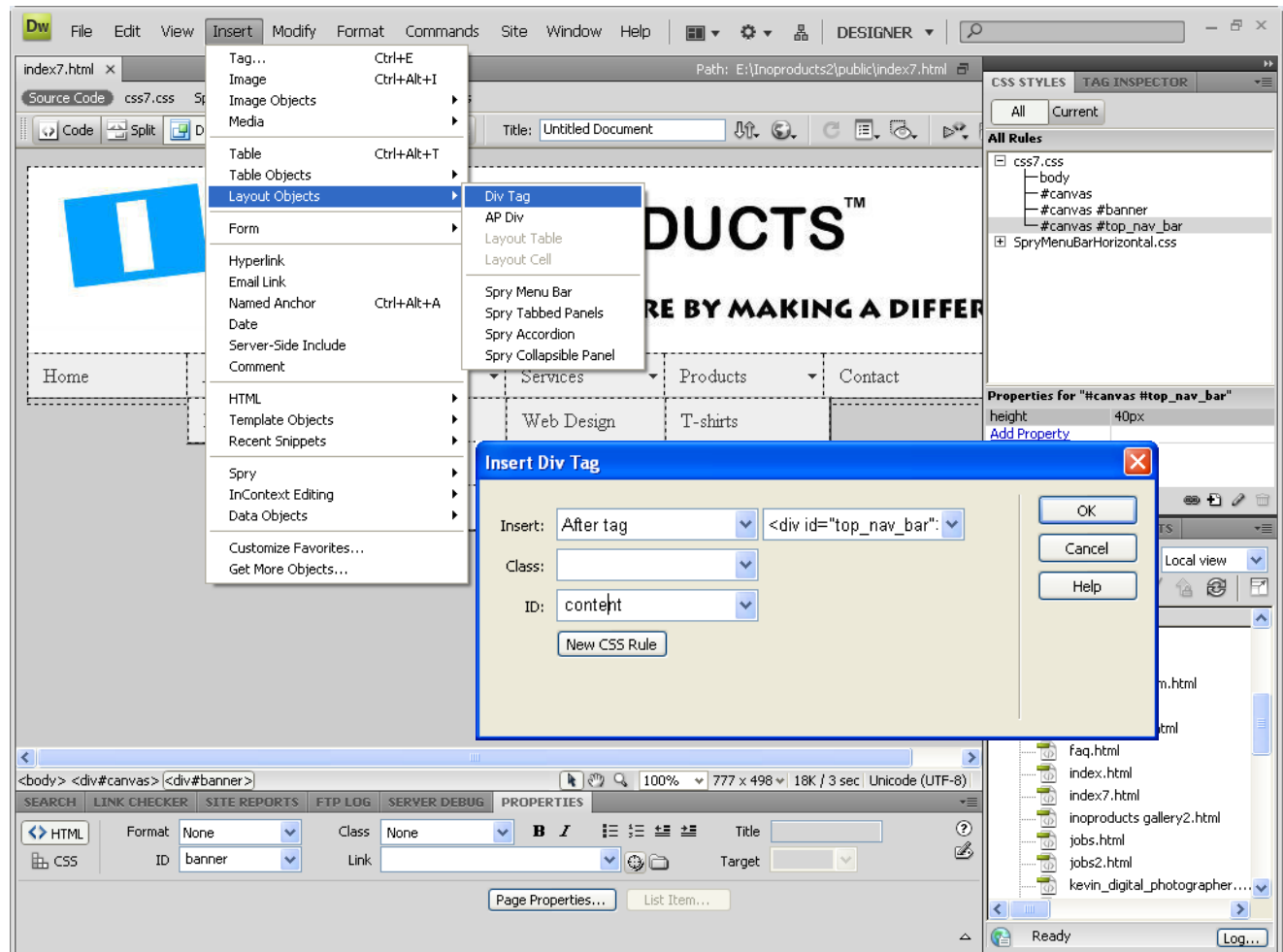
Define the Items in the Spry Navigation Bar

We label the rest of the Spry Navigation Bar by adding or subtracting items from each column. If a primary link such as Gallery has a submenu, we make a list for the gallery in the next column. In the example shown, we have Digital Art, Illustrations and Photography in the second column. Only Home and Contact are lone hyperlinks. We give each button a named HTML file for a link.



Insert the Content Division

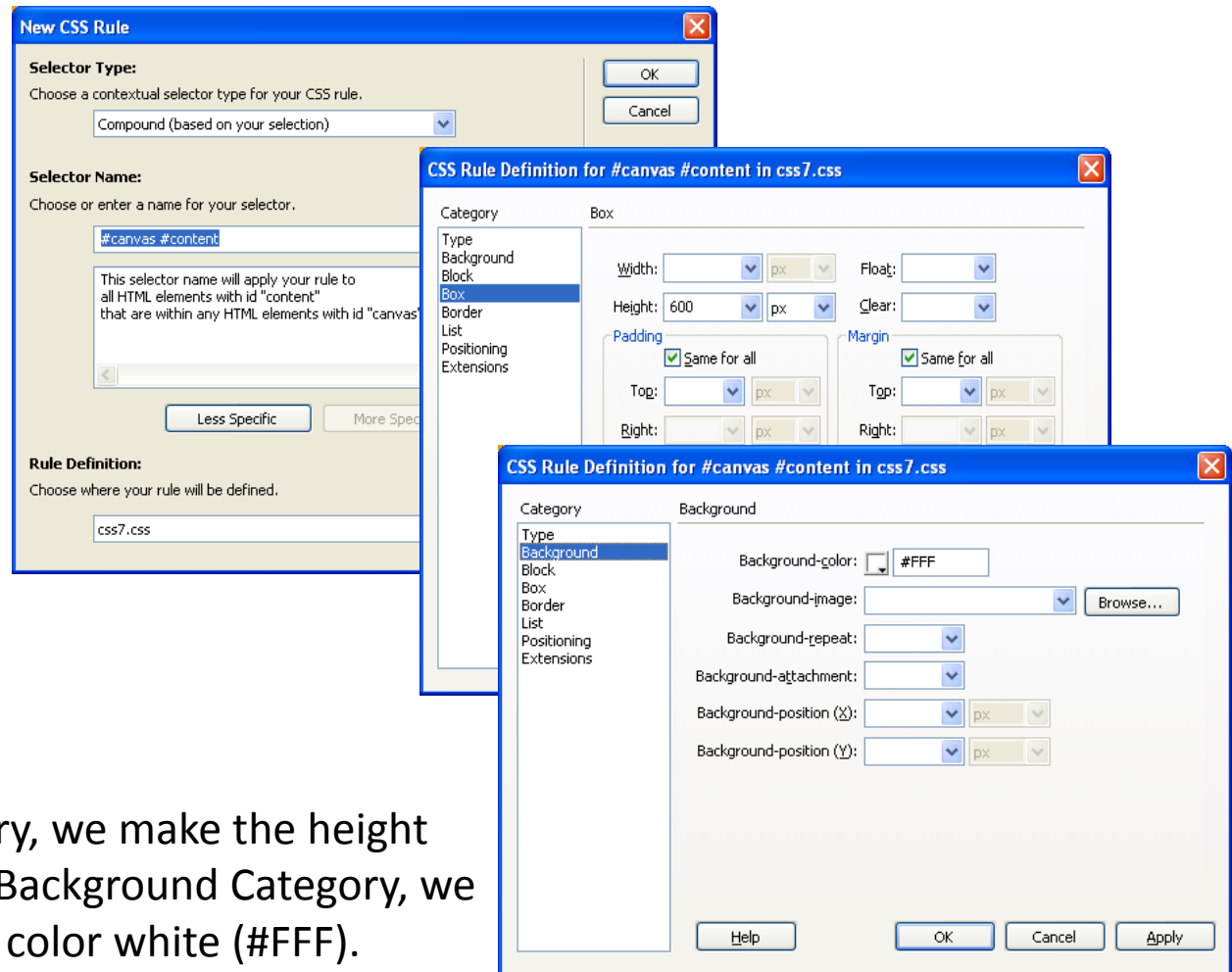
After the top navigation bar division, we will insert the content division. At the Insert textbox, we pick “after tag” and to the right, we select the banner div. For our ID, we type “content”.



Define the Content Division

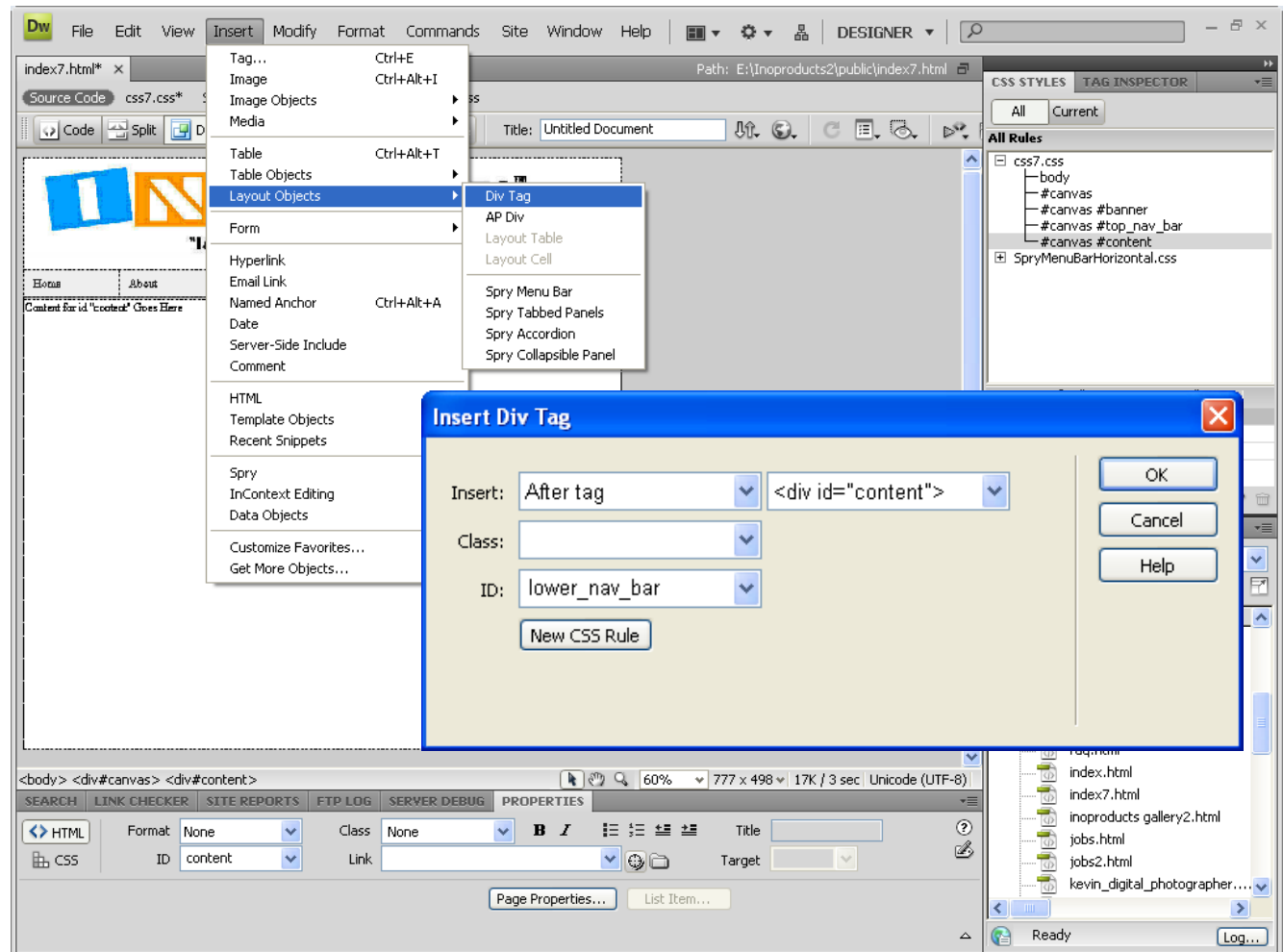
Next, we highlight the `div#content` on the Dreamweaver status bar and we select the plus sign at the bottom of the CSS Styles window and the New CSS Rule window will appear. We do not need to change any settings, so we press the OK button.

Under the Box Category, we make the height 600 pixels. Under the Background Category, we made the background color white (#FFF).



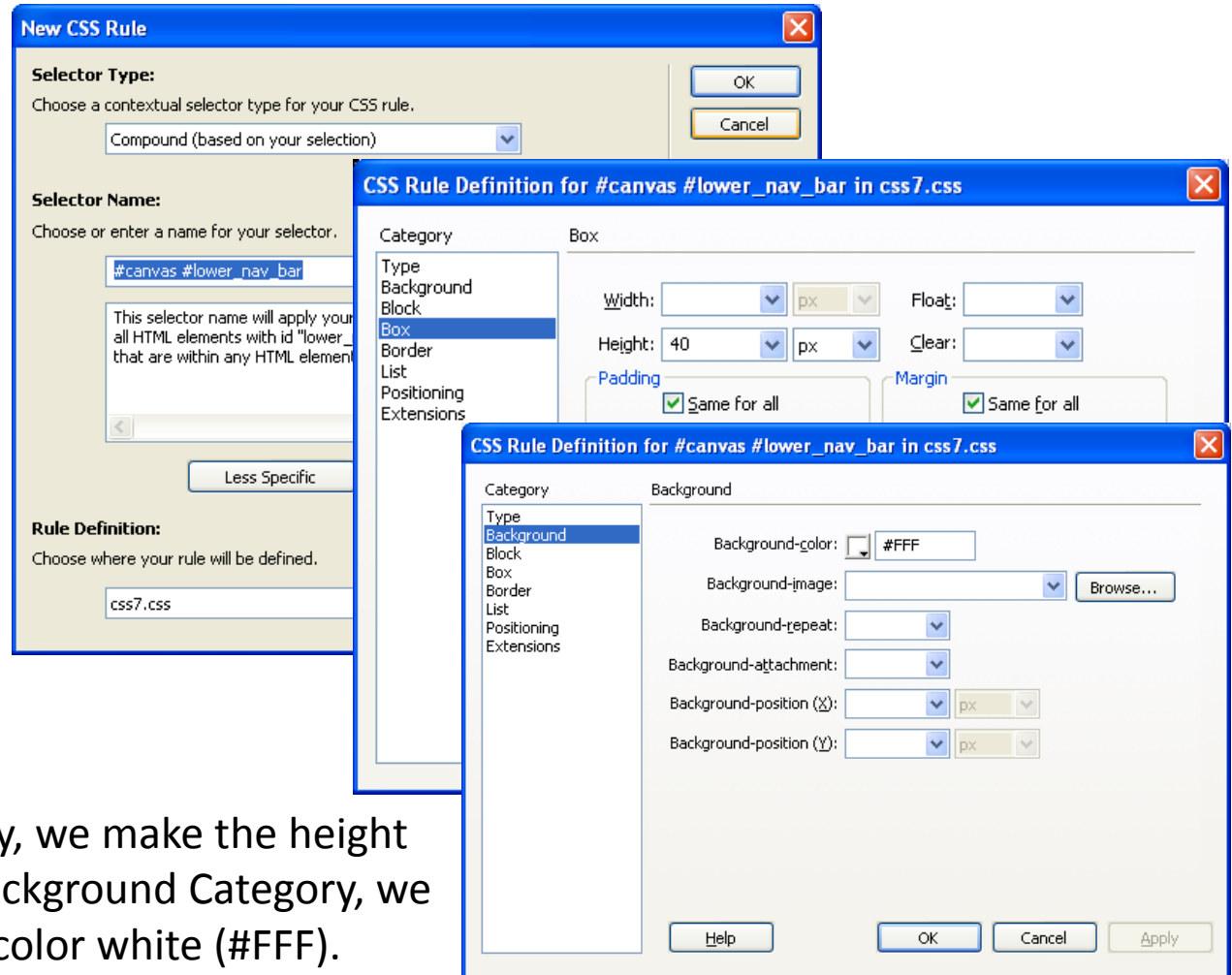
Insert Lower Navigation Bar Division

After the content division, we will insert the lower navigation bar division. At the Insert textbox, we pick “after tag” and to the right, we select the banner div. For our ID, we type “lower_nav_bar”.



Define Lower Navigation Bar Division

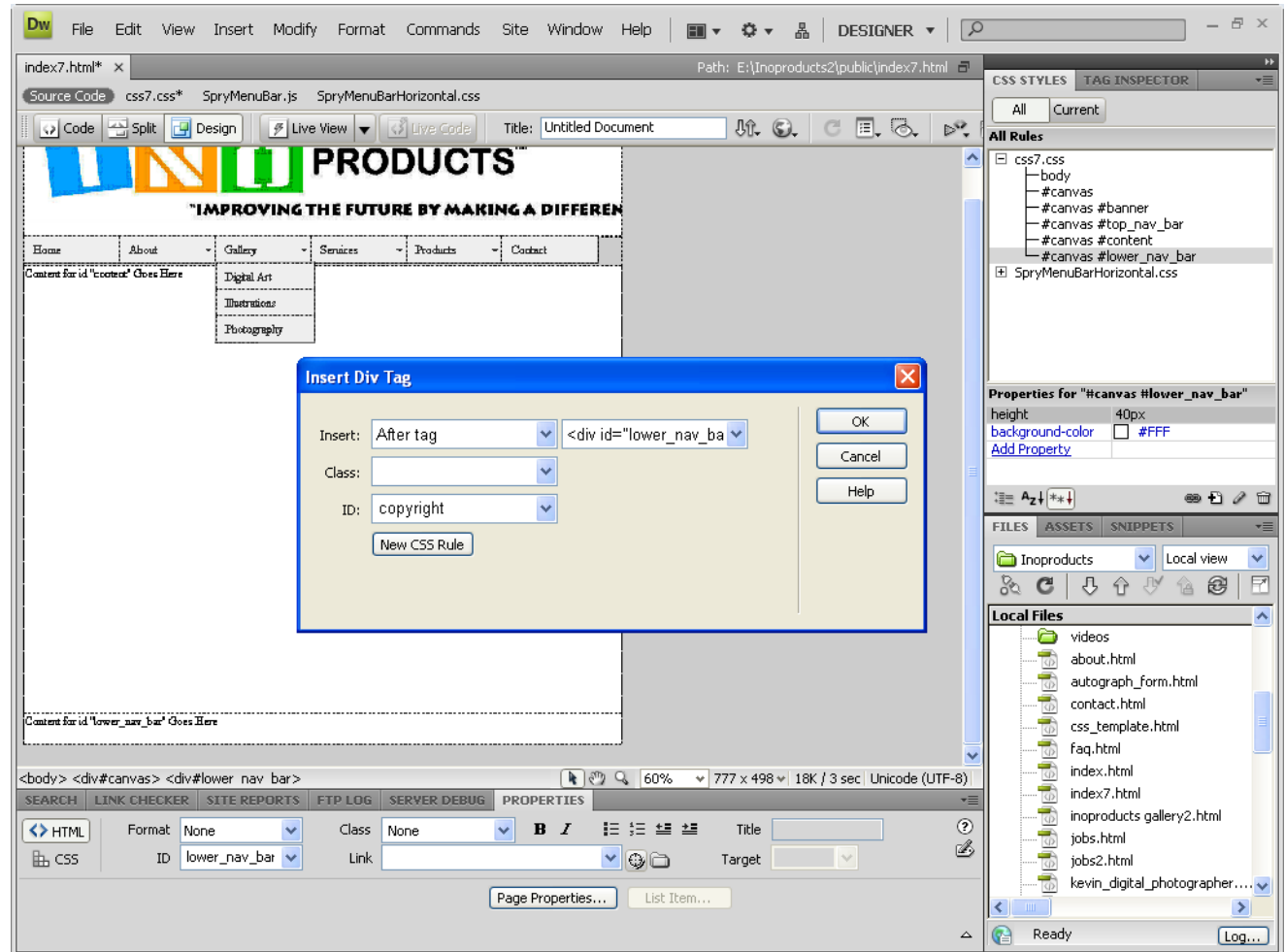
Next, we highlight the `div#lower_nav_bar` on the Dreamweaver status bar and we select the plus sign at the bottom of the CSS Styles window and the New CSS Rule window will appear. We do not need to change any settings, so we press the OK button.



Under the Box Category, we make the height 40 pixels. Under the Background Category, we made the background color white (#FFF).

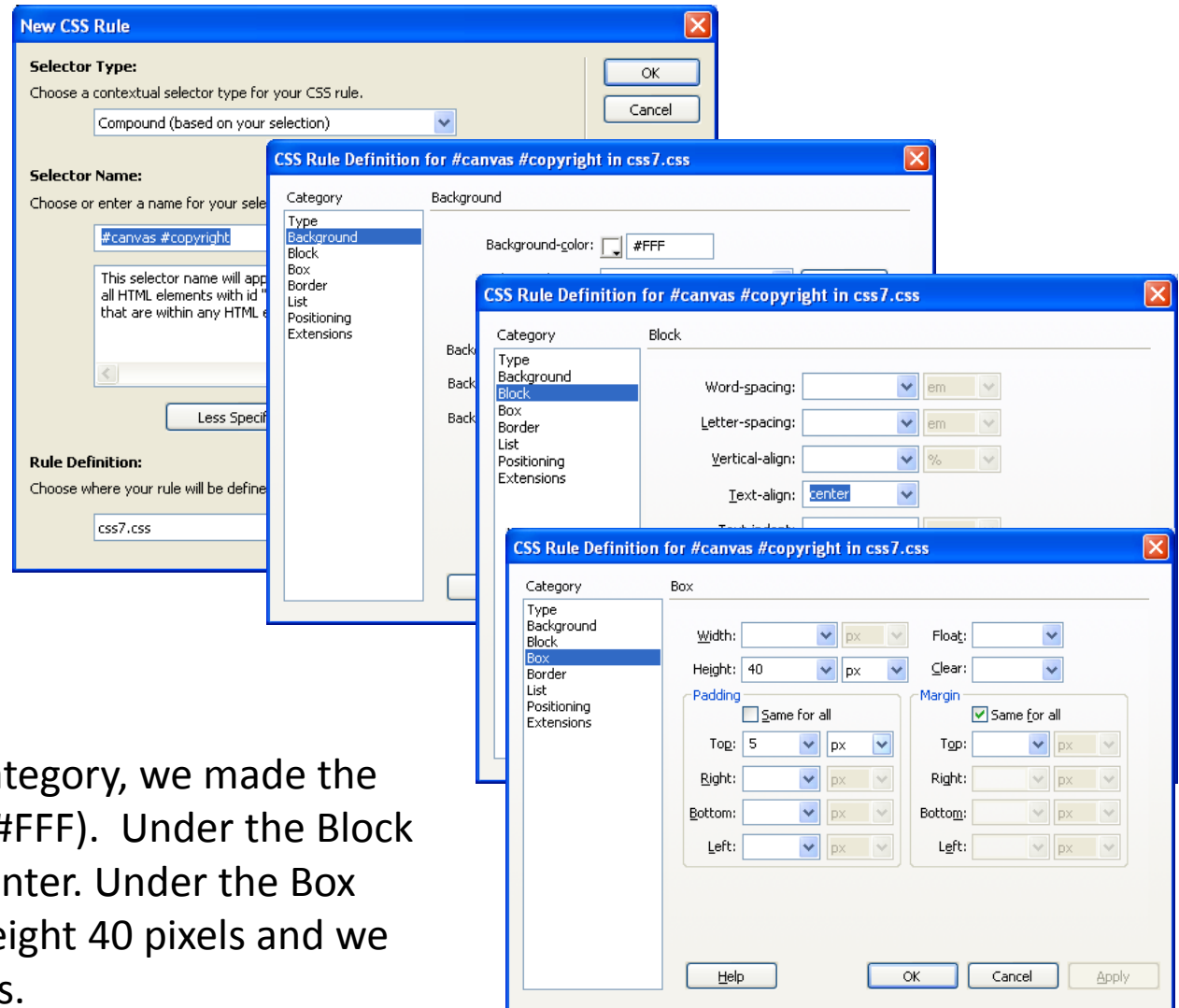
Insert the Copyright Division

After the lower navigation bar division, we will insert the copyright division. At the Insert textbox, we pick “after tag” and to the right, we select the banner div. For our ID, we type “copyright”.



Define the Copyright Division

Next, we highlight the `div#copyright` on the Dreamweaver status bar and we select the plus sign at the bottom of the CSS Styles window and the New CSS Rule window will appear. We do not need to change any settings, so we press the OK button.



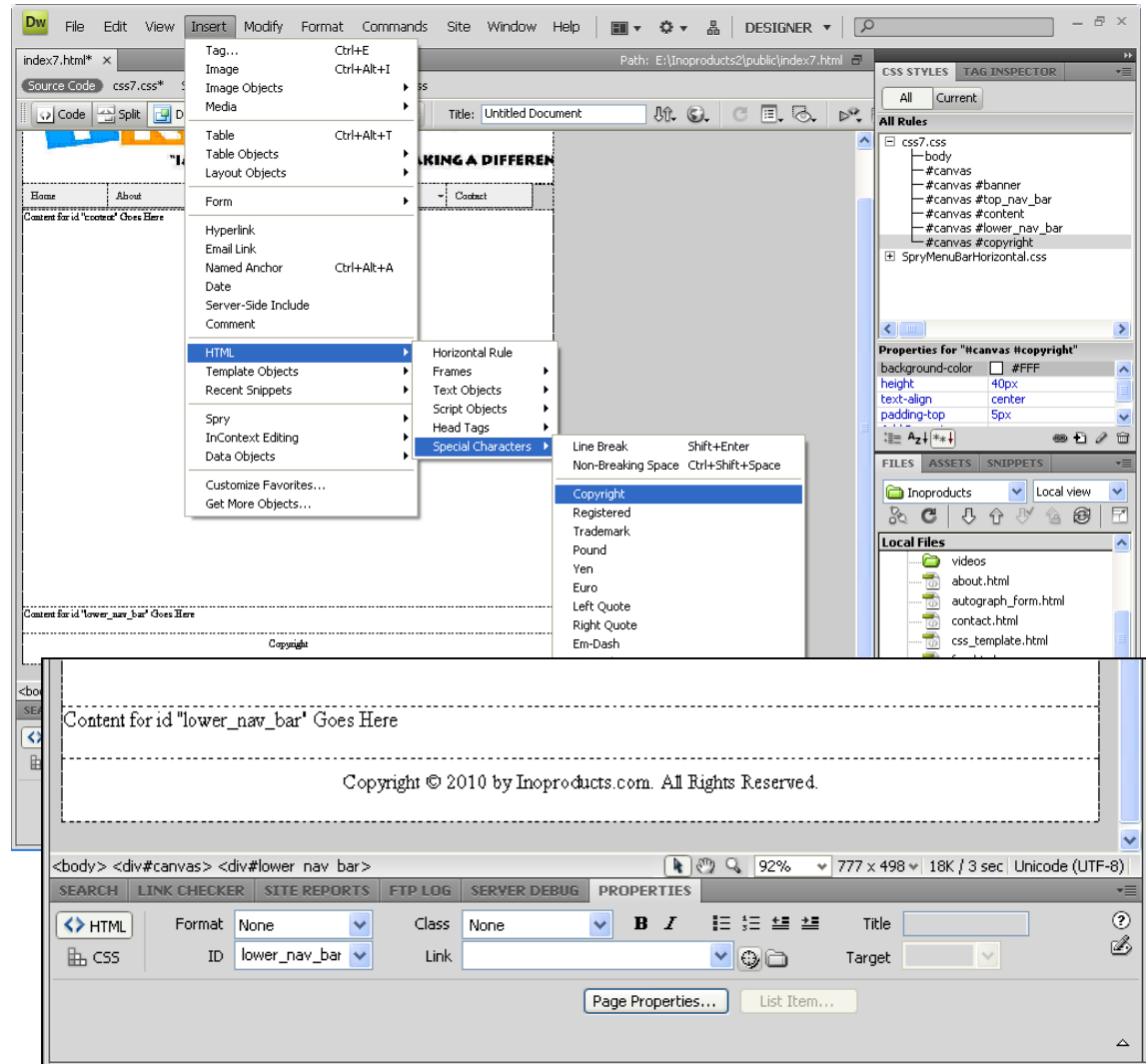
Under the Background Category, we made the background color white (`#FFF`). Under the Block Category, we text align center. Under the Box Category, we make the height 40 pixels and we set the padding to 5 pixels.

Insert the Copyright Statement

For our copyright statement, we type “Copyright 2010 by Inoproducts.com. All Rights Reserved.”

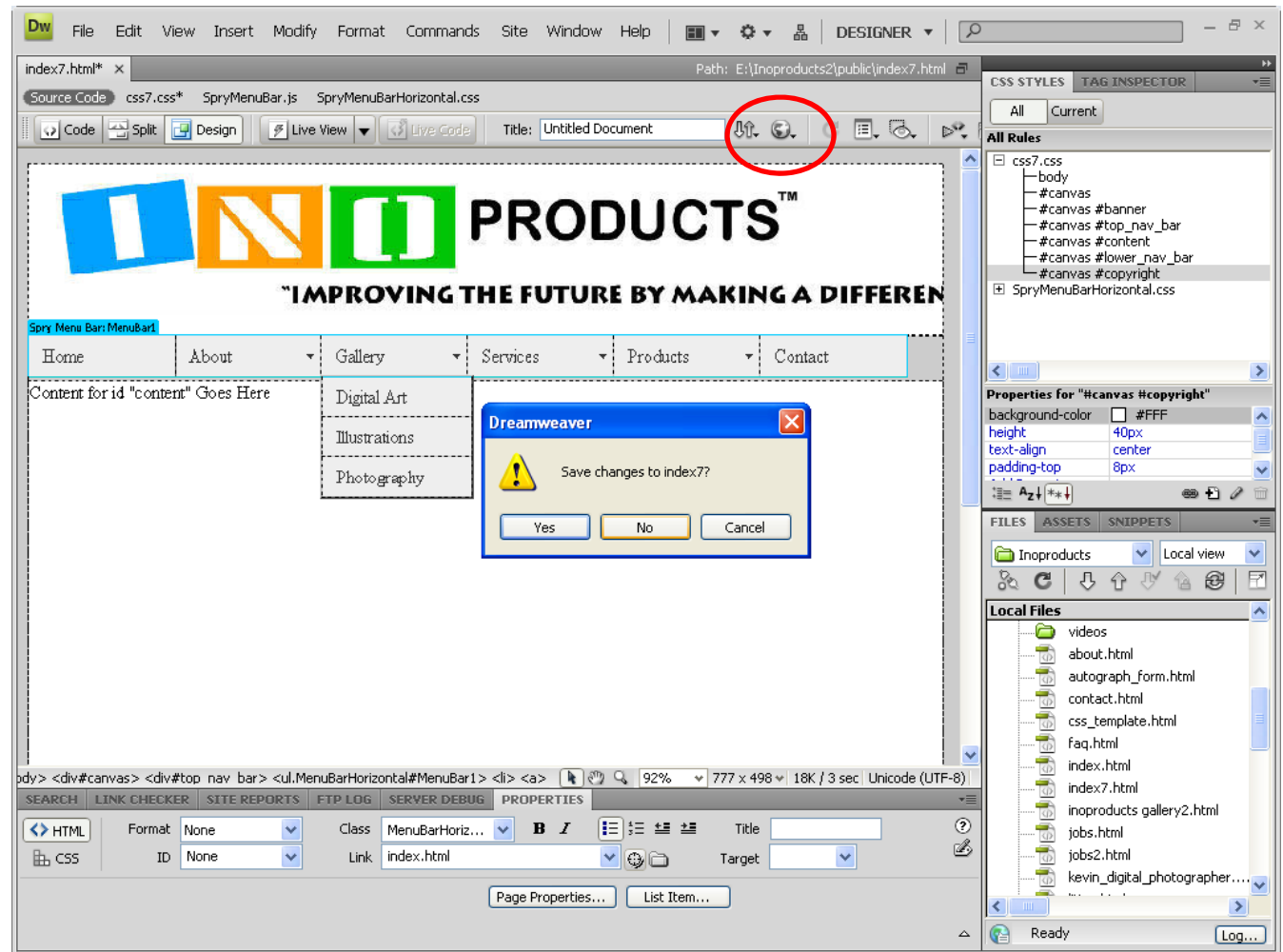
Place the cursor after the word copyright and pick Insert on the Menu bar and then HTML, Special Characters and finally Copyright. The © symbol will appear.

Copyrights protect the content of the website from illegal distribution and the statement should appear at the bottom of each web page.



Save and Preview in Internet Explorer

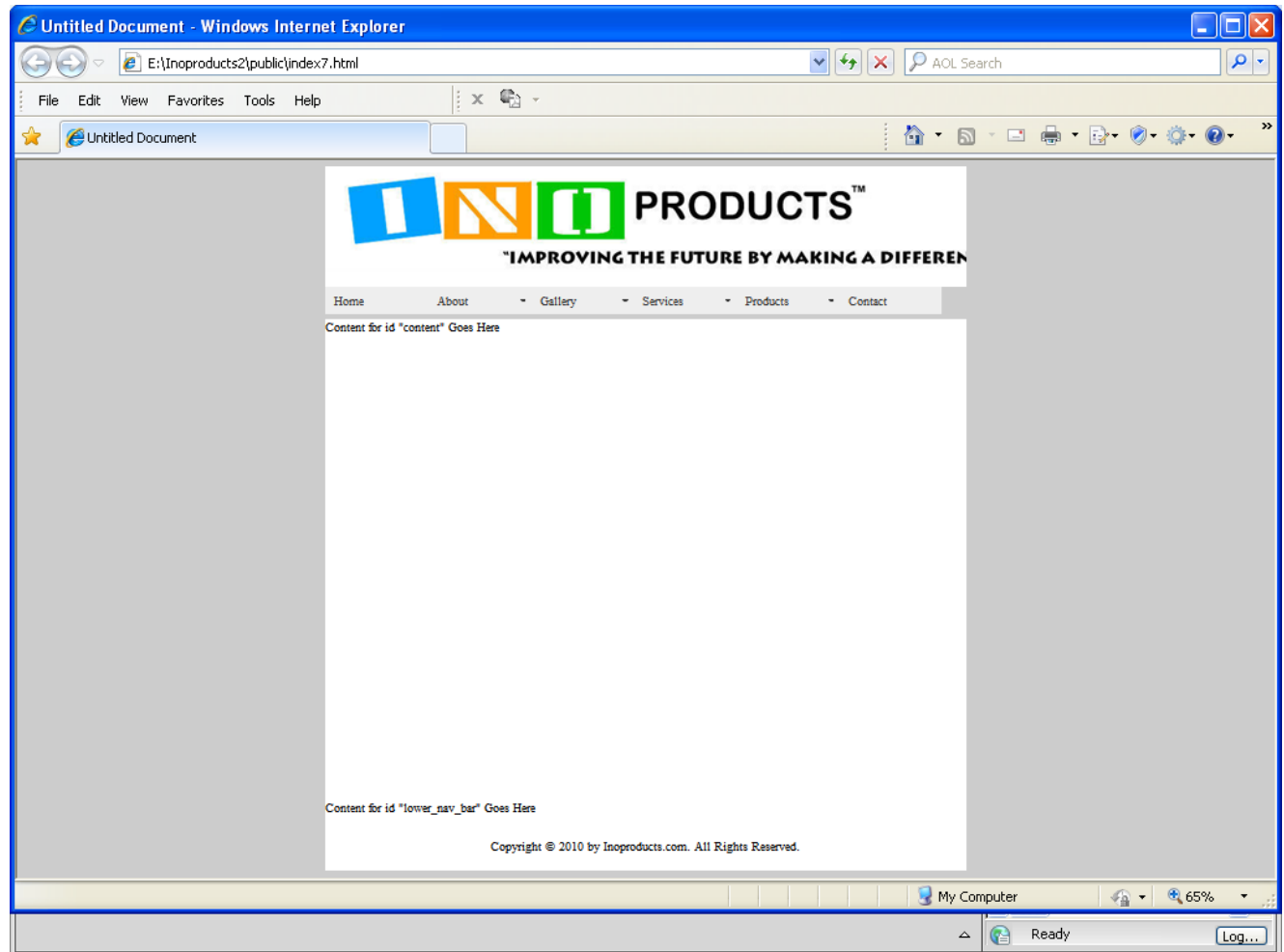
To preview your web page in a web browser, we select the preview button circled on the figure.



Web Page in Internet Explorer

Shown in the figure is the web page. Now, we have to define the upper and lower navigation bars.

When we save the web page before viewing the document to CSS definitions for the Spry Navigation Bar are saved.



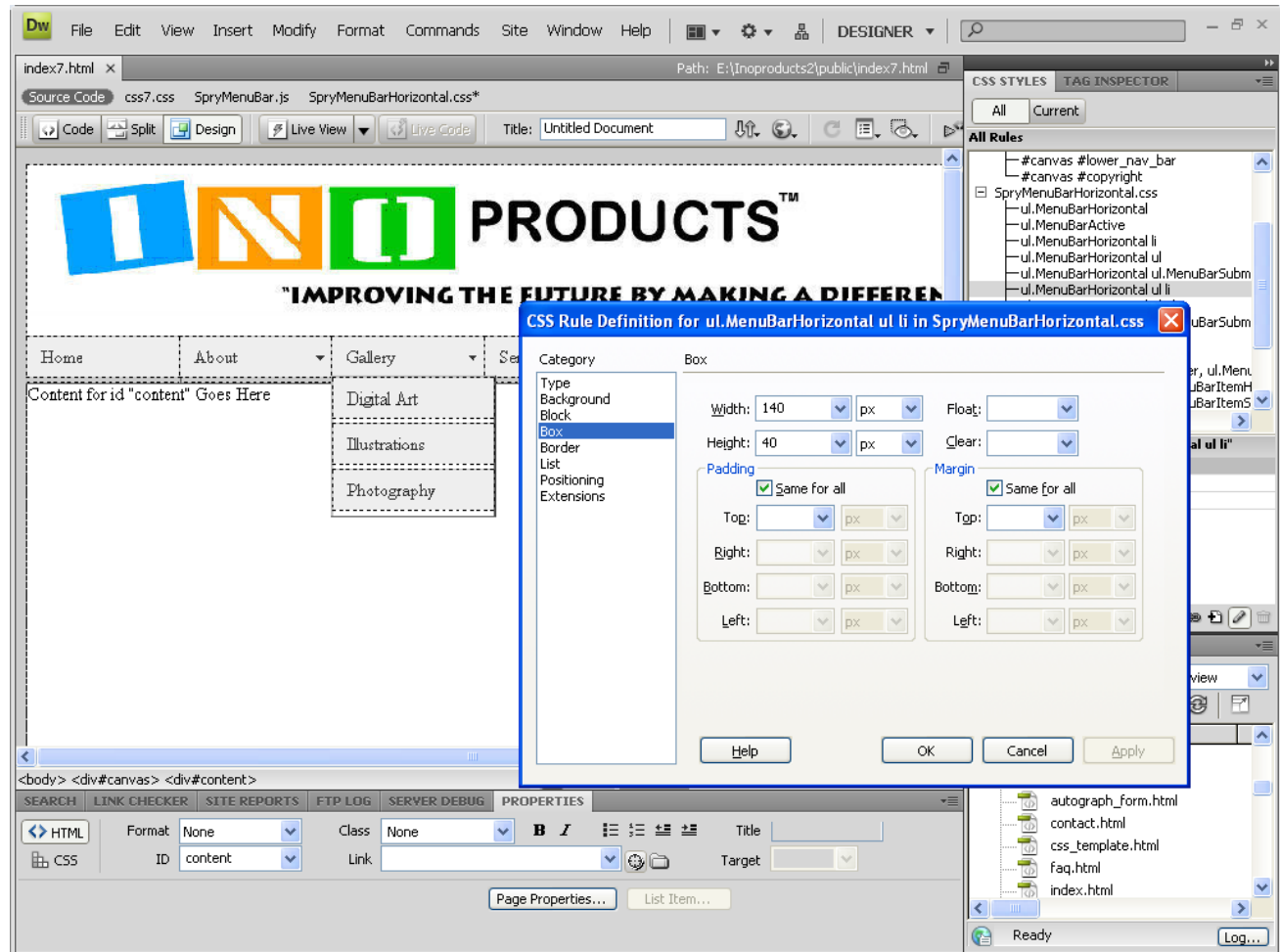
Change the Width of the List Buttons

We select the Spry CSS li definition as shown in the CSS Styles window, and we make the box, which represents the button's width 133 pixels wide and the height 40 pixels tall.

The screenshot displays the Adobe Dreamweaver interface. A dialog box titled "CSS Rule Definition for ul.MenuBarHorizontal li in SpryMenuBarHorizontal.css" is open, showing the "Box" category selected. The "Width" is set to 133 px and the "Height" is set to 40 px. The "Float" is set to "left" and "Clear" is empty. The "Padding" and "Margin" sections are both checked for "Same for all" with all values set to 0. The background shows a website design with a navigation menu and a "PRODUCTS" header. The "CSS STYLES" panel on the right shows the selected rule, and the "Local Files" panel at the bottom right shows the project structure.

Change the Width of the Dropdown Buttons

We select the Spry CSS ul li definition as shown in the CSS Styles window, and we make the box, which represents the submenu button's width 140 pixels wide and the height 40 pixels tall.



Define the Spry UL Tag

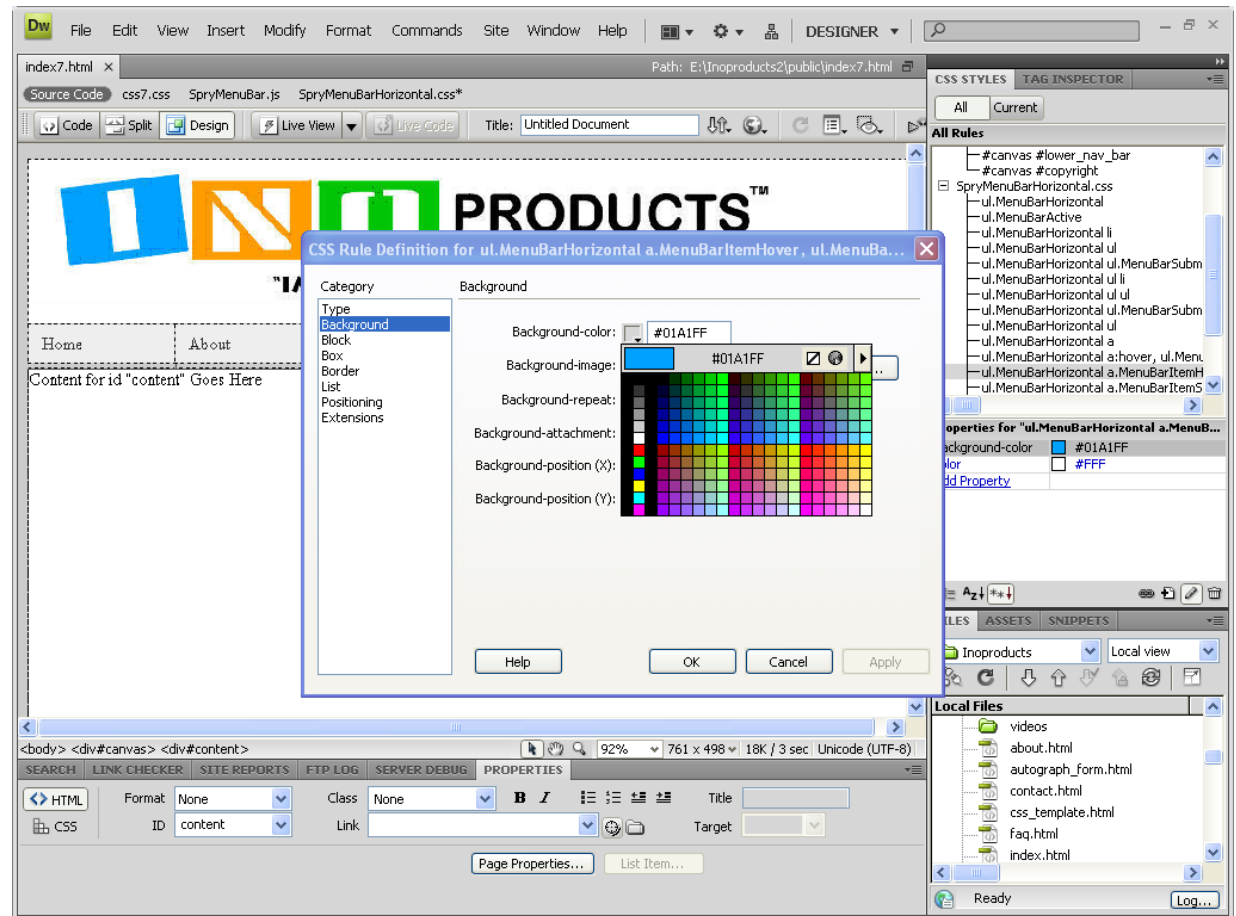
We select the Spry CSS ul definition as shown in the CSS Styles window, and we make the box, which represents the submenu button's width 140 pixels wide and the height 40 pixels tall.

The screenshot displays the Adobe Dreamweaver interface. The main workspace shows a website layout with a navigation menu. A dialog box titled "CSS Rule Definition for ul.MenuBarHorizontal ul in SpryMenuBarHorizontal.css" is open, showing the "Box" category selected. The "Width" is set to 140 px and the "Height" is set to 40 px. The "Padding" and "Margin" sections have "Same for all" checked. The "Properties" panel at the bottom shows the "Menu Bar" widget with a submenu open, listing "Digital Art", "Illustrations", and "Photography". The "CSS STYLES" window on the right shows the "All Rules" list, with the "ul.MenuBarHorizontal ul" rule selected.

Define the Hover Color

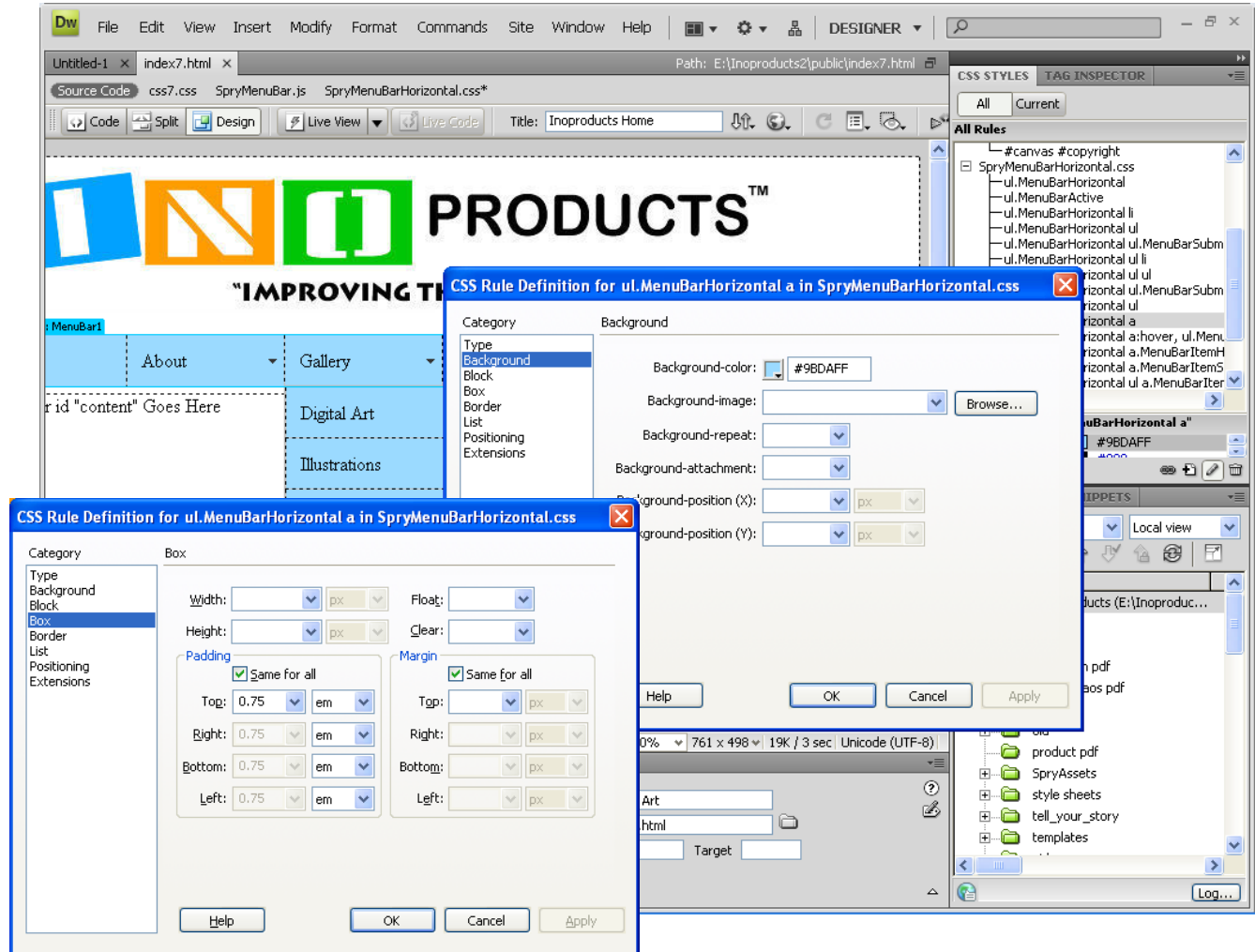
In the `ul.MenuBarHorizontal a.MenuBarItemHover`, `ul.MenuBarHorizontal a.MenuBarItemSubmenuHover`, `ul.MenuBarHorizontal a.MenuBarSubmenuVisible` CSS Style, we will change the hover over color.

Under the Background Category, we made the background color blue to match the blue in the banner (`#01A1FF`).



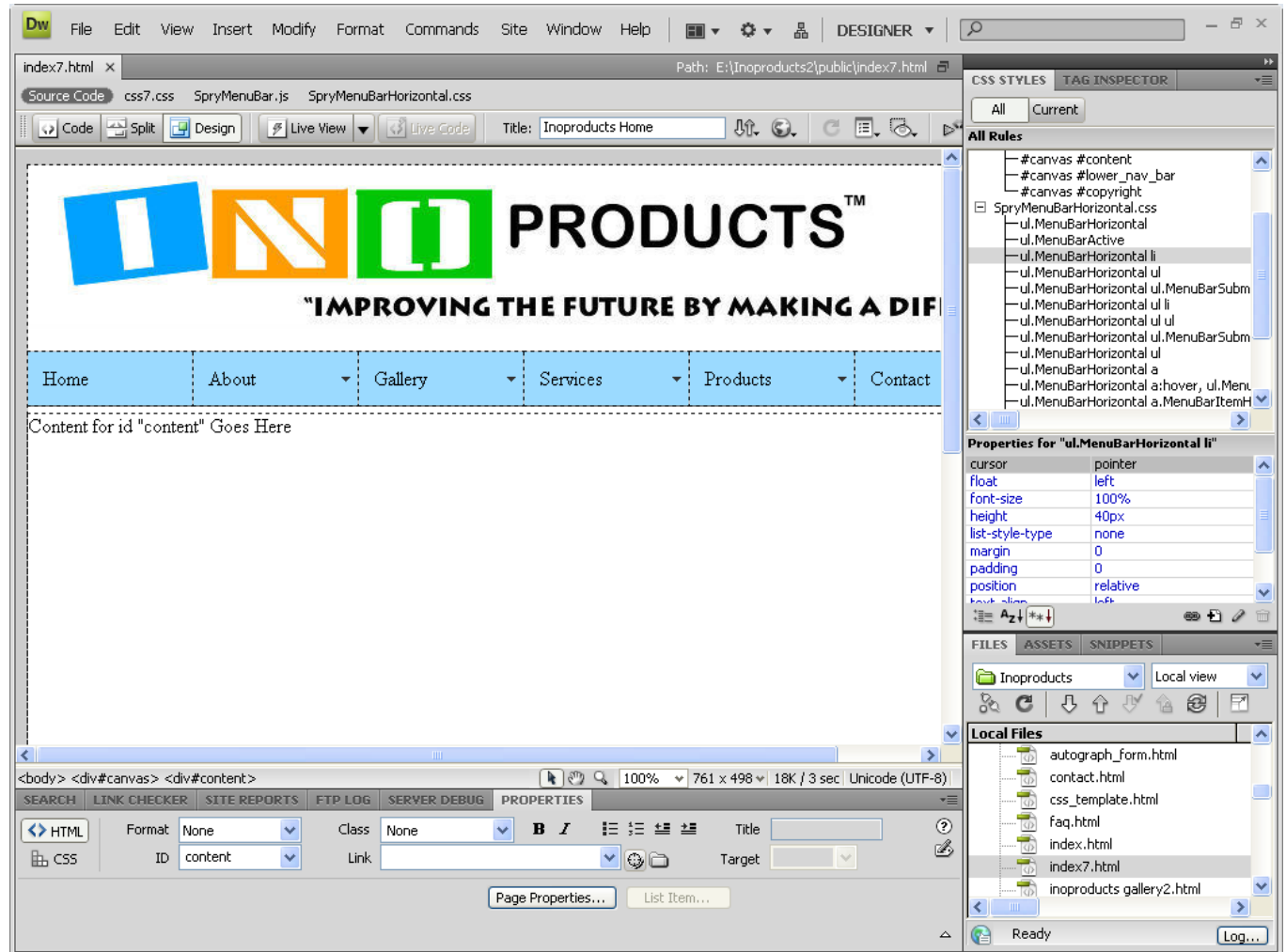
Define the Hyperlink Button Color

We select the Spry CSS a (hyperlink) definition as shown in the CSS Styles window Under the Background Category, we made the background color light blue (#9BDAFF). Every button that has a linked page will be this color.



Title the Home Page

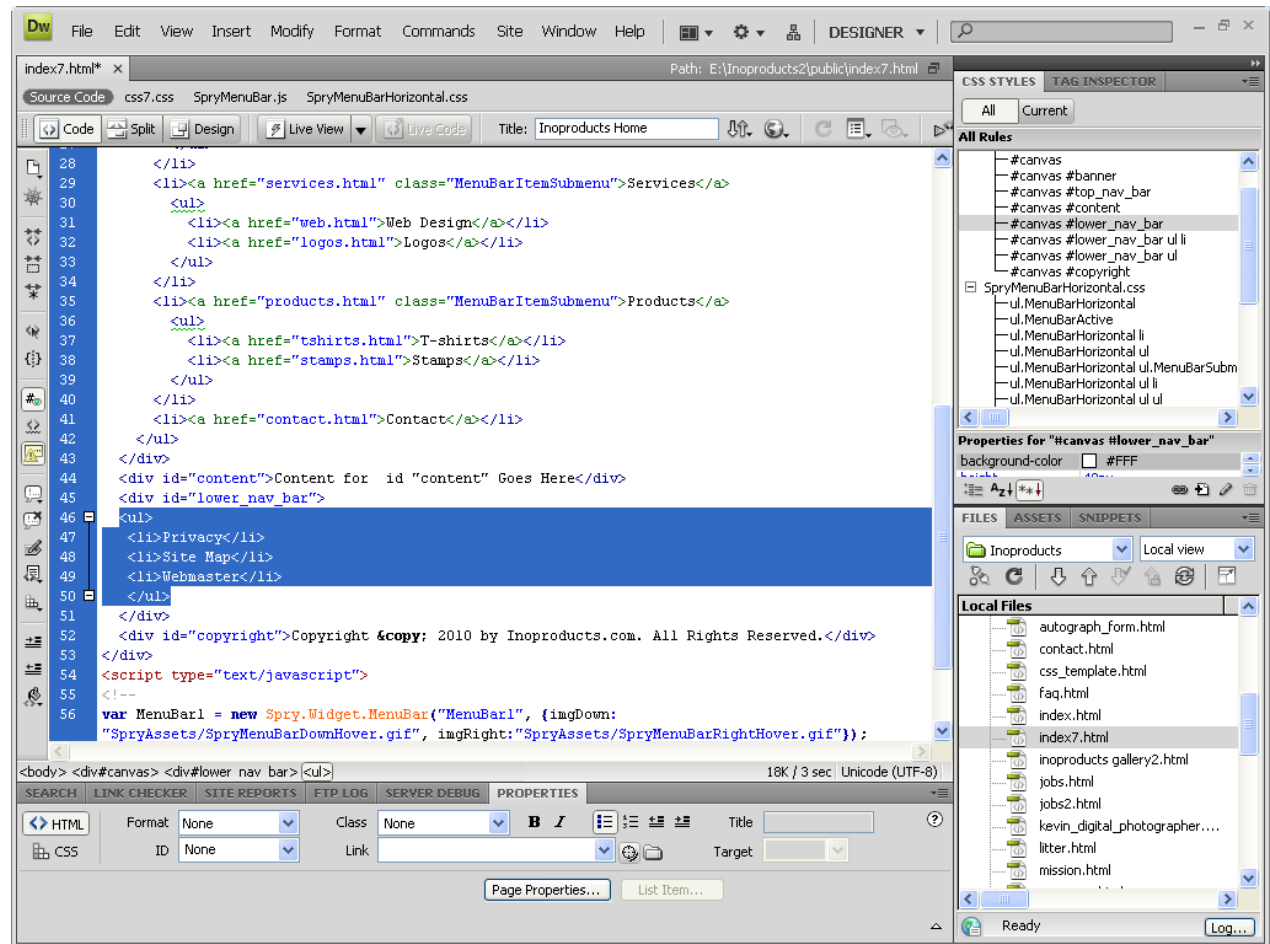
In the Title textbox, we type Inoproducts Home. This is shown on the web page's document title when we view the document with a web browser.



Insert an Unordered List for Links

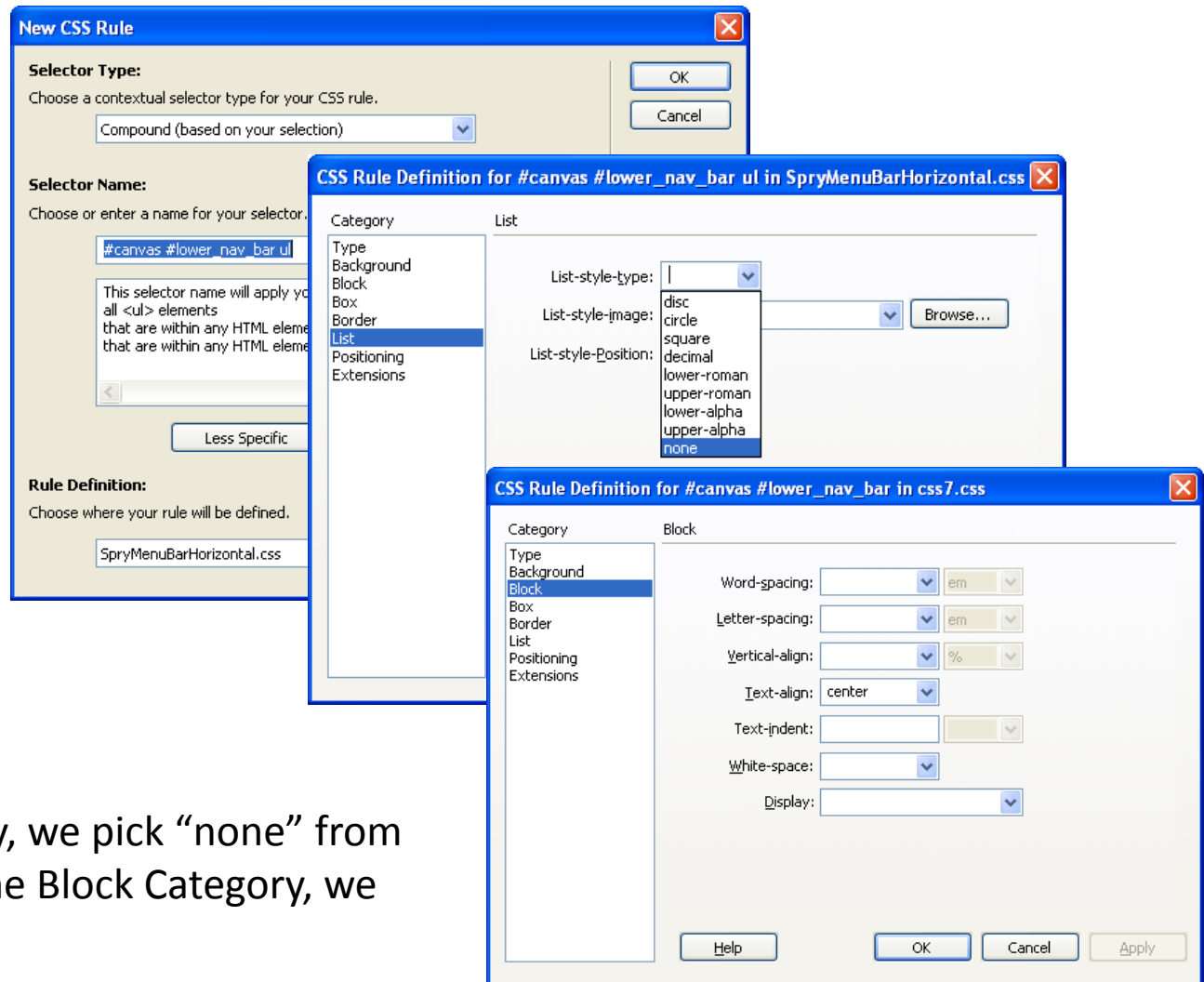
Finally, we will define the hyperlinks in the lower navigation bar. In the lower navigation bar division insert the following HTML Code.

```
<ul>  
  <li>Privacy</li>  
  <li>Site Map</li>  
  <li>Webmaster</li>  
</ul>
```



Remove the Disc and Center the Text

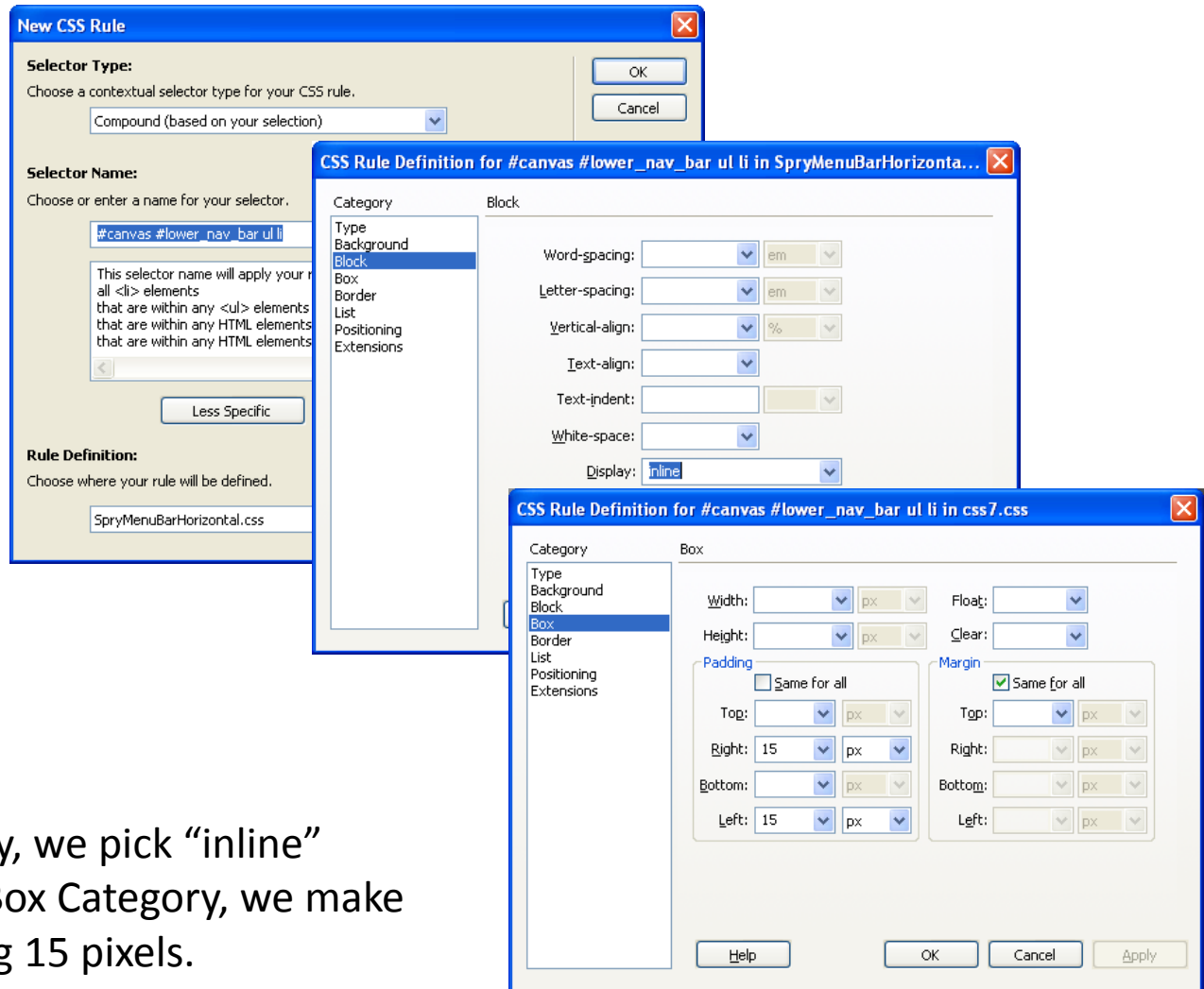
Next, we highlight the ul on the Dreamweaver status bar and we select the plus sign at the bottom of the CSS Styles window and the New CSS Rule window will appear. We do not need to change any settings, so we press the OK button.



Under the List Category, we pick “none” from the List style type. In the Block Category, we select text align center.

Define the List

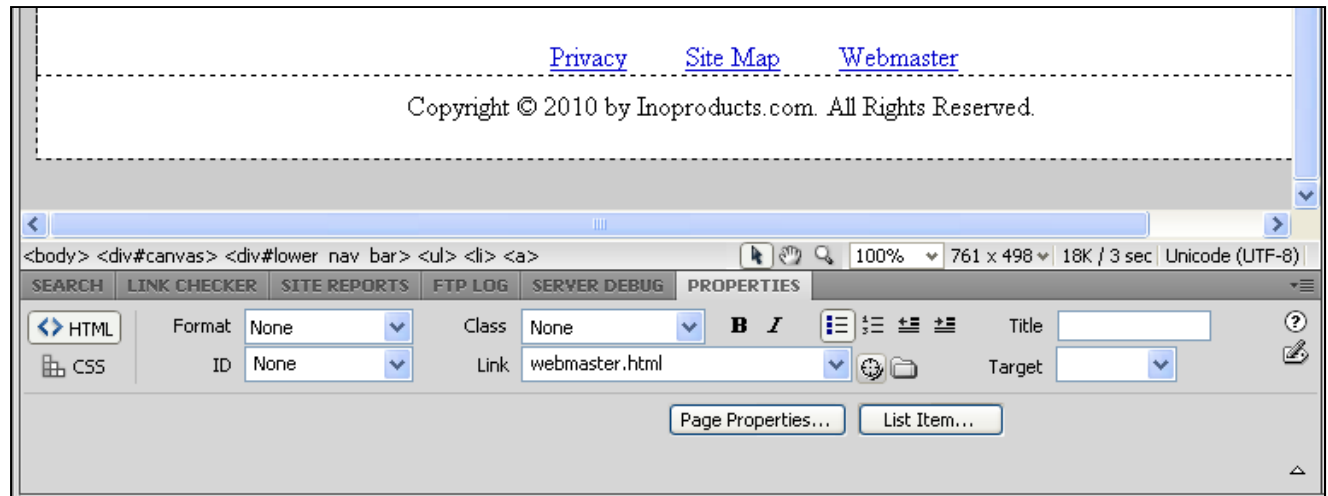
Next, we highlight the li on the Dreamweaver status bar and we select the plus sign at the bottom of the CSS Styles window and the New CSS Rule window will appear. We do not need to change any settings, so we press the OK button.



Under the Block Category, we pick “inline” from the display. In the Box Category, we make the right and left padding 15 pixels.

Define the Lower Links

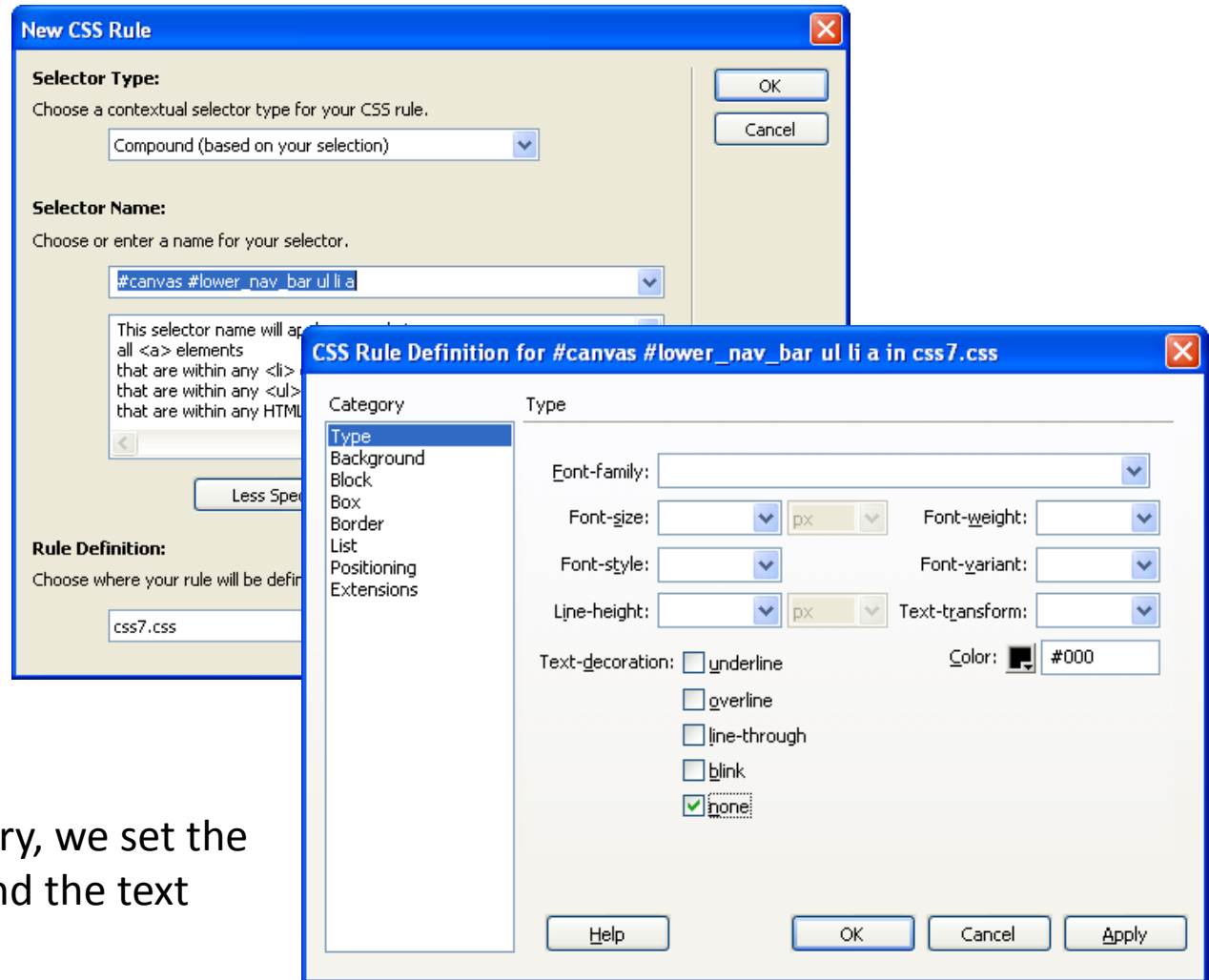
Now, we type the name of the hyperlink file into the link textbox. In the figure, we see the file name `webmaster.html` typed.



Set the Hyperlink Color

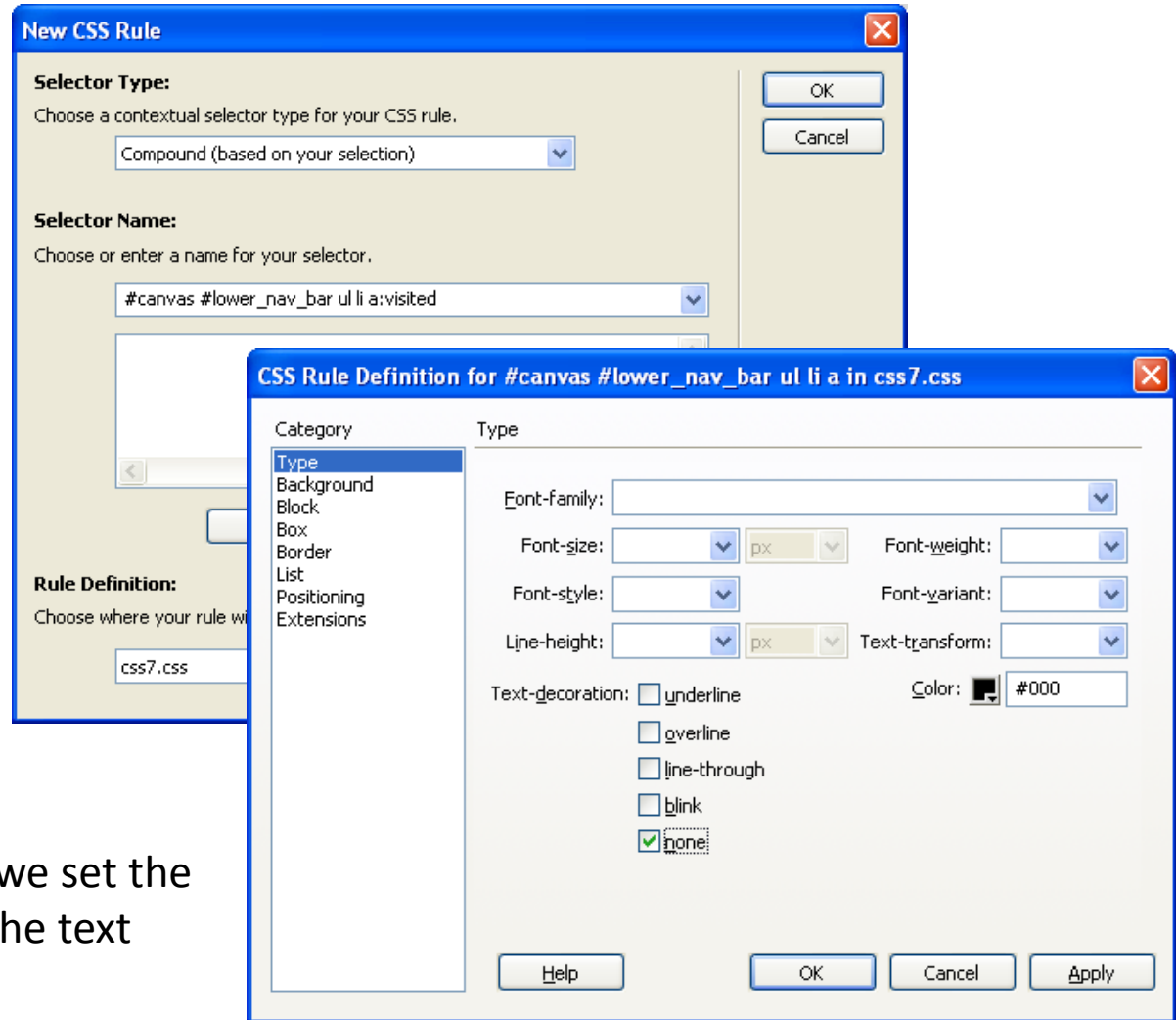
Next, we select one of the hyperlinks on the lower navigation bar and we select the plus sign at the bottom of the CSS Styles window and the New CSS Rule window will appear. We do not need to change any settings, so we press the OK button.

Under the Type Category, we set the color to black (#000) and the text decoration to none.



Set the Hyperlink Visited Color

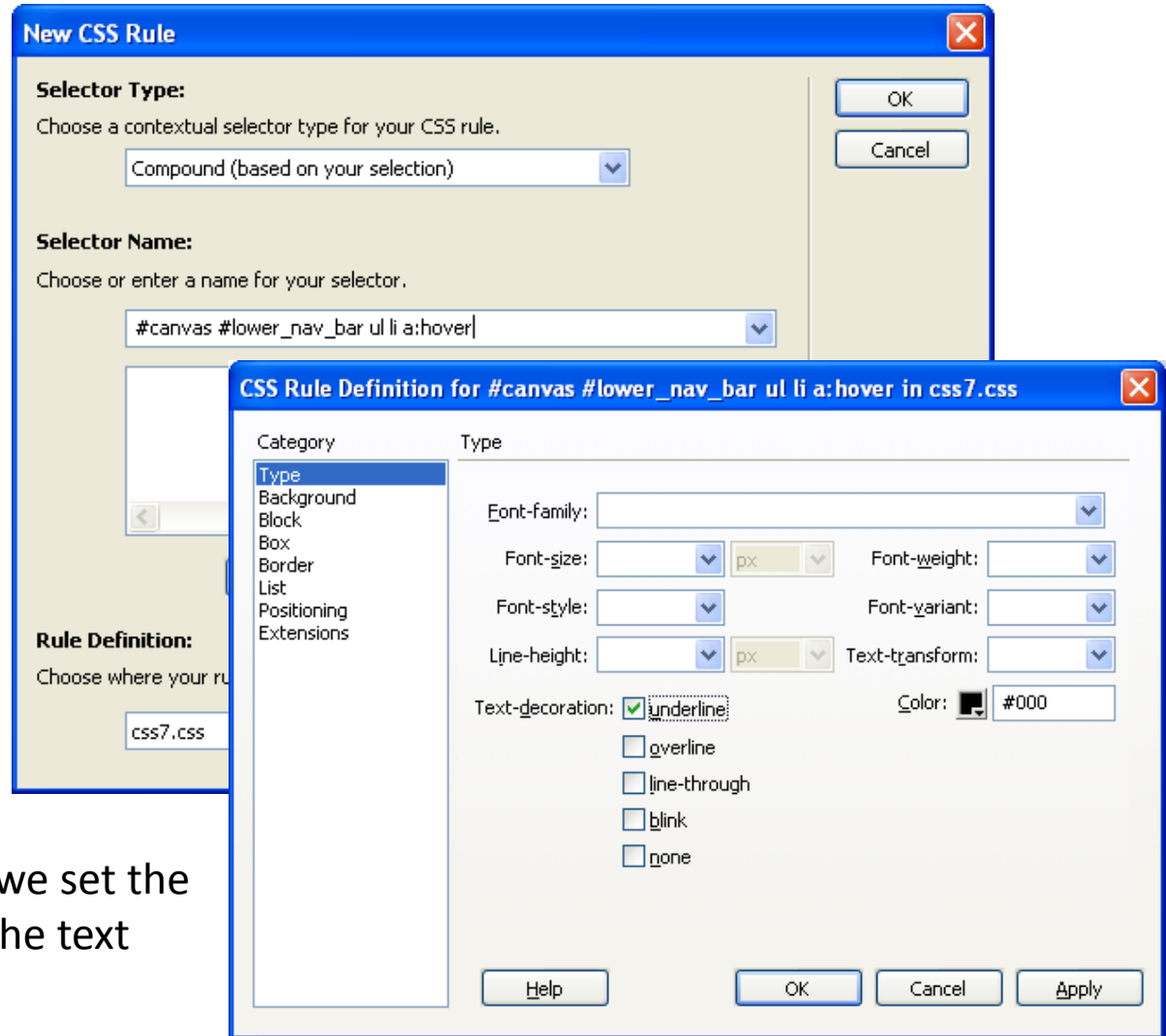
Next, we select one of the hyperlinks on the lower navigation bar and we select the plus sign at the bottom of the CSS Styles window and the New CSS Rule window will appear. Type “:visited” after the a in the selector name as shown in the figure.



Under the Type Category, we set the color to black (#000) and the text decoration to none.

Set the Hyperlink Hover Color

Next, we select one of the hyperlinks on the lower navigation bar and we select the plus sign at the bottom of the CSS Styles window and the New CSS Rule window will appear. Type “:hover” after the a in the selector name as shown in the figure.



Under the Type Category, we set the color to black (#000) and the text decoration to underline.

Defining an Editable Region

We can save the page as is or we can convert it to a template. To protect the hyperlinks, we can set the content division as an Editable Region. We select Insert on the Menu bar and then pick Template Objects and finally we choose Editable Region. The program automatically converts the document to a template. Then pick Save As Template and we named it "template2"

