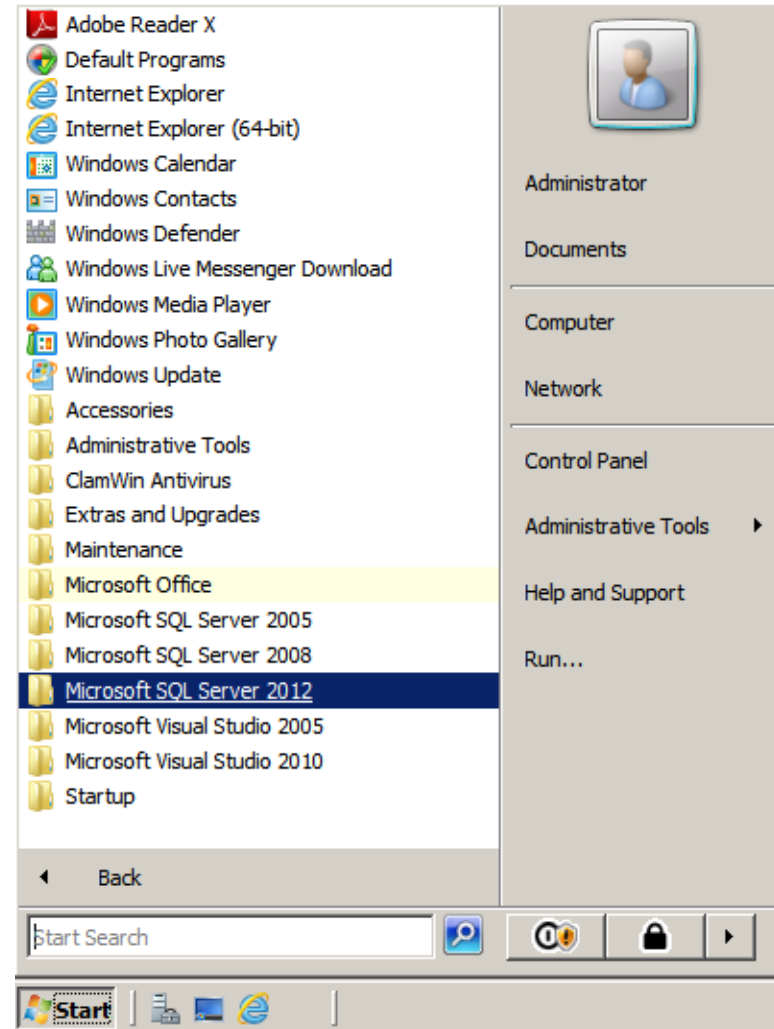


Building a SQL Database

August 16, 2012

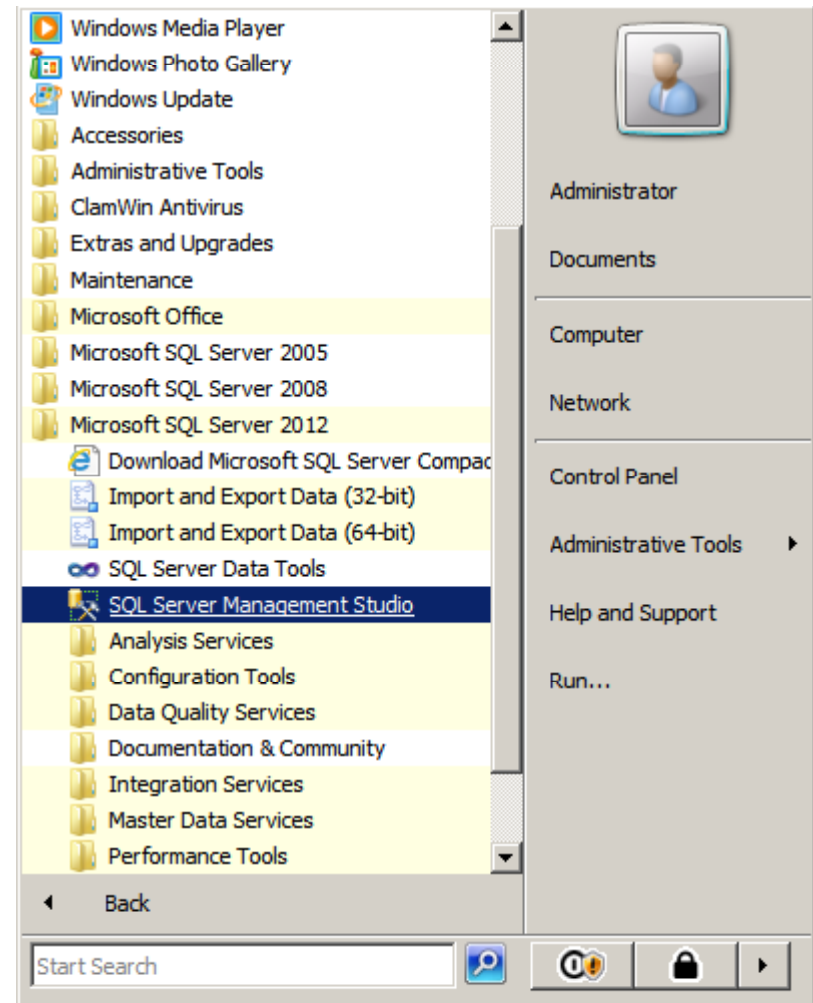
Launch Microsoft SQL Server 2012

On our SQL Server, we have the 2005, 2008 and 2012 version. We select the Microsoft SQL Server 2012.



SQL Server Management Studio

We expand the Microsoft SQL Server 2012 folder and we click the SQL Server Management Studio to open the program.



Connect to Server

We make sure our server name is correct and we choose the Connect button.



The screenshot shows the 'Connect to Server' dialog box for Microsoft SQL Server 2012. The dialog is titled 'Connect to Server' and features the Microsoft SQL Server 2012 logo. The fields are as follows:

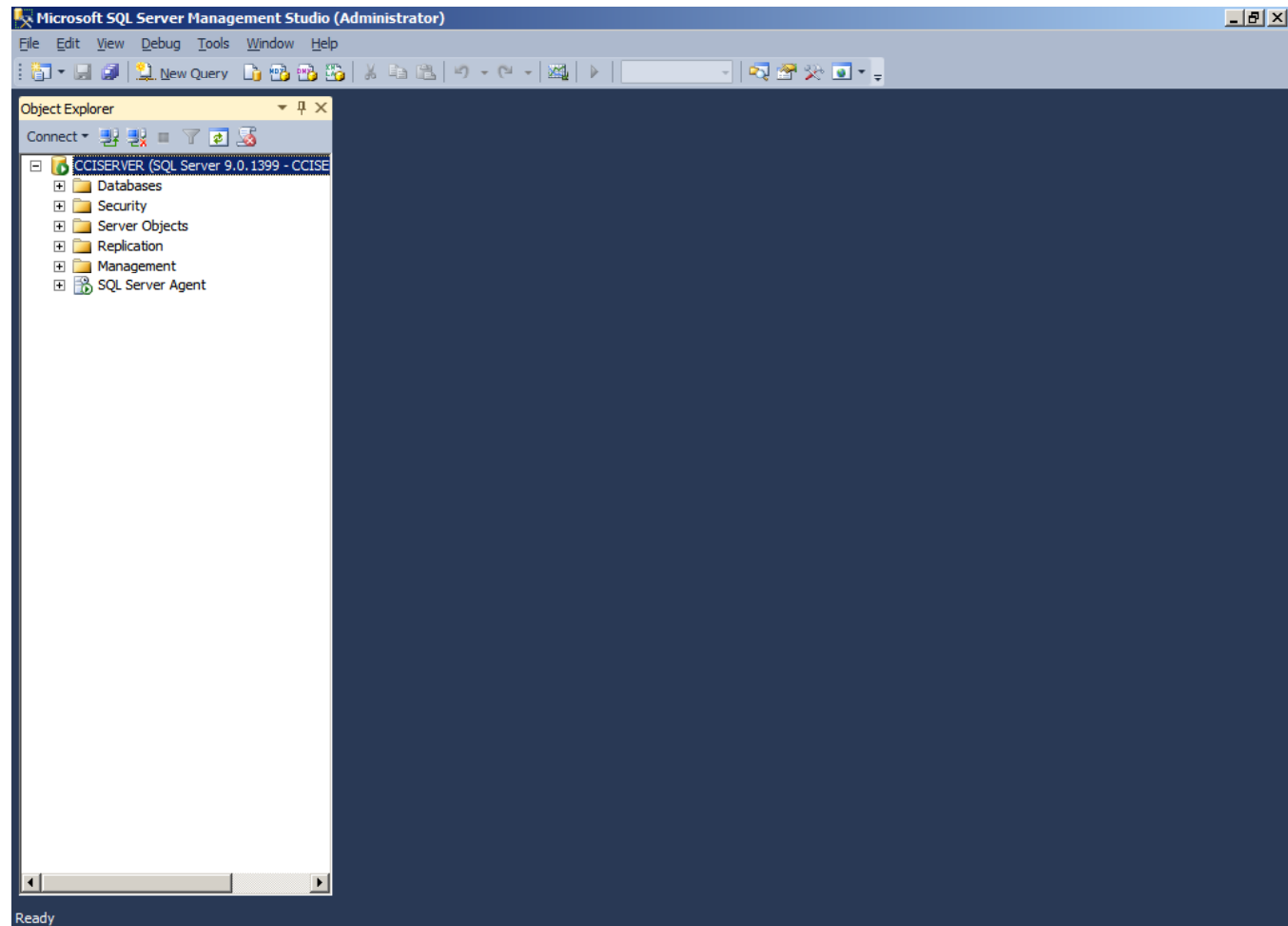
- Server type: Database Engine
- Server name: CCISERVER
- Authentication: Windows Authentication
- User name: CCISERVER\Administrator
- Password: (empty)
- Remember password

At the bottom, there are four buttons: 'Connect', 'Cancel', 'Help', and 'Options >>'. The 'Connect' button is highlighted with a blue border.

SQL Server Management Studio

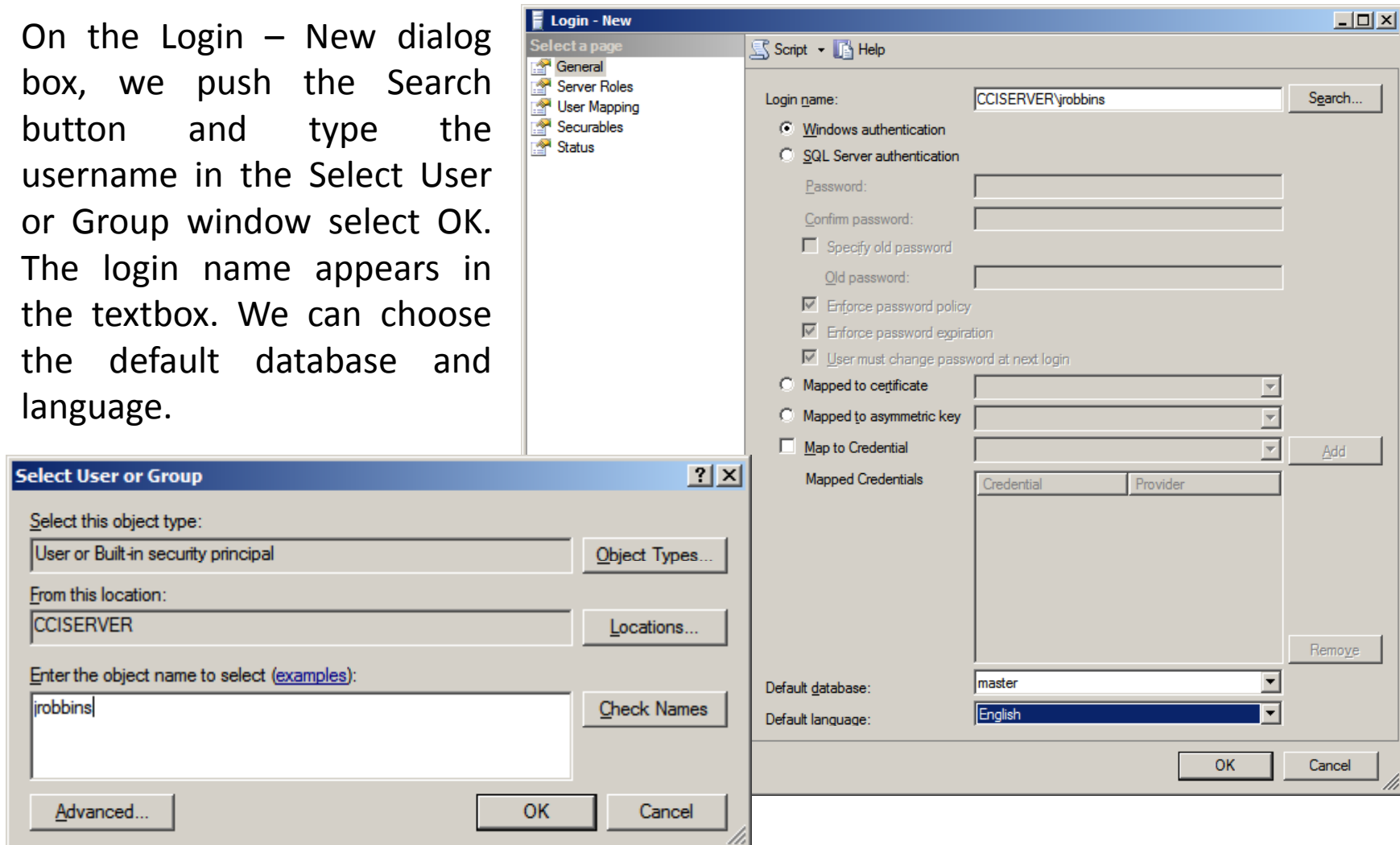
The SQL Server Management Studio window will open.

Expand the Security folder and right click on the Login folder. Select New login from the menu.



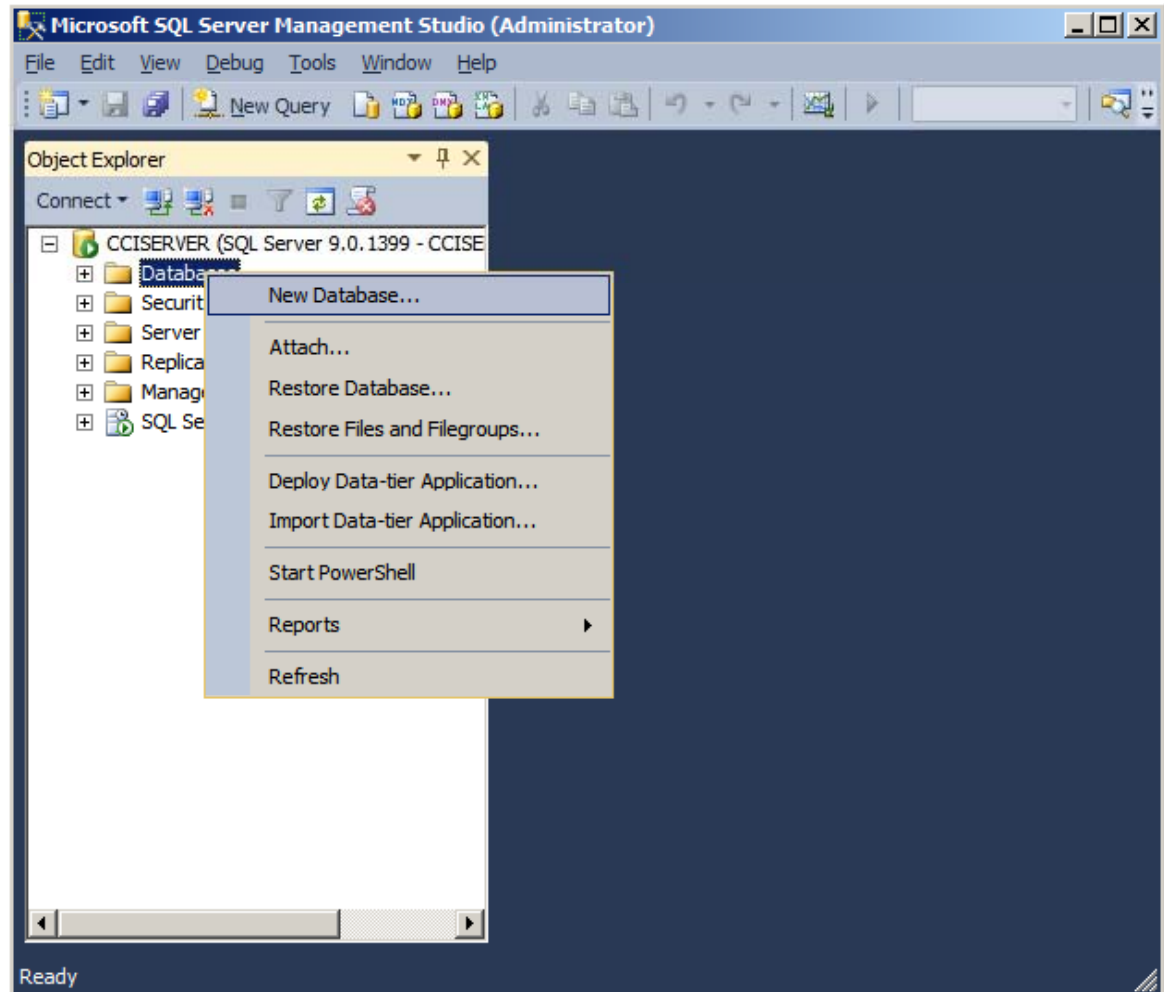
Login – New Window

On the Login – New dialog box, we push the Search button and type the username in the Select User or Group window select OK. The login name appears in the textbox. We can choose the default database and language.



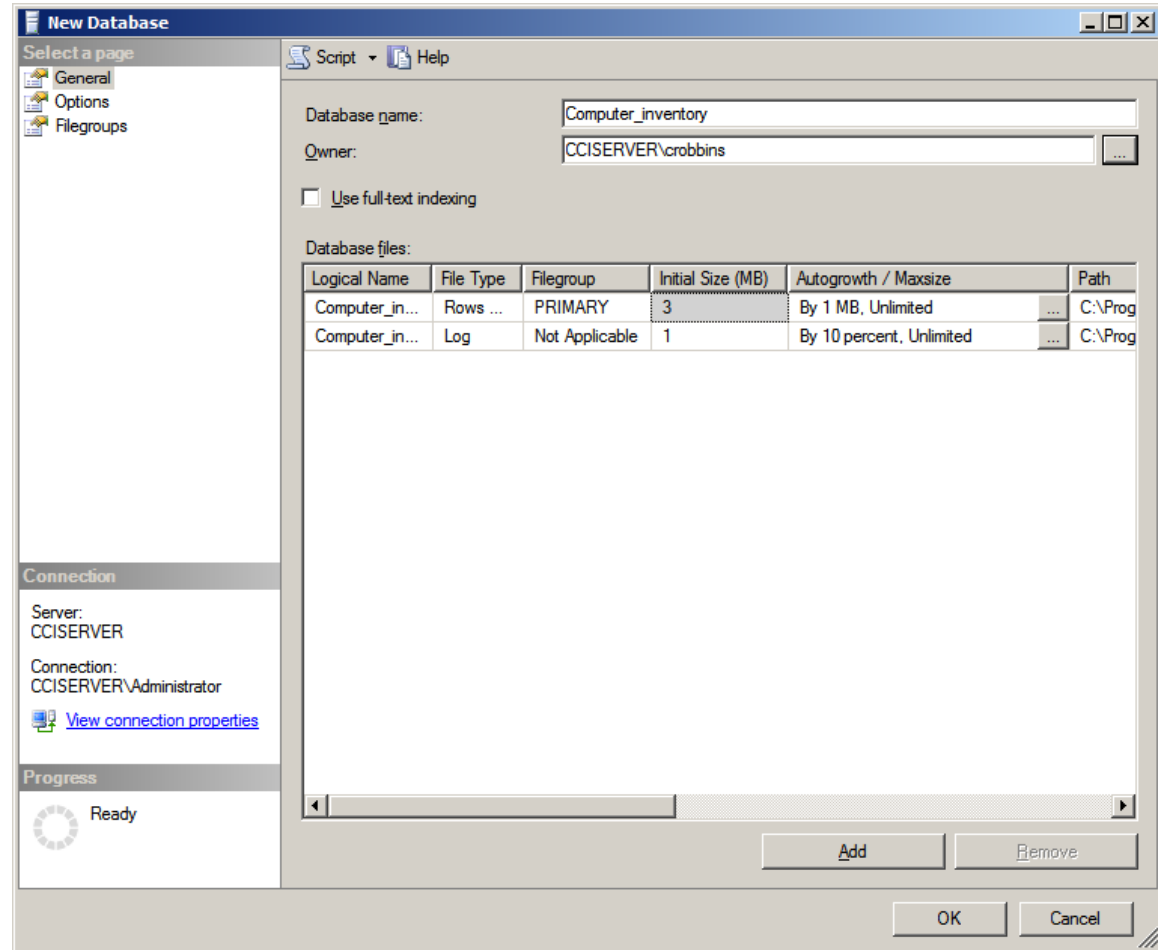
Create a New Database

To create a new database, we right click on Database in the left pane and we select New Database from the menu.



New Database Window

We type the name of the database and we assign the owner. We will use our username.



Log Maximum File Size

On the Inventory log, we click on the three dotted icon as shown and change the Maximum File Size to 100 MB.

The screenshot displays two overlapping dialog boxes in SQL Server Enterprise Manager. The background dialog is 'New Database', and the foreground dialog is 'Change Autogrowth for Inventory_log'.

New Database Dialog:

- Database name: Computer_inventory
- Owner: CCISERVER\crobbins
- Use full-text indexing:
- Database files table:

Logical Name	File Type	Filegroup	Initial Size (MB)	Autogrowth / Maxsize	Path
Computer_in...	Rows ...	PRIMARY	3	By 1 MB, Unlimited	C:\Prog
Computer_in...	Log	Not Applicable	1	By 10 percent, Unlimited	C:\Prog

The three dotted icon in the Path column for the Log file is circled in red.

Change Autogrowth for Inventory_log Dialog:

- Enable Autogrowth
- File Growth:
 - In Percent: 10
 - In Megabytes: 10
- Maximum File Size:
 - Limited to (MB): 100
 - Unlimited

Buttons: OK, Cancel

Computer Inventory Database

In our next lesson, we will create the tables for our food ordering database.

