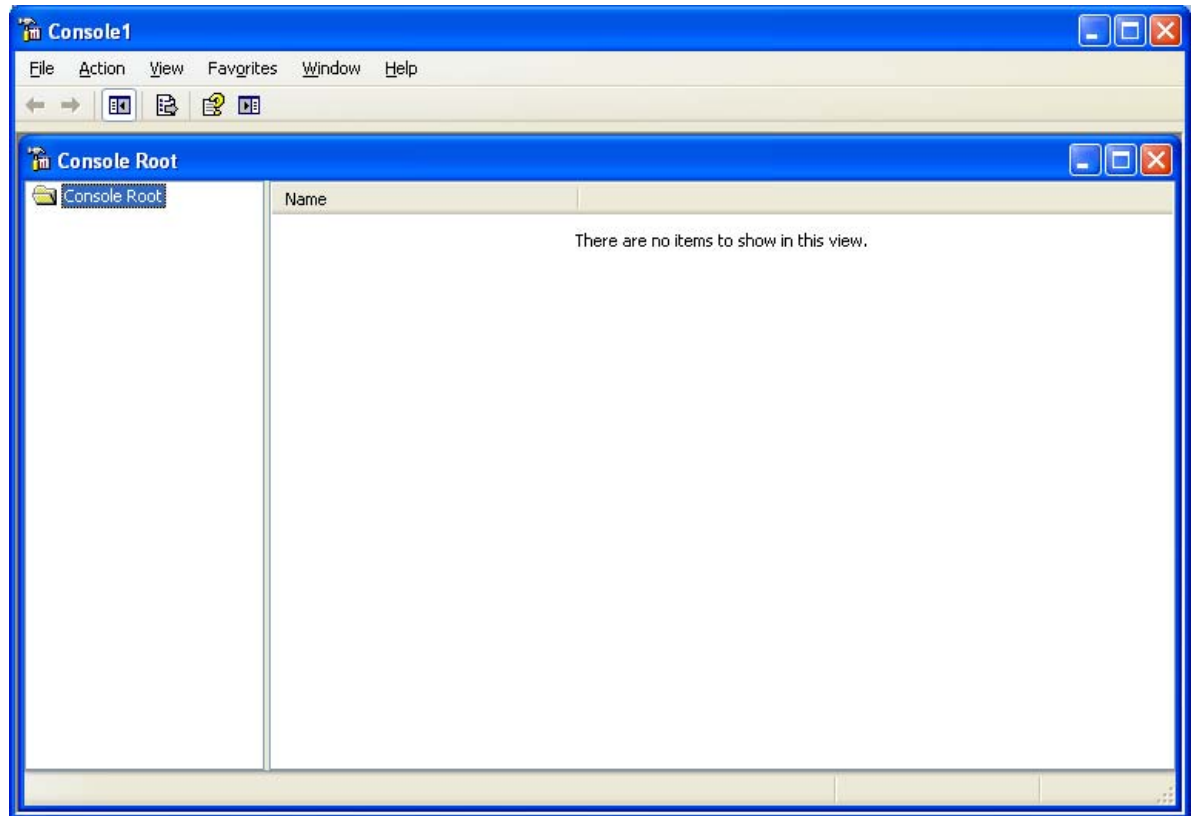


Using Remote Desktop from a Windows Server

July 25, 2010

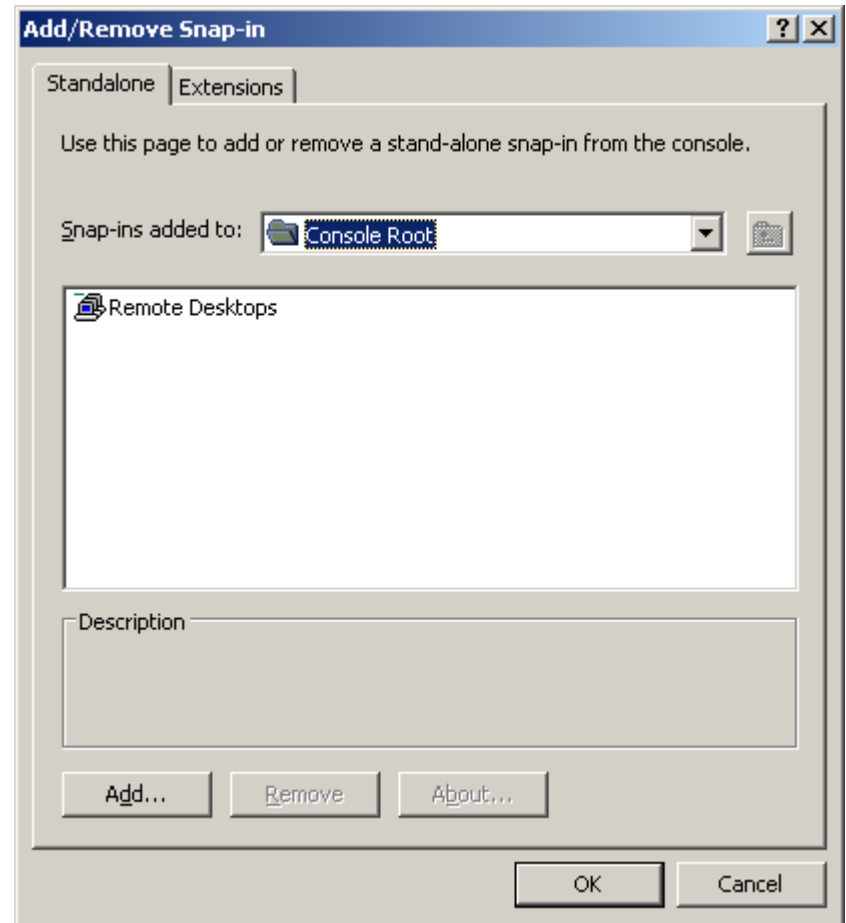
Open Microsoft Management Console

To open a new Microsoft Management Console, we select Start and then Run and type MMC in the textbox. When we press the OK button a new console window will open on the desktop.



Add Remote Desktops Snap-in

We then pick File on the Console1 Menu bar and select Add / Remove Snap-in. When the Add Remove Snap-in dialogue box appears, we choose the Add button. A list of tools will appear and we will pick Remote Desktops.



Add New Connection

We right click on the Remote Desktops and select Add New Connection. The Add New Connection window will appear. We can type either the IP address or computer name in the top textbox. The connection name is entered by the computer.

We enter our administrator's username, password and domain name. We can check the save password checkbox to remember our logon information.

The screenshot shows the 'Add New Connection' dialog box. The 'Connection' section contains the following fields and options:

- Server name or IP address: 192.168.20.31 (with a 'Browse...' button)
- Connection name: 192.168.20.31
- Connect to console

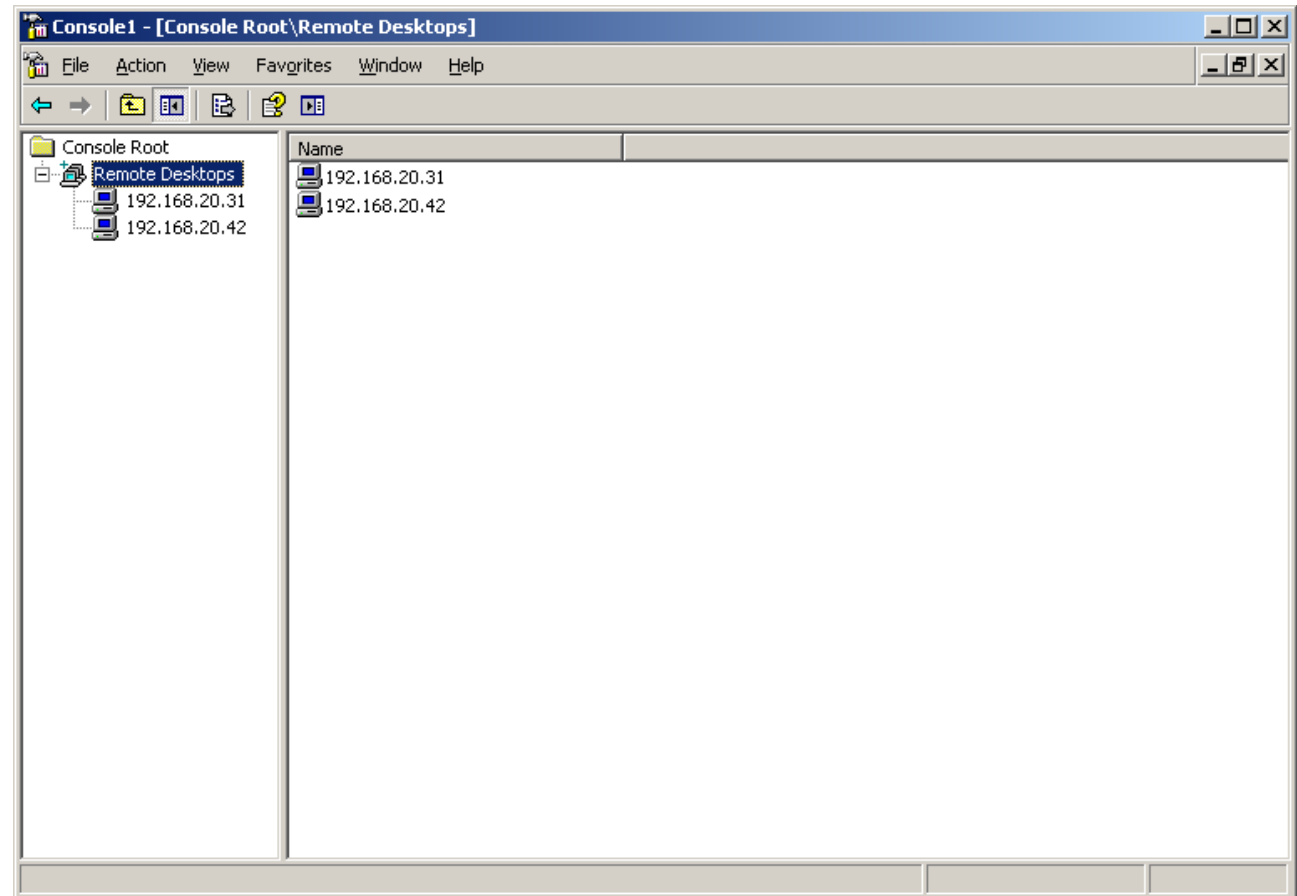
The 'Logon information' section contains the following fields and options:

- User name: Administrator
- Password: [Masked]
- Domain: Domain
- Save password

Buttons at the bottom: OK, Cancel

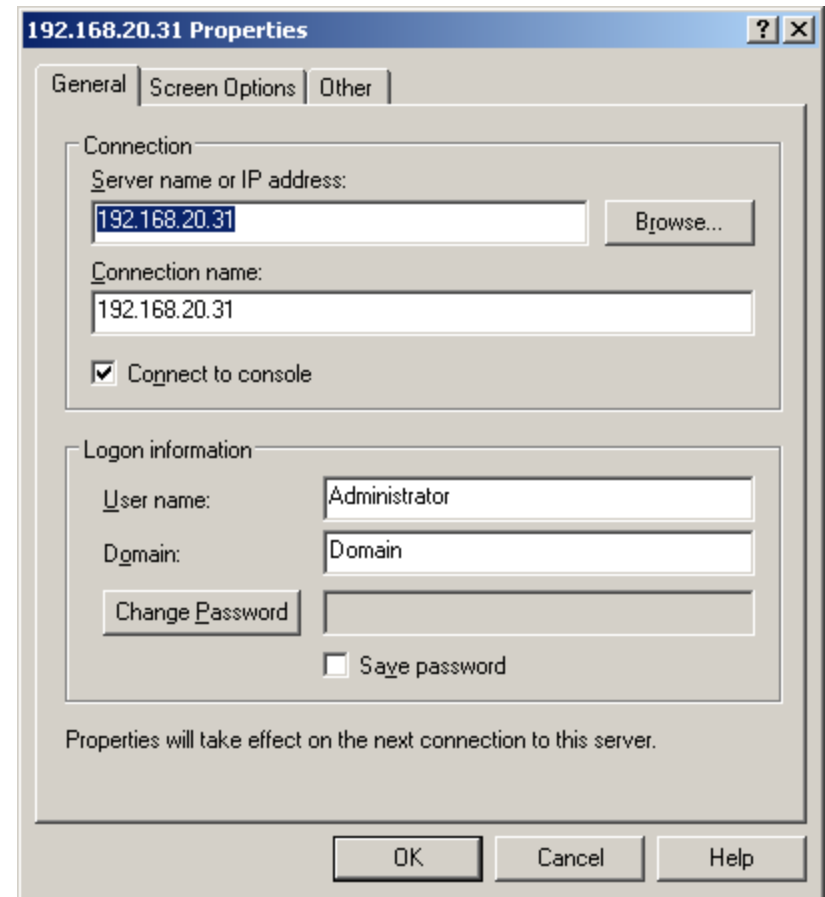
Microsoft Management Console

We can see the two connections we added, one for a client computer and one for a secondary server.



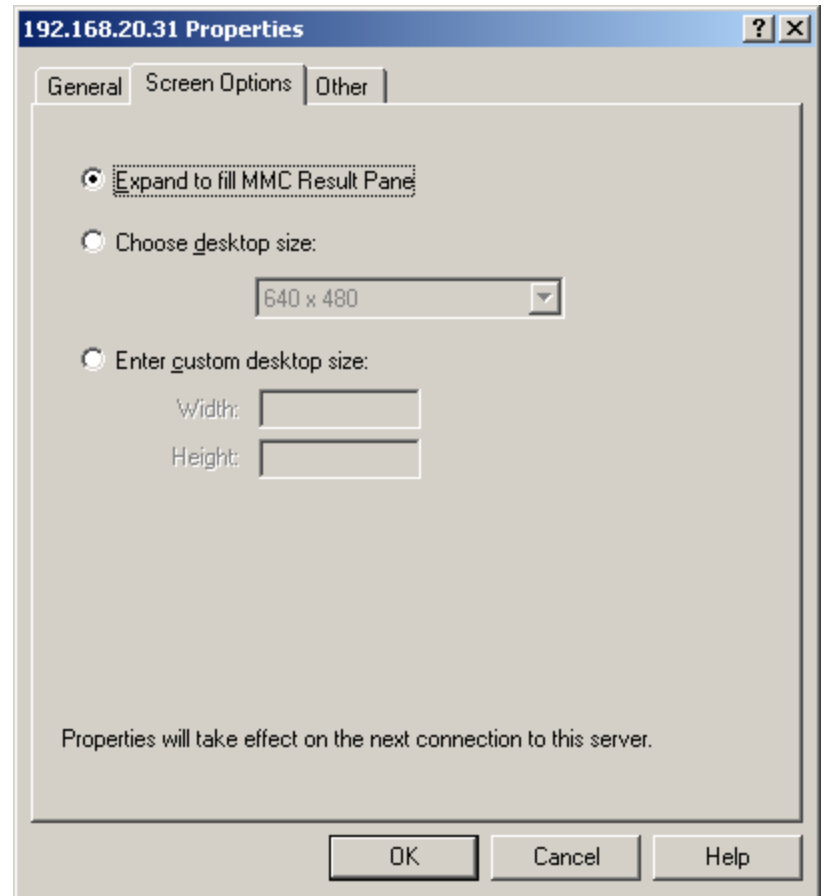
Remote Desktop Properties

If we right click on the 192.168.20.31 IP address, we can access the properties window. The first tab is the General information.



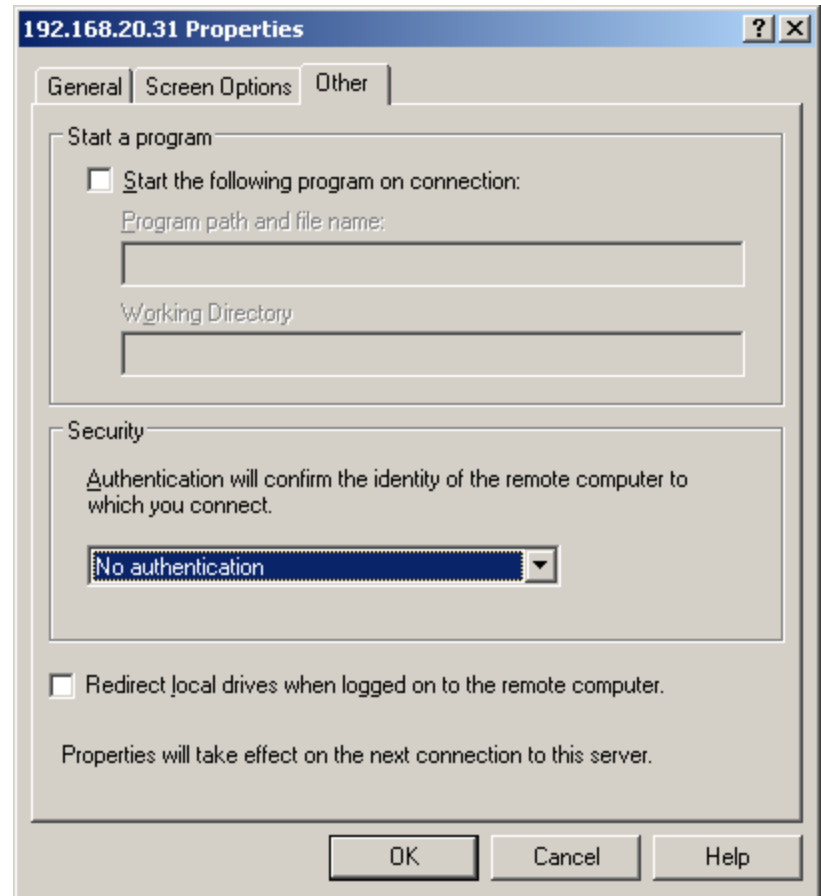
Screen Options

The second tab is Screen Options where we can expand the remote desktop to the size of the MMC left pane or opt to choose a desktop size such as 640 x 480.



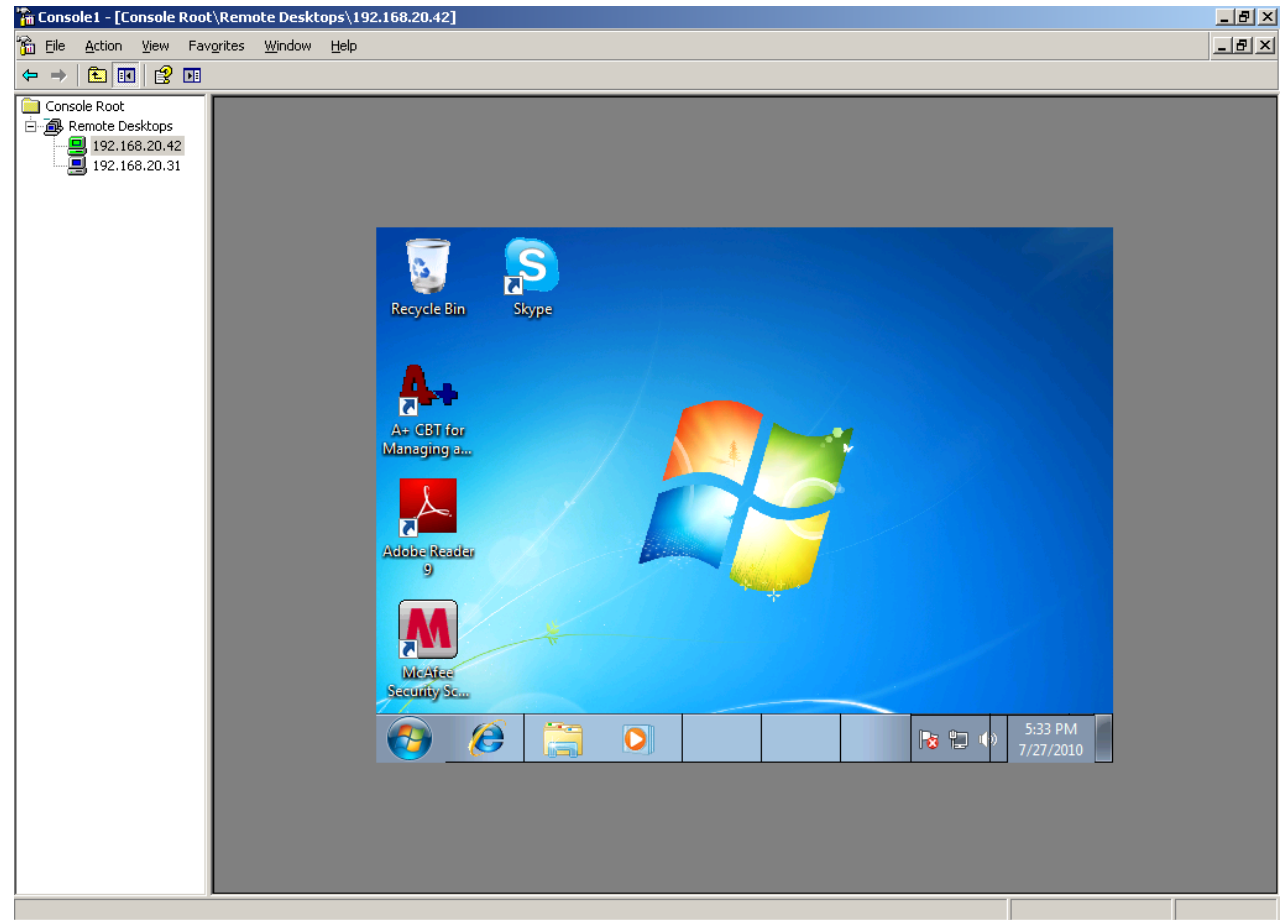
Security

The Other tab will let us start a program when we open the remote desktop and control security.



Making a Remote Connection

When we double click on the first IP address, the client desktop appears.



Connecting to a Server Remotely

When we double click on the server IP address, we do tasks such as check the SQL database.

We can save the MMC console for future use by selecting File on the Menu bar and Save.

