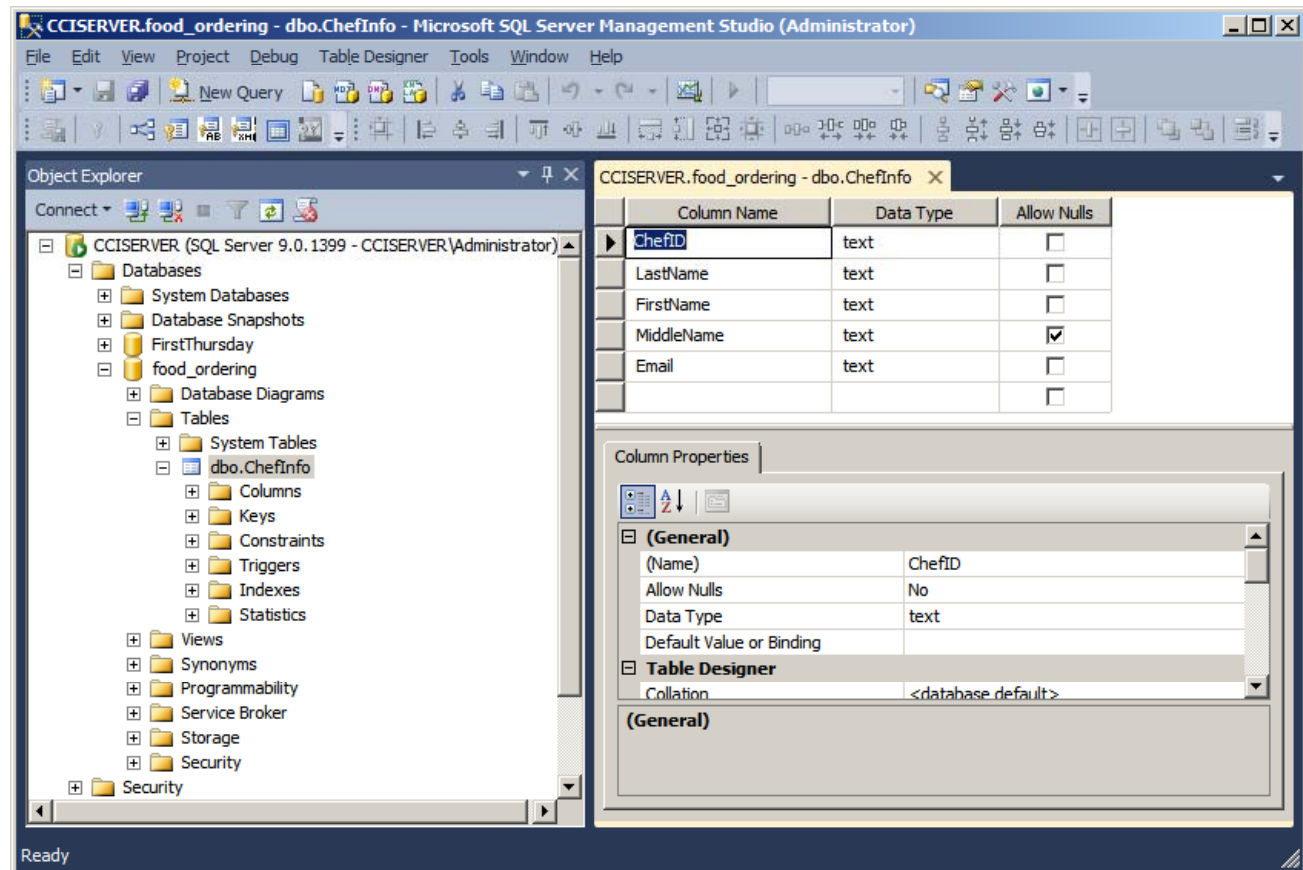


Input Records into a SQL Database

August 22, 2012

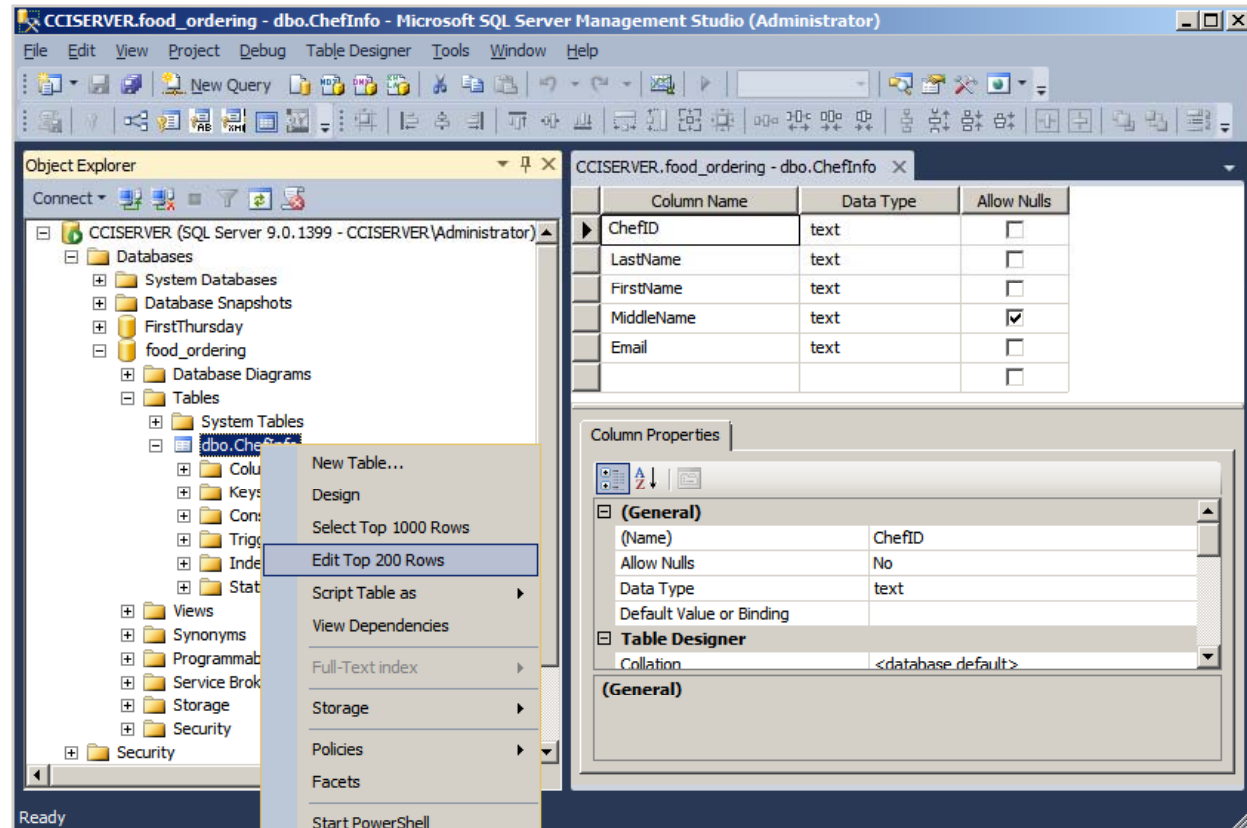
Select Table in the Database

Sometimes, we will want to add records to the table while we are in the SQL database on the server.



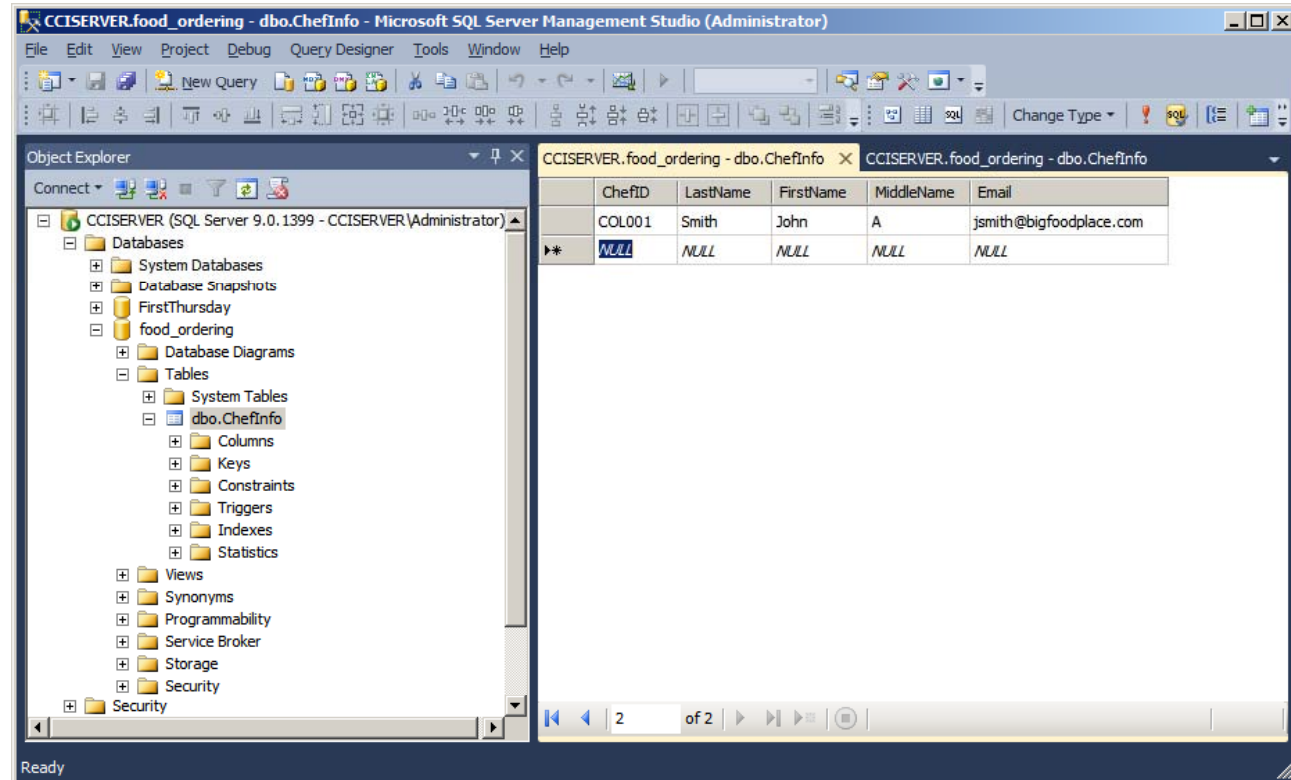
Edit Rows

We will expand the tables folder in the database and right click on the table. We choose edit top 200 rows.



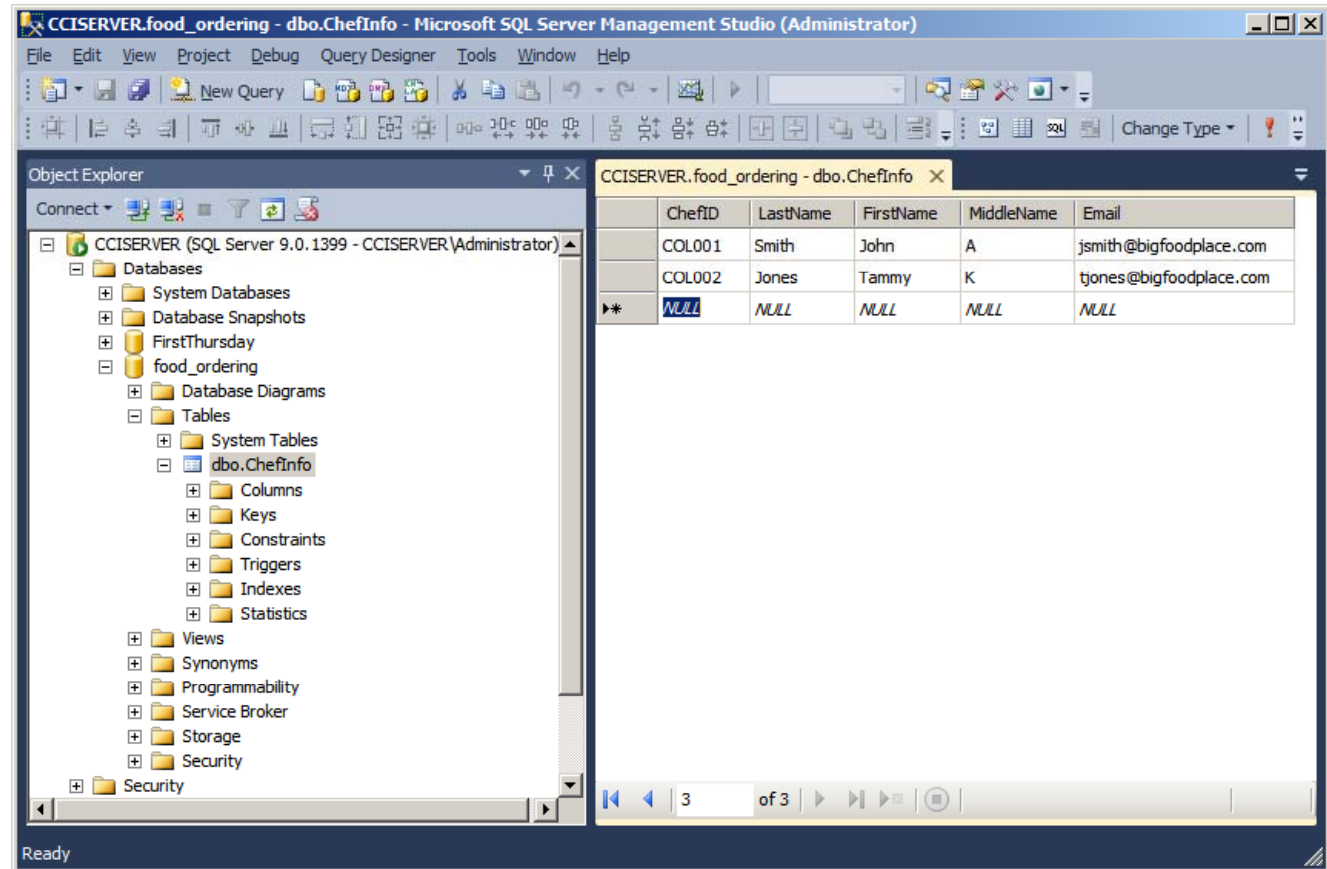
Input a New Record

We type the ChefID, last name, first name, middle initial and email address for the first record.



Input the Next Record

We type the ChefID, last name, first name, middle initial and email address for the second record.



Complete the Data Entry

We will input all of the chef's identification numbers, last names, first names, middle initials if they have one, and their email addresses. We will save the table.

