

# Joining a Domain with a Windows 7 Computer

June 9, 2010

# Joining a Domain

Domain controllers give the organization centralized jurisdiction over the members of the network. With Windows' Active Directory, we have managed access to files through secure pathways. We have administrators to supervise read and write permissions. We can better store the organization's intellectual property and financial data and redirect the files to connected offsite storage for protection from catastrophic damage to the local machines.

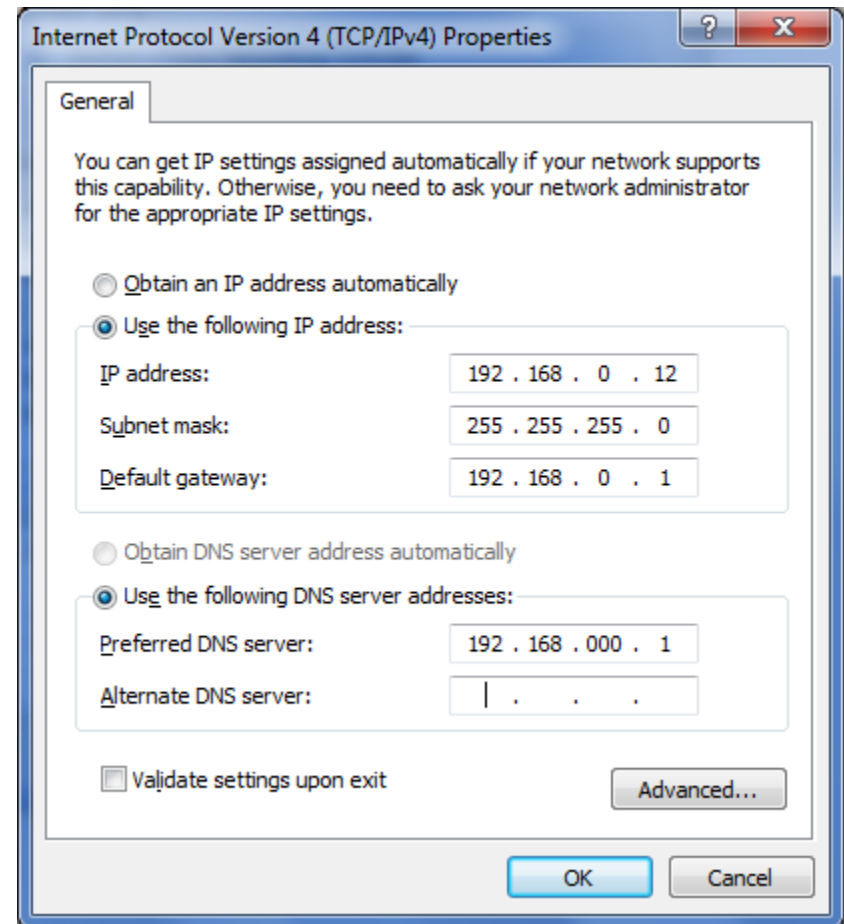
Now that we have a domain controller, we want to connect to the server.

## Active Directory Benefits

- Client – server network
- Kerberos security
- Administrator controlled
- Centralized storage
- Easy file transfers

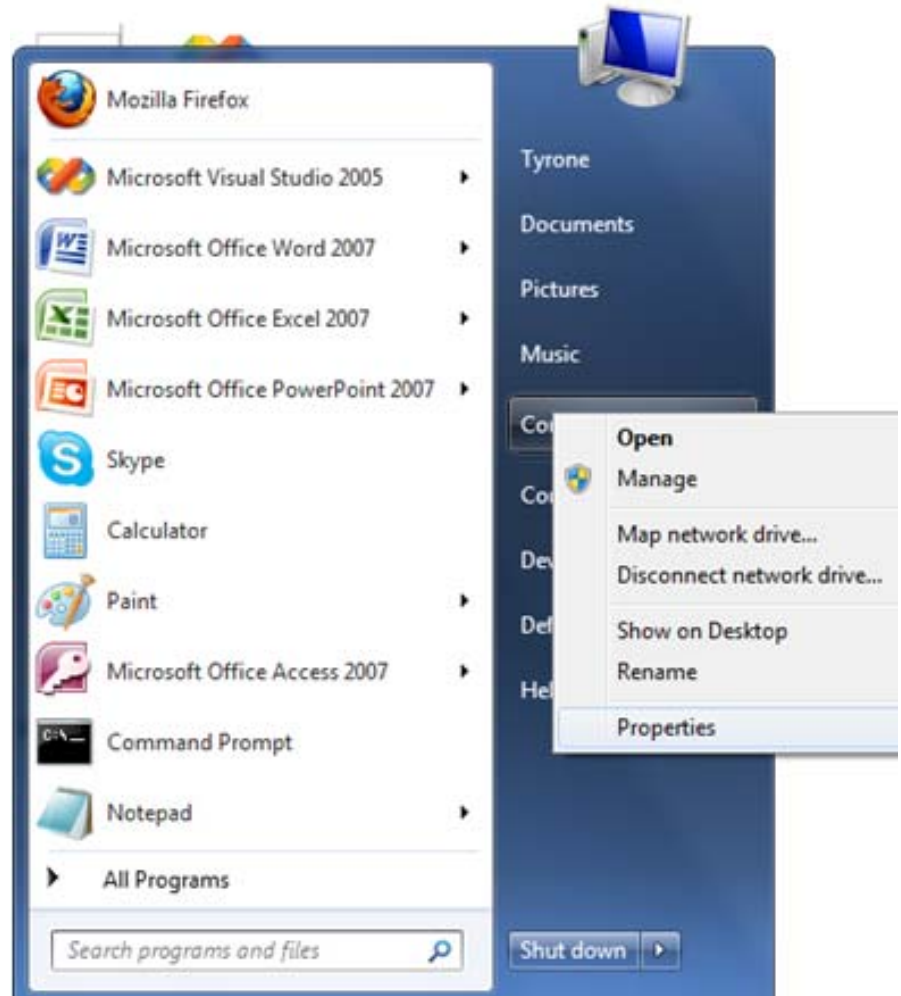
# Client Computer TCP/IP Properties

On the client computer, we need to check the Network Interface Card's (NIC) Internet Protocol (TCP/IP) properties. The server's Intranet NIC has an IP address of 192.168.0.1, so our gateway and DNS server IP address point to that number. The client IP address can be any figure from 192.168.0.2 to 192.168.0.254.



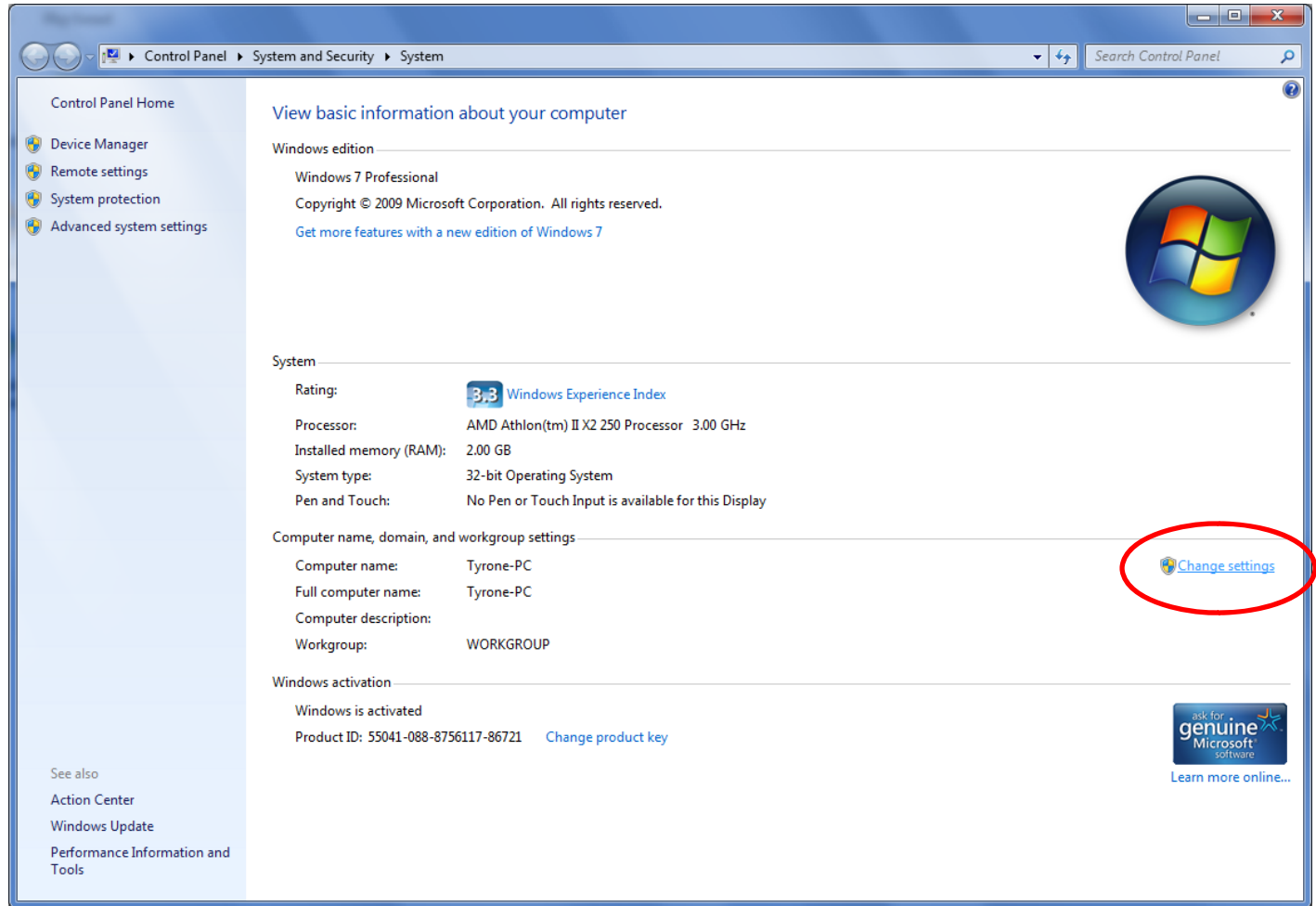
# The Start Menu

Now, we right click on the My Computer hyperlink on the Start menu and we select Properties.



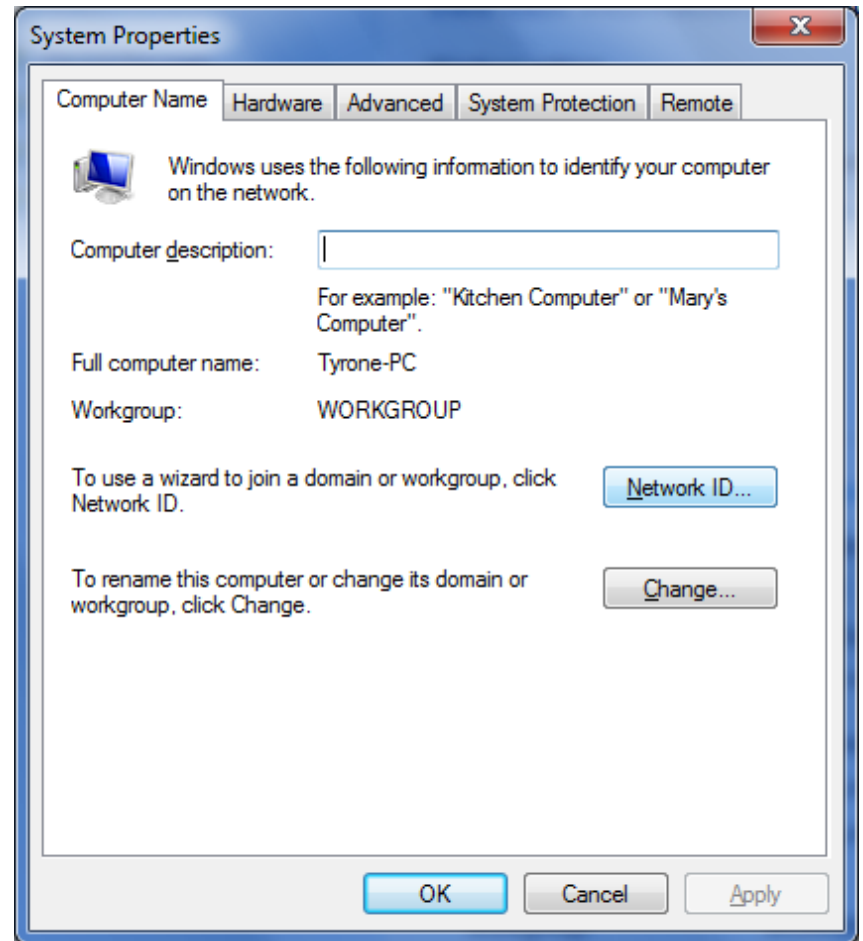
# The Properties Window

The System window will appear and we will choose the change settings hyperlink on the right side of the window.



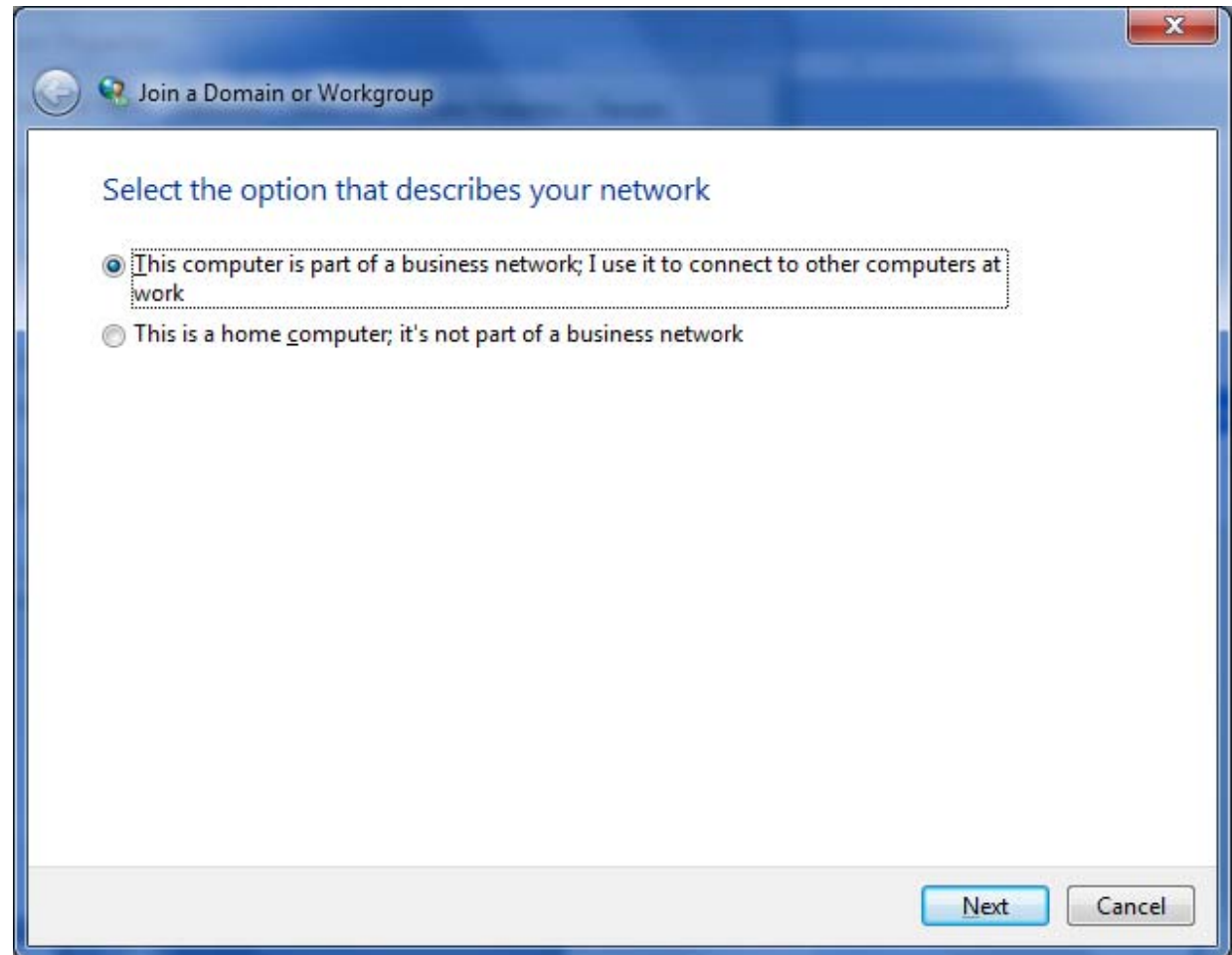
# The System Properties Window

In the System Properties dialogue box, we will press the Network ID to run the wizard.



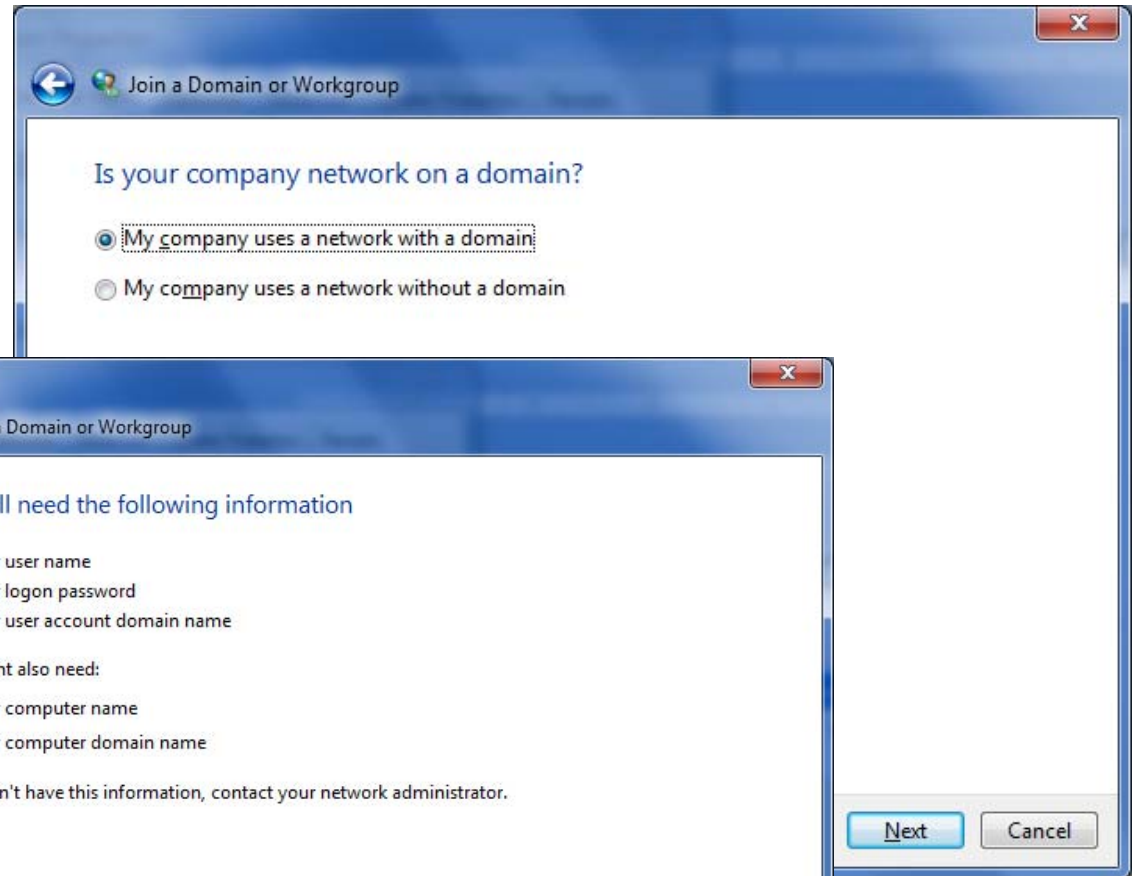
# Connecting to the Network

We have two options on this window, one to join a domain and the other to attach ourselves to a home group. We will pick to join a domain at work and we will select Next to continue.



# Network Information

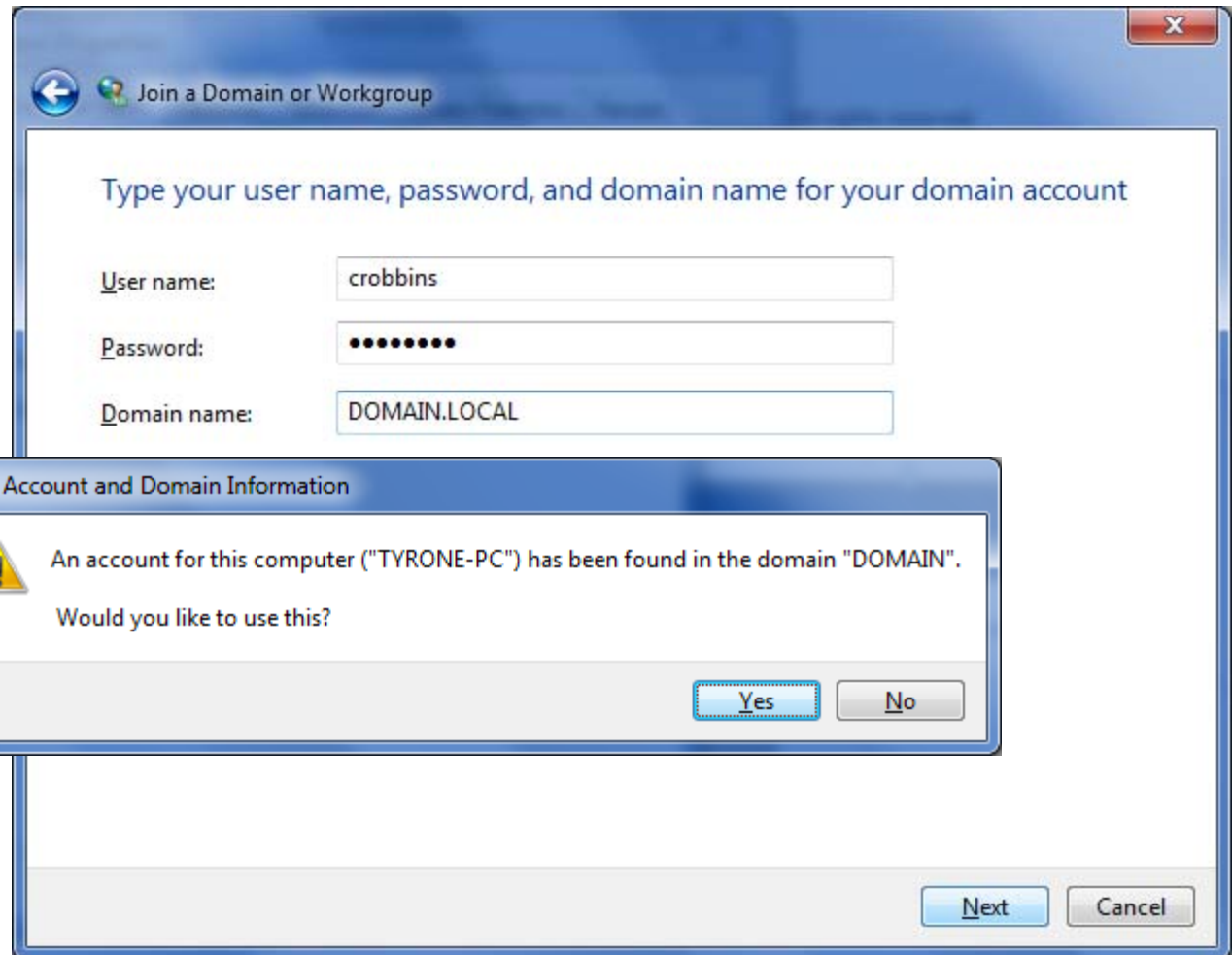
Now, we decide to use a network with a domain and when we press the Next button, we are asked to have a username, password and domain name ready. We opt for the Next button to proceed.





# User Account and Domain Information

The User Account and Domain Information dialogue box needs to contain a valid username, password, and domain name. We choose the Next button to advance.



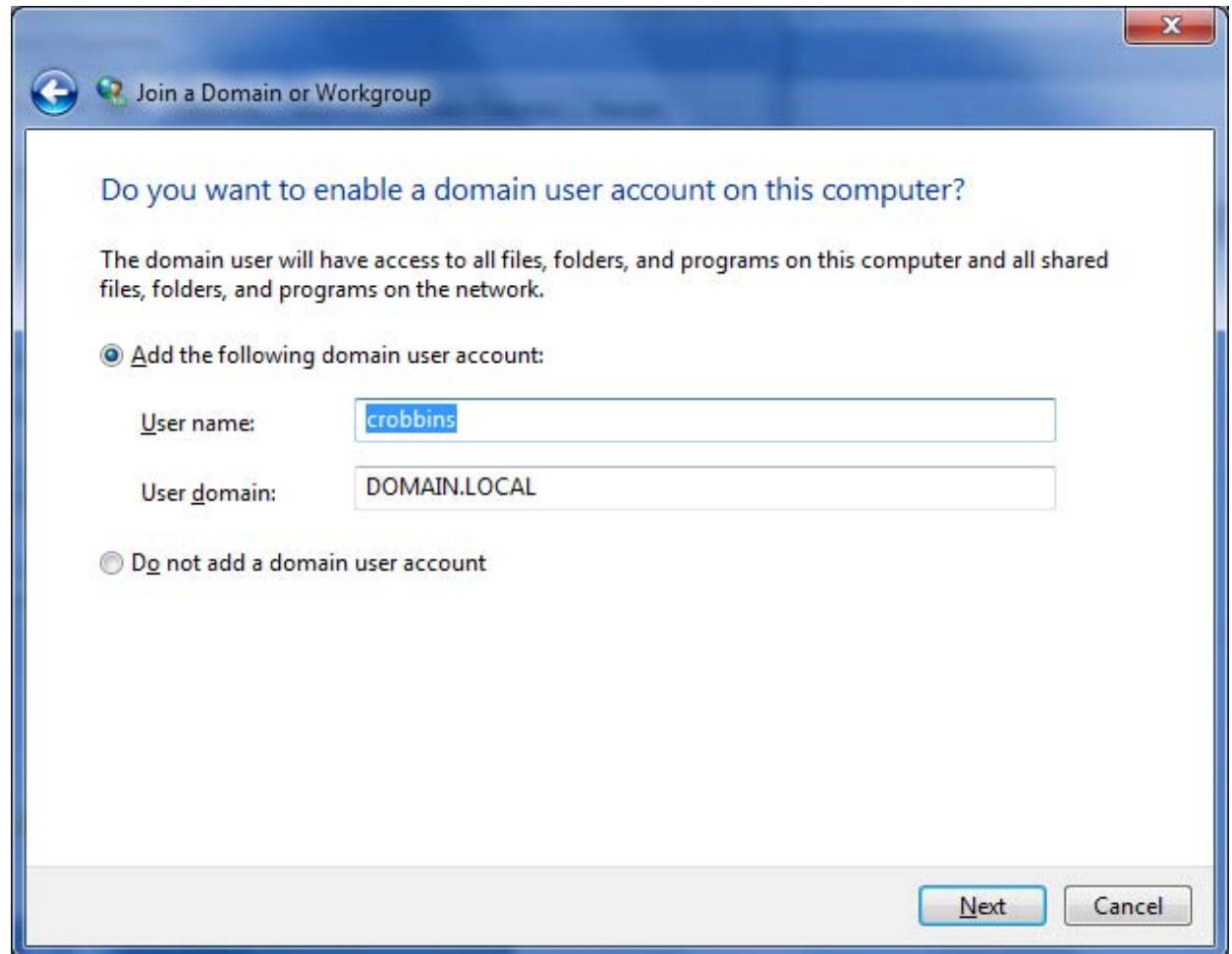
The image shows a Windows dialog box titled "Join a Domain or Workgroup". The main text inside the dialog reads: "Type your user name, password, and domain name for your domain account". There are three input fields: "User name:" with the text "crobbins", "Password:" with a masked password of ten dots, and "Domain name:" with the text "DOMAIN.LOCAL". At the bottom right of the dialog are "Next" and "Cancel" buttons.

Overlaid on top of the dialog is a smaller dialog box titled "User Account and Domain Information". It contains a yellow warning icon and the text: "An account for this computer ('TYRONE-PC') has been found in the domain 'DOMAIN'. Would you like to use this?". At the bottom right of this smaller dialog are "Yes" and "No" buttons.

Once the domain has been found, an alert message will appear for us to utilize the domain. We choose the Yes button.

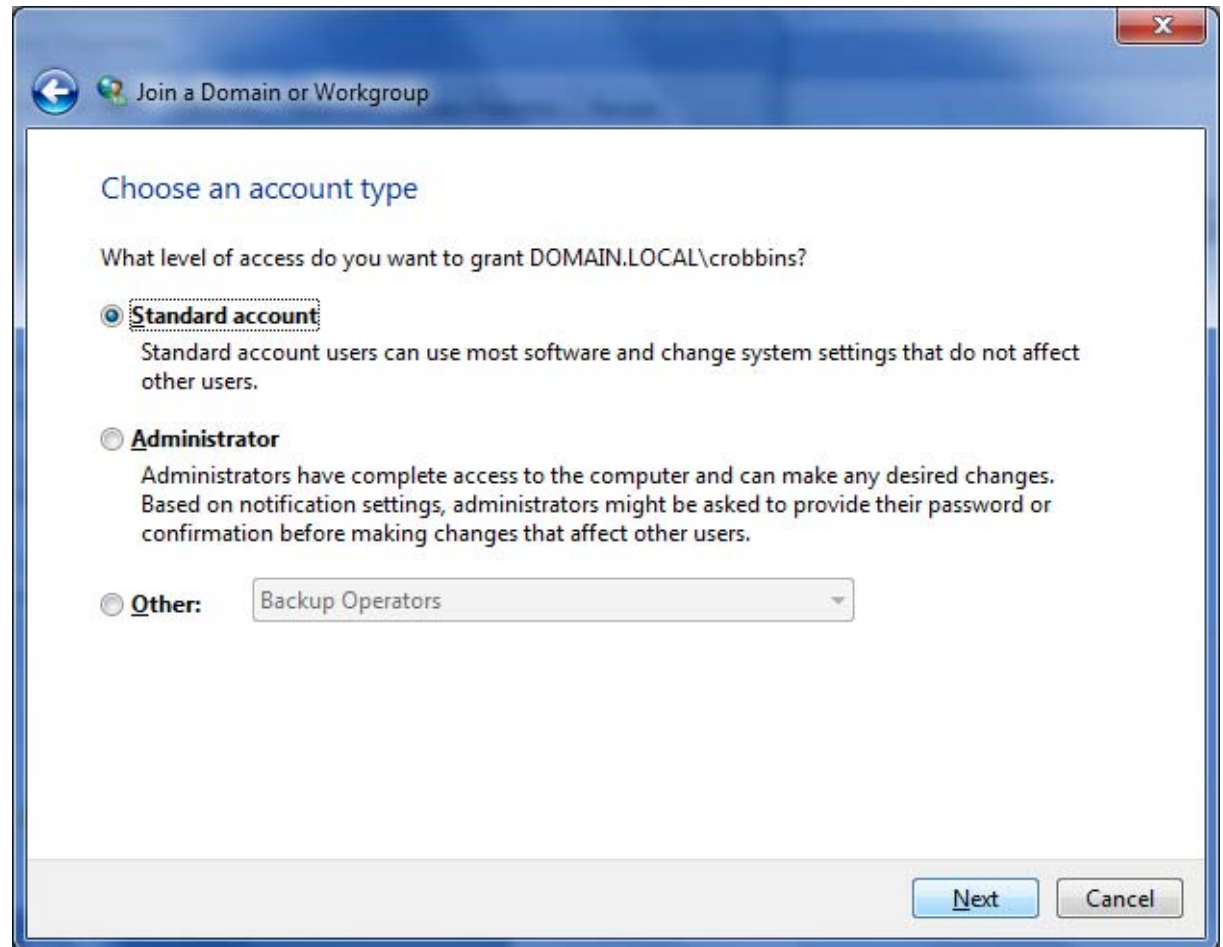
# User Account

We can add the crobbins User Account to this computer and press the Next button to proceed. This will give the user permissions to use software on this computer. Or, we can leave the crobbins account off this specific computer and restrict the user to just server controlled resources.



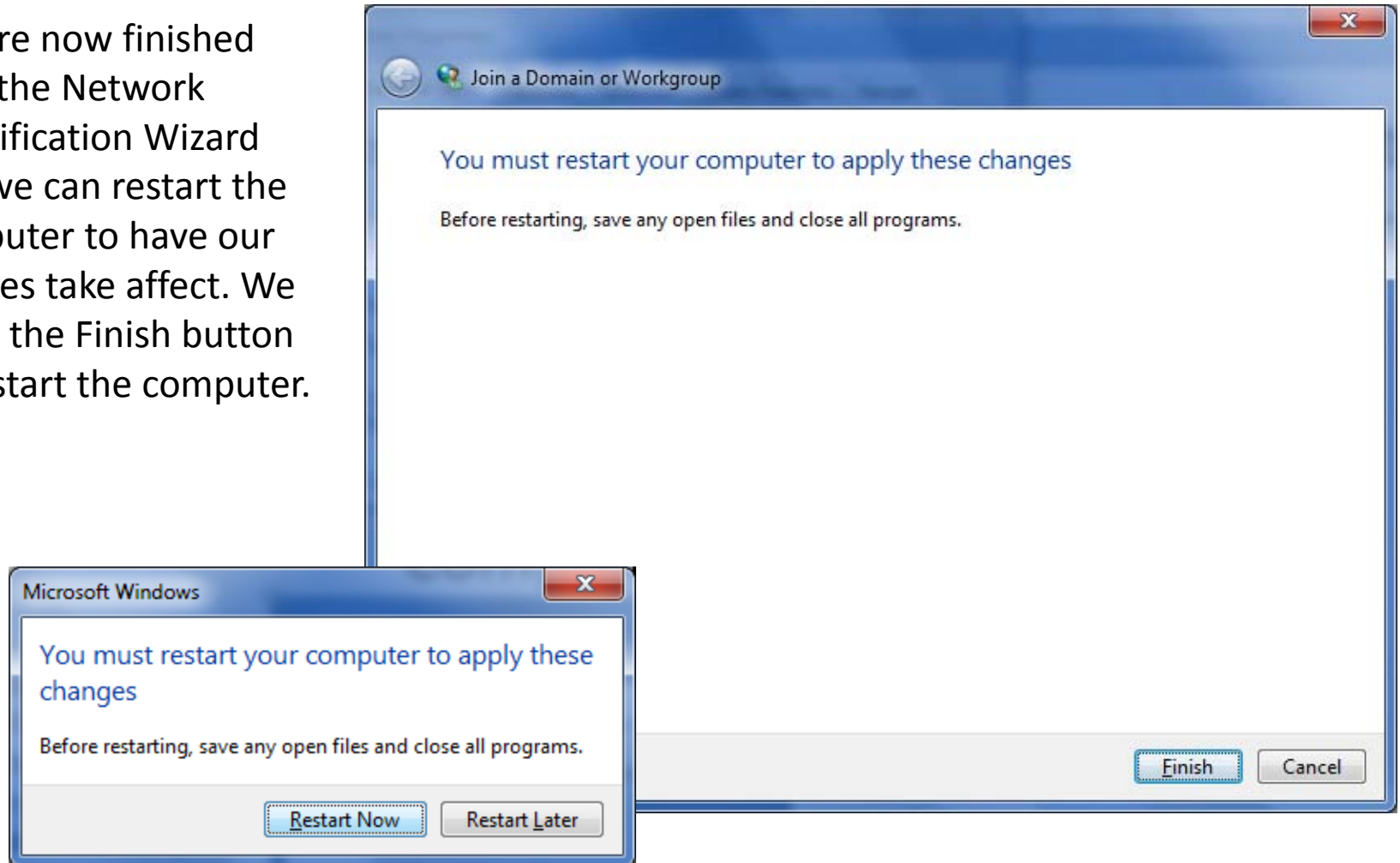
# Access Level

We can give crobbins standard user control, which will allow a user to change system settings and to add new programs. Restricted user control can allow for the use of programs and saving files. One choice is to give the new user administrative rights under the Other option. We will decide on the Standard user selection and pick the Next button to proceed.



# Network Identification Wizard Complete

We are now finished with the Network Identification Wizard and we can restart the computer to have our choices take affect. We press the Finish button to restart the computer.



# Domain User – Charles Robbins

When the computer restarts, we press Ctrl – Alt – Del to bring up the logon window. We then will type in the username, password and domain at the first window. When the Windows 7 Professional operating system loads, we can see the Charles Robbins account is operational.

