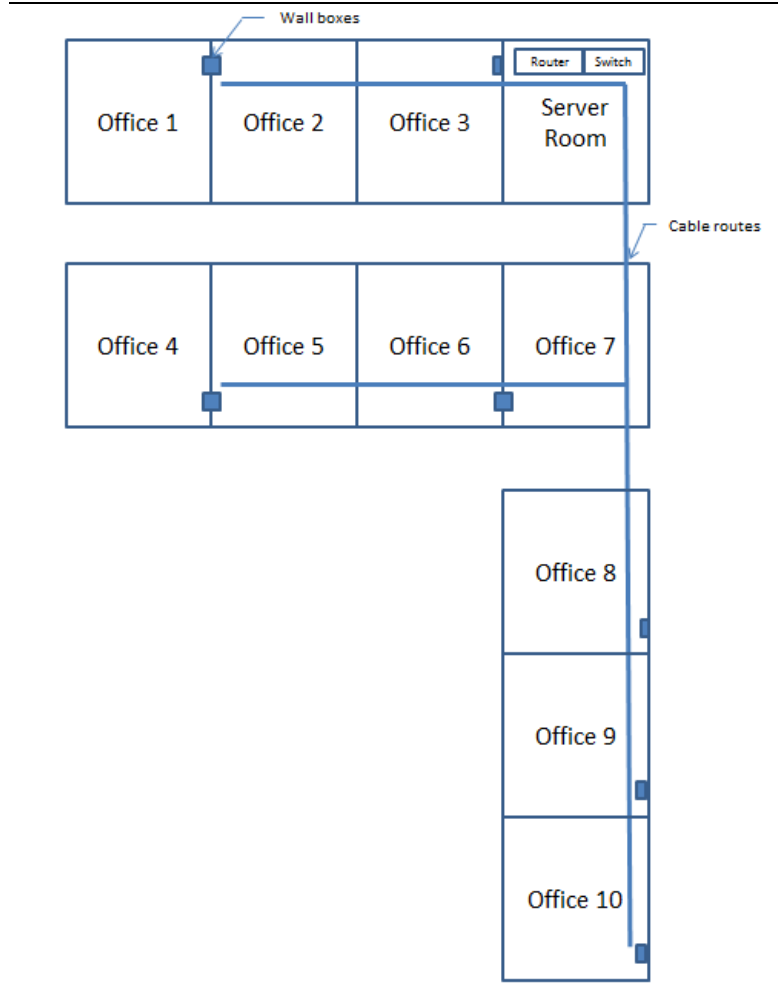


## Cabling Quiz 5

Name: \_\_\_\_\_ Date: \_\_\_\_\_

1. Estimate the feet of cable for the office building with 12-foot-by-12-foot workspaces. The hallways are 5 feet wide. Ceiling height is 10 feet. Each office has one RJ45 port. The server room does not have wall receptacles. We will plan for 20% extra cable on each run.

Office	Length	20%	Total
1			
2			
3			
4			
5			
6			
7			
8			
9			
10			
Total			



2. Each office needs one patch cable that is 16 feet long. We need a cable from the switch to the router and another one from the router to the fiber optic transceiver. How much more cable do we need and revise your total estimate of feet of cable for the above office building.