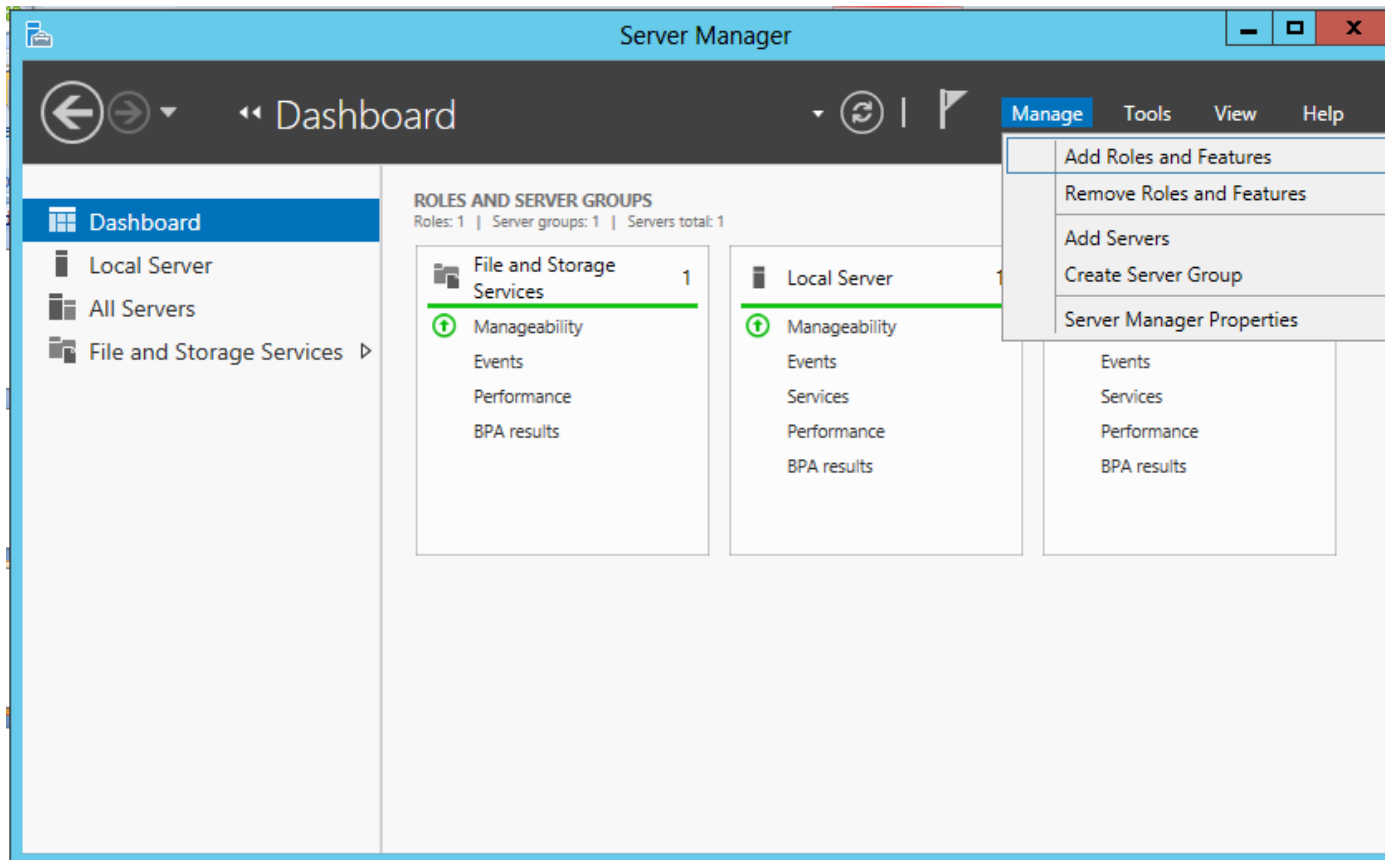


Installing Active Directory on a Windows 2012 Server

June 18, 2013

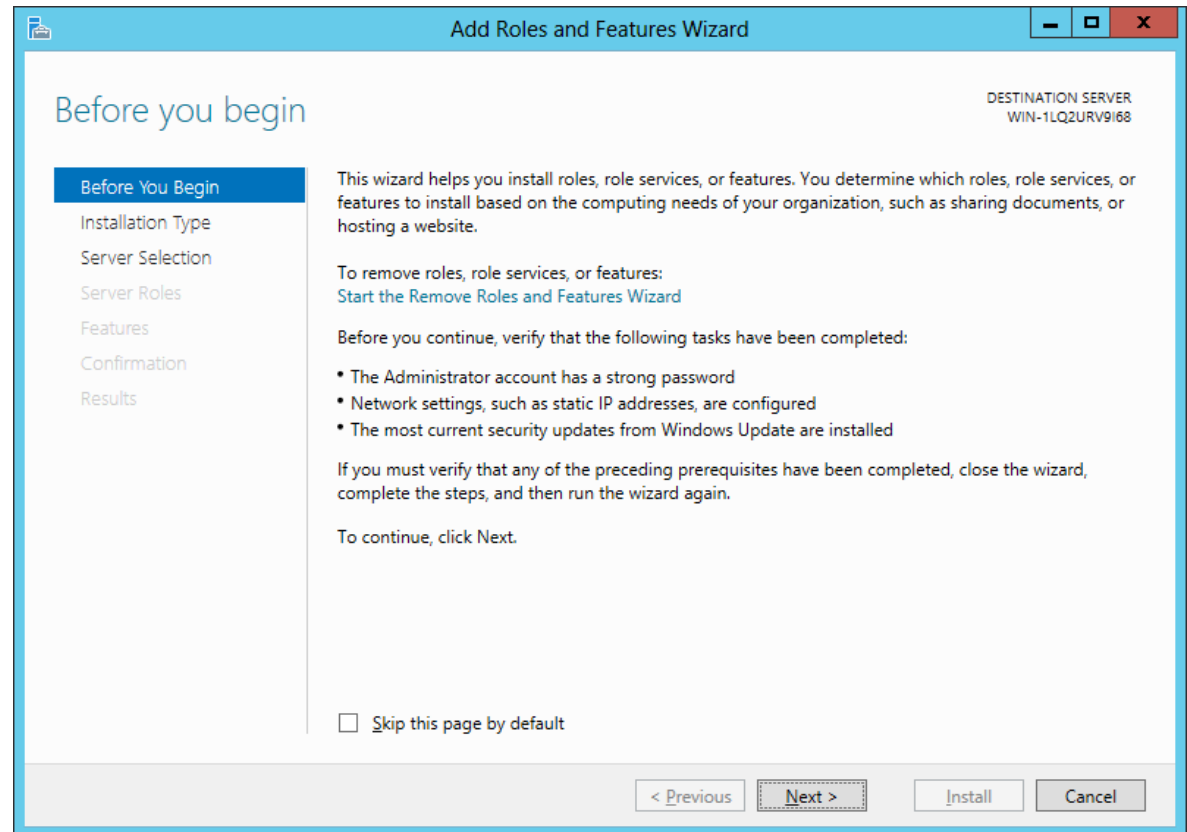
Setup Security Policies

To add a new role such as Active Directory Services on the Windows 2012 Standard Server, we select the Server Manager button from the Task Bar and select Manage from the Dashboard. From the list we choose Add Roles and Features.



Before You Begin

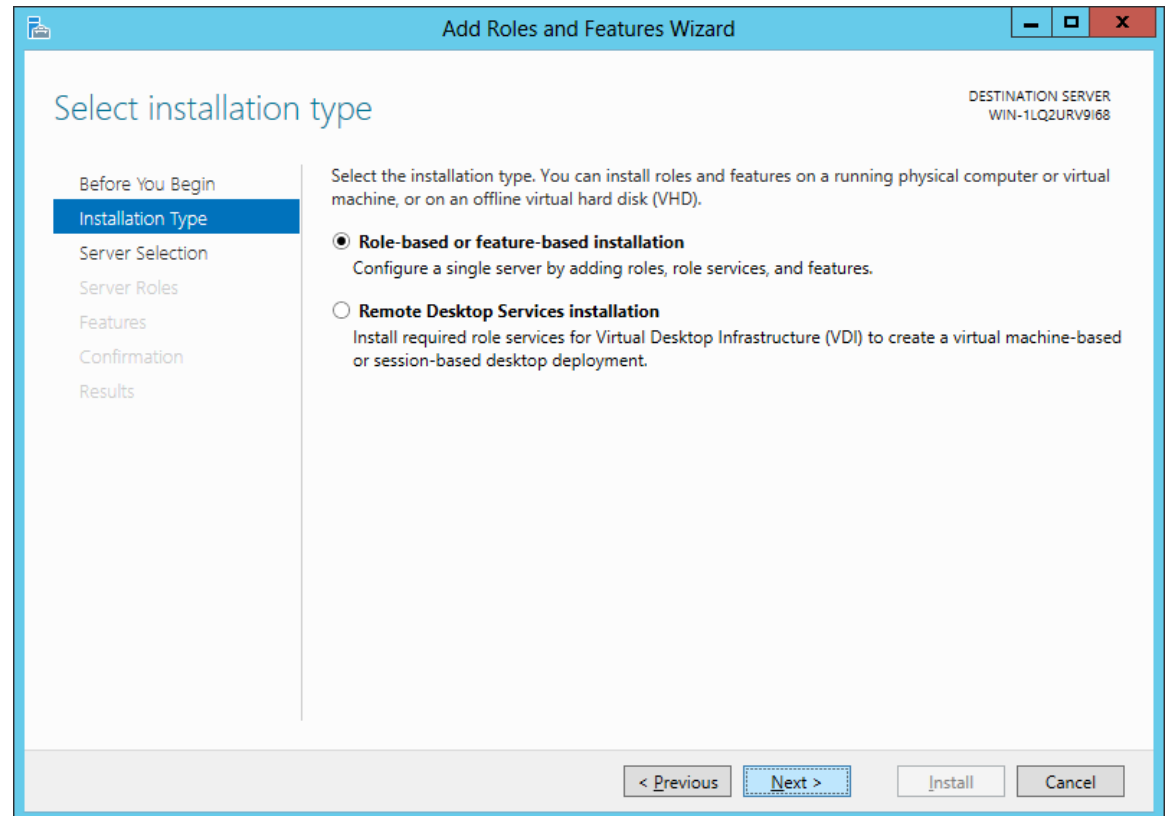
Before we add a role to the Windows 2012 Standard Server, we will want to have a smart password on our administrator account, to configure our network connections with a static IP address and we want to have the most current Service Packs and Windows Updates loaded. If this is done, then we can go ahead and press the Next command button.



Installation Type

Then we opt for the installation type which is either Role based or Remote Desktop Services Installation. For a stand alone server, we will choose the Role based option.

Press the Next button to continue.



Select Destination Server

Now we will select a server from the server pool. This can be a physical or virtual server. We opt to choose a server from the server pool and we highlight our server name from the list.

Press the Next button to advance.

The screenshot shows the 'Add Roles and Features Wizard' window. The title bar reads 'Add Roles and Features Wizard'. The main heading is 'Select destination server'. On the right side, there is a 'DESTINATION SERVER Charm' label. The left sidebar contains a list of steps: 'Before You Begin', 'Installation Type', 'Server Selection' (highlighted), 'Server Roles', 'Features', 'Confirmation', and 'Results'. The main content area has the instruction 'Select a server or a virtual hard disk on which to install roles and features.' Below this are two radio buttons: 'Select a server from the server pool' (selected) and 'Select a virtual hard disk'. Underneath is a 'Server Pool' section with a 'Filter:' input field. A table lists the server pool contents:

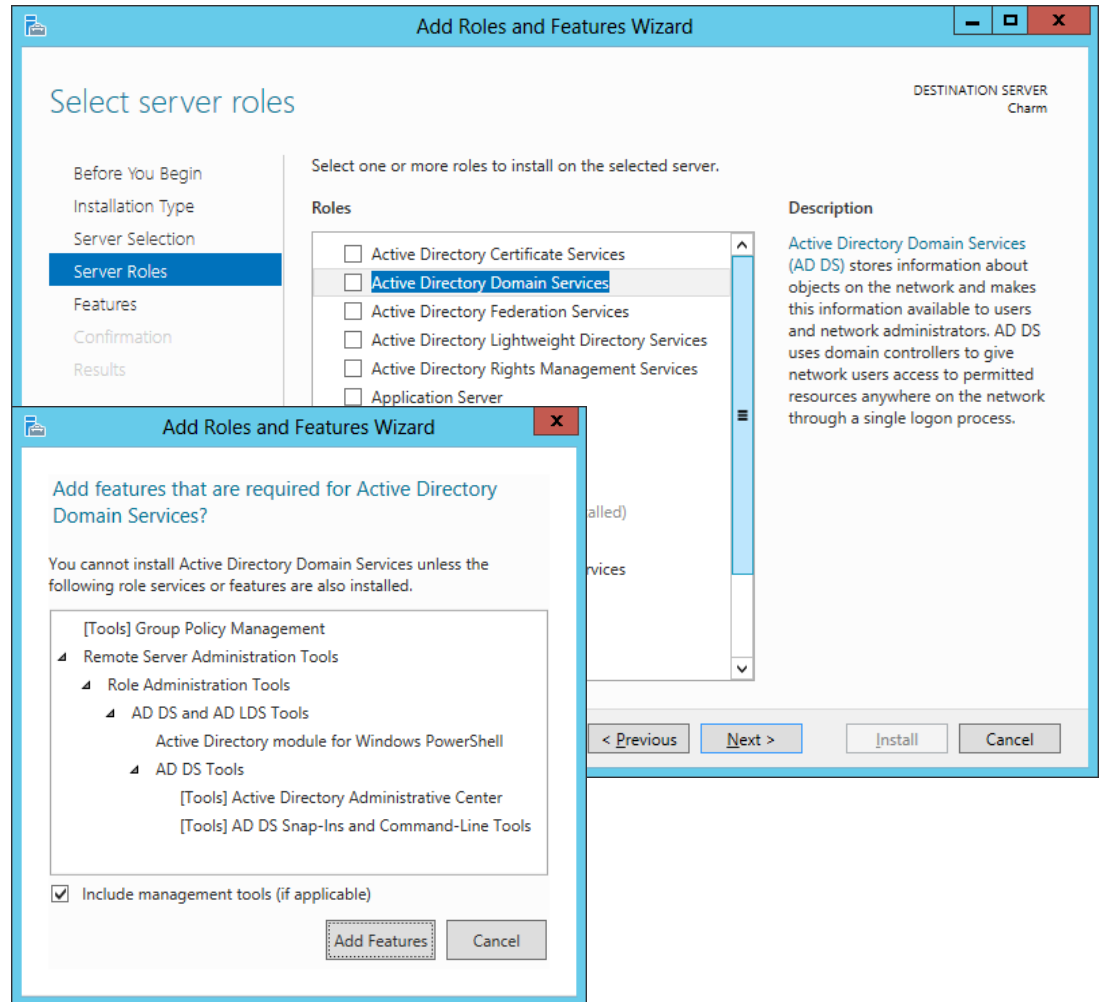
| Name | IP Address | Operating System |
|-------|----------------|--|
| Charm | 192.168.10.230 | Microsoft Windows Server 2012 Standard |

Below the table, it says '1 Computer(s) found'. A note at the bottom states: 'This page shows servers that are running Windows Server 2012, and that have been added by using the Add Servers command in Server Manager. Offline servers and newly-added servers from which data collection is still incomplete are not shown.' At the bottom of the window are four buttons: '< Previous', 'Next >', 'Install', and 'Cancel'.

Select Server Role

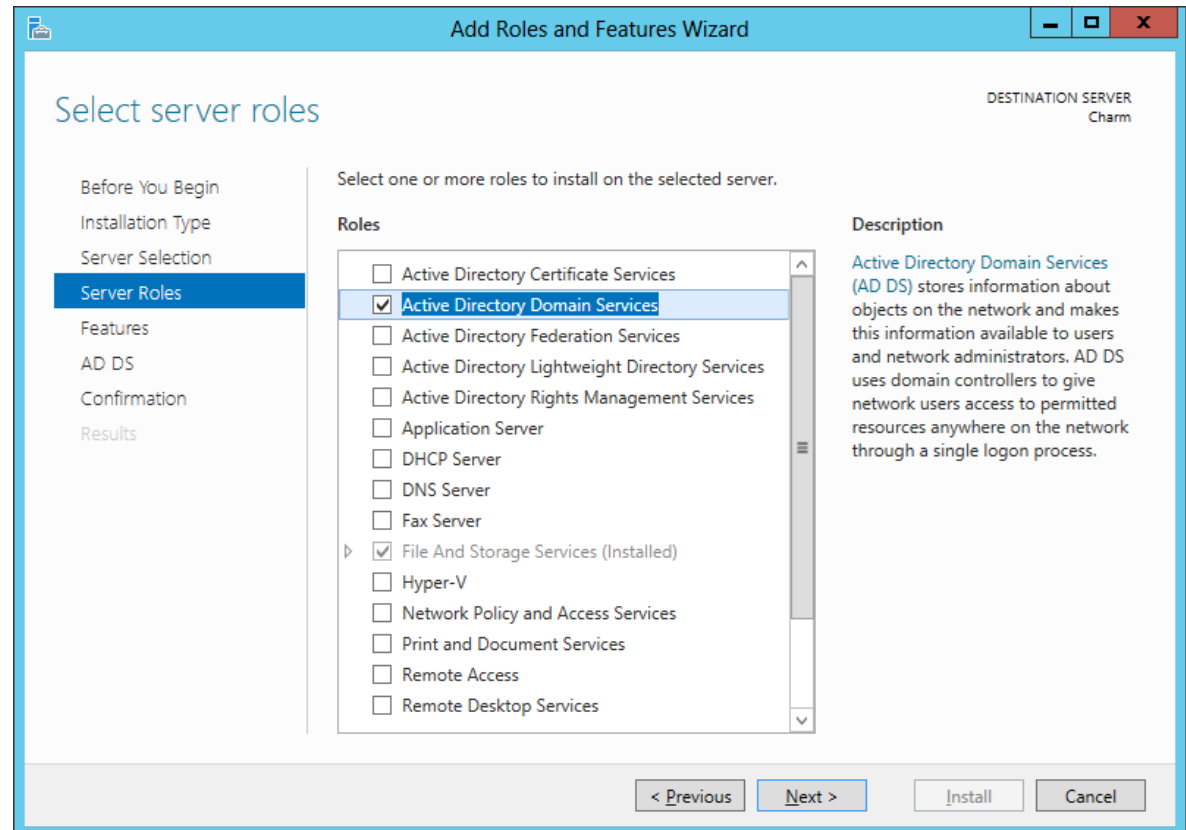
The Add Roles and Features Wizard window shows the multitude of functions a 2012 server can provide. We annotate the Active Directory Domain Services checkbox and press the Next button.

A smaller dialogue box will appear and we then press the Add Features button on that pop up window.



Confirm Installation Selections

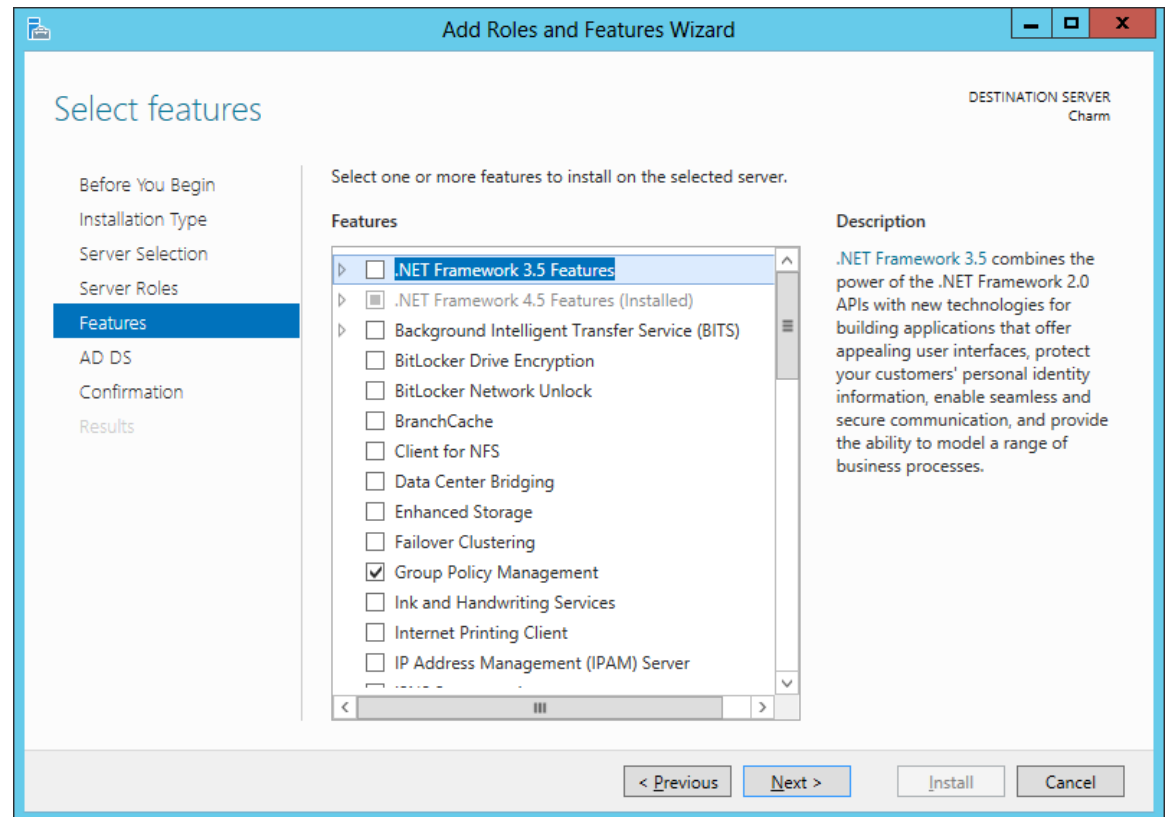
The Active Directory Domain Services role is now checked on the roles list and we push the Next button to continue.



Features Window

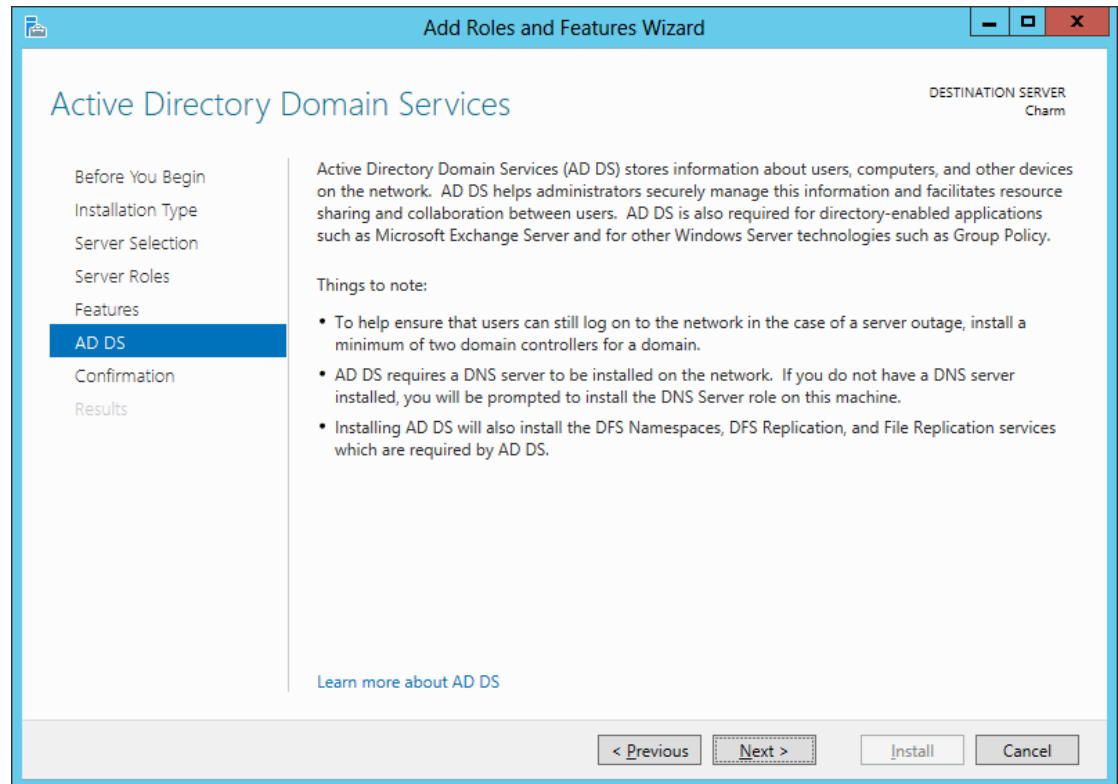
Next, the Features window comes up and we will not add any features at this time.

Press the Next button to go on.



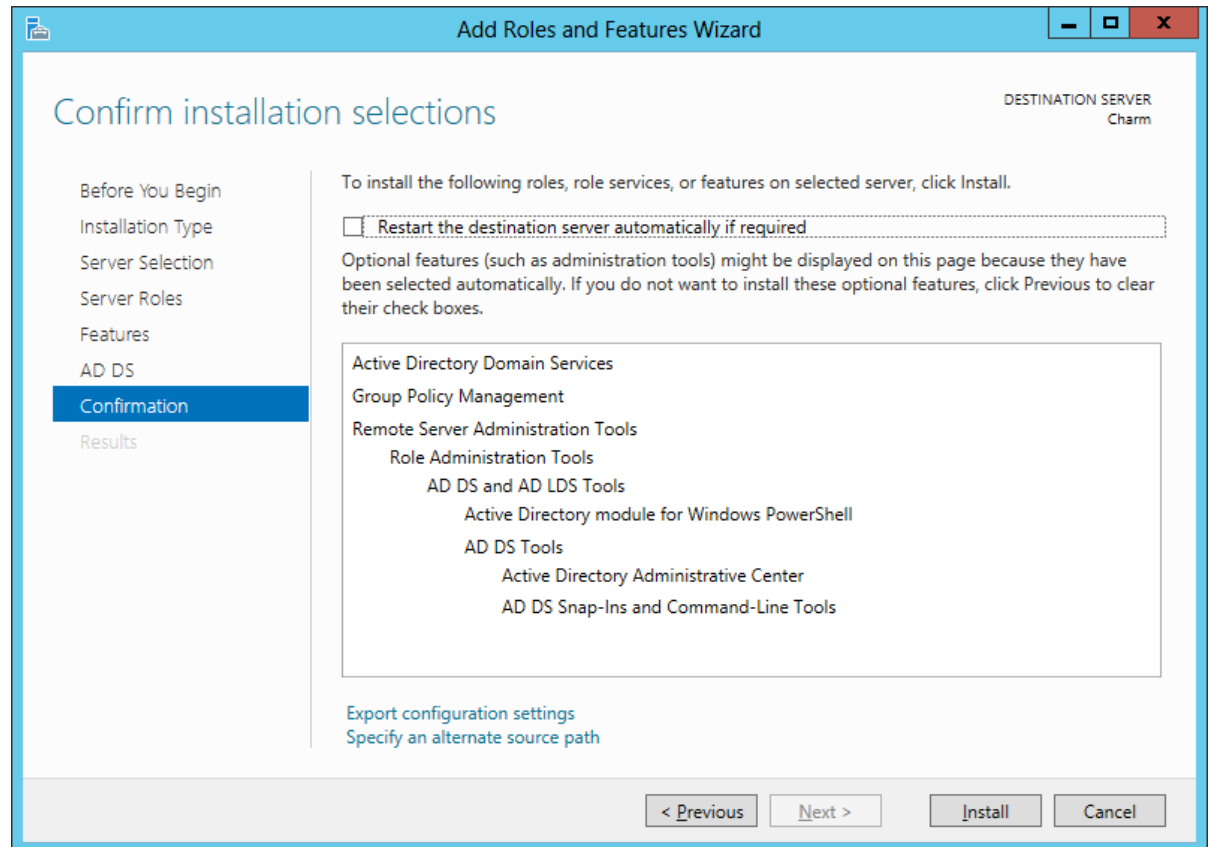
Active Directory Domain Services

The Active Directory Domain Services window will explain the DNS deployment and Active Directory. We press the Next button to continue.



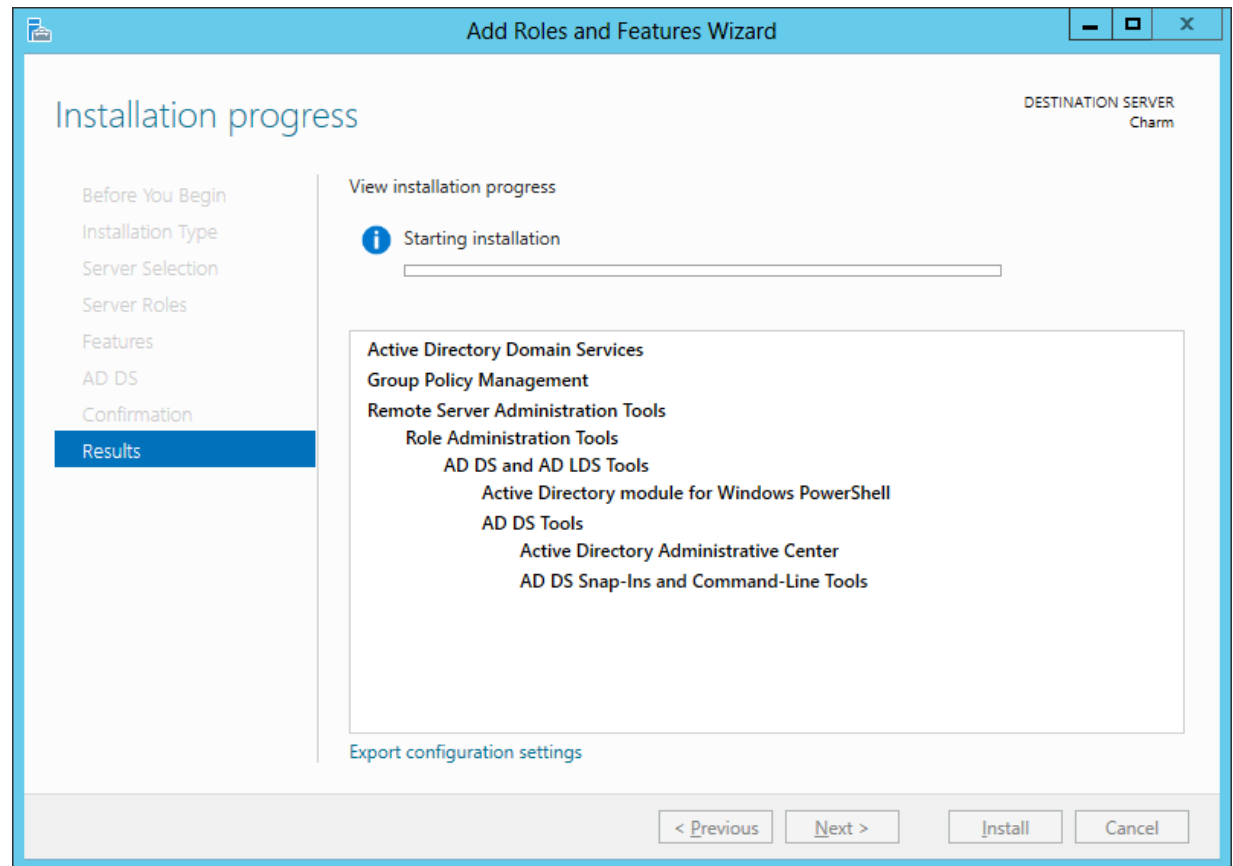
Confirm Installation Selections

We confirm that we want to set the machine up as a Active Directory Domain Services, so we pick the Install button to proceed.



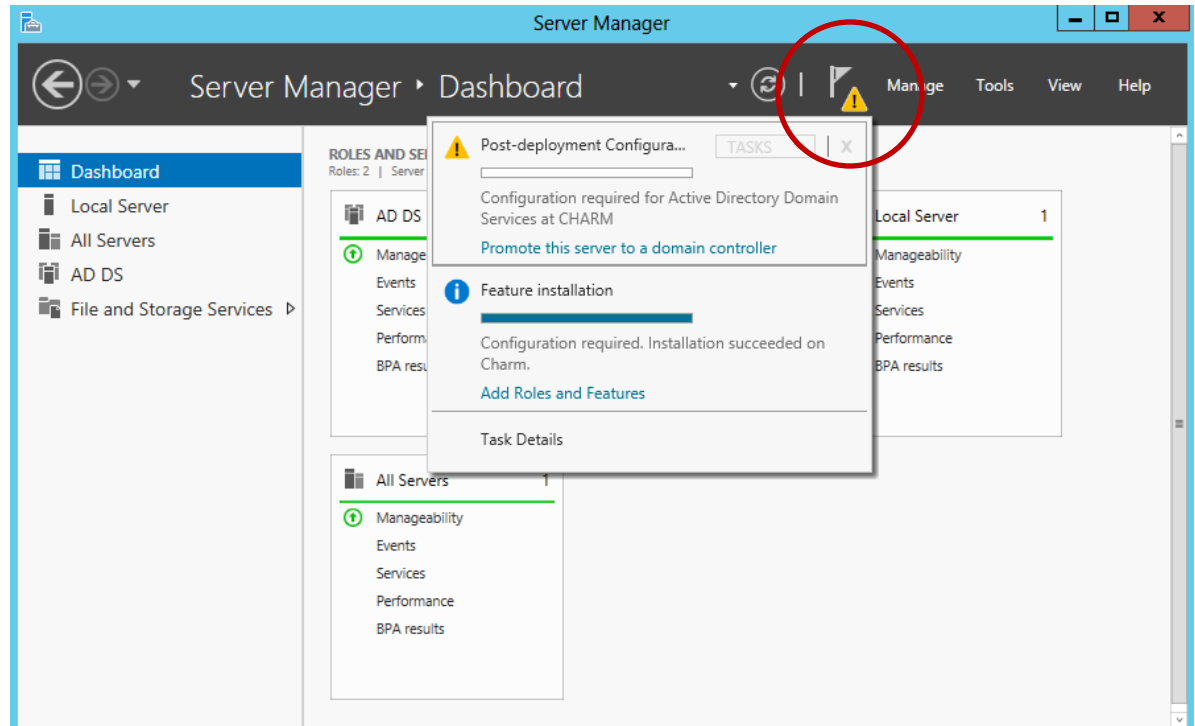
Installation Results

Finally, the server Active Directory Services role installation is completed. We can close the window.



View Server Manager

Active Directory Domain Services is installed but is not running. We still need to make our server a Domain Controller and set up our DNS server. Click on the yellow warning icon at the top of the Server Manager Dashboard and left click on the “Promote this server to a Domain Controller” hyperlink.

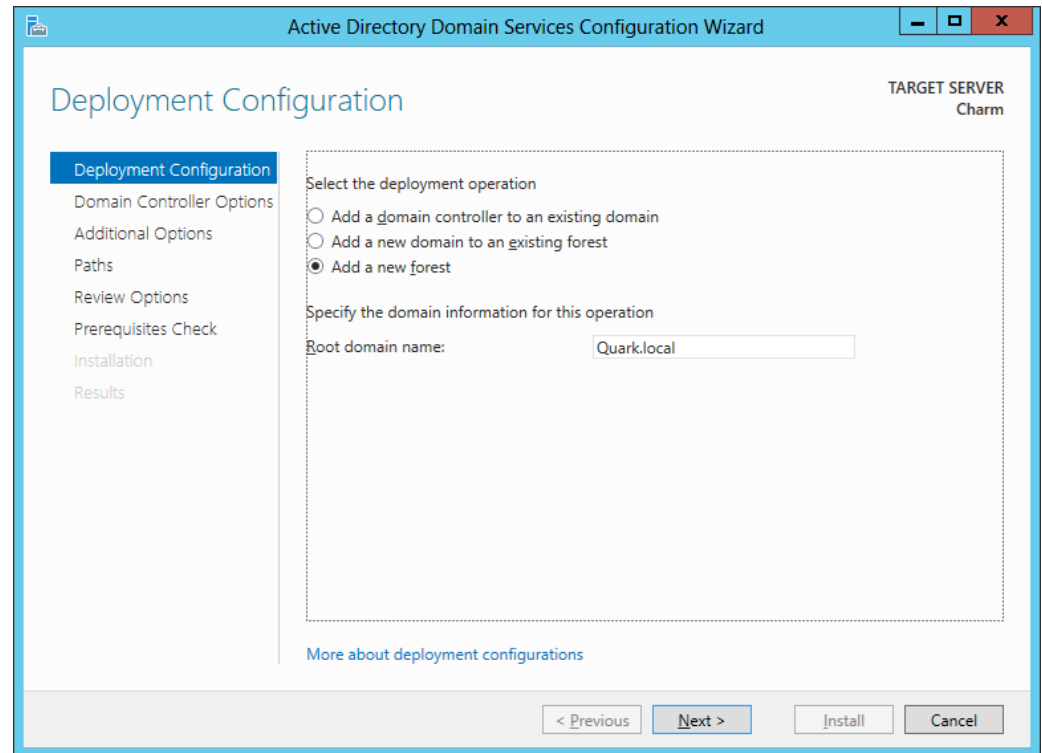


Deployment Configuration

We will select add a new forest and we will give our new forest a unique domain name. We type in our Fully Qualified Domain Name (FQDN) that we registered or we can type the domain name and .local for non registered names.

If this was going to be added to another existing domain, we would opt for joining an existing forest. The add a domain controller to an existing domain will add another server to a tree. The new domain in a existing forest will begin a new tree.

We press the Next button to continue.

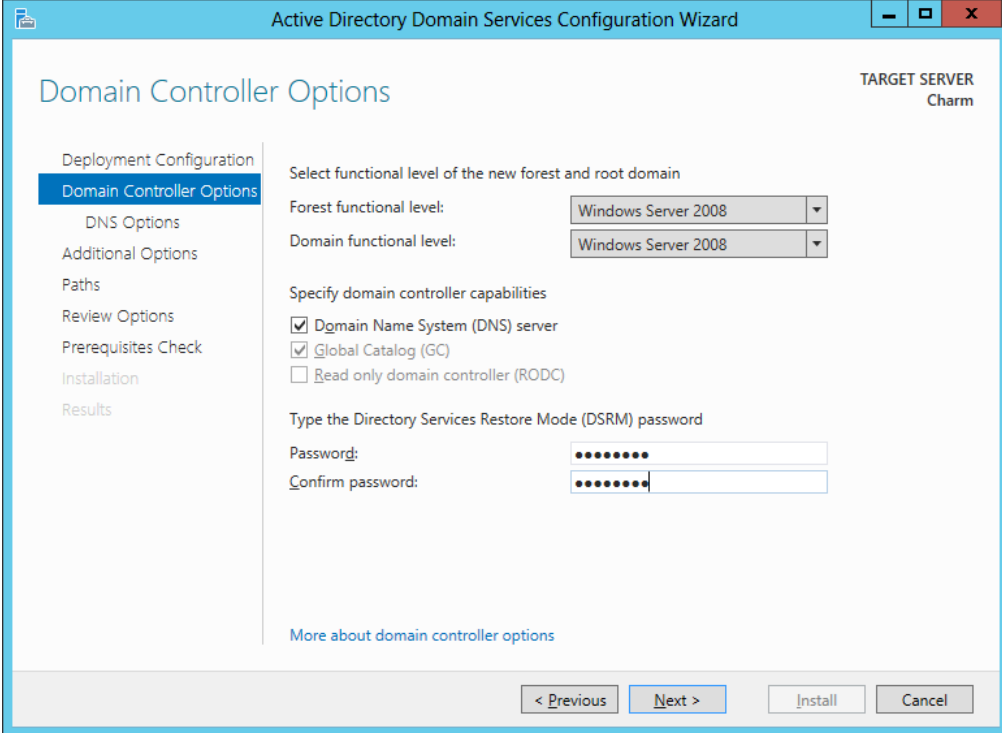


Domain Controller Options

We can choose the forest functional level. We only have 2008 and 2012 servers, so we pick that stage. If we had 2003, 2008 and 2012 servers, we could opt for 2003 servers.

We keep the Domain Name System (DNS) server and Global Catalog checkboxes annotated for our Domain Controller. Then we type our Directory Services Restore Mode password.

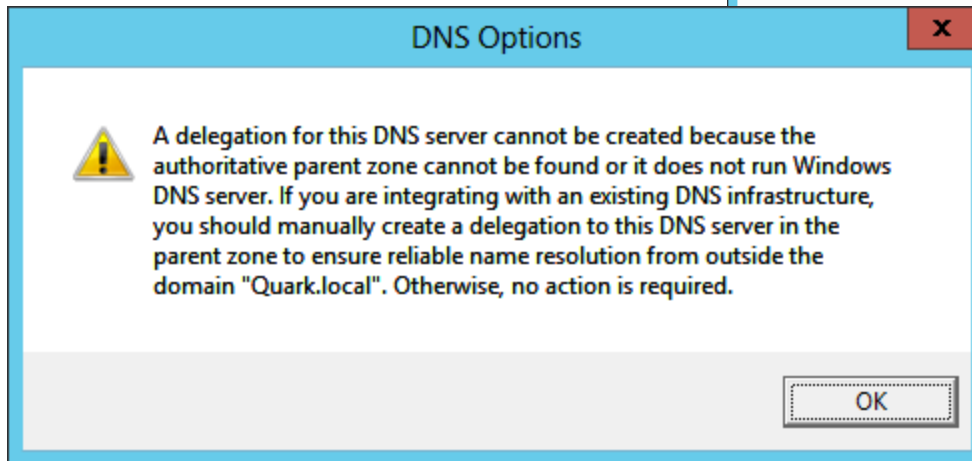
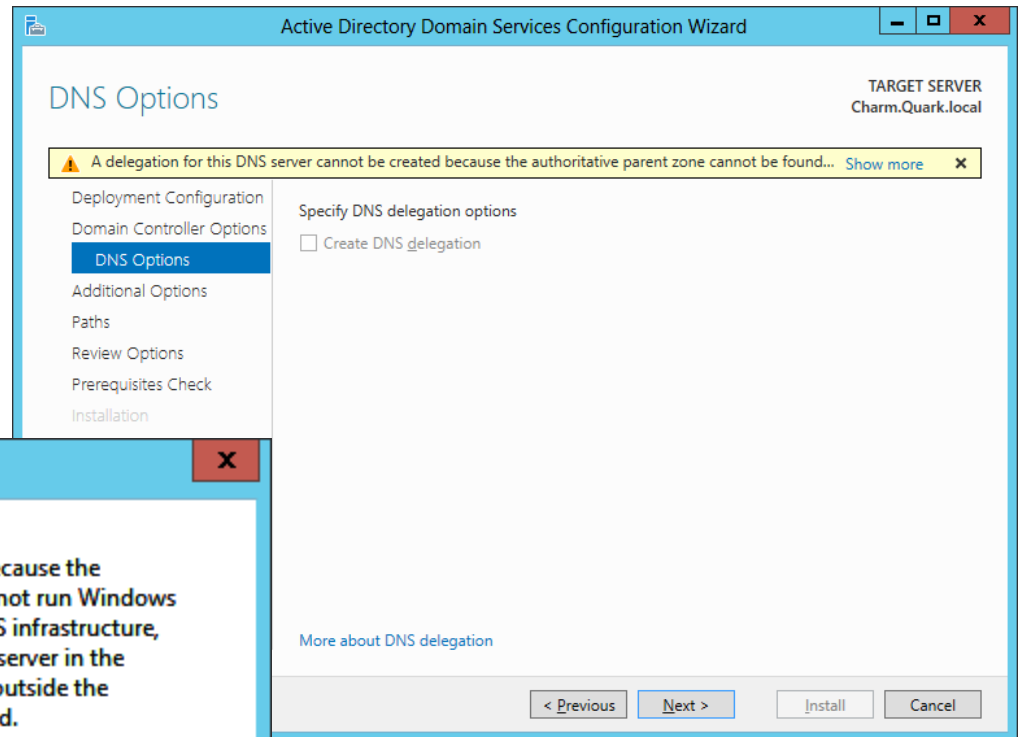
We pick Next to continue.



The screenshot shows the 'Active Directory Domain Services Configuration Wizard' window. The title bar reads 'Active Directory Domain Services Configuration Wizard'. The main window title is 'Domain Controller Options'. On the right side, it says 'TARGET SERVER Charm'. The left sidebar contains a list of steps: 'Deployment Configuration', 'Domain Controller Options' (highlighted), 'DNS Options', 'Additional Options', 'Paths', 'Review Options', 'Prerequisites Check', 'Installation', and 'Results'. The main content area is titled 'Select functional level of the new forest and root domain'. It has two dropdown menus: 'Forest functional level:' and 'Domain functional level:', both set to 'Windows Server 2008'. Below this is the section 'Specify domain controller capabilities' with three checkboxes: 'Domain Name System (DNS) server' (checked), 'Global Catalog (GC)' (checked), and 'Read only domain controller (RODC)' (unchecked). The next section is 'Type the Directory Services Restore Mode (DSRM) password', with 'Password:' and 'Confirm password:' fields, both containing masked characters. At the bottom, there are four buttons: '< Previous', 'Next >', 'Install', and 'Cancel'. A link 'More about domain controller options' is also present.

DNS Options

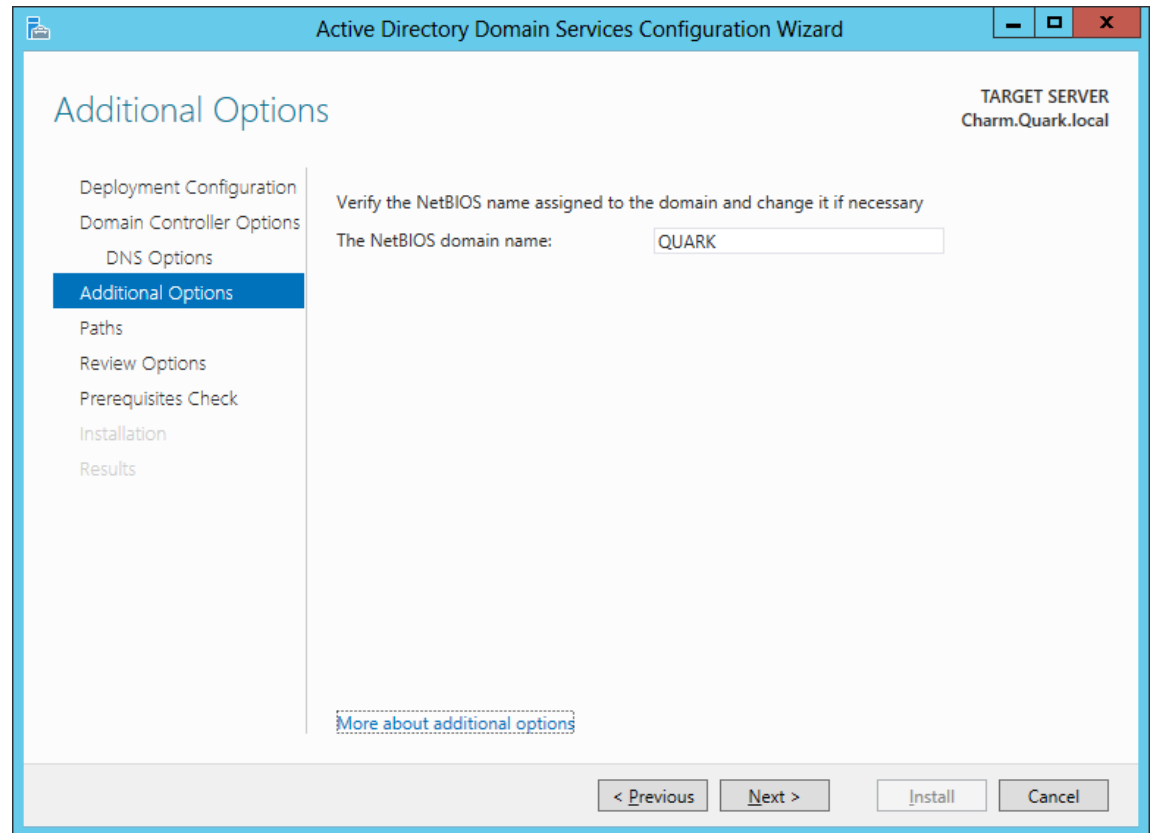
We already have the DNS server configured, so we will continue by pressing the Next button. The ISP delegation server might be a Linux computer and does not conform to the 2008 infrastructure. We will choose yes to advance.



Additional Options

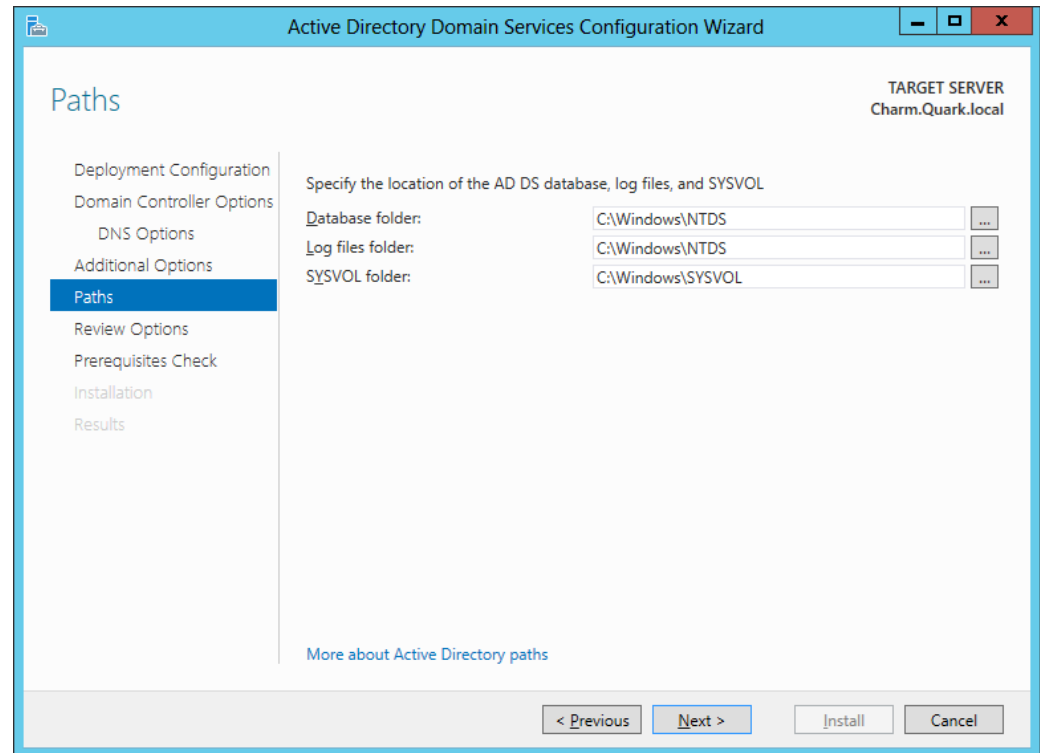
Next, we will want to verify the NetBIOS domain name.

We should push the Next button to advance.



Database, Log and SYSVOL Folders

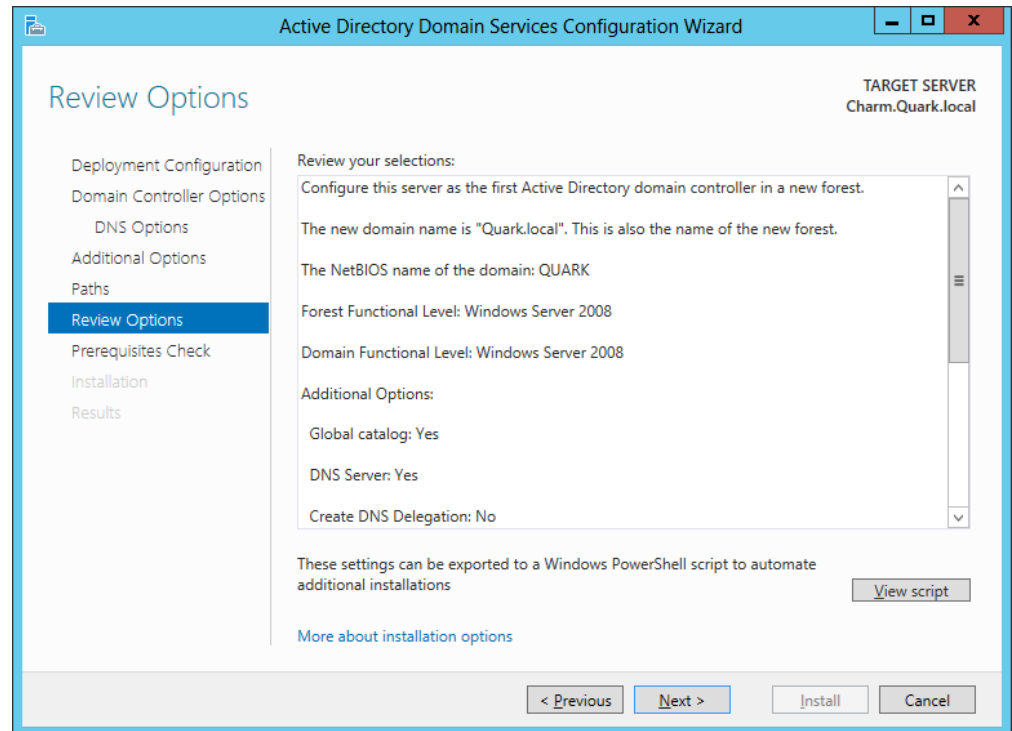
We typically choose the database and log folder defaults. However, we can direct the database and log files to another folder. The next folder location is for the shared system volume. We will maintain the default path and pick the Next button to advance.



Review Options

We now see a review of the choices we made with the Active Directory Domain Services Configuration Wizard. If we need to change anything we can go back to the particular window and make the change and advance back to this point.

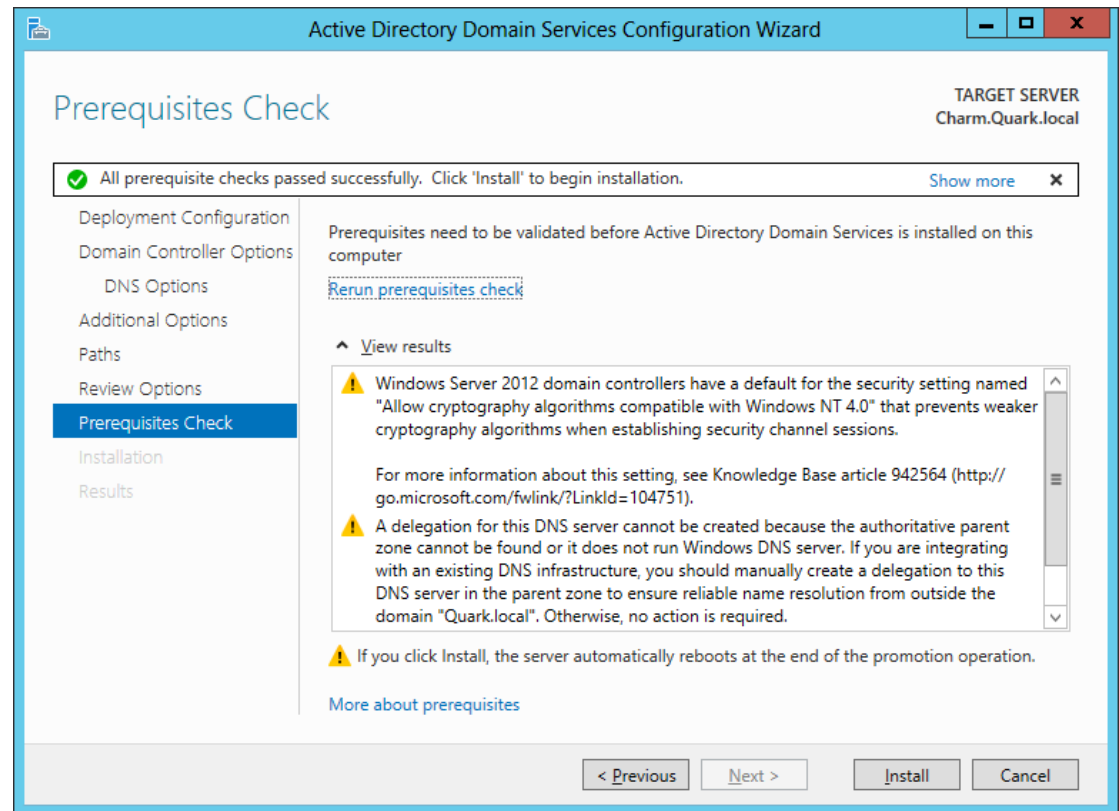
However, we agree with the summary and we press Next to continue.



Prerequisites Check

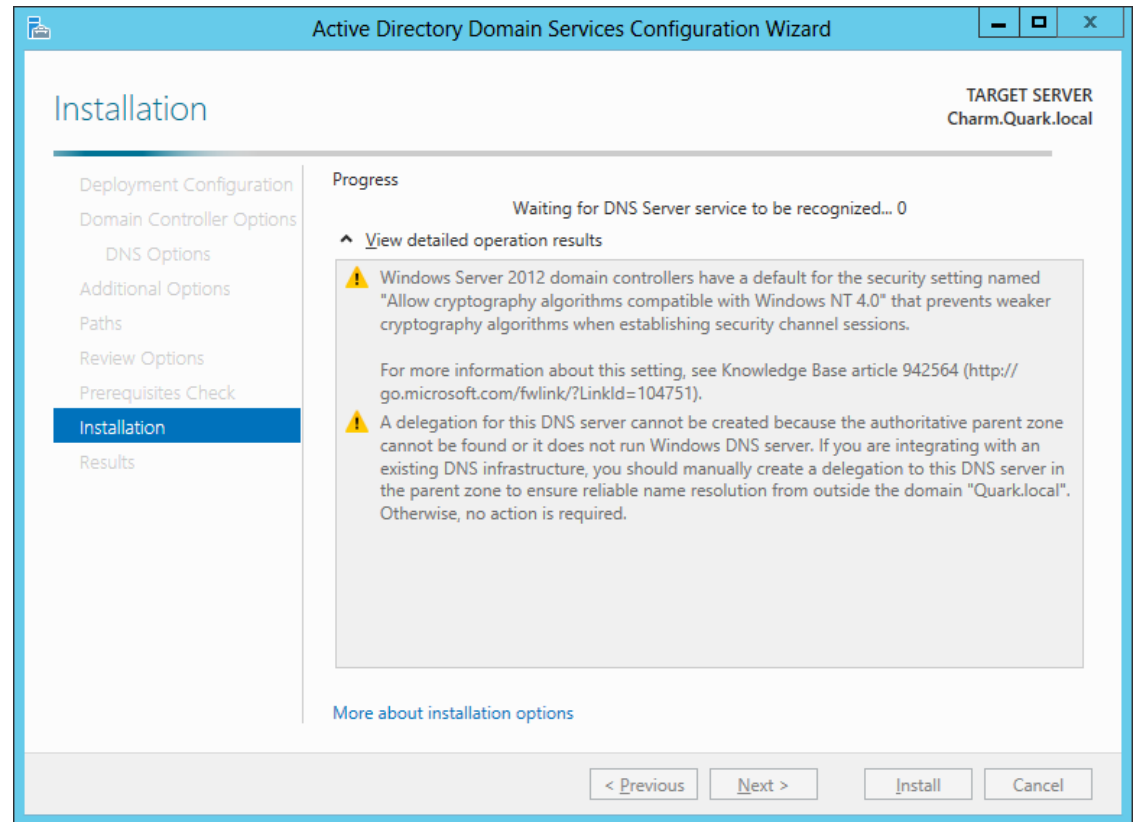
We will see some warnings during the prerequisites check such as DNS delegation. We will finish setting up the Domain Name Services after our server is a Domain Controller.

Press the Install button to continue.



Installation

The next window shows the installation in progress.



Results

After we the server is restarted , we will finish setting up the DNS server.

