

Setting Up Two NICs on a Windows 2012 Server

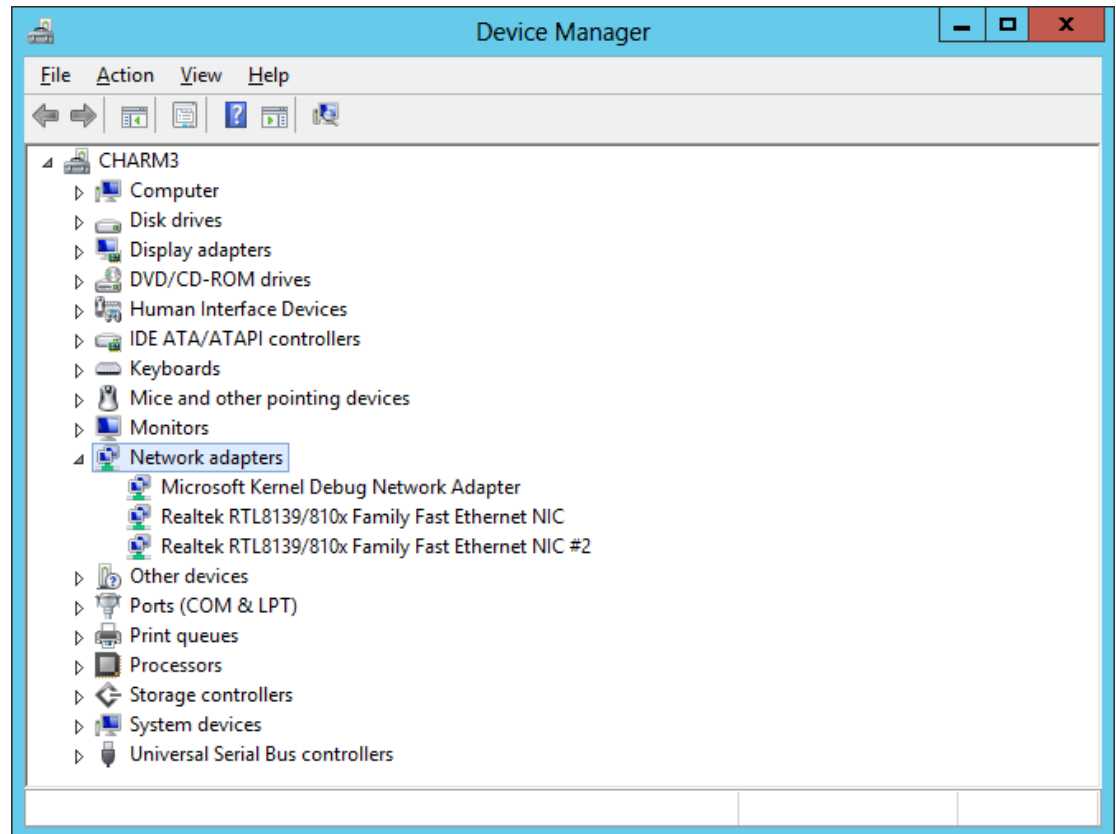
July 9, 2013

Two NICs in the Device Manager

We need to install the second NIC if we did not already do so when we built the computer for our Windows Server 2012 computer.

We can right click on Computer on the Start menu and select Properties from the list.

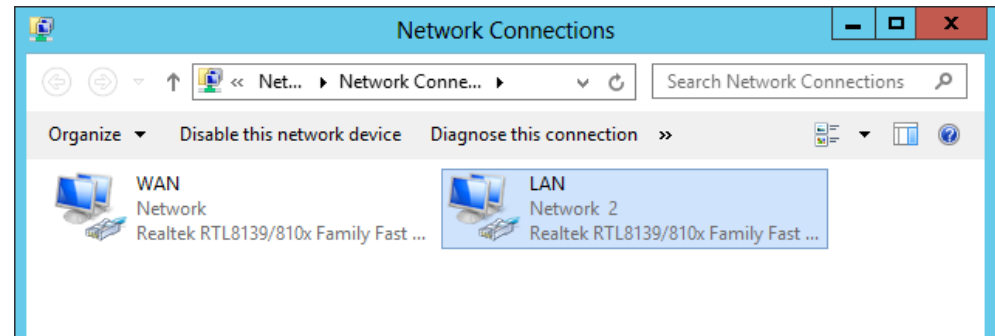
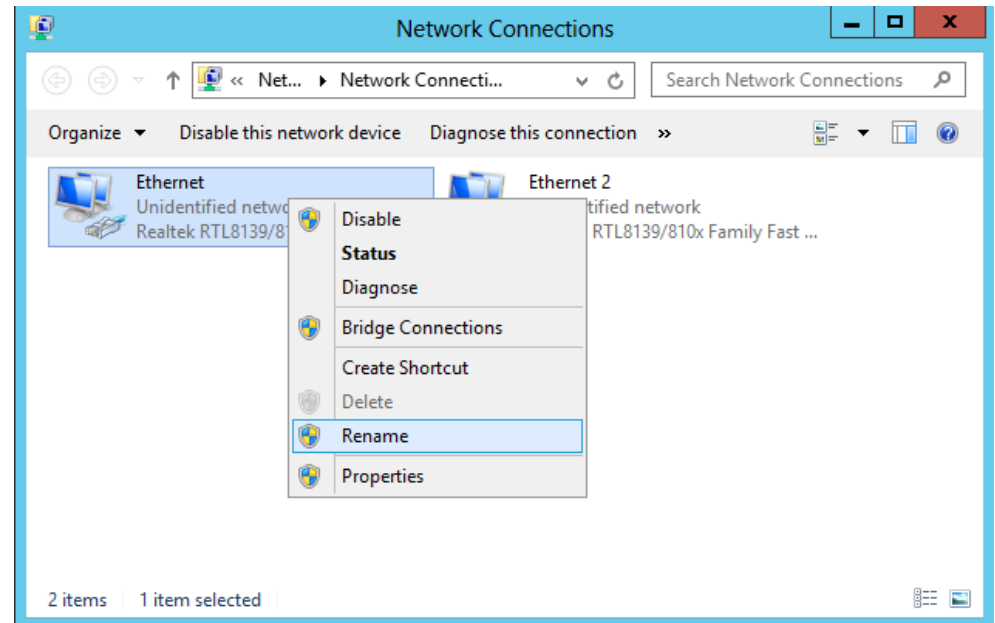
On the Systems window, we should pick Device Manager. We can see both Network adapters.



Naming the External NIC

We should give the NICs identifiers that will allow us to quickly determine what they control just by reading. The card that connects the server to the outside networks can be called such names as external, Internet or outside.

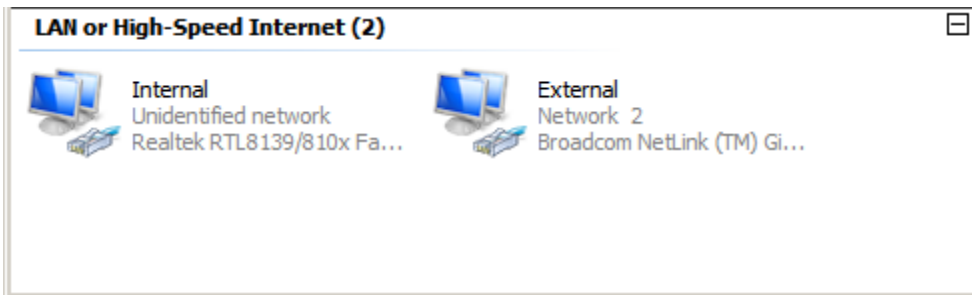
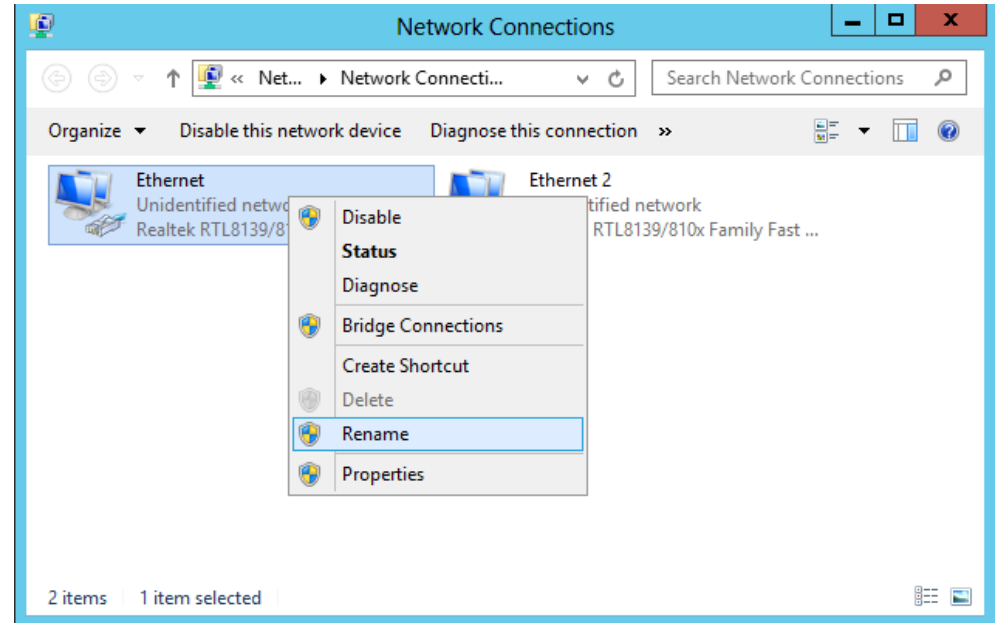
To make the name alteration, we enter the Control Panel and then Network Sharing Center. Select the Manage Network Connection icon. Right click on the NIC that connects to the Internet and select Rename. Type External in the new name textbox. Press Enter to accept the change.



Naming the Internal NIC

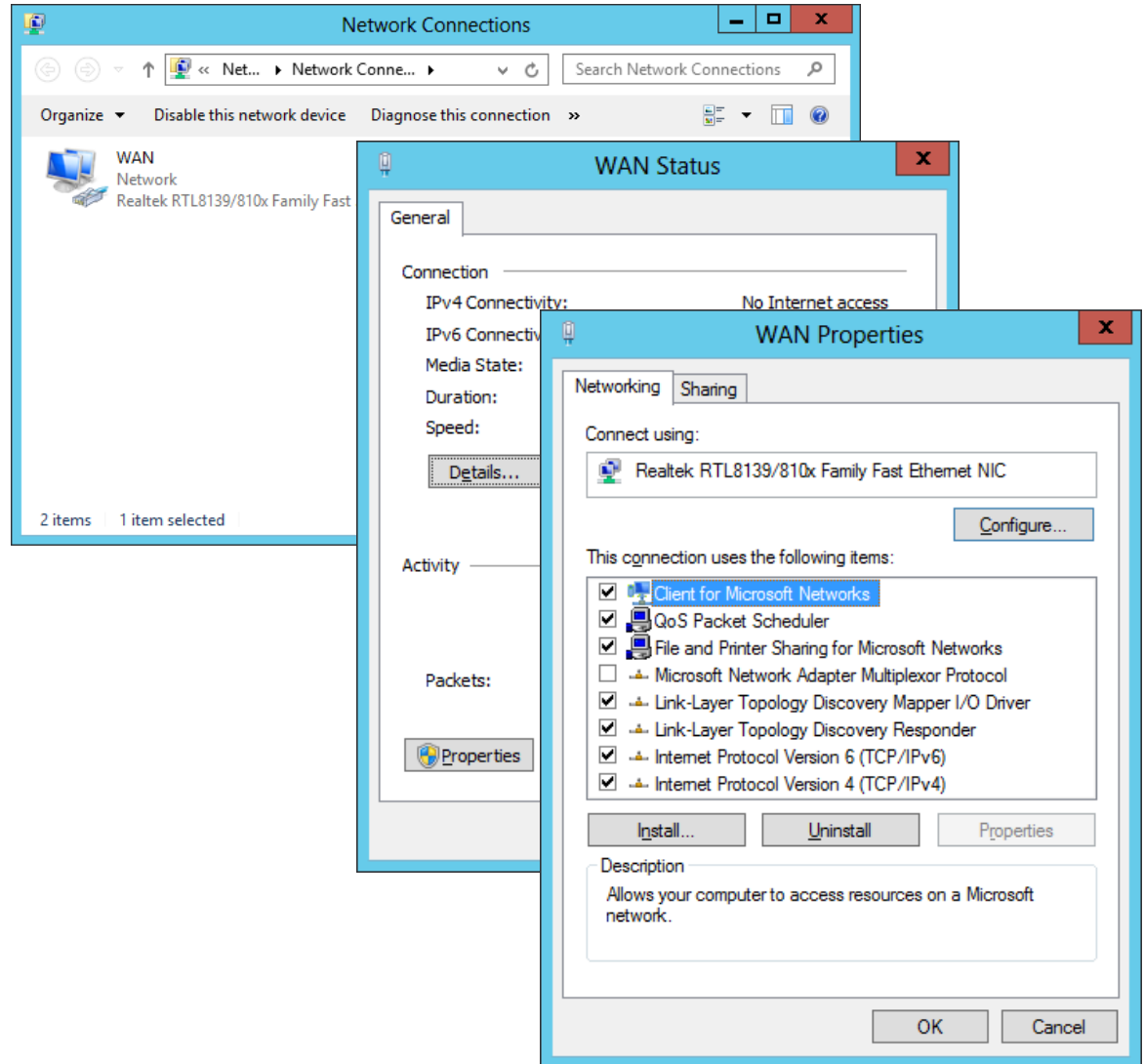
The card that connects the server to the inside networks can be called such names as internal, Intranet or inside.

To make the name alteration, we right click on the NIC that connects to the Internet and select Rename. Type External in the new name textbox. Press Enter to accept the change.



The External NIC

Now, we go to the Network Connection window and select the external NIC (WAN). The WAN Status window will open and we will select the Properties button. At the WAN Properties window, we choose Internet Protocol Version 4.



The External NIC TCP/IP Settings

The computer will tell us that the IP address 192.168.10.232 will be used for our system. We will continue to utilize the external IP address scheme, gateway IP and DNS IP addresses that we previously had installed on the WAN network interface card.

Internet Protocol Version 4 (TCP/IPv4) Properties

General

You can get IP settings assigned automatically if your network supports this capability. Otherwise, you need to ask your network administrator for the appropriate IP settings.

Obtain an IP address automatically

Use the following IP address:

IP address: 192 . 168 . 10 . 232

Subnet mask: 255 . 255 . 255 . 0

Default gateway: 192 . 168 . 10 . 1

Obtain DNS server address automatically

Use the following DNS server addresses:

Preferred DNS server: 192 . 168 . 10 . 1

Alternate DNS server: . . .

Validate settings upon exit

Advanced...

OK Cancel

The Internal NIC

Now, we will setup the Internal network interface card. We double click on the Internal card and the Internal NIC Status window will open and we will select the Properties button. At the Internal Properties window, we double click on the TCP/IP Internet Protocol. We can type our own IP address scheme in for the Intranet IP of 192.168.100.1. The subnet mask will be 255.255.255.0. We leave the gateway and DNS IP addresses blank.

