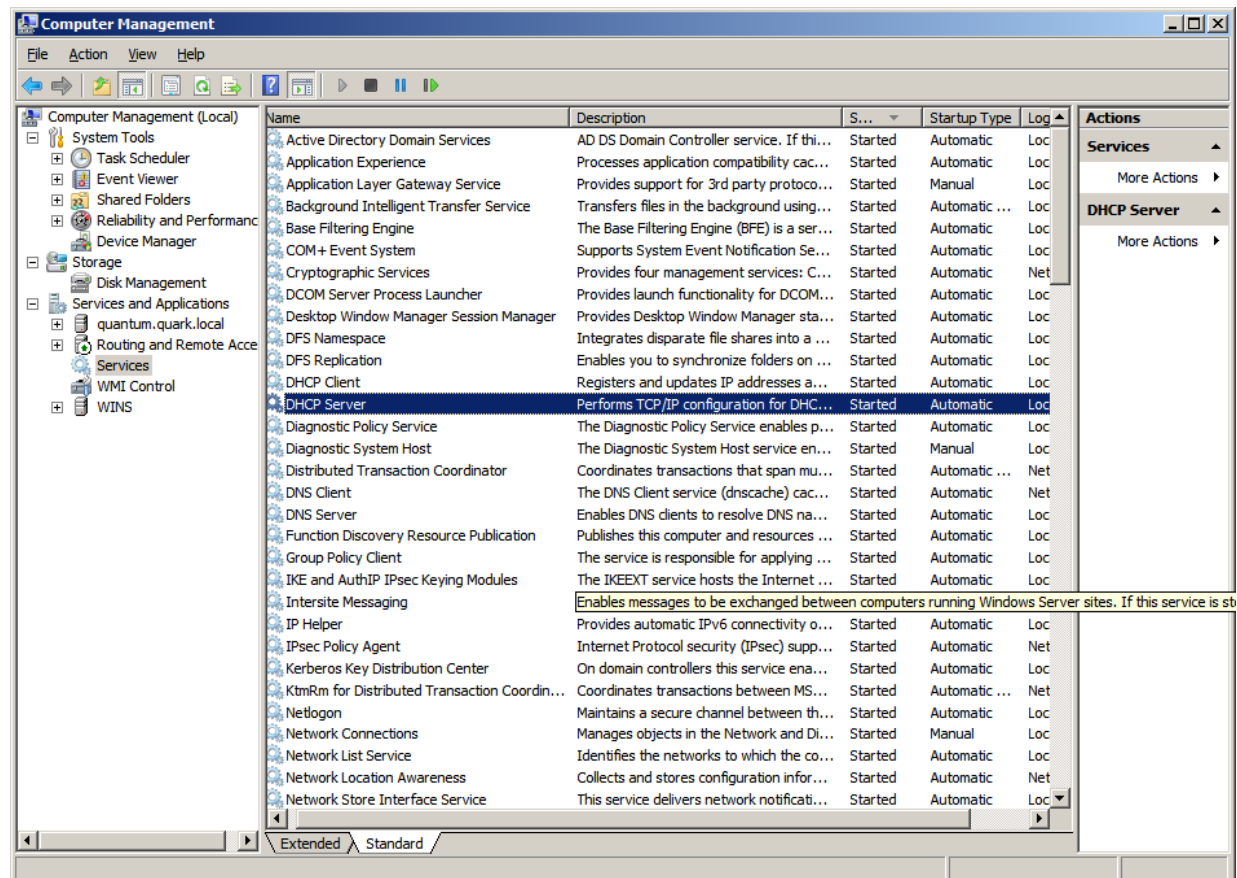


Managing a Service

June 18, 2012

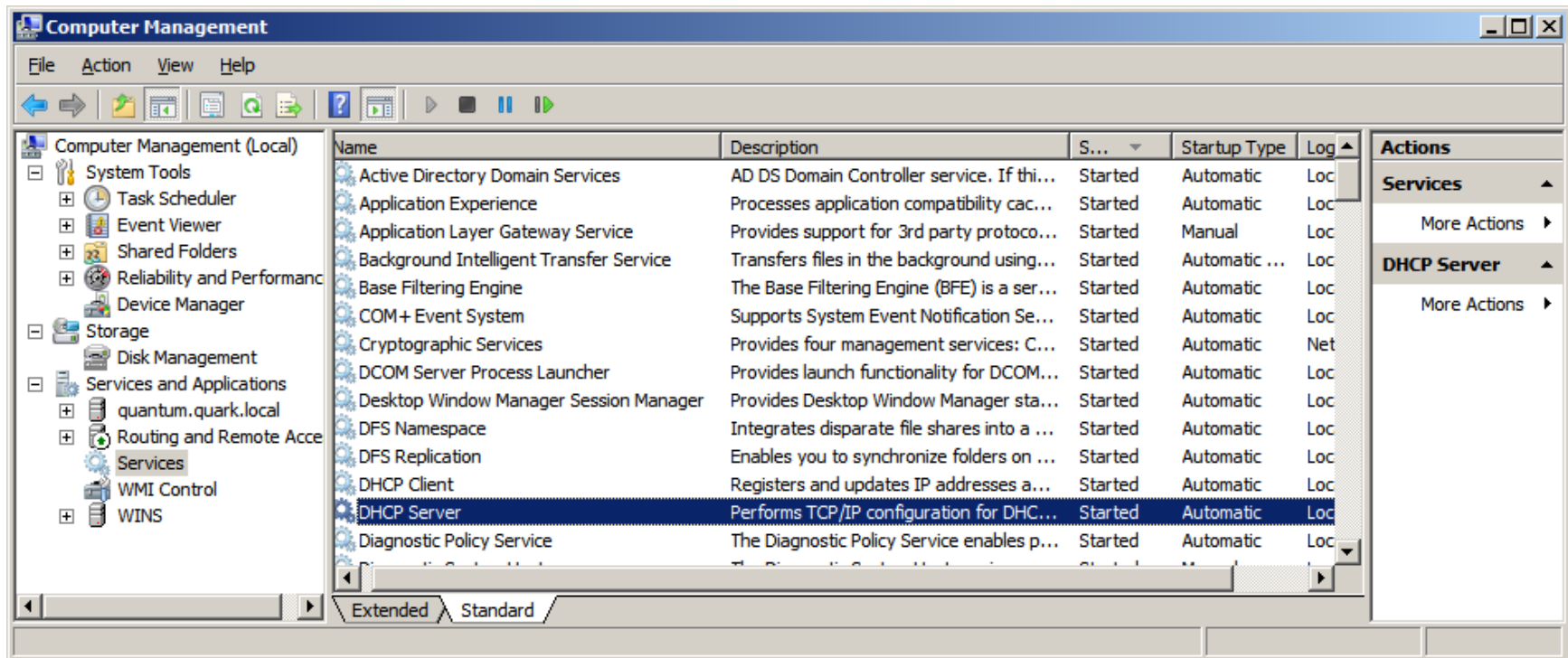
Services

To access Services, we can either open Administrative Tools on the Start menu or we can open Computer Management and select Services and Applications and then pick Services. We pick the Standard tab at the bottom of the window for a condensed view.



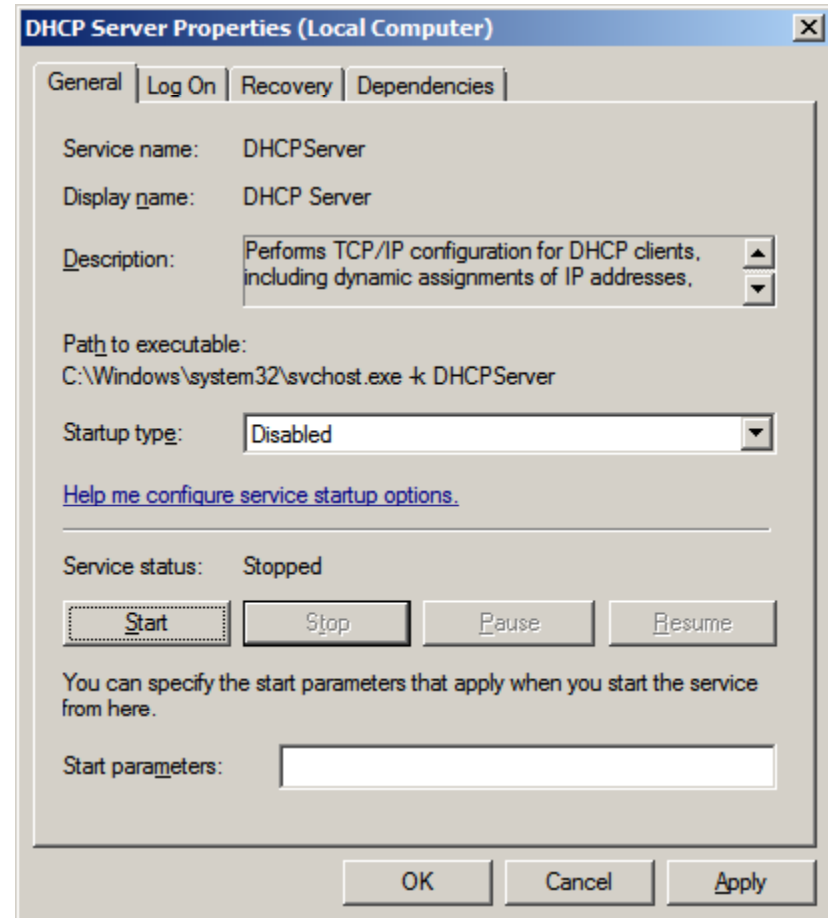
Open the DHCP Service

Highlight and double click on the DHCP Server from the list of services on the Windows 2008 server.



DHCP Server Properties

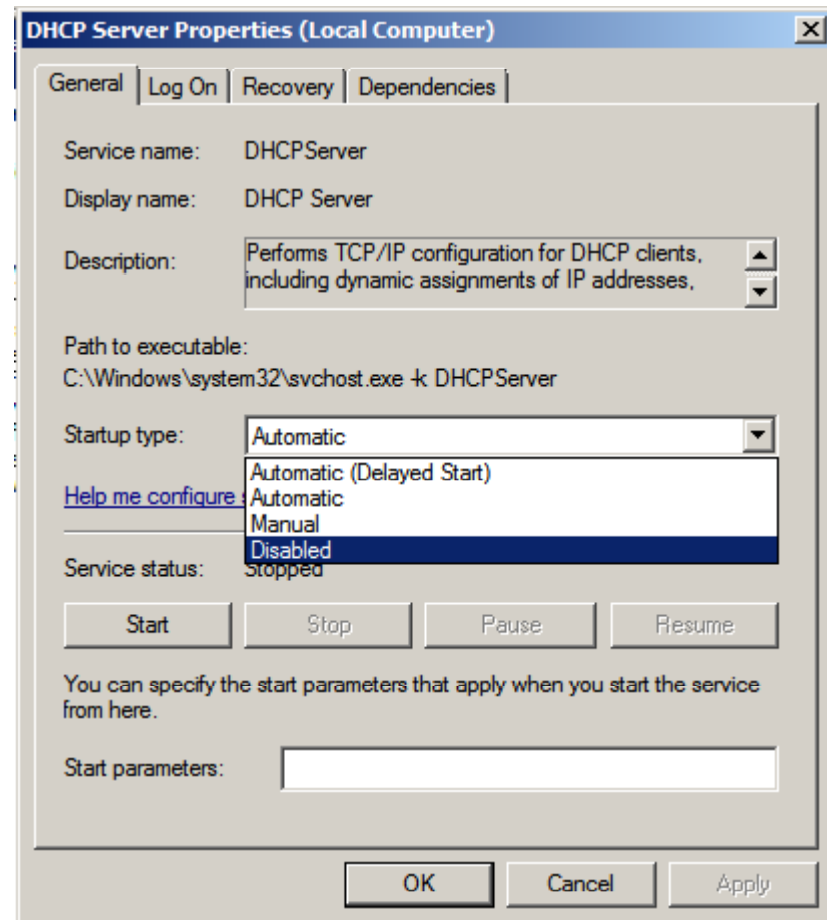
The DHCP Properties window will appear and we can see the service status is started. We will first stop the service and the DHCP server can no longer perform TCP/IP configuration for client computers.



Disabling DHCP Service

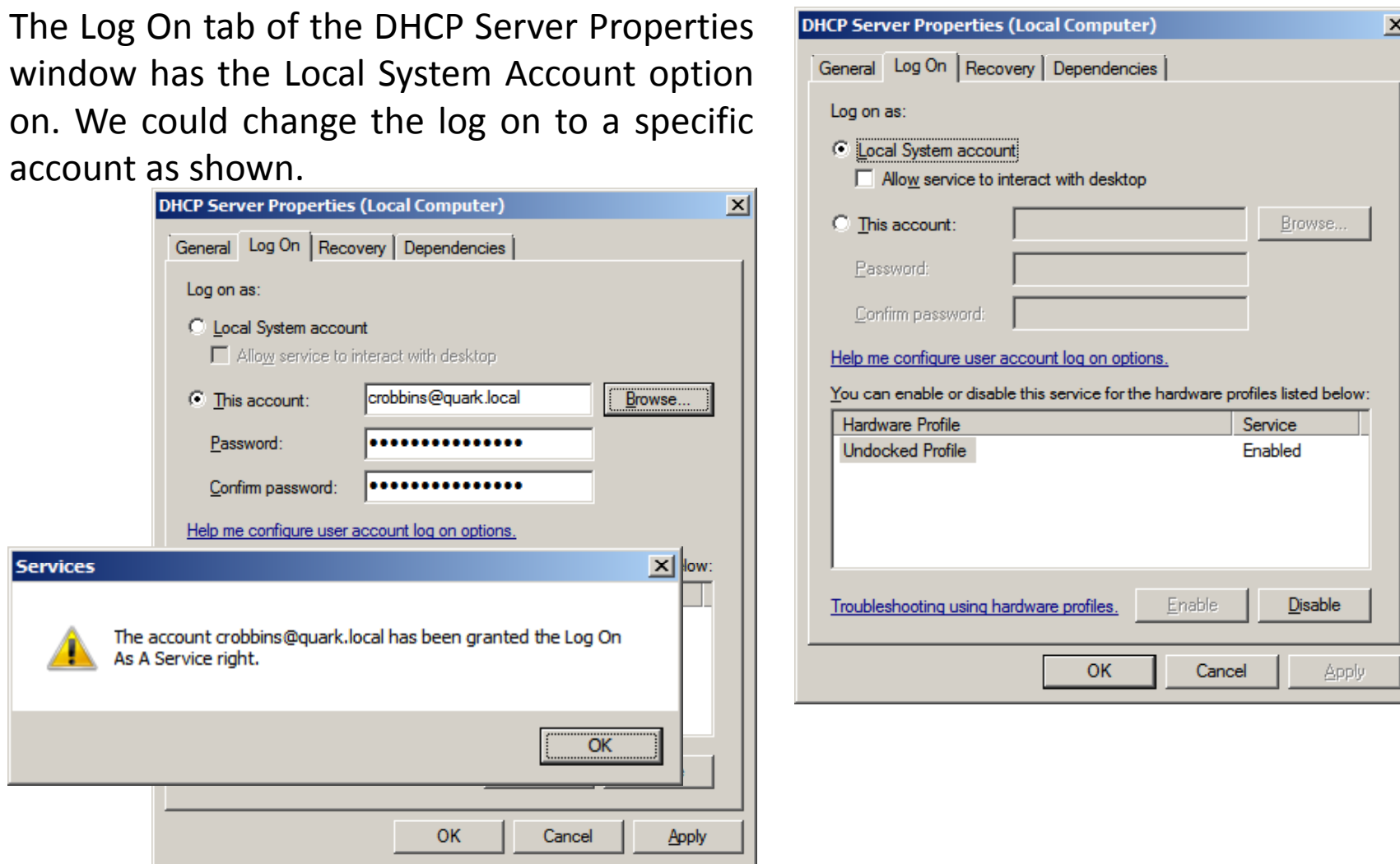
We can also disable the DHCP server. The server role is still loaded on the Windows 2008 server, but is disabled.

To put the DHCP server back into action, we would choose Automatic for startup type and we would press the Start button.



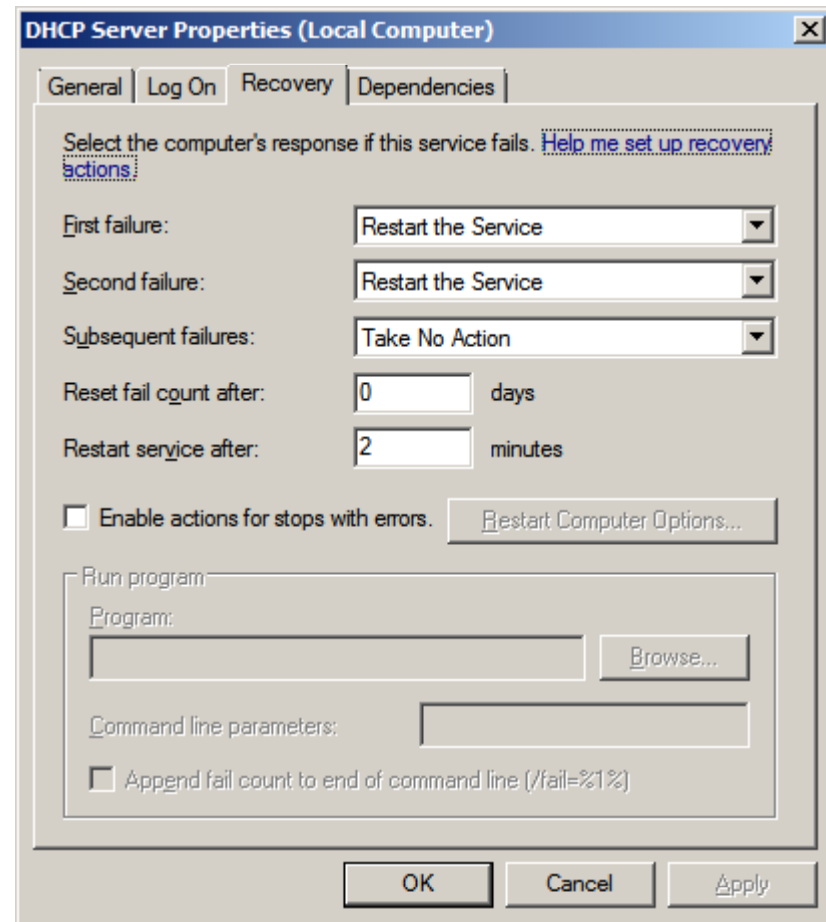
DHCP Server Properties – Log On

The Log On tab of the DHCP Server Properties window has the Local System Account option on. We could change the log on to a specific account as shown.



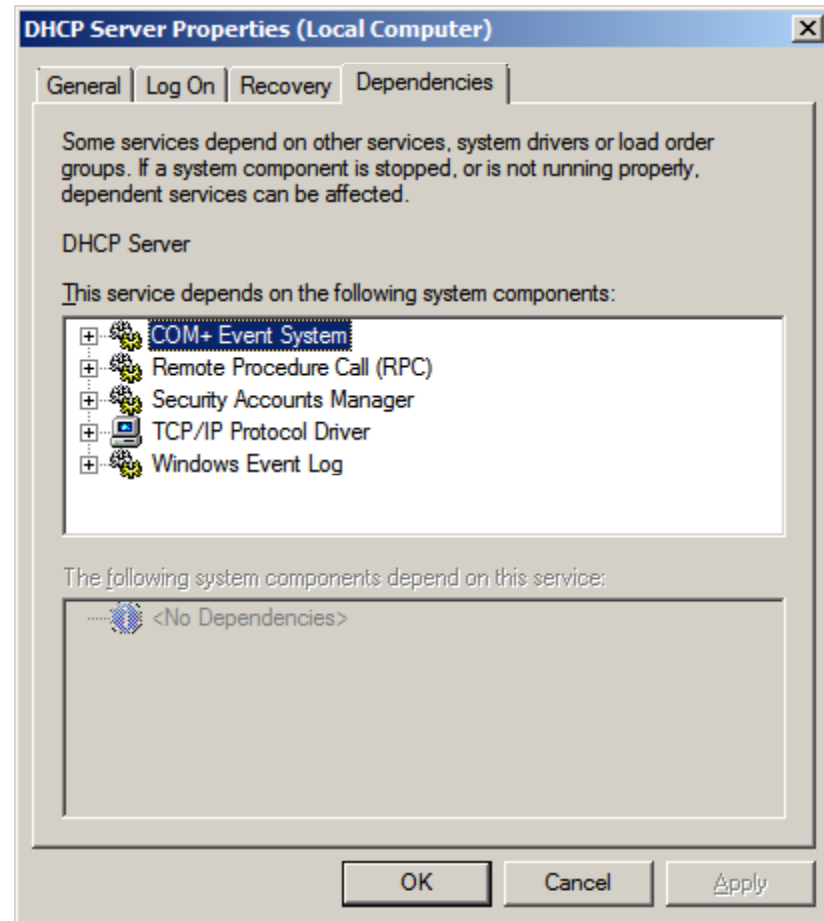
DHCP Server Properties – Recovery

The Recovery tab of the DHCP Server Properties window shows that the service will restart after first and second failure. There will be no action taken for subsequent failures. We can set the fail count after 2 days and restart service after 2 minutes.



DHCP Server Properties – Dependencies

The Dependencies tab of the DHCP Server Properties windows shows what events, security, TCP/IP driver and log can affect the service. This is very good to know for troubleshooting the system.



Services

We can see that the DHCP Server status is blank and startup type is disabled.

