

Chapter 8a

Metric Seed Files

This Chapter will cover:

- 1. Starting a New Seed File**
- 2. Modifying Text Styles**
- 3. Modifying Dimension Styles**
- 4. Changing Working Units**
- 5. Saving and Setting a Seed File**

In the last chapter, you made a standard English template or seed file. In this chapter, you will create a metric based seed file which you will be able to use when moving on to the next chapter, the bracket problem.

Start a New Project

Select the New button from the Standard Toolbox and the New window will appear. Select the browse button and choose the standard seed file that already has the layers, grid and other modified settings we still want. Save the new file as “Metric Seed” and save the file.

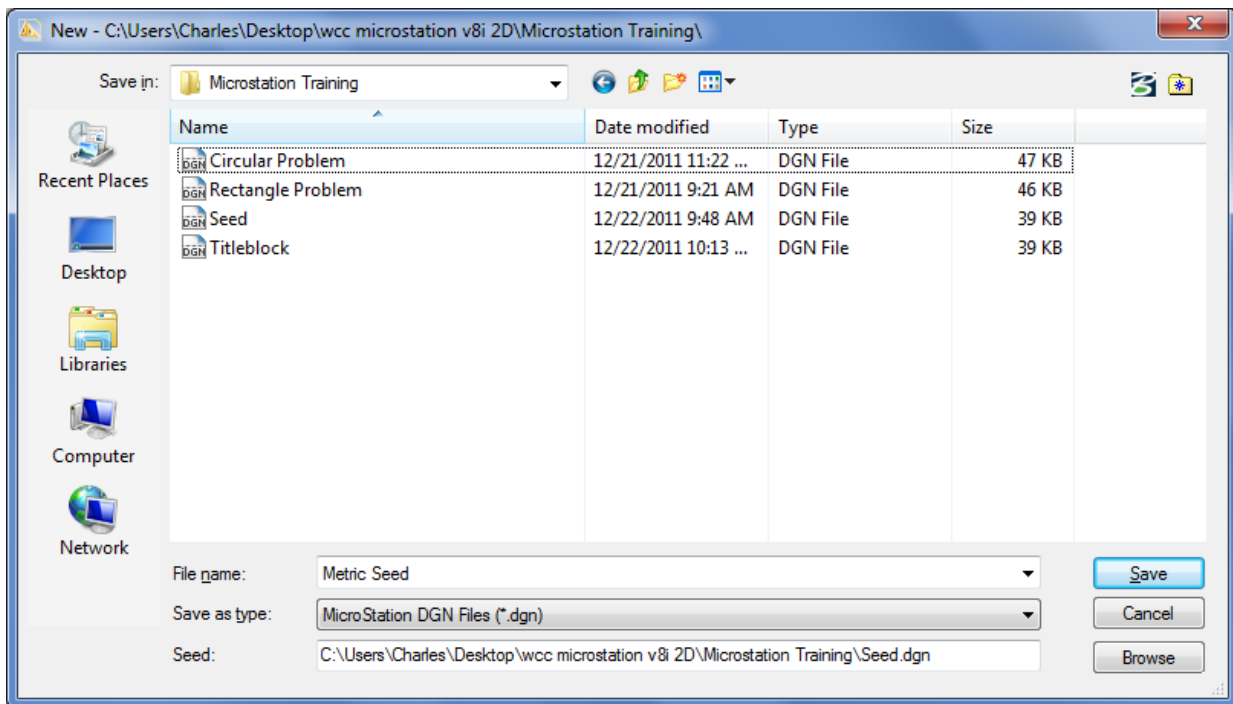


Figure 8a.1 – Starting a New File

Modifying Text Styles

You already created a text style in the Circle problem called Standard. In this seed file, you will make a Metric style. Select Element from the menu bar and then select Text Styles. The Text Style window will appear.

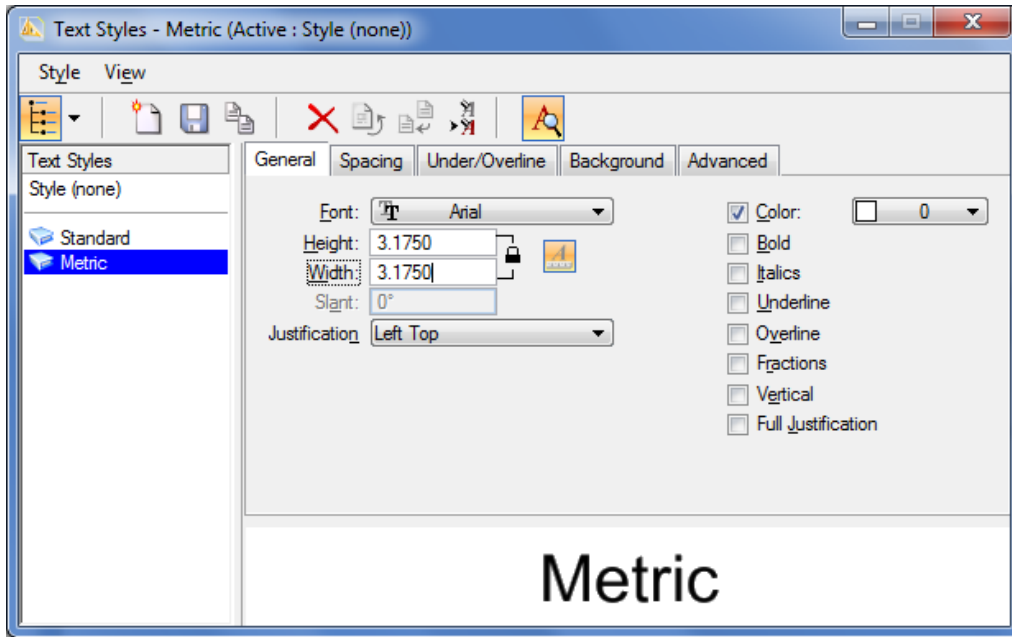


Figure 8a.6 – Text Style Window

Change the Text Height to 3.175, and the width will automatically change to match the height (Figure 8aa.6). Under Spacing, change the Line Spacing to 1. Change the color to ByLevel. Click Save to save your new text style.

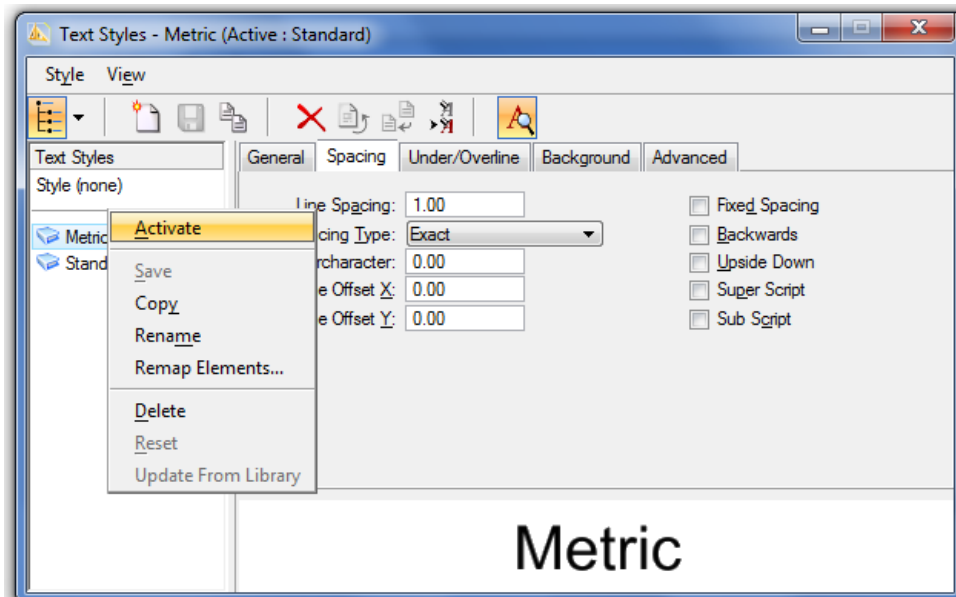


Figure 8a.7 – Setting the Active Text Style

You can right click on the Metric style and Activate it. You will use this style when placing dimensions and notes. Close the Text Styles window to continue configuring the Dimension Style.

Creating a Metric Dimension Style

Click on the magnifying glass beside the style menu access the Dimension Styles window. Click the Create Dimensions Style button, and create a new style called Metric. Under Units, change the Accuracy to 0.12 (Figure 8a.8). Also, check the Leading Zeros and Trailing Zeros boxes in the Primary Units area.

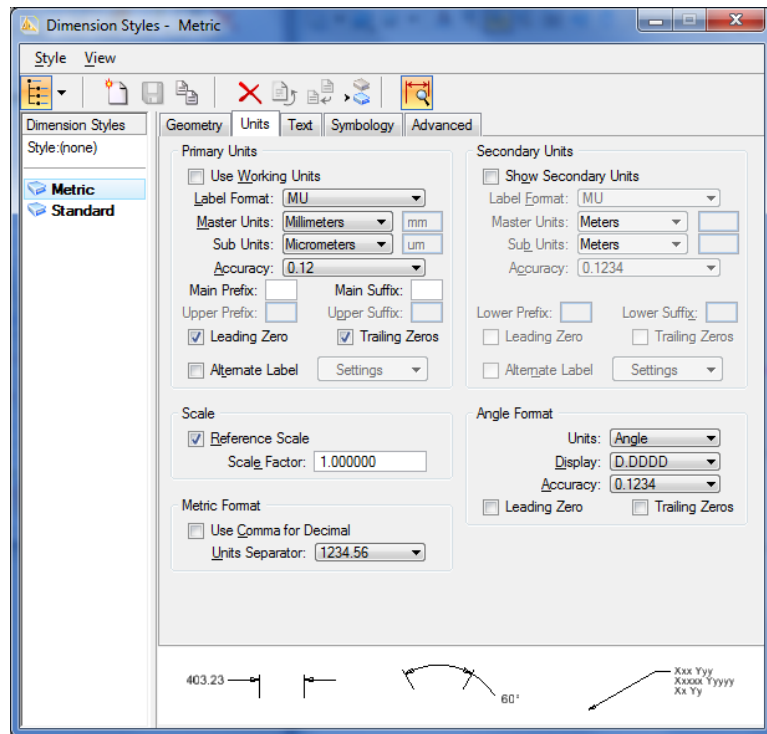


Figure 8a.7 – Setting the Active Text Style

Under Text, select the Text Style drop menu and select the Metric text style you just created (Figure 8a.9). In the Format area, change the Orientation to Horizontal. Click the save style button at the top of the window when you are finished. Now you are ready to place the radius dimensions

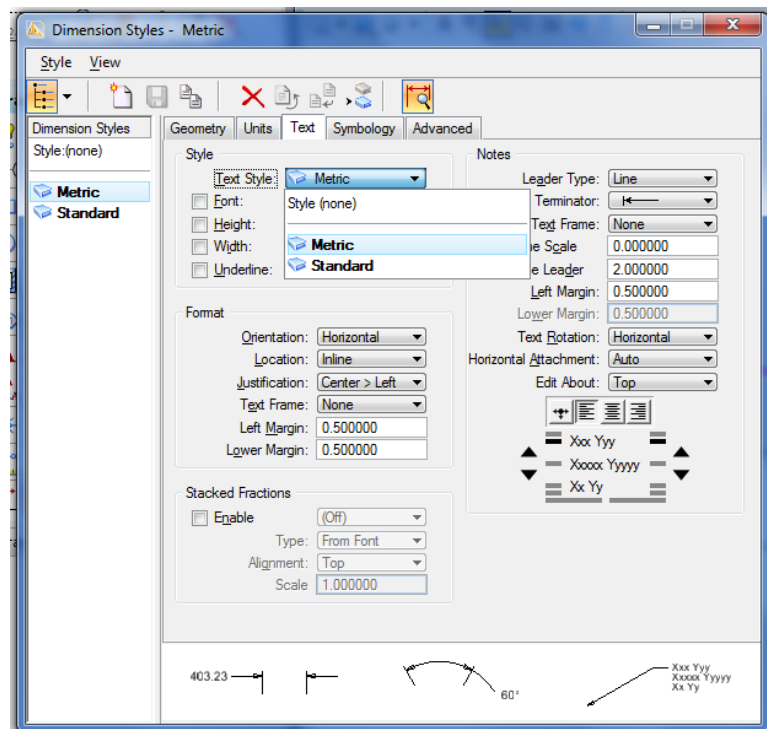
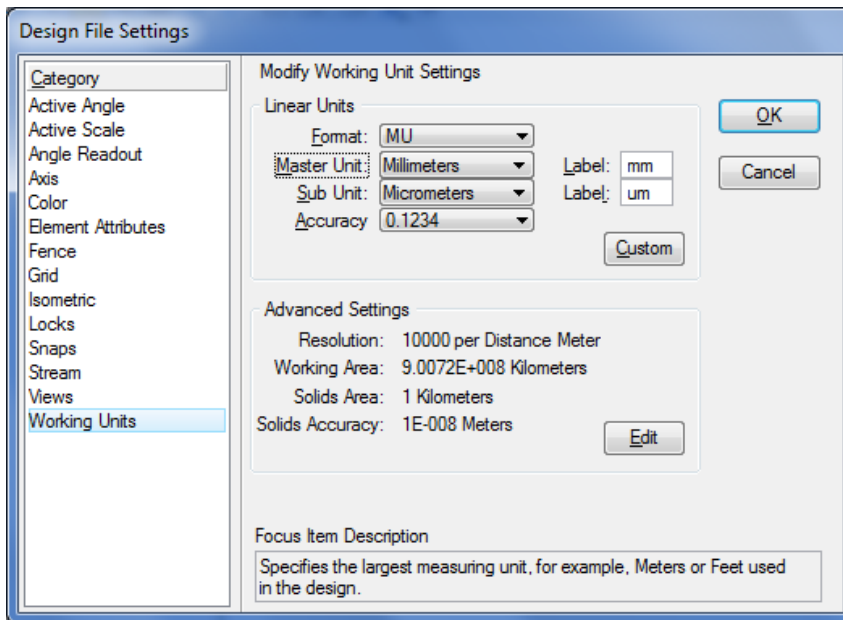


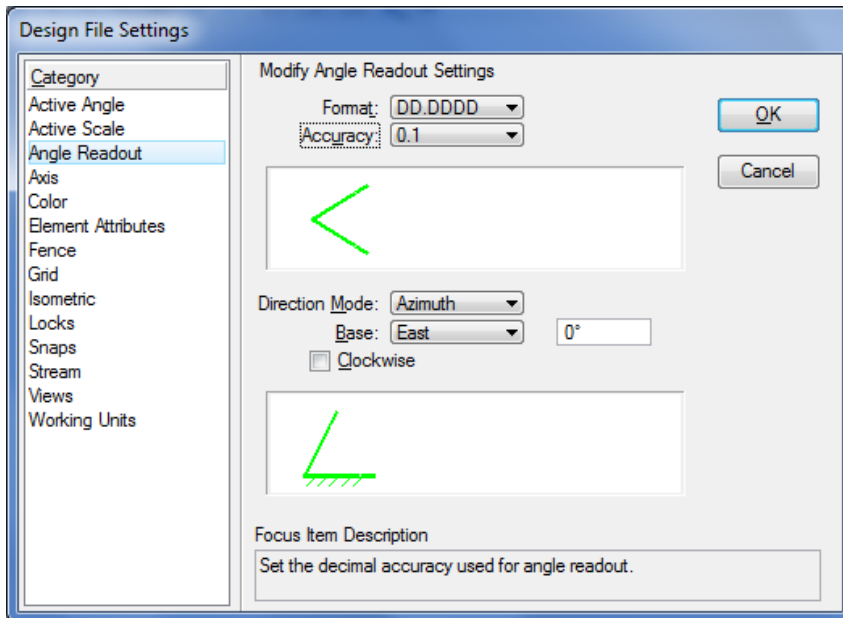
Figure 8a.9 – Setting the Active Text Style

Modifying the Drawing Units



The seed file you are creating will be based on Metric units rather than standard English. To change the project's working units, select Setting from the menu bar and then select Design File and the DGN File Settings window will appear. Select Working Units from the column on the left. Change Format to MU for Master Unit only, and change the Master Unit to millimeters. Change the Angle Accuracy to 0.1234. Press OK to save these settings.

Figure 8a.10 – Setting the Working Units



Select Angle Readout from the column on the left. The Angle Accuracy should still be set to 0.1. Press OK to save these settings.

Figure 8a.11 – Setting the Working Units

Saving and Setting the Seed File

To save the seed file, just click save.

An easy way to set the seed file is use the Browse button to locate the template you want to use and set the Metric template file for the new drawing.

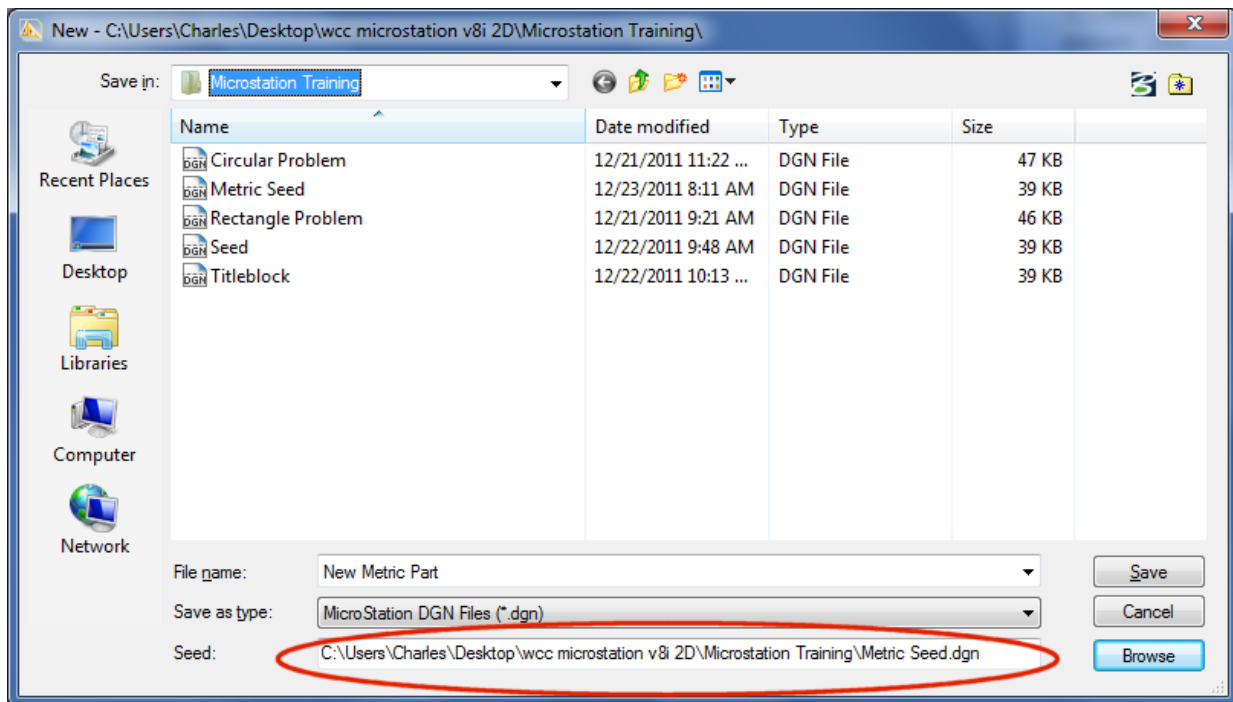


Figure 8a.12 – Setting the Seed File

*** World Class CAD Challenge 02-17 * - This task is not timed but we do challenge you to test your seed file on some sample drawings to discover whether you would be required to modify any system variables or create a level that is forgotten. Continue to test your templates, each time you can write down your omission and open the seed file, make the change to maintain your World Class status.**