

Chapter

7

Placing Notes on the Circular Problem

This chapter will cover:

- 1. Using the Using the Window Area Tool to Change the View**
- 2. Changing layers to place text on the drawing**
- 3. Use the Place Text command to add text to the drawing**
- 4. Use special symbols when adding text to the drawing**
- 5. Checking the spelling of the notes using the Spell Checker**
- 6. Saving the drawing**

Using the Window Area Tool to Change the View

Use the Window Area tool on the 2D View Control toolbar to zoom in to the area in the bottom right corner of the part. This is where you will place the notes on this drawing.



Select a point inside the part and drag the window out and down to the right (Figure 7.1). Click to zoom into this area.

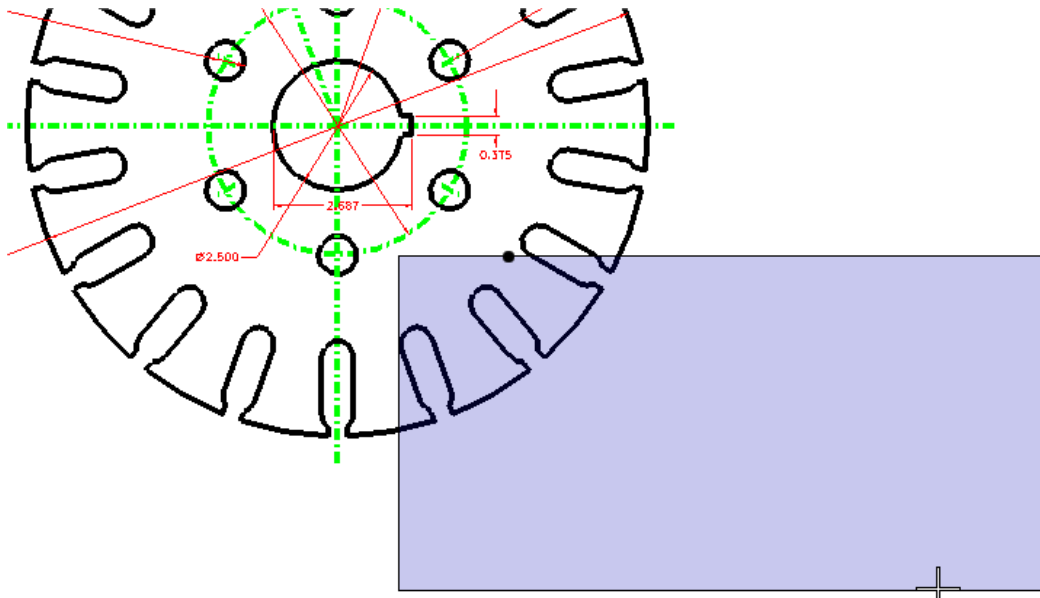


Figure 7.1 – Selecting the Area to Zoom

Changing Levels

Use the Active Level combo box to select the text level before placing the notes.

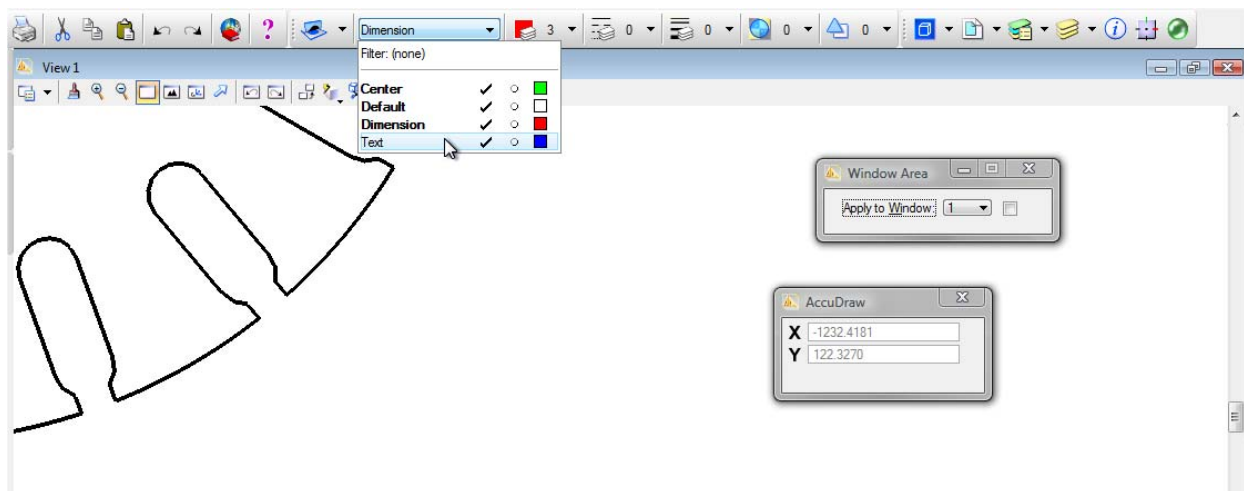


Figure 7.2 – Selecting the Text Level

Using the Place Text Tool to Place Text

Now you are ready to place notes on the drawing. Select the Place Text tool from the Text toolbar. The Place Text window and the Text Editor – Word Processor window will appear.



Make sure that the text style is set to the Standard style you created in the rectangle problem and modified for this problem. The Active Angle should be at 0.0000° and the Method should be set to By Origin (Figure 7.3).

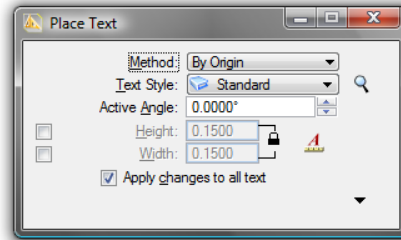


Figure 7.3 – The Place Text Window

Type the notes into the Text Editor – Word Processor window. The notes you need to type are:

NOTES:

1. MATERIAL: 18 GA. (0.046) C.R.S.
2. REMOVE ALL SHARP EDGES AND BURRS.
3. CADMIUM PLATE
4. TOLERANCES UNLESS OTHERWISE SPECIFIED:
3 DECIMAL: ± 0.010
ANGULAR: $\pm 0.1^\circ$

To add the plus/minus symbol and the degree symbol, select the Insert Symbol tool from the Text Editor – Word Processor toolbar. The Symbols in INTL_ENGINEERING window will appear. Just scroll through the index of characters available until you find the one you need. Double-click the symbol to insert it into the text. Use TAB to create the space between the numbers and the text. Once you have typed the text into the Text Editor – Word Processor window, select a point to place the notes (Figure 7.4).



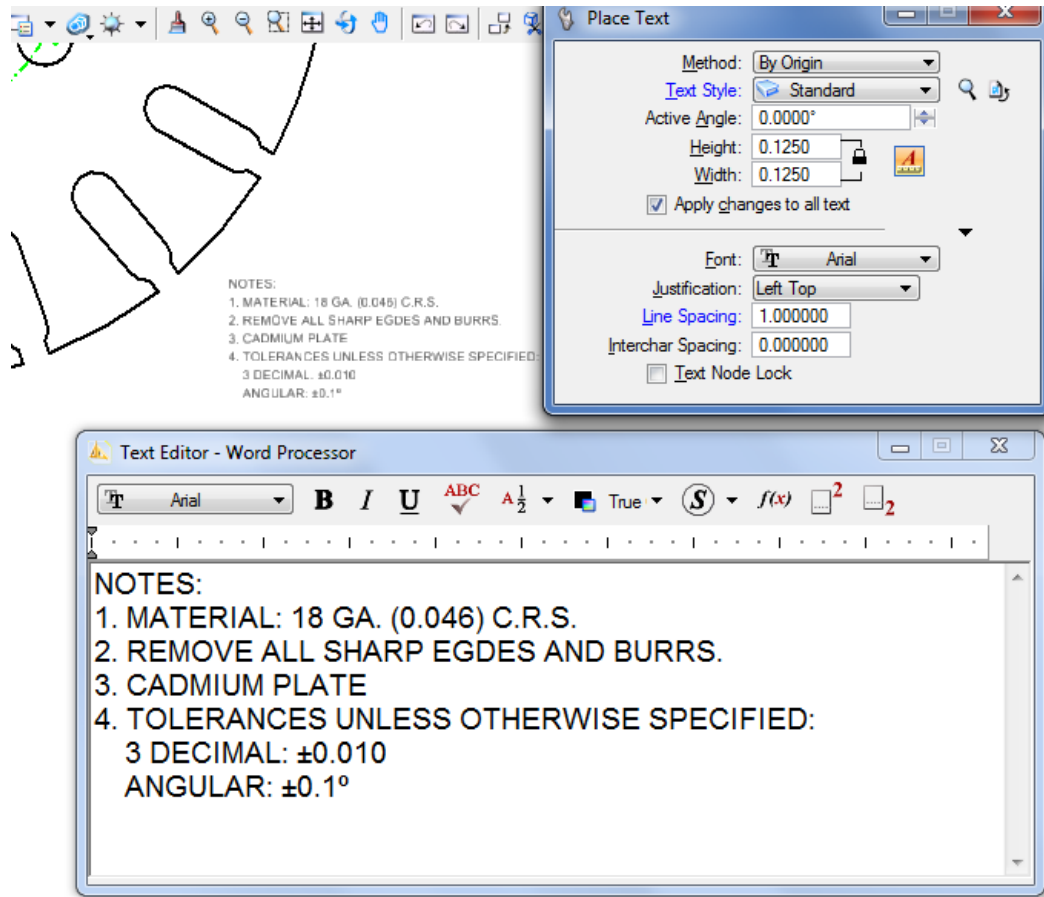


Figure 7.4 – Placing the Notes

Checking the Spelling of the Notes Using the Spell Checker

In the notes picture in Figure 7.4 the word EDGES is spelled incorrectly. Select the Spell Checker tool from the Text toolbar to correct this problem.



Select the notes and the body of text will become highlighted. Click again and the Spell Checker window will appear with the misspelled word highlighted and suggested replacement words (Figure 7.5). If you misspelled any words in your notes besides EDGES, use the Spell Checker to correct them also.

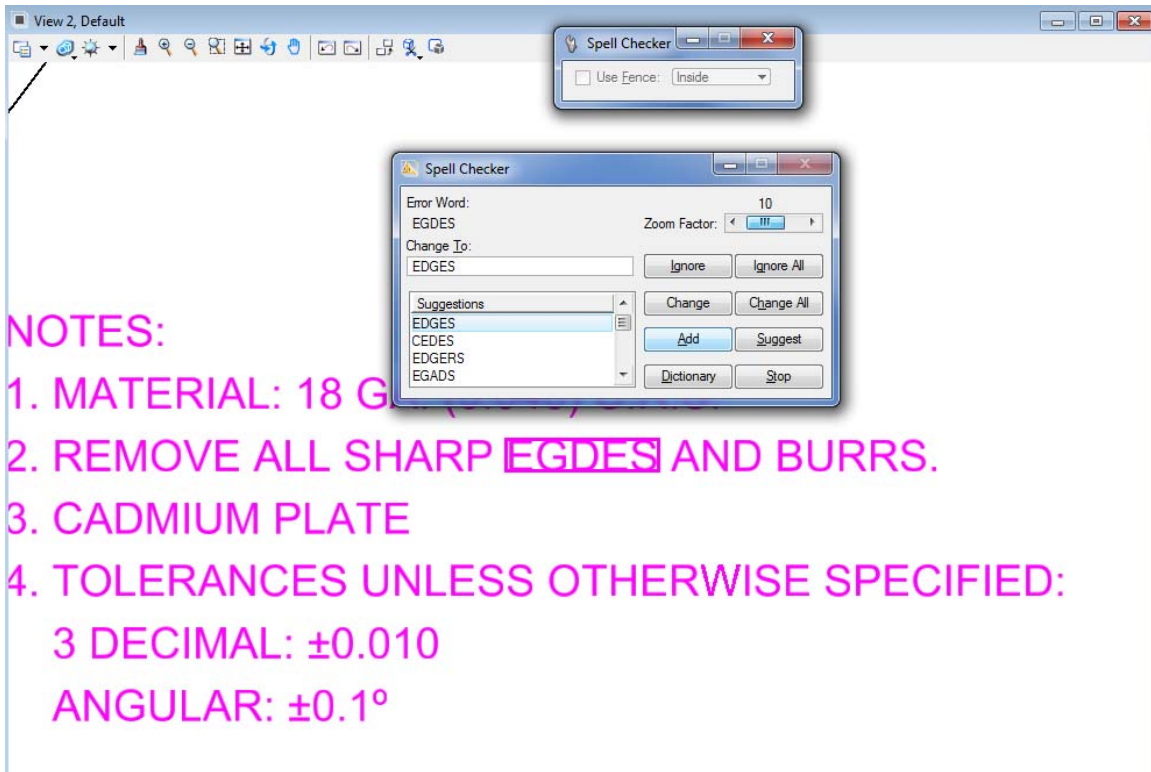


Figure 7.5 – Correcting the Misspelled Word, “Edges”

Saving

Select the Save As button from the Standard toolbar and the Save As window will appear. Type “Circular Problem” in the Files box and click OK to save (Figure 7.6).

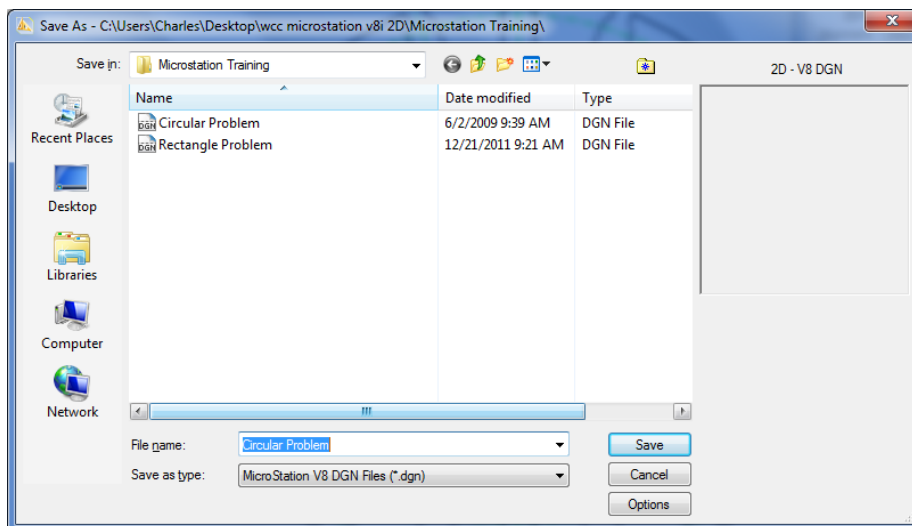


Figure 7.6 – Saving the Drawing as Circular Problem.dgn

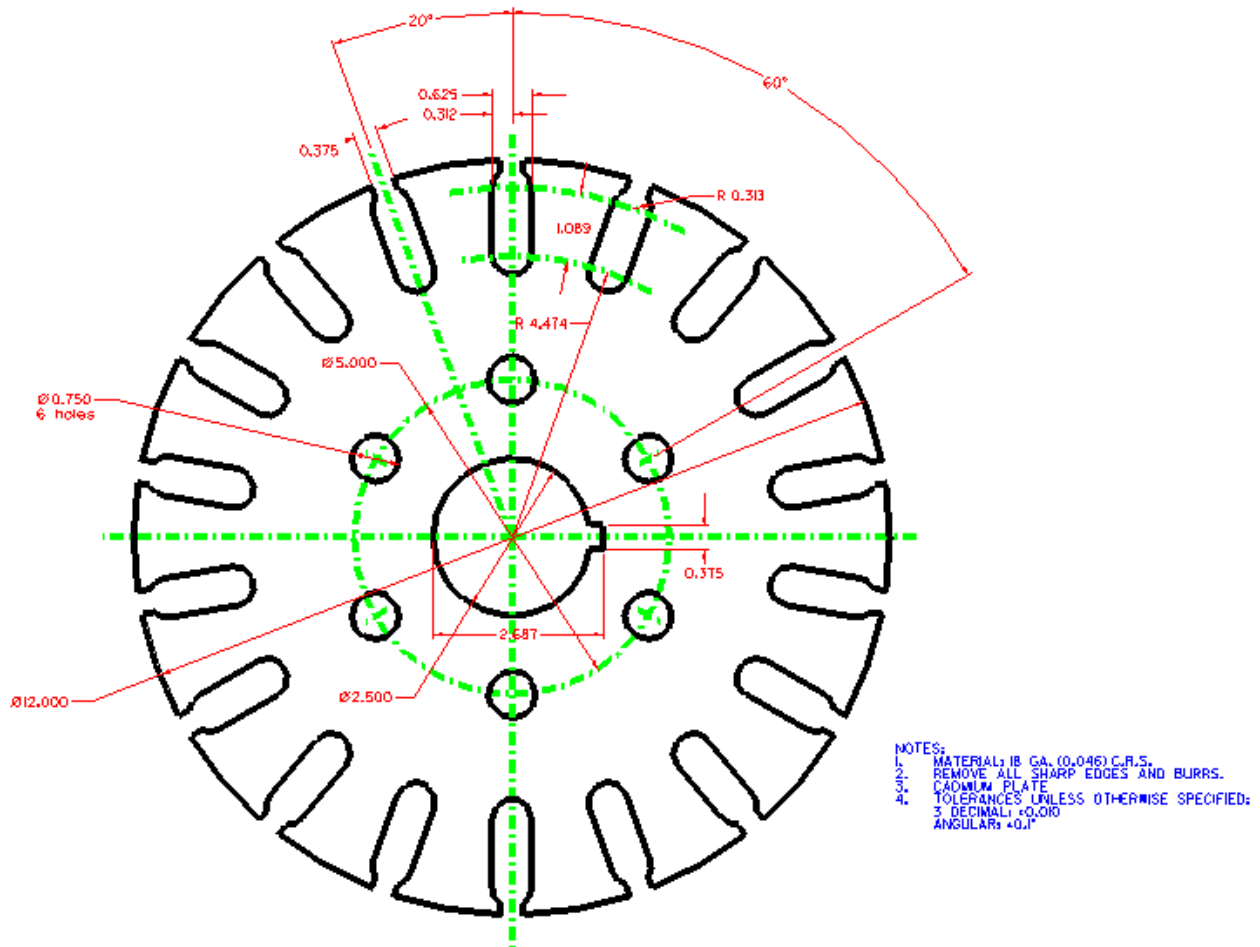


Figure 7.7 – The Finished Circular Problem

*** World Class CAD Challenge 02-16 * - Close this drawing file. Create a New file and draw the entire circular problem on proper levels, using proper dimensions and finally placing the notes on the drawing. Continue this drill four times, each time completing the drawing under 15 minutes to maintain your World Class ranking. The world record for the complete drawing is under 5 minutes. See if you can match that effort, but if you are under 15 minutes, you may proceed to the next chapter.**

Send your best time and a copy of your drawing for verification to the authors of these problems to have your name, location and time posted. See the web site for instructions.

www.worldclasscad.com