

Dreamweaver Behaviors

April 5, 2010

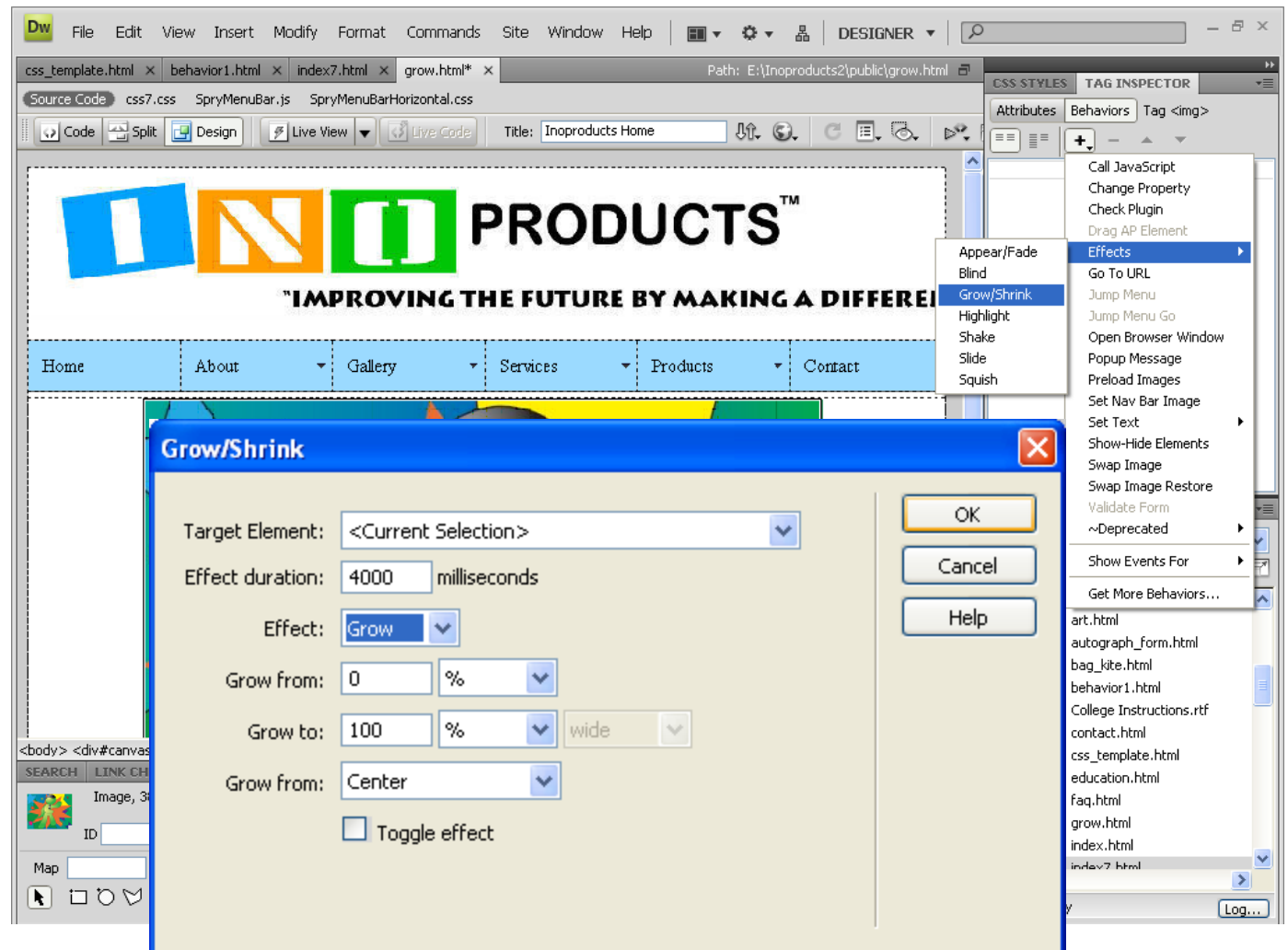
Growing Images

We insert an image into the template.

Then we select the image. We open the Behavior window and select Effects. We pick Grow / Shrink.

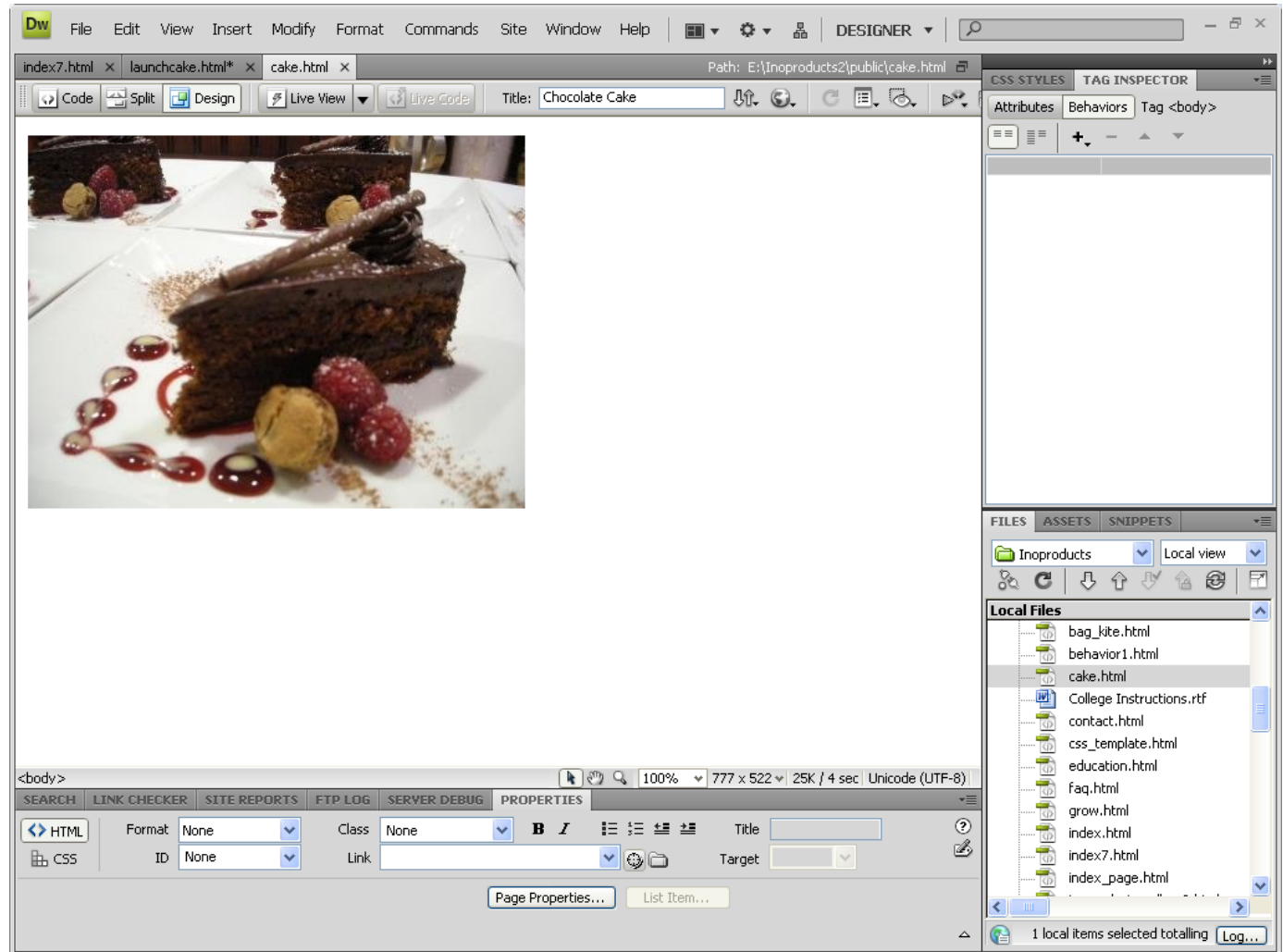
We alter the duration to grow.

We change the on click to on load.



Adding a Popup Browsing Window

We make a webpage with an image or better yet a small ad



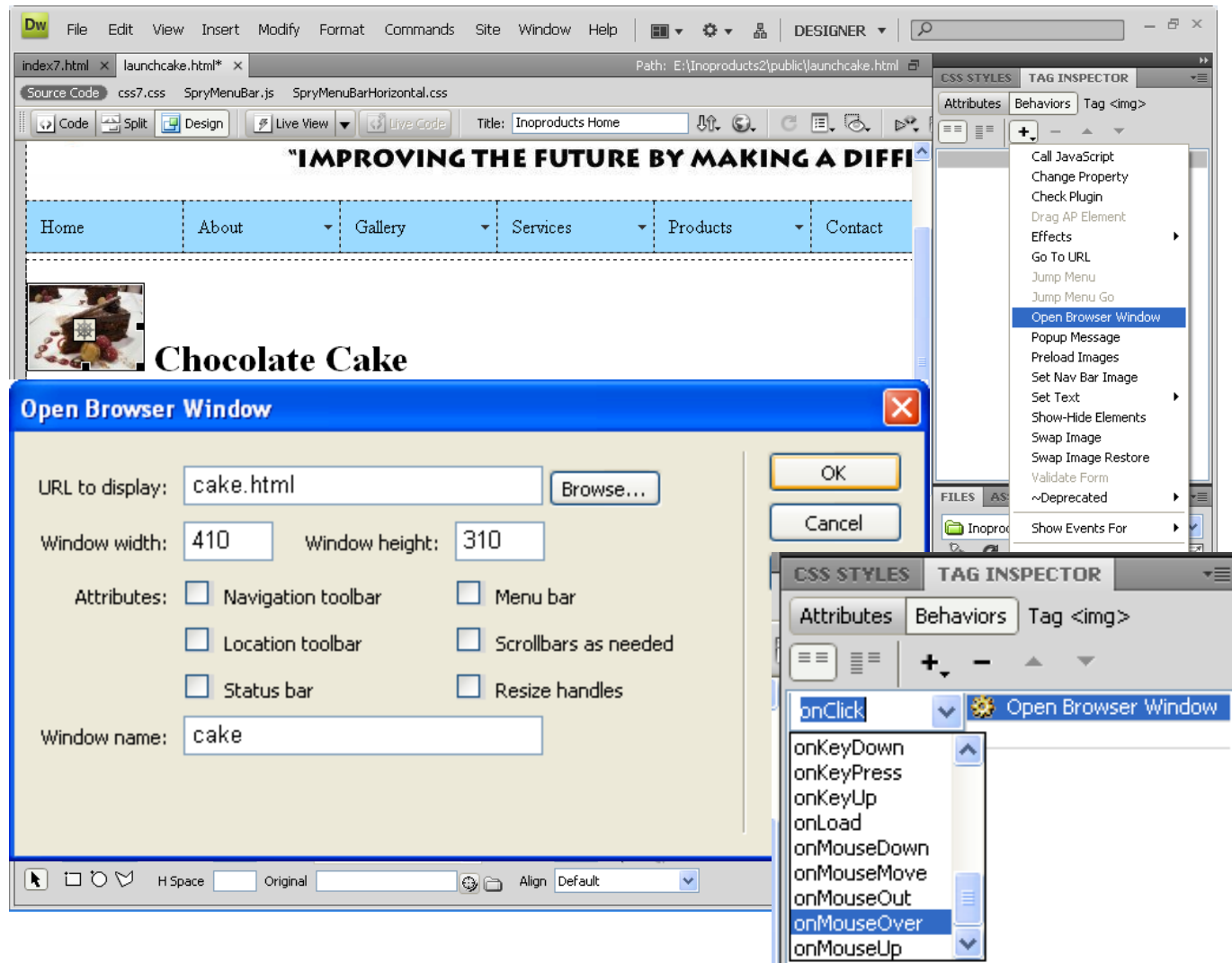
Add the Behavior

We now add the thumbnail of the cake.

We choose the cake and add a behavior with the Open Browser Window.

We fill out the Open Browser Window as shown.

We change from onClick to onMouseover



Add a Popup Message

To add a Popup Message, we select the Banner. Then from the Behavior window, pick Popup Message.

